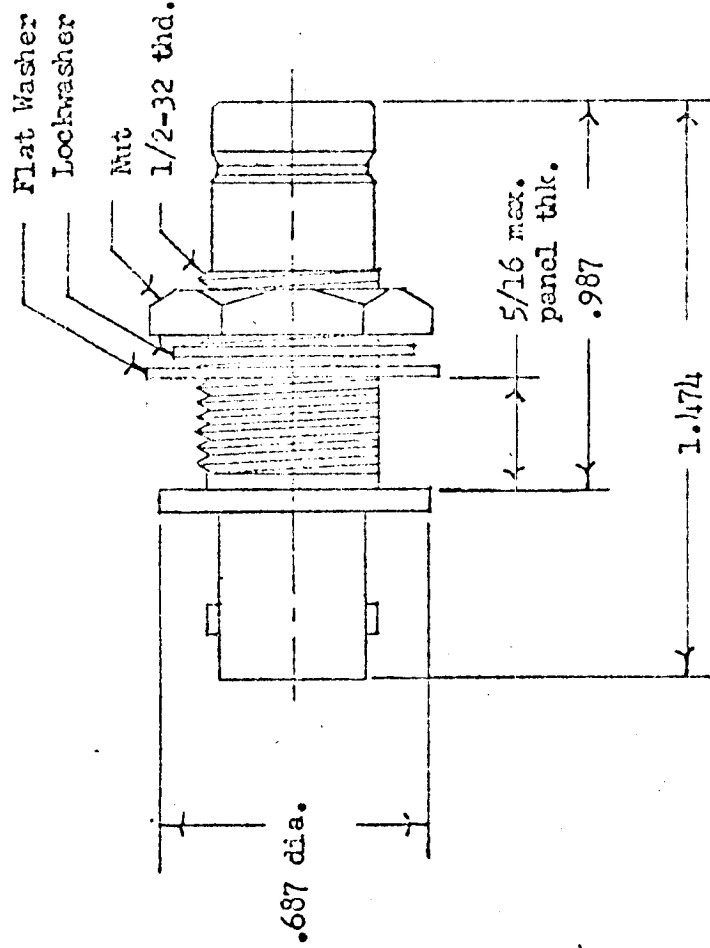


APPLICATION

REVISIONS

QTY	MODEL USED ON	ASSY NO.	LTR	DESCRIPTION	DATE	E.M.N.NO	DRAFT	CHKD	APPD
A/R	QDP		Ø	ORIGINAL RELEASE	6/10/67	Ø	J-D		J-D



Specifications
Series - BNC-70 to QDM-70

No. of contacts - one (1)
Type of contact - female
Dielectric - Teflon

Electrical Data

Max. peak volt. - 500v
Freq. limit - 10,000MHz
Nom. impedance - 70 ohms

Material
External parts - brass
Contact - beryllium copper
Lockwasher - phosphor bronze

Finish

External parts - silver plate & rhodium flash
Contact - silver plate & gold flash

NOTE. CAUTION; USE MATING SERIES TO OHM CONNECTERS.

UNLESS OTHERWISE SPECIFIED DIMENSIONS ARE IN INCHES AND INCLUDE CHEMICALLY APPLIED OR PLATED FINISHES	REQ'D ITEM	PART NUMBER	DESCRIPTION	SYMBOL
DECIMALS X ± .05 .XX ± .01 XXX ± .005 FRACTIONS 1/64 ANGLES 0°-30°			LIST OF MATERIAL	
MATERIAL SEE NOTE			THE TECHNICAL MATERIEL CORP. MAMARONECK, NEW YORK	
FINISH SEE NOTE			ADAPTER, BULKHEAD MTD.	
	FINAL APPROVAL	DATE		
	MECH. DES.	DATE		
	ELECT. DES.	DATE		
	CHECKED	DATE		
	DRAWN	DATE		
NOTICE TO PERSONS RECEIVING THIS DRAWING			SIZE	DWG NO.
THE TECHNICAL MATERIEL CORPORATION claims proprietary right in the material disclosed herein. This drawing is issued in confidence for engineering information only and may not be reproduced or used to manufacture anything shown hereon without permission from THE TECHNICAL MATERIEL CORPORATION to the user. This drawing is loaned for mutual assistance and is subject to recall at any time.			A	82679
			SCALE	SHEET
			6401-70-3961	OF
				ISSUE
				Ø