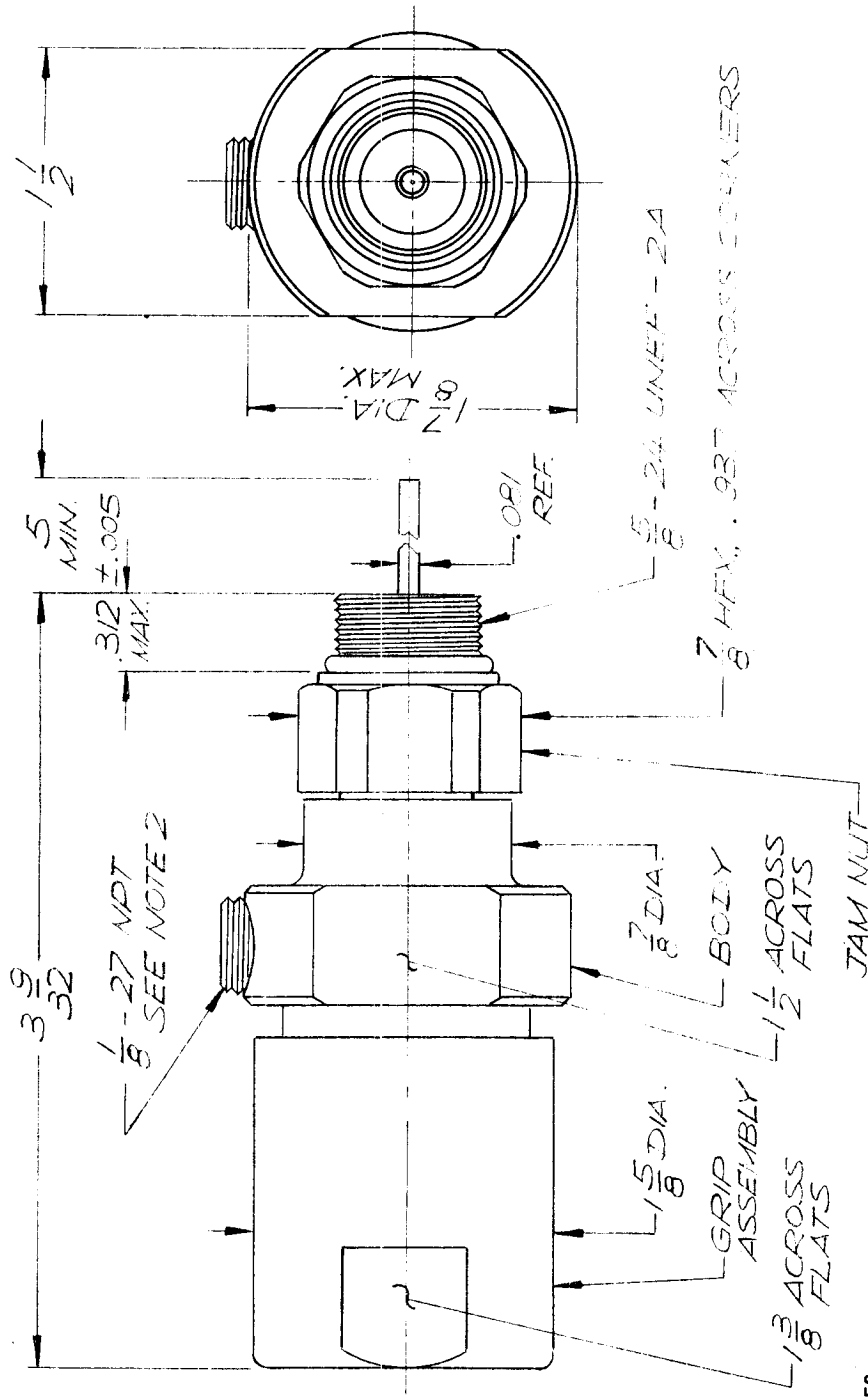


APPLICATION			REVISIONS						
QTY	MODEL USED ON	ASSY NO.	LTR	DESCRIPTION	DATE	F M N NO	DRAFT	CHKD	APPD
	AX701		X	EXPERIMENTAL RELEASE	11/5/68		C.V.		<i>[Signature]</i>
			Ø	ORIG. RELEASE FOR PROD.	12/2/68		RS		<i>[Signature]</i>



NOTES:

- CONNECTOR DESIGNED FOR USE ON 1" 75 OHN SPIRAFIL II. MANUFACTURED BY PHELPS DODGE CORP., NEW YORK, N.Y. PHELPS DODGE PART NUMBER SL 100 75H.
- WHEN PROPERLY ASSEMBLED ON CABLE, CONNECTOR IS GUARANTEED TO MAINTAIN 30 P.S.I AIR.
- WHEN PROPERLY ASSEMBLED ON CABLE, THE CENTER CONDUCTOR CAPTURE IS INDEPENDENT OF THE AMPLIFIER HOUSING OR ITS TIE DOWN SCREW.
- INSTRUCTIONS AS PER TMC SPEC S1235.

REQ'D ITEM	PART NUMBER	DESCRIPTION	SYM.
LIST OF MATERIAL			
THE TECHNICAL MATERIEL CORP. MAMARONECK, NEW YORK			
FINAL APPROVAL	DATE		
<i>[Signature]</i>	11-11-68		
MECH. DES.	DATE		
ELECT. DES.	DATE		
CHECKED	DATE		
<i>[Signature]</i>	11/5/68		
DRAWN	DATE		
<i>[Signature]</i>	11.5.68		
FINISH		CONNECTOR, END FITTING	
S401-477		SIZE	CODE IDENT. NO.
C755SLA100 E.F		A	82679
		SCALE	DWG NO.
			JJ - 344
		SHEET	OF
			Ø

NOTICE TO PERSONS RECEIVING THIS DRAWING
 THE TECHNICAL MATERIEL CORPORATION claims proprietary right in the material disclosed hereon. This drawing is issued in confidence for engineering information only and may not be reproduced or used to manufacture anything shown hereon without permission from THE TECHNICAL MATERIEL CORPORATION to the user. This drawing is loaned for mutual assistance and is subject to recall at any time.