

TMC P/N	SHELL TYPE	MFG. SHELL P/N	CONTACT ARRANGEMENT DETAIL	CONSISTS OF				
				SHELL	#16 CONTACT	#20 CONTACT	COAX CONTACT	MATES WITH
JJ-302-1	FEMALE	94-374	1	1 EA. JJ302-1-1	2 EA. PN-118-1	2 EA. PN-118-3	2 EA. PN-118-5	JJ301-1

REVISIONS						
SYM	DESCRIPTION	DATE	E.M.N. NO.	DRAFT	CHKD	APPD
0	ORIGINAL RELEASE FOR PRODUCTION	5.11.64		JB		
A	ON JJ-302-1, COAX CONT. WAS 2EA. PN-118-6	10.20.64	12688	JB	@	pc

JJ-302

SPECIFICATIONS

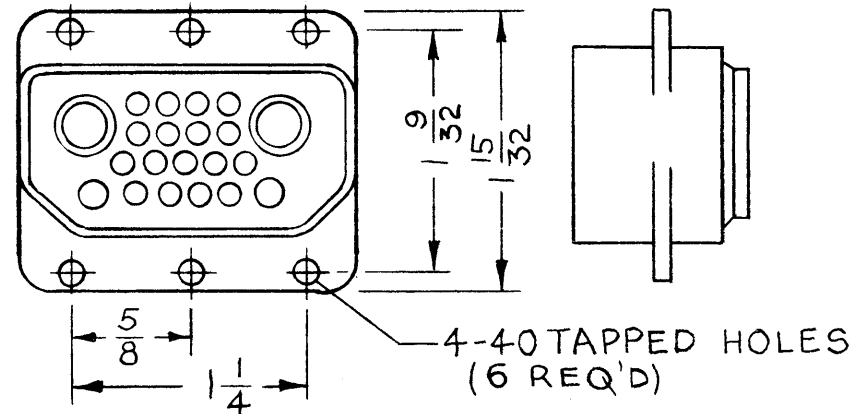
SHELL

1. MATING ENDS: ONE
2. STYLE: PUSH-IN INSERTS
3. TYPE: ENCLOSED FEMALE
4. DIELECTRIC: DIALYL PHTHALATE
5. POLARIZATION: SHELL SHAPE
6. TYPE LOCKING: NON LOCKING
7. MATERIAL: ALUMINUM
8. FINISH: CADMIUM PLATED CHROMATE TREATED
9. QUANTITY OF CONTACTS ACCEPTED: 21

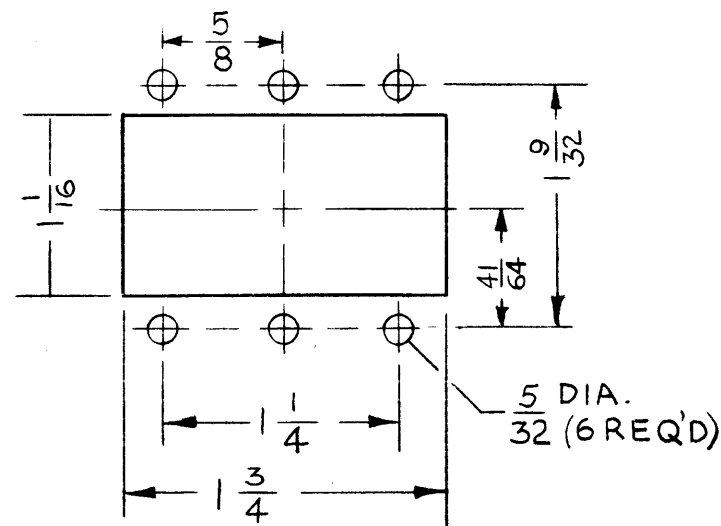
- A. 2 EA. COAXIAL FEMALE
- B. 2 EA. FOR SIZE #16 AWG WIRE MALE
- C. 17 EA. FOR SIZE #20 AWG WIRE MALE

FOR PIN INFORMATION REFER TO PN-118

A VARIETY OF CONTACT ARRANGEMENTS MAY BE USED BY INSERTING THE REQUIRED AMOUNT OF CONTACTS AS SHOWN IN "CONTACT ARRANGEMENT" DETAILS.

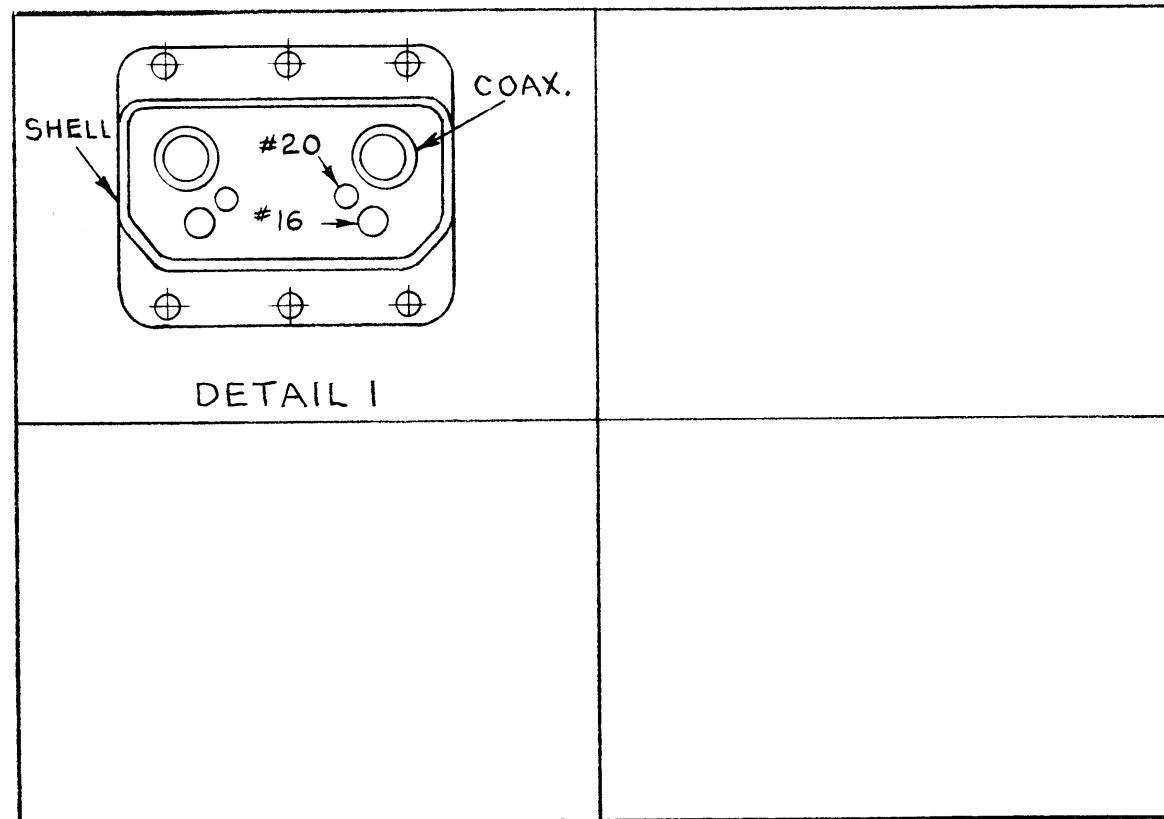


CONNECTOR SHELL, FEMALE
TMC P/N JJ-302-1-1



MOUNTING DETAIL

CONTACT ARRANGEMENT



DETAIL 1

REQ'D.	ITEM	PART NUMBER	DESCRIPTION	SYMBOL
--------	------	-------------	-------------	--------

LIST OF MATERIAL

MATERIAL SEE SPEC		THE TECHNICAL MATERIEL CORP. MAMARONECK, NEW YORK		
FINISH SEE SPEC		TITLE CONNECTOR, RECEPTACLE, ELECTRICAL (FEMALE)		
UNLESS OTHERWISE SPECIFIED DIMENSIONS ARE IN INCHES AND INCLUDE CHEMICALLY APPLIED OR PLATED FINISHES		DRAWN JB	DATE 3.6.64	FINAL APPROVAL RJC
		CHECKED @	DATE 5-11-64	
		ELECT. DES. JKL	DATE 5/11/64	JJ-302
		MECH. DES. JKL	DATE 5-11-64	A
		SHEET		REV. LTR.

4	MNF-1	
Q'TY./UNIT	MODEL USED ON	ASS'Y. NO.
SCALE	CODE	S401-71

THE CONTENTS OF THIS DRAWING ARE THE EXCLUSIVE PROPERTY OF THE TECHNICAL MATERIEL CORP. ITS UNAUTHORIZED USE OR REPRODUCTION IN WHOLE OR IN PART IS STRICTLY FORBIDDEN.

NOTES