

| TMC P/N | SHELL TYPE | MFG SHELL P/N | CONTACT ARRANGEMENT- MENT DETAIL | CONSISTS OF | | | | |
|---------|------------|---------------|--|--------------------|-------------------|-------------------|-------------------|------------|
| | | | | SHELL | #16 CONTACTS | #20 CONTACTS | COAX CONTACTS | MATES WITH |
| JJ301-1 | MALE | 94-375 | 1 | 1 EA. JJ301-1-1 | 2 EA. PN-118-2 | 2 EA. PN-118-4 | 2 EA. PN-118-6 | JJ302-1 |

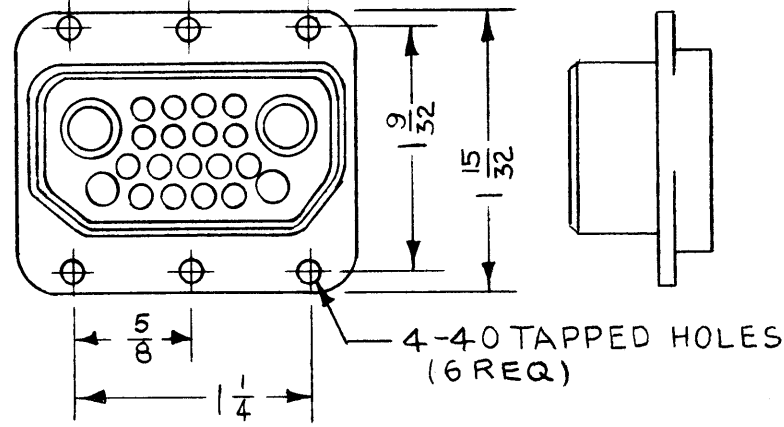
JJ-301

| REVISIONS | | | | | |
|-----------|--|----------|------------|-------|-----------|
| SYM | DESCRIPTION | DATE | E.M.N. NO. | DRAFT | CHKD APPD |
| 0 | ORIGINAL RELEASE FOR PRODUCTION | 5.11.64 | | WB | |
| A | ON JJ301-1 COAX CONT. WAS 2EA PN-118-5 | 10.20.64 | 12689 | WB | @ y |

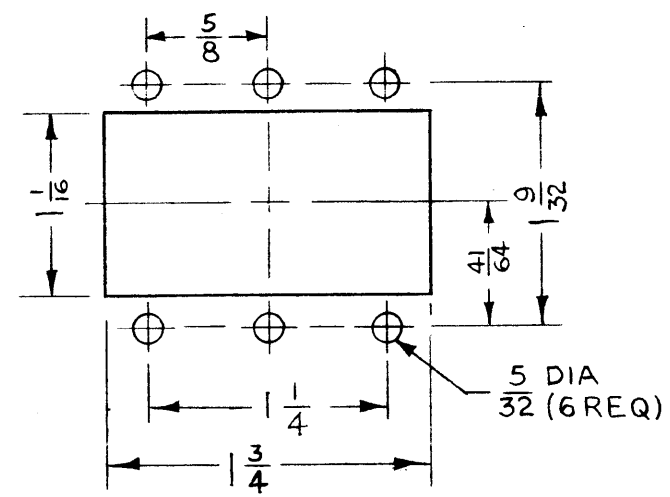
SPECIFICATIONS

SHELL

1. Mating Ends: One
2. Style: Push-In Inserts
3. Type: Enclosed Male
4. Dielectric: Diallyl Phthalate
5. Polarization: Shell Shape
6. Type Locking: Non-Locking
7. Material: Aluminum
8. Finish: Cadmium Plated Chromate Treated
9. Quantity of Contacts Accepted: 21
 - A. 2 Ea. Coax, Male
 - B. 2 Ea. For Size #16 AWG Wire Female
 - C. 17Ea. For Size #20 AWG Wire Female

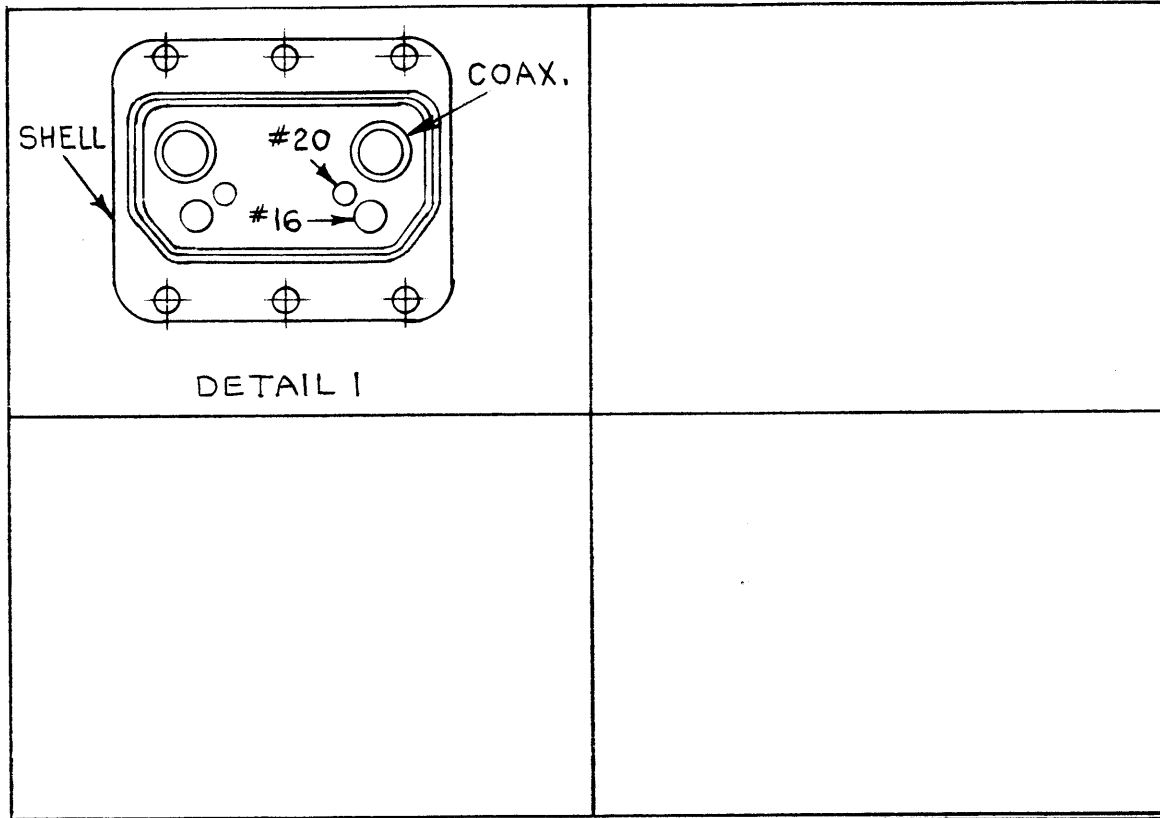


CONNECTOR SHELL, MALE
TMC P/N JJ-301-1-1



MOUNTING DETAIL

CONTACT ARRANGEMENT



FOR PIN INFORMATION REFER TO PN-118

A variety of contact arrangements may be used, by inserting the required amount of contacts as shown in "CONTACT ARRANGEMENT" details.

| REQ'D. | ITEM | PART NUMBER | DESCRIPTION | SYMBOL |
|---|------|---|-----------------|-----------------------|
| AALTONEN LIST OF MATERIAL | | | | |
| MATERIAL | | THE TECHNICAL MATERIEL CORP. MAMARONECK, NEW YORK | | |
| FINISH | | TITLE CONNECTOR, RECEPTACLE, ELECTRICAL, (MALE) | | |
| UNLESS OTHERWISE SPECIFIED DIMENSIONS ARE IN INCHES AND INCLUDE CHEMICALLY APPLIED OR PLATED FINISHES | | DRAWN WB | DATE 3.6.64 | FINAL APPROVAL RSC |
| | | CHECKED @ | DATE 5-11-64 | |
| | | ELECT. DES. JKG | DATE 5/11/64 | JJ-301 |
| | | MECH. DES. RSC | DATE 5-11-64 | A |
| | | | SHEET | REV. LTR. |

| | | |
|------------|---------------|------------|
| 4 | MNF-1 | |
| Q'TY./UNIT | MODEL USED ON | ASS'Y. NO. |
| SCALE | CODE | S401-71 |

NOTES

THE CONTENTS OF THIS DRAWING ARE THE EXCLUSIVE PROPERTY OF THE TECHNICAL MATERIEL CORP. ITS UNAUTHORIZED USE OR REPRODUCTION IN WHOLE OR IN PART IS STRICTLY FORBIDDEN.

| | |
|-------------|-----------|
| DECIMALS | FRACTIONS |
| .X ± .05 | ± 1/64 |
| .XX ± .01 | ANGLES |
| .XXX ± .005 | ± 0° 30' |