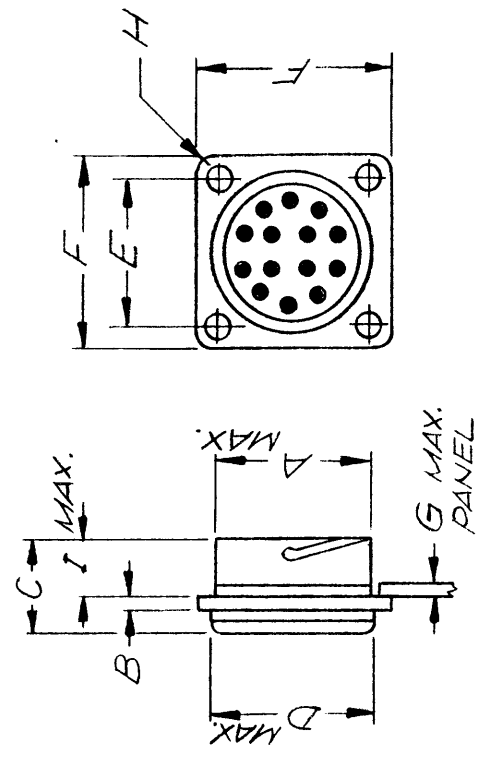


TMC P/N	MFG P/N	CONTACTS		A	B	C	D	E	F	G	H	I	MATCHING CONNECTORS		LTR	DESCRIPTION	DATE	E.M.N. NO	DRAFT	CHKD	APPD	
		TYPE	QTY										SIZE	TMC NO								MFG NO
JJ200-1	67-02E18-64S	SOCKET	14	16	.093	.828	1.062	1.062	1.312	.095	.125	.562	PL212-1	67-06C18-64P	G	REDRAWN & UPDATED	1/7/69	19158	CV	JK	EFM	
-2	67-02E18-64P	PIN	14	16	.093	.828	1.062	1.062	1.312	.095	.125	.562	PL212-2	67-06C18-64S								
-3	67-02E18-24S	SOCKET	24	20	.093	.828	1.062	1.062	1.312	.095	.125	.562	PL212-3	67-06C18-24P								
-4	67-02E18-24P	PIN	24	20	.093	.828	1.062	1.062	1.312	.095	.125	.562	PL212-4	67-06C18-24S								
-5	67-02E12-60P	PIN	3	16	.656	.828	.687	.812	1.031	.095	.125	.562	PL212-5	67-06E12-60S								
-6	67-02E14-5S	SOCKET	5	20	.781	.835	.812	.906	1.125	.095	.125	.562	PL212-6	67-06C14-5P								
-7	67-02E18-65P	PIN	11	7-20 4-16	.093	.828	1.062	1.062	1.312	.095	.125	.562	PL212-7	67-06C18-65S								
-8	67-02E14-5P	PIN	5	20	.781	.835	.812	.906	1.125	.095	.125	.562	PL212-8	67-06C14-5S								
-9	67-02E20-37S	SOCKET	37	20	1.156	.835	1.187	1.156	1.437	.095	.125	.562	PL212-9	67-06C20-37P								
-10	67-02E20-37P	PIN	37	20	1.156	.835	1.187	1.156	1.437	.095	.125	.562	PL212-10	67-06C20-37S								
-11	67-02E22-48S	SOCKET	48	20	1.281	.835	1.281	1.250	1.562	.095	.125	.562	PL212-11	67-06C22-48P								
-12	67-02E22-48P	PIN	48	20	1.281	.835	1.281	1.250	1.562	.095	.125	.562	PL212-12	67-06C22-48S								

NOMINAL CURRENT RATING
 N° 16 CONTACTS 17.0 AMPERES
 N° 20 CONTACTS 7.5 AMPERES
 VOLTAGE RATING 500 V. RMS



REQ'D ITEM	PART NUMBER	DESCRIPTION	SYM.
LIST OF MATERIAL			
THE TECHNICAL MATERIEL CORP. MAMARONECK, NEW YORK			
CONNECTOR, RECEPTACLE, PANEL MOUNT			
SIZE	CODE IDENT. NO.	DWG NO.	ISSUE
B	82679	JJ 200	G
SCALE			SHEET OF
			1

FINAL APPROVAL	E F M	DATE
MECH. DES. 16		
ELECT. DES.		
CHECKED	DATE	DATE
1-12-69		
DRAWN	DATE	DATE
1/10/69		

QTY / UNIT	MODEL USED ON	ASSY NO.
APPLICATION		
CODE		
<p>NOTICE TO PERSONS RECEIVING THIS DRAWING</p> <p>THE TECHNICAL MATERIEL CORPORATION claims proprietary right in the material disclosed hereon. This drawing is issued in confidence for engineering information only and may not be reproduced or used to manufacture anything shown hereon without permission from THE TECHNICAL MATERIEL CORPORATION to the user. This drawing is loaned for mutual assistance and is subject to recall at any time.</p>		

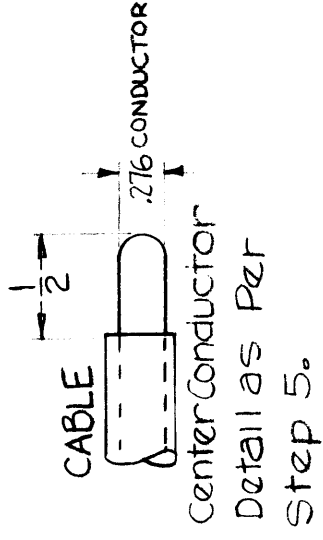
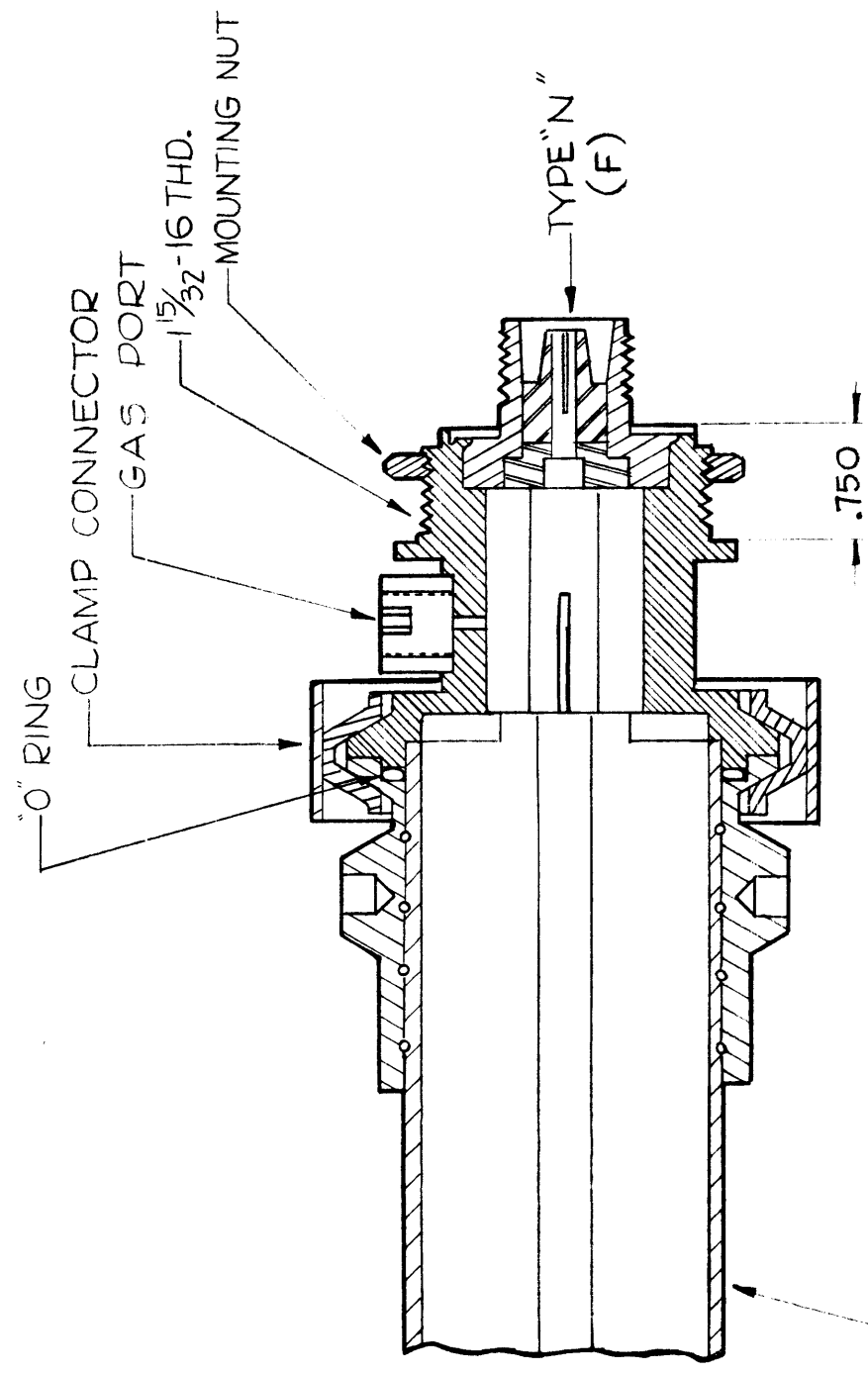
STANDARD DRAWING

INSTALLATION INSTRUCTIONS 1-1/8 Styroflex to N Connector

Refer to Accompanying Assembly Drawing

- SPECIFICATIONS**
 BODY-BRASS - SILVER PLATE; RHODIUM FLASH.
 CONTACT-BERYLLIUM - SILVER PLATE; GOLD FLASH.
 DIELECTRIC - TEFLON
 CLAMP - STAINLESS STEEL
 MTG. PROVISION - 1 1/2 HOLE

- Using a sharp tubing cutter, score cable 3" from end. Do not cut through aluminum jacket.
- Using emery cloth, clean a section of the aluminum jacket approximately 1" long centered on scored groove. The emery cloth should be used in shoeshine fashion and all scratches and marks must be removed from jacket. The "O" ring used to seal connector seats against this surface and therefore any scratches or defects may cause leaks in the finished assembly. Brush off sanding dust from jacket.
- Grip end of cable in vise and flex cable gently until the aluminum jacket fractures at the scored groove. Do not break the Styrene sleeve just under the aluminum jacket. Pull back on the cable until about 1/8" of Styrene sleeve is exposed.
- Using hot knife tool, cut Styrene sleeve and Helix down to center conductor flush with aluminum jacket. Pull off short end of jacket and Styrene.
- Cut off all but 1/2" of center conductor. Round off end; being careful to keep chips out of cable.
- Separate sleeve from connector at clamp.
- Coat inside of sleeve with GL-117 anti-sieze compound. Use compound sparingly and wipe off any excess before starting sleeve on cable.
- Push on wire coil over jacket until coil is entirely on jacket and rear end of coil is approximately 3/8" from end of jacket.
- Push sleeve over cable until wire end enters notch and is in line with thread groove. Turn sleeve clockwise, making certain that wire is engaged in thread and is not turning with sleeve. Turn on sleeve until cable extends beyond sleeve 1/32".
- Grease sleeve "O" ring with "O" ring grease, GL-118 (No. 4 compound), and install in sleeve.
- Reassemble connector with sleeve by mating center conductor and tightening clamp.



THE TECHNICAL MATERIAL CORPORATION
 40-40 30th Ave. Astoria, Oregon

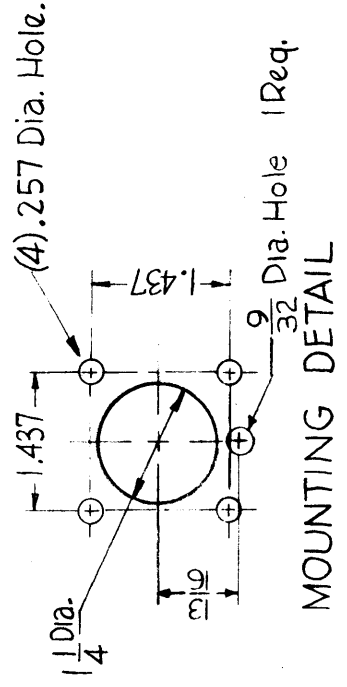
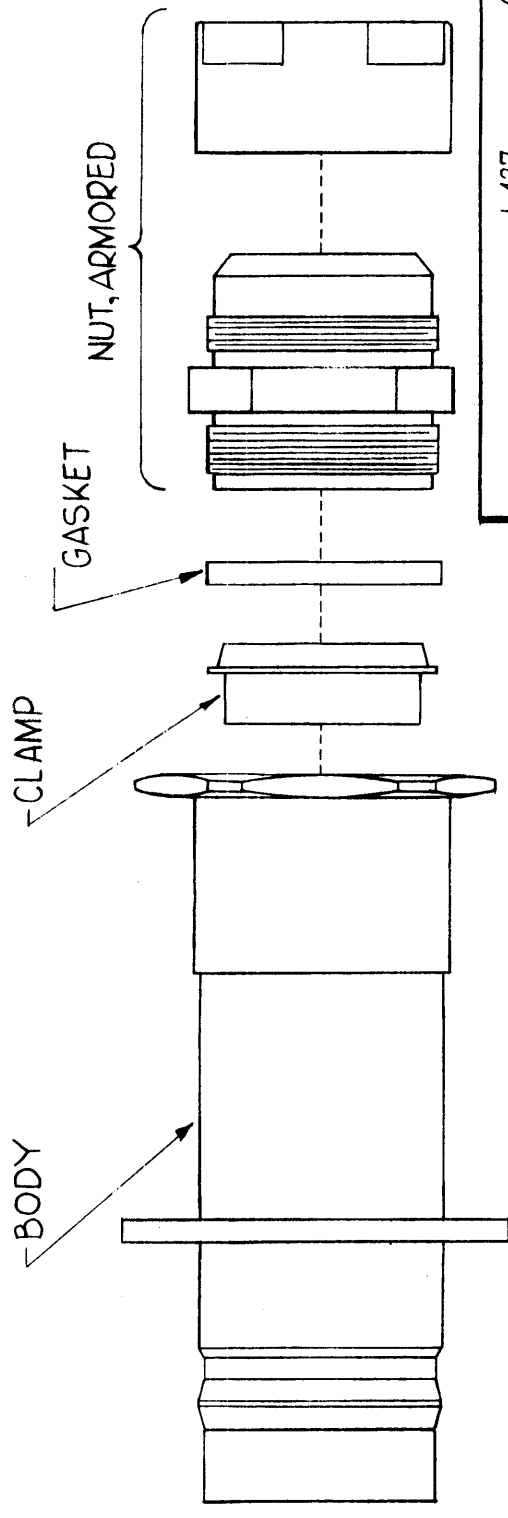
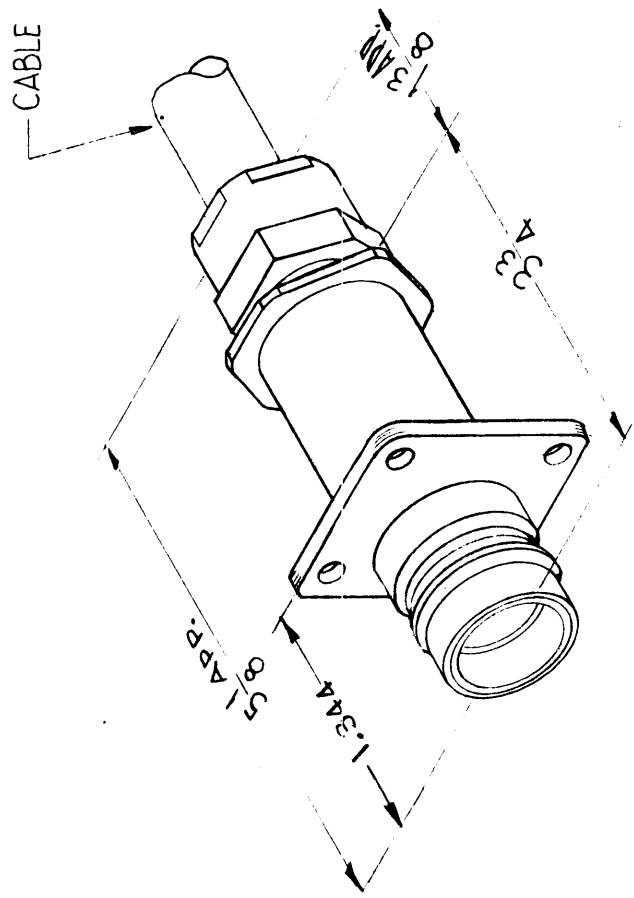
THE TECHNICAL MATERIAL CORPORATION
 40-40 30th Ave. Astoria, Oregon

REQ. ITEM	CHANGED FROM	DATE	CH. NO.	DRAFTS	CHECKER	ENG. APP.	SYMBOL
TOLERANCES DEC. DIM. ± FRAC. DIM. ± ANGULAR DIM. ±							
SCALE: S-401-70 - (2200) MAXIMUM ALLOWABLE TOLERANCES HAVE BEEN DETERMINED AND ANY DEVIATIONS WILL BE CAUSE FOR REJECTION. REMOVE ALL BURRS AND SHARP EDGES							
REQ. PER UNIT	MODEL	PROJECT NO.	ASSY. NO.	DATE			
	TCA-517/125/N			3-29-61			
USED ON							
REQ. ITEM	PART NO.	DESCRIPTION		SYMBOL			
		THE TECHNICAL MATERIAL CORP.					
		MAMARONECK, NEW YORK					
		CONNECTOR, ADAPTER					
		70 ohm 1/8" STYROFLEX TO N					
		DRAWN	CHECKED	FINAL APPROVAL			
				JJ-204			
		ELEC. DES. APP. MECH. DES. APP.					

SPECIFICATIONS

SERIES : QDL
 NO. OF CONTACT : ONE (1)
 TYPE OF CONTACT : ROUND, FEMALE
 DIELECTRIC : TEFLON
 ELECTRICAL DATA
 MAX. PEAK OPR. V. : 10 KV
 NOMINAL IMPEDANCE : 50 Ω
 CABLE ACCOMMODATIONS
 FOR CABLES { RG-17/U, RG-18/U, RG-218/U, RG-219/U
 W/PM-386, RG-35/U, RG-164/U
 MATERIAL
 EXTERNAL PARTS : BRASS
 CONTACTS : BERYLLIUM COPPER
 INSULATION : LOW LOSS PLASTIC DIELECTRIC (TEFLON)
 FINISH
 EXTERNAL PARTS : SILVER PLATED w/RHODIUM FLASH.
 CONTACT : SILVER PLATED w/GOLD FLASH.

11-208
 C



SYM	DESCRIPTION	DATE	CH. NO.	DRAFTS	CHECKER	ENG. APP.
C	MOUNTING FLANGE RELOCATED	10-8-61	730S	SS	YD	YD
B	1.344 Dim. Was 2.19/32 Dia. Hole Added	1-18-62	6232	JK	YD	YD
A	2" Dim Relocated	6-20-61	510B	YD	YD	YD

UNLESS OTHERWISE SPECIFIED:
 DIMENSIONS ARE IN INCHES
 TOLERANCES ON FRACTIONS ± 1/64 DECIMALS ± .05 ANGLES ± 1/20
 SCALE: S-401-70(2191)
 MAXIMUM ALLOWABLE TOLERANCES HAVE BEEN DETERMINED AND ANY DEVIATIONS WILL BE CAUSE FOR REJECTION.
 REMOVE ALL BURRS AND SHARP EDGES

NOTICE TO PERSONS RECEIVING THIS DRAWING
 THE TECHNICAL MATERIEL CORPORATION claims proprietary right in the material disclosed herein. This drawing is issued in confidence and its use for information only and may not be reproduced or used to manufacture any article shown herein without permission from THE TECHNICAL MATERIEL CORPORATION to the user. The user agrees to hold the Corporation harmless and is subject to recall at any time.
 Property of:
 THE TECHNICAL MATERIEL CORPORATION
 MAMARONECK, NEW YORK

REQ. ITEM	PART NO.	DESCRIPTION	SYMBOL
		THE TECHNICAL MATERIEL CORP. MAMARONECK, NEW YORK	
		CONNECTOR, RECEPTACLE(QDL SERIES)	
		DRAWN: JSG CHECKER: JSG	
		DRAWN: JSG CHECKER: JSG	
		ELEC. DES. APP. MECH. DES. APP.	
		FINISH & SPEC. NO.	
		HEAT TREAT. SPEC.	
		TYPE & TEMPER	
		FINAL APPROVAL	
		JJ-208	C

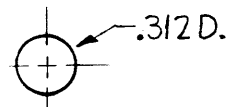
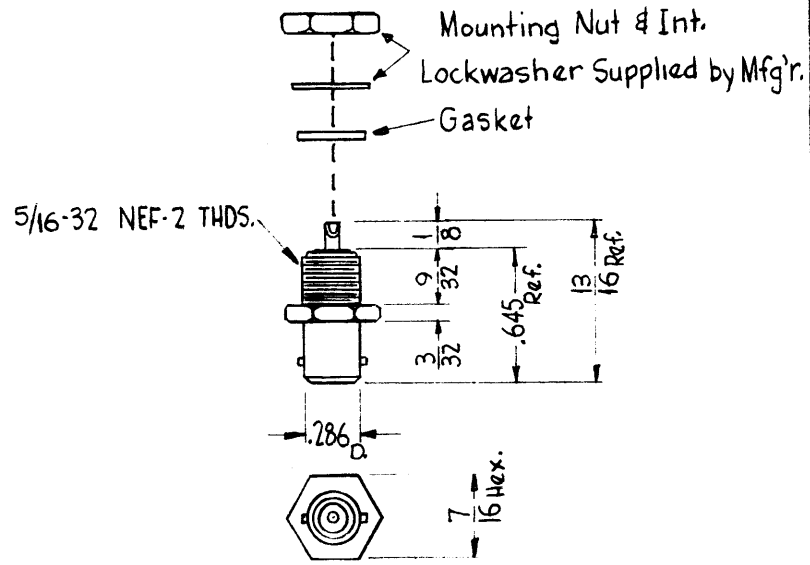
JJ-211

SPECIFICATIONS

SERIES ~ MINIATURE (BAYONET LOCKING TYPE)
 NO OF CONTACTS ~ ONE (1)
 TYPE OF CONTACT ~ MALE
 DIELECTRIC ~ TEFLON
ELECTRICAL DATA
 MAX. PEAK VOLT. ~ 1500V RMS (For One Min.)
 OPER. VOLT. ~ 500V RMS
 NOM. IMPEDANCE ~ 48Ω
 USABLE FREQ. RANGE ~ 1 TO 500 MC (For A VSWR Not exceeding 1.25)

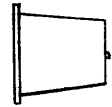
MATERIAL & FINISH

BODY ~ BRASS ; SILVER PLATE
 NUT ~ " " " "
 LOCKWASHER ~ PHOS BRONZE ; " "
 CONTACT ~ BRASS ; " "
 GASKET ~ BUNA N 40 DUROMETER (BLACK)



MOUNTING HOLE

NOTE ~ Connector Mounts on Max. Panel Thk., of 1/8"



PLASTIC DUST CAP (SUPPLIED) BY MFR.

NOTICE TO PERSONS RECEIVING THIS DRAWING

THE TECHNICAL MATERIEL CORPORATION claims proprietary right in the material disclosed hereon. This drawing is issued in confidence for engineering information only and may not be reproduced or used to manufacture anything shown hereon without permission from THE TECHNICAL MATERIEL CORPORATION to the user. This drawing is loaned for mutual assistance and is subject to recall at any time.

Property of:
 THE TECHNICAL MATERIEL CORPORATION
 MAMARONECK, NEW YORK

SYM	DESCRIPTION	DATE	CH. NO.	DRAFTS	CHECKER	ENG. APP.
	UNLESS OTHERWISE SPECIFIED: DIMENSIONS ARE IN INCHES TOLERANCES ON FRACTIONS ± 1/64 DECIMALS ± .005 ANGLES ± 1/2°					
	SCALE: 5-401-133 (6411-1)					
	MAXIMUM ALLOWABLE TOLERANCES HAVE BEEN DETERMINED AND ANY DEVIATIONS WILL BE CAUSE FOR REJECTION. REMOVE ALL BURRS AND SHARP EDGES					

3	CHG-2/IF			6-9-61
7	CHG-2/OSC			6-9-61
2	CHG-2/DIV			6-9-61
REQ. PER UNIT	MODEL	SECTION	ASS'Y. NO.	DATE
USED ON				

REQ. ITEM	PART NO.	DESCRIPTION	SYMBOL
THE TECHNICAL MATERIEL CORP. MAMARONECK, NEW YORK			
STOCK SIZE			
CONNECTOR, RECEPTACLE, MINIATURE, MALE			
MATERIAL			
		DRAWN	CHECKER
		FINAL APPROVAL	
		JJ-211	
		ELEC. DES. APP.	MECH. DES. APP.

JJ-213 B

THE CONTENTS OF THIS DRAWING ARE THE EXCLUSIVE PROPERTY OF THE TECHNICAL MATERIEL CORP. ITS UNAUTHORIZED USE OR REPRODUCTION IN WHOLE OR IN PART IS STRICTLY FORBIDDEN.

SPECIFICATIONS

SERIES ~ QDS
 NO. OF CONTACTS ~ ONE (1)
 TYPE OF CONTACT ~ FEMALE
 DIELECTRIC ~ TEFLON

ELECTRICAL DATA

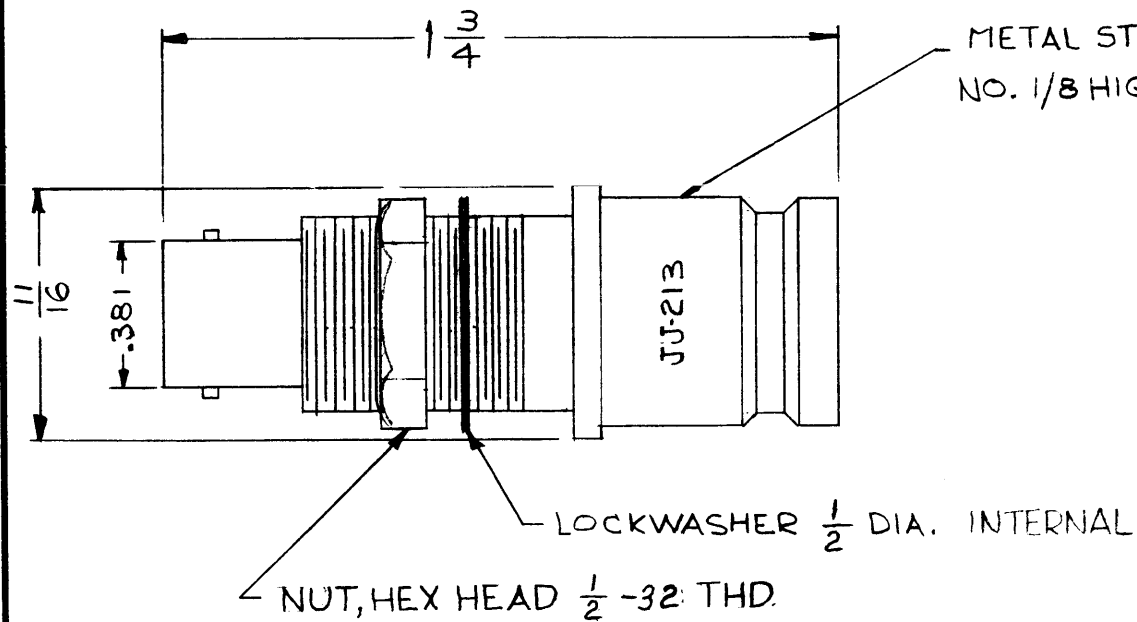
MAX. PEAK VOLTAGE ~ 500
 FREQ. LIMIT ~ 10,000
 NOMINAL IMPEDANCE ~ 50Ω

MATING ACCOMODATIONS

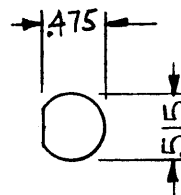
TYPE ~ BNC
 MAX. O.D. ~
 IMPEDANCE ~ 50Ω

MATERIAL

HARDWARE ~ BRASS
 EXTERNAL PARTS ~ BRASS
 CONTACT ~ BERYLLIUM
FINISH
 EXTERNAL PARTS ~ SILVER PLATE & RHODIUM FLASH,
 CONTACT ~ SILVER PLATE & GOLD FLASH.
 HARDWARE - SILVER PLATE & RHODIUM FLASH,



METAL STAMP TMC PART NO. 1/8 HIGH GOTHIC.



DRILLING PLAN

SYM	DESCRIPTION	DATE	CH. NO.	DRAFTS	CHECKER	ENG. APP.
B	LOCKWASHER WAS 3/4; NUT WAS 3/4-20	2-10-64	10832	AM.	T.R.	<i>[Signature]</i>
A	SPECS. ADDED; 11/16 DIM. WAS 11/32	5-4-62		EE		

UNLESS OTHERWISE SPECIFIED:
 DIMENSIONS ARE IN INCHES
 TOLERANCES ON FRACTIONS ± 1/64 DECIMALS ± .005 ANGLES ± 1/2°

SCALE: S-401-70(2272)

MAXIMUM ALLOWABLE TOLERANCES HAVE BEEN DETERMINED AND ANY DEVIATIONS WILL BE CAUSE FOR REJECTION.
 REMOVE ALL BURRS AND SHARP EDGES

REQ. PER UNIT	MODEL	SECTION	ASS'Y. NO.	DATE
				4-24-62

USED ON

REQ.	ITEM	PART NO.	PRITCHARD DESCRIPTION	SYMBOL
		SS	THE TECHNICAL MATERIEL CORP. MAMARONECK, NEW YORK	
		SS	ADAPTOR, CONNECTOR RECEPTACLE - QDS TO BNC	
			G. SENCEN	<i>[Signature]</i>
			TYPE & TEMPER	CHECKED
			HEAT TREAT. SPEC.	FINAL APPROVAL
			FINISH & SPEC. NO.	JJ-213 B
			ELEC. DES. APP.	MECH. DES. APP.

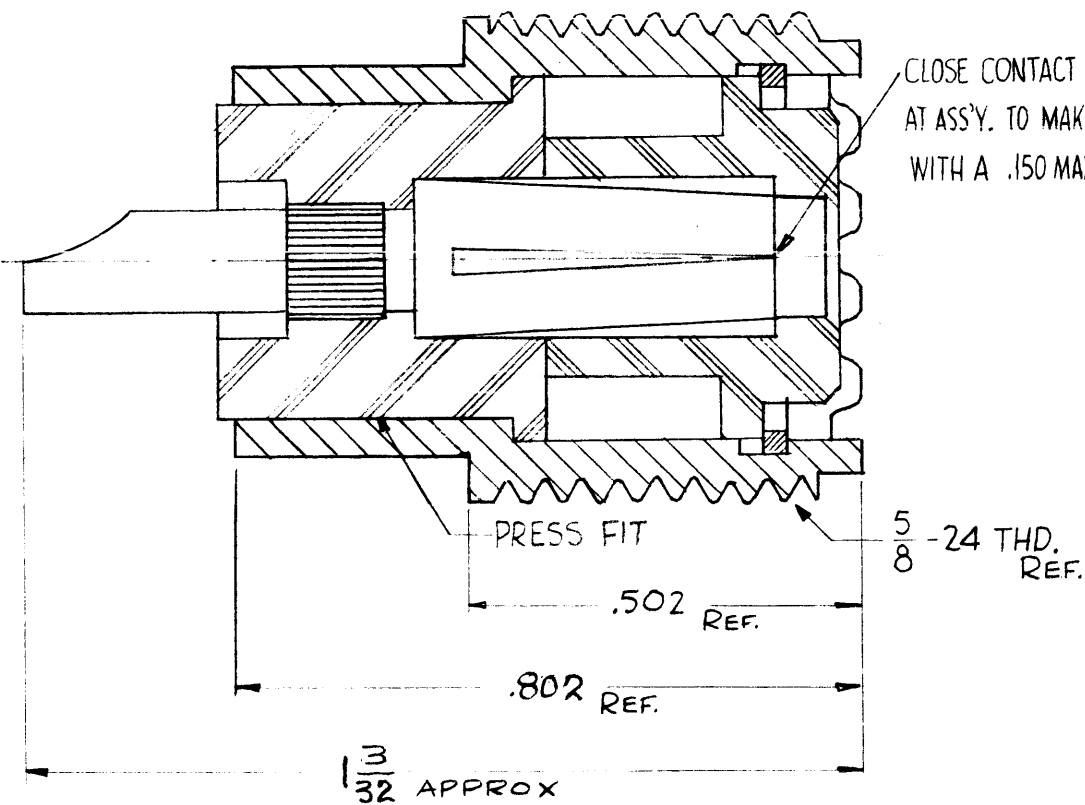
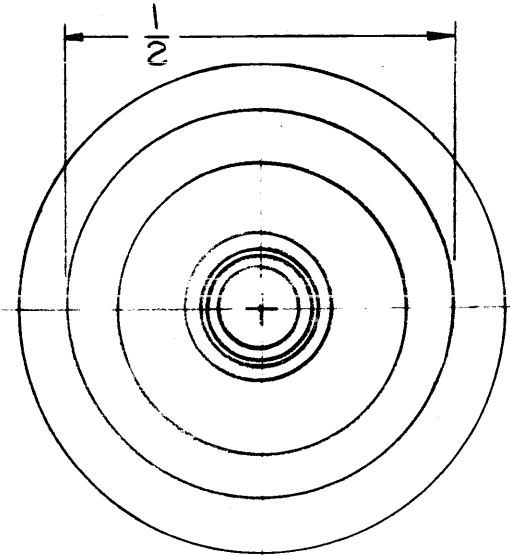
JJ-218
A

MATERIAL

EXTERNAL PARTS ~ BRASS MACHINED
CONTACT ~ BERYLLIUM COPPER
INSULATION ~ TEFLON

FINISH

EXT. PARTS ~ COPPER PLATE, .0001 THK.
PLUS SILVER PLATE, .0002 THK.
PLUS RHODIUM FLASH, .00005 THK.
CONTACT ~ GOLD PLATE, .0001 THK.



NOTE ~ CONNECTOR SHALL PASS HIGH POTENTIAL TEST OF 1500V. RMS.

NOTICE TO PERSONS RECEIVING THIS DRAWING

THE TECHNICAL MATERIEL CORPORATION claims proprietary right in the material disclosed hereon. This drawing is issued in confidence for engineering information only and may not be reproduced or used to manufacture anything shown herein without permission from THE TECHNICAL MATERIEL CORPORATION to the user. This drawing is loaned for mutual assistance and is subject to recall at any time.

Property of:
THE TECHNICAL MATERIEL CORPORATION
MAMARONECK, NEW YORK

A	1/2 DIM. WAS .470; S-401-70-2429 WAS 6804-1 HEX NUT & LOCKWASHER DELETED	5-22-62	6733	EE		
SYM	DESCRIPTION	DATE	CH. NO.	DRAFTS	CHECKER	ENG. APP.
UNLESS OTHERWISE SPECIFIED:		SCALE: S-401-70-2429				
DIMENSIONS ARE IN INCHES		MAXIMUM ALLOWABLE TOLERANCES HAVE BEEN DETERMINED AND ANY DEVIATIONS WILL BE CAUSE FOR REJECTION.				
TOLERANCES ON FRACTIONS ± 1/64		REMOVE ALL BURRS AND SHARP EDGES				
DECIMALS ± .005						
ANGLES ± 1/2°						

REQ. PER UNIT	MODEL	SECTION	ASS'Y. NO.	DATE
				5-30-61
USED ON				

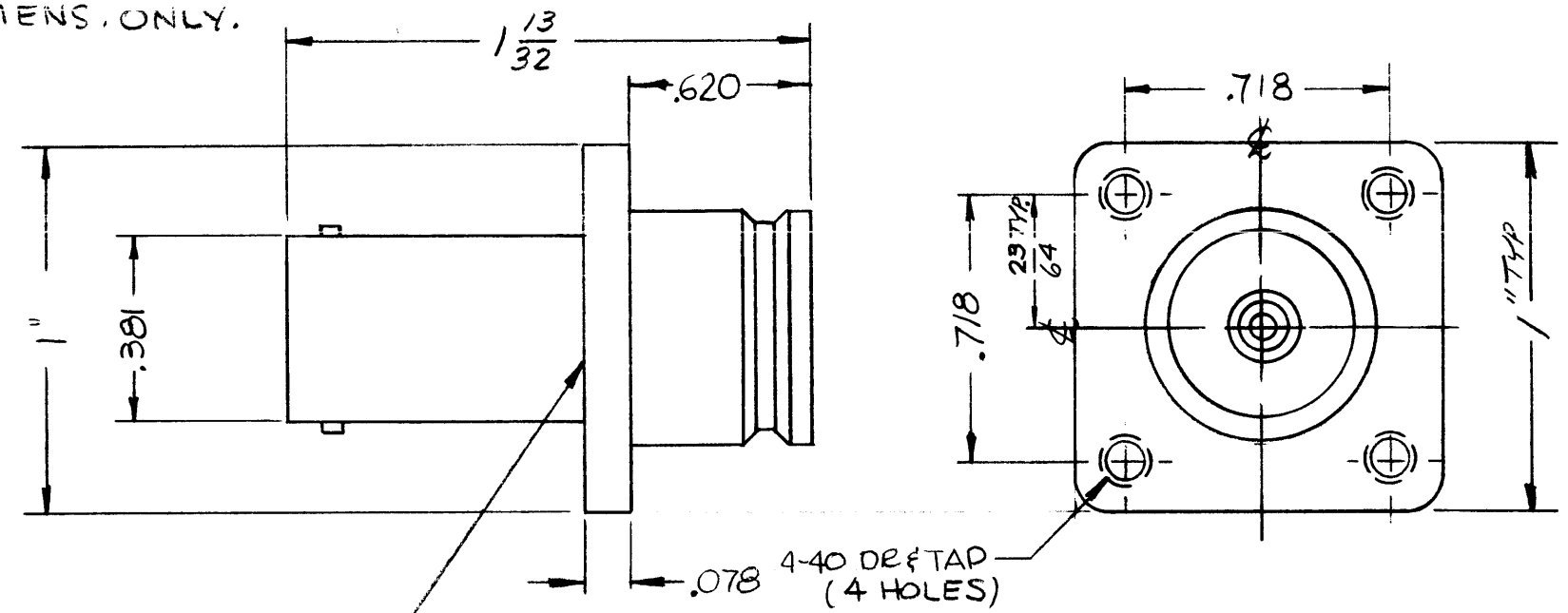
REQ. ITEM	PART NO.	DESCRIPTION	SYMBOL
STOCK SIZE		THE TECHNICAL MATERIEL CORP. MAMARONECK, NEW YORK	
		RECEPTACLE, BULKHEAD, UHF Series	
MATERIAL			
TYPE & TEMPER	HEAT TREAT. SPEC.	DRAWN	CHECKER
FINISH & SPEC. NO.		ELEC. DES. APP.	MECH. DES. APP.
			JJ-218
			A

JJ-227
A

SPECIFICATIONS
 SERIES - BNC(F) TO QDS (F)
 NO. OF CONTACTS - ONE (1)
 TYPE OF CONTACT - FEMALE
 DIELECTRIC - TEFLON
ELECTRICAL DATA
 MAX. PEAK VOLT. - 5KV
 FREQ. LIMIT - 1,000 MCS
 NOM. IMPEDANCE - 50Ω

MATERIAL
 EXTERNAL PARTS - BRASS
 CONTACT - BERYLLIUM COPPER
FINISH
 EXTERNAL PARTS - SILVER PLATE &
 RHODIUM FLASH
 CONTACT - SILVER PLATE &
 GOLD FLASH

REF. DIMENS. ONLY.



NOTE:
 METAL STAMP TMC PART NO.
 JJ-227, 1/8 HIGH GOTHIC.

NOTICE TO PERSONS RECEIVING THIS DRAWING

THE TECHNICAL MATERIEL CORPORATION claims proprietary right in the material disclosed hereon. This drawing is issued in confidence for engineering information only and may not be reproduced or used to manufacture anything shown hereon without permission from THE TECHNICAL MATERIEL CORPORATION to the user. This drawing is loaned for mutual assistance and is subject to recall at any time.

Property of:
 THE TECHNICAL MATERIEL CORPORATION
 MAMARONECK, NEW YORK

SYM	DESCRIPTION	DATE	CH. NO.	DRAFTS	CHECKER	ENG. APP.
A	DIM. .620 & .078 ADDED 4-40 HOLE WAS 1/8	4-12-66	16085	WVW	QCF	MM

UNLESS OTHERWISE SPECIFIED:
 DIMENSIONS ARE IN INCHES
 TOLERANCES ON FRACTIONS ± 1/64 DECIMALS ± .05 ANGLES ± 1/2°

SCALE: S401-70-2349
 MAXIMUM ALLOWABLE TOLERANCES HAVE BEEN DETERMINED AND ANY DEVIATIONS WILL BE CAUSE FOR REJECTION.
 REMOVE ALL BURRS AND SHARP EDGES

REQ. PER UNIT	MODEL	SECTION	ASS'Y. NO.	DATE
				11-17-61

USED ON

REQ. ITEM	PART NO.	DESCRIPTION	SYMBOL
		THE TECHNICAL MATERIEL CORP. MAMARONECK, NEW YORK	
		ADAPTER, CONNECTOR, RECEPTACLE, BNC TO QDS	
		MATERIAL	
		TYPE & TEMPER	
		HEAT TREAT. SPEC.	
		FINISH & SPEC. NO.	
		ELEC. DES. APP.	
		MECH. DES. APP.	
		DRAWN	
		CHECKER	
		FINAL APPROVAL	
		JJ-227	A

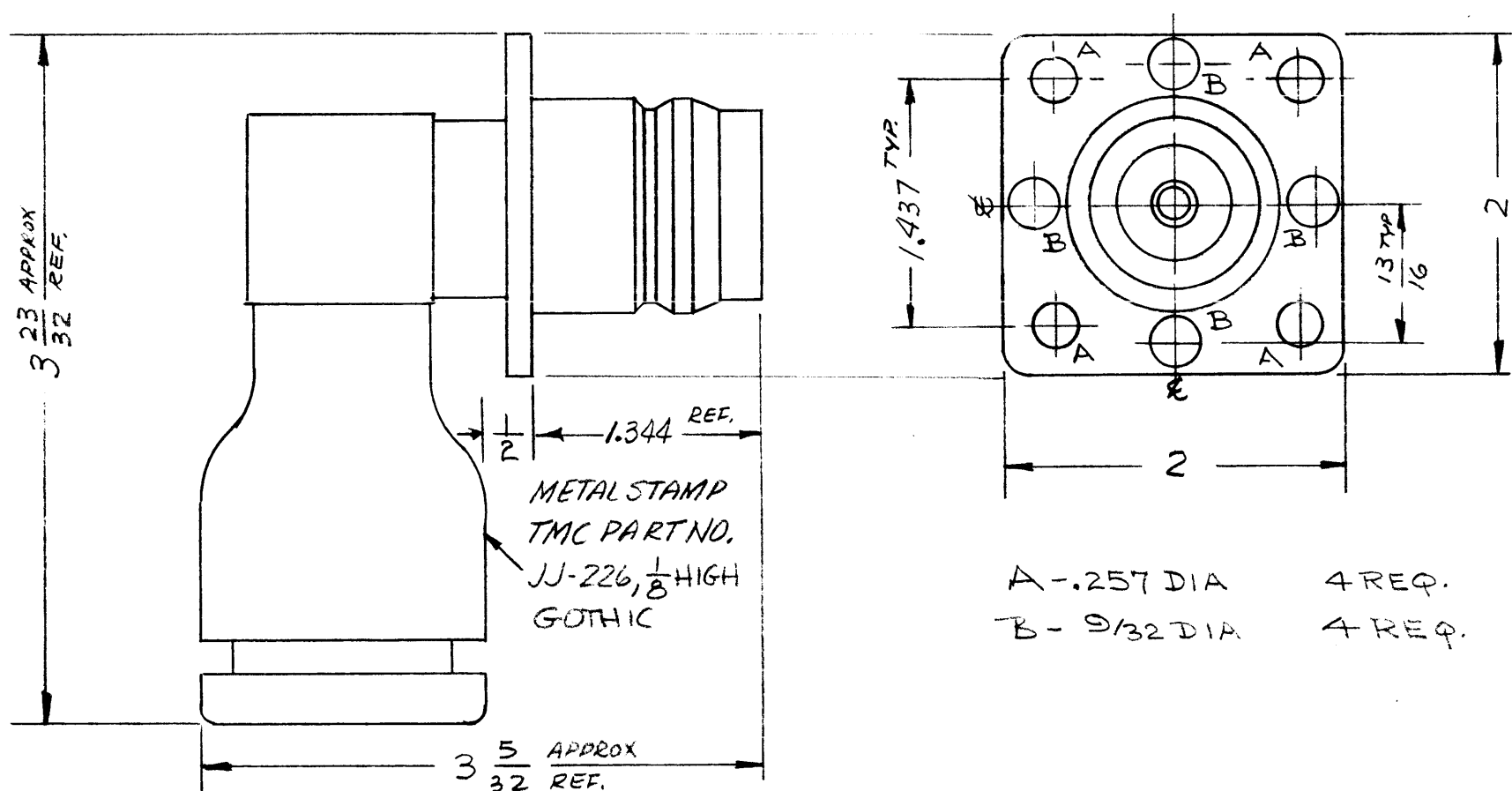
JJ-226

SPECIFICATIONS

SERIES - QDL
 NO. OF CONTACTS - ONE (1)
 TYPE OF CONTACTS - FEMALE
 DIELECTRIC - TEFLON
ELECTRICAL DATA
 MAX. PEAK VOLTAGE - 10 KV
 FREQUENCY LIMIT - 1000 MCS
 NOM. IMPEDANCE - 50Ω

MATERIAL

EXTERNAL PARTS - BRASS
 CONTACT - BERYLLIUM COPPER
FINISH
 EXTERNAL PARTS - SILVER PLATE &
 RHODIUM FLASH
 CONTACT - SILVER PLATE &
 GOLD FLASH



NOTICE TO PURCHASER CONCERNING THIS DRAWING

THE TECHNICAL MATERIEL CORPORATION claims proprietary right in the matter disclosed hereon. This drawing is issued in confidence for engineering information only and may not be reproduced or used to manufacture anything shown hereon without permission from THE TECHNICAL MATERIEL CORPORATION to the user. This drawing is loaned for mutual assistance and is subject to recall at any time.

Property of:

THE TECHNICAL MATERIEL CORPORATION
 MAMARONECK, NEW YORK

SYM	DESCRIPTION	DATE	CH. NO.	DRAFTS	CHECKER	ENG. APP.

UNLESS OTHERWISE SPECIFIED:
 DIMENSIONS ARE IN INCHES
 TOLERANCES ON FRACTIONS ± 1/64 DECIMALS ± .05 ANGLES ± 1/2°

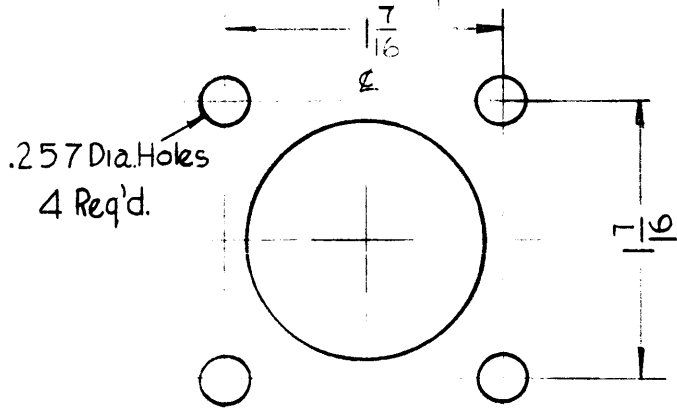
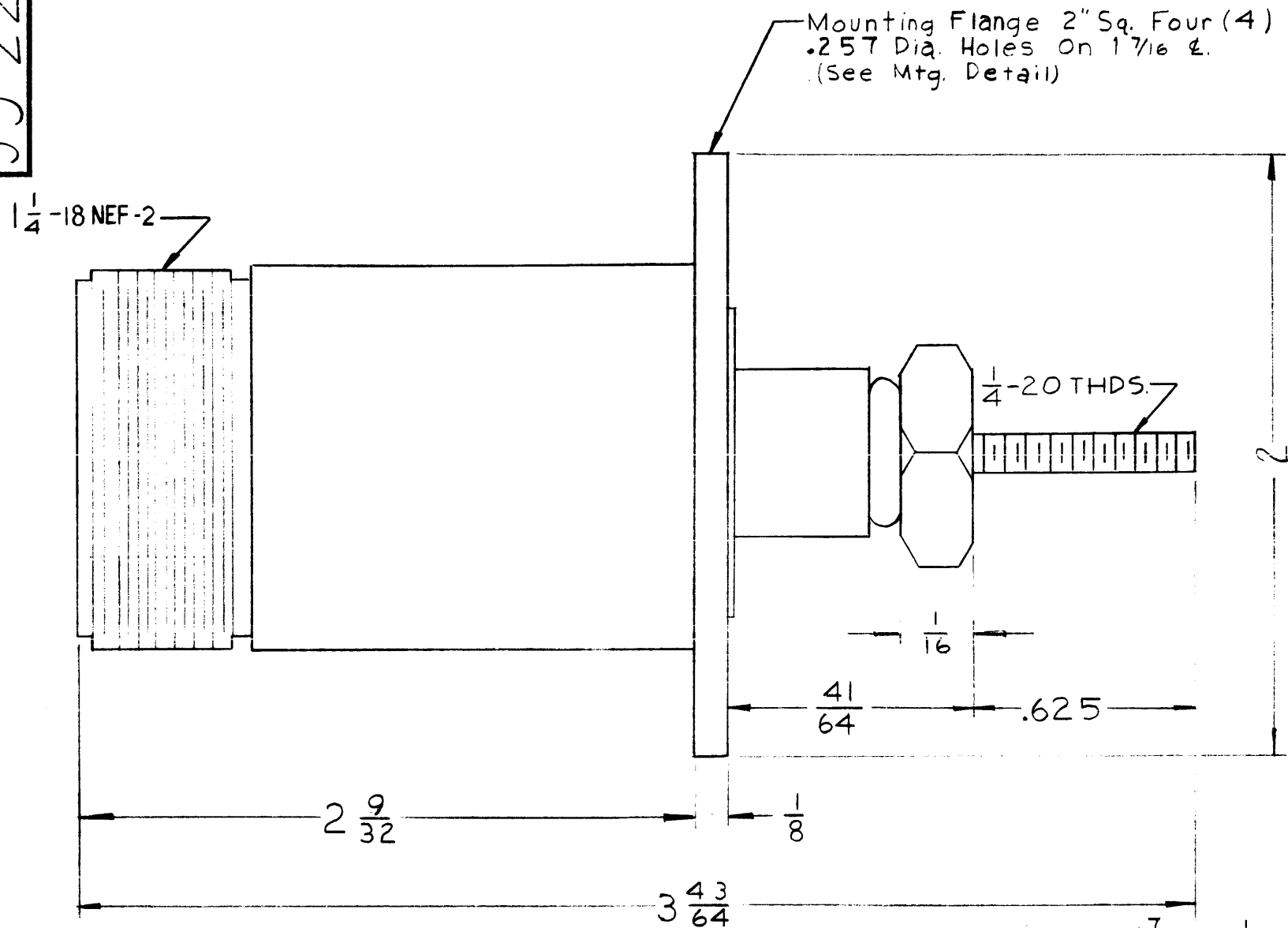
SCALE: S 401-70 (2351)
 MAXIMUM ALLOWABLE TOLERANCES HAVE BEEN DETERMINED AND ANY DEVIATIONS WILL BE CAUSE FOR REJECTION.
 REMOVE ALL BURRS AND SHARP EDGES

REQ. PER UNIT	MODEL	SECTION	ASS'Y. NO.	DATE
				11-18-61

USED ON

REQ.	ITEM	PART NO.	DESCRIPTION	SYMBOL
			THE TECHNICAL MATERIEL CORP. MAMARONECK, NEW YORK	
			ADAPTER, CONNECTOR RECEPTACLE, QDL.	
			ab	
			DRAWN	CHECKER
			FINAL APPROVAL	
			JJ-226	

JJ-229



SPECIFICATIONS

SERIES ~ LC
 NO. OF CONTACTS ~ ONE (1)
 TYPE OF CONTACT ~ FEMALE
 DIELECTRIC ~ TEFLON

ELECTRICAL DATA

MAX. PEAK OPR. VOLTAGE ~10KV
 NOMINAL IMPEDANCE 50^Ω

MATERIAL

EXTERNAL PARTS ~ BRASS
 CONTACTS ~ BERYLLIUM COPPER

FINISH

EXTERNAL PARTS ~ SILVER PLATE &
 RHODIUM FLASH
 CONTACTS ~ SILVER PLATE &
 GOLD FLASH

NOTICE TO PERSONS RECEIVING THIS DRAWING

THE TECHNICAL MATERIEL CORPORATION claims proprietary right in the material disclosed hereon. This drawing is issued in confidence for engineering information only and may not be reproduced or used to manufacture anything shown hereon without permission from THE TECHNICAL MATERIEL CORPORATION to the user. This drawing is loaned for mutual assistance and is subject to recall at any time.

Property of:
 THE TECHNICAL MATERIEL CORPORATION
 MAMARONECK, NEW YORK

SYM	DESCRIPTION	DATE	CH. NO.	DRAFTS	CHECKER	ENG. APP.
UNLESS OTHERWISE SPECIFIED:		SCALE: 5-401-70-(2371)				
DIMENSIONS ARE IN INCHES		MAXIMUM ALLOWABLE TOLERANCES HAVE BEEN DETERMINED AND ANY DEVIATIONS WILL BE CAUSE FOR REJECTION.				
TOLERANCES ON FRACTIONS ± 1/64 DECIMALS ± .005 ANGLES ± 1/2°		REMOVE ALL BURRS AND SHARP EDGES				

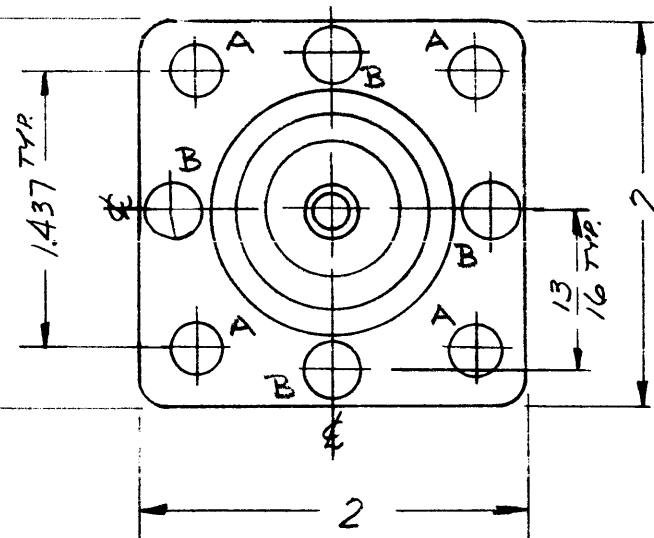
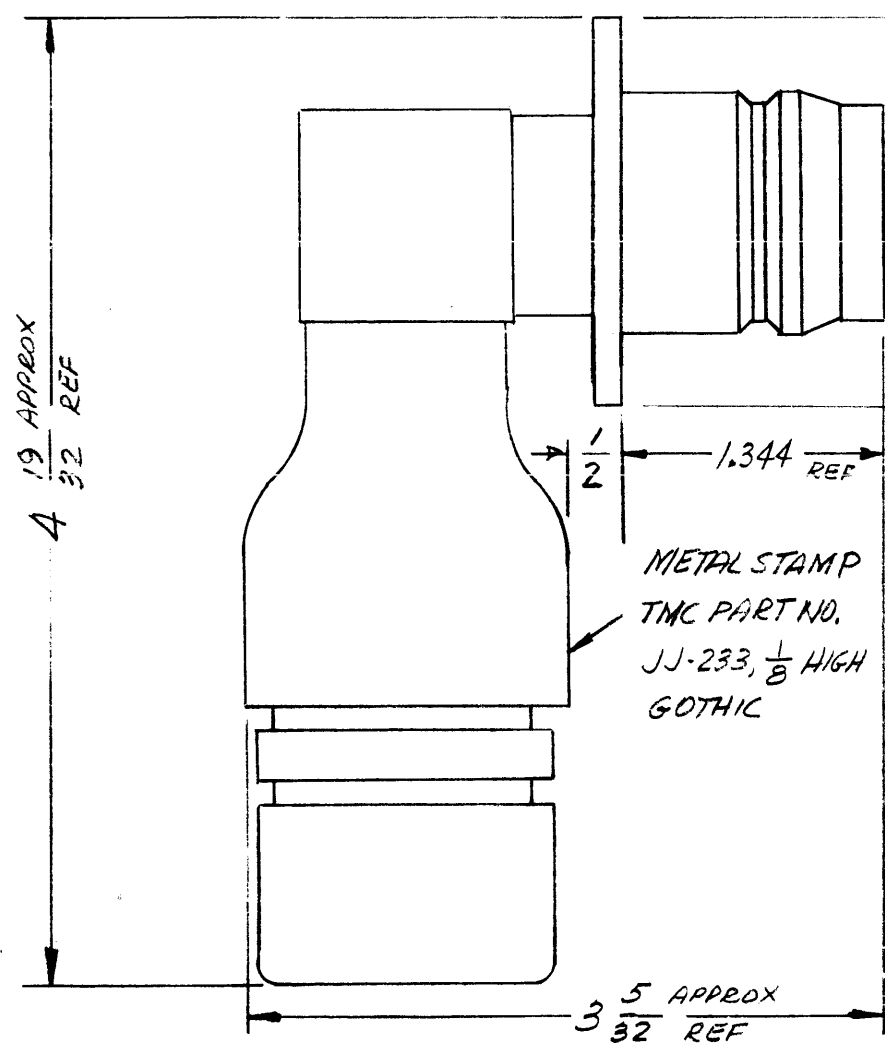
REQ. PER UNIT	MODEL	SECTION	ASS'Y. NO.	DATE
				10-24-61
USED ON				

REQ. ITEM	PART NO.	DESCRIPTION	SYMBOL
		THE TECHNICAL MATERIEL CORP. MAMARONECK, NEW YORK	
STOCK SIZE		CONNECTOR, RECEPTACLE	
MATERIAL		LC SERIES	
		EA	JWB
		DRAWN	CHECKER
		aa	
FINISH & SPEC. NO.		ELEC. DES. APP.	MECH. DES. APP.
			JJ-229

JJ-233

SPECIFICATIONS
 SERIES - QDL
 NO. OF CONTACTS - ONE (1)
 TYPE OF CONTACTS - FEMALE
 DIELECTRIC - TEFLON
 ELECTRICAL DATA
 MAX. PEAK VOLTAGE - 10KV
 FREQUENCY LIMIT - 1,000 MCS
 NOM. IMPEDANCE - 50Ω

MATERIAL
 EXTERNAL PARTS - BRASS
 CONTACTS - BERYLLIUM COPPER
 FINISH
 EXTERNAL PARTS - SILVER PLATE &
 RHODIUM FLASH
 CONTACTS - SILVER PLATE &
 GOLD FLASH



A - .257 DIA 4 REQ.
 B - 9/32 DIA 4 REQ.

NOTICE TO PERSONS RECEIVING THIS DRAWING

THE TECHNICAL MATERIEL CORPORATION claims proprietary right in the material disclosed hereon. This drawing is issued in confidence for engineering information only and may not be reproduced or used to manufacture anything shown hereon without permission from THE TECHNICAL MATERIEL CORPORATION to the user. This drawing is loaned for mutual assistance and is subject to recall at any time.

Property of:
 THE TECHNICAL MATERIEL CORPORATION
 MAMARONECK, NEW YORK

SYM	DESCRIPTION	DATE	CH. NO.	DRAFTS	CHECKER	ENG. APP.

UNLESS OTHERWISE SPECIFIED:
 DIMENSIONS ARE IN INCHES
 TOLERANCES ON FRACTIONS $\pm 1/64$ DECIMALS $\pm .005$ ANGLES $\pm 1/20$

SCALE: S401-70-(2355)
 MAXIMUM ALLOWABLE TOLERANCES HAVE BEEN DETERMINED AND ANY DEVIATIONS WILL BE CAUSE FOR REJECTION. REMOVE ALL BURRS AND SHARP EDGES

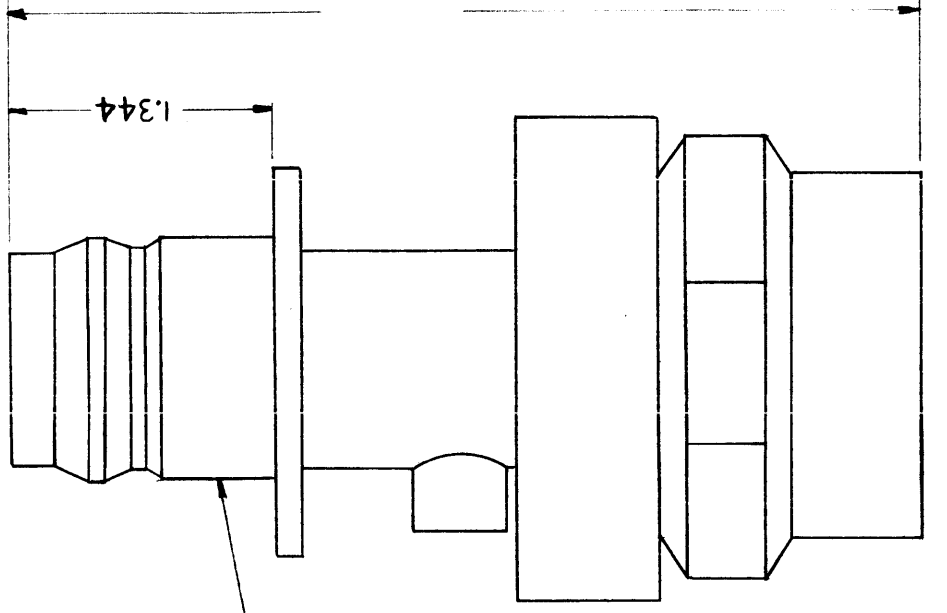
REQ.	ITEM	PART NO.	DESCRIPTION	SYMBOL
			THE TECHNICAL MATERIEL CORP. MAMARONECK, NEW YORK	
			STOCK SIZE	
			ADAPTER, CONNECTOR	
			MATERIAL	
			RECEPTACLE, QDL	
			AB	
			JW	
			STM	
			11-18-61	
			TYPE & TEMPER	
			HEAT TREAT. SPEC.	
			DRAWN	
			CHECKER	
			FINAL APPROVAL	
			JJ-233	
			FINISH & SPEC. NO.	
			ELEC. DES. APP.	
			MECH. DES. APP.	

JJ-234

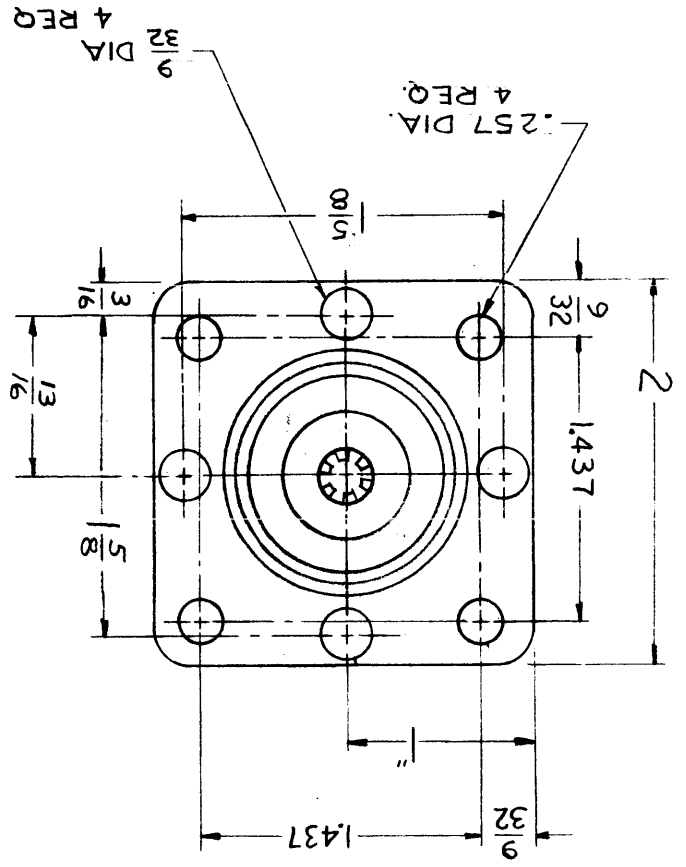
THE CONTENTS OF THIS DRAWING ARE THE EXCLUSIVE PROPERTY OF THE TECHNICAL MATERIEL CORP. ITS UNAUTHORIZED USE OR REPRODUCTION IN WHOLE OR IN PART IS STRICTLY FORBIDDEN.

SPECIFICATIONS
 SERIES ~ QDL
 N° OF CONTACTS ~ ONE (1)
 TYPE OF CONTACT ~ FEMALE
 DIELECTRIC ~ TEFLON
 ELECTRICAL DATA
 MAX. PEAK OP.R. VOLT ~
 NOMINAL IMPEDANCE ~ 70Ω
 CABLE ACCOMODATIONS
 TYPE ~ 1-1/8 STYROFLEX
 MAX. O.D. ~

MATERIAL
 EXTERNAL PARTS ~ ALUMINIUM
 CONTACTS ~ FEMAL - BERYLLIUM
 FINISH
 EXTERNAL PARTS ~
 CONTACTS ~



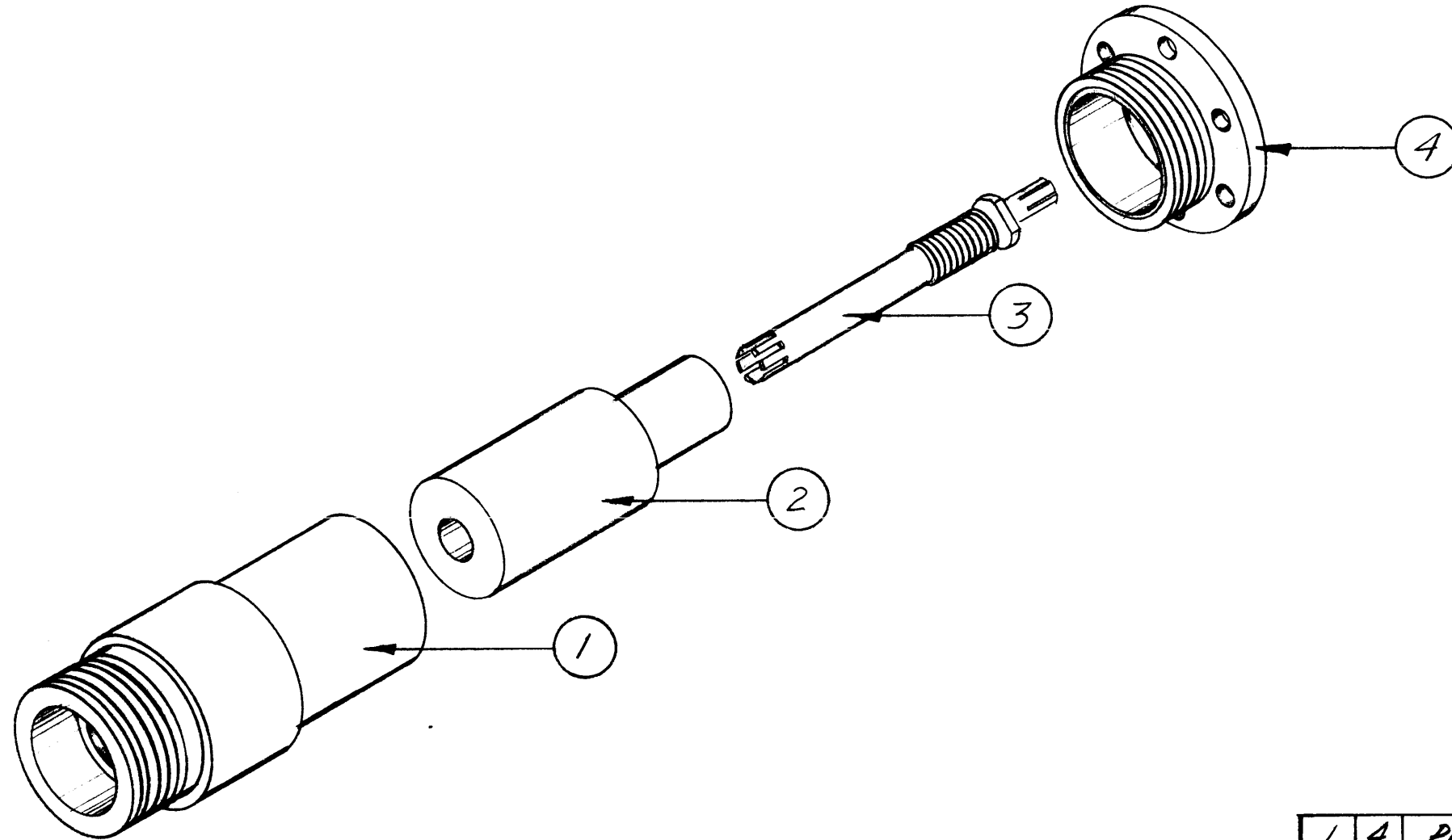
METAL STAMP TMC
 PART NO. JJ-234



SYMBOL		DESCRIPTION		REQ. ITEM	PART NO.	THE TECHNICAL MATERIEL CORP. MAMARONECK, NEW YORK		SEE NOTE		STOCK SIZE		CONNECTOR, RECEPTACLE		1-1/8 STYROFLEX-70Ω-TQDL		G.S.		CHECKED		FINAL APPROVAL		JJ-234					
UNLESS OTHERWISE SPECIFIED:		DIMENSIONS ARE IN INCHES		TOLERANCES ON		FRACTIONS ± 1/64 DECIMALS ± .05 ANGLES ± 1/2°		REMOVE ALL BURRS AND SHARP EDGES		WILL BE CAUSE FOR REJECTION.		BEEN DETERMINED AND ANY DEVIATIONS		MAXIMUM ALLOWABLE TOLERANCES HAVE		SCALE: 5-401-70-(2424)		DATE		CH. NO.		DRAFTS		CHECKER		ENG. APP.	
DESCRIPTION		DATE		CH. NO.		DRAFTS		CHECKER		ENG. APP.		PER		MODEL		SECTION		ASSY. NO.		DATE		FINISH & SPEC. NO.		ELEC. DES. APP.		MECH. DES. APP.	
USED ON		PER UNIT		MODEL		SECTION		ASSY. NO.		DATE		FINISH & SPEC. NO.		ELEC. DES. APP.		MECH. DES. APP.		JJ-234		JJ-234		JJ-234		JJ-234		JJ-234	

THE CONTENTS OF THIS DRAWING ARE THE EXCLUSIVE PROPERTY OF THE TECHNICAL MATERIEL CORP. ITS UNAUTHORIZED USE OR REPRODUCTION IN WHOLE OR IN PART IS STRICTLY FORBIDDEN.

JJ-237



REQ.	ITEM	PART NO.	DESCRIPTION	SYMBOL
1	4	PM-382	FLANGE, RECP. CONN.	
1	3	PM-741	CONTACT, RECP. CONN.	
1	2	PX-648	INSULATOR, BUSHING	
1	1	PM-740	BODY, RECP. CONN.	
			THE TECHNICAL MATERIEL CORP. MAMARONECK, NEW YORK	
			CONNECTOR, RECEPTACLE, ELECTRICAL (LC)	
			TYPE & TEMPER	HEAT TREAT. SPEC.
			DRAWN	CHECKED
			FINISH & SPEC. NO.	ELEC. DES. APP. MECH. DES. APP.

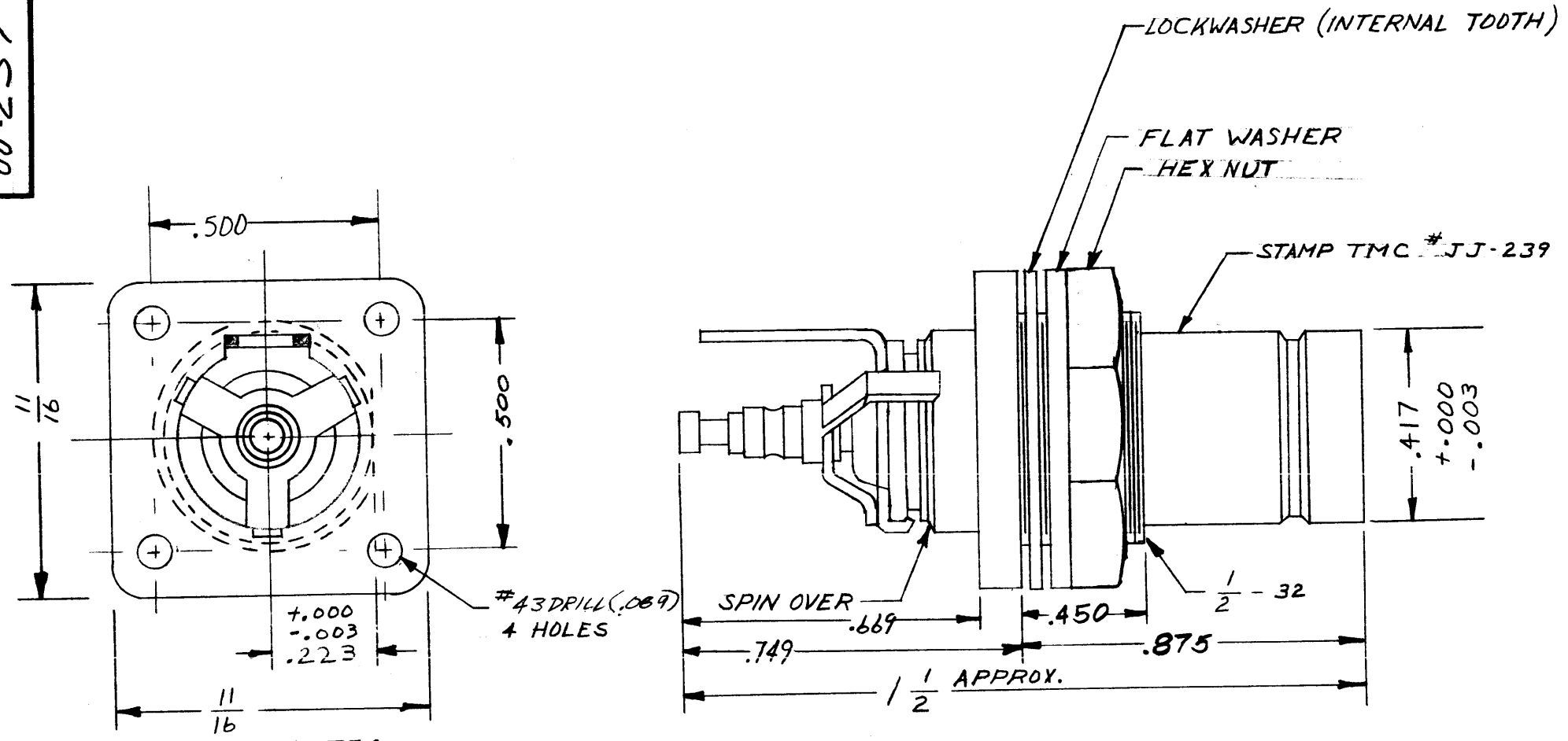
SYM	DESCRIPTION	DATE	CH. NO.	DRAFTS	CHECKER	ENG. APP.
	UNLESS OTHERWISE SPECIFIED: DIMENSIONS ARE IN INCHES TOLERANCES ON FRACTIONS ± 1/64 DECIMALS ± .005 ANGLES ± 1/2°					
	SCALE: S-401-70-(2690)					
	MAXIMUM ALLOWABLE TOLERANCES HAVE BEEN DETERMINED AND ANY DEVIATIONS WILL BE CAUSE FOR REJECTION. REMOVE ALL BURRS AND SHARP EDGES					

REQ. PER UNIT	MODEL	SECTION	ASS'Y. NO.	DATE
	LC			12-21-61
USED ON				

STANDARD DRAWING

JJ-239

THE CONTENTS OF THIS DRAWING ARE THE EXCLUSIVE PROPERTY OF THE TECHNICAL MATERIEL CORP. ITS UNAUTHORIZED USE OR REPRODUCTION IN WHOLE OR IN PART IS STRICTLY FORBIDDEN.



NOTE:
 1 UPON ENGAGEMENT OF MATING CONNECTOR THE INSULATOR ASSEMBLY MOVES BACK 0.085
 2 CONNECTOR TO BE SUPPLIED WITH PLASTIC CAP MOUNTED, AND HARDWARE BULK PACKED.

ASSIGNED PATENT No. 2,767,267

SPECIFICATIONS

SERIES - QDM
 NO. OF CONTACTS - ONE (1)
 TYPE OF CONTACTS - SWITCH TYPE
 DIELECTRIC - TEFLON

ELECTRICAL DATA

MAX PEAK VOLTAGE - 500 V
 FREQ. LIMIT - 10,000
 NOM. IMPEDANCE - 50 or 70 OHMS

CABLE ACCOMMODATIONS

TYPE -
 MAX. O.D. -
 IMPEDANCE -

MATERIAL

EXTERNAL PARTS - BRASS
 CONTACTS - BERYLLIUM COPPER

FINISH

EXTERNAL PARTS - SILVER PLATE & RHODIUM FLASH
 CONTACTS - SILVER PLATE & GOLD FLASH

SYM	DESCRIPTION	DATE	CH. NO.	DRAFTS	CHECKER	ENG. APP.
B	NOTE 2, #43 DRILL (.089) ADD TAP REM	12/29/65	15472	F.V.V.	JCB	JCB
A	.500 DIA - 1/2, #43 WAS .381, .875 WAS .806 HEX WAS RING NUT PATENT NO ADDED	10/18/65	14945	F.V.V.	JCB	JCB

UNLESS OTHERWISE SPECIFIED:
 DIMENSIONS ARE IN INCHES
 TOLERANCES ON FRACTIONS ± 1/64 DECIMALS ± .05 ANGLES ± 1/2°

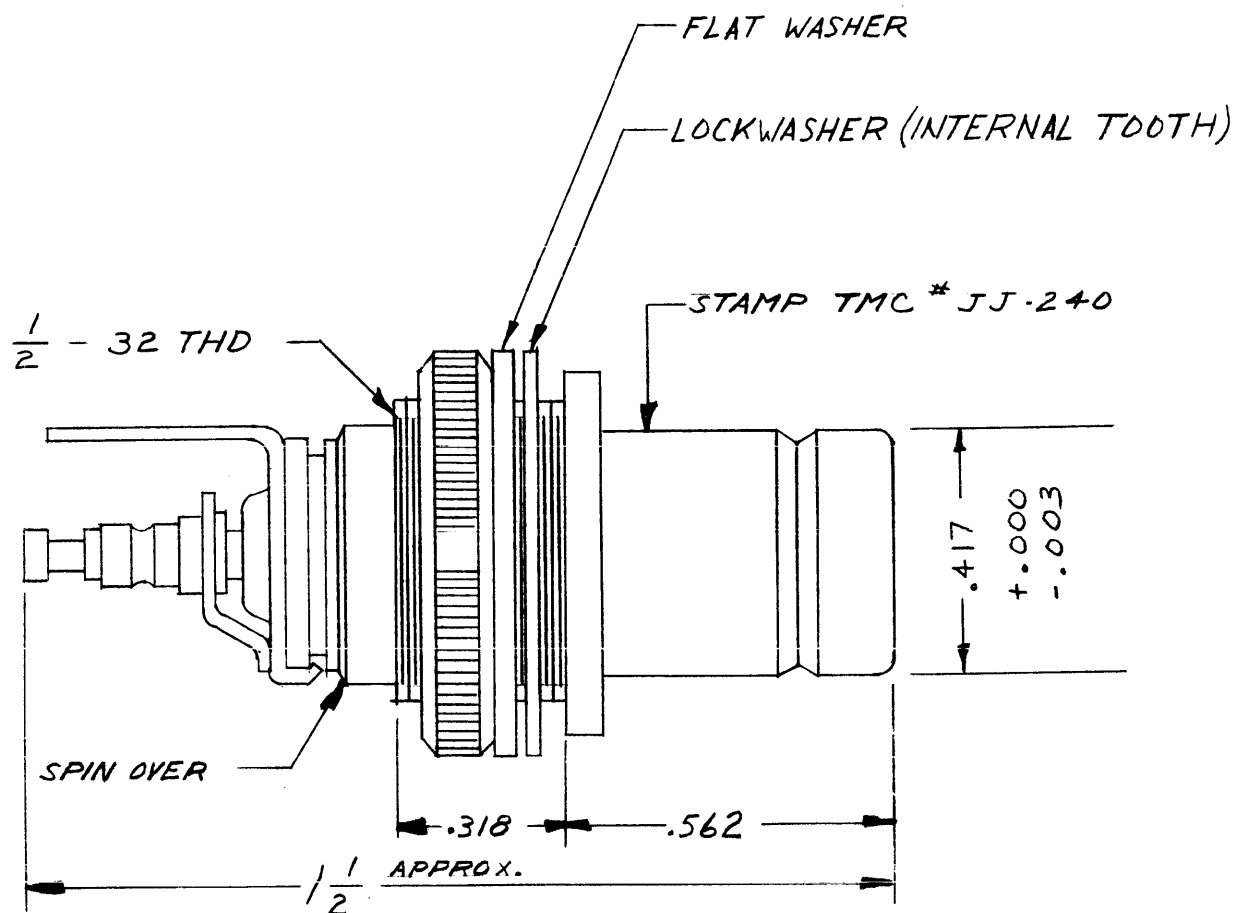
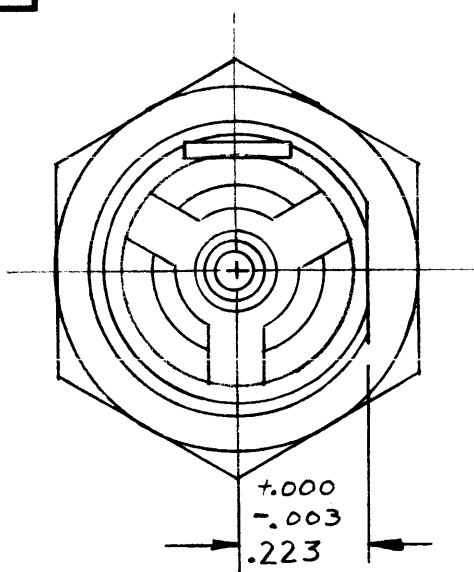
SCALE: 5401-70 (3277)
 MAXIMUM ALLOWABLE TOLERANCES HAVE BEEN DETERMINED AND ANY DEVIATIONS WILL BE CAUSE FOR REJECTION.
 REMOVE ALL BURRS AND SHARP EDGES

REQ. PER UNIT	MODEL	SECTION	ASS'Y. NO.	DATE

REQ.	ITEM	PART NO.	DESCRIPTION	SYMBOL
			THE TECHNICAL MATERIEL CORP. MAMARONECK, NEW YORK	
			CONNECTOR, RECEPTACLE, ELECTRICAL	
			SEE NOTE	
			G. SENCEN	
			DRAWN	
			CHECKED	
			FINAL APPR VAL	
			JJ-239	B

THE CONTENTS OF THIS DRAWING ARE THE EXCLUSIVE PROPERTY OF THE TECHNICAL MATERIEL CORP. ITS UNAUTHORIZED USE OR REPRODUCTION IN WHOLE OR IN PART IS STRICTLY FORBIDDEN.

JJ-240



NOTE:
UPON ENGAGEMENT OF MATING CONNECTOR THE INSULATOR ASSEMBLY MOVES BACK 0.085

SPECIFICATIONS

SERIES - QDM
NO. OF CONTACTS - ONE (1)
TYPE OF CONTACTS - SWITCH TYPE
DIELECTRIC - TEFLON

ELECTRICAL DATA

MAX. PEAK VOLTAGE - 500 V
FREQ. LIMIT - 10,000
NOM. IMPEDANCE - 50 OR 70 OHMS

CABLE ACCOMMODATIONS

TYPE -
MAX. O.D. -
IMPEDANCE -

MATERIAL

EXTERNAL PARTS - BRASS
CONTACTS - BERYLLIUM COPPER

FINISH

EXTERNAL PARTS - SILVER PLATE & RHODIUM FLASH
CONTACTS - SILVER PLATE & GOLD FLASH

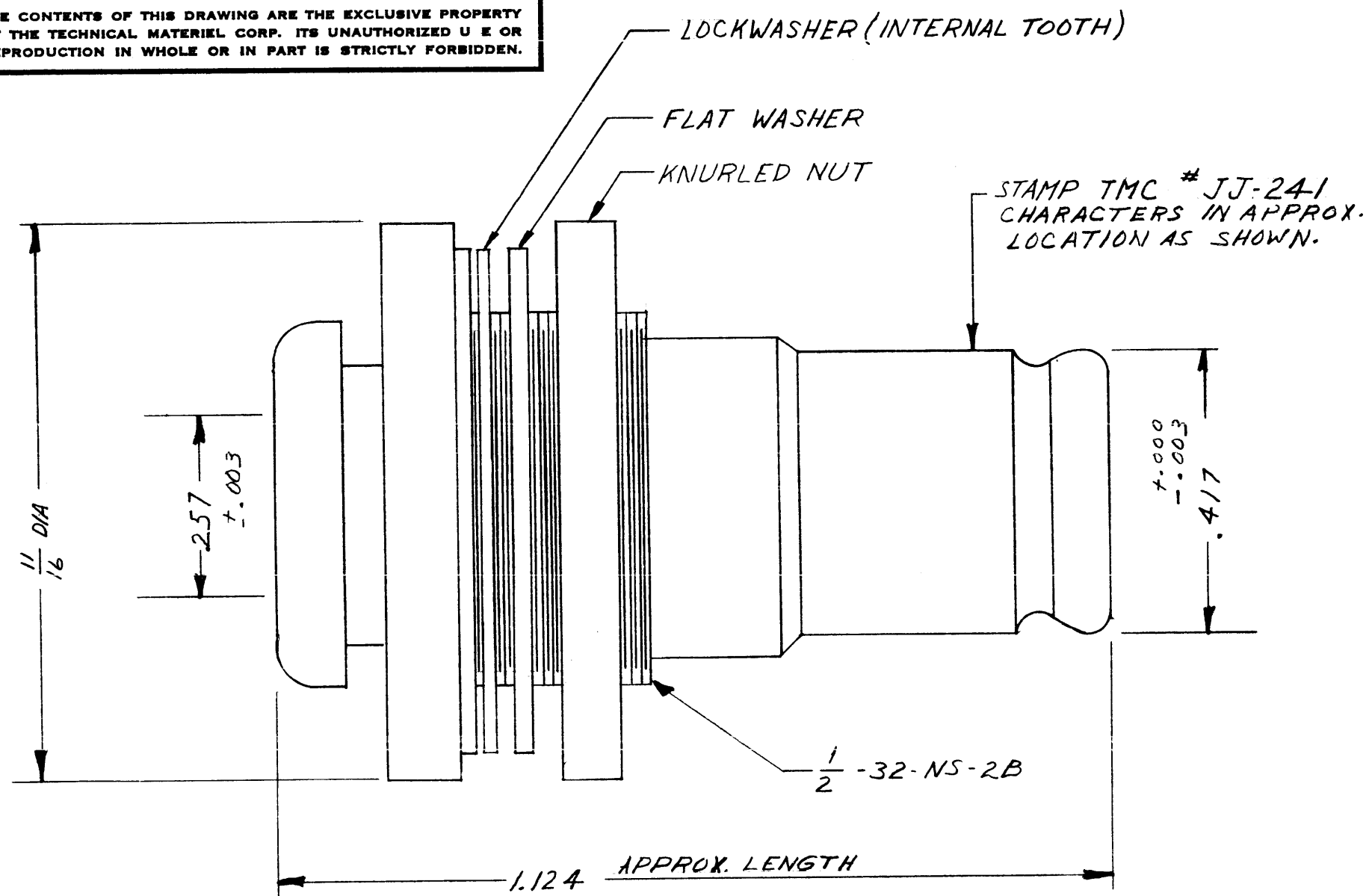
SYM	DESCRIPTION	DATE	CH. NO.	DRAFTS	CHECKER	ENG. APP.
UNLESS OTHERWISE SPECIFIED:		SCALE: S 401-70 (3278)				
DIMENSIONS ARE IN INCHES		MAXIMUM ALLOWABLE TOLERANCES HAVE BEEN DETERMINED AND ANY DEVIATIONS WILL BE CAUSE FOR REJECTION.				
TOLERANCES ON FRACTIONS ± 1/64 DECIMALS ± .05 ANGLES ± 1/2°		REMOVE ALL BURRS AND SHARP EDGES				

REQ. PER UNIT	MODEL	SECTION	ASS'Y. NO.	DATE
				11-20-62
USED ON				

REQ.	ITEM	PART NO.	DESCRIPTION	SYMBOL
STOCK SIZE			THE TECHNICAL MATERIEL CORP. MAMARONECK, NEW YORK	
SEE NOTE			CONNECTOR, RECEPTACLE, ELECTRICAL	
MATERIAL				
		G. SENCEN	file	BP
TYPE & TEMPER		HEAT TREAT. SPEC.	DRAWN	CHECKED
SEE NOTE				FINAL APPROVAL
FINISH & SPEC. NO.		ELEC. DES. APP.	MECH. DES. APP.	JJ-240

JJ-241

THE CONTENTS OF THIS DRAWING ARE THE EXCLUSIVE PROPERTY OF THE TECHNICAL MATERIEL CORP. ITS UNAUTHORIZED USE OR REPRODUCTION IN WHOLE OR IN PART IS STRICTLY FORBIDDEN.



SPECIFICATIONS

SERIES - QDM
 NO. OF CONTACTS - ONE (1)
 DIELECTRIC - TEFLON

ELECTRICAL DATA

MAX. PEAK VOLTAGE - 500V
 FREQ. LIMIT - 10,000
 NOM. IMPEDANCE - 70 Ω

CABLE ACCOMMODATIONS

TYPE - RG-59/U AND RG-62/U
 MAX. O.D. - .242
 IMPEDANCE - 75 ± 3 OHMS

MATERIAL

EXTERNAL PARTS - BRASS
 CONTACTS - BERYLLIUM COPPER

FINISH

EXTERNAL PARTS - SILVER PLATE & RHODIUM FLASH
 CONTACTS - SILVER PLATE & GOLD FLASH

SYM	DESCRIPTION	DATE	CH. NO.	DRAFTS	CHECKER	ENG. APP.
UNLESS OTHERWISE SPECIFIED:		SCALE: 3/401-70 (3015)				
DIMENSIONS ARE IN INCHES		MAXIMUM ALLOWABLE TOLERANCES HAVE BEEN DETERMINED AND ANY DEVIATIONS WILL BE CAUSE FOR REJECTION.				
TOLERANCES ON FRACTIONS ± 1/64 DECIMALS ± .005 ANGLES ± 1/2°		REMOVE ALL BURRS AND SHARP EDGES				

REQ. PER UNIT	MODEL	SECTION	ASS'Y. NO.	DATE
				11-26-65

REQ.	ITEM	PART NO.	DESCRIPTION	SYMBOL
			THE TECHNICAL MATERIEL CORP. MAMARONECK, NEW YORK	
SEE NOTE			CONNECTOR, RECEPTACLE, ELECTRICAL	
MATERIAL				
TYPE & TEMPER		HEAT TREAT. SPEC.	DRAWN	CHECKED
SEE NOTE				FINAL APPROVAL
FINISH & SPEC. NO.		ELEC. DES. APP.	MECH. DES. APP.	JJ-241

JJ-246
A

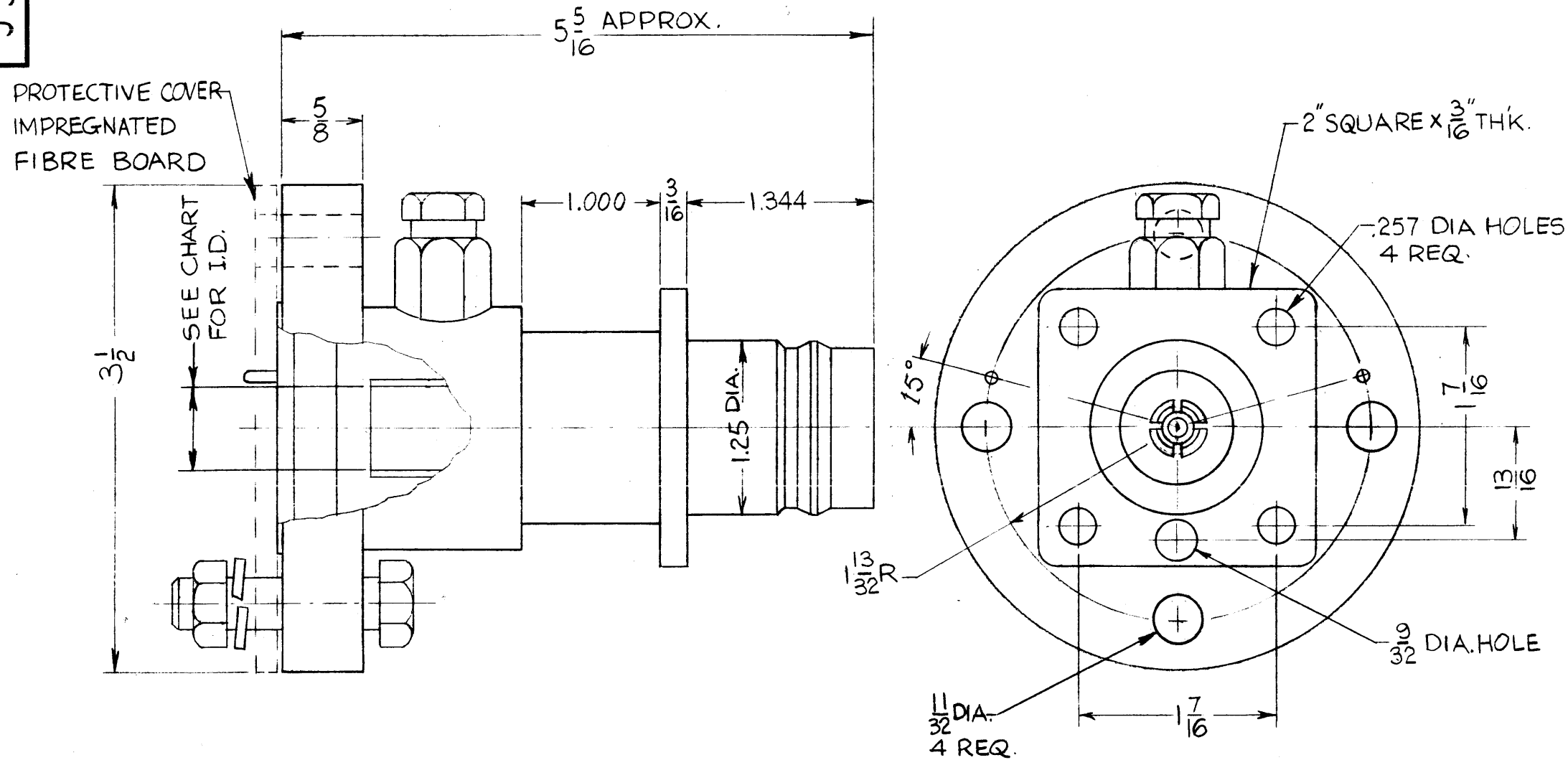
THE CONTENTS OF THIS DRAWING ARE THE EXCLUSIVE PROPERTY OF THE TECHNICAL MATERIEL CORP. ITS UNAUTHORIZED USE OR REPRODUCTION IN WHOLE OR IN PART IS STRICTLY FORBIDDEN.

TMC PART NO.	IMPEDANCE	I. D.	
JJ-246-50	50 OHMS	.588	S-401-70-(2614)
JJ-246-70	70 OHMS	.385	S-401-70-(2613)

SPECIFICATIONS
 SERIES ~ QDL
 NO. OF CONTACTS ~ ONE (1)
 TYPE OF CONTACT ~ MALE
 DIELECTRIC ~ TEFLON
ELECTRICAL DATA
 MAX. PEAK VOLTAGE ~ 10,000 V
 FREQ. LIMIT ~ 1,000 MCS.
 NOM. IMPEDANCE ~ 50Ω OR 70Ω
CABLE ACCOMODATIONS
 TYPE ~ 1 5/8 EIA

MATERIAL
 EXTERNAL PARTS ~ BRASS
 CONTACT ~ BRASS
 CONTACT FINGER - BERYLLIUM COPPER
FINISH
 EXT. PARTS ~ RHODIUM FLASH
 CONTACTS, FINGERS ~ SILVER PLATE & GOLD FLASH.

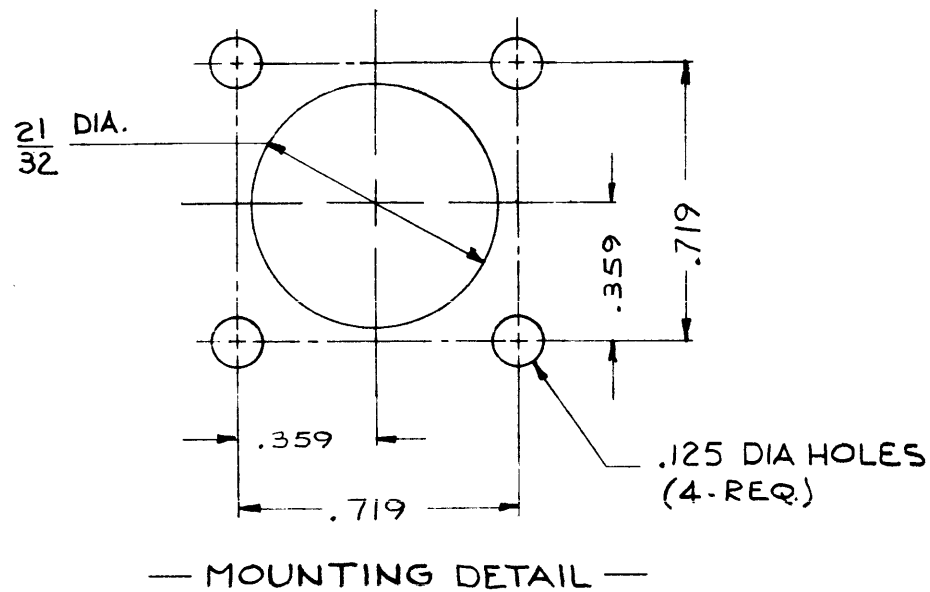
SUPPLIED BY MFR.
 O-RING - 1 REQ.
 SCREW, MACHINE - SCHH3118NR24 - 4 REQ.
 WASHER, LOCK, SPLIT - LWS31HRN - 4 REQ.
 NUT, HEX. - NTH3118NR16 - 4 REQ.
 CONNECTOR, INNER-PO-218-XX - 1 REQ.



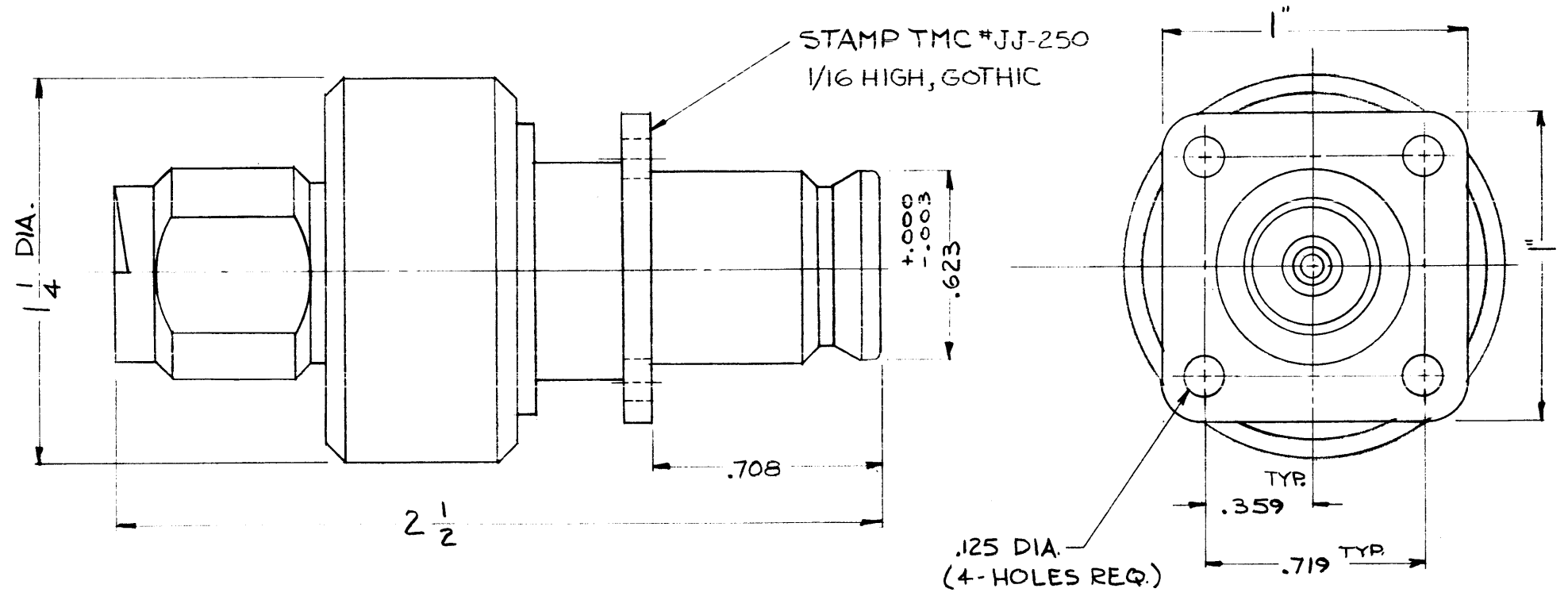
A	FIN. ON EXT. PARTS WAS BRASS	2-5-64	10834	A.M.	T.R.	W.P.
SYM	DESCRIPTION	DATE	CH. NO.	DRAFTS	CHECKER	ENG. APP.
UNLESS OTHERWISE SPECIFIED:		SCALE:				
DIMENSIONS ARE IN INCHES		MAXIMUM ALLOWABLE TOLERANCES HAVE BEEN DETERMINED AND ANY DEVIATIONS WILL BE CAUSE FOR REJECTION.				
TOLERANCES ON FRACTIONS ± 1/64 DECIMALS ± .005 ANGLES ± 1/2°		REMOVE ALL BURRS AND SHARP EDGES				

REQ. PER UNIT	MODEL	SECTION	ASSY. NO.	DATE
				4-6-62
USED ON				

REQ.	ITEM	PART NO.	PRITCHARD DESCRIPTION	SYMBOL
			THE TECHNICAL MATERIEL CORP. MAMARONECK, NEW YORK	
STOCK SIZE				
			ADAPTOR, CONNECTOR, EIA, 1 5/8 50Ω OR 70Ω	
MATERIAL				
			V.R.R. <i>HP</i>	<i>BP</i>
			DRAWN <i>HP</i>	CHECKED <i>BP</i>
			TYPE & TEMPER	HEAT TREAT. SPEC.
			SEE NOTE	
			FINISH & SPEC. NO.	
			ELEC. DES. APP.	MECH. DES. APP.
			JJ-246	A



JJ-250



SPECIFICATIONS
 SERIES ~ QDS
 NO. OF CONTACTS ~ ONE
 TYPE OF CONTACTS ~ FEMALE
 DIELECTRIC ~ TEFLON

ELECTRICAL DATA
 MAX. PEAK OPR. VOLT ~ 5000 V
 NOMINAL IMPEDANCE ~ 50 Ω

MATERIAL
 EXTERNAL PARTS ~ BRASS
 CONTACT ~ BERYLLIUM COPPER

FINISH
 EXTERNAL PARTS ~ SILVER PLATE & ROHDIUM FLASH
 CONTACTS ~ SILVER PLATE & ROHDIUM FLASH

MATING ACCOMODATIONS
 SERIES ~ QDS

NOTES

Q'TY./UNIT	MODEL USED ON	ASS'Y. NO.
		5-29-62
SCALE	CODE	S-401-70-(2603)

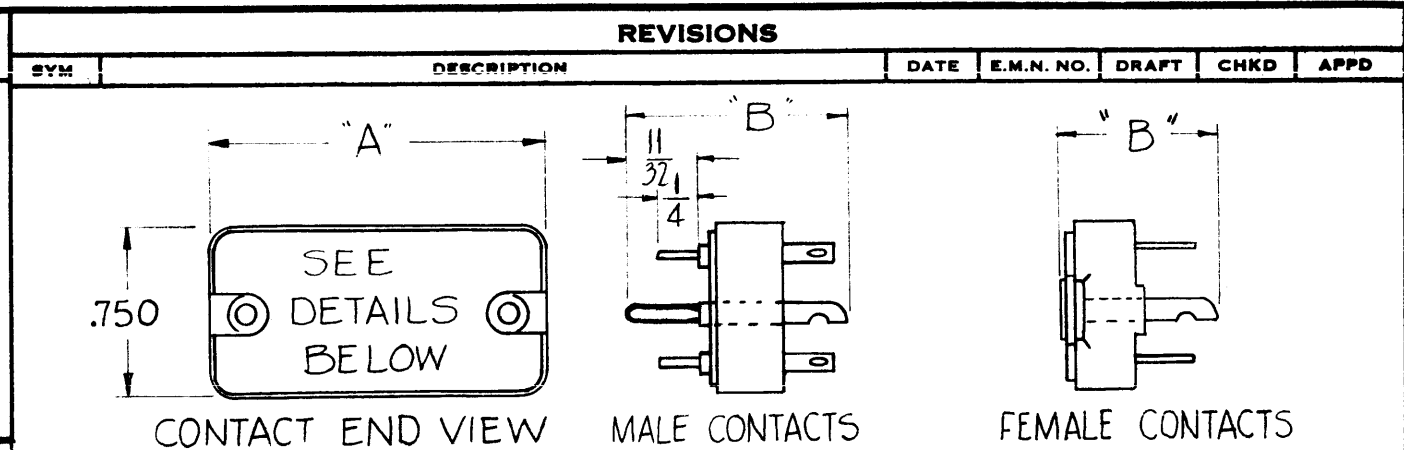
THE CONTENTS OF THIS DRAWING ARE THE EXCLUSIVE PROPERTY OF THE TECHNICAL MATERIEL CORP. ITS UNAUTHORIZED USE OR REPRODUCTION IN WHOLE OR IN PART IS STRICTLY FORBIDDEN.

REVISIONS						
SYM	DESCRIPTION	DATE	E.M.N. NO.	DRAFT	CHKD	APPD

REQ'D.	ITEM	PART NUMBER	DESCRIPTION	SYMBOL
PRITCHARD LIST OF MATERIAL				
MATERIAL			THE TECHNICAL MATERIEL CORP. MAMARONECK, NEW YORK	
SEE NOTE			TITLE	
FINISH			CONNECTOR, ADAPTER	
SEE NOTE			SERIES QDS	
UNLESS OTHERWISE SPECIFIED DIMENSIONS ARE IN INCHES AND INCLUDE CHEMICALLY APPLIED OR PLATED FINISHES			DRAWN	DATE
DECIMALS			G.S.	5-29-62
FRACTIONS			CHECKED	DATE
.X ± .05			FILE	5/29/62
.XX ± .01			ELECT. DES.	DATE
.XXX ± .005			MECH. DES.	DATE
TOLERANCES			DATE	5/29/62
± 1/64			FINAL APPROVAL	
ANGLES			JJ-250	
± 0° 30'			SHEET	
			REV. LTR.	

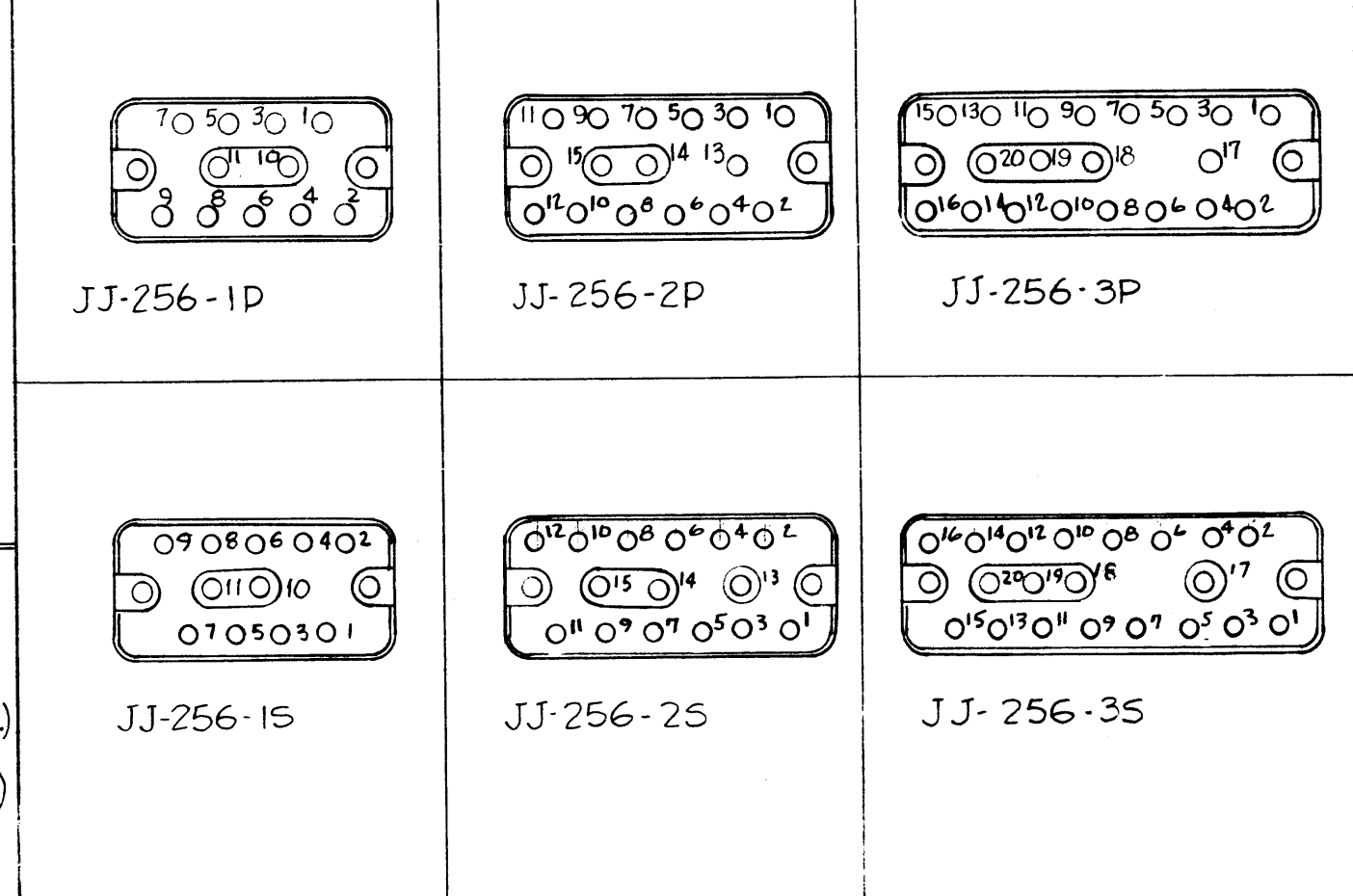
TMC PART NO	MFR. PART NO	TYPE OF CONTACT	TOTAL NO OF CONTACTS	CONTACT SIZE		VOLTAGE RATING AT SEA LEVEL	CONTACT CURRENT RATING	
				SIZE 16	SIZE 20		SIZE 16	SIZE 20
JJ-256-1P	126-804	MALE	11	2	9	900VRMS	23A	7.5A
JJ-256-1S	126-805	FEM.	11	2	9	900VRMS	23A	7.5A
JJ-256-2P	126-151	MALE	15	3	12	900VRMS	23A	7.5A
JJ-256-2S	126-150	FEM.	15	3	12	900VRMS	23A	7.5A
JJ-256-3P	126-806	MALE	20	4	16	900VRMS	23A	7.5A
JJ-256-3S	126-807	FEM.	20	4	16	900VRMS	23A	7.5A

JJ-256



DIMENSION CHART						
TMC PART NUMBER	"A" WIDTH	"B" LENGTH	MOUNTING DIMENSIONS			
			"C"	"D"	"E"	"F"
JJ-256-1P	1.171	.937	1.181	.120	.864	.120
JJ-256-1S	1.171	49/64	1.181	.120	.864	.120
JJ-256-2P	1.500	.937	1.510	.115	1.188	.145
JJ-256-2S	1.500	49/64	1.510	.115	1.188	.145
JJ-256-3P	1.937	.937	1.947	.120	1.620	.120
JJ-256-3S	1.937	49/64	1.947	.120	1.620	.120

CONTACT ARRANGEMENTS SHOWN BELOW VIEWED FROM ENGAGING END

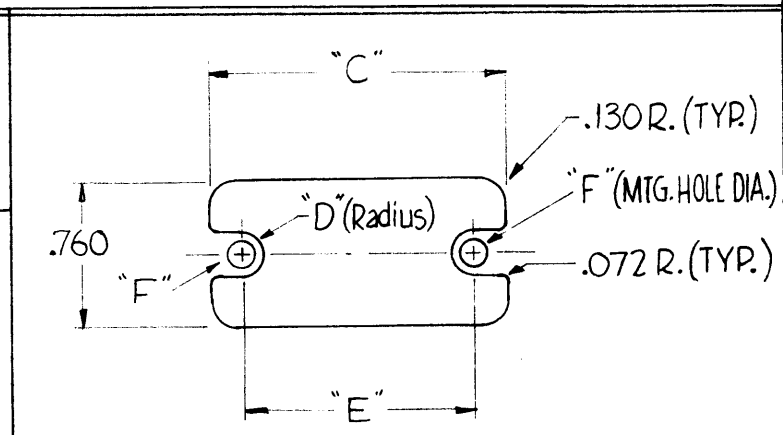


NOTE ~ MATING RECEPTACLE TMC PART NUMBER PL-228

SPECIFICATIONS

NON-LOCKING TYPE
 POLARIZED CONTACT ARRANGEMENT
 DIELECTRIC: MOLDED MICA-FILLED PHENOLIC
 CONTACTS:
 MALE: Brass, Silver Plated, Gold flashed
 FEMALE: Beryllium Copper, Silver Plated, Gold flashed.

NOTES



MOUNTING DETAIL

Q'TY./UNIT	MODEL USED ON	ASS'Y. NO.
SCALE	CODE	
Not To SCALE		

THE CONTENTS OF THIS DRAWING ARE THE EXCLUSIVE PROPERTY OF THE TECHNICAL MATERIEL CORP. ITS UNAUTHORIZED USE OR REPRODUCTION IN WHOLE OR IN PART IS STRICTLY FORBIDDEN.

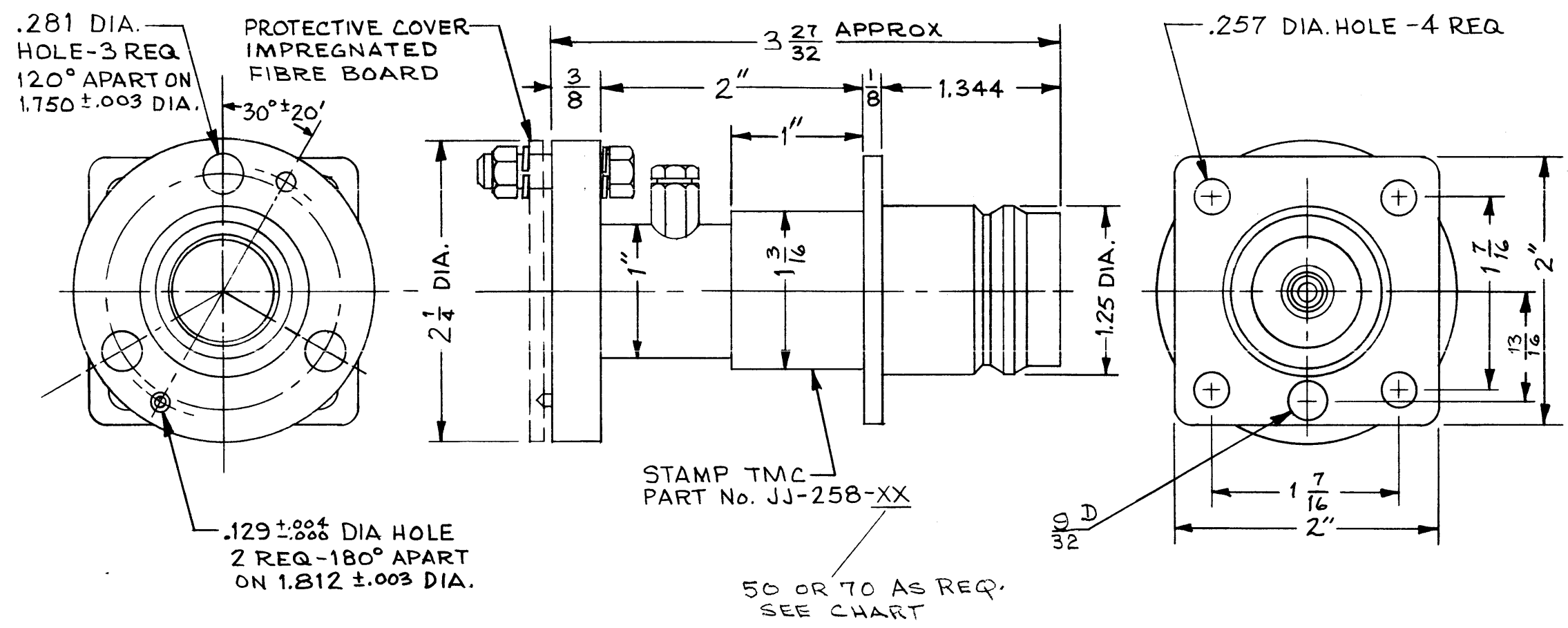
MFR. REF. ~ AMPHENOL - Series 126, See Chart for full Number

REQ'D.	ITEM	PART NUMBER	DESCRIPTION	SYMBOL
LIST OF MATERIAL				
MATERIAL			THE TECHNICAL MATERIEL CORP. MAMARONECK, NEW YORK	
See Specs				
FINISH			TITLE	
See Specs			CONNECTOR, RECEPTACLE, ELECTRICAL	
UNLESS OTHERWISE SPECIFIED DIMENSIONS ARE IN INCHES AND INCLUDE CHEMICALLY APPLIED OR PLATED FINISHES			DRAWN	DATE
			7/6/62	7/6/62
DECIMALS .X ± .05 .XX ± .01 .XXX ± .005			CHECKED	DATE
			7/16/62	7/16/62
FRACTIONS ± 1/64 ANGLES ± 0° 30'			ELCT. DES.	DATE
			7/17/62	7/17/62
TOLERANCES			MECH. DES.	DATE
			FINAL APPROVAL	DATE
			BP	
			JJ-256	
			SHEET	REV. LTR.

TMC PART No.	IMPEDANCE
JJ-258-50	50 - OHMS
JJ-258-70	70 - OHMS

JJ-258

REVISIONS						
SYM	DESCRIPTION	DATE	E.M.N. NO.	DRAFT	CHKD	APPD



SPECIFICATIONS:
 Series - QDL
 No. of Contacts - on (1)
 Type of Contact - Female
 Dielectric - T flon

ELECTRICAL DATA:
 Max. Peak Opr. Volt - 10,000
 Freq. Limit - 1,000 MCS
 Nominal Impedance - 50Ω or 70Ω

CABLE ACCOMMODATIONS:
 Type - 7/8 EIA

MATING ACCOMMODATIONS:
 Type -

MATERIAL:
 External Parts - Brass
 Contact - Beryllium Copper

FINISH:
 External Parts - Silver Plate & Rhodium Flash
 Contact - Silver Plat & Gold Flash

PANEL:
 Max. Thickness - 3/16

SUPPLIED BY MFR.

O - RING - GA-158-1	- 1 REQ.
SCREW, MACHINE - SCHH2520NR16	- 3 REQ.
LOCKWASHER, SPLIT - LWS25 HRN	- 6 REQ.
NUT, HEX. - NTH 2520NR14	- 3 REQ.
CONNECTOR, INNER - PO-287-XX	- 1 REQ.

50Ω OR 70Ω AS REQ

REQ'D.	ITEM	PART NUMBER	DESCRIPTION	SYMBOL
MARTIN ENGO LIST OF MATERIAL				
MATERIAL		THE TECHNICAL MATERIEL CORP. MAMARONECK, NEW YORK		
FINISH		TITLE ADAPTER, CONNECTOR, EIA FLANGE TO QDL - 50Ω OR 70Ω		
UNLESS OTHERWISE SPECIFIED DIMENSIONS ARE IN INCHES AND INCLUDE CHEMICALLY APPLIED OR PLATED FINISHES		DRAWN M. TANTILLO CHECKED Jule ELECT. DES. MECH. DES.	DATE 9-16-63 DATE 10/1/63 DATE 10-1-63	FINAL APPROVAL BP DATE SHEET REV. LTR.

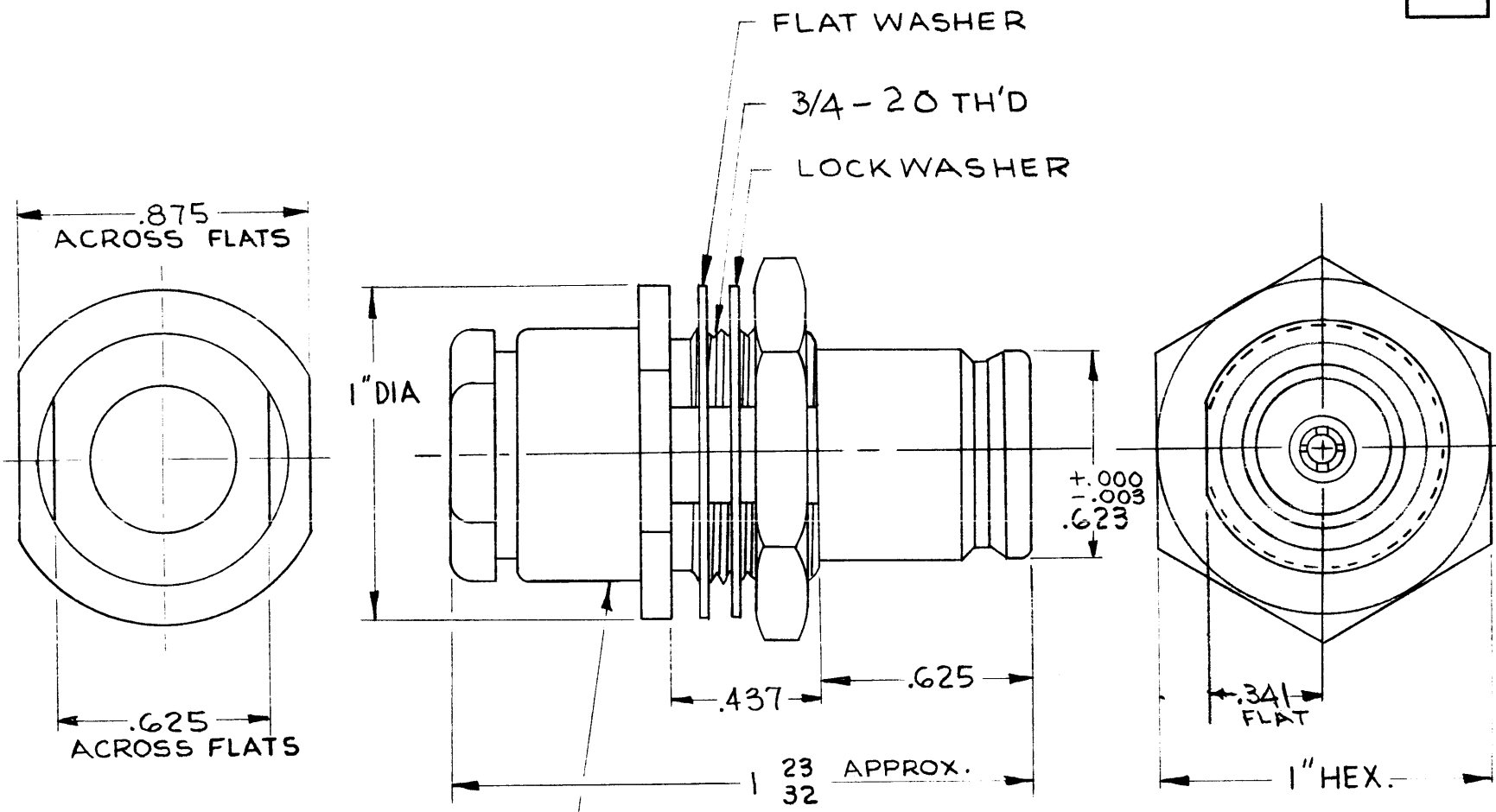
THE CONTENTS OF THIS DRAWING ARE THE EXCLUSIVE PROPERTY OF THE TECHNICAL MATERIEL CORP. ITS UNAUTHORIZED USE OR REPRODUCTION IN WHOLE OR IN PART IS STRICTLY FORBIDDEN.

NOTES

JJ-266

REVISIONS

SYM	DESCRIPTION	DATE	E.M.N. NO.	DRAFT	CHKD	APPD
-----	-------------	------	------------	-------	------	------



SPECIFICATIONS

Series - QDS
 No. of Contacts - One (1)
 Type of Contact - Female
 Dielectric - Teflon

ELECTRICAL DATA

Max. Peak Opr. Volt - 500 V.
 Frequency Limit - 10,000 MC.
 Impedance - 50 Ohms

CABLE ACCOMMODATIONS

RG-8, 9, 213, 214, 216/U

MATERIAL

External Parts - Brass
 Contact - Beryllium Copper
 Lockwasher - Phosphor Bronze
 Gasket - Silicone Rubber

FINISH

External Parts - Silver Plate and Rhodium Flash
 Contact - Silver Plate and Gold Flash

METAL STAMP TMC PART NO. JJ-266 1/8 HIGH GOTHIC

REQ'D.	ITEM	PART NUMBER	DESCRIPTION	SYMBOL
LIST OF MATERIAL				
MATERIAL		THE TECHNICAL MATERIEL CORP. MAMARONECK, NEW YORK		
FINISH		TITLE CONNECTOR, RECEPTACLE QDS TO CABLE		
UNLESS OTHERWISE SPECIFIED DIMENSIONS ARE IN INCHES AND INCLUDE CHEMICALLY APPLIED OR PLATED FINISHES		DRAWN <i>DRM</i>	DATE 4-17-63	FINAL APPROVAL <i>BP</i>
		CHECKED <i>HQ</i>	DATE 4-17-63	
		ELECT. DES.	DATE	JJ-266
		MECH. DES. <i>DRM</i>	DATE 4/17/63	SHEET
				REV. LTR.

Q'TY./UNIT	MODEL USED ON	ASS'Y. NO.
SCALE 2X1	CODE	S401-70 (2939)
THE CONTENTS OF THIS DRAWING ARE THE EXCLUSIVE PROPERTY OF THE TECHNICAL MATERIEL CORP. ITS UNAUTHORIZED USE OR REPRODUCTION IN WHOLE OR IN PART IS STRICTLY FORBIDDEN.		

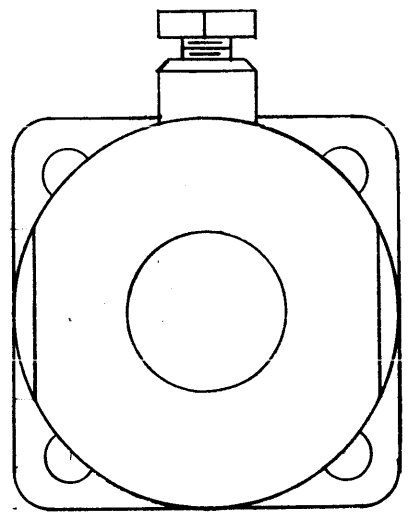
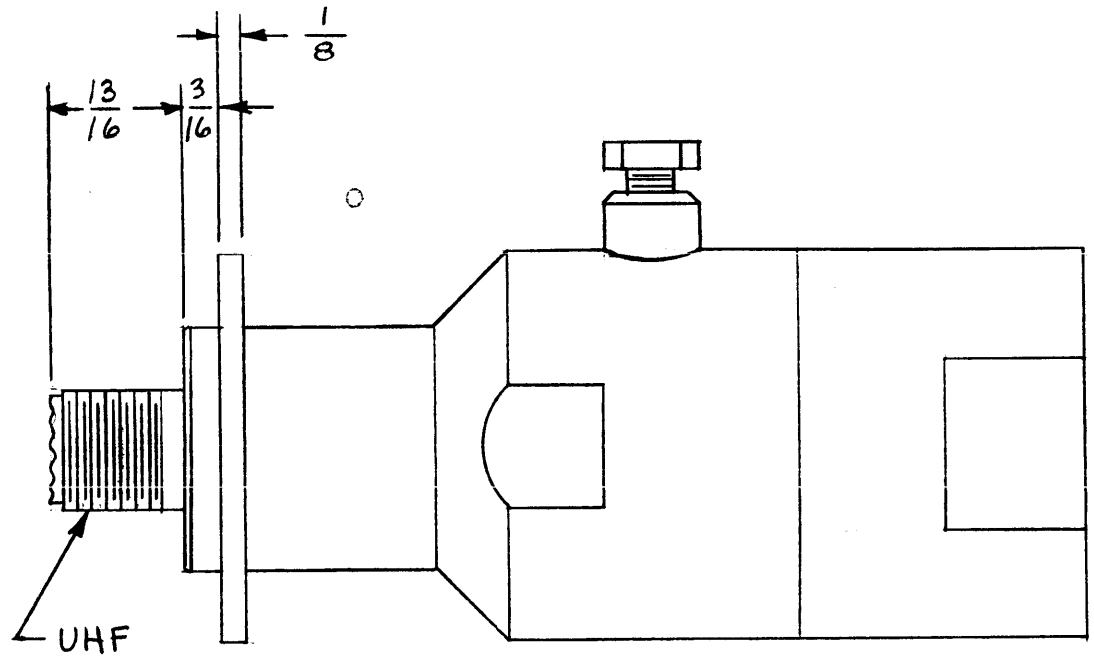
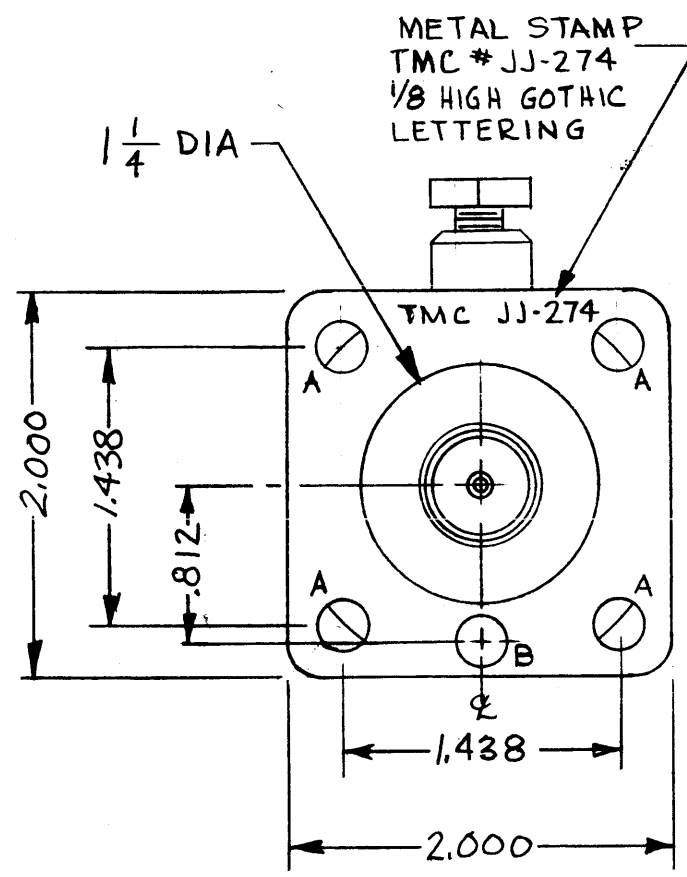
NOTES

SPECIFICATIONS
 SERIES - UHF
 No. OF CONTACTS - ONE (1)
 TYPE OF CONTACT - FEMALE
 DIELECTRIC - **TEFLON**
ELECTRICAL DATA
 MAX. PEAK OPR. VOLTS -
 NOMINAL IMPEDANCE - 50Ω

CABLE ACCOMODATION
 TYPE - 7/8 HELIAX
 MAX. O.D. -
MATERIAL
 EXT. PARTS - BRASS
 CONTACTS -
FINISH
 EXT. PARTS -
 CONTACTS -

JJ-274

REVISIONS						
SYM	DESCRIPTION	DATE	E.M.N. NO.	DRAFT	CHKD	APPD
Ø	ORIGINAL RELEASE FOR TROD	8/25/69				



HOLE DIA
 A - .257 DIA 4 REQ.
 B - 9/32 (.281) DIA 1 REQ.

NOTES

JPP-HX5875C7X4		
Q'TY./UNIT	MODEL USED ON	ASS'Y. NO.
SCALE	CODE	
	S401-31 (750 MODIFIED)	

THE CONTENTS OF THIS DRAWING ARE THE EXCLUSIVE PROPERTY OF THE TECHNICAL MATERIEL CORP. ITS UNAUTHORIZED USE OR REPRODUCTION IN WHOLE OR IN PART IS STRICTLY FORBIDDEN.

REQ'D.	ITEM	PART NUMBER	DESCRIPTION	SYMBOL
MARTINEU GO LIST OF MATERIAL				
MATERIAL		THE TECHNICAL MATERIEL CORP. MAMARONECK, NEW YORK		
FINISH		TITLE CONNECTOR, RECEPTACLE 7/8 HELIAX TO UHF		
UNLESS OTHERWISE SPECIFIED DIMENSIONS ARE IN INCHES AND INCLUDE CHEMICALLY APPLIED OR PLATED FINISHES		DRAWN MJ TANTILLO	DATE 12-17-62	FINAL APPROVAL <i>[Signature]</i>
		CHECKED <i>[Signature]</i>	DATE 12-17-62	DATE 8/25/69
DECIMALS .X ± .05 .XX ± .01 .XXX ± .005		FRACTIONS ± 1/64 ANGLES ± 0° 30'		TOLERANCES
		ELECT. DES.	DATE 12/17/62	JJ-274
		MECH. DES. <i>[Signature]</i>	DATE	REV. LTR.

PART NUMBER	MFR. PART NUMBER	NO. OF CONTACTS	DIMENSIONS				
			A	B	C	D	E
JJ-285-6	CD-606S (FG)	6	1.785	1.531	1.239	1.097	0.781

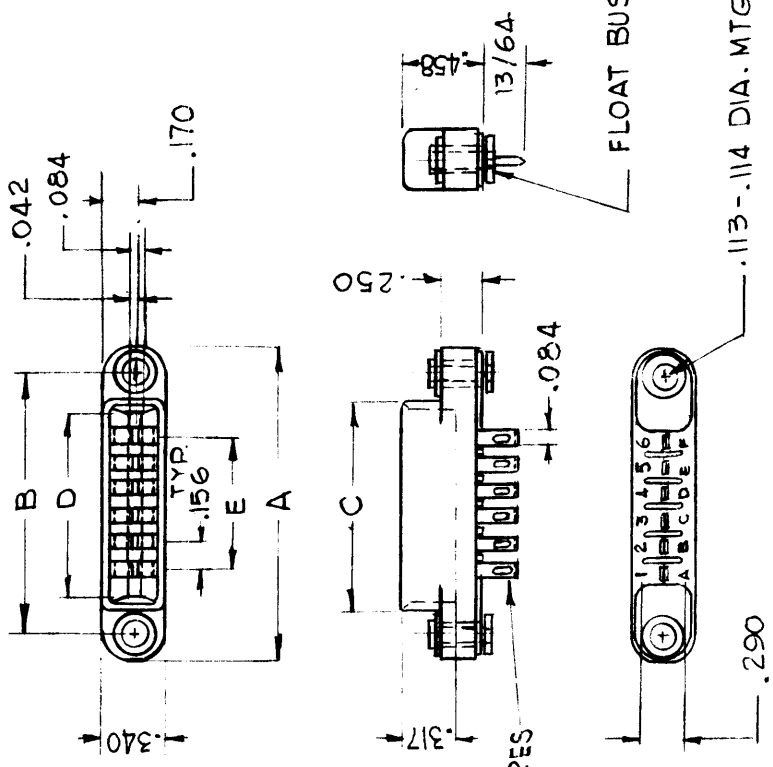
SYM	DESCRIPTION	REVISIONS				
		DATE	E.M.N. NO.	DRAFT	CHKD	APPD

JJ-285

SPECIFICATIONS

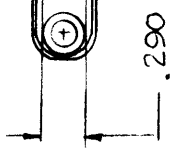
- CONTACTS: A) TYPE - FEMALE, FLAT, SOLID FACE
 B) CURRENT RATING - 5 AMP CONTINUOUS
 C) VOLT. RATING - 600 VAC RMS
 D) MATERIAL & FINISH - BERYLLIUM COPPER, GOLD PLATED
- DIELECTRIC: GLASS FILLED DIALLYL PHTHALATE; COLOR, GREEN
- FLOAT BUSHING: STAINLESS STEEL, PASSIVATED (ALLOWS 1/64 LATERAL MOVEMENT IN ANY DIRECTION)
- SHELL: NONE
- POLARIZATION: NONE
- LOCKING FEATURES: NONE

MATING CONNECTOR: TMC NO. JJ-286



FLOAT BUSHING (SEE SPEC. 3)

ACCEPTS 3#20 WIRES



.113-.114 DIA. MTG HOLE

.290

REQ'D.	ITEM	PART NUMBER	DESCRIPTION	SYMBOL
	KOHN		LIST OF MATERIAL	
			THE TECHNICAL MATERIEL CORP. MAMARONECK, NEW YORK	
			TITLE	
			CONNECTOR, RECEPTACLE, FEMALE	
			DRAWN G.D.L	DATE 5-23-63
			CHECKED	DATE 5/24/63
			ELECT. DES. KOHN	DATE 5/28/63
			MECH. DES. W. JORDAN	DATE 5/27/63
			FINAL APPROVAL	DATE
				REV. LTR.

4	TTR-10	AX-418
QTY./UNIT	MODEL USED ON	ASSY. NO.
SCALE	CODE	S401-241

THE CONTENTS OF THIS DRAWING ARE THE EXCLUSIVE PROPERTY OF THE TECHNICAL MATERIEL CORP. ITS UNAUTHORIZED USE OR REPRODUCTION IN WHOLE OR IN PART IS STRICTLY FORBIDDEN.

NOTES

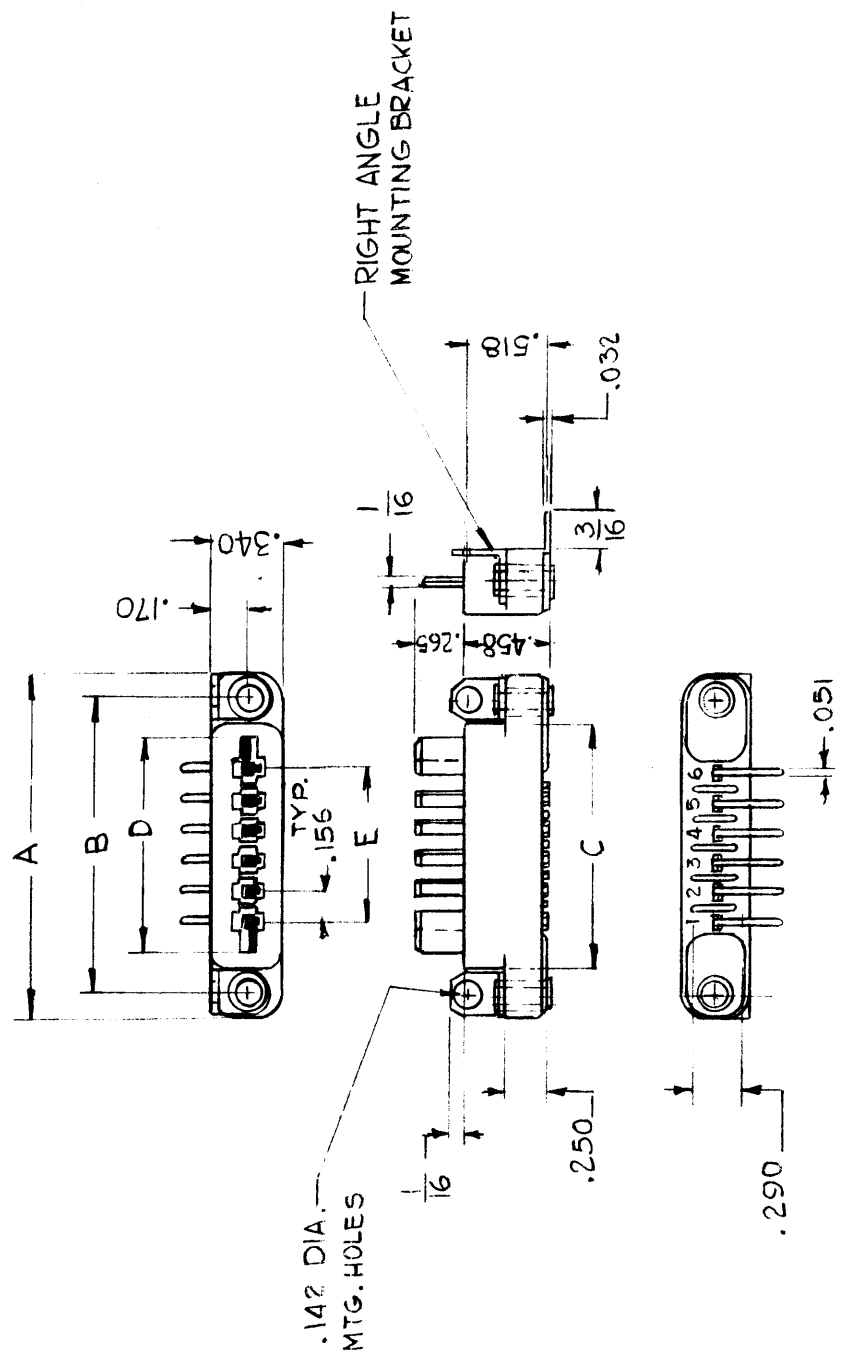
SYM	DESCRIPTION	REVISIONS			
		DATE	E.M.N. NO.	DRAFT	CHKD
JJ-286					

TMC PART NUMBER	MFR. PART NUMBER	NO. OF CONTACTS	DIMENSIONS				
			A	B	C	D	E
JJ-286-6	MDR-606B	6	1.785	1.531	1.239	1.088	0.781

SPECIFICATIONS

- CONTACTS: A) TYPE: MALE, FLAT, SOLID
B) CURRENT RATING: 5 AMP CONTINUOUS
C) VOLT. RATING: 600 VAC RMS
D) MATERIAL & FINISH: BERYLLIUM COPPER, GOLD PLATED
- DIELECTRIC: GLASS FILLED DIALLYL PHTHALATE; COLOR, GREEN
- MOUNTING BRACKETS: STEEL, CADMIUM PLATE
- SHELL: NONE
- POLARIZATION: NONE
- LOCKING FEATURE: NONE

MATING CONNECTOR: TMC NO. JJ-285



REQ'D.	ITEM	PART NUMBER	DESCRIPTION	SYMBOL
	KOHIN		LIST OF MATERIAL	
			THE TECHNICAL MATERIEL CORP. MAMARONECK, NEW YORK	
			CONNECTOR, RECEPTACLE, MALE	
			DRAWN G.D.L.	DATE 5-23-63
			CHECKED	DATE 5/24/63
			ELECT. DESK R. KOHN	DATE 5/28/63
			MCH. DES. W. JOHNSON	DATE 5/27/63
				SHEET
				REV. LTR.

Q'TY./UNIT	MODEL USED ON	ASSY. NO.
4	TTR-10	5401-241

THE CONTENTS OF THIS DRAWING ARE THE EXCLUSIVE PROPERTY OF THE TECHNICAL MATERIEL CORP. ITS UNAUTHORIZED USE OR REPRODUCTION IN WHOLE OR IN PART IS STRICTLY FORBIDDEN.

NOTES

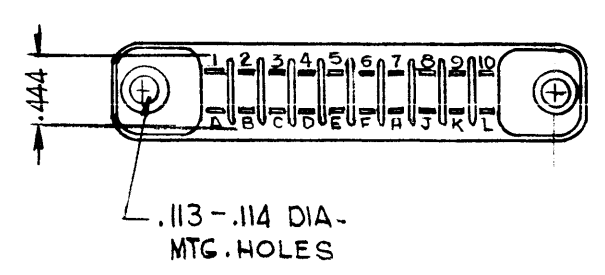
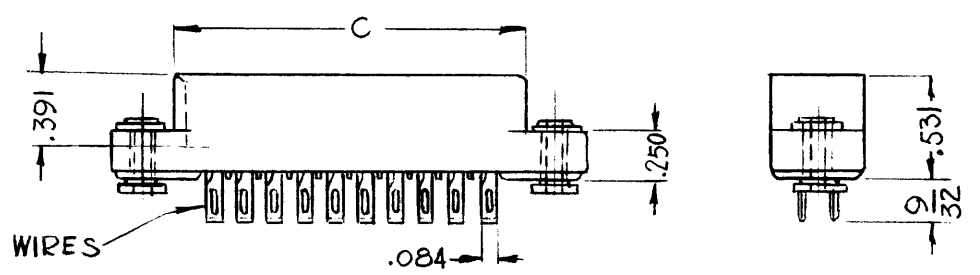
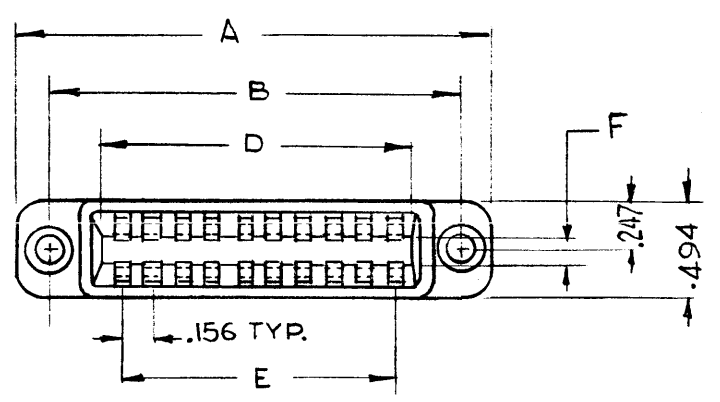
TMC PART NUMBER	MFR. PART NUMBER	NO. OF CONTACTS	DIMENSIONS						FOR BOARD THICKNESS
			A	B	C	D	E	F	
JJ-287-20	84-7020-2100	20	2.410	2.156	1.864	1.723	1.404	.108	3/32

JJ-287

REVISIONS					
SYM	DESCRIPTION	DATE	E.M.N. NO.	DRAFT	CHKD. APPD.
A	MFR P/N WAS FD-720-35 (FG)	5/18/70	—	ELA	JR

SPECIFICATIONS

- CONTACTS: A) TYPE: FEMALE, FLAT, SOLID FACE
 B) CURRENT RATING: 5 AMP CONTINUOUS
 C) VOLT. RATING: 600 VAC RMS
 D) MATERIAL & FINISH: BERYLLIUM COPPER, GOLD PLATED
- DIELECTRIC: GLASS FILLED DIALLYL PHTHALATE; COLOR, GREEN
- FLOAT BUSHINGS: STAINLESS STEEL, PASSIVATED (ALLOWS 1/64 LATERAL MOVEMENT IN ANY DIRECTION)
- SHELL: NONE
- POLARIZATION: NONE
- LOCKING FEATURE: NONE



REQ'D.	ITEM	PART NUMBER	DESCRIPTION	SYMBOL
KOHN LIST OF MATERIAL				
MATERIAL		THE TECHNICAL MATERIEL CORP. MAMARONECK, NEW YORK		
FINISH		TITLE CONNECTOR, RECEPTACLE, FEMALE PRINTED CIRCUIT BOARD		
UNLESS OTHERWISE SPECIFIED DIMENSIONS ARE IN INCHES AND INCLUDE CHEMICALLY APPLIED OR PLATED FINISHES		DRAWN G.D.L.	DATE 5-23-63	FINAL APPROVAL <i>BP</i>
DECIMALS .X ± .05 .XX ± .01 .XXX ± .05		CHECKED <i>J.D.</i>	DATE 5/24/63	DATE
FRACTIONS ± 1/64 AN LES ± 0° 30'		ELECT. DES. RIKOH	DATE 5/28/63	DATE
TOLERANCES		MECH. DES. W. JORDAN	DATE 5/27/63	DATE
THE CONTENTS OF THIS DRAWING ARE THE EXCLUSIVE PROPERTY OF THE TECHNICAL MATERIEL CORP. ITS UNAUTHORIZED USE OR REPRODUCTION IN WHOLE OR IN PART IS STRICTLY FORBIDDEN.			JJ-287	
SCALE			SHEET	
CODE			REV. LTR.	

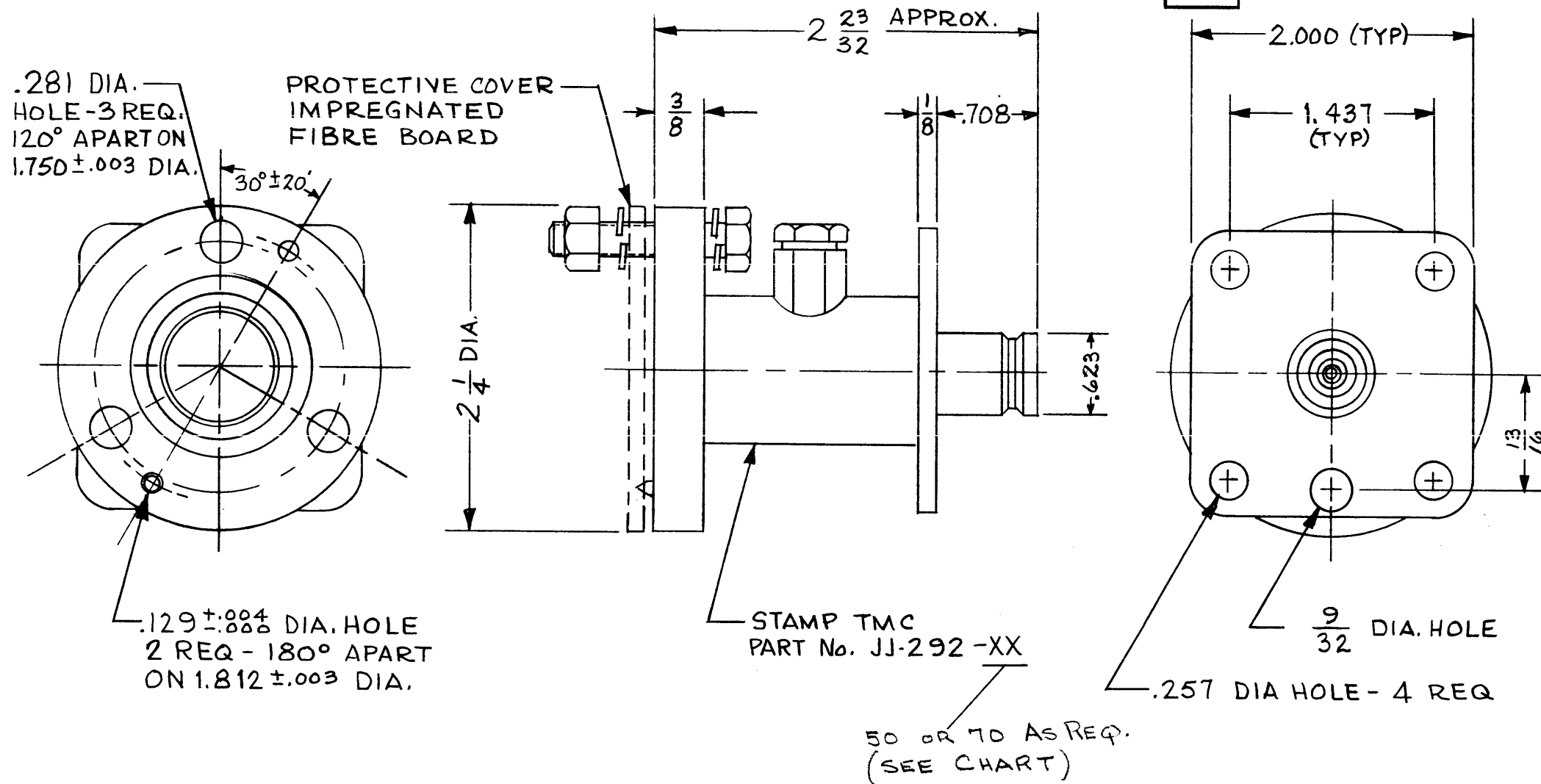
8	TTR-10	CA-833
Q'TY./UNIT	MODEL USED ON	ASS'Y. NO.
SCALE	CODE	5401-241

NOTES

TMC PART No.	IMPEDANCE
JJ-292-50	50 - OHMS
JJ-292-70	70 - OHMS

REVISIONS						
SYM	DESCRIPTION	DATE	E.M.N. NO.	DRAFT	CHKD	APPD

JJ-292



SPECIFICATIONS:
 Series - QDS
 No. of Contacts - One (1)
 Type of Contact - Female
 Dielectric - Teflon

ELECTRICAL DATA:
 Max. Peak Opr. Volt - 5 KV
 Freq. Limit - 10,000 MCS
 Nominal Imp danc - 50Ω or 70Ω

CABLE ACCOMMODATIONS:
 Type - 7/8 EIA

MATING ACCOMMODATIONS
 Type - None

MATERIAL:
 External Parts - Brass
 Contact - Beryllium Copper

FINISH:
 External Parts - Silver Plate & Rhodium Flash
 Contact - Silver Plat & Gold Flash

PANEL:
 Max. Thickness - 3/16

- SUPPLIED BY MFR.**
- O-RING-GA-158-1 - 1 REQ
 - SCREW, MACHINE-SCHH2520NR16 - 3 REQ
 - LOCK WASHER, SPLIT-LWS25HRN - 6 REQ
 - NUT, HEX-NTH2520NR14 - 3 REQ
 - CONNECTOR, INNER PO-287-XX - 1 REQ
- 50Ω OR 70Ω AS REQ

NOTES

QTY./UNIT	MODEL USED ON	ASS'Y. NO.
SCALE	CODE	S401-70-2960-(50) S401-70-2961-(70)

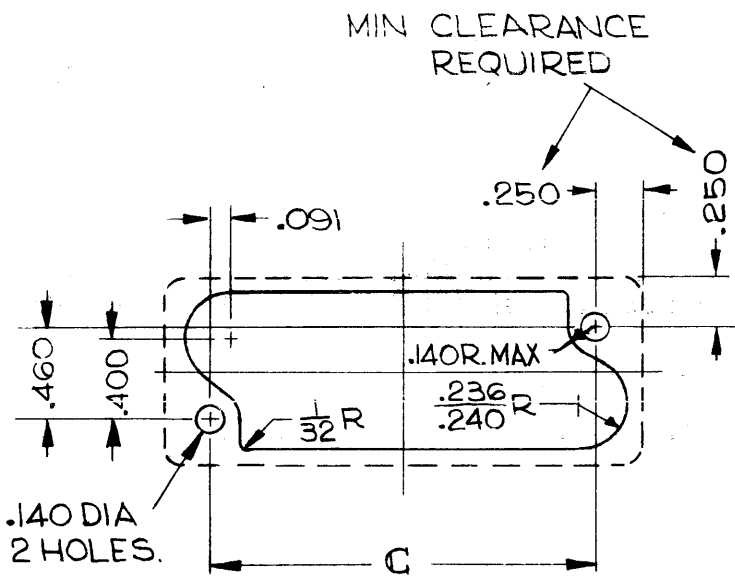
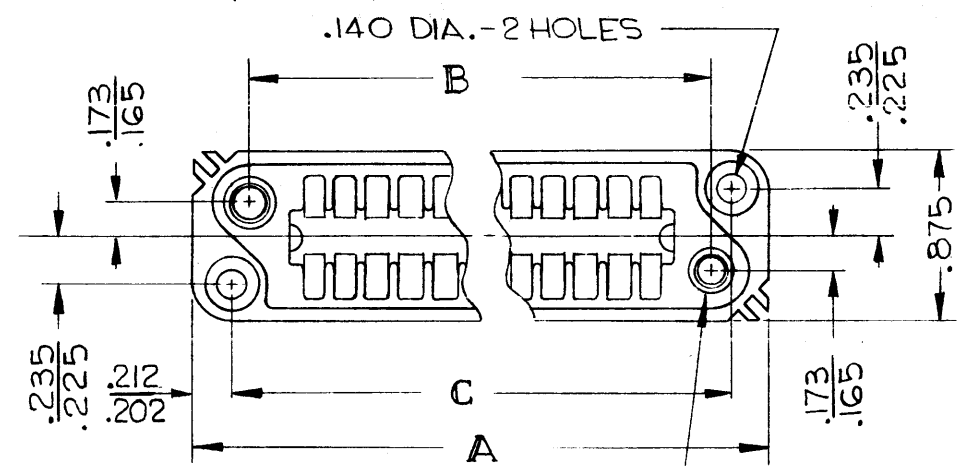
THE CONTENTS OF THIS DRAWING ARE THE EXCLUSIVE PROPERTY OF THE TECHNICAL MATERIEL CORP. ITS UNAUTHORIZED USE OR REPRODUCTION IN WHOLE OR IN PART IS STRICTLY FORBIDDEN.

REQ'D.	ITEM	PART NUMBER	DESCRIPTION	SYMBOL
MARTIN ENGO LIST OF MATERIAL				
MATERIAL		THE TECHNICAL MATERIEL CORP. MAMARONECK, NEW YORK		
FINISH		TITLE ADAPTER, CONNECTOR, EIA FLANGE TO QDS-50Ω OR 70Ω		
UNLESS OTHERWISE SPECIFIED DIMENSIONS ARE IN INCHES AND INCLUDE CHEMICALLY APPLIED OR PLATED FINISHES		DRAWN M. TANTILLO	DATE 9-18-63	FINAL APPROVAL <i>[Signature]</i>
DECIMALS .X ± .05 .XX ± .01 .XXX ± .005		FRACTIONS ± 1/64 ANGLES ± 0° 30'		DATE 10-1-63
TOLERANCES		ELECT. DES. <i>[Signature]</i>	DATE 10-1-63	REV. LTR.
		MECH. DES. <i>[Signature]</i>	DATE 10-1-63	SHEET
		JJ-292		

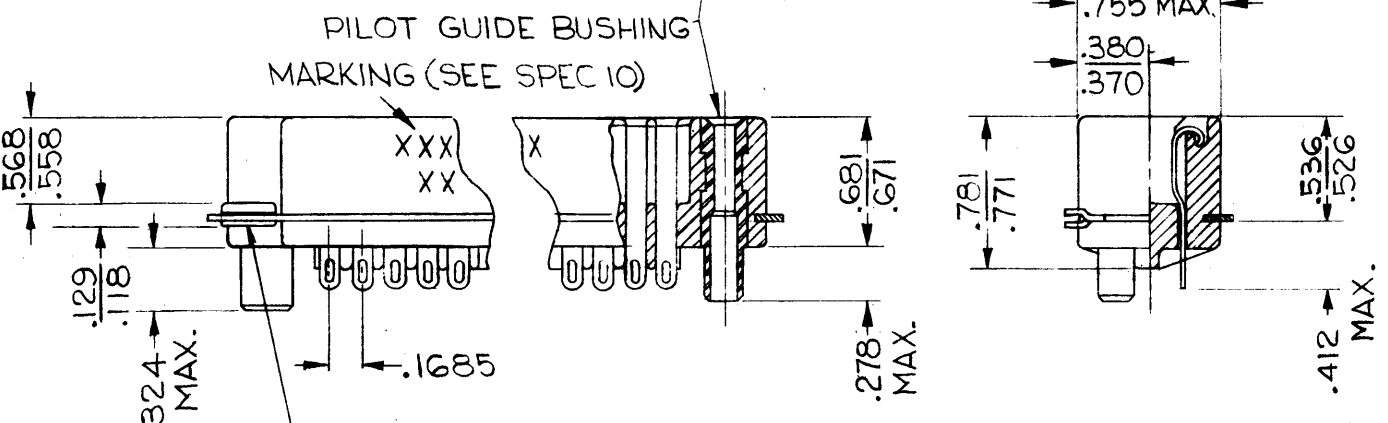
JJ-295

THE CONTENTS OF THIS DRAWING ARE THE EXCLUSIVE PROPERTY OF THE TECHNICAL MATERIEL CORP. ITS UNAUTHORIZED USE OR REPRODUCTION IN WHOLE OR IN PART IS STRICTLY FORBIDDEN.

TMC PART NO.	NO. OF CONTACTS	DIMENSIONS		
		A	B	C
JJ-295-1	24	3-1/8	2.522	2.704



RECOMMENDED MOUNTING LAYOUT (VIEWED FROM CONNECTING END OF CONNECTOR)



SPECIFICATIONS

- NUMBER OF CONTACTS: SEE CHART
- MATING ENDS: 1
- CONTACT DATA:
 - ALL CONTACTS IDENTICAL
 - POLARITY: FEMALE
 - STYLE: FLAT
 - CURRENT RATING: 5 AMPS
 - DCV: 750 V
 - ACV: NOT RATED
 - MATERIAL: PHOSPHOR BRONZE
 - FINISH: GOLD PLATE
- DIELECTRIC: DIALYL PHTHALATE (BLUE)
- POLARIZATION:
 - GUIDE PINS (LARGE AND SMALL)
- LOCKING FEATURES: NONE
- CABLE ACCOMMODATIONS: TERMINALS ACCEPT SIZE 16 STRANDED WIRE
- MOUNTING PLATE:
 - CONSTRUCTION: MOULDED INTO DIEL. BODY.
 - MATERIAL: STAINLESS STEEL
 - FINISH: PASSIVATED
- MATING CONNECTOR: TMC NO. JJ-296
- MARKING: STAMP WITH TMC PART NO.

SYM	DESCRIPTION	DATE	CH. NO.	DRAFTS	CHECKER	ENG. APP.
A	NOTE 10 WAS SIDE OF CONN BODY SHALL BE STAMPED WHT FILL W/ TMC P/N	12.12.66	17445	WHD	JCS	[Signature]

UNLESS OTHERWISE SPECIFIED:
 DIMENSIONS ARE IN INCHES
 TOLERANCES ON FRACTIONS ± 1/64 DECIMALS ± .005 ANGLES ± 1/2°

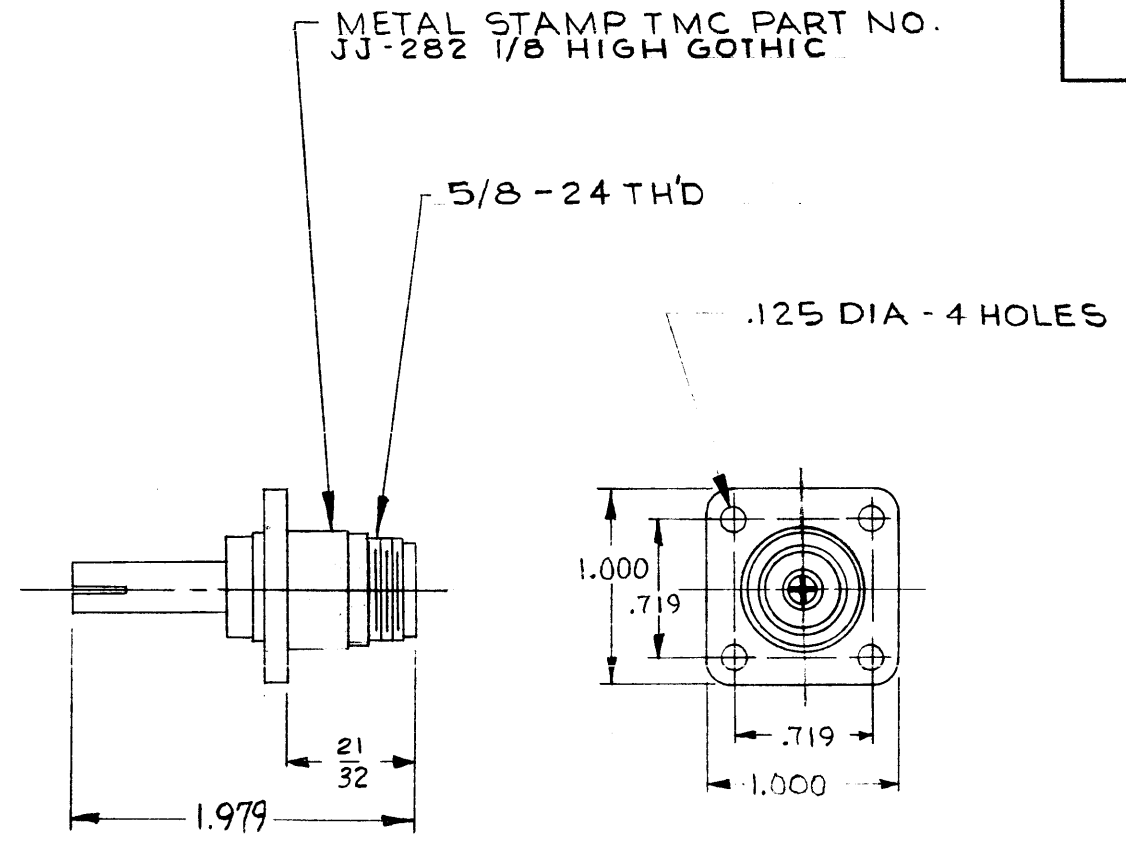
SCALE: 5401-71 (26-190)
 MAXIMUM ALLOWABLE TOLERANCES HAVE BEEN DETERMINED AND ANY DEVIATIONS WILL BE CAUSE FOR REJECTION. REMOVE ALL BURRS AND SHARP EDGES

REQ. PER UNIT	MODEL	SECTION	ASS'Y. NO.	DATE
1	TTR-10		CA-789	6-11-63

REQ. ITEM	PART NO.	DESCRIPTION	SYMBOL
		THE TECHNICAL MATERIEL CORP. MAMARONECK, NEW YORK	
	SEE SPEC # 8 B	CONNECTOR, RECEPTACLE, FEMALE	
		RIBBON TYPE, FLOAT MOUNTED	
		TYPE & TEMPER	
		HEAT TREAT. SPEC.	
		FINISH & SPEC. NO.	
		DRAWN	
		CHECKED	
		ELEC. DES. APP.	
		MECH. DES. APP.	
		FINAL APPROVAL	
		JJ-295	A

REVISIONS					
SYM	DESCRIPTION	DATE	E.M.N. NO.	DRAFT	CHKD APPD

JJ-282



SPECIFICATIONS

Series - N
 No. of Contacts - One (1)
 Type of Contact - Female
 Dielectric - Teflon

ELECTRICAL DATA

Max. Peak Opr. Volt - 1500 V.
 Nominal Impedance - 50 Ohms

MATING ACCOMMODATIONS

TCA 85/N Only

MATERIAL

External Parts - Brass
 Contact - Beryllium Copper

FINISH

External Parts - Silver Plate and Rhodium Flash
 Contact - Silver Plate and Gold Flash

REQ'D.	ITEM	PART NUMBER	DESCRIPTION	SYMBOL
MARTENGO LIST OF MATERIAL				
MATERIAL		THE TECHNICAL MATERIEL CORP. MAMARONECK, NEW YORK		
FINISH		TITLE CONNECTOR, RECEPTACLE for TCA-85/N		
UNLESS OTHERWISE SPECIFIED DIMENSIONS ARE IN INCHES AND INCLUDE CHEMICALLY APPLIED OR PLATED FINISHES		DRAWN <i>DDW</i>	DATE 4-17-63	FINAL APPROVAL <i>BP</i>
		CHECKED <i>JCC</i>	DATE 4-17-63	
		ELECT. DES. <i>JCC</i>	DATE	JJ-282
		MECH. DES. <i>ATK</i>	DATE 3/17/63	
			SHEET	REV. LTR.

Q'TY./UNIT	MODEL USED ON	ASS'Y. NO.
SCALE <i>H</i>	CODE	S401-70 (2937)

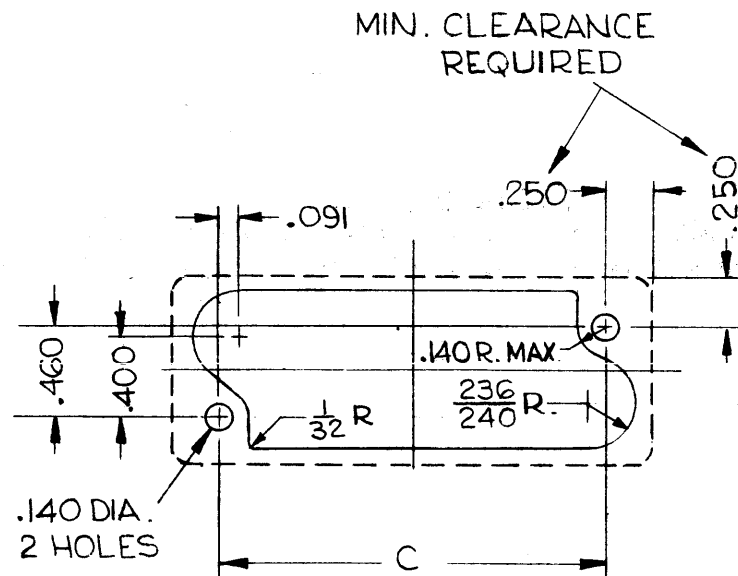
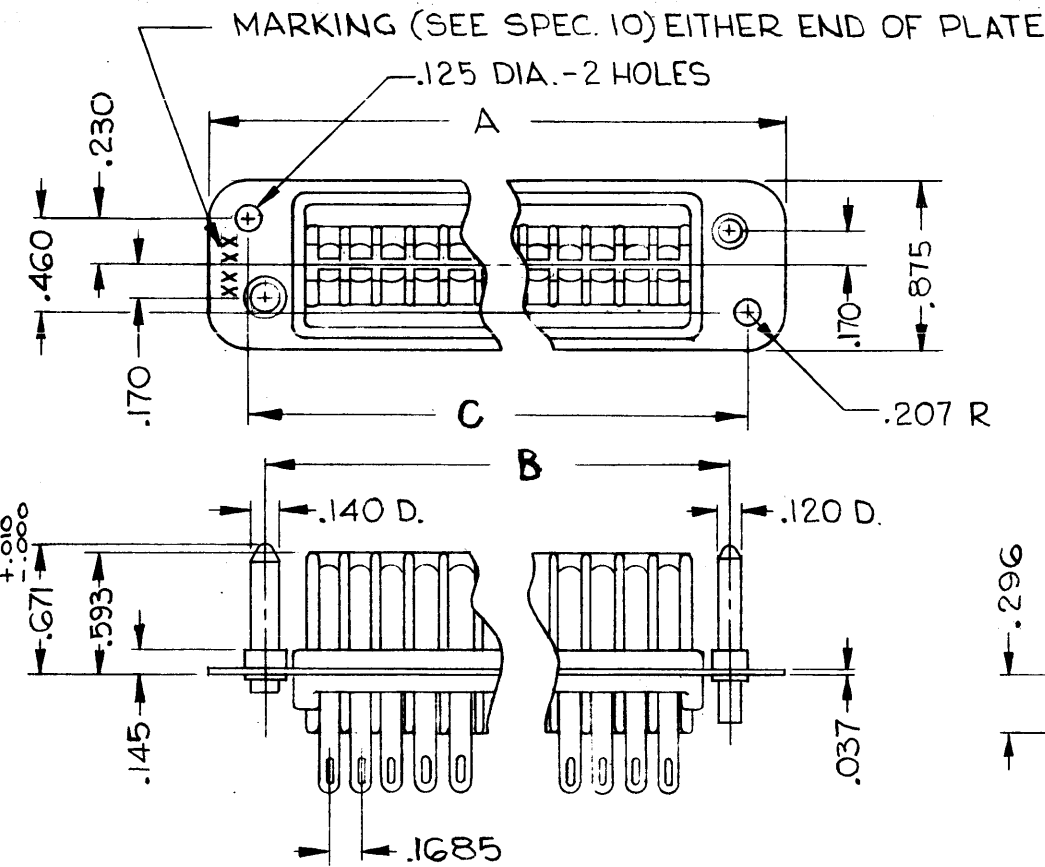
THE CONTENTS OF THIS DRAWING ARE THE EXCLUSIVE PROPERTY OF THE TECHNICAL MATERIEL CORP. ITS UNAUTHORIZED USE OR REPRODUCTION IN WHOLE OR IN PART IS STRICTLY FORBIDDEN.

NOTES

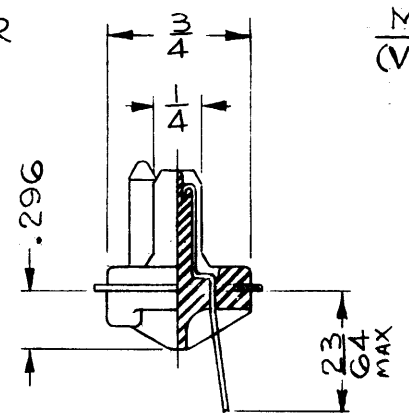
THE CONTENTS OF THIS DRAWING ARE THE EXCLUSIVE PROPERTY OF THE TECHNICAL MATERIEL CORP. ITS UNAUTHORIZED USE OR REPRODUCTION IN WHOLE OR IN PART IS STRICTLY FORBIDDEN.

JJ-296

TMC PART NO.	NO. OF CONTACTS	DIMENSIONS		
		A	B	C
JJ-296-1	24	3-1/8	2.522	2.704



RECOMMENDED MOUNTING LAYOUT (VIEWED FROM WIRING END OF CONNECTOR)



SPECIFICATIONS

1. NUMBER OF CONTACTS: SEE CHART
2. MATING ENDS: 1
3. CONTACT DATA:
 - A. ALL CONTACTS IDENTICAL
 - B. POLARITY: MALE
 - C. STYLE: FLAT
 - D. CURRENT RATING: 5 AMPS,
 - E. DCV: 750 V
 - F. ACV: NOT RATED
 - G. MATERIAL: BRASS
 - H. FINISH: GOLD PLATE
4. DIELECTRIC: DIALYL PHTHALATE (BLUE)
5. POLARIZATION: TYPE: GUIDE PINS (LARGE AND SMALL)
6. LOCKING FEATURES: NONE
7. CABLE ACCOMMODATIONS: TERMINALS ACCEPT SIZE 16 STRANDED WIRE
8. MOUNTING PLATE:
 - A. CONSTRUCTION: MOULDED INTO DIEL. BODY.
 - B. MATERIAL: STAINLESS STEEL
 - C. FINISH: PASSIVATED
9. MATING CONNECTOR: TMC NO. JJ-295
10. MARKING: MOUNTING PLATE SHALL BE MARKED WITH TMC PART NO. JJ-296

SYM	DESCRIPTION	DATE	CH. NO.	DRAFTS	CHECKER	ENG. APP.
	UNLESS OTHERWISE SPECIFIED:	SCALE: S401-71(26-159)				
	DIMENSIONS ARE IN INCHES	MAXIMUM ALLOWABLE TOLERANCES HAVE BEEN DETERMINED AND ANY DEVIATIONS WILL BE CAUSE FOR REJECTION. REMOVE ALL BURRS AND SHARP EDGES				
	TOLERANCES ON FRACTIONS ± 1/64 DECIMALS ± .005 ANGLES ± 1/2°					

REQ. PER UNIT	MODEL	SECTION	ASS'Y. NO.	DATE
1	TTR-10		CA-833	7-10-63

REQ.	ITEM	PART NO.	DESCRIPTION	SYMBOL										
			THE TECHNICAL MATERIEL CORP. MAMARONECK, NEW YORK											
		SEE SPEC * 8 B	CONNECTOR, RECEPTACLE, MALE, RIBBON TYPE, FLOAT MOUNTED											
			<table border="1"> <tr> <td>TYPE & TEMPER</td> <td>HEAT TREAT. SPEC.</td> <td>DRAWN</td> <td>CHECKED</td> <td>FINAL APPROVAL</td> </tr> <tr> <td>SEE SPEC * 8 C</td> <td></td> <td>7-10-63</td> <td>7-10-63</td> <td>JJ-296</td> </tr> </table>	TYPE & TEMPER	HEAT TREAT. SPEC.	DRAWN	CHECKED	FINAL APPROVAL	SEE SPEC * 8 C		7-10-63	7-10-63	JJ-296	
TYPE & TEMPER	HEAT TREAT. SPEC.	DRAWN	CHECKED	FINAL APPROVAL										
SEE SPEC * 8 C		7-10-63	7-10-63	JJ-296										
			ELEC. DES. APP. MECH. DES. APP.											