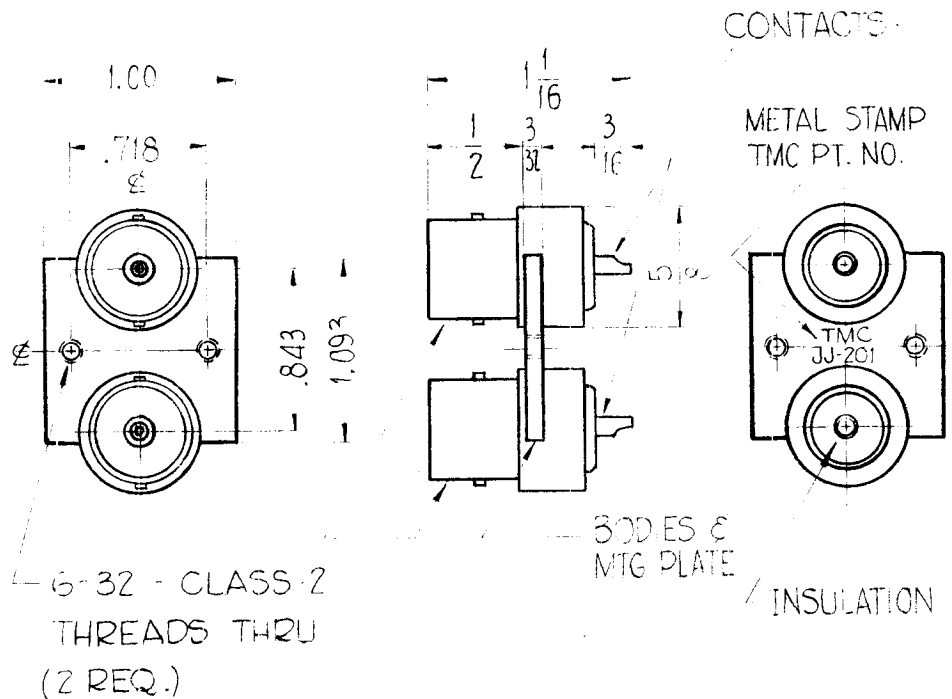


REQ. PER UNIT	USED ON			JJ-201
	MODEL	ASS'Y. NO.	DATE	
	SW-282		4-10-61	

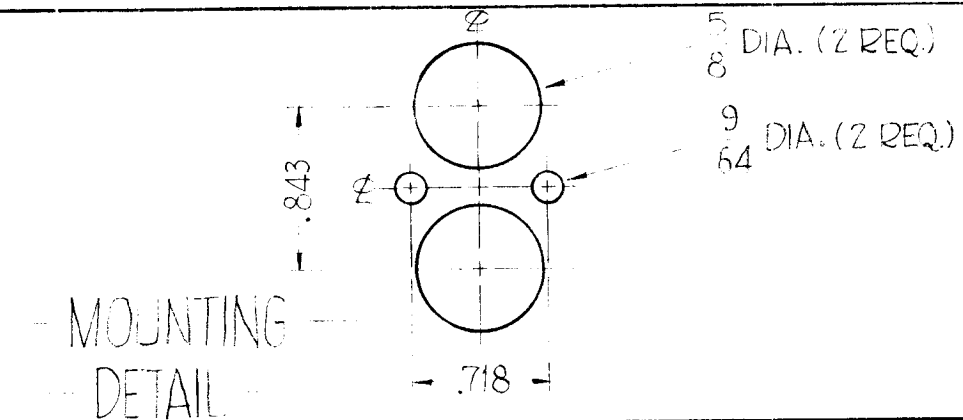


SPECIFICATIONS

BODIES AND MTG. PLATE -
MATERIAL - BRASS, FINISH - SILVER PLATED AND RHODIUM FLASHED.

CONTACTS -
MATERIAL - BERYLIUM COPPER, FINISH - GOLD FLASHED

INSULATION -
MATERIAL - TEFLON, TYPE - LOW LOSS PLASTIC, DIELECTRIC



ELECTRICAL DATA

MAXIMUM PEAK VOLTAGE

NOMINAL IMPEDENCE

MOUNTING

SEE DETAIL

REQ.	ITEM	PART NO.	DESCRIPTION	SYMBOL					
			THE TECHNICAL MATERIEL CORP. MAMARONECK, NEW YORK						
			CONNECTOR, RECEPTACLE, DUAL "TYPE C"						
			STOCK SIZE						
			MATERIAL						
ISSUE	ITEM	CHANGED FROM	DATE	CH. NO.	DRAFTS	CHECKER	ENG. APP.		
TOLERANCES			SCALE: DO NOT SCALE (5401-70 (1045))						
DEC. DIM. ±			MAXIMUM ALLOWABLE TOLERANCES HAVE BEEN DETERMINED AND ANY DEVIATIONS WILL BE CAUSE FOR REJECTION. REMOVE ALL BURRS AND SHARP EDGES						
FRAC. DIM. ± 1/64									
ANGULAR DIM. ±									
TYPE & TEMPER		HEAT TREAT. SPEC.		DRAWN		CHECKED		FINAL APPROVAL	
FINISH & SPEC. NO.		ELEC. DES. APP.		MECH. DES. APP.		JJ-201			

REQ. PER UNIT

USED ON

MODEL

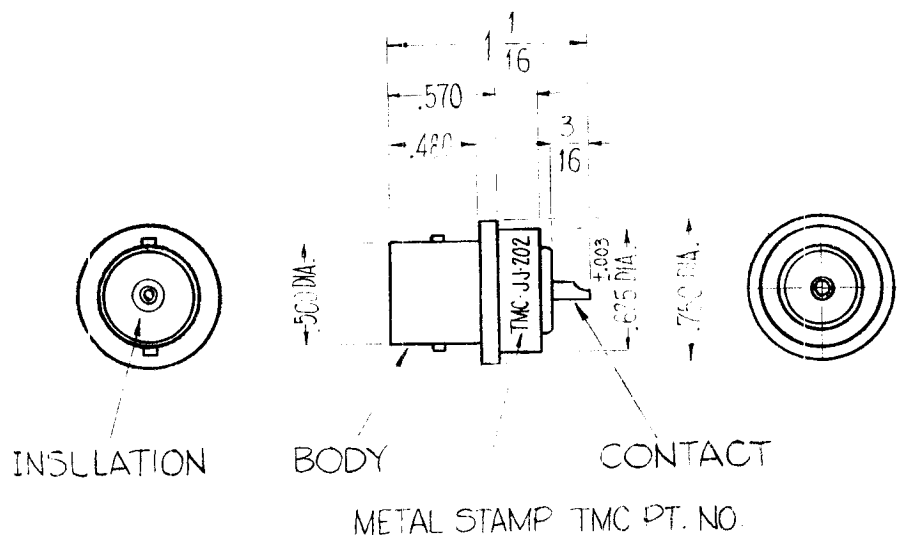
ASS'Y. NO.

DATE

SW-284

4-8-61

JJ-202



SPECIFICATIONS

BODY

MATERIAL - BRASS, FINISH - SILVER PLATED AND RHODIUM FLASHED.

CONTACT

MATERIAL - BERYLIUM COPPER, FINISH - GOLD FLASHED

INSULATION

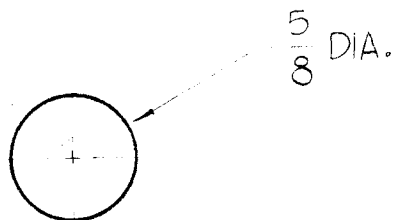
MATERIAL - TEFLON, TYPE - LOW LOSS PLASTIC, DIELECTRIC

ELECTRICAL DATA

MAXIMUM PEAK VOLTAGE
NOMINAL IMPEDANCE

MOUNTING

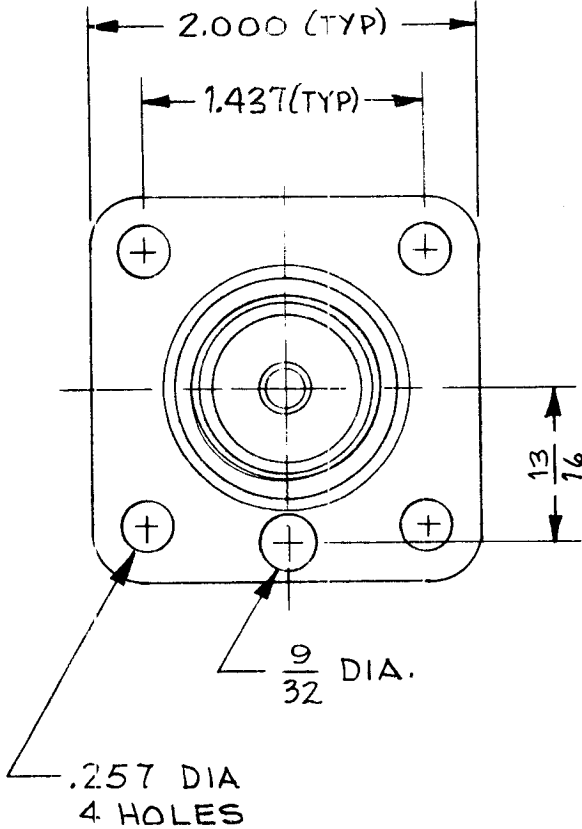
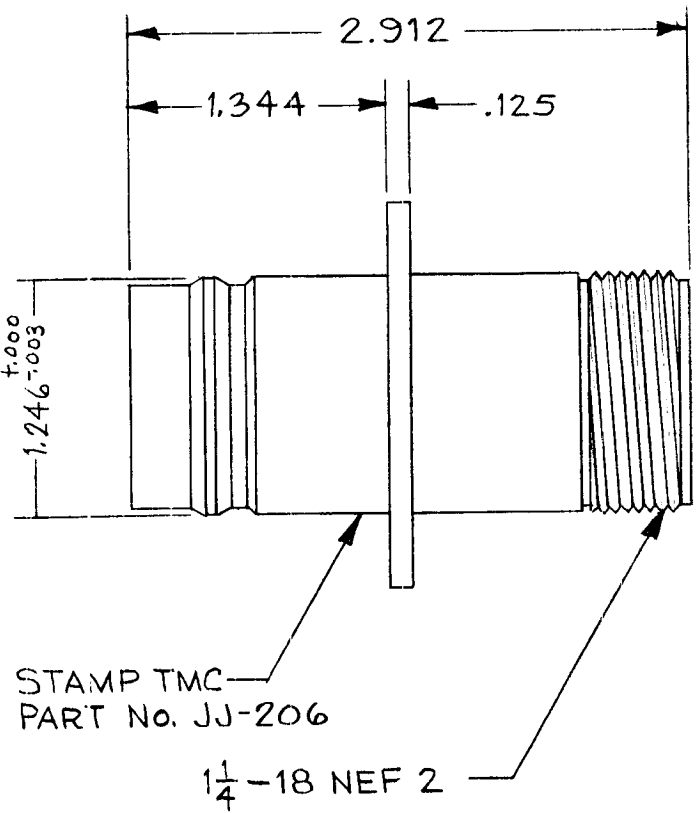
SEE DETAIL
NOTE - USE ONLY FOR SW-284



MOUNTING DETAIL

							REQ.	ITEM	PART NO.	DESCRIPTION	SYMBOL			
										THE TECHNICAL MATERIEL CORP.				
										MAMARONECK, NEW YORK				
							STOCK SIZE			CONNECTOR, RECEPTACLE				
										"TYPE C"				
							MATERIAL			John C. Biele				
ISSUE	ITEM	CHANGED FROM	DATE	CH. NO.	DRAFTS	CHECKER	ENG. APP.							
TOLERANCES			SCALE DO NOT SCALE 5401-70 (1048)						DRAWN		CHECKED			
DEC. DIM. ±			MAXIMUM ALLOWABLE TOLERANCES HAVE BEEN DETERMINED AND ANY DEVIATIONS WILL BE CAUSE FOR REJECTION. REMOVE ALL BURRS AND SHARP EDGES				TYPE & TEMPER		HEAT TREAT. SPEC.		FINAL APPROVAL			
FRAC. DIM. ± 1/64													JJ-202	
ANGULAR DIM. ±											FINISH & SPEC. NO.		ELEC. DES. APP MECH. DES. APP	

REQ. PER UNIT	USED ON			JJ-206
	MODEL	ASS'Y. NO.	DATE	



STAMP TMC
PART No. JJ-206

1/4-18 NEF 2

.257 DIA
4 HOLES

SPECIFICATIONS:
 Series - QDL
 No. of Contacts - ONE (1)
 Type of Contact - FEMALE
 Dielectric - TEFLON

ELECTRICAL DATA:
 Max. Peak Opr. Volt - 10,000V
 Freq. Limit - 1000 MCS
 Nominal Impedance - 50 OHMS

CABLE ACCOMMODATIONS:
 Type - NONE

MATING ACCOMMODATIONS:
 Type - LC

MATERIAL:
 External Parts - BRASS
 Contact - BERYLLIUM COPPER
 Gasket - NONE

FINISH:
 External Parts - RHODIUM
 Contact GOLD

PANEL:
 Max. Thickness 3/16

SYM	DESCRIPTION	DATE	CH. NO.	DRAFTS	CHECKER	ENG. APP.	REQ. ITEM	PART NO.	MARTINENGO DESCRIPTION	SYMBOL
									THE TECHNICAL MATERIEL CORP. MAMARONECK. NEW YORK	
								STOCK SIZE	CONNECTOR, RECEPTALE	
								MATERIAL	QDL TO LC/10KV SERIES	
									M TANTILLO 9-19-63	
								TYPE & TEMPER	CHECKED	BP
								HEAT TREAT. SPEC.		
									DRAWN	
									MECH. DES. APP.	JJ-206
								FINISH & SPEC. NO.	ELEC. DES. APP.	

UNLESS OTHERWISE SPECIFIED
 DIMENSIONS ARE IN INCHES AND INCLUDE
 CHEMICALLY APPLIED OR PLATED FINISHES

DECIMALS .X ± .05
 .XX ± .01
 .XXX ± .005

FRACTIONS ± 1/64
 ANGLES ± 0° 30'

TOLERANCES

SCALE

CODE S401-70-2171

THE CONTENTS OF THIS DRAWING ARE THE EXCLUSIVE PROPERTY OF THE TECHNICAL MATERIEL CORP. ITS UNAUTHORIZED USE OR REPRODUCTION IN WHOLE OR IN PART IS STRICTLY FORBIDDEN.

REQ. PER UNIT

USED ON

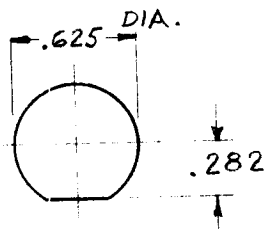
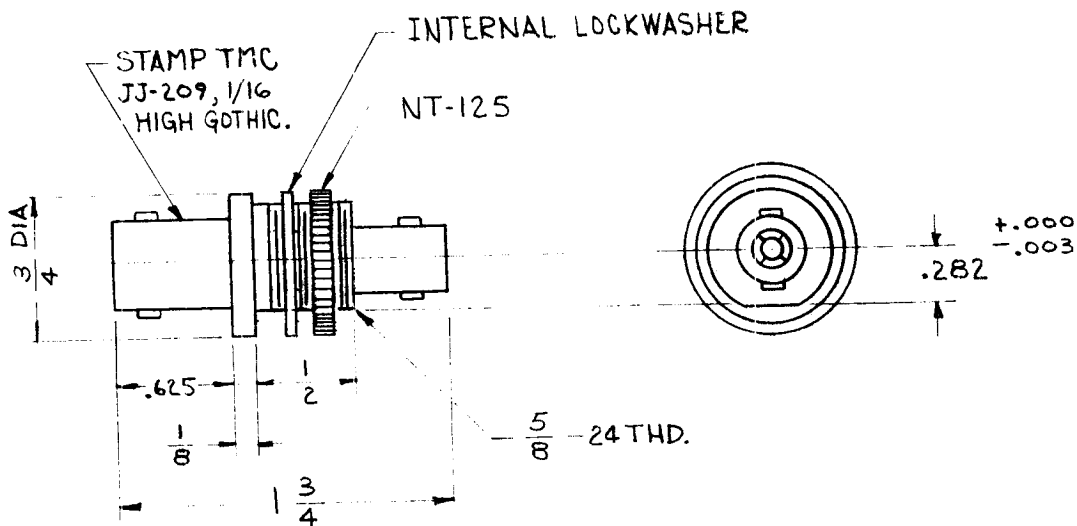
MODEL

ASS'Y. NO.

DATE

9-6-62

JJ-209



MOUNTING DETAIL

SPECIFICATIONS:

Series - BNC
 No. of Contacts - One (1)
 Type of Contact - Female
 Dielectric - Teflon

ELECTRICAL DATA:

Max. Peak Opr. Volt -
 Freq. Limit -
 Nominal Impedance -

MATING ACCOMMODATIONS:

Type -

MATERIAL:

External Parts - Brass
 Contact - Beryllium Copper
 Gasket - None

FINISH:

External Parts - Silver Plate and Rhodium Flash
 Contact - Silver Plate and Gold Flash

							REQ.	ITEM	PART NO.	A. MARTINENGO	DESCRIPTION	SYMBOL	
							STOCK SIZE			THE TECHNICAL MATERIEL CORP. MAMARONECK, NEW YORK			
							MATERIAL			RECEPTACLE, CONNECTOR			
										"C" TO "BNC" SERIES			
SYM	DESCRIPTION	DATE	CH. NO.	DRAFTS	CHECKER	ENG. APP.							
UNLESS OTHERWISE SPECIFIED: DIMENSIONS ARE IN INCHES TOLERANCES ON FRAC. ± 1/64 DEC. ± .005 ANGLES ± 1/2°		SCALE: 5401-70-2274					TYPE & TEMPER		HEATTREAT. SPEC.	DRAWN	CHECKED	FINAL APPROVAL	
MAXIMUM ALLOWABLE TOLERANCES HAVE BEEN DETERMINED AND ANY DEVIATIONS WILL BE CAUSE FOR REJECTION. REMOVE ALL BURRS AND SHARP EDGES												JJ-209	
							FINISH & SPEC. NO.		ELEC. DES. APP.	MECH. DES. APP.			

THE CONTENTS OF THIS DRAWING ARE THE EXCLUSIVE PROPERTY OF THE TECHNICAL MATERIEL CORP. ITS UNAUTHORIZED USE OR REPRODUCTION IN WHOLE OR IN PART IS STRICTLY FORBIDDEN.

REQ. PER UNIT

MODEL

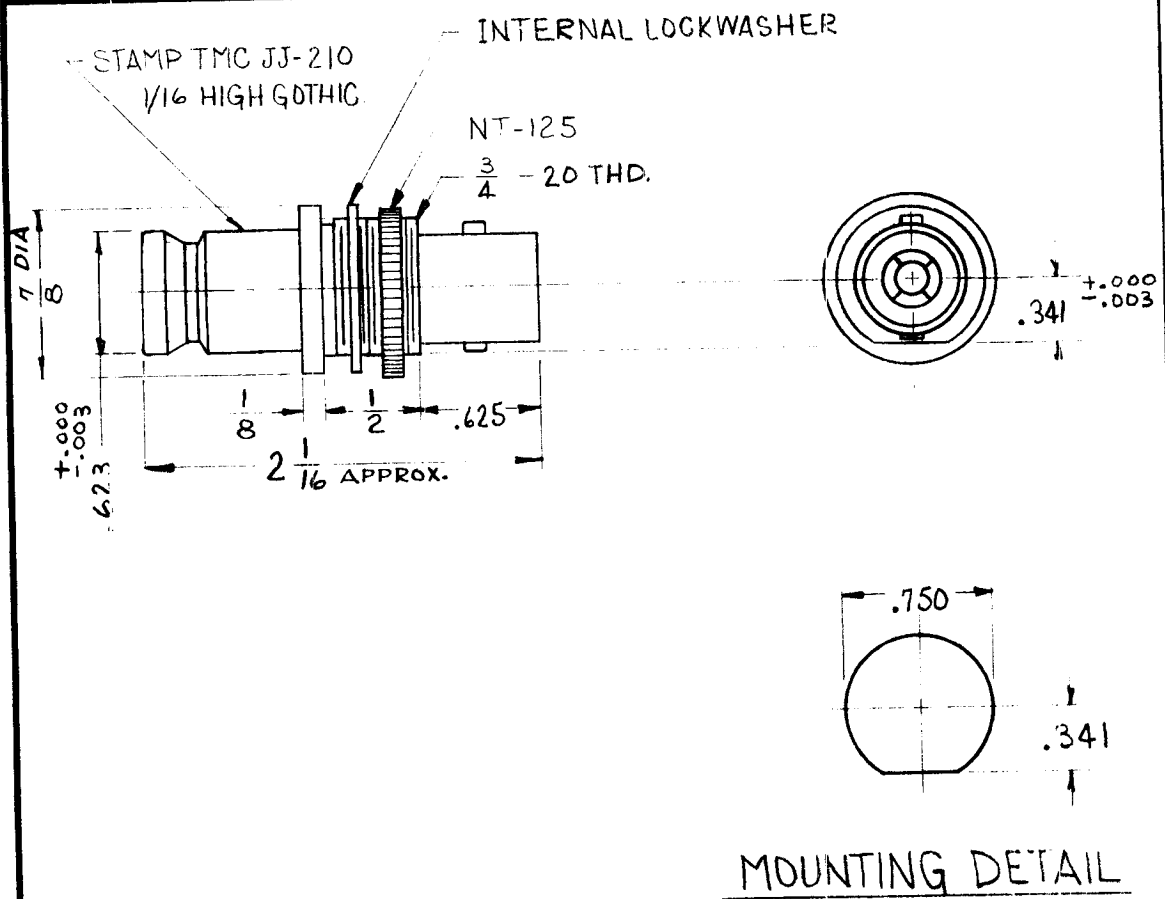
USED ON

ASS'Y. NO.

DATE

9-6-62

JJ-210



SPECIFICATIONS:
 Series - QDS
 No. of Contacts - One (1)
 Type of Contact - Female
 Dielectric - Teflon

ELECTRICAL DATA:
 Max. Peak Opr. Volt -
 Freq. Limit -
 Nominal Impedance -

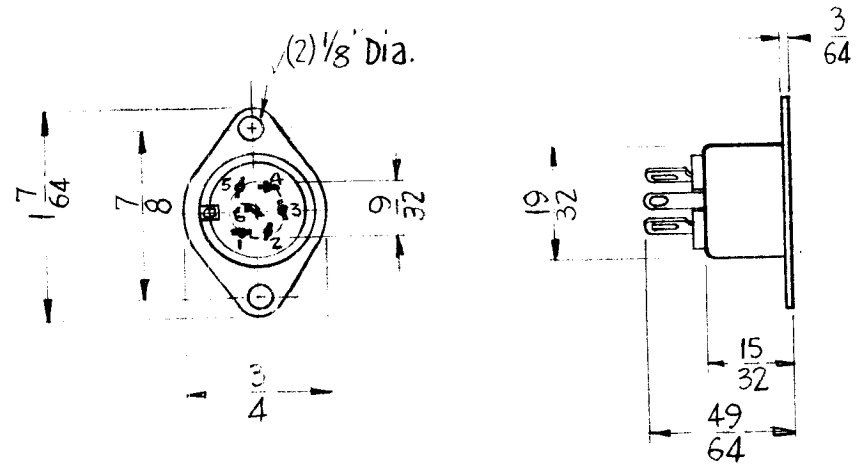
MATING ACCOMMODATIONS:
 Type -

MATERIAL:
 External Parts - Brass
 Contact - Beryllium Copper
 Gasket - None

FINISH:
 External Parts - Silver Plate and Rhodium Flash
 Contact - Silver Plate and Gold Flash

SYM	DESCRIPTION	DATE	CH. NO.	DRAFTS	CHECKER	ENG. APP.	REQ.	ITEM	PART NO.	A. MARTINENGO DESCRIPTION	SYMBOL	
										THE TECHNICAL MATERIEL CORP. MAMARONECK, NEW YORK		
										RECEPTACLE, CONNECTOR		
										"QDS" TO "C" SERIES		
UNLESS OTHERWISE SPECIFIED: DIMENSIONS ARE IN INCHES TOLERANCES ON FRAC. ± 1/64 DEC. ± .005 ANGLES ± 1/2°		SCALE: S401-70-2273					TYPE & TEMPER		HEAT TREAT. SPEC.		DRAWN G. Sorenson 9-6-62	
MAXIMUM ALLOWABLE TOLERANCES HAVE BEEN DETERMINED AND ANY DEVIATIONS WILL BE CAUSE FOR REJECTION. REMOVE ALL BURRS AND SHARP EDGES		MECH. DES. APP. 10/1/62		FINAL APPROVAL BP		FINISH & SPEC. NO.		ELEC. DES. APP.		JJ-210		

REQ. PER. UNIT	USED ON			JJ-212	△
	MODEL	ASS'Y. NO.	DATE		
1	GPE-1		6-19-61		



Ref. ~ Hirschman # Mab-6

							REQ.	ITEM	PART NO.	DESCRIPTION	SYMBOL		
										THE TECHNICAL MATERIEL CORP. MAMARONECK, NEW YORK			
							STOCK SIZE			SOCKET, PANEL MOUNT			
							MATERIAL						
A	1	PIN NOS ADD		2-3-82	21921	GDL							
ISSUE	ITEM	CHANGED FROM		DATE	CH. NO.	DRAFTS	CHECKER	ENG. APP.					
TOLERANCES				SCALE:			TYPE & TEMPER		HEAT TREAT. SPEC.	DRAWN	CHECKED	FINAL APPROVAL	
DEC. DIM. ±				MAXIMUM ALLOWABLE TOLERANCES HAVE BEEN DETERMINED AND ANY DEVIATIONS WILL BE CAUSE FOR REJECTION. REMOVE ALL BURRS AND SHARP EDGES								JJ-212	△
FRAC. DIM. ±													
ANGULAR DIM. ±													
							FINISH & SPEC. NO.			ELEC. DES. APP	MECH. DES. APP		

REQ. PER UNIT	USED ON			JJ-214
	MODEL	ASS'Y. NO.	DATE	
	SW-206		6-29-61	

MATERIAL :

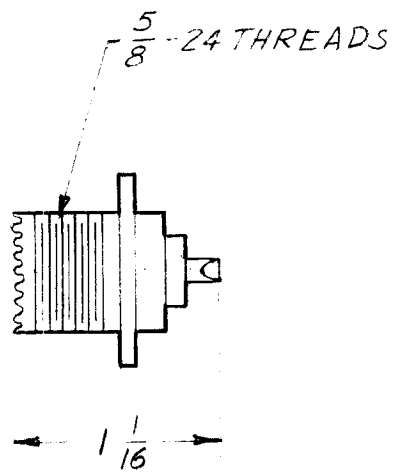
EXTERNAL PARTS : BRASS MACHINED
 CONTACTS : BERYLLIUM COPPER
 INSULATION : TEFLON

FINISH :

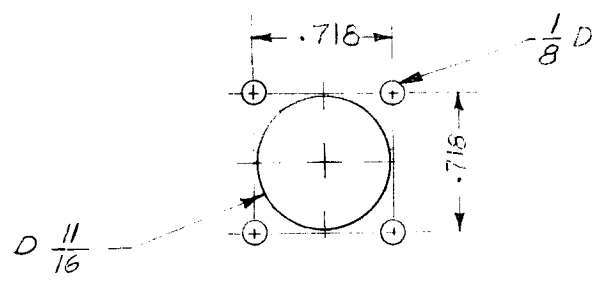
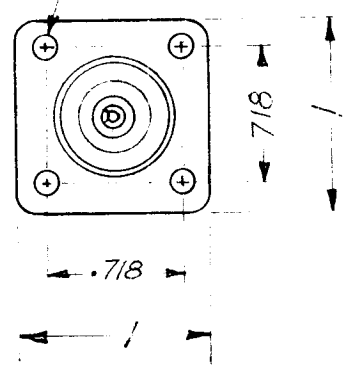
EXTERNAL PARTS:
 COPPER PLATE .0001TK
 PLUS SILVER PLATE .0002TK
 PLUS RHODIUM FLASH .00005 TK

CONTACTS :

GOLD PLATE .0001TK



1/8 D 4 HOLES



MOUNTING DETAIL

NOTE :

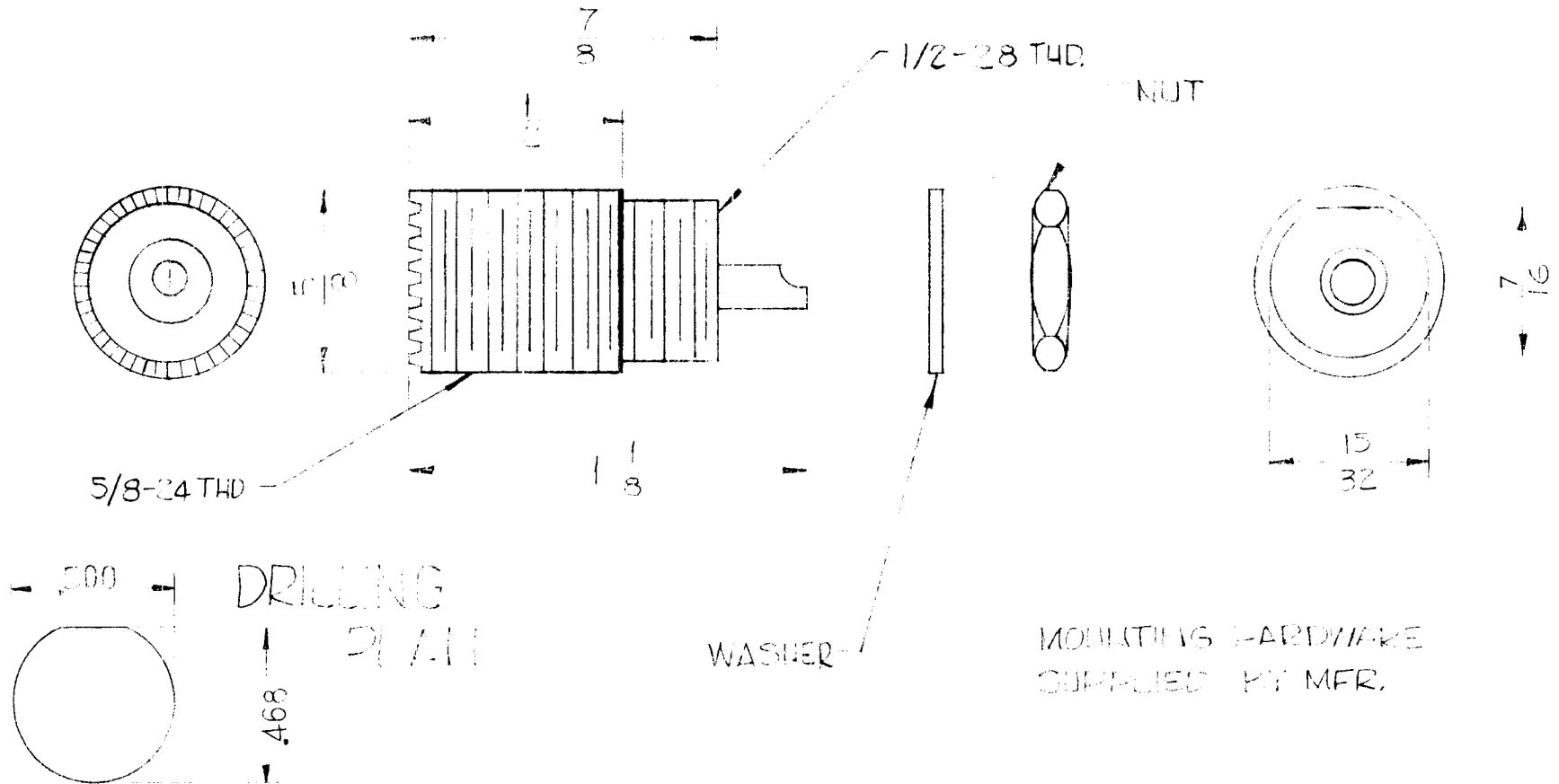
THIS RECEPTACLE IS A REPLACEMENT FOR 50-239 AND 50-239A WHERE PRODUCT QUALITY AS SHOWN HERE ON IS REQUIRED

MATING PLUG: PL-259

								REQ.	ITEM	PART NO.	DESCRIPTION			SYMBOL				
											THE TECHNICAL MATERIEL CORP.							
											MAMARONECK, NEW YORK							
											CONNECTOR, RECEPTACLE							
											SERIES UHF							
ISSUE	ITEM	CHANGED FROM	DATE	CH. NO.	DRAFTS	CHECKER	ENG. APP.	MATERIAL		DRAWN		CHECKED	FINAL APPROVAL					
TOLERANCES			SCALE: S-401-70-2400															
DEC. DIM. ±			MAXIMUM ALLOWABLE TOLERANCES HAVE BEEN DETERMINED AND ANY DEVIATIONS WILL BE CAUSE FOR REJECTION. REMOVE ALL BURRS AND SHARP EDGES					TYPE & TEMPER		HEATTREAT. SPEC.		DRAWN		CHECKED	FINAL APPROVAL			
FRAC. DIM. ±																		
ANGULAR DIM. ±												FINISH & SPEC. NO.		ELEC. DES. APP		MECH. DES. APP		JJ-214

DIM. FOR REF. ONLY

REQ. PER. UNIT	USED ON			JJ-215
	MODEL	ASSY. NO.	DATE	



ISSUE	ITEM	CHANGED FROM	DATE	CH. NO.	DRAFTS	CHECKER	ENG. APP.	REQ. ITEM	PART NO.	DESCRIPTION	SYMBOL	
										THE TECHNICAL MATERIEL CORP.		
										MAMARONECK, NEW YORK		
										RECEPTACLE, UHF		
TOLERANCES			SCALE: 5-401-139- #6804							RUZZO	UT	
DEC. DIM. ±			MAXIMUM ALLOWABLE TOLERANCES HAVE BEEN DETERMINED AND ANY DEVIATIONS WILL BE CAUSE FOR REJECTION. REMOVE ALL BURRS AND SHARP EDGES					TYPE & TEMPER	HEAT TREAT. SPEC.	DRAWN	CHECKED	FINAL APPROVAL
FRAC. DIM. ±								FINISH & SPEC. NO.				
ANGULAR DIM. ±						ELEC. DES. APP		MECH. DES. APP		JJ-215		

REQ. PER. UNIT	USED ON			JJ-216 E
	MODEL	ASSY. NO.	DATE	
	HFI-1		9-15-61	

NOTES:

1. Material - Diallyl phthalate glass-filled per MIL-M-19833, Type GDI-30 (GD).
2. Socket Contact - Phosphor bronze gold plated .00003 minimum thickness over .0002 silver plate.
3. Male and Female Mounting Plate and Bushing - Stainless steel, Type 303 passivated.
4. Mounting - Screws and Nuts - Brass cadmium plated per QQ-P-416 Class 3.
5. Solder cup to accept A 16 AWG wire.

REF: MATES WITH JJ-245

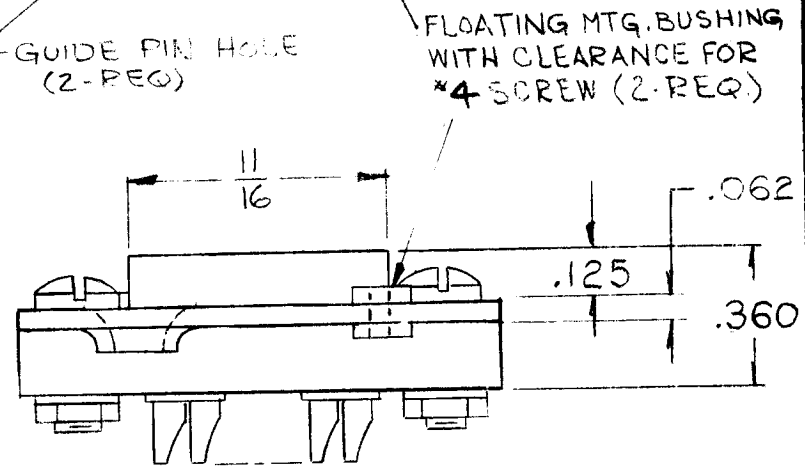
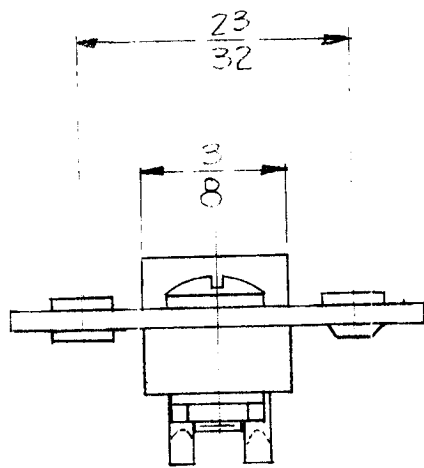
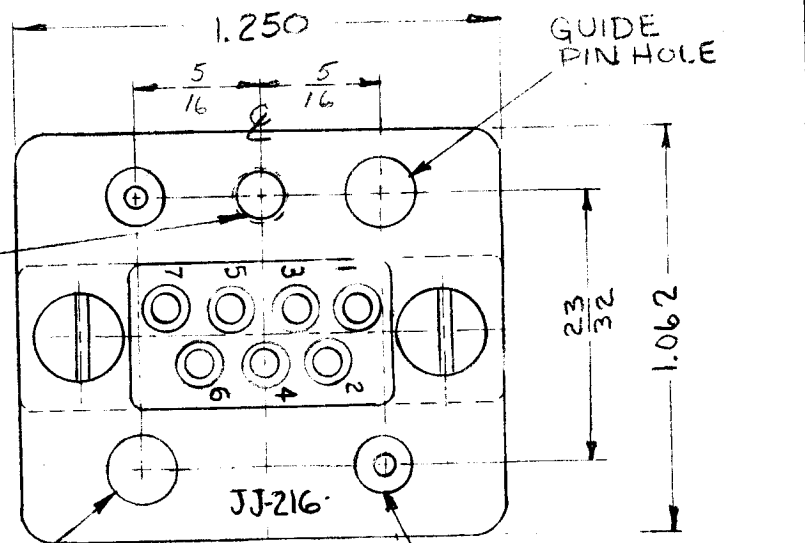
NOTICE TO PERSONS RECEIVING THIS DRAWING

THE TECHNICAL MATERIEL CORP. has a proprietary right in the material shown on this drawing. This drawing is issued to you for information only and may not be used or used to manufacture anything without the written permission from THE TECHNICAL MATERIEL CORPORATION to the user. This drawing is issued for mutual assistance and is subject to recall at any time.

Property of-

THE TECHNICAL MATERIEL CORPORATION
MAMARONECK, NEW YORK

STAMP TMC PART NO. V8 HIGH, GOTHIC, AS SHOWN.



REQ.	ITEM	PART NO.	DESCRIPTION		SYMBOL				
			THE TECHNICAL MATERIEL CORP. MAMARONECK, NEW YORK						
STOCK SIZE			CONNECTOR, RECEPTACLE, FEMALE						
MATERIAL									
E	PICTORIAL CLARIFIED	2-28-63 8288	R LOPEZ						
ISSUE	ITEM	CHANGED FROM	DATE	CH. NO.	DRAFTS				
TOLERANCES		SCALE 5/16" = 1" (MTS-16-SPMPGD)							
DEC. DIM. ±		MAXIMUM ALLOWABLE TOLERANCES HAVE BEEN DETERMINED AND ANY DEVIATIONS WILL BE CAUSE FOR REJECTION. REMOVE ALL BURRS AND SHARP EDGES							
FRAC. DIM. ±						TYPE & TEMPER		HEAT TREAT. SPEC.	
ANGULAR DIM. ±						DRAWN		CHECKED	
FINISH & SPEC. NO.			ELEC. DES. APP		MECH. DES. APP				
			JJ-216		E				

THE CONTENTS OF THIS DRAWING ARE THE EXCLUSIVE PROPERTY OF THE TECHNICAL MATERIEL CORP. ITS UNAUTHORIZED USE OR REPRODUCTION IN WHOLE OR IN PART IS STRICTLY FORBIDDEN.

REQ. PER UNIT

USED ON

MODEL

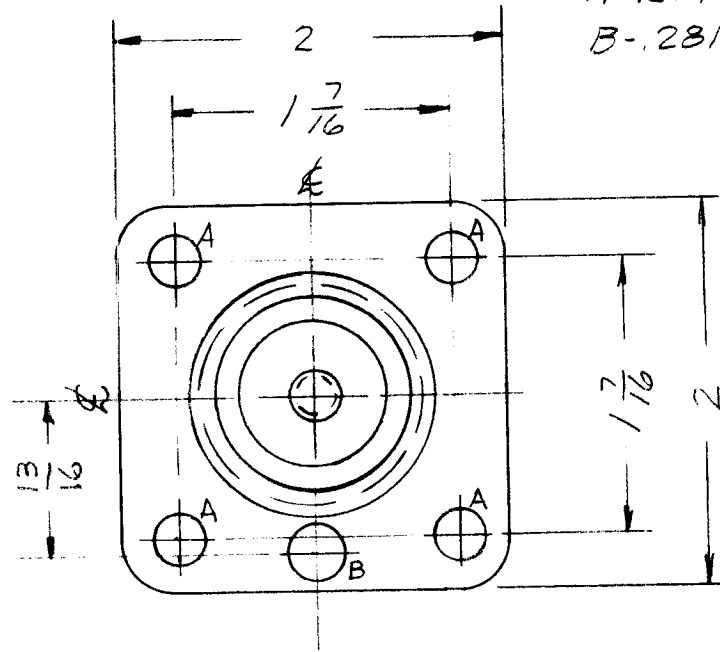
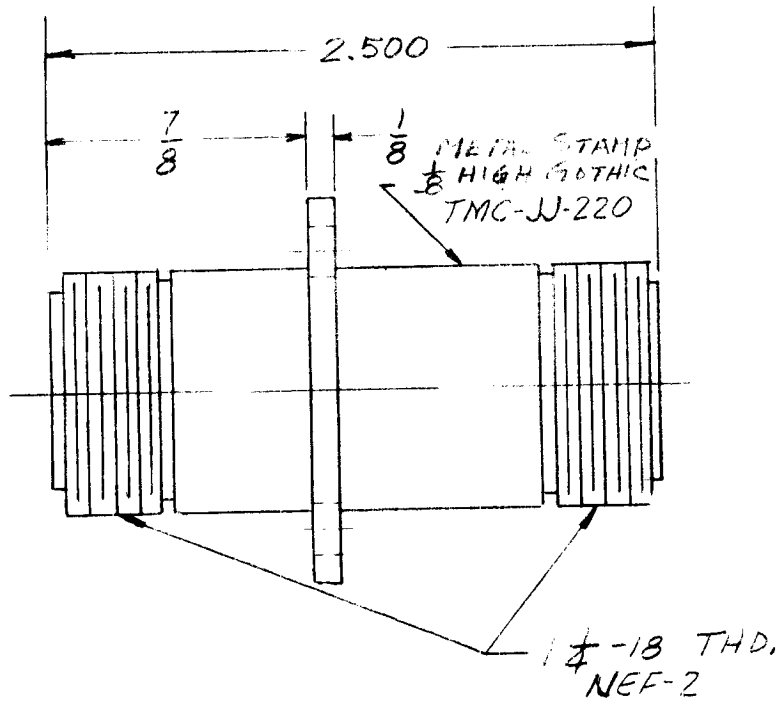
ASS'Y. NO.

DATE

JJ-220

10-4-61

HOLES
 A-.257 DIA. 4 REQ'D.
 B-.281 DIA. 1 REQ'D.



SPECIFICATIONS

Series- LC
 No. of Contacts- one (1)
 Type of Contacts- Female
 Dielectric- Teflon

ELECTRICAL DATA

Max. Peak Volt-5KV
 Nom. Impedance- 50 Ω
 Freq. Limit- 1000 MCS.

MATERIAL

External Parts- Brass
 Contacts-Beryllium Copper

FINISH

External Parts- Silver Plate
 .0002
 Rhodium Flash- .00005
 Contacts-Silver plate-.0002
 Gold flash .0001

REQ.	ITEM	PART NO.	DESCRIPTION		SYMBOL
			THE TECHNICAL MATERIEL CORP. MAMARONECK, NEW YORK		
			STOCK SIZE		
			MATERIAL		
			DRAWN		
			CHECKED		
			FINAL APPROVAL		
			ELEC. DES. APP.		
			MECH. DES. APP.		

CONNECTOR, RECEPTACLE
LC TO LC (F)

JJ-220

UNLESS OTHERWISE SPECIFIED:
 DIMENSIONS ARE IN INCHES
 TOLERANCES ON
 FRAC. ± 1/64 DEC. ± .005 ANGLES ± 1/2°

SCALE: S-401-70(2310)
 MAXIMUM ALLOWABLE TOLERANCES HAVE BEEN DETERMINED AND ANY DEVIATIONS WILL BE CAUSE FOR REJECTION.
 REMOVE ALL BURRS AND SHARP EDGES

THE CONTENTS OF THIS DRAWING ARE THE EXCLUSIVE PROPERTY OF THE TECHNICAL MATERIEL CORP. ITS UNAUTHORIZED USE OR REPRODUCTION IN WHOLE OR IN PART IS STRICTLY FORBIDDEN.

REQ. PER UNIT

USED ON

MODEL

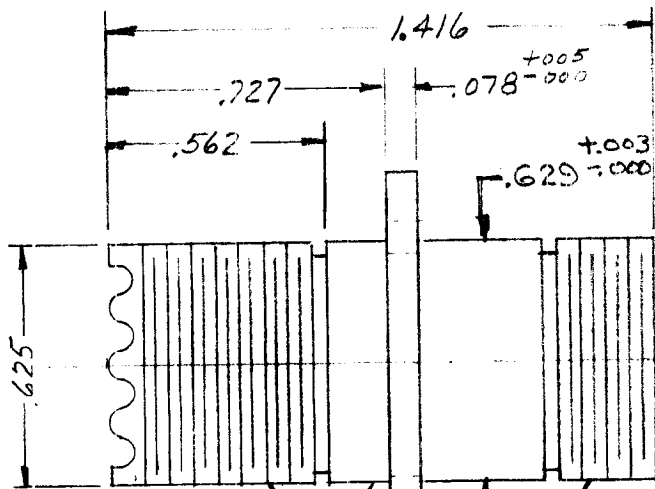
ASS'Y. NO.

DATE

10-4-61

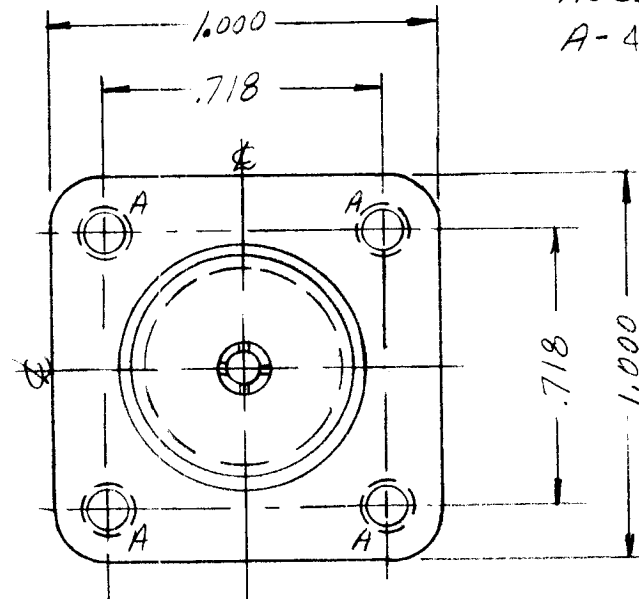
JJ-221

B



METAL STAMP
VB HIGH GOTHIC
TMC No JJ-221

5/8-24 THD



HOLE:

A-4-40 TAP 4 REQ'D.

SPECIFICATIONS

Series - N (F)-UHF (F)
No of Contacts- one (1)
Type of Contact- Female
Dielectric- Teflon

ELECTRICAL DATA

Max. Peak Volt.- 1.5 KV
Nom. Impedance-50 Ω
Freq. Limit- 10,000 MCS

MATERIAL

External Parts- Brass
Contacts- Beryllium Copper

FINISH

(.0002)
External Parts-Silver plate
Rhodium Flash- .00005
Contacts- Silver plate .0002
Gold Flash .0001

REQ.	ITEM	PART NO.	DESCRIPTION			SYMBOL					
			THE TECHNICAL MATERIEL CORP. MAMARONECK, NEW YORK								
B	SIZE CLARIFIED "A" HOLE WAS 4-40	4-12-66 16085 wfw	STOCK SIZE								
A			MATERIAL								
SYM	DESCRIPTION	DATE	CH. NO.	DRAFTS	CHECKER	ENG. APP.					
UNLESS OTHERWISE SPECIFIED: DIMENSIONS ARE IN INCHES TOLERANCES ON FRAC. ± 1/64 DEC. ± .005 ANGLES ± 1/2°		SCALE: S401-70 (2311)									
MAXIMUM ALLOWABLE TOLERANCES HAVE BEEN DETERMINED AND ANY DEVIATIONS WILL BE CAUSE FOR REJECTION. REMOVE ALL BURRS AND SHARP EDGES		TYPE & TEMPER		HEATTREAT.SPEC.		DRAWN		CHECKED		FINAL APPROVAL	
FINISH & SPEC. NO.		ELEC. DES. APP.		MECH. DES. APP.		JJ-221		B			

THE CONTENTS OF THIS DRAWING ARE THE EXCLUSIVE PROPERTY OF THE TECHNICAL MATERIEL CORP. ITS UNAUTHORIZED USE OR REPRODUCTION IN WHOLE OR IN PART IS STRICTLY FORBIDDEN.

REQ. PER UNIT

MODEL

USED ON

ASS'Y. NO.

DATE

10-2-61

JJ-222

SPECIFICATIONS

SERIES-N

NO. OF CONTACTS-ONE (1)

TYPE OF CONTACT-FEMALE

DIELECTRIC ~

ELECTRICAL DATA

MAX. PEAK OPR. VOLT ~ 500 V.

FREQ. LIMIT ~

NOM. IMPEDANCE-70Ω

CABLE ACCOMODATIONS

TYPE ~

MAX. O.D. ~

MATERIAL

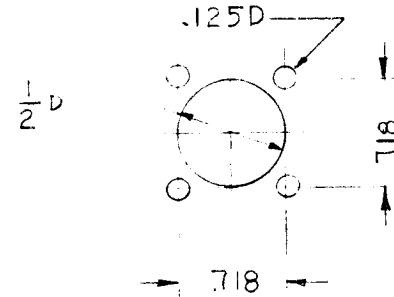
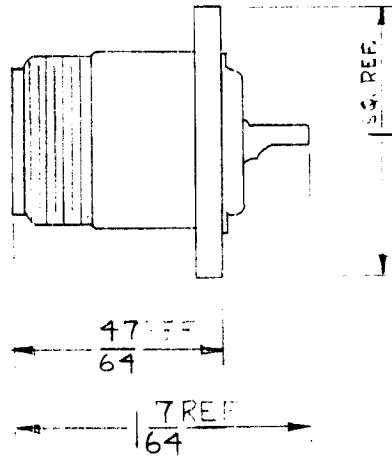
EXTERNAL PARTS-BRASS

CONTACT-BERYLLIUM

FINISH

EXTERNAL PARTS-SILVER PLATE
& RHODIUM FLASH

CONTACT-SILVER PLATE &
GOLD FLASH



CRASSIS DRILLING PLAN

RECEPTACLE TO BE MANUFACTURED ACCORDING TO JAN. C-17A AND AMMEND.

REQ.	ITEM	PART NO.	DESCRIPTION		SYMBOL
			THE TECHNICAL MATERIEL CORP. MAMARONECK, NEW YORK		
			STOCK SIZE		
			MATERIAL		
			70Ω N		
			DRAWN		
			CHECKED		
			FINAL APPROVAL		
			JJ-222		
			ELEC. DES. APP.		
			MECH. DES. APP.		
			FINISH & SPEC. NO.		

SYM	DESCRIPTION	DATE	CH. NO.	DRAFTS	CHECKER	ENG. APP.
	UNLESS OTHERWISE SPECIFIED: DIMENSIONS ARE IN INCHES TOLERANCES ON FRAC. ± 1/64 DEC. ± .005 ANGLES ± 1/2°					
		SCALE: S-401-70 (2431) S-401-71 (82-112)				
		MAXIMUM ALLOWABLE TOLERANCES HAVE BEEN DETERMINED AND ANY DEVIATIONS WILL BE CAUSE FOR REJECTION. REMOVE ALL BURRS AND SHARP EDGES				

THE CONTENTS OF THIS DRAWING ARE THE EXCLUSIVE PROPERTY OF THE TECHNICAL MATERIEL CORP. ITS UNAUTHORIZED USE OR REPRODUCTION IN WHOLE OR IN PART IS STRICTLY FORBIDDEN.

REQ. PER UNIT

USED ON

MODEL

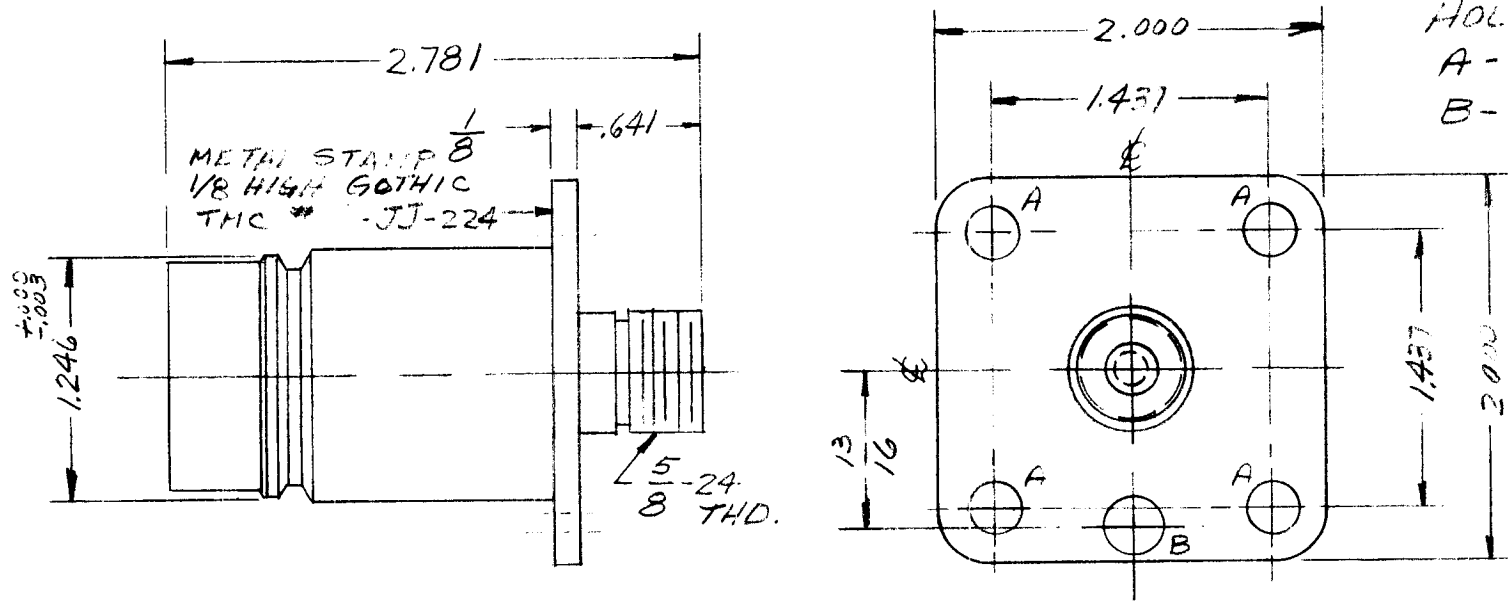
ASS'Y. NO.

DATE

10-4-61

JJ-224

A



SPECIFICATIONS

Series- QDL (F)-N(F)
No. of Contacts- one (1)
Type of Contact- Female
Dielectric- Teflon

ELECTRICAL DATA

Max. Peak Volt.-5KV
Nom. Impedance-50 Ω
Freq. Limit- 10,000 MCS

MATERIAL

External Parts- Brass
Contacts- Beryllium Copper

FINISH

External Parts- Silver Plate
.0002
Rhodium Flash- .00005
Contacts- Silver Plate .0002
Gold Plate .0001

REQ. ITEM							PART NO.			DESCRIPTION			SYMBOL	
										THE TECHNICAL MATERIEL CORP.				
							STOCK SIZE			MAMARONECK, NEW YORK				
										ADAPTOR, CONNECTOR				
										QDL (F) TO N (F)				
SYM		DESCRIPTION			DATE	CH. NO.	DRAFTS	CHECKER	ENG. APP.	MATERIAL				
A		QDL WAS QDS			9/4/70			CV						
UNLESS OTHERWISE SPECIFIED:					SCALE: 5401-70 (2312)			TYPE & TEMPER			HEATTREAT. SPEC.	DRAWN	CHECKED	FINAL APPROVAL
DIMENSIONS ARE IN INCHES					MAXIMUM ALLOWABLE TOLERANCES HAVE BEEN DETERMINED AND ANY DEVIATIONS WILL BE CAUSE FOR REJECTION. REMOVE ALL BURRS AND SHARP EDGES									
TOLERANCES ON														
FRAC. $\pm 1/64$ DEC. $\pm .005$ ANGLES $\pm 1/20^\circ$								FINISH & SPEC. NO.			ELEC. DES. APP.	MECH. DES. APP.		
													JJ-224 A	

THE CONTENTS OF THIS DRAWING ARE THE EXCLUSIVE PROPERTY OF THE TECHNICAL MATERIEL CORP. ITS UNAUTHORIZED USE OR REPRODUCTION IN WHOLE OR IN PART IS STRICTLY FORBIDDEN.

REQ. PER UNIT

USED ON

MODEL

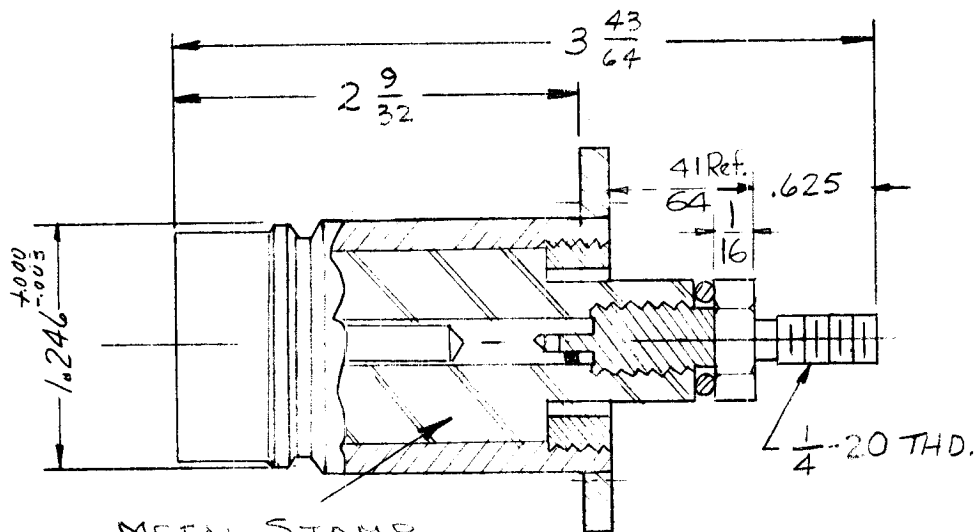
ASS'Y. NO.

DATE

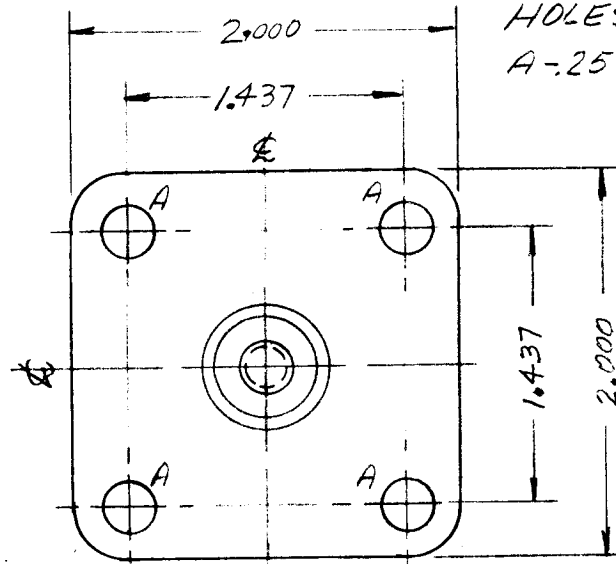
10-5-61

JJ-225

B



METAL STAMP
V8 HIGH GOTHIC TMC # JJ-225



HOLES:
A-.257 DIA. 4 REQ'D.

SPECIFICATIONS

Series -ODL
No. of Connections- one (1)
Type of Contact- Female
Dielectric- Teflon

ELECTRICAL DATA

Max. Peak Volt.-10KV
Nom. Impedance- 50 Ω
Freq. Limit- 1000MCS

MATERIAL

External Parts- Brass
Contacts- Beryllium Copper

FINISH

External Parts- Silver Plate
.0002
Rhodium Flash- .00005
Contacts- Silver plate
.0002
Gold Flash .0001

REQ. ITEM	PART NO.	DESCRIPTION	SYMBOL
B	ON PICT. THD-WAS 1/4-Z8	10/25/61 5750	BB
A	MOD. TO AGREE WITH MFR. LEARNING.	10/13/61 5725	2821
SYM	DESCRIPTION	DATE	CH. NO.
UNLESS OTHERWISE SPECIFIED: DIMENSIONS ARE IN INCHES TOLERANCES ON FRAC. ± 1/64 DEC. ± .005 ANGLES ± 1/2°		SCALE: 5401-70(2308)	
MAXIMUM ALLOWABLE TOLERANCES HAVE BEEN DETERMINED AND ANY DEVIATIONS WILL BE CAUSE FOR REJECTION. REMOVE ALL BURRS AND SHARP EDGES		TYPE & TEMPER	
FINISH & SPEC. NO.		HEATTREAT. SPEC.	
ELEC. DES. APP.		MECH. DES. APP.	
DRAWN		CHECKED	
FINAL APPROVAL		JJ-225 B	

THE TECHNICAL MATERIEL CORP.
MAMARONECK, NEW YORK
ADAPTOR, CONNECTOR
ODL

JJ-225 B

THE CONTENTS OF THIS DRAWING ARE THE EXCLUSIVE PROPERTY OF THE TECHNICAL MATERIEL CORP. ITS UNAUTHORIZED USE OR REPRODUCTION IN WHOLE OR IN PART IS STRICTLY FORBIDDEN.

REQ. PER UNIT

MODEL

USED ON

ASS'Y. NO.

DATE

5-31-62

JJ-230

1"-20 THD. - CL-2

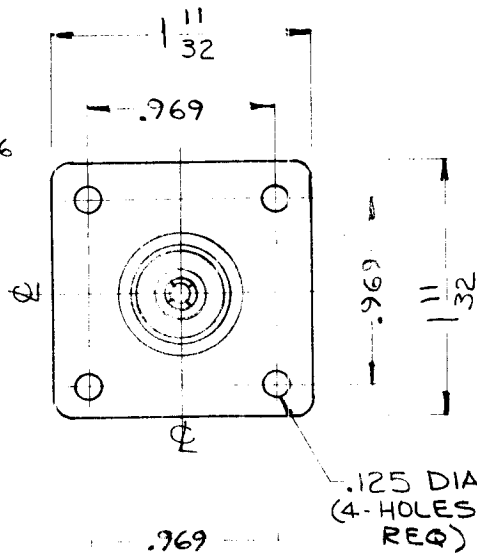
STAMP TMC
PART NO. JJ-230, 1/16
HIGH, GOTHIC

1.000
PIECES

.623

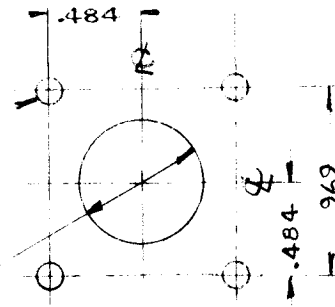
.724

1 9/16 APPROX.



.125 HOLE DIA
(4 - REQ)

41 DIA
64



MOUNTING DETAIL

SPECIFICATIONS:

Series - QDS
No. of Contacts - One (1)
Type of Contact - Female
Dielectric - Teflon

ELECTRICAL DATA:

Max. Peak Opr. Volt - 1000 Volts
Freq. Limit - 10,000 Mcs.
Nominal Impedance - 50 Ohms

MATING ACCOMMODATIONS:

Type - UHF (L)

MATERIAL:

External Parts - Brass
Contact - Beryllium Copper
Gasket - None

FINISH:

External Parts - Silver Plate and
Rhodium Flash
Contact - Silver Plate, Gold Flash

REF: TRU-

REQ.	ITEM	PART NO.	DESCRIPTION		SYMBOL
			THE TECHNICAL MATERIEL CORP. MAMARONECK, NEW YORK		
			ADAPTOR, CONNECTOR		
			SERIES 'UHF' TO 'QDS'		
			MATERIAL		
			TYPE & TEMPER	HEATTREAT.SPEC.	DRAWN
			SEE NOTE		CHECKED
			FINISH & SPEC. NO.		ELEC. DES. APP.
					MECH. DES. APP.
					FINAL APPROVAL
					JJ-230

UNLESS OTHERWISE SPECIFIED:
DIMENSIONS ARE IN INCHES
TOLERANCES ON
FRAC. ± 1/64 DEC. ± .005 ANGLES ± 1/2°

SCALE: 3-401-70 (2350)
MAXIMUM ALLOWABLE TOLERANCES HAVE BEEN DETERMINED AND ANY DEVIATIONS WILL BE CAUSE FOR REJECTION.
REMOVE ALL BURRS AND SHARP EDGES

P.S. [Signature]
DRAWN [Signature]
CHECKED [Signature] 6/6/62
FINAL APPROVAL [Signature]
JJ-230

REQ. PER UNIT	USED ON		
	MODEL	ASS'Y. NO.	DATE
			JJ-231

SPECIFICATIONS:
Series - QDL
No. of Contacts - ONE (1)
Type of Contact - FEMALE
Dielectric - TEFLON

ELECTRICAL DATA:
Max. Peak Opr. Volt - 1500 V
Freq. Limit - 10,000 MCS
Nominal Impedance - 50 OHMS

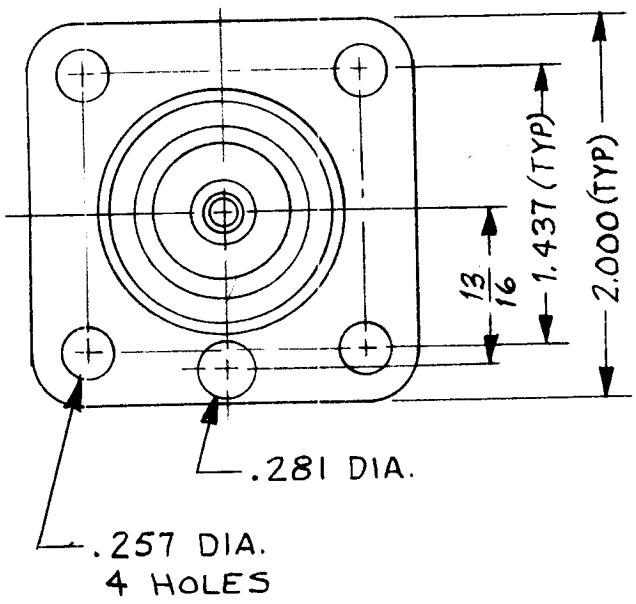
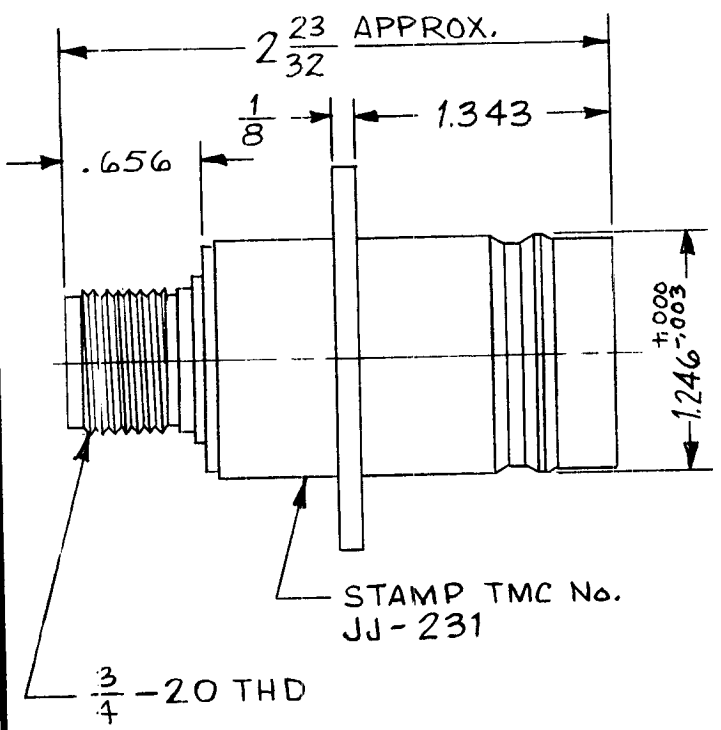
CABLE ACCOMMODATIONS:
Type - NONE

MATING ACCOMMODATIONS:
Type - HN

MATERIAL:
External Parts - BRASS
Contact - BERYLLIUM COPPER
Gasket - NONE

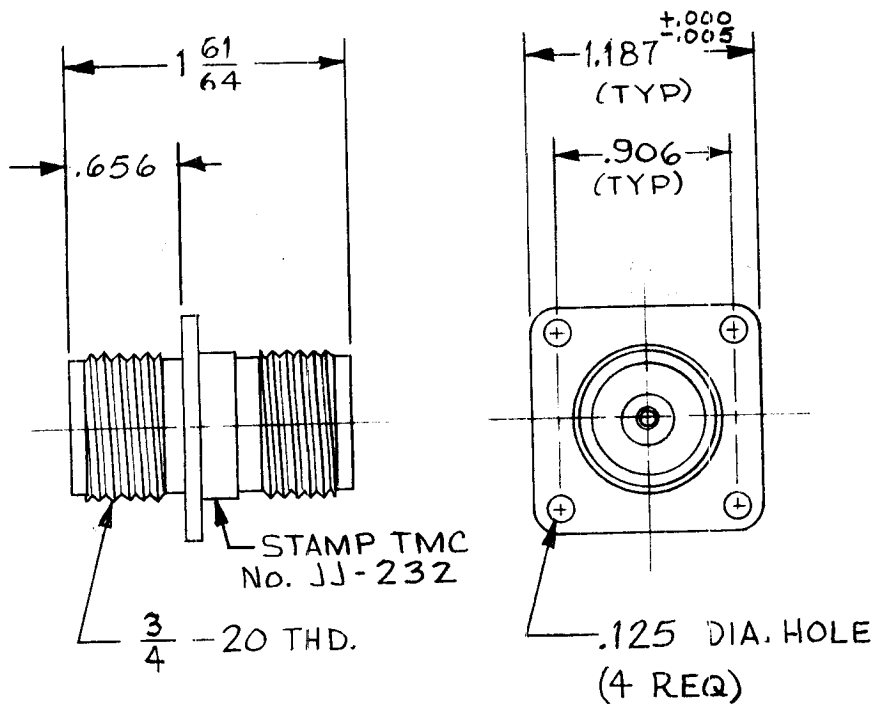
FINISH:
External Parts - RHODIUM
Contact - GOLD FLASH

PANEL:
Max. Thickness - 3/16



							REQ. ITEM	PART NO.	MARTINENGO DESCRIPTION	SYMBOL	
									THE TECHNICAL MATERIEL CORP. MAMARONECK. NEW YORK		
							STOCK SIZE		ADAPTER, CONNECTOR, RECEPTACLE		
							MATERIAL		QDL (F) TO HN (F)		
SYM	DESCRIPTION	DATE	CH. NO.	DRAFTS	CHECKER	ENG. APP.		M.TANTILLO 9-26-64	10/4/69	BP	
UNLESS OTHERWISE SPECIFIED DIMENSIONS ARE IN INCHES AND INCLUDE CHEMICALLY APPLIED OR PLATED FINISHES		SCALE							DRAWN	CHECKED	FINAL APPROVAL
DECIMALS .X ± .05 .XX ± .01 .XXX ± .005	TOLERANCES	FRACTIONS ± 1/64 ANGLES ± 0° 30'	CODE	S401-70-2696						10/4/69	JJ-231
							FINISH & SPEC. NO.	ELEC. DES. APP.	MECH. DES. APP.		

REQ. PER UNIT	USED ON			JJ-232
	MODEL	ASS'Y. NO.	DATE	



SPECIFICATIONS:
 Series - HN
 No. of Contacts - ONE (1)
 Type of Contact - FEMALE
 Dielectric - TEFLON

ELECTRICAL DATA:
 Max. Peak Opr. Volt - 5000 V
 Freq. Limit -
 Nominal Impedance - 50 Ω

CABLE ACCOMMODATIONS:
 Type - NONE

MATING ACCOMMODATIONS:
 Type - HN

MATERIAL:
 External Parts - BRASS
 Contact - BERYLLIUM COPPER
 Gasket - NONE

FINISH:
 External Parts - RHODIUM
 Contact - GOLD

PANEL:
 Max. Thickness - 3/16"

REQ.	ITEM	PART NO.	MARTINENGO DESCRIPTION				SYMBOL
			THE TECHNICAL MATERIEL CORP. MAMARONECK. NEW YORK				
			CONNECTOR, RECEPTACLE				
			HN (F) TO HN (F)				
SYM	DESCRIPTION	DATE	CH. NO.	DRAFTS	CHECKER	ENG. APP.	MATERIAL
	UNLESS OTHERWISE SPECIFIED DIMENSIONS ARE IN INCHES AND INCLUDE CHEMICALLY APPLIED OR PLATED FINISHES	SCALE					M. TANTILLO 9-24-63
	TOLERANCES	FRACTIONS ± 1/64 ANGLES ± 0° 30'	CODE	S401-70-2697			TYPE & TEMPER
							HEAT TREAT. SPEC.
							DRAWN
							CHECKED
							FINAL APPROVAL
							BP
							AM 9/24/63
							JJ-232
							ELEC. DES. APP.
							MECH. DES. APP.
							FINISH & SPEC. NO.

THE CONTENTS OF THIS DRAWING ARE THE EXCLUSIVE PROPERTY OF THE TECHNICAL MATERIEL CORP. ITS UNAUTHORIZED USE OR REPRODUCTION IN WHOLE OR IN PART IS STRICTLY FORBIDDEN.

REQ. PER UNIT

3

MODEL

HFP-1

USED ON

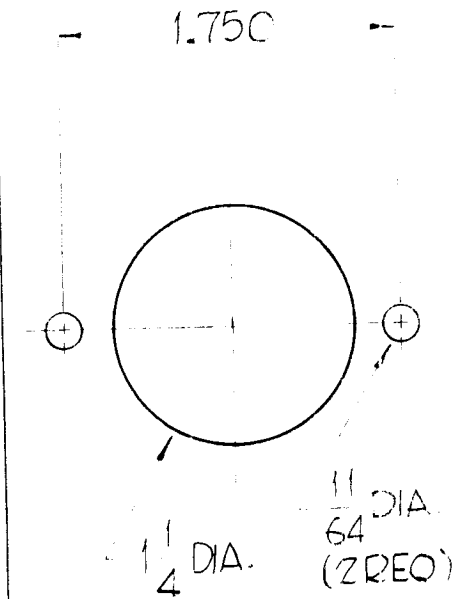
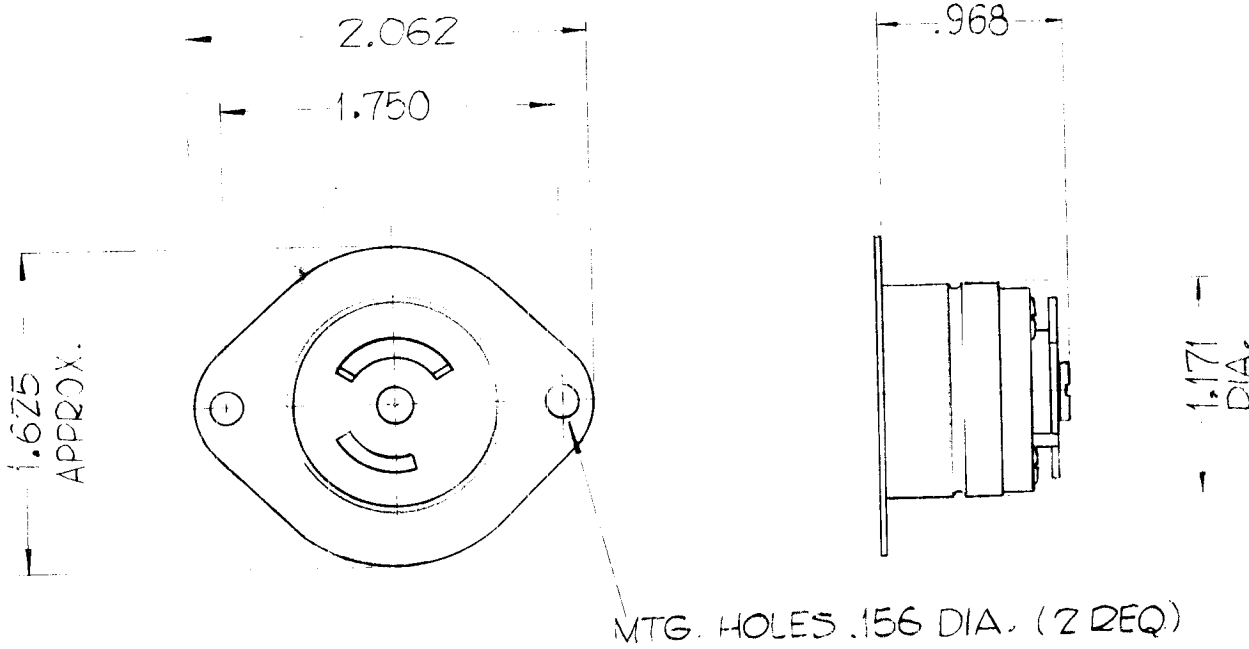
ASS'Y. NO.

DATE

12-11-61

JJ-235

MTG. DETAIL



ELECTRICAL SPECIFICATIONS

10 AMPS, 250 VOLTS
15 AMPS, 125 VOLTS

							REQ.	ITEM	PART NO.	DESCRIPTION	SYMBOL	
										THE TECHNICAL MATERIEL CORP.		
										MAMARONECK, NEW YORK		
										PLUG, RECEPTACLE,		
										TWIST-LOCK (FEMALE)		
SYM	DESCRIPTION	DATE	CH. NO.	DRAFTS	CHECKER	ENG. APP.			MATERIAL	John C. Biele		
UNLESS OTHERWISE SPECIFIED:		SCALE: 5/16" = 1" (748)										
DIMENSIONS ARE IN INCHES		MAXIMUM ALLOWABLE TOLERANCES HAVE BEEN DETERMINED AND ANY DEVIATIONS WILL BE CAUSE FOR REJECTION. REMOVE ALL BURRS AND SHARP EDGES					TYPE & TEMPER	HEAT TREAT. SPEC.	DRAWN	CHECKED	FINAL APPROVAL	
TOLERANCES ON												
FRAC. ± 1/64 DEC. ± .005 ANGLES ± 1/2°							FINISH & SPEC. NO.		ELEC. DES. APP.	MECH. DES. APP.	JJ-235	

THE CONTENTS OF THIS DRAWING ARE THE EXCLUSIVE PROPERTY OF THE TECHNICAL MATERIEL CORP. ITS UNAUTHORIZED USE OR REPRODUCTION IN WHOLE OR IN PART IS STRICTLY FORBIDDEN.

REQ. PER UNIT

MODEL

USED ON

ASS'Y. NO.

DATE

12-20-61

JJ-236

~SPECIFICATIONS~

SERIES - QDS
 NO. OF CONTACTS - ONE
 TYPE OF CONTACTS - FEMALE
 DIELECTRIC - TEFLON

~ELECTRICAL DATA~

MAX. PEAK VOLTAGE - 5000V
 NOM. IMPEDANCE - 50 Ω

~MATING ACCOMODATIONS~

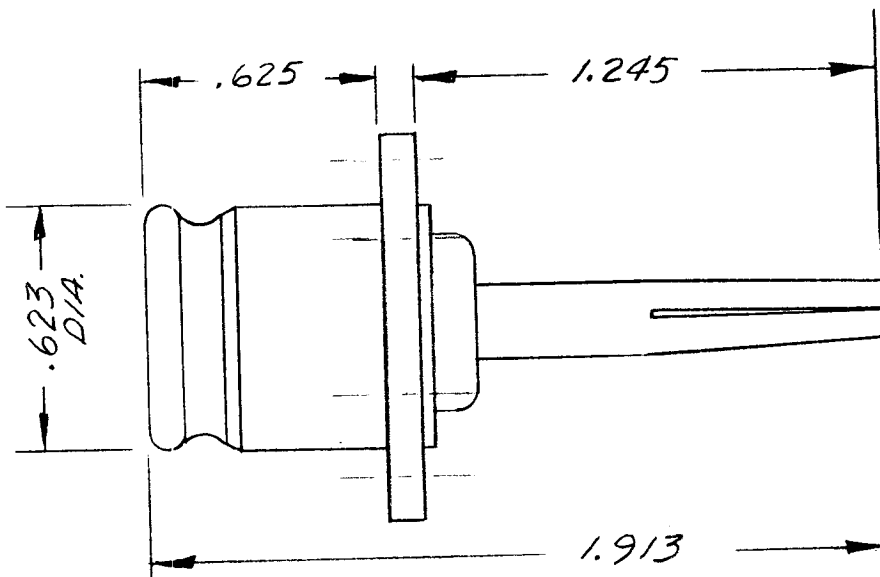
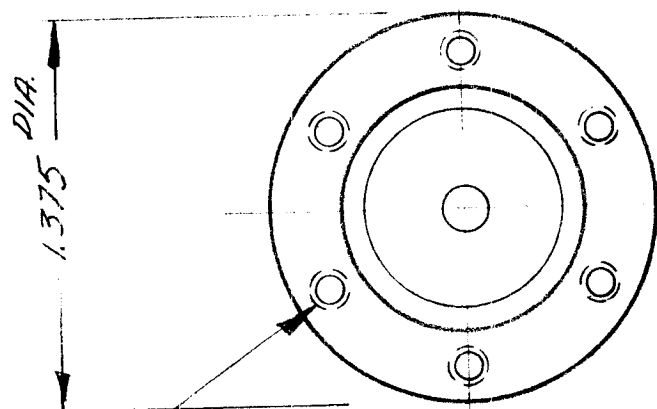
TYPE - QDS

~MATERIAL~

EXT. PARTS - BRASS
 CONTACTS - BERYL-LIUM COPPER

~FINISH~

EXT. PARTS - SILVER PLATE
 CONTACTS - RHODIUM FLASH
 CONTACTS - SILVER PLATE & GOLD FLASH



4-40 NC-2 TAP ON 1.187 DIA. BASE LINE, 60° APART (6 REQ)

REQ.	ITEM	PART NO.	DESCRIPTION		SYMBOL				
			THE TECHNICAL MATERIEL CORP. MAMARONECK, NEW YORK						
			CONNECTOR, RECEPTACLE ELECTRICAL (QDS)						
			MATERIAL						
			TYPE & TEMPER	HEATTREAT. SPEC.					
			FINISH & SPEC. NO.						
SYM	DESCRIPTION	DATE	CH. NO.	DRAFTS	CHECKER	ENG. APP.	DRAWN	CHECKED	FINAL APPROVAL
	UNLESS OTHERWISE SPECIFIED: DIMENSIONS ARE IN INCHES TOLERANCES ON FRAC. ± 1/64 DEC. ± .005 ANGLES ± 1/2°								
			SCALE: S-401-70-2425						
			MAXIMUM ALLOWABLE TOLERANCES HAVE BEEN DETERMINED AND ANY DEVIATIONS WILL BE CAUSE FOR REJECTION. REMOVE ALL BURRS AND SHARP EDGES						
									JJ-236

THE CONTENTS OF THIS DRAWING ARE THE EXCLUSIVE PROPERTY OF THE TECHNICAL MATERIEL CORP. ITS UNAUTHORIZED USE OR REPRODUCTION IN WHOLE OR IN PART IS STRICTLY FORBIDDEN.

REQ. PER UNIT

MODEL

USED ON

ASS'Y. NO.

DATE

5-28-62

JJ-243

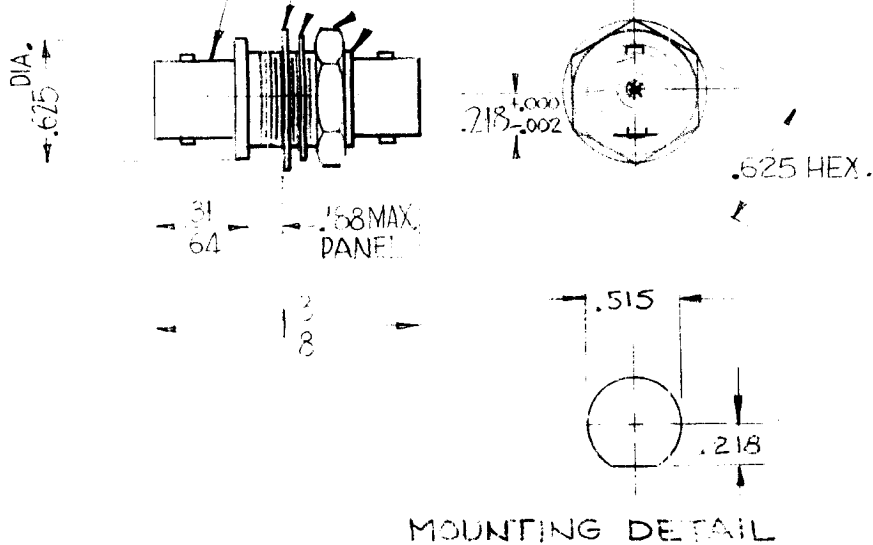
STAMP TMC # JJ-243
1/16 HIGH GOT-HIC.

FLAT WASHER

INTERNAL LOCKWASHER

1/2-28 NEF-2A

HEX. NUT



SPECIFICATIONS:

Series - BNC
No. of Contacts - One (1)
Type of Contact - Female
Dielectric - Teflon

ELECTRICAL DATA:

Max. Peak Opr. Volt - 500 Volts
Freq. Limit - 10,000 MCs.
Nominal Impedance - 50 Ohms

MATING ACCOMMODATIONS:

Type - BNC

MATERIAL:

External Parts - Brass
Contact - Beryllium Copper
Gasket - None

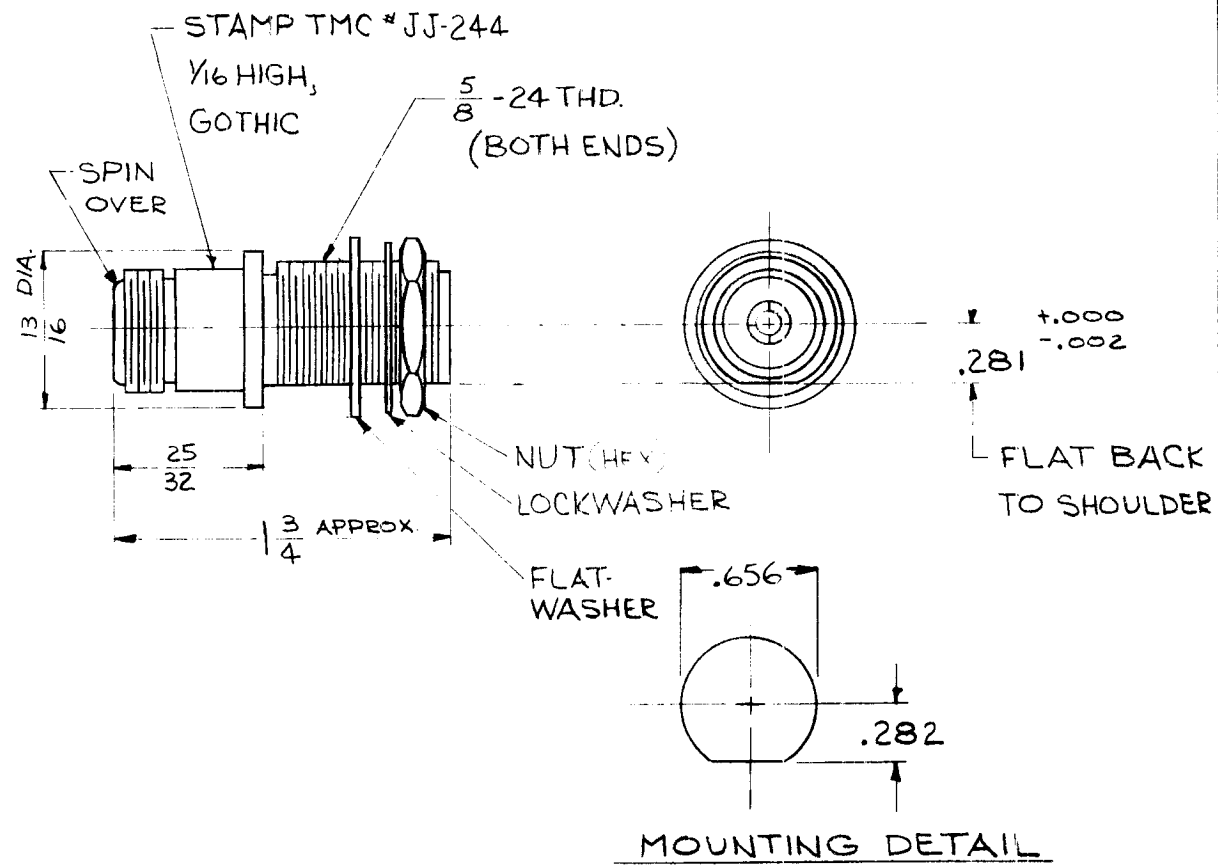
FINISH:

External Parts - Silver Plate and Rhodium Flash
Contact - Silver Plate, Gold Flash

REQ.	ITEM	PART NO.	DESCRIPTION	SYMBOL					
			THE TECHNICAL MATERIEL CORP. MAMARONECK, NEW YORK						
			STOCK SIZE						
			SEE NOTE	CONNECTOR, RECEPTACLE					
			MATERIAL	BNC SERIES					
SYM	DESCRIPTION	DATE	CH. NO.	DRAFTS	CHECKER	ENG. APP.			
UNLESS OTHERWISE SPECIFIED: DIMENSIONS ARE IN INCHES TOLERANCES ON FRAC. ± 1/64 DEC. ± .005 ANGLES ± 1/2°		SCALE: 5/401-10 (2601)							
		MAXIMUM ALLOWABLE TOLERANCES HAVE BEEN DETERMINED AND ANY DEVIATIONS WILL BE CAUSE FOR REJECTION. REMOVE ALL BURRS AND SHARP EDGES							
		TYPE & TEMPER	HEATTREAT. SPEC.	DRAWN		CHECKED		FINAL APPROVAL	
		SEE NOTE				6/6/62		JJ-243	
		FINISH & SPEC. NO.		ELEC. DES. APP.		MECH. DES. APP.			

THE CONTENTS OF THIS DRAWING ARE THE EXCLUSIVE PROPERTY OF THE TECHNICAL MATERIEL CORP. ITS UNAUTHORIZED USE OR REPRCDUCTION IN WHOLE OR IN PART IS STRICTLY FORBIDDEN.

REQ. PER UNIT	USED ON		JJ-244
	MODEL	ASS'Y. NO.	
		DATE	
		5-29-62	



SPECIFICATIONS:
 Series - "N"
 No. of Contacts - One (Each End)
 Type of Contact - Female
 Dielectric - Teflon

ELECTRICAL DATA:
 Max. Peak Opr. Volt - 15,000 Volts
 Freq. Limit - 10,000 MCs.
 Nominal Impedance - 50 Ohms

MATING ACCOMMODATIONS:
 Type - "N"

MATERIAL:
 External Parts - Brass
 Contact - Beryllium Copper
 Gasket - None

FINISH:
 External Parts - Silver Plate and Rhodium Flash
 Contact - Silver Plate, Gold Flash

SYM	DESCRIPTION	DATE	CH. NO.	DRAFTS	CHECKER	ENG. APP.	REQ.	ITEM	PART NO.	DESCRIPTION	SYMBOL
										THE TECHNICAL MATERIEL CORP. MAMARONECK, NEW YORK	
									STOCK SIZE	CONNECTOR, RECEPTACLE	
									SEE NOTE	SERIES "N"	
									MATERIAL		
										G.S. 5-29-62	
									TYPE & TEMPER	CHECKED	FINAL APPROVAL
									HEATTREAT. SPEC.	6/6/62	JJ-244
									SEE NOTE		
									FINISH & SPEC. NO.	ELEC. DES. APP.	MECH. DES. APP.

UNLESS OTHERWISE SPECIFIED:
 DIMENSIONS ARE IN INCHES
 TOLERANCES ON
 FRAC. ± 1/64 DEC. ± .005 ANGLES ± 1/2°

SCALE: 5401-70 (2602)
 MAXIMUM ALLOWABLE TOLERANCES HAVE BEEN DETERMINED AND ANY DEVIATIONS WILL BE CAUSE FOR REJECTION.
 REMOVE ALL BURRS AND SHARP EDGES

THE CONTENTS OF THIS DRAWING ARE THE EXCLUSIVE PROPERTY OF THE TECHNICAL MATERIEL CORP. ITS UNAUTHORIZED USE OR REPRODUCTION IN WHOLE OR IN PART IS STRICTLY FORBIDDEN.

REQ. PER UNIT	USED ON		
	MODEL	ASS'Y. NO.	DATE
7	HFI-1		4-4-62
4	SBS		4-4-62

JJ-245 B

NOTES:

- MATERIAL - DIALLYL PHTHALATE GLASS-FILLED PER MIL-M-19833, TYPE GDI-30 (GD).
- PIN CONTACT - BRASS, GOLD PLATED .00003 MINIMUM THICKNESS OVER .0002 SILVER PLATE.
- MALE AND FEMALE MOUNTING PLATE AND BUSHING - STAINLESS STEEL, TYPE 303 PASSIVATED.
- MOUNTING - SCREWS AND NUTS - BRASS CADMIUM PLATED, PER QQ-P-416 CLASS 3.
- SOLDER CUP TO ACCEPT A 16 AWG WIRE.

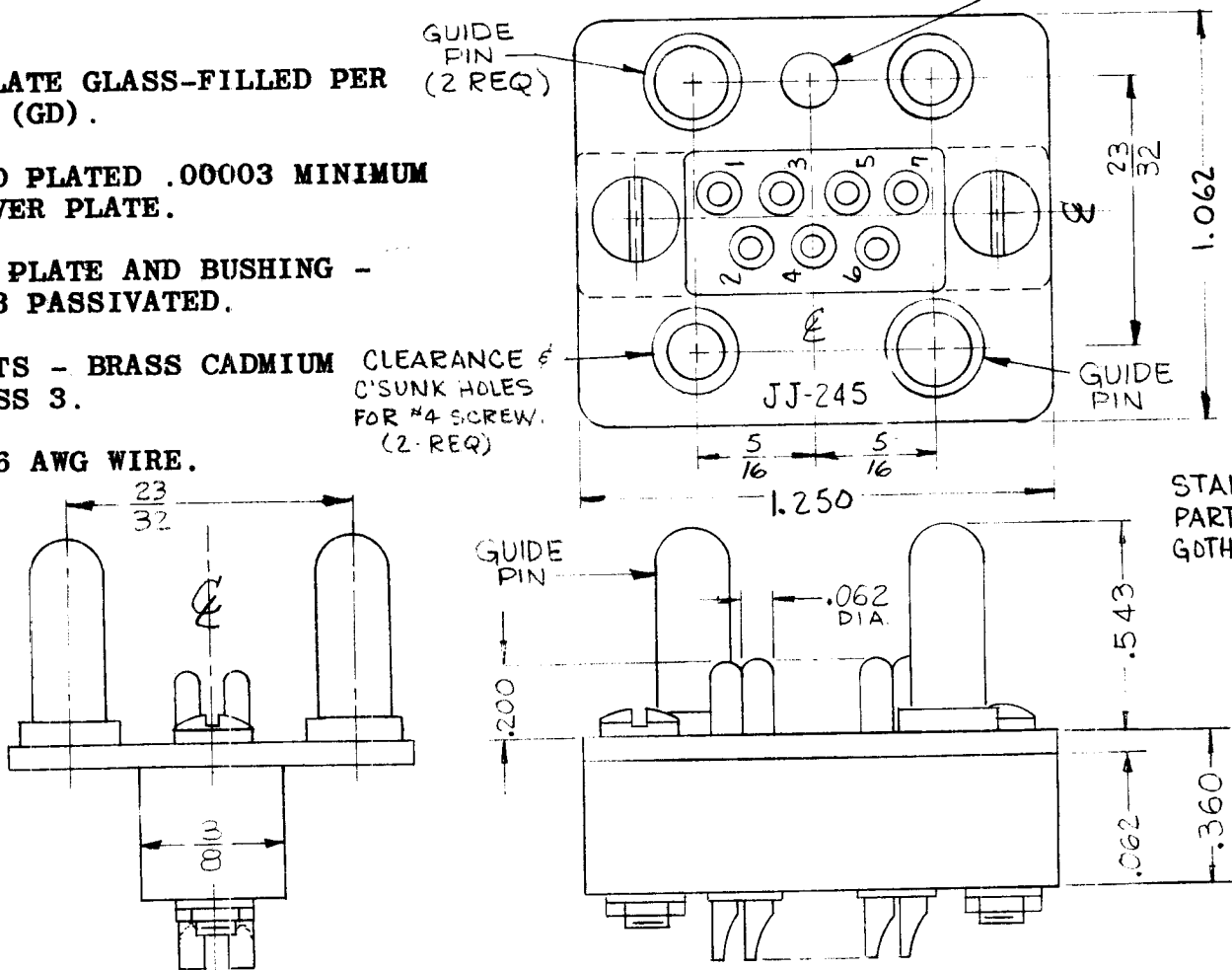
GUIDE PIN (2 REQ)

CLEARANCE FOR #6 SCREW (1-REQ)

CLEARANCE OF C'SUNK HOLES FOR #4 SCREW. (2-REQ)

STAMP TMC PART NO. 1/8 HIGH GOTHIC AS SHOWN

REF: MATES WITH JJ-216



REQ.	ITEM	PART NO.	DESCRIPTION				SYMBOL
THE TECHNICAL MATERIEL CORP. MAMARONECK, NEW YORK							
STOCK SIZE							
B	GUIDE PINS ADDED (NOTES) DIM. 23/32 WAS 3/8 C. TO C.	1-25-63	8091	<i>AG</i>	<i>AG</i>	<i>AG</i>	CONNECTOR, RECEPTACLE, MALE
A	DWG COMPLETELY REVISED	11-1-62	7537	<i>GB</i>	<i>GB</i>	<i>GB</i>	
SYM	DESCRIPTION	DATE	CH. NO.	DRAFTS	CHECKER	ENG. APP.	
UNLESS OTHERWISE SPECIFIED: DIMENSIONS ARE IN INCHES TOLERANCES ON FRAC. ± 1/64 DEC. ± .005 ANGLES ± 1/2°		SCALE: S-401-136					
		MAXIMUM ALLOWABLE TOLERANCES HAVE BEEN DETERMINED AND ANY DEVIATIONS WILL BE CAUSE FOR REJECTION. REMOVE ALL BURRS AND SHARP EDGES					
		TYPE & TEMPER		HEAT TREAT. SPEC.		DRAWN	
		FINISH & SPEC. NO.		ELEC. DES. APP.		MECH. DES. APP.	
<div style="display: flex; justify-content: space-between;"> GG RUZZO <i>AG</i> </div>							
<div style="display: flex; justify-content: space-between;"> JJ-245 B </div>							

THE CONTENTS OF THIS DRAWING ARE THE EXCLUSIVE PROPERTY OF THE TECHNICAL MATERIEL CORP. ITS UNAUTHORIZED USE OR REPRODUCTION IN WHOLE OR IN PART IS STRICTLY FORBIDDEN.

REQ. PER UNIT

16

MODEL

QDP-4A3X16

USED ON

ASS'Y. NO.

DATE

5-7-62

JJ-247

1/2 - 28 NC - 2A

LOCKWASHER INTERNAL

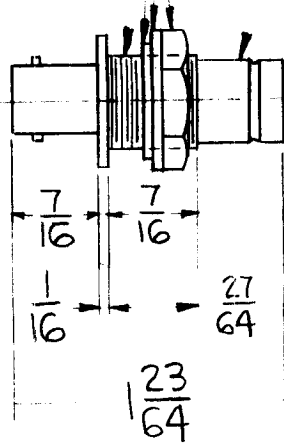
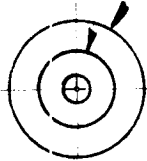
WASHER FLAT

NUT, HEX

STAMP TMC # JJ-247

11/32 DIA.

11/16 DIA.



SPECIFICATIONS:

Series - QDM

No. of Contacts - One, Each Side

Type of Contact - Female, Both

Dielectric - Teflon

ELECTRICAL DATA:

Max. Peak Opr. Volt - 500 Volts

Freq. Limit - 10,000 MCs.

Nominal Impedance - 50 Ohms

MATING ACCOMMODATIONS:

Type - BNC

MATERIAL:

External Parts - Brass

Contact - Beryllium Copper

Gasket -

FINISH:

External Parts - Silver Plate, Rhodium Flash

Contact - Silver Plate, Gold Flash

SYM	DESCRIPTION	DATE	CH. NO.	DRAFTS	CHECKER	ENG. APP.	REQ.	ITEM	PART NO.	PRITCHARD	DESCRIPTION	SYMBOL		
										THE TECHNICAL MATERIEL CORP. MAMARONECK, NEW YORK CONNECTOR, RECEPTACLE "QDM" - BNC				
							STOCK SIZE							
							MATERIAL							
UNLESS OTHERWISE SPECIFIED: DIMENSIONS ARE IN INCHES TOLERANCES ON FRAC. ± 1/64 DEC. ± .005 ANGLES ± 1/2°		SCALE: S-401-70-2600									R. Turchin			
		MAXIMUM ALLOWABLE TOLERANCES HAVE BEEN DETERMINED AND ANY DEVIATIONS WILL BE CAUSE FOR REJECTION. REMOVE ALL BURRS AND SHARP EDGES					TYPE & TEMPER		HEATTREAT. SPEC.		DRAWN		CHECKED	FINAL APPROVAL
							FINISH & SPEC. NO.		ELEC. DES. APP.		MECH. DES. APP.		JJ-247	

THE CONTENTS OF THIS DRAWING ARE THE EXCLUSIVE PROPERTY OF THE TECHNICAL MATERIEL CORP. ITS UNAUTHORIZED USE OR REPRODUCTION IN WHOLE OR IN PART IS STRICTLY FORBIDDEN.

REQ. PER UNIT

MODEL

USED ON

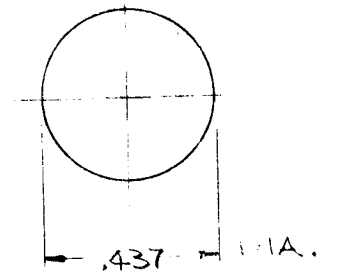
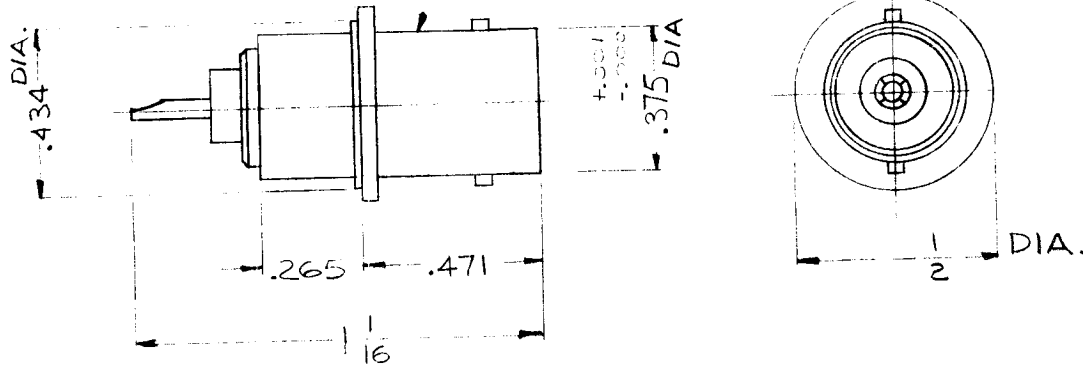
ASS'Y. NO.

DATE

5-29-62

JJ-249

STAMP TMC #JJ-249, 1/16 HIGH, GOTHIC



MOUNTING DETAIL

SPECIFICATIONS:

Series - B N C
 No. of Contacts - One(1)
 Type of Contact - Female
 Dielectric - Teflon

ELECTRICAL DATA:

Max. Peak Opr. Volt - 500 Volts
 Freq. Limit - 10,000 MCs.
 Nominal Impedance - 50 Ohms

MATING ACCOMMODATIONS:

Type - Adaptor; Solder

MATERIAL:

External Parts - Brass
 Contact - Beryllium Copper
 Gasket - None

FINISH:

External Parts - Silver Plate and Rhodium Flash
 Contact - Silver Plate, Gold Flash

							REQ.	ITEM	PART NO.	DESCRIPTION	SYMBOL	
										THE TECHNICAL MATERIEL CORP.		
							STOCK SIZE			MAMARONECK, NEW YORK		
							SEE NOTE			RECEPTACLE, ADAPTOR,		
							MATERIAL			SOLDER TYPE (SERIES BNC)		
SYM	DESCRIPTION	DATE	CH. NO.	DRAFTS	CHECKER	ENG. APP.				G.S.		
UNLESS OTHERWISE SPECIFIED:		SCALE: S401-70 (2605)								5-29-62	<i>[Signature]</i>	<i>[Signature]</i>
DIMENSIONS ARE IN INCHES		MAXIMUM ALLOWABLE TOLERANCES HAVE BEEN DETERMINED AND ANY DEVIATIONS WILL BE CAUSE FOR REJECTION.					TYPE & TEMPER	HEATTREAT. SPEC.			DRAWN	CHECKED
TOLERANCES ON		REMOVE ALL BURRS AND SHARP EDGES					SEE NOTE					
FRAC ± 1/64 DEC. ± .005 ANGLES ± 1/2°							FINISH & SPEC. NO.				ELEC. DES. APP.	MECH. DES. APP.
											JJ-249	

THE CONTENTS OF THIS DRAWING ARE THE EXCLUSIVE PROPERTY OF THE TECHNICAL MATERIEL CORP. ITS UNAUTHORIZED USE OR REPRODUCTION IN WHOLE OR IN PART IS STRICTLY FORBIDDEN.

REQ. PER UNIT

USED ON

MODEL

ASS'Y. NO.

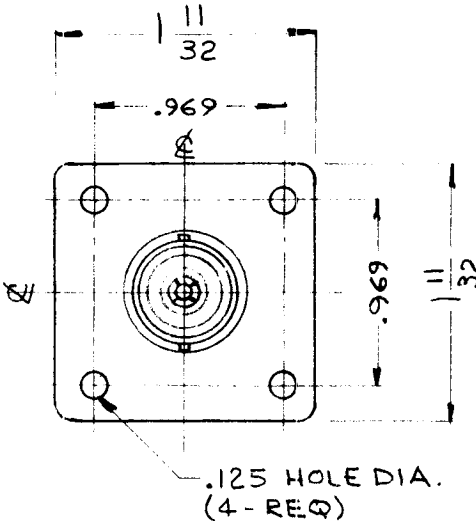
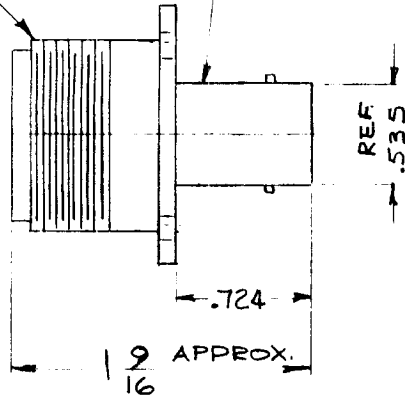
DATE

5-31-62

JJ-251

1"-20 THD
CL-2

STAMP TMC
PART NO. JJ-251,
1/16 HIGH, GOTHIC



.125 HOLE DIA.
(4-REQ)

41 DIA
64

MOUNTING DETAIL

SPECIFICATIONS:

Series - C
No. of Contacts - One (Each End)
Type of Contact - Female
Dielectric - Teflon

ELECTRICAL DATA:

Max. Peak Opr. Volt - 15,000 Volts
Freq. Limit - 10,000 MCs.
Nominal Impedance - 50 Ohms

MATING ACCOMMODATIONS:

Type - UHF (L)

MATERIAL:

External Parts - Brass
Contact - Beryllium Copper
Gasket - None

FINISH:

External Parts - Silver Plate and Rhodium Flash
Contact - Silver Plate, Gold Flash

REQ.	ITEM	PART NO.	DESCRIPTION	SYMBOL								
			THE TECHNICAL MATERIEL CORP. MAMARONECK, NEW YORK									
		SEE NOTE	ADAPTOR, CONNECTOR									
			SERIES "UHF" TO "C"									
SYM	DESCRIPTION	DATE	CH. NO.	DRAFTS	CHECKER	ENG. APP.	MATERIAL	TYPE & TEMPER	HEATTREAT. SPEC.	DRAWN	CHECKED	FINAL APPROVAL
	UNLESS OTHERWISE SPECIFIED: DIMENSIONS ARE IN INCHES TOLERANCES ON FRAC. ± 1/64 DEC. ± .005 ANGLES ± 1/2°						SCALE: 5401-70(2408)	SEE NOTE		G.S.	<i>[Signature]</i>	<i>[Signature]</i>
							MAXIMUM ALLOWABLE TOLERANCES HAVE BEEN DETERMINED AND ANY DEVIATIONS WILL BE CAUSE FOR REJECTION. REMOVE ALL BURRS AND SHARP EDGES	SEE NOTE			<i>[Signature]</i>	JJ-251

THE CONTENTS OF THIS DRAWING ARE THE EXCLUSIVE PROPERTY OF THE TECHNICAL MATERIEL CORP. ITS UNAUTHORIZED USE OR REPRODUCTION IN WHOLE OR IN PART IS STRICTLY FORBIDDEN.

REQ. PER UNIT

USED ON

MODEL

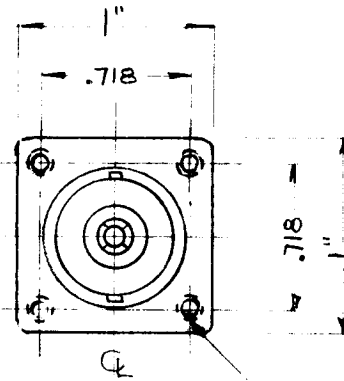
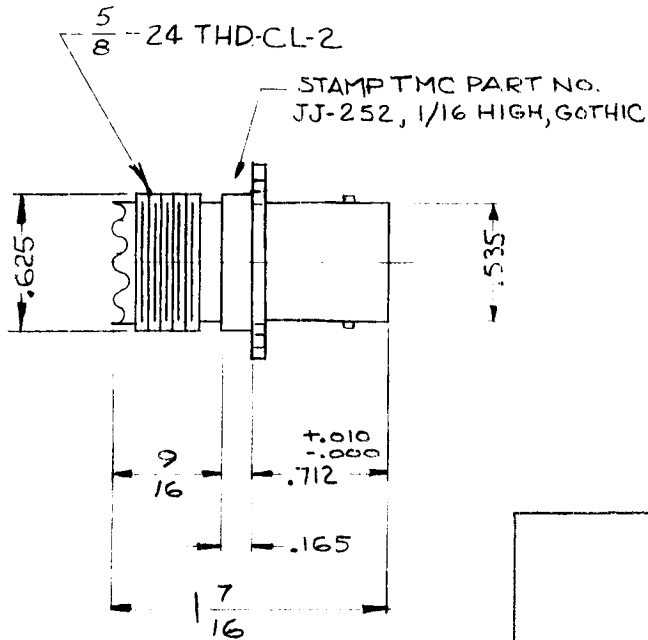
ASS'Y. NO.

DATE

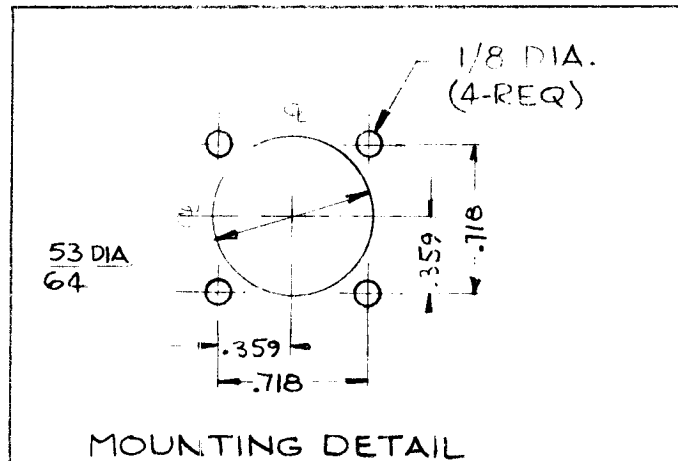
5-31-62

JJ-252

A



DE & TP 4-40 (4 HOLES REQ)



SPECIFICATIONS:

Series - C
 No. of Contacts - One (Each End)
 Type of Contact - Female
 Dielectric - Teflon

ELECTRICAL DATA:

Max. Peak Opr. Volt -
 Freq. Limit -
 Nominal Impedance -

MATING ACCOMMODATIONS:

Type - UHF

MATERIAL:

External Parts - Brass
 Contact - Beryllium Copper
 Gasket - None

FINISH:

External Parts - Silver Plate and Rhodium Flash
 Contact - Silver Plate, Gold Flash

REQ.	ITEM	PART NO.	DESCRIPTION				SYMBOL		
			THE TECHNICAL MATERIEL CORP. MAMARONECK, NEW YORK						
			ADAPTOR, CONNECTOR						
			SERIES "UHF" TO "C"						
A	.625 WAS .812 4-40 HOLE WAS 1/8 MTG DETAIL ISOLATE	4-12-66 16085	UFW	QC/S	MAF	SEE NOTE			
SYM	DESCRIPTION	DATE	CH. NO.	DRAFTS	CHECKER	ENG. APP.			
UNLESS OTHERWISE SPECIFIED: DIMENSIONS ARE IN INCHES		SCALE: S401-70 (2409)		G.P.					
TOLERANCES ON		MAXIMUM ALLOWABLE TOLERANCES HAVE BEEN DETERMINED AND ANY DEVIATIONS WILL BE CAUSE FOR REJECTION. REMOVE ALL BURRS AND SHARP EDGES		TYPE & TEMPER		HEATTREAT. SPEC.	DRAWN	CHECKED	FINAL APPROVAL
FRAC. ± 1/64 DEC. ± .005 ANGLES ± 1/2°				SEE NOTE					
				FINISH & SPEC. NO.		ELEC. DES. APP.	MECH. DES. APP.	JJ-252	A

THE CONTENTS OF THIS DRAWING ARE THE EXCLUSIVE PROPERTY OF THE TECHNICAL MATERIEL CORP. ITS UNAUTHORIZED USE OR REPRODUCTION IN WHOLE OR IN PART IS STRICTLY FORBIDDEN.

REQ. PER UNIT

MODEL

USED ON

ASS'Y. NO.

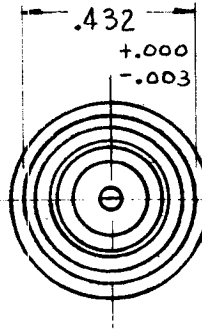
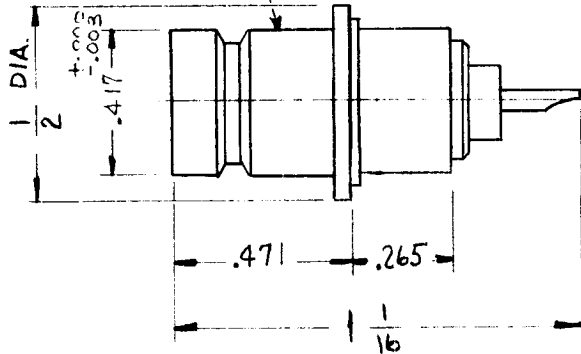
DATE

JJ-253

B

9-6-62

STAMP TMC JJ-253
1/16 HIGH GOTHIC.



SPECIFICATIONS:

Series - QD
No. of Contacts - One (1)
Type of Contact - Female
Dielectric - Teflon

ELECTRICAL DATA:

Max. Peak Opr. Volt - 500 V.
Freq. Limit - 10,000 MCS.
Nominal Impedance - 50 Ohms

MATING ACCOMMODATIONS:

Type - Adaptor, Solder

MATERIAL:

External Parts - Brass
Contact - Beryllium Copper
Gasket - None

FINISH:

External Parts - Silver Plate and Rhodium Flash
Contact - Silver Plate and Gold Flash

REQ.	ITEM	PART NO.	A. MARTINENGO			DESCRIPTION	SYMBOL
						THE TECHNICAL MATERIEL CORP. MAMARONECK, NEW YORK	
			STOCK SIZE			RECEPTACLE, R.F.	
B	REDRAWN & REVISED	10-9-62	7419	<i>gby</i>	<i>De</i>	"QDM" (F) TO LUG	
SYM	DESCRIPTION	DATE	CH. NO.	DRAFTS	CHECKER	ENG. APP.	MATERIAL
	UNLESS OTHERWISE SPECIFIED: DIMENSIONS ARE IN INCHES TOLERANCES ON FRAC. ± 1/64 DEC. ± .005 ANGLES ± 1/2°						
		SCALE: S401-70-2622					
		MAXIMUM ALLOWABLE TOLERANCES HAVE BEEN DETERMINED AND ANY DEVIATIONS WILL BE CAUSE FOR REJECTION. REMOVE ALL BURRS AND SHARP EDGES					
		TYPE & TEMPER	HEAT TREAT. SPEC.	DRAWN	CHECKED	FINAL APPROVAL	
				<i>gby</i>	<i>De</i>	<i>De</i>	
		FINISH & SPEC. NO.	ELEC. DES. APP.	MECH. DES. APP.	JJ-253		B

THE CONTENTS OF THIS DRAWING ARE THE EXCLUSIVE PROPERTY OF THE TECHNICAL MATERIEL CORP. ITS UNAUTHORIZED USE FOR REPRODUCTION IN WHOLE OR IN PART IS STRICTLY FORBIDDEN.

REQ. PER UNIT

2

MODEL

SW-309

USED ON

ASS'Y. NO.

DATE

1-17-63

JJ-254

A

SPECIFICATIONS:

Series - N
 No. of Contacts - ONE
 Type of Contact - FEMALE
 Dielectric - TEFLON

ELECTRICAL DATA:

Max. Peak Opr. Volt - 1500 VOLTS
 Freq. Limit - 10,000 MCS
 Nominal Impedance - 50 OHMS

CABLE ACCOMMODATIONS:

Type - NONE

MATING ACCOMMODATIONS:

Type - N

MATERIAL:

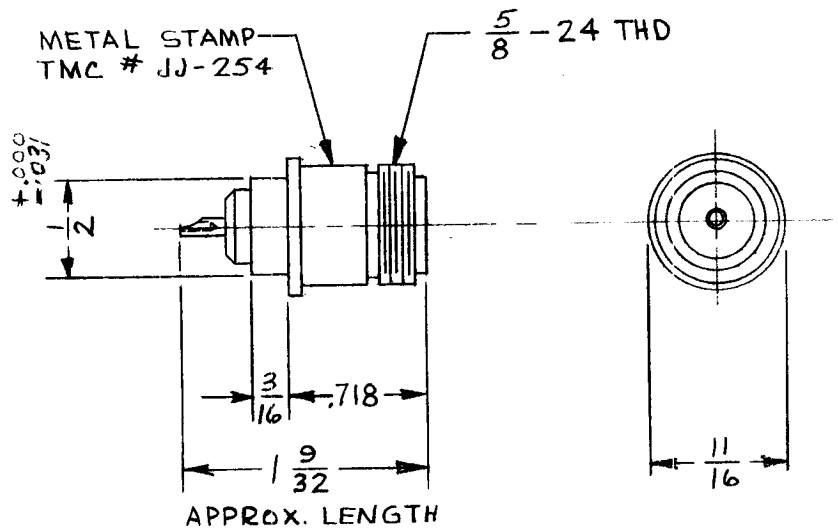
External Parts - BRASS
 Contact - BERYLLIUM COPPER
 Gasket - NONE

FINISH:

External Parts - SILVER PLATE,
 RHODIUM FLASH
 Contact - SILVER PLATE,
 GOLD FLASH

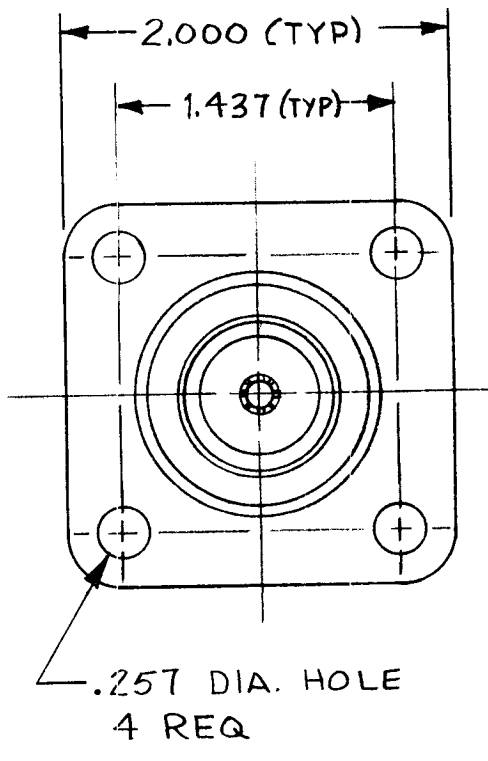
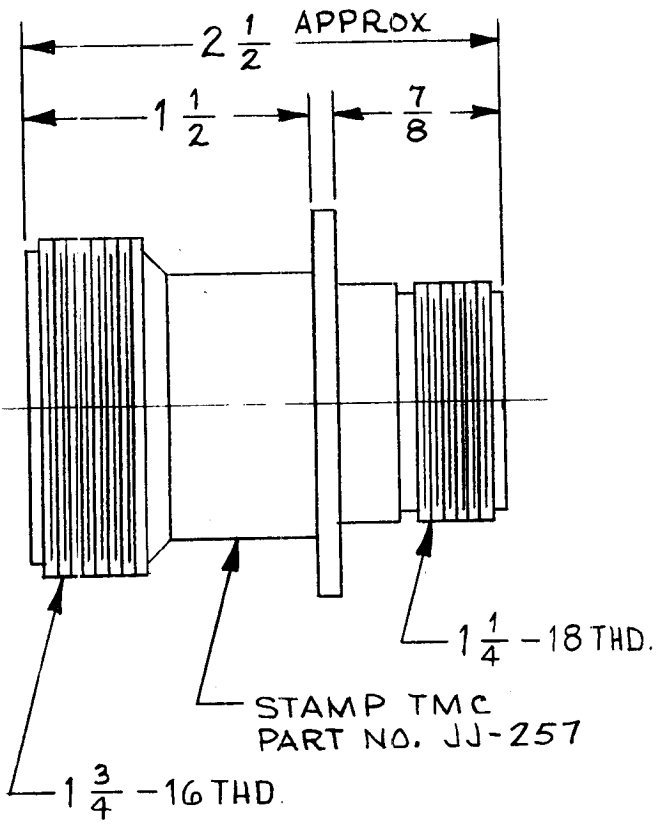
PANEL:

Max. Thickness - NONE



							REQ. ITEM	PART NO.	MARTINENGO DESCRIPTION	SYMBOL
									THE TECHNICAL MATERIEL CORP. MAMARONECK. NEW YORK	
							STOCK SIZE		CONNECTOR RECEPTACLE	
							SEE NOTES		N TO SOLDER CUP (SPECIAL)	
							MATERIAL		TANTILLO	
							TYPE & TEMPER		DRAWN	CHECKED
							HEAT TREAT. SPEC.		FINAL APPROVAL	
							SEE NOTES			JJ-254
							FINISH & SPEC. NO.		ELEC. DES. APP.	MECH. DES. APP.
							S 401-70-2698			A

REQ. PER UNIT	USED ON			JJ-257	Ø
	MODEL	ASS'Y. NO.	DATE		



SPECIFICATIONS:
 Series - LC
 No. of Contacts - ONE (1)
 Type of Contact - FEMALE
 Dielectric - TEFLON

ELECTRICAL DATA:
 Max. Peak Opr. Volt -
 Freq. Limit -
 Nominal Impedance -

CABLE ACCOMMODATIONS:
 Type - NONE

MATING ACCOMMODATIONS:
 Type - LC (L)

MATERIAL:
 External Parts -
 Contact -
 Gasket -

FINISH:
 External Parts -
 Contact -

PANEL:
 Max. Thickness 3/16

SYM	DESCRIPTION	DATE	CH. NO.	DRAFTS	CHECKER	ENG. APP.	REQ. ITEM	PART NO.	MARTINENG0	DESCRIPTION	SYMBOL
										THE TECHNICAL MATERIEL CORP. MAMARONECK, NEW YORK	
										CONNECTOR, ADAPTER	
										LC TO LC(L)	
										M. TANTILLO 10-3-63	
										DRAWN	CHECKED
										FINAL APPROVAL	
											JJ-257
										ELEC. DES. APP.	MECH. DES. APP.
										FINISH & SPEC. NO.	

REQ. PER UNIT	USED ON			JJ-261
	MODEL	ASS'Y. NO.	DATE	

SPECIFICATIONS:

Series - QDM
 No. of Contacts - ONE (1)
 Type of Contact - FEMALE
 Dielectric - TEFLON

ELECTRICAL DATA:

Max. Peak Opr. Volt - 500V
 Freq. Limit - 10,000 MCS
 Nominal Impedance - 50 OHMS

CABLE ACCOMMODATIONS:

Type - NONE

MATING ACCOMMODATIONS:

Type - QDM

MATERIAL:

External Parts - BRASS
 Contact - BERYLLIUM COPPER
 Gasket - SILICONE RUBBER

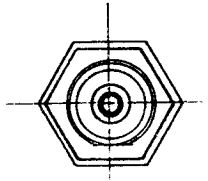
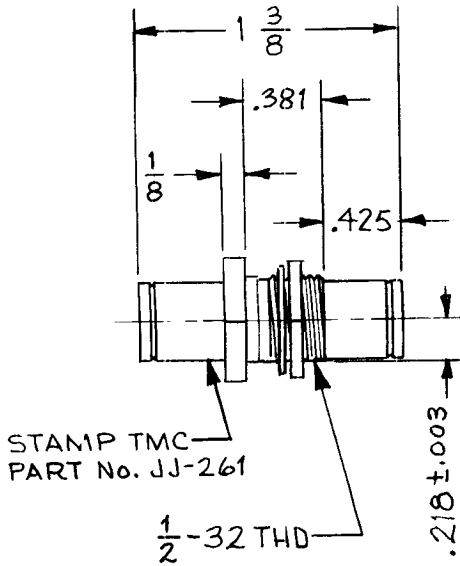
FINISH:

External Parts RHODIUM

Contact - GOLD

PANEL:

Max. Thickness 3/16



SYM	DESCRIPTION	DATE	CH. NO.	DRAFTS	CHECKER	ENG. APP.	REQ. ITEM	PART NO.	MARTINENGO DESCRIPTION	SYMBOL
									THE TECHNICAL MATERIEL CORP. MAMARONECK. NEW YORK	
								STOCK SIZE	CONNECTOR, RECEPTACLE	
								MATERIAL	BULKHEAD - QDM TO QDM	
									M. TANTILLO 9-18-63	
									DRAWN	
									CHECKED	
										BP
										JJ-261
									ELEC. DES. APP.	
									MECH. DES. APP.	
								FINISH & SPEC. NO.		

UNLESS OTHERWISE SPECIFIED DIMENSIONS ARE IN INCHES AND INCLUDE CHEMICALLY APPLIED OR PLATED FINISHES

SCALE

DECIMALS
.X ± .05
.XX ± .01
.XXX ± .005

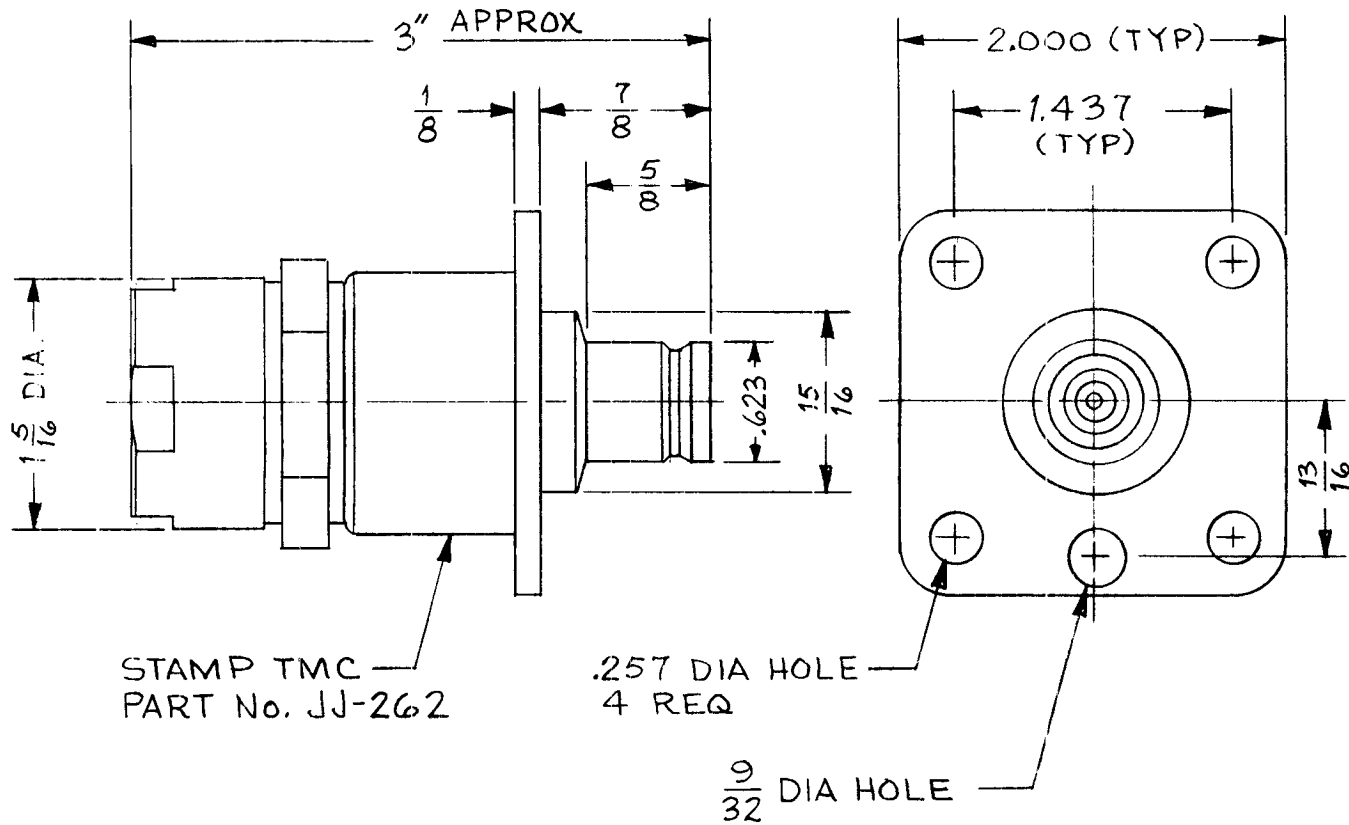
FRACTIONS
± 1/64
ANGLES
± 0° 30'

TOLERANCES

CODE S401-70-3062

9/25/63

REQ. PER UNIT	USED ON			JJ-262
	MODEL	ASS'Y. NO.	DATE	



STAMP TMC
PART No. JJ-262

.257 DIA HOLE
4 REQ

9/32 DIA HOLE

SPECIFICATIONS:

Series - QDS
No. of Contacts - ONE (1)
Type of Contact - FEMALE
Dielectric - TEFLON

ELECTRICAL DATA:

Max. Peak Opr. Volt- 5000 V
Freq. Limit - 10,000 MCS
Nominal Impedance - 50 OHMS

CABLE ACCOMMODATION:

Type - RG-17-18-164-218-219/U

MATING ACCOMMODATIONS:

Type - QDS

MATERIAL:

External Parts - BRASS
Contact - BERYLLIUM COPPER
Gasket - SILICONE RUBBER

FINISH:

External Parts - RHODIUM
Contact - GOLD

PANEL:

Max. Thickness - 3/16

REQ.	ITEM	PART NO.	MARTINENGO DESCRIPTION	SYMBOL							
			THE TECHNICAL MATERIEL CORP. MAMARONECK, NEW YORK								
			CONNECTOR, RECEPTACLE								
			QDS TO CABLE								
SYM	DESCRIPTION	DATE	CH. NO.	DRAFTS	CHECKER	ENG. APP.	MATERIAL				
UNLESS OTHERWISE SPECIFIED DIMENSIONS ARE IN INCHES AND INCLUDE CHEMICALLY APPLIED OR PLATED FINISHES							SCALE				
DECIMALS .X ± .05 .XX ± .01 .XXX ± .005	TOLERANCES	FRACTIONS ± 1/64 ANGLES ± 0° 30'	CODE	S401-70-2417							
							TYPE & TEMPER	HEAT TREAT. SPEC.	DRAWN	CHECKED	FINAL APPROVAL
							FINISH & SPEC. NO.		ELEC. DES. APP.	MECH. DES. APP.	JJ-262

REQ. PER UNIT	USED ON			JJ-263
	MODEL	ASS'Y. NO.	DATE	

SPECIFICATIONS:
 Series - QDM
 No. of Contacts - ONE (1)
 Type of Contact - FEMALE
 Dielectric - TEFLON

ELECTRICAL DATA:
 Max. Peak Opr. Volt - 500 V
 Freq. Limit - 10,000 MCS
 Nominal Impedance - 50 OHMS

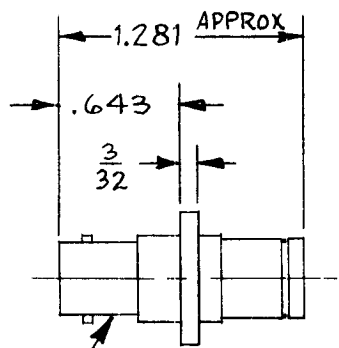
CABLE ACCOMMODATIONS:
 Type - NONE

MATING ACCOMMODATIONS:
 Type BNC

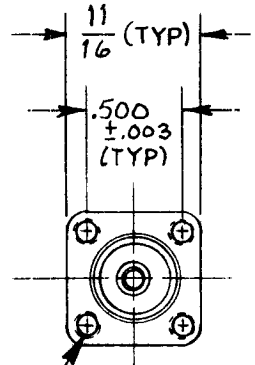
MATERIAL:
 External Parts - BRASS
 Contact - BERYLLIUM COPPER
 Gasket - NONE

FINISH:
 External Parts - RHODIUM
 Contact - GOLD

PANEL:
 Max. Thickness 3/16



STAMP TMC
PART No. JJ-263



*3-56NF-2B
4 HOLES

REQ.	ITEM	PART NO.	MARTINENGO	DESCRIPTION	SYMBOL							
			THE TECHNICAL MATERIEL CORP. MAMARONECK, NEW YORK									
			CONNECTOR, RECEPTACLE									
			QDM (F) TO BNC (F)									
SYM	DESCRIPTION	DATE	CH. NO.	DRAFTS	CHECKER	ENG. APP.	MATERIAL	M.TANTILLO 9-18-63	9/25/63	BP		
UNLESS OTHERWISE SPECIFIED DIMENSIONS ARE IN INCHES AND INCLUDE CHEMICALLY APPLIED OR PLATED FINISHES		SCALE						TYPE & TEMPER	HEAT TREAT. SPEC.	DRAWN	CHECKED	FINAL APPROVAL
DECIMALS .X ± .05 .XX ± .01 .XXX ± .005	FRACTIONS ± 1/64 ANGLES ± 0° 30'	TOLERANCES	CODE	S401-70-3212					FINISH & SPEC. NO.	ELEC. DES. APP.	MECH. DES. APP.	JJ-263

STANDARD DRAWING

THE CONTENTS OF THIS DRAWING ARE THE EXCLUSIVE PROPERTY OF THE TECHNICAL MATERIEL CORP. ITS UNAUTHORIZED USE FOR REPRODUCTION IN WHOLE OR IN PART IS STRICTLY FORBIDDEN.

REQ. PER UNIT
4

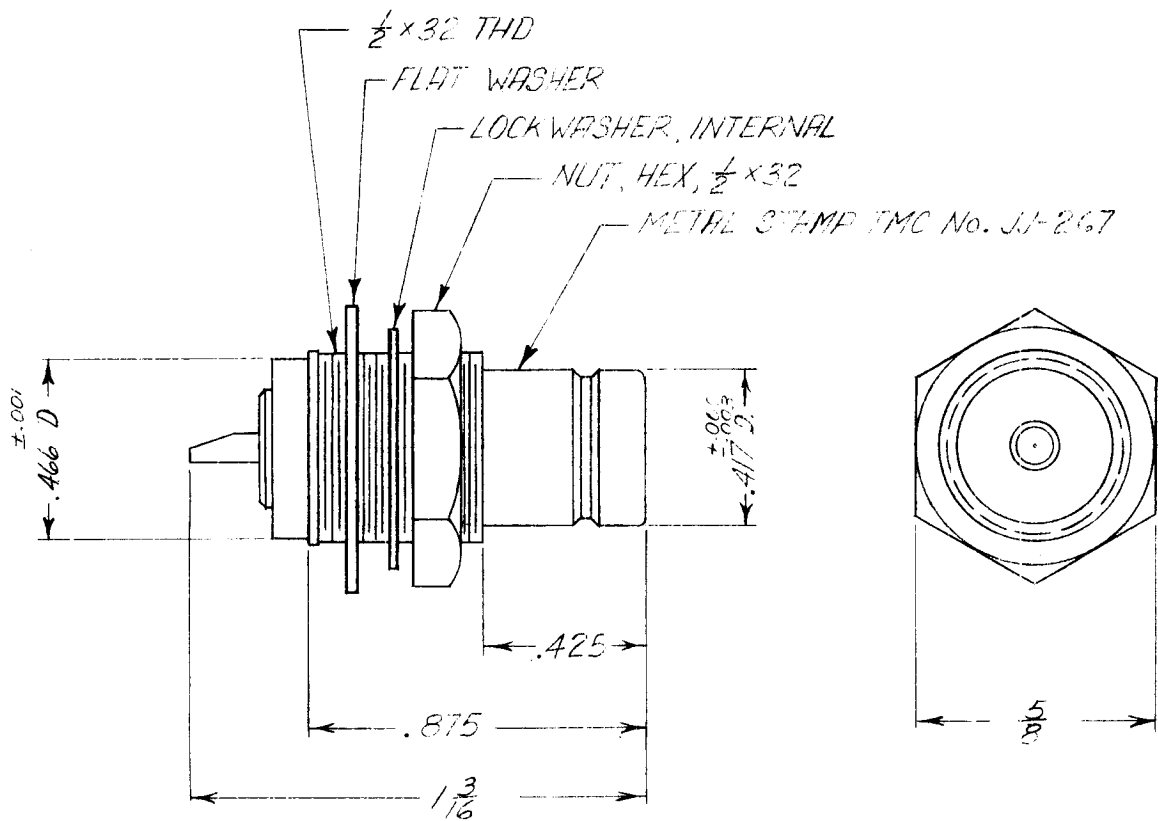
MODEL
II-108

USED ON
ASS'Y. NO.
A-3140

DATE
3-29-63

JJ-267

A



SPECIFICATIONS:

Series - QDM
No. of Contacts - One (1)
Type of Contact - Female
Dielectric - Teflon

ELECTRICAL DATA:

Max. Peak Opr. Volt - 500 V.
Freq. Limit - 10,000 MC.
Nominal Impedance - 50 Ohms

CABLE ACCOMMODATIONS:

Type -

MATING ACCOMMODATIONS:

Type - Solder Cup

MATERIAL:

External Parts - Brass
Contact - Beryllium Copper
Gasket - None

FINISH:

External Parts - Silver Plate
and Rhodium Flash
Contact - Silver Plate and
Gold Flash

PANEL:

Max. Thickness - 3/16

REQ.	ITEM	PART NO.	DESCRIPTION	SYMBOL
			Martimengo	
STOCK SIZE			THE TECHNICAL MATERIEL CORP. MAMARONECK, NEW YORK	
			CONNECTOR, RECEPTACLE	
			QDM BULKHEAD MTG.	
MATERIAL				
TYPE & TEMPER				
HEAT TREAT. SPEC.				
FINISH & SPEC. NO.				
ELEC. DES. APP.				
MECH. DES. APP.				

SYM	DESCRIPTION	DATE	CH. NO.	DRAFTS	CHECKER	ENG. APP.
A	ON TITLE, "QDM" WAS "QDS"	4-23-63	8839		JMZ	WLB

UNLESS OTHERWISE SPECIFIED DIMENSIONS ARE IN INCHES AND INCLUDE CHEMICALLY APPLIED OR PLATED FINISHES		SCALE	2:1
DECIMALS .X ± .05 .XX ± .01 .XXX ± .005	TOLERANCES	FRACTIONS ± 1/64 ANGLES, ± 0° 30'	CODE S-401-70 (2936)

THE CONTENTS OF THIS DRAWING ARE THE EXCLUSIVE PROPERTY OF THE TECHNICAL MATERIEL CORP. ITS UNAUTHORIZED USE FOR REPRODUCTION IN WHOLE OR IN PART IS STRICTLY FORBIDDEN.

REQ. PER UNIT

USED ON

MODEL

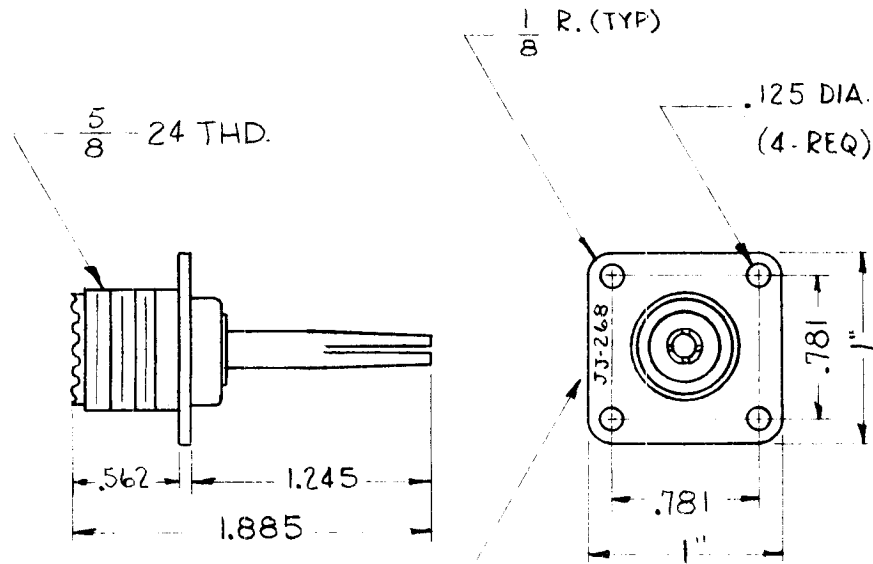
ASS'Y. NO.

DATE

TCA-85/UHF

11-2-62

JJ-268



METAL STAMP TMC
PART NO. 1/16 HIGH
GOTHIC.

SPECIFICATIONS:

Series - UHF
No. of Contacts - One (1)
Type of Contact - Female
Dielectric - Teflon

ELECTRICAL DATA:

Max. Peak Opr. Volt -
Freq. Limit -
Nominal Impedance -

MATING ACCOMMODATIONS:

Type - TCA-85/

MATERIAL:

External Parts - Brass
Contact - Beryllium Copper
Gasket - None

FINISH:

External Parts - Silver Plate and Rhodium
Flash
Contact - Silver Plate and Gold Flash

REQ.	ITEM	PART NO.	A. MARTINEGO			DESCRIPTION	SYMBOL
						THE TECHNICAL MATERIEL CORP. MAMARONECK. NEW YORK	
			STOCK SIZE			RECEPTACLE CONNECTOR	
			MATERIAL			"UHF" SERIES	
SYM	DESCRIPTION	DATE	CH. NO.	DRAFTS	CHECKER	ENG. APP.	
UNLESS OTHERWISE SPECIFIED DIMENSIONS ARE IN INCHES AND INCLUDE CHEMICALLY APPLIED OR PLATED FINISHES		SCALE					
DECIMALS .X ± .05 .XX ± .01 .XXX ± .005		FRACTIONS ± 1/64 ANGLES, ± 0° 30'		TOLERANCES		CODE	
				TYPE & TEMPER		HEAT TREAT. SPEC.	DRAWN
				FINISH & SPEC. NO.		ELEC. DES. APP.	MECH. DES. APP.
							JJ-268

REQ. PER UNIT	USED ON			JJ-269
	MODEL	ASSY. NO.	DATE	

SPECIFICATIONS:

Series - C
 No. of Contacts- ONE (1)
 Type of Contact - FEMALE & MALE
 Dielectric - TEFLON

ELECTRICAL DATA:

Max. Peak Opr. Volt - 1500 V
 Freq. Limit - 10,000 MCS
 Nominal Impedance - 50 OHMS

CABLE ACCOMMODATIONS:

Type - NONE

MATING ACCOMMODATIONS:

Type - TCA-85/C

MATERIAL:

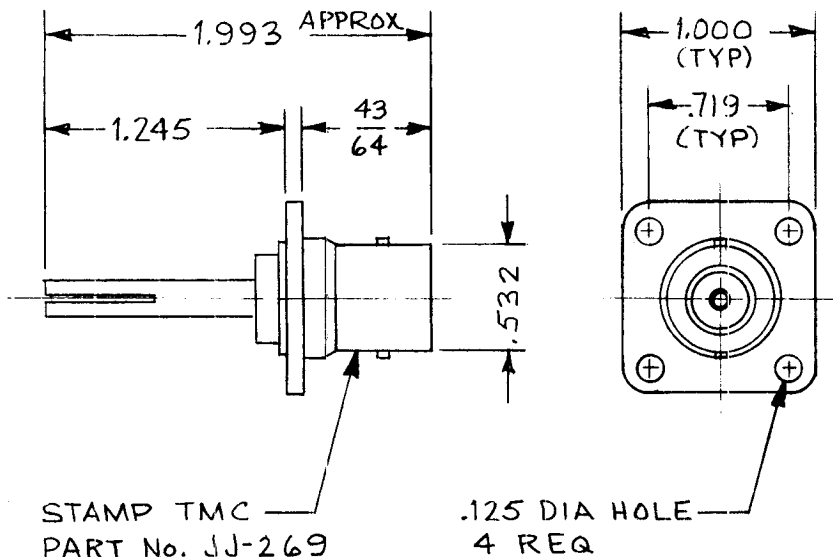
External Parts - BRASS
 Contact - BERYLLIUM COPPER
 Gasket - NONE

FINISH:

External Parts - RHODIUM
 Contact - GOLD

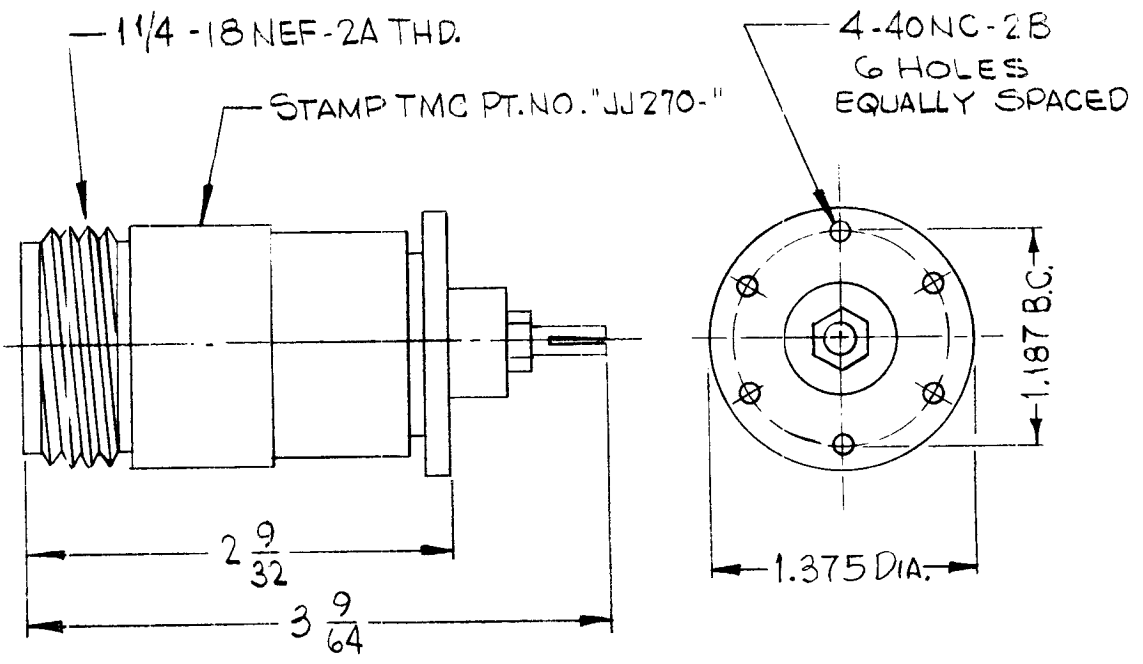
PANEL:

Max. Thickness - 3/16



SYM	DESCRIPTION	DATE	CH. NO.	DRAFTS	CHECKER	ENG. APP.	REQ. ITEM	PART NO.	MARTINENGO DESCRIPTION	SYMBOL		
									THE TECHNICAL MATERIEL CORP. MAMARONECK, NEW YORK			
								STOCK SIZE	CONNECTOR, RECEPTACLE			
								MATERIAL	"C" SERIES			
UNLESS OTHERWISE SPECIFIED DIMENSIONS ARE IN INCHES AND INCLUDE CHEMICALLY APPLIED OR PLATED FINISHES		SCALE						M. TANTILLO 9-20-63	9/25/63	BP		
DECIMALS .X ± .05 .XX ± .01 .XXX ± .005	TOLERANCES	FRACTIONS ± 1/64 ANGLES ± 0° 30'	CODE					TYPE & TEMPER	HEAT TREAT. SPEC.	DRAWN	CHECKED	FINAL APPROVAL
			S401-70-2944									JJ-269
								FINISH & SPEC. NO.	ELEC. DES. APP.	MECH. DES. APP.		

REQ. PER UNIT	USED ON		
	MODEL	ASSY. NO.	DATE
			JJ 270



SPECIFICATIONS

SERIES : LT
 NO. OF CONTACTS : ONE (1)
 TYPE OF CONTACT : FEMALE
 DIELECTRIC : TEFLON

ELECTRICAL DATA :
 MAX. PEAK OPR. VOLTAGE : 5,000 V
 FREQ. LIMIT : 1000 MHZ
 NOMINAL IMPEDANCE : 50 OHMS

MATERIAL : 1,000 MHZ
 EXTERNAL PARTS : BRASS
 CONTACTS : BERYLLIUM COPPER

FINISH :
 EXTERNAL PARTS : SILVER PLATE & RHODIUM FLASH
 CONTACTS : SILVER PLATE & GOLD FLASH

MATING ACCOMODATIONS :
 TYPE : TCA-85/LT ONLY

							REQ. ITEM	PART NO.	MARTINENGO	DESCRIPTION	SYMBOL			
✓	ORIGINAL RELEASE	1/14/67							THE TECHNICAL MATERIEL CORP. MAMARONECK. NEW YORK					
X ₁	ELECT. DATA: UPDATED	9-20-67		ENJ				STOCK SIZE	RECEPTACLE, CONNECTOR					
X	EXP. RELEASE	2-20-67		WFW				SEE SPECS.	TCA-85/LT					
SYM	DESCRIPTION	DATE	CH. NO.	DRAFTS	CHECKER	ENG. APP.		MATERIAL						
UNLESS OTHERWISE SPECIFIED DIMENSIONS ARE IN INCHES AND INCLUDE CHEMICALLY APPLIED OR PLATED FINISHES							SCALE			3-22-66	H. AUSTIN	SG	SPM 12/1/67	
									TYPE & TEMPER	HEAT TREAT. SPEC.	DRAWN	CHECKED	FINAL APPROVAL	
									SEE SPECS.				JJ 270	φ
									FINISH & SPEC. NO.	ELEC. DES. APP.	MECH. DES. APP.			

THE CONTENTS OF THIS DRAWING ARE THE EXCLUSIVE PROPERTY OF THE TECHNICAL MATERIEL CORP. ITS UNAUTHORIZED USE FOR REPRCDUCTION IN WHOLE OR IN PART IS STRICTLY FORBIDDEN.

REQ. PER UNIT

USED ON

MODEL

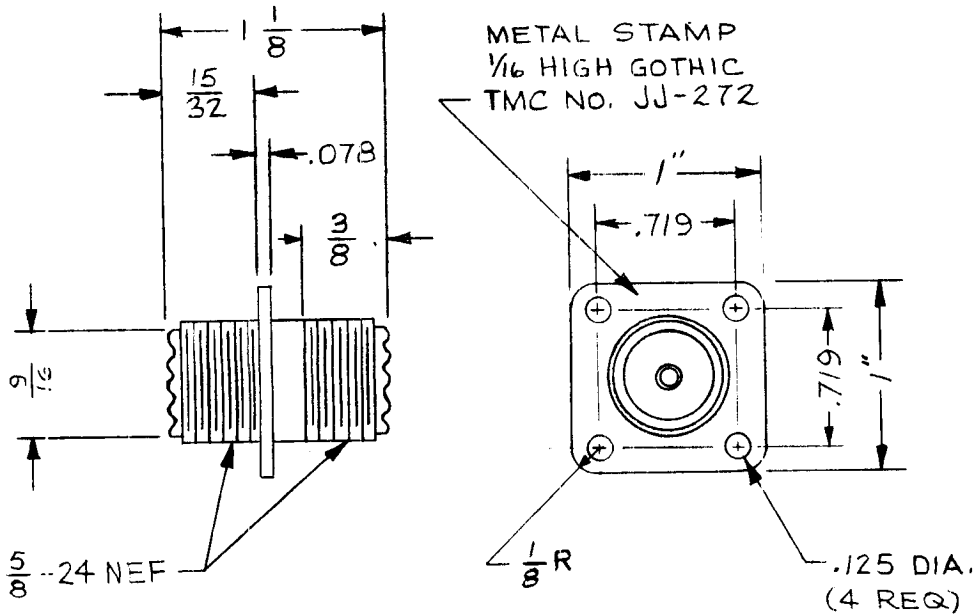
ASS'Y. NO.

DATE

JPP-7A7X11

10-30-62

JJ-272



SPECIFICATIONS:

Series - UHF
 No. of Contacts - ONE (1)
 Type of Contact - FEMALE
 Dielectric - TEFLON

ELECTRICAL DATA:

Max. Peak Opr. Volt -
 Freq. Limit -
 Nominal Impedance -

MATING ACCOMMODATIONS:

Type - UHF (FEMALE)

MATERIAL:

External Parts - BRASS
 Contact - BERYLLIUM COPPER
 Gasket -

FINISH:

External Parts - SILVER PLATE & RHODIUM FINISH
 Contact - SILVER PLATE & GOLD FLASH

REQ.	ITEM	PART NO.	MATERIAL	DESCRIPTION	SYMBOL
				THE TECHNICAL MATERIEL CORP. MAMARONECK, NEW YORK	
			STOCK SIZE		
			See Note	CONNECTOR, RECEPTACLE	
			MATERIAL	UHF (F) TO UHF (F)	
				M. TANTILLO	
			TYPE & TEMPER	CHECKED	FINAL APPROVAL
			HEAT TREAT. SPEC.		
			See Note		JJ-272
			FINISH & SPEC. NO.		

SYM	DESCRIPTION	DATE	CH. NO.	DRAFTS	CHECKER	ENG. APP.
	UNLESS OTHERWISE SPECIFIED DIMENSIONS ARE IN INCHES AND INCLUDE CHEMICALLY APPLIED OR PLATED FINISHES	SCALE				
	TOLERANCES	FRACTIONS	CODE			
	.X ± .05 .XX ± .01 .XXX ± .005	± 1/64 ANGLES ± 0° 30'	S401-70 (94-1)			

THE CONTENTS OF THIS DRAWING ARE THE EXCLUSIVE PROPERTY OF THE TECHNICAL MATERIEL CORP. ITS UNAUTHORIZED USE FOR REPRODUCTION IN WHOLE OR IN PART IS STRICTLY FORBIDDEN.

REQ. PER UNIT

16

USED ON

MODEL

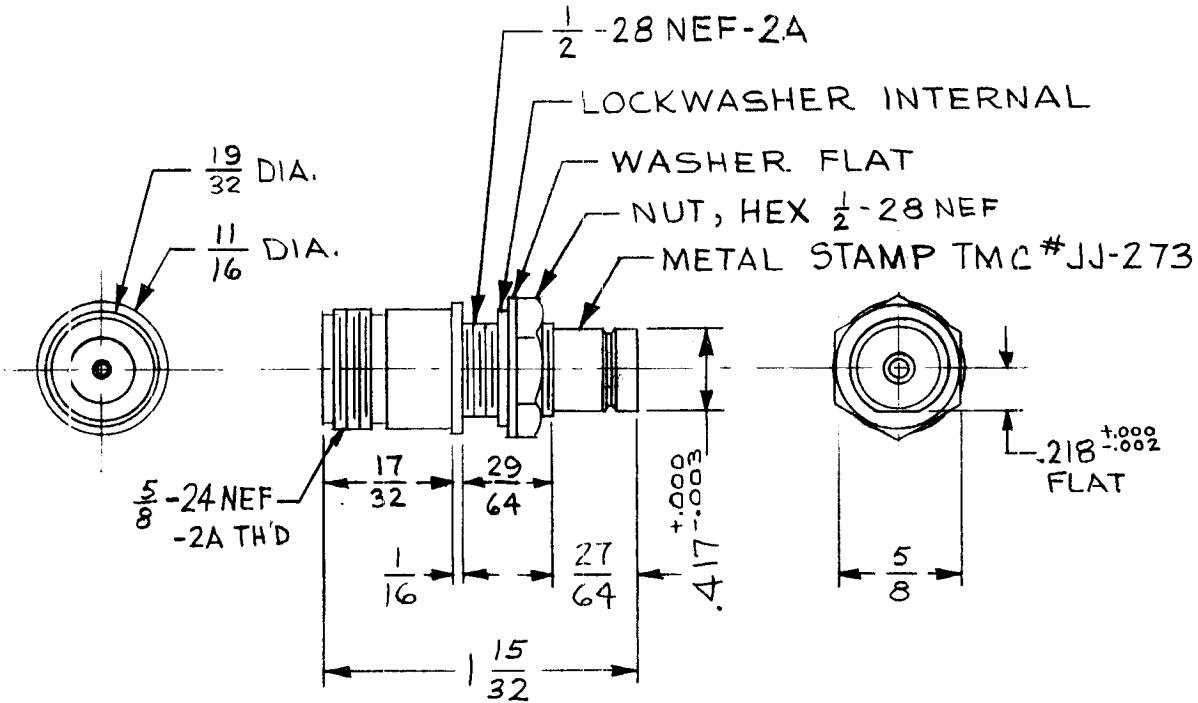
QDP-3A6X16

ASS'Y. NO.

DATE

12-14-62

JJ-273



SPECIFICATIONS:

Series - QDM and N
 No. of Contacts - One, Each Side
 Type of Contact - Female, Both Dielectric - Teflon

ELECTRICAL DATA:

Max. Peak Opr. Volt - 500 Volts
 Freq. Limit - 10,000 MCs.
 Nominal Impedance - 50 Ohms

MATING ACCOMMODATIONS:

Type - QDM and N
 CABLE ACCOMMODATIONS: NONE

MATERIAL:

External Parts - Brass
 Contact - Beryllium Copper
 Gasket - None

FINISH:

External Parts - Silver Plate, Rhodium Flash
 Contact - Silver Plate, Gold Flash

REQ.	ITEM	PART NO.	MARTINENGO	DESCRIPTION	SYMBOL
			THE TECHNICAL MATERIEL CORP. MAMARONECK, NEW YORK		
			CONNECTION RECEPTACLE		
			"QDM" TO "N"		
			M. TANTILLO	<i>[Signature]</i>	
			TYPE & TEMPER	HEAT TREAT. SPEC.	DRAWN
			SEE NOTE		CHECKED
			FINISH & SPEC. NO.	ELEC. DES. APP.	MECH. DES. APP.
					JJ-273

THE CONTENTS OF THIS DRAWING ARE THE EXCLUSIVE PROPERTY OF THE TECHNICAL MATERIEL CORP. ITS UNAUTHORIZED USE FOR REPRODUCTION IN WHOLE OR IN PART IS STRICTLY FORBIDDEN.

REQ.
PER
UNIT

USED ON

MODEL

ASS'Y. NO.

DATE

1-11-63

JJ-275

A

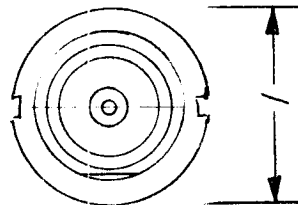
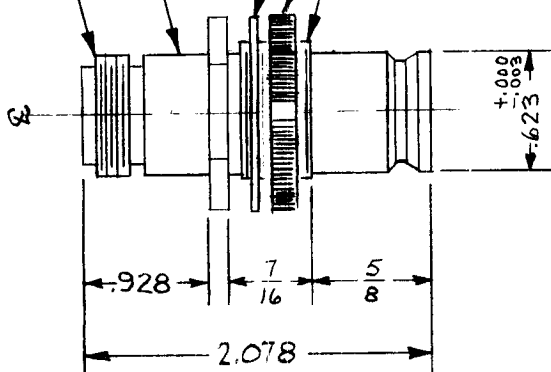
METAL STAMP
TMC #JJ-275

$\frac{5}{8}$ -24 THD

INT. LOCKWASHER

$\frac{3}{4}$ -20 THD

ROUND KNURL NUT
(NOTCHED 2 PLACES)
180° APART



SPECIFICATIONS:

TYPE- Adapter

No. of Contacts - One (1)

Type of Contact - Female (2)

Dielectric - Nylon

ELECTRICAL DATA:

Max. Peak Opr. Volt - 1500

Freq. Limit - 10,000 mcs

Nominal Impedance - 50

MATING ACCOMMODATIONS:

To QDS "N" Series

MATERIAL:

External Parts - Brass

Contact - Beryllium Copper

Gasket - None

FINISH:

External Parts - Silver Plate
Rhodium Flash

Contact - Silver Plate
Gold Flash

							REQ.	ITEM	PART NO.	DESCRIPTION	SYMBOL			
									THE TECHNICAL MATERIEL CORP. MAMARONECK, NEW YORK					
									STOCK SIZE					
									CONNECTOR, RECEPTACLE ADAPTER					
									MATERIAL					
A	MATING ACC. WAS "N" SERIES KNURL NUT WAS HEXAGON				DATE	CH. NO.	DRAFTS	CHECKER	ENG. APP.					
SYM	DESCRIPTION				DATE	CH. NO.	DRAFTS	CHECKER	ENG. APP.					
UNLESS OTHERWISE SPECIFIED DIMENSIONS ARE IN INCHES AND INCLUDE CHEMICALLY APPLIED OR PLATED FINISHES					SCALE		TANTILLO							
DECIMALS: .X ± .05 .XX ± .01 .XXX ± .005					FRACTIONS ± 1/64 ANGLES ± 0° 30'		CODE		TYPE & TEMPER		HEAT TREAT. SPEC.	DRAWN	CHECKED	FINAL APPROVAL
TOLERANCES									FINISH & SPEC. NO.		ELEC. DES. APP.	MECH. DES. APP.	JJ-275	A

THE CONTENTS OF THIS DRAWING ARE THE EXCLUSIVE PROPERTY OF THE TECHNICAL MATERIEL CORP. ITS UNAUTHORIZED USE FOR REPRODUCTION IN WHOLE OR IN PART IS STRICTLY FORBIDDEN.

REQ. PER UNIT

USED ON

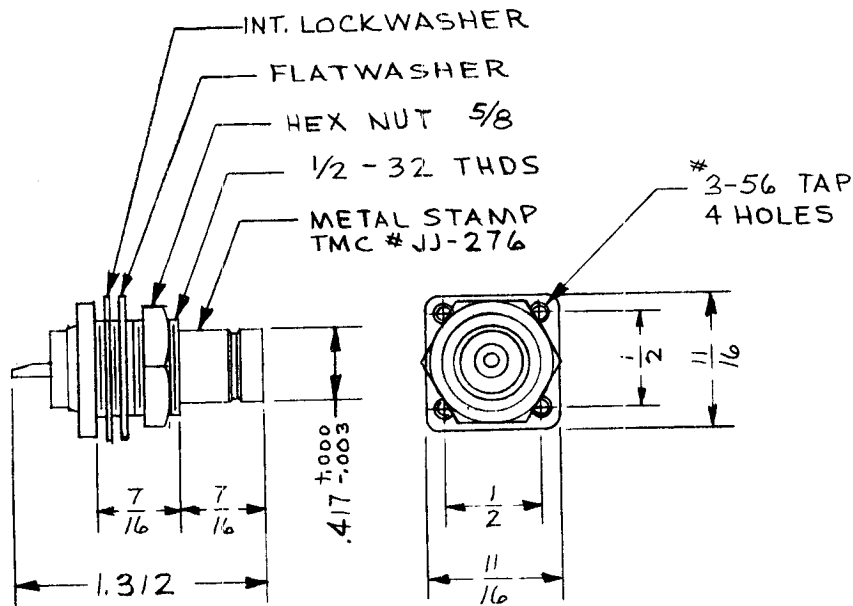
MODEL

ASS'Y. NO.

DATE

1-11-63

JJ-276



SPECIFICATIONS:

Series - QDM
 No. of Contacts - One (1)
 Type of Contact - Female
 Dielectric - Teflon

ELECTRICAL DATA:

Max. Peak Cpr. Volt - 500 V
 Freq. Limit - 10,000 mcs
 Nominal Impedance - 50

MATING ACCOMMODATIONS:

Type - Solder Cup

MATERIAL:

External Parts - Brass
 Contact - Beryllium Copper
 Gasket - None

FINISH:

External Parts - Silver Plate and Rhodium Flash
 Contact - Silver Plate, Gold Flash

SYM	DESCRIPTION	DATE	CH. NO.	DRAFTS	CHECKER	ENG. APP.	REQ. ITEM	PART NO.	MARTINENGO DESCRIPTION	SYMBOL
									THE TECHNICAL MATERIEL CORP. MAMARONECK, NEW YORK RECEPTACLE QDM TO SOLDER CUP	
								STOCK SIZE		
								MATERIAL		
								TYPE & TEMPER		HEAT TREAT. SPEC.
									MTANTILLO	
									DRAWN	CHECKED
										FINAL APPROVAL
										JJ-276
									ELEC. DES. APP.	MECH. DES. APP.

UNLESS OTHERWISE SPECIFIED
 DIMENSIONS ARE IN INCHES AND INCLUDE
 CHEMICALLY APPLIED OR PLATED FINISHES

SCALE

DECIMALS
 .X ± .05
 .XX ± .01
 .XXX ± .005

FRACTIONS
 ± 1/64
 ANGLES
 ± 0° 30'

TOLERANCES

THE CONTENTS OF THIS DRAWING ARE THE EXCLUSIVE PROPERTY OF THE TECHNICAL MATERIEL CORP. ITS UNAUTHORIZED USE FOR REPRODUCTION IN WHOLE OR IN PART IS STRICTLY FORBIDDEN.

REQ. PER UNIT

MODEL

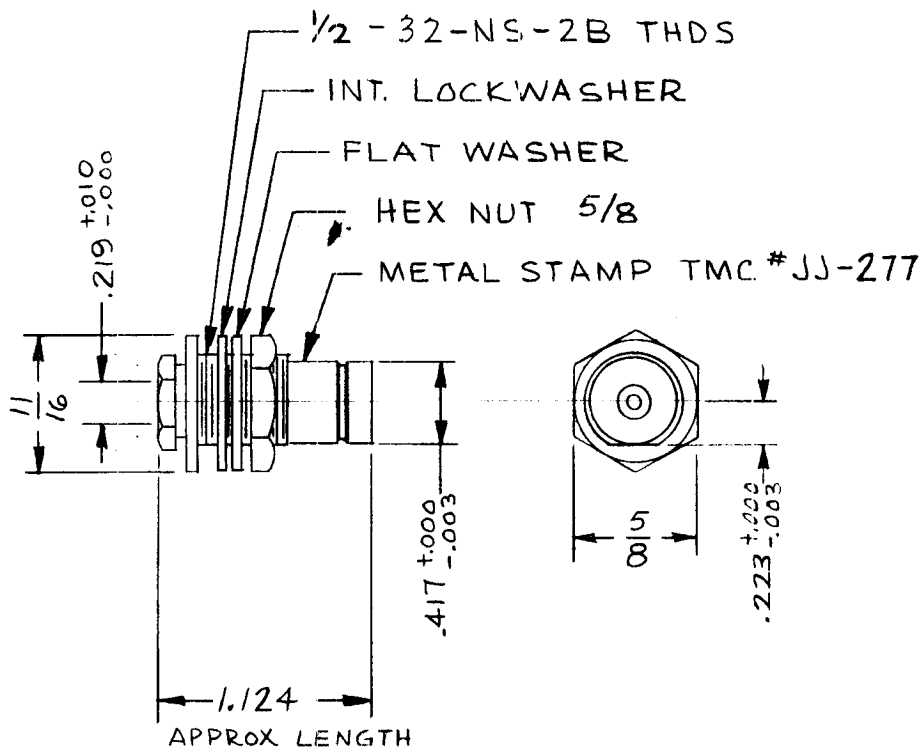
USED ON

ASS'Y. NO.

DATE

1-16-63

JJ-277



SPECIFICATIONS:

Series - QDM
 No. of Contacts - One
 Type of Contact - Female
 Dielectric - Teflon

ELECTRICAL DATA:

Max. Peak Opr. Volt - 500 Volts
 Freq. Limit - 10,000 Mcs.
 Nominal Impedance - 50 ohms

CABLE ACCOMMODATIONS:

Type - RG-58/U

MATING ACCOMMODATIONS: TYPE - QDM

MATERIAL:

External Parts - Brass
 Contact - Beryllium Copper
 Gasket -

FINISH:

External Parts - Silver Plate,
 Rhodium Flash
 Contact - Silver Plate, Gold Flash

Panel Max. Thickness - 3/16"

REQ.	ITEM	PART NO.	MARTINENGO DESCRIPTION				SYMBOL
			THE TECHNICAL MATERIEL CORP. MAMARONECK. NEW YORK				
			STOCK SIZE				
			SEE NOTE				CONNECTOR, BULKHEAD RECEPTACLE
			MATERIAL				QDM TO RG-58/U
SYM	DESCRIPTION	DATE	CH. NO.	DRAFTS	CHECKER	ENG. APP.	M TANTILLO
UNLESS OTHERWISE SPECIFIED DIMENSIONS ARE IN INCHES AND INCLUDE CHEM CALLY APPLIED OR PLATED FINISHES		SCALE					
DECIMALS X ± .05 .XX ± .01 .XXX ± .005	TOLERANCES	FRACTIONS ± 1/64 ANGLES ± 0° 30'	CODE	S401-70-3279			SEE NOTE
				FINISH & SPEC. NO.		ELEC. DES. APP. MECH. DES. APP.	
						JJ-277	

THE CONTENTS OF THIS DRAWING ARE THE EXCLUSIVE PROPERTY OF THE TECHNICAL MATERIEL CORP. ITS UNAUTHORIZED USE FOR REPRODUCTION IN WHOLE OR IN PART IS STRICTLY FORBIDDEN.

REQ. PER UNIT

USED ON

MODEL

ASS'Y. NO.

DATE

1-16-63

JJ-278

SPECIFICATIONS:

Series - QDS
 No. of Contacts - One
 Type of Contacts - Female
 Dielectric - Teflon

ELECTRICAL DATA:

Max. Peak Opr. Volt - 1500 volts
 Freq. Limit - 10,000 Mcs
 Nominal Impedance - 50 ohms

CABLE ACCOMMODATIONS:

Type - RG-58/U, RG-55/U, RG-223/U

MATING ACCOMMODATIONS: TYPE - QDS

MATERIAL:

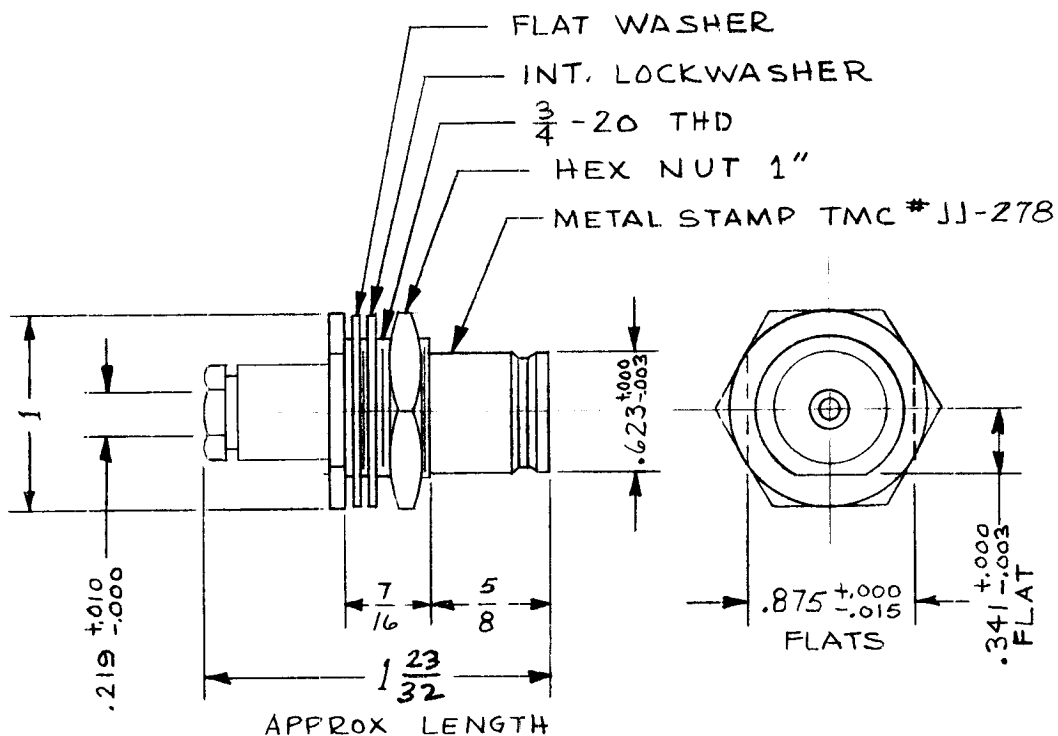
External Parts - Brass
 Contact - Beryllium Copper
 Gasket - Silicone Rubber

FINISH:

External Parts - Silver Plate,
 Rhodium Flash
 Contact - Silver Plate, Gold
 Flash

PANEL:

Max. Thickness - 3/16"



REQ.	ITEM	PART NO.	DESCRIPTION			SYMBOL					
			THE TECHNICAL MATERIEL CORP. MAMARONECK, NEW YORK								
			STOCK SIZE								
			SEE NOTES			CONNECTOR, BULKHEAD RECEPTACLE					
			MATERIAL			QDS TO RG-58/U					
SYM			DATE	CH. NO.	DRAFTS	CHECKER	ENG. APP.	M. TANTILLO			
UNLESS OTHERWISE SPECIFIED DIMENSIONS ARE IN INCHES AND INCLUDE CHEMICALLY APPLIED OR PLATED FINISHES			SCALE								
DECIMALS .X ± .05 .XX ± .01 .XXX ± .005			FRACTIONS ± 1/64 ANGLES ± 0° 30'			TOLERANCES			CODE		
			S401-70-3076								
			SEE NOTES			FINISH & SPEC. NO.			ELEC. DES. APP. MECH. DES. APP.		
									JJ-278		

THE CONTENTS OF THIS DRAWING ARE THE EXCLUSIVE PROPERTY OF THE TECHNICAL MATERIEL CORP. ITS UNAUTHORIZED USE FOR REPRODUCTION IN WHOLE OR IN PART IS STRICTLY FORBIDDEN.

REQ. PER UNIT

MODEL

USED ON

ASS'Y. NO.

DATE

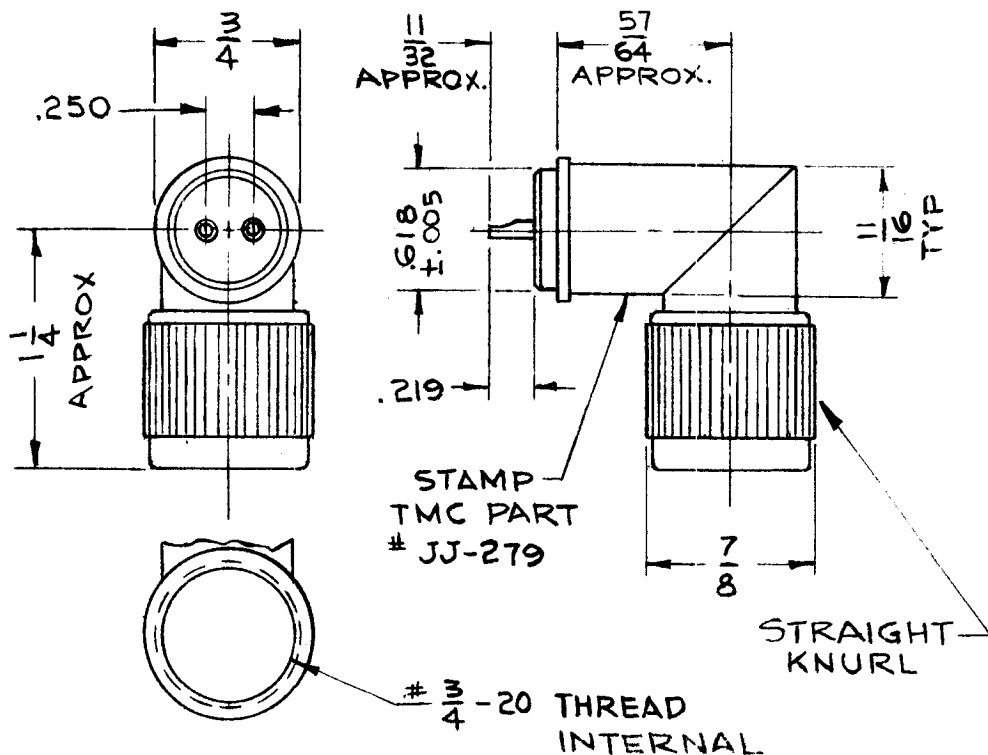
JJ-279

1

RBT-6

A-3117

2-13-63



SPECIFICATIONS:

Series - Twin (small)
 No. of Contacts - Two (2)
 Type of Contact - Male
 Dielectric - Rexolite

ELECTRICAL DATA:

Max. Peak Opr. Volt - 500v
 Freq. Limit - 500 mcs
 Nominal Impedance -

CABLE ACCOMMODATIONS:

Type - N/A

MATING ACCOMMODATIONS:

Type - Solder Cup

MATERIAL:

External Parts - Brass
 Contact - Brass
 Gasket - Silicone Rubber

FINISH:

External Parts - Silver Plate
 Contact - Silver Plate

PANEL:

Max. Thickness - N/A

							REQ. ITEM	PART NO.	PARTING NO. DESCRIPTION			SYMBOL			
									THE TECHNICAL MATERIEL CORP. MAMARONECK, NEW YORK CONNECTOR, RECEPTACLE						
												STOCK SIZE			
												MATERIAL			
SYM	DESCRIPTION	DATE	CH. NO.	DRAFTS	CHECKER	ENG. APP.			DRAWN	CHECKED	FINAL APPROVAL				
UNLESS OTHERWISE SPECIFIED DIMENSIONS ARE IN INCHES AND INCLUDE CHEMICALLY APPLIED OR PLATED FINISHES		SCALE		1:1											
DECIMALS .X ± .05 .XX ± .01 .XXX ± .005		FRACTIONS ± 1/64 ANGLES ± 0° 30'		TOLERANCES		CODE		TYPE & TEMPER HEAT TREAT. SPEC.		FINISH & SPEC. NO.		ELEC. DES. APP. MECH. DES. APP.			
				5401-70 (2924)								JJ-279			

REQ. PER UNIT	USED ON			JJ-280
	MODEL	ASS'Y. NO.	DATE	

SPECIFICATIONS:

Series - QDS
 No. of Contacts - ONE (1)
 Type of Contact - FEMALE
 Dielectric - TEFLON

ELECTRICAL DATA:

Max. Peak Opr. Volt - 1000 V
 Freq. Limit - 10,000 MCS
 Nominal Impedance - 50 OHMS

CABLE ACCOMMODATIONS:

Type - RG-8-10-213-214-215-216/U

MATING ACCOMMODATIONS:

Type - QDS

MATERIAL:

External Parts - BRASS
 Contact - BERYLLIUM COPPER
 Gasket - SILICONE RUBBER

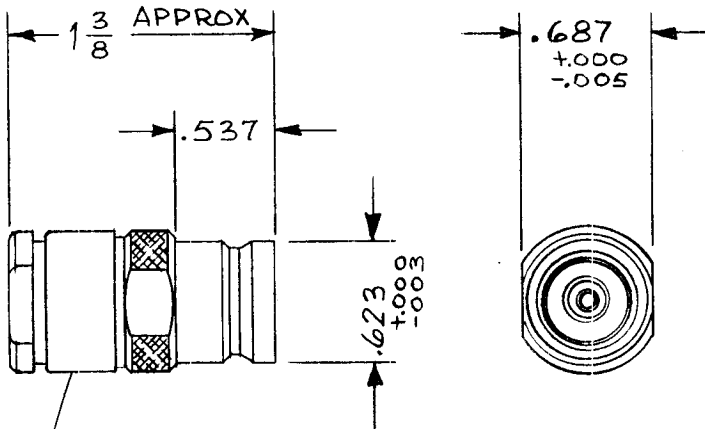
FINISH:

External Parts - RHODIUM

Contact - GOLD

PANEL:

Max. Thickness - NONE



STAMP TMC
 PART NO. JJ-280

SYM	DESCRIPTION	DATE	CH. NO.	DRAFTS	CHECKER	ENG. APP.	REQ. ITEM	PART NO.	MARTINENGO DESCRIPTION	SYMBOL
									THE TECHNICAL MATERIEL CORP. MAMARONECK, NEW YORK	
								STOCK SIZE	CONNECTOR, RECEPTACLE	
								MATERIAL	QDS TO CABLE	
									M. TANTILLO 9-20-63	
									9/25/63	BP
								TYPE & TEMPER	CHECKED	FINAL APPROVAL
								HEAT TREAT. SPEC.		
									DRAWN	
										JJ-280
								FINISH & SPEC. NO.	ELEC. DES. APP.	MECH. DES. APP.

THE CONTENTS OF THIS DRAWING ARE THE EXCLUSIVE PROPERTY OF THE TECHNICAL MATERIEL CORP. ITS UNAUTHORIZED USE FOR REPRODUCTION IN WHOLE OR IN PART IS STRICTLY FORBIDDEN.

REQ. PER UNIT

USED ON

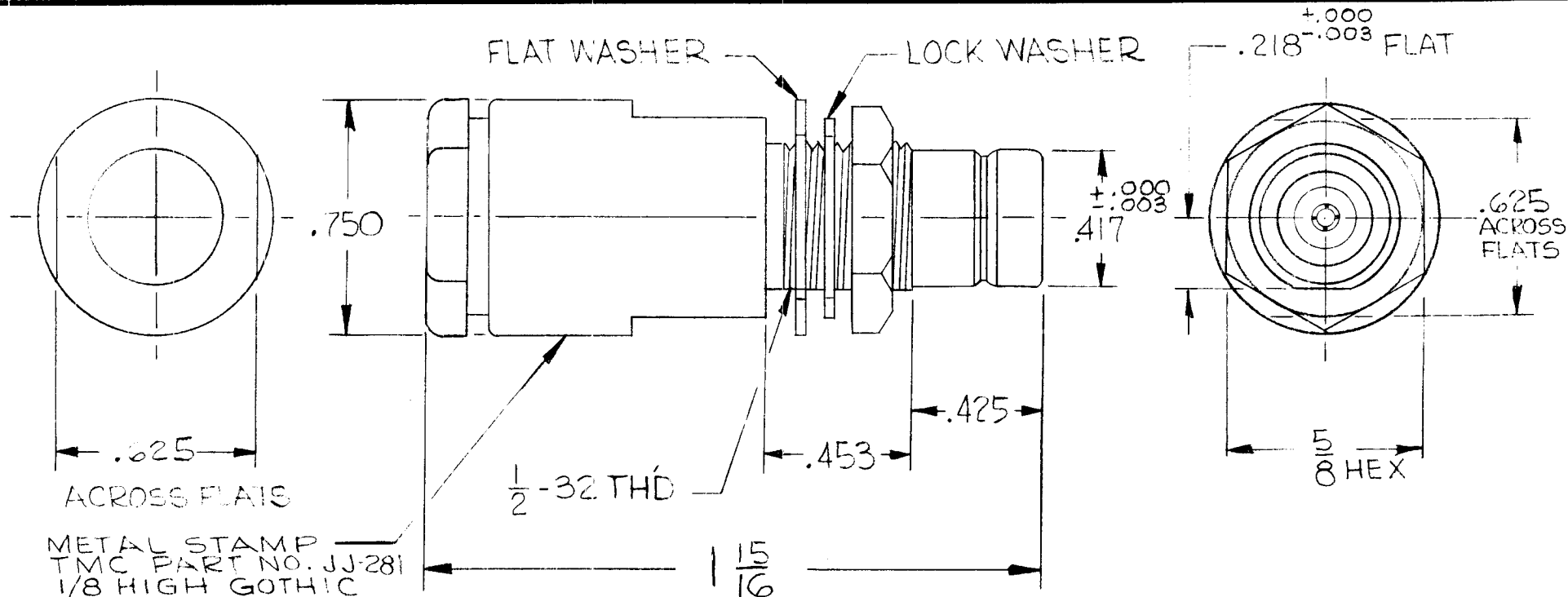
MODEL

ASS'Y. NO.

DATE

4-8-63

JJ-281



SPECIFICATIONS

Series - QDM
No. of Contacts - One(1)
Type of Contact - Female
Dielectric - Teflon

CABLE ACCOMMODATIONS

Type - RG-214/U

ELECTRICAL DATA

Max. Peak Opr. Volt - 500V.
Freq. Limit - 10,000 MC.
Nom. Impedance - 50 Ohms

MATING ACCOMMODATIONS

Type - QDM

MATERIAL

External Parts - Brass
Contact - Beryllium
Copper
Gasket - Silicone
Rubber
Lockwasher -
Phosphor Bronze

FINISH

Ext. Parts - Silver Plate
and Rhodium Flash
Contact - Silver Plate
and Gold Flash

PANEL

Max. Thickness - 3/16

REQ.	ITEM	PART NO.	MARTINENGO DESCRIPTION			SYMBOL
			THE TECHNICAL MATERIEL CORP. MAMARONECK, NEW YORK			
			STOCK SIZE			
			SEE NOTE			
			MATERIAL			
			CONNECTOR, RECEPTACLE QDM SERIES			
SYM	DESCRIPTION	DATE	CH. NO.	DRAFTS	CHECKER	ENG. APP.
	UNLESS OTHERWISE SPECIFIED DIMENSIONS ARE IN INCHES AND INCLUDE CHEMICALLY APPLIED OR PLATED FINISHES	SCALE	2 X 1			
	DECIMALS .X ± .05 .XX ± .01 .XXX ± .005	TOLERANCES	FRACTIONS ± 1/64 ANGLES ± 0° 30'	CODE	S401-70(2929)	
					TYPE & TEMPER	HEAT TREAT. SPEC.
					SEE NOTE	
					FINISH & SPEC. NO.	ELEC. DES. APP.
						MECH. DES. APP.
						JJ-281

THE CONTENTS OF THIS DRAWING ARE THE EXCLUSIVE PROPERTY OF THE TECHNICAL MATERIEL CORP. ITS UNAUTHORIZED USE FOR REPRODUCTION IN WHOLE OR IN PART IS STRICTLY FORBIDDEN.

REQ. PER UNIT

USED ON

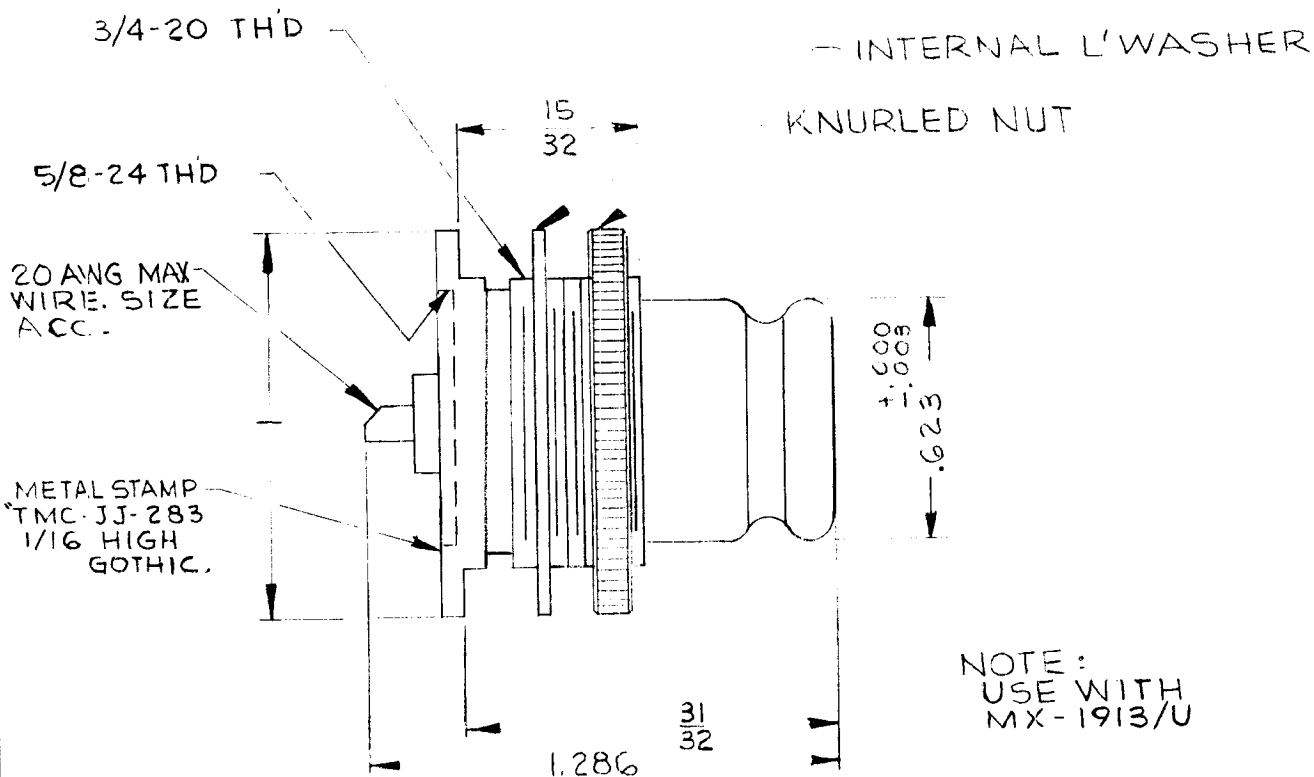
MODEL

ASS'Y. NO.

DATE

JJ-283

TO BE SUPPLIED BY MFR.
 1- KNURLED NUT, TMC # NT-125
 1- INTERNAL L' WASHER
 1- FLAT WASHER



SPECIFICATIONS:

Series - QDS
 No. of Contacts - One (1)
 Type of Contact - Female
 Dielectric - Teflon

ELECTRICAL DATA:

Max. Peak Opr. Volt - 5000 V.
 Freq. Limit - 10,000 MCs.
 Nominal Impedance - 50 Ohms

CABLE ACCOMMODATIONS:

Type -

MATING ACCOMMODATIONS:

Type - Solder Cup

MATERIAL:

External Parts - Brass
 Contacts - Beryllium Copper

FINISH:

External Parts - Silver Plate and Rhodium Flash
 Contacts - Silver Plate and Gold Flash

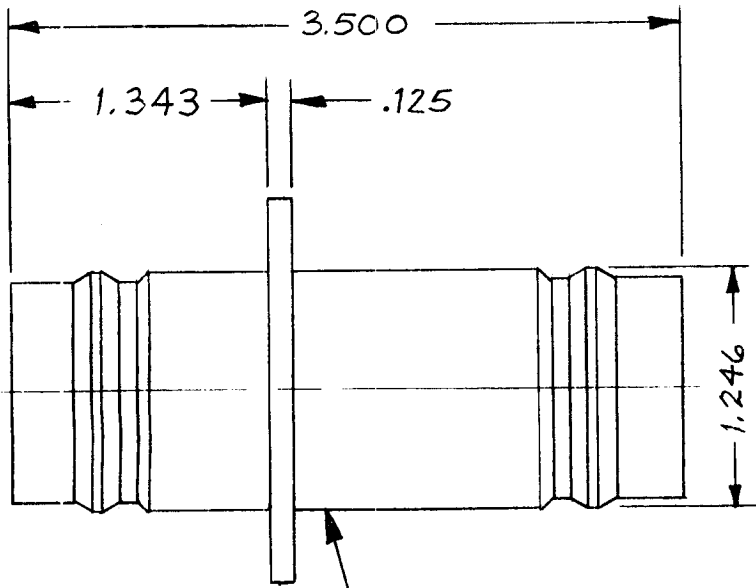
PANEL:

Max. Thickness - 3/16

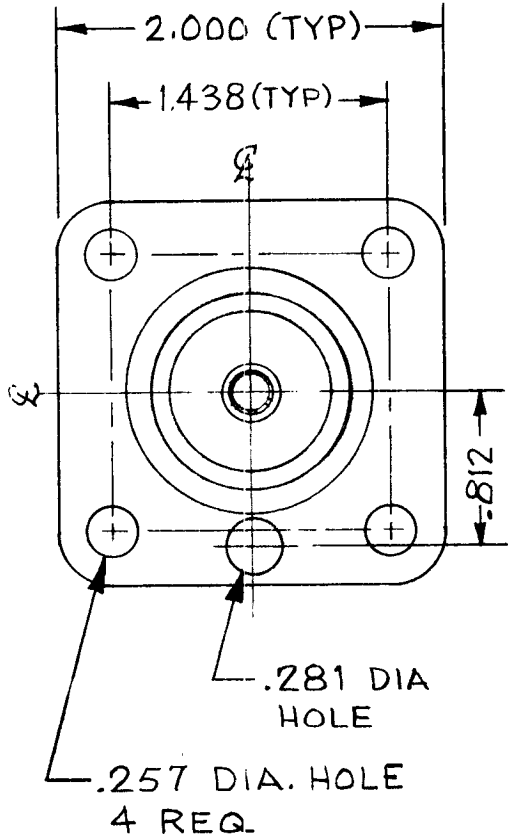
NOTE:
 USE WITH
 MX-1913/U

							REQ. ITEM	PART NO.	MATERIAL AND DESCRIPTION			SYMBOL	
							STOCK SIZE		THE TECHNICAL MATERIEL CORP. MAMARONECK, NEW YORK				
							MATERIAL		CONNECTOR, RECEPTACLE (QDS)				
SYM	DESCRIPTION	DATE	CH. NO.	DRAFTS	CHECKER	ENG. APP.							
UNLESS OTHERWISE SPECIFIED DIMENSIONS ARE IN INCHES AND INCLUDE CHEMICALLY APPLIED OR PLATED FINISHES		SCALE											
		S-401-70 (2943)											
DECIMALS .X ± .05 .XX ± .01 .XXX ± .005		FRACTIONS ± 1/64 ANGLES ± 0° 30'		CODE									
TOLERANCES													
							TYPE & TEMPER	HEAT TREAT. SPEC.	DRAWN		CHECKED	FINAL APPROVAL	
							FINISH & SPEC. NO.		ELEC. DES. APP.		MECH. DES. APP.		JJ-283

REQ. PER UNIT	USED ON			JJ-284
	MODEL	ASS'Y. NO.	DATE	



STAMP TMC
PART No. JJ-284



SPECIFICATIONS:

Series - QDL
No. of Contacts - ONE (1)
Type of Contact - FEMALE (CAPTIVE)
Dielectric - TEFLON

ELECTRICAL DATA:

Max. Peak Opr. Volt - 10 KV
Freq. Limit -
Nominal Impedance - 50 OHMS

CABLE ACCOMMODATIONS:

Type - NONE

MATING ACCOMMODATIONS:

Type - QDL

MATERIAL:

External Parts - BRASS
Contact - BERYLLIUM COPPER
Gasket - NONE

FINISH:

External Parts - RHODIUM
Contact - GOLD FLASH

PANEL:

Max. Thickness - 3/16

NOTE:

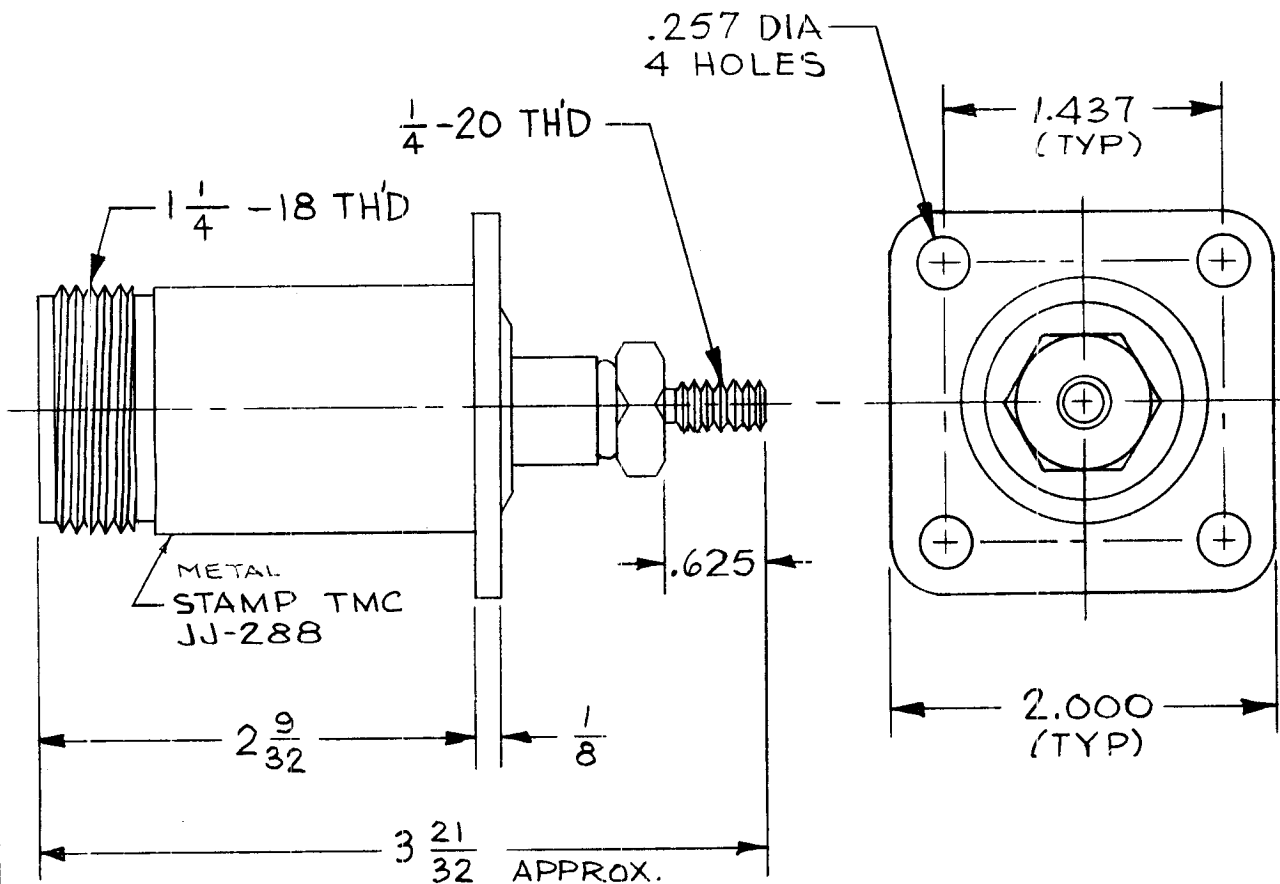
- CENTER CONDUCTOR CAPTIVATED.
- REPLACEMENT FOR JJ-136 AND JJ-138

SYM	DESCRIPTION	DATE	CH. NO.	DRAFTS	CHECKER	ENG. APP.	REQ. ITEM	PART NO.	MARTINENGO DESCRIPTION	SYMBOL
									THE TECHNICAL MATERIEL CORP. MAMARONECK. NEW YORK	
									ADAPTER, CONNECTOR	
									QDL TO QDL	
									M. TANTILLO 10-4-63	BP
									DRAWN	CHECKED
									10-5-63	JJ-284
									ELEC. DES. APP.	MECH. DES. APP.

THE CONTENTS OF THIS DRAWING ARE THE EXCLUSIVE PROPERTY OF THE TECHNICAL MATERIEL CORP. ITS UNAUTHORIZED USE FOR REPRODUCTION IN WHOLE OR IN PART IS STRICTLY FORBIDDEN.

REQ. PER UNIT	USED ON		
	MODEL	ASS'Y. NO.	DATE
			6-18-63

JJ-288



SPECIFICATIONS:

Series - LC (10)
 No. of Contacts - One (1)
 Type of Contact - Female
 Dielectric - Teflon

ELECTRICAL DATA:

Max. Peak Opr. Volt - 10,000 V.
 Nominal Impedance - 50 Ohms

MATING ACCOMMODATIONS:

Type - Stud

MATERIAL:

External Parts - Brass
 Contact - Beryllium Copper
 Gasket - Silicone Rubber

FINISH:

External Parts - Silver Plate
 and Rhodium Flash
 Contact - Silver Plate and
 Gold Flash

SYM	DESCRIPTION	DATE	CH. NO.	DRAFTS	CHECKER	ENG. APP.	REQ. ITEM	PART NO.	DESCRIPTION	SYMBOL	
									THE TECHNICAL MATERIEL CORP. MAMARONECK, NEW YORK CONNECTOR, RECEPTACLE LC (10)		
								STOCK SIZE			
								MATERIAL			
								TYPE & TEMPER			
UNLESS OTHERWISE SPECIFIED DIMENSIONS ARE IN INCHES AND INCLUDE CHEMICALLY APPLIED OR PLATED FINISHES		SCALE	NOTES							M. TANTILLO 6-18-63	6-18-63
DECIMALS .X ± .05 .XX ± .01 .XXX ± .005		TOLERANCES		FRACTIONS ± 1/64 ANGLES ± 0° 30'		CODE	S401-70-2957		DRAWN	CHECKED	FINAL APPROVAL
							FINISH & SPEC. NO.		ELEC. DES. APP.	MECH. DES. APP.	JJ-288

THE CONTENTS OF THIS DRAWING ARE THE EXCLUSIVE PROPERTY OF THE TECHNICAL MATERIEL CORP. ITS UNAUTHORIZED USE FOR REPRODUCTION IN WHOLE OR IN PART IS STRICTLY FORBIDDEN.

REQ. PER UNIT

USED ON

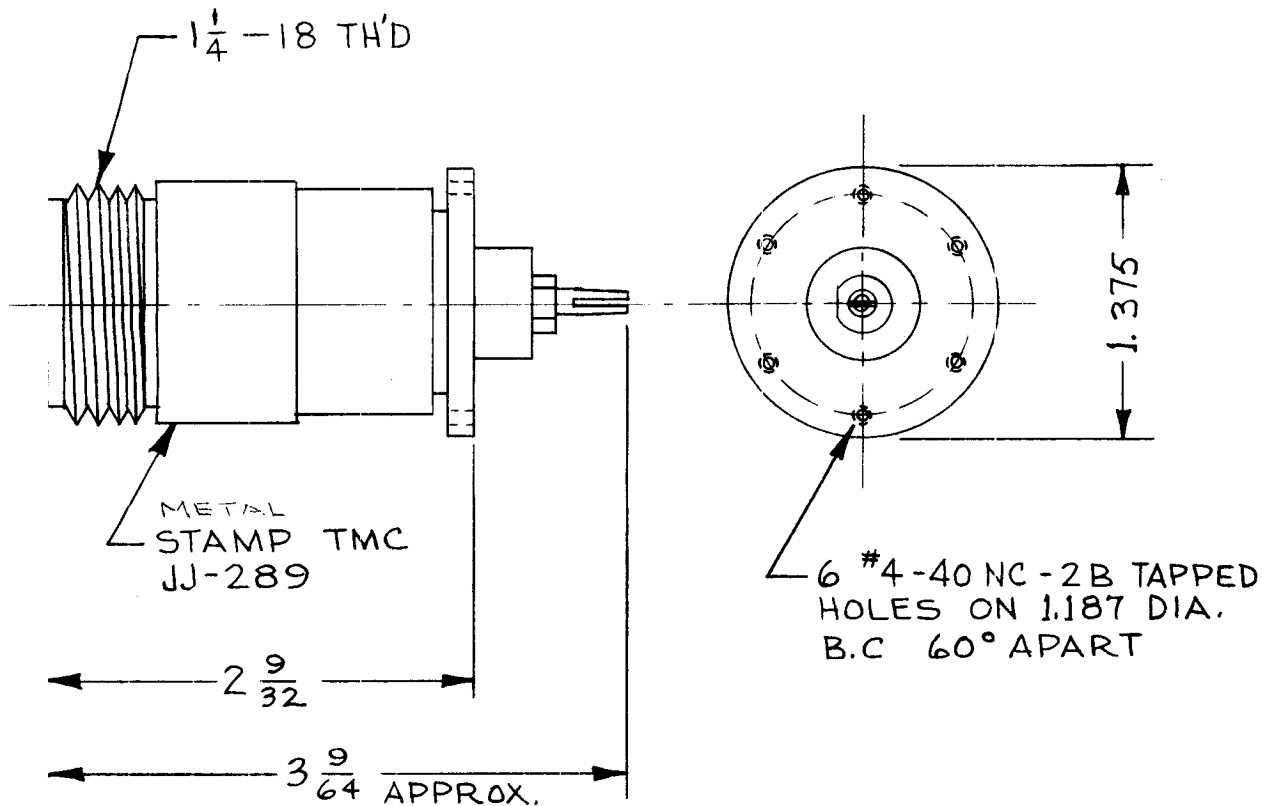
MODEL

ASS'Y. NO.

DATE

6-18-63

JJ-289



SPECIFICATIONS:

Series - LC (10)
 No. of Contacts - One (1)
 Type of Contact - Female
 Dielectric - Teflon

ELECTRICAL DATA:

Max. Peak Opr. Volt - 10,000 V.
 Nominal Impedance - 50 Ohms

MATING ACCOMMODATIONS:

Type - TCA-85/LC(10)

MATERIAL:

External Parts - Brass
 Contact - Beryllium Copper

FINISH:

External Parts - Silver Plate and Rhodium Flash
 Contact - Silver Plate and Gold Flash

SYM	DESCRIPTION	DATE	CH. NO.	DRAFTS	CHECKER	ENG. APP.	REQ. ITEM	PART NO.	DESCRIPTION	SYMBOL	
									THE TECHNICAL MATERIEL CORP. MAMARONECK, NEW YORK		
								STOCK SIZE	CONNECTOR, RECEPTACLE		
								MATERIAL	LC (10)		
	UNLESS OTHERWISE SPECIFIED DIMENSIONS ARE IN INCHES AND INCLUDE CHEMICALLY APPLIED OR PLATED FINISHES	SCALE	NONE						M.J. TANTILLO 6-18-63	6-18-63	
	DECIMALS .X ± .05 .XX ± .01 .XXX ± .005	FRACTIONS ± 1/64 ANGLES ± 0° 30'	CODE	S401-70-2956					DRAWN	CHECKED	FINAL APPROVAL
	TOLERANCES							HEAT TREAT. SPEC.		JJ-289	
								FINISH & SPEC. NO.	ELEC. DES. APP.	MECH. DES. APP.	

THE CONTENTS OF THIS DRAWING ARE THE EXCLUSIVE PROPERTY OF THE TECHNICAL MATERIEL CORP. ITS UNAUTHORIZED USE FOR REPRDUCTION IN WHOLE OR IN PART IS STRICTLY FORBIDDEN.

REQ. PER UNIT

USED ON

MODEL

ASSY. NO.

DATE

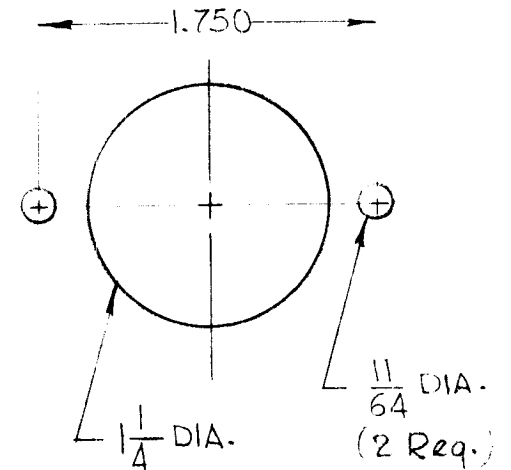
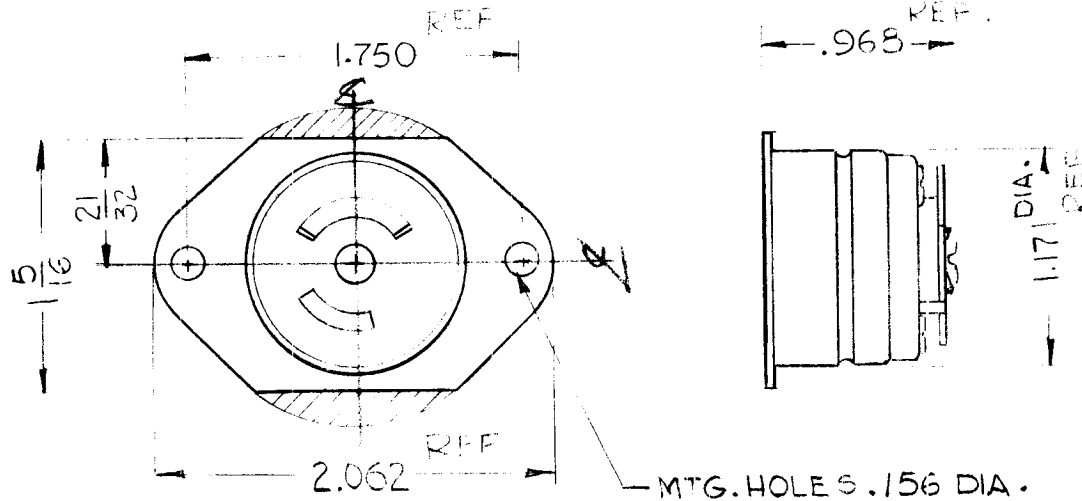
1

LFA-4

5-31-63

JJ-290

MTG. DETAIL



-- ELECTRICAL SPECIFICATIONS --
 10 AMPS, 250 VOLTS
 15 AMPS, 125 VOLTS

NOTE:
 MODIFY TMC PART NO. JJ-235
 BY REMOVING SHADED
 AREA AS SHOWN.

							REQ. ITEM	PART NO.	O. POSE	DESCRIPTION	SYMBOL	
										THE TECHNICAL MATERIEL CORP. MAMARONECK, NEW YORK		
										PLUG. RECEPTACLE		
										TWIST LOCK, FEMALE		
SYM	DESCRIPTION	DATE	CH. NO.	DRAFTS	CHECKER	ENG. APP.	MATERIAL		G.D.L.	6/6/63	6.14.63	
UNLESS OTHERWISE SPECIFIED DIMENSIONS ARE IN INCHES AND INCLUDE CHEMICALLY APPLIED OR PLATED FINISHES		SCALE					TYPE & TEMPER		HEAT TREAT. SPEC.	DRAWN	CHECKED	FINAL APPROVAL
DECIMALS .X ± .05 .XX ± .01 .XXX ± .005		TOLERANCES	S401-43(7487) MODIFIED				FINISH & SPEC. NO.		ELEC. DES. APP.	MECH. DES. APP.		JJ-290
FRACTIONS ± 1/64 ANGLES ± 0° 30'		CODE										

REQ. PER UNIT	USED ON		
	MODEL	ASS'Y. NO.	DATE
			JJ-291

SPECIFICATIONS:
 Series - "C"
 No. of Contacts - One (1)
 Type of Contact - Female
 Dielectric - Teflon

ELECTRICAL DATA:
 Max. Peak Opr. Volt - 1500 V
 Freq. Limit - 10,000 MCS
 Nominal Impedance - 50Ω

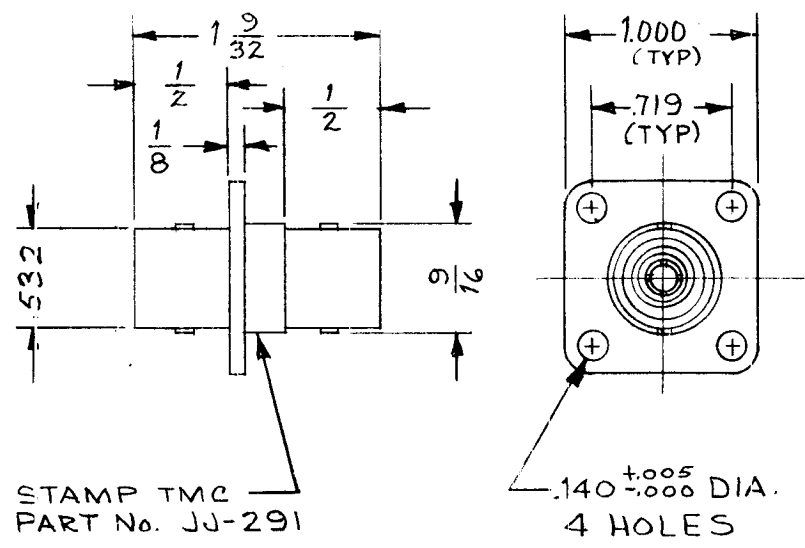
CABLE ACCOMMODATIONS:
 Type - None

MATING ACCOMMODATIONS:
 Type - C

MATERIAL:
 External Parts - Brass
 Contact - Beryllium Copper

FINISH:
 External Parts - Silver Plate & Rhodium Flash
 Contact - Silver Plate & Gold Flash

PANEL:
 Max. Thickness - 3/16



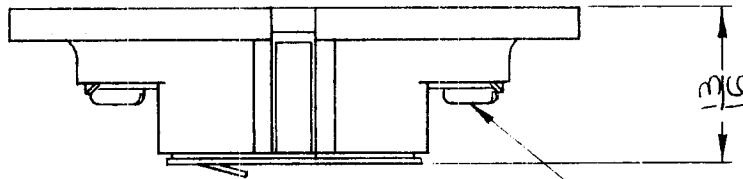
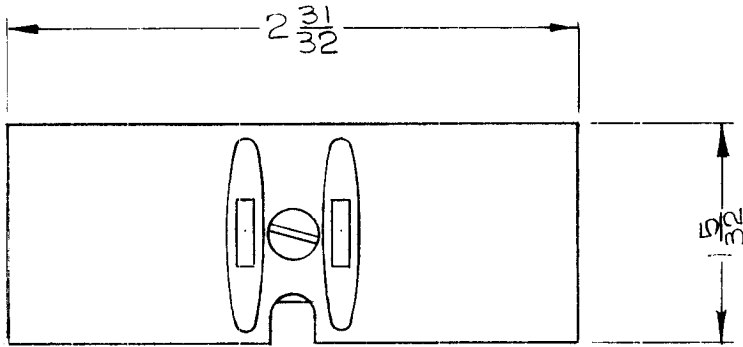
REQ.	ITEM	PART NO.	MARTINENGO	DESCRIPTION	SYMBOL						
				THE TECHNICAL MATERIEL CORP. MAMARONECK. NEW YORK							
				ADAPTER, CONNECTOR.							
				C (F) TO C (F)							
SYM	DESCRIPTION	DATE	CH. NO.	DRAFTS	CHECKER	ENG. APP.	MATERIAL				
UNLESS OTHERWISE SPECIFIED DIMENSIONS ARE IN INCHES AND INCLUDE CHEMICALLY APPLIED OR PLATED FINISHES		SCALE									
DECIMALS .X ± .05 .XX ± .01 .XXX ± .005	TOLERANCES	FRACTIONS ± 1/64 ANGLES ± 0° 30'	CODE	S401-70-2962							
							TYPE & TEMPER	HEAT TREAT. SPEC.	DRAWN	CHECKED	FINAL APPROVAL
									M TANTILLO 9-18-63	9/23/63	BP
											JJ-291
							FINISH & SPEC. NO.	ELEC. DES. APP.	MECH. DES. APP.		

REQ. PER UNIT	USED ON			JJ-294	A
	MODEL	ASS'Y. NO.	DATE		

SPECIFICATIONS

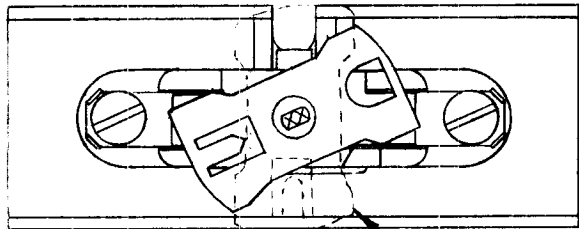
A CONTACT DATA

1. STYLE: TWO CONTACTS FLAT PARALELL POLARIZED; ONE CONTACT ROUND FOR GROUNDING.
 2. CURRENT RATING: 10A., 15A.
 3. ACVV: 250V, 125V.
 4. MATERIAL: COPPER
- B. SHELL MATERIAL: BLACK BAKELITE**
- C. POLARIZATION: CONTACT POSITIONS**
- D. CABLE DATA**
1. MAX. WIRE SIZE: 3 NO. 12 WIRES.



SCREW, #6-32 THD

NOTE: GROUNDING CIRCUIT IS COMPLETED TO STRIP CHANNEL, WHEN LOCKING BAR IS ROTATED AS SHOWN.



SEE NOTE

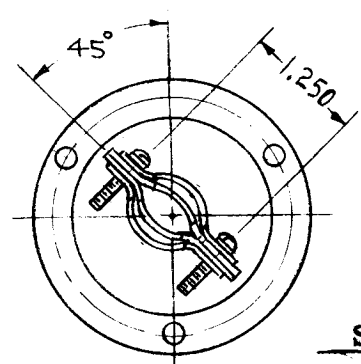
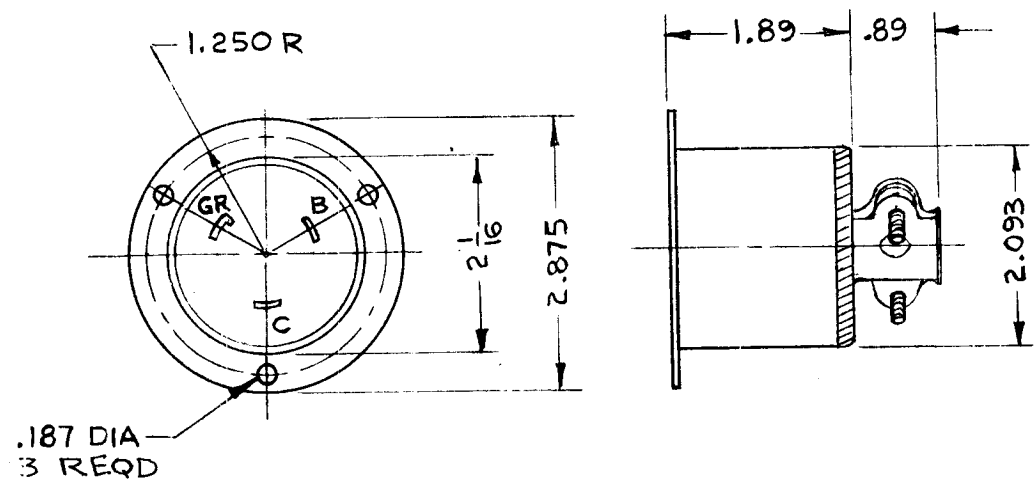
REF: PO-160, PL-218

REQ. ITEM	PART NO.	JOHNSON	DESCRIPTION	SYMBOL
			THE TECHNICAL MATERIEL CORP. MAMARONECK, NEW YORK	
			CONNECTOR, RECEPTACLE	
			3 CONTACT, GROUNDING TYPE	
			STOCK SIZE	
			MATERIAL	
			TYPE & TEMPER	
			HEAT TREAT. SPEC.	
			DRAWN	CHECKED
			FINAL APPROVAL	
			FINISH & SPEC. NO.	
			ELEC. DES. APP.	MECH. DES. APP.

TMC PART NO.	MFRS PART NO.	GROUND SHUNT
JJ-297-1	3336	NONE
JJ-297-2	3336 G	WITH GROUND SHUNT

REQ. PER UNIT	USED ON		
	MODEL	ASS'Y. NO.	DATE
1	RAK-31A		10-9-63

JJ 297 \emptyset

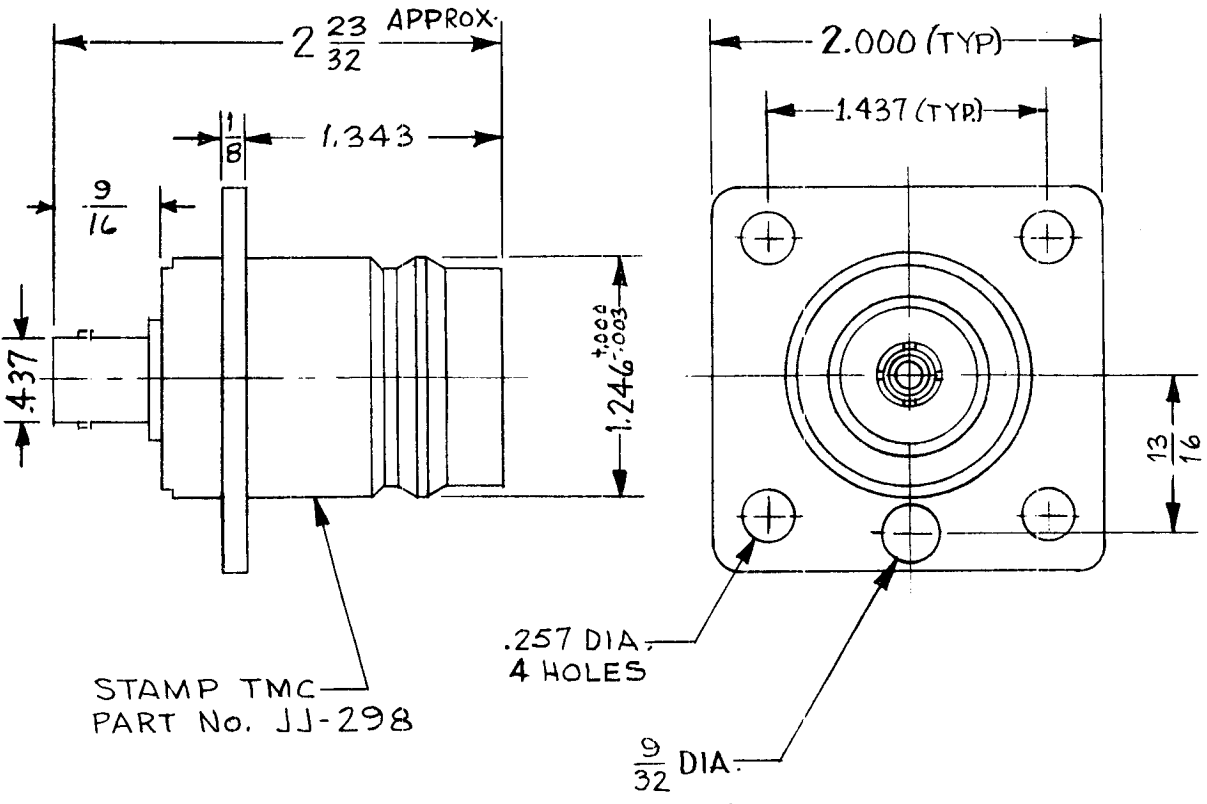


SPECIFICATIONS

1. QUANT. OF CONTACTS: 3
2. QUANT. OF MATING ENDS: 1
3. CONTACT DATA:
 - a) QUAN. OF IDENTICAL CONTACTS: 2
 - b) TYPE: MALE
 - c) STYLE: BLADE
 - d) CURRENT RATING: 30A
 - e) VOLTAGE RATING: 250 VAC/DC
 - f) GROUNDING OF CONTACT: GROUND CONTACT MAY BE CONNECTED TO SHELL
 - g) MATERIAL: BRASS
4. DIELECTRIC MATERIAL: BAKELITE
5. SHELL: a) MATERIAL: BRASS & STEEL
b) FINISH: SHELL: CAD. FACE: NICKEL
6. POLARIZATION: CONTACT SHAPE
7. LOCKING: TWIST
8. CABLE ACCOMMODATION: MAX. SIZE: .625-1.000
9. MATES WITH: PL-190

SYM	DESCRIPTION	DATE	CH. NO.	DRAFTS	CHECKER	ENG. APP.	REQ. ITEM	PART NO.	I. JOHNSON	DESCRIPTION	SYMBOL	
\emptyset	ORIGINAL RELEASE FOR PRODUCTION	12-9-64	\emptyset	92						THE TECHNICAL MATERIEL CORP. MAMARONECK. NEW YORK		
X ₁	JJ-297-2 WAS JJ-297-WG	12/29/63								RECEPTACLE, CONNECTOR,		
	JJ-297-1 WAS JJ-297-NG									30 A, POLARIZED		
	UNLESS OTHERWISE SPECIFIED DIMENSIONS ARE IN INCHES AND INCLUDE CHEMICALLY APPLIED OR PLATED FINISHES	SCALE	1/2									
	DECIMALS .X ± .05 .XX ± .01 .XXX ± .005	FRACTIONS ± 1/64 ANGLES ± 0° 30'	CODE	C S-401-43								
	TOLERANCES						SEE SPEC					
							FINISH & SPEC. NO.			JJ 297	\emptyset	
										ELEC. DES. APP. MECH. DES. APP.		

REQ. PER UNIT	USED ON			JJ-298
	MODEL	ASS'Y. NO.	DATE	
	QDP-4CZX4		9-18-63	



STAMP TMC
PART No. JJ-298

.257 DIA.
4 HOLES

9/32 DIA.

SPECIFICATIONS:

Series - BNC
No. of Contacts - One (1)
Type of Contact - Female
Dielectric - Teflon

ELECTRICAL DATA:

Max. Peak Opr. Volt - 500 V
Freq. Limit - 10,000 MCS
Nominal Impedance - 50Ω

CABLE ACCOMMODATIONS:

Type - None

MATERIAL:

External Parts - Brass
Contact - Beryllium Copper

FINISH:

External Parts - Silver Plate &
Rhodium Flash
Contact - Silver Plate & Gold Flash

PANEL:

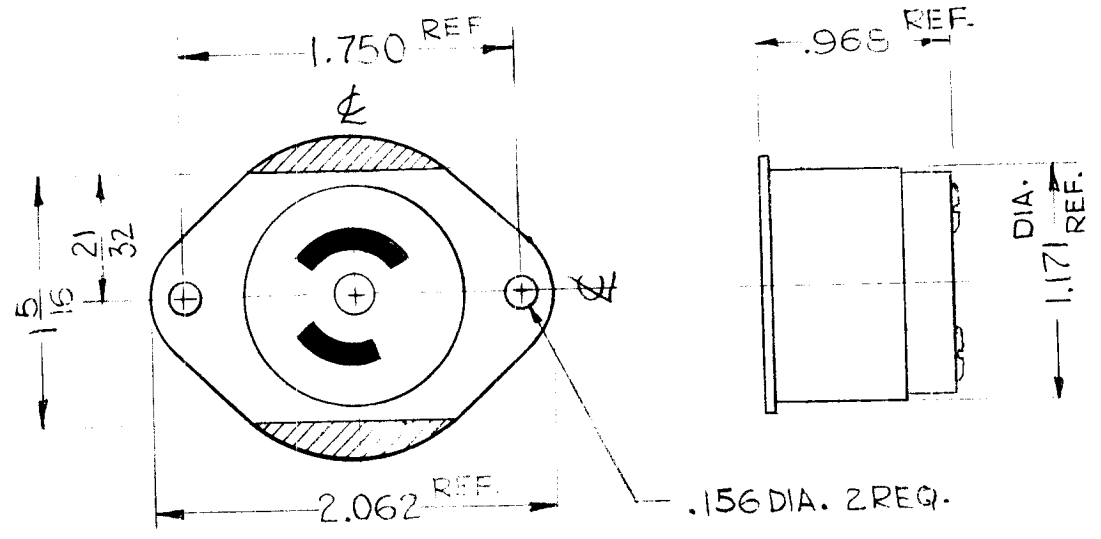
Max. Thickness - 3/16

MATING ACCOMMODATIONS:

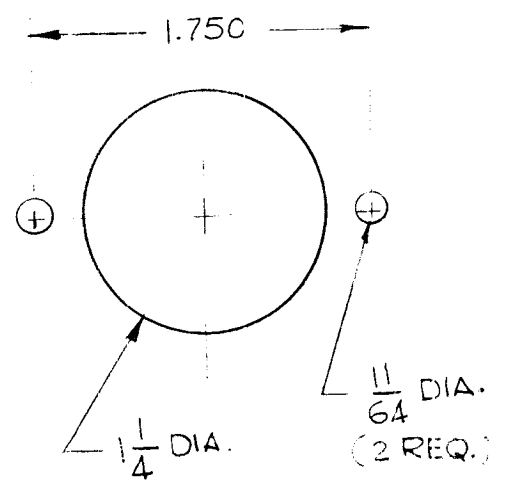
Type - QDL

SYM	DESCRIPTION	DATE	CH. NO.	DRAFTS	CHECKER	ENG. APP.	REQ. ITEM	PART NO.	MATERIAL	DESCRIPTION	SYMBOL	
										MARTINENGO		
									THE TECHNICAL MATERIEL CORP. MAMARONECK, NEW YORK			
									STOCK SIZE			
									ADAPTER, CONNECTOR			
									QDL(F) TO BNC(F)			
UNLESS OTHERWISE SPECIFIED DIMENSIONS ARE IN INCHES AND INCLUDE CHEMICALLY APPLIED OR PLATED FINISHES		SCALE					MATERIAL		M TANTILLO 9-18-63			
DECIMALS .X ± .05 .XX ± .01 .XXX ± .005		FRACTIONS ± 1/64 ANGLES ± 0° 30'		CODE		TYPE & TEMPER		HEAT TREAT. SPEC.		DRAWN CHECKED FINAL APPROVAL		
TOLERANCES				S401-70-2965						JJ-298		
									FINISH & SPEC. NO.		ELEC. DES. APP. MECH. DES. APP.	

REQ. PER UNIT	USED ON			JJ-299
	MODEL	ASS'Y. NO.	DATE	
1	LFA-4		9-27-63	



MTG. DETAIL



SPECIFICATIONS:
MIDGET SIZE
BLACK BAKELITE
POLARIZED
10 AMPS, 250 VOLTS
15 AMPS, 125 VOLTS

NOTE
MODIFY TMC PART NO. JJ-175
BY REMOVING SHADED
AREA AS SHOWN
MATES WITH TMC PART
NO. PL-176.

REQ.	ITEM	PART NO.	POSE	DESCRIPTION	SYMBOL						
				THE TECHNICAL MATERIEL CORP. MAMARONECK. NEW YORK							
				RECEPTACLE (TWISTLOCK) MALE							
				CHASSIS MOUNT (POLARIZED)							
SYM	DESCRIPTION	DATE	CH. NO.	DRAFTS	CHECKER	ENG. APP.	MATERIAL				
UNLESS OTHERWISE SPECIFIED DIMENSIONS ARE IN INCHES AND INCLUDE CHEMICALLY APPLIED OR PLATED FINISHES		SCALE		5401-43 (7486)					G.D.L.	10/7/63	JP
DECIMALS .X ± .05 .XX ± .01 .XXX ± .005		FRACTIONS ± 1/64 ANGLES ± 0° 30'		TOLERANCES		CODE	TYPE & TEMPER	HEAT TREAT. SPEC.	DRAWN	CHECKED	FINAL APPROVAL
											JJ-299
							FINISH & SPEC. NO.	ELEC. DES. APP.	MECH. DES. APP.		

STOCK NO. 440H