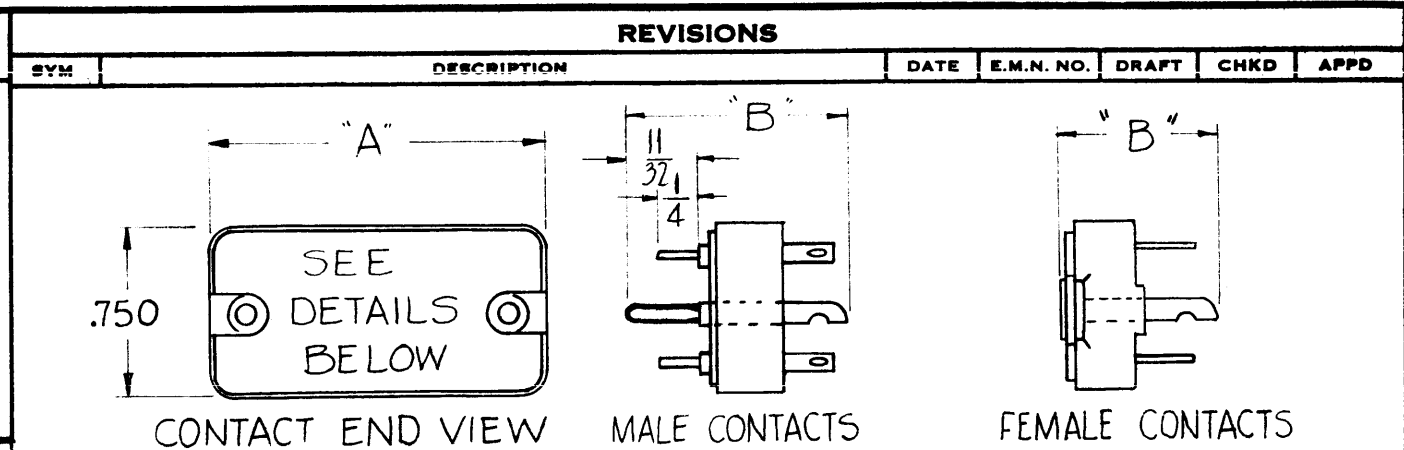


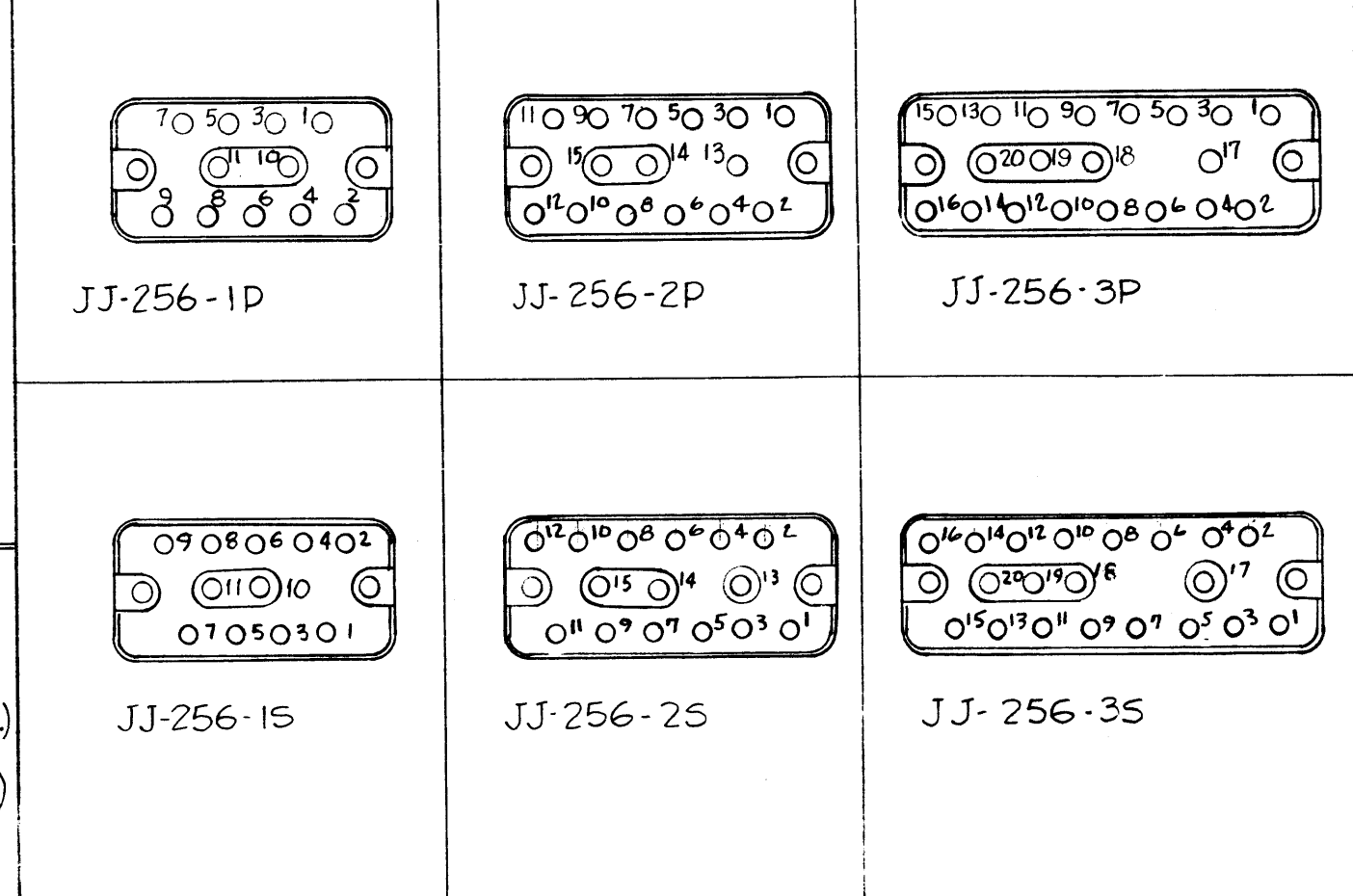
TMC PART NO	MFR. PART NO	TYPE OF CONTACT	TOTAL NO OF CONTACTS	CONTACT SIZE		VOLTAGE RATING AT SEA LEVEL	CONTACT CURRENT RATING	
				SIZE 16	SIZE 20		SIZE 16	SIZE 20
JJ-256-1P	126-804	MALE	11	2	9	900VRMS	23A	7.5A
JJ-256-1S	126-805	FEM.	11	2	9	900VRMS	23A	7.5A
JJ-256-2P	126-151	MALE	15	3	12	900VRMS	23A	7.5A
JJ-256-2S	126-150	FEM.	15	3	12	900VRMS	23A	7.5A
JJ-256-3P	126-806	MALE	20	4	16	900VRMS	23A	7.5A
JJ-256-3S	126-807	FEM.	20	4	16	900VRMS	23A	7.5A

JJ-256



DIMENSION CHART						
TMC PART NUMBER	"A" WIDTH	"B" LENGTH	MOUNTING DIMENSIONS			
			"C"	"D"	"E"	"F"
JJ-256-1P	1.171	.937	1.181	.120	.864	.120
JJ-256-1S	1.171	49/64	1.181	.120	.864	.120
JJ-256-2P	1.500	.937	1.510	.115	1.188	.145
JJ-256-2S	1.500	49/64	1.510	.115	1.188	.145
JJ-256-3P	1.937	.937	1.947	.120	1.620	.120
JJ-256-3S	1.937	49/64	1.947	.120	1.620	.120

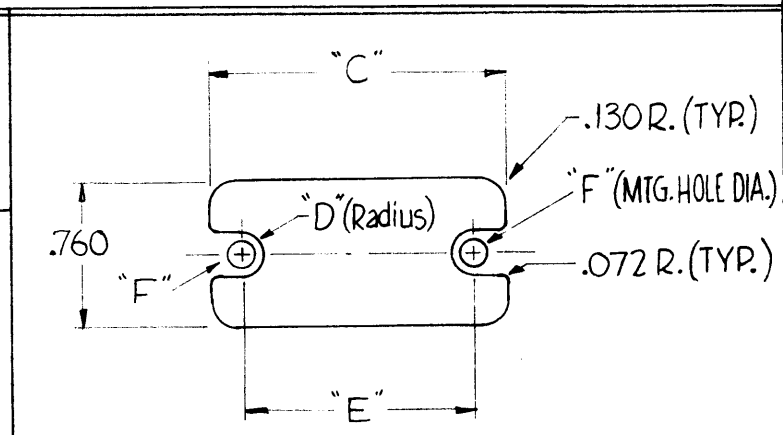
CONTACT ARRANGEMENTS SHOWN BELOW VIEWED FROM ENGAGING END



NOTE ~ MATING RECEPTACLE TMC PART NUMBER PL-228

SPECIFICATIONS

NON-LOCKING TYPE
 POLARIZED CONTACT ARRANGEMENT
 DIELECTRIC: MOLDED MICA-FILLED PHENOLIC
 CONTACTS:
 MALE: Brass, Silver Plated, Gold flashed
 FEMALE: Beryllium Copper, Silver Plated, Gold flashed.



MOUNTING DETAIL

MFR. REF. ~ AMPHENOL - Series 126, See Chart for full Number

REQ'D.	ITEM	PART NUMBER	DESCRIPTION	SYMBOL
LIST OF MATERIAL				
MATERIAL See Specs			THE TECHNICAL MATERIEL CORP. MAMARONECK, NEW YORK	
FINISH See Specs			TITLE CONNECTOR, RECEPTACLE, ELECTRICAL	
UNLESS OTHERWISE SPECIFIED DIMENSIONS ARE IN INCHES AND INCLUDE CHEMICALLY APPLIED OR PLATED FINISHES			DRAWN: <i>[Signature]</i> DATE: 7/6/62 CHECKED: <i>[Signature]</i> DATE: 7/16/62 ELECT. DES.: <i>[Signature]</i> DATE: 7/17/62 MECH. DES.: DATE:	FINAL APPROVAL: BP DATE: JJ-256 SHEET
DECIMALS .X ± .05 .XX ± .01 .XXX ± .005			FRACTIONS ± 1/64 ANGLES ± 0° 30'	TOLERANCES

NOTES

THE CONTENTS OF THIS DRAWING ARE THE EXCLUSIVE PROPERTY OF THE TECHNICAL MATERIEL CORP. ITS UNAUTHORIZED USE OR REPRODUCTION IN WHOLE OR IN PART IS STRICTLY FORBIDDEN.