

THE CONTENTS OF THIS DRAWING ARE THE EXCLUSIVE PROPERTY OF THE TECHNICAL MATERIEL CORP. ITS UNAUTHORIZED USE OR REPRODUCTION IN WHOLE OR IN PART IS STRICTLY FORBIDDEN.

REQ. PER UNIT

16

MODEL

QDP-4A3X16

USED ON

ASS'Y. NO.

DATE

5-7-62

JJ-247

1/2 - 28 NC - 2A

LOCKWASHER INTERNAL

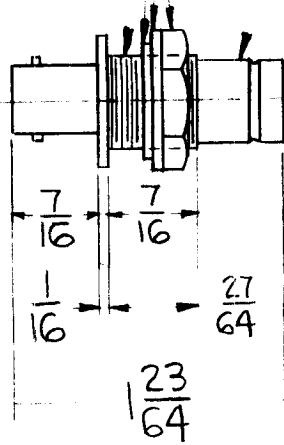
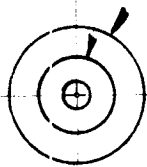
WASHER FLAT

NUT, HEX

STAMP TMC # JJ-247

11/32 DIA.

11/16 DIA.



SPECIFICATIONS:

Series - QDM

No. of Contacts - One, Each Side

Type of Contact - Female, Both

Dielectric - Teflon

ELECTRICAL DATA:

Max. Peak Opr. Volt - 500 Volts

Freq. Limit - 10,000 MCs.

Nominal Impedance - 50 Ohms

MATING ACCOMMODATIONS:

Type - BNC

MATERIAL:

External Parts - Brass

Contact - Beryllium Copper

Gasket -

FINISH:

External Parts - Silver Plate,
Rhodium Flash

Contact - Silver Plate, Gold Flash

SYM	DESCRIPTION	DATE	CH. NO.	DRAFTS	CHECKER	ENG. APP.	REQ. ITEM	PART NO.	DESCRIPTION	SYMBOL
									PRITCHARD	
							STOCK SIZE		THE TECHNICAL MATERIEL CORP. MAMARONECK, NEW YORK	
							MATERIAL		CONNECTOR, RECEPTACLE	
									"QDM" - BNC	
UNLESS OTHERWISE SPECIFIED: DIMENSIONS ARE IN INCHES TOLERANCES ON FRAC. ± 1/64 DEC. ± .005 ANGLES ± 1/2°							SCALE: S-401-70-2600		R. Turchin	
							TYPE & TEMPER		DRAWN	
							HEATTREAT. SPEC.		CHECKED	
							FINISH & SPEC. NO.		ELEC. DES. APP.	
									MECH. DES. APP.	
									FINAL APPROVAL	
									JJ-247	