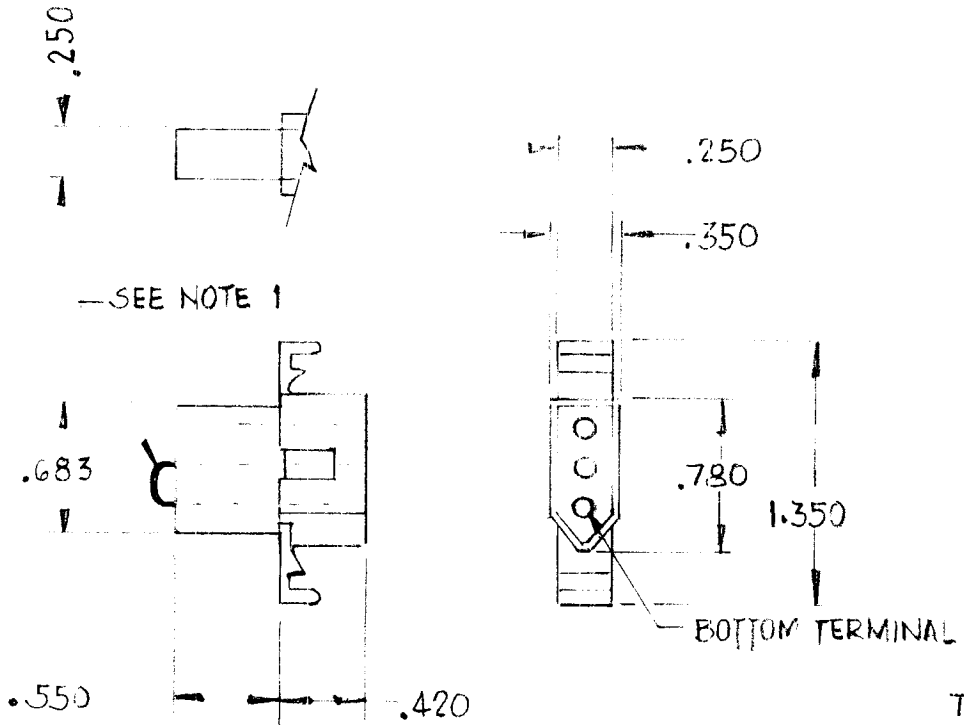


ISSUE	ITEM	CHANGED FROM	DATE	CN. NO.	DRAFTS	CHECKER	ENR. APP.	REQ	ITEM	PART NO.	DESCRIPTION	SYMBOL
-------	------	--------------	------	---------	--------	---------	-----------	-----	------	----------	-------------	--------

0		PROD RELEASE	30 Dec 73		mm							
---	--	--------------	-----------	--	----	--	--	--	--	--	--	--

NOTES:

- FOR JJ10031-1 - INSTALL (2) SOCKETS # 1433TL IN CENTER & BOTTOM TERM OF CONNECTOR & JUMPER THEM AS SHOWN.
- FOR JJ10031-2 - INSTALL (2) SOCKETS # 1433TL IN TOP & BOTTOM TERM OF CONNECTOR ONLY.



MANUFACTURER: CONN - MOLEX # 1396-R1
 SOCKETS: MOLEX # 1433TL

TMC PT NO'S

JJ10031-1 STOCK NO 250067
 JJ10031-2 STOCK NO 250068

STANDARD		-		-		3 DEC 73		TMC (Canada) LIMITED OTTAWA ONTARIO					
MODEL	PROJECT NO.	ASSEMBY NO.	DATE	STOCK SIZE									
USED ON				MATERIAL		WEIGHT PER PC.		CONNECTOR					
MAXIMUM ALLOWABLE TOLERANCES HAVE BEEN DETERMINED AND DEVIATIONS WILL BE CAUSE FOR REJECTION REMOVE ALL BURRS AND SHARP EDGES				IF IT IS FOUND DESIRABLE TO CHANGE ANY TOLERANCE OR OTHER DETAIL SPECIFIED ON THIS DRAWING NOTIFY THE PURCHASER PROMPTLY.				3 PIN RECEPTACLE					
								TYPE & TEMPER				DRAWN	
TOLERANCES				SCALE				HEAT TREAT. SPEC.					
ALL OTHERS:				DIMENSIONS IN INCHES UNLESS OTHERWISE SPECIFIED				CHECKED				FINAL APPROVAL	
DEC DIM. ± .05				DRILL: PUNCH. COMMERCIAL STOCK SIZES AND MANUFACTURERS TOLERANCES ARE NOT INCLUDED.				JJ10031-				0	
FRAC. DIM. ± 1/64													
ANGULAR DIM. ± 0° 30'													