

IF IT IS FOUND DESIRABLE TO CHANGE ANY TOLERANCE OR OTHER DETAIL SPECIFIED ON THIS DRAWING NOTIFY THE PURCHASER PROMPTLY.		DIMENSIONS IN INCHES UNLESS OTHERWISE SPECIFIED					
MAXIMUM ALLOWABLE TOLERANCES HAVE BEEN DETERMINED AND DEVIATIONS WILL BE CAUSE FOR REJECTION. REMOVE ALL BURRS AND SHARP EDGES.							
ISSUE	ITEM	CHANGED FROM	DATE	CN. NO.	DRAFTS	CHECKER	ENG. APP.
Ø		REL. TO PROD.	SEPT 7/67		RPL		

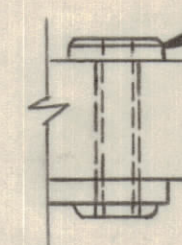
NOTE: 143 SERIES

TABLE "I"

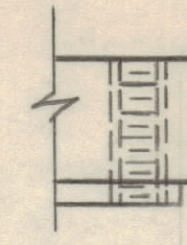
TMC PART NO.	NO. OF CONTACT POSIT'N	A	B	C	D	E	F
JJ10010-1	6	1.779	1.531	1.097	1.239	.781	.156
JJ10010-2	10	2.404	2.156	1.723	1.864	1.406	.156
JJ10010-3	12	2.716	2.468	2.035	2.176	1.718	.156
JJ10010-4	15	3.185	2.937	2.504	2.645	2.187	.156
JJ10010-5	18	3.654	3.406	2.972	3.114	2.656	.156
JJ10010-6	22	4.279	4.031	3.597	3.739	3.281	.156
JJ10010-7	36	6.464	6.210	5.776	5.918	5.460	.156

NOTE: \*.36 CARD SLOT CONTAINS TWO .056 BARRIERS: ONE BETWEEN CONTACTS N & P, AND BETWEEN CONTACTS b & c.

CLEARANCE FOR #4 SCREW



FLOAT BUSHING (107 - DEVIATION)

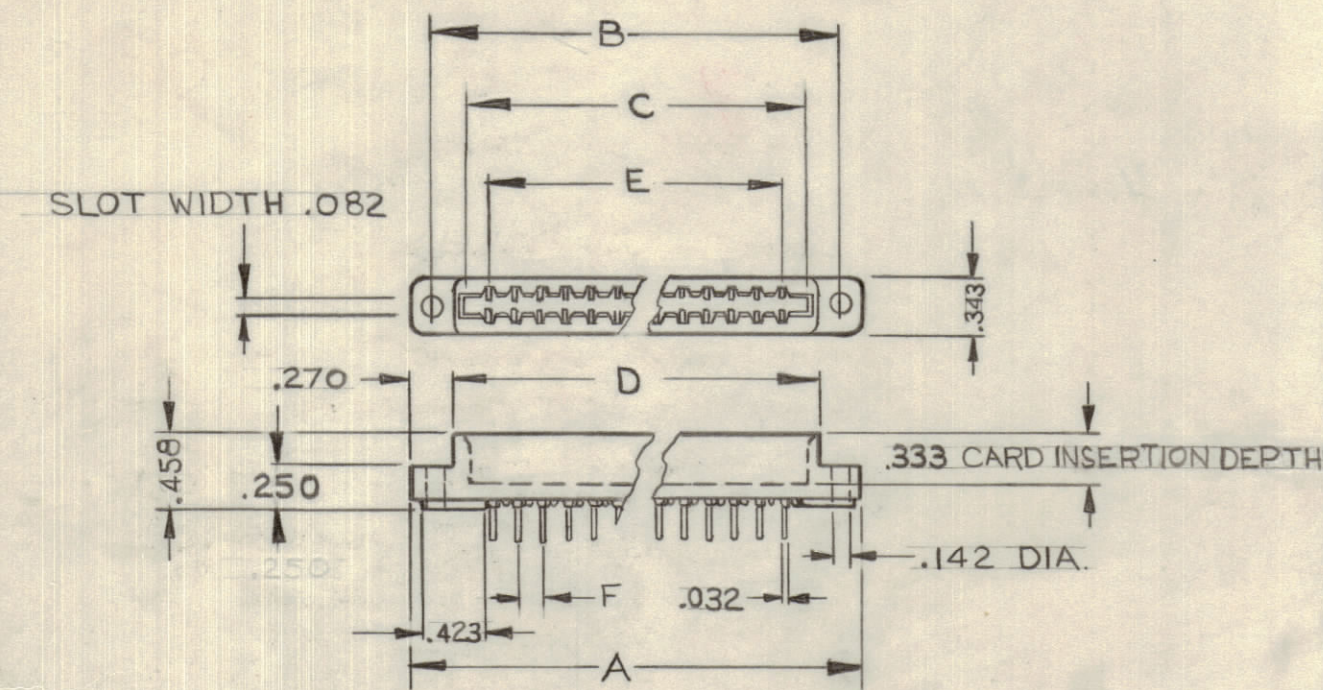


4-40 NC2B TH'D (103 DEVIATION)

COMMON DEVIATIONS

- 101 .0001 MIN. GOLD OVER COPPER CONTACT PLATING
- 102 .00003 MIN. GOLD OVER NICKEL CONTACT PLATING
- 103 (FOR RECEPTACLE) THREADED MOUNTING BUSHING
- 103 (FOR PLUG) END CAPS AND GUIDE PINS GOLD COLORED CHROMATE.
- 107 (FOR RECEPTACLE) STAINLESS STEEL FLOAT BUSHINGS
- 109 (FOR RECEPTACLE) COLOR GREEN INSERT GLASS FILLED PER MIL M-14 TYPE SDGF
- 109 (FOR PLUG) STAINLESS STEEL GUIDE PINS.
- 110 (FOR RECEPTACLE) CARD GUIDE 15 & 22 SIZE

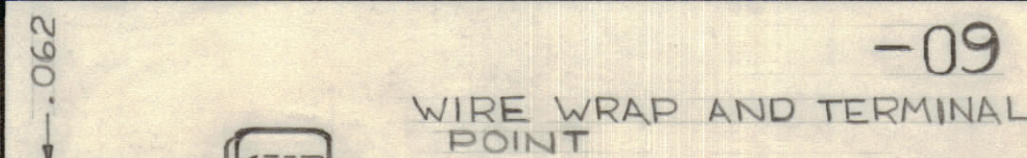
JJ10010 Ø



NOTE: SEE TABLE "I" FOR DIMENSIONS.

NUMBER OF CONTACT POSITIONS	
DIGIT GROUP	NO. OF CONTACTS
006	6
010	10
012	12
015	15
018	18
022	22
036	36

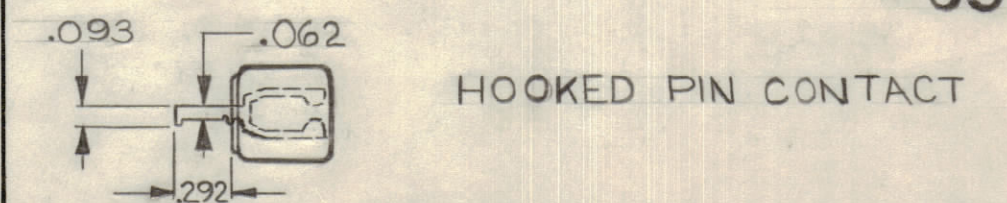
TAIL STYLE -



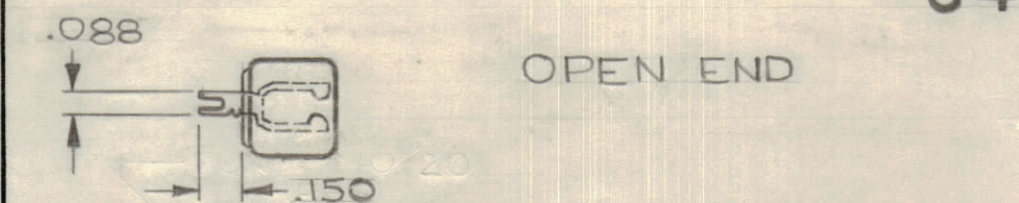
WIRE WRAP AND TERMINAL POINT



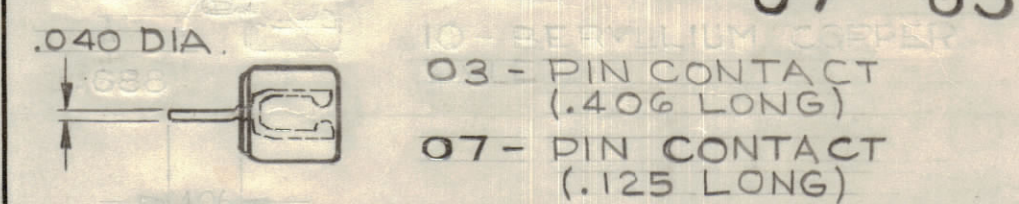
TWISTED OPEN END



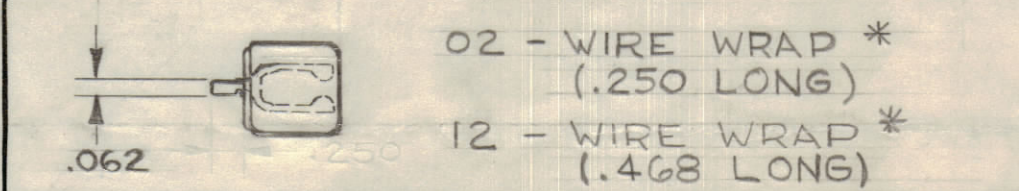
HOOKED PIN CONTACT



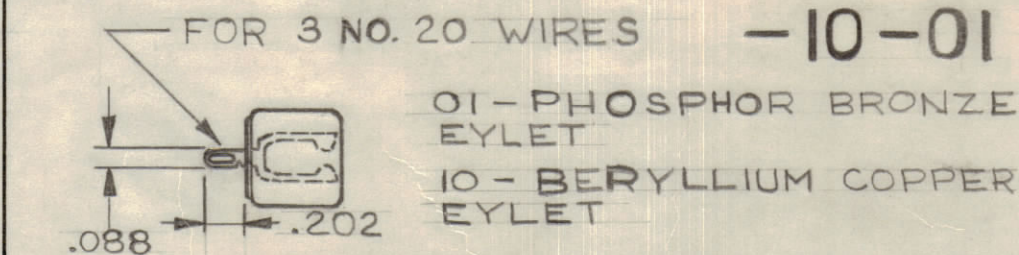
OPEN END



03 - PIN CONTACT (.406 LONG)  
07 - PIN CONTACT (.125 LONG)



02 - WIRE WRAP \* (.250 LONG)  
12 - WIRE WRAP \* (.468 LONG)



01 - PHOSPHOR BRONZE EYLET  
10 - BERYLLIUM COPPER EYLET

STANDARD DRAWING

TMC PART NO.

JJ10010 JJ10010 -015 -01 -107

MFGR NO. S401-71

STOCK SIZE		TMC (Canada) LIMITED OTTAWA ONTARIO	
MATERIAL		CONNECTORS	
WEIGHT PER PC.		P.C. BOARD	
TYPE & TEMPER		AP	
DRAWN		ELEC. DES. APP.	
RPL		MECH. DES. APP.	
HEAT TREAT. SPEC.		CHECKED	
FINISH & SPEC. NO.		MFG APPROVAL	
		JJ10010 Ø	

5 SEPT. 67

MODEL	PROJECT NO.	ASS'Y. NO.	DATE

TOLERANCES		SCALE:
ALL OTHERS	DEC. DIM. ±	DRILL, PUNCH, COMMERCIAL STOCK
	FRAC. DIM. ±	SIZES AND MANUFACTURERS
	ANGULAR DIM. ±	TOLERANCES ARE NOT INCLUDED.