

IF IT IS FOUND DESIRABLE TO CHANGE ANY TOLERANCE OR OTHER DETAIL SPECIFIED ON THIS DRAWING NOTIFY THE PURCHASER PROMPTLY.

STANDARD DRAWING

JJ-10002

MAXIMUM ALLOWABLE TOLERANCES HAVE BEEN DETERMINED AND DEVIATIONS WILL BE CAUSE FOR REJECTION. REMOVE ALL BURRS AND SHARP EDGES

USED ON

MODEL

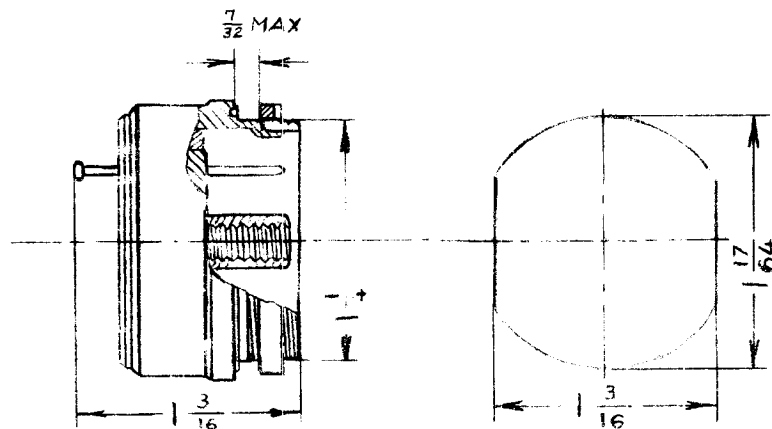
PROJECT NO.

ASS'Y. NO.

DATE

FEB 22/60

TMC PART NO.	MFR NO.	SHELL SIZE	NO. OF CONTACTS	CURRENT RATING	VOLTAGE RATING	TYPE
JJ-10002-1	164-101-2P	SMALL NO.20	2 NO.12	35 AMP	1000V RMS	MALE
JJ-10002-2	164-101-2S	SMALL NO.20	2 NO.12	35 AMP	1000V RMS	FEMALE



TMC PART NO.	MATING PLUG
JJ-10002-1	PL-10002-2
JJ-10002-2	PL-10002-1

AMPHENOL

REQ.	ITEM	PART NO.	DESCRIPTION	SYMBOL
			TMC (Canada) LIMITED OTTAWA ONTARIO	
		STOCK SIZE	CONNECTOR, RECEPTACLE,	
		MATERIAL	WATERPROOF, POWER	
		WEIGHT PER PC.	MK	
		TYPE & TEMPER	DRAWN	ELEC. DES. APP. MECH. DES. APP.
		HEAT TREAT. SPEC.	JPC. LF	
		FINISH & SPEC. NO.	CHECKED	FINAL APPROVAL
				JJ-10002

ISSUE	ITEM	CHANGED FROM	DATE	CN. NO.	DRAFTS	CHECKER	ENG. APP.
TOLERANCES		SCALE 1:1					
ALL OTHERS:		DIMENSIONS IN INCHES UNLESS OTHERWISE SPECIFIED					
DEC. DIM. ±		DRILL, PUNCH, COMMERCIAL STOCK SIZES AND MANUFACTURERS TOLERANCES ARE NOT INCLUDED.					
FRAC. DIM. ±							
ANGULAR DIM. ±							