

IF IT IS FOUND DESIRABLE TO CHANGE ANY TOLERANCE OR OTHER DETAIL SPECIFIED ON THIS DRAWING NOTIFY THE PURCHASER PROMPTLY.

STANDARD DRAWING

JJ-101



MAXIMUM ALLOWABLE TOLERANCES HAVE BEEN DETERMINED AND DEVIATIONS WILL BE CAUSE FOR REJECTION. REMOVE ALL BURRS AND SHARP EDGES

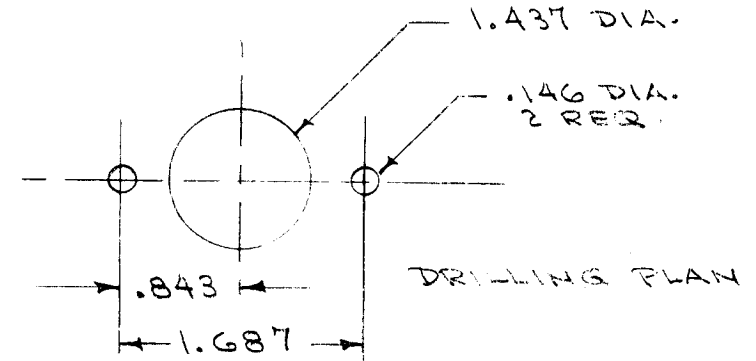
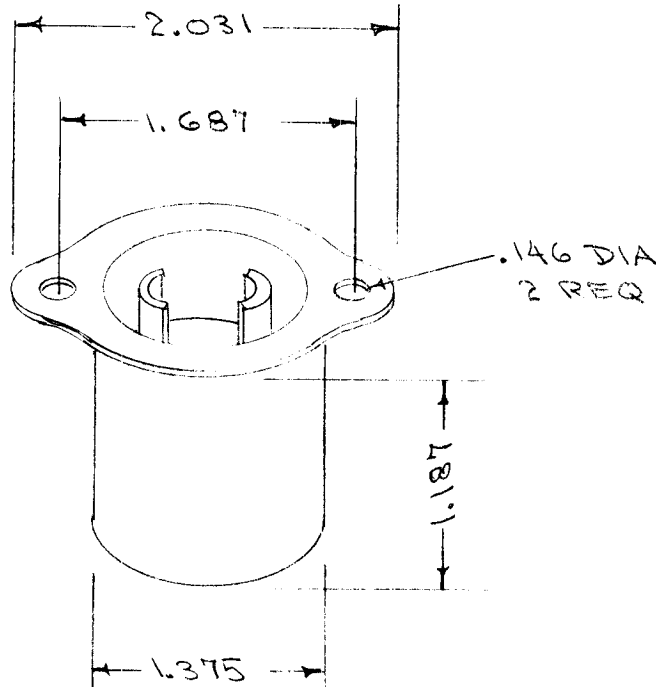
USED ON

MODEL

PROJECT NO.

ASS'Y. NO.

DATE



2 WIRE FLUSH BASE RECEPTACLE. 10 AMPS - 250 VOLTS; 15 AMPS - 125 VOLTS.
METAL CASING PLATED TO WITHSTAND 50 HOUR SALT SPRAY TEST WITHOUT DETERIORATION TO BASE METAL.
INSULATION - BLACK PHENOLIC

REF. HUBBELL MFG. CO. CAT. NO. 6803

REQ.	ITEM	PART NO.	DESCRIPTION	SYMBOL
	#		THE TECHNICAL MATERIEL CORP.	
		STOCK SIZE	MAMARONECK, NEW YORK	
	#	#	RECEPTACLE, MALE	
		MATERIAL	NON-POLARIZED	
		WEIGHT PER PC.		
		TYPE & TEMPER	C.D.D. 12-15-54	
		HEAT TREAT. SPEC.	DRAWN 12-15-54	
		FINISH & SPEC. NO.	CHECKED	FINAL APPROVAL
				JJ-101

✓		ORIGINAL RELEASE					
#	#	REDRAWN, NO CHANGE	1/15/54	#	chris	J.A. R. 101	
ISSUE	ITEM	CHANGED FROM	DATE	CN. NO.	DRAFTS	CHECKER	ENG. APP.

TOLERANCES		SCALE
ALL OTHERS	DEC. DIM. ± FRAC. DIM. ± ANGULAR DIM. ±	DRILL, PUNCH, COMMERCIAL STOCK SIZES AND MANUFACTURERS TOLERANCES ARE NOT INCLUDED.

IF IT IS FOUND DESIRABLE TO CHANGE ANY TOLERANCE OR OTHER DETAIL SPECIFIED ON THIS DRAWING NOTIFY THE PURCHASER PROMPTLY.

JJ-102

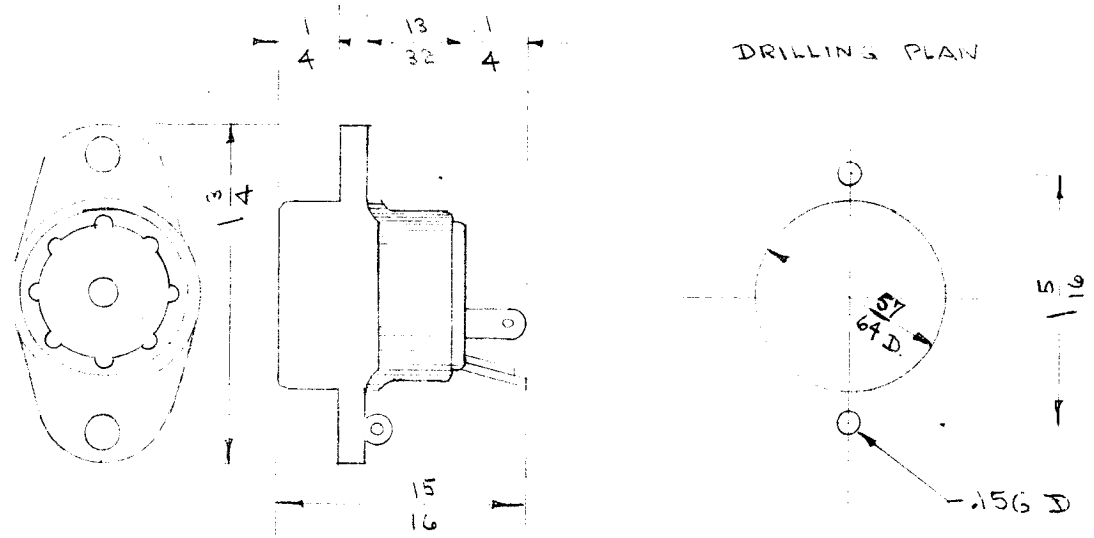


MAXIMUM ALLOWABLE TOLERANCES HAVE BEEN DETERMINED AND DEVIATIONS WILL BE CAUSE FOR REJECTION. REMOVE ALL BURRS AND SHARP EDGES

USED ON

MODEL	PROJECT NO.	ASS'Y. NO.	DATE
MRK-1	102		7-25-52

TMC NO.	CAT. NO.	No. PINS	PIN ARRANGEMENT
JJ-102-1	411	1	
JJ-102-2	412	2	
JJ-102-3	413	3	
JJ-102-4	414	4	
JJ-102-5	415	5	



DIMENSIONS FOR REF. ONLY
REF: ALDEN PRODUCTS CO.

REQ.	ITEM	PART NO.	DESCRIPTION	SYMBOL
			THE TECHNICAL MATERIEL CORP.	
			MAMARONECK, NEW YORK	
			RECEPTACLE, SHIELDED	
			MATERIAL	WEIGHT PER PC.
			TYPE & TEMPER	C.D.D. 1-23-52
			HEAT TREAT. SPEC.	DRAWN
			FINISH & SPEC. NO.	ELEC. DES. APP. MECH. DES. APP.
				FINAL APPROVAL
				JJ-102

<input checked="" type="checkbox"/>	ORIGINAL RELEASE	1-23-52	C.D.D.	JAD	PJB		
	REDRAWN NO CHANGE						
ISSUE	ITEM	CHANGED FROM	DATE	CN. NO.	DRAFTS	CHECKER	ENG. APP.
TOLERANCES		SCALE 1/4					
ALL OTHERS	DEC. DIM. ±	DRILL, PUNCH, COMMERCIAL STOCK SIZES AND MANUFACTURERS TOLERANCES ARE NOT INCLUDED.					
	FRAC. DIM. ±						
	ANGULAR DIM. ±						

IF IT IS FOUND DESIRABLE TO CHANGE ANY TOLERANCE OR OTHER DETAIL SPECIFIED ON THIS DRAWING NOTIFY THE PURCHASER PROMPTLY.

STANDARD DRAWING

JJ114

K

MAXIMUM ALLOWABLE TOLERANCES HAVE BEEN DETERMINED AND DEVIATIONS WILL BE CAUSE FOR REJECTION. REMOVE ALL BURRS AND SHARP EDGES

USED ON

MODEL	PROJECT NO.	ASS'Y. NO.	DATE
-------	-------------	------------	------

TMC NO	CAT. NO	BODY COLOR
JJ 114 -1	105-201-200	WHITE
JJ 114-2	105-202-200	RED
JJ 114-3	105-203-200	BLACK

INTERNAL TOOTH LOCKWASHER
13/32 OD., .017-.026 THK

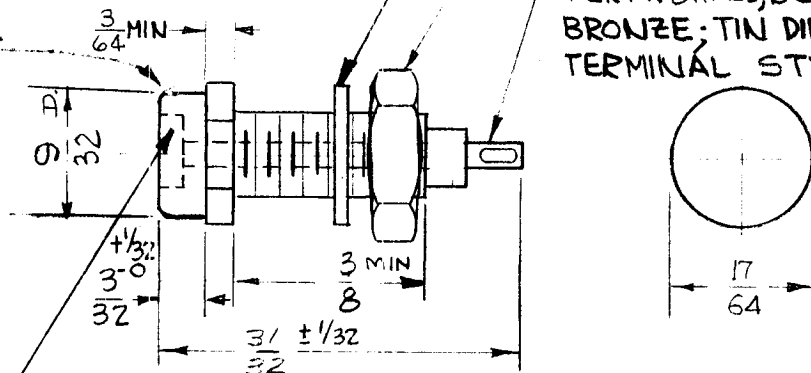
1/4 x 32 NEF-2 HEX NUT, NICKEL PLATED BRASS
11/32 ACROSS FLATS x 1/8 THK.

TERM-BRASS, BERYLLIUM COPPER OR PHOSPHOR BRONZE; TIN DIPPED GOLD OR SILVER PLATE.
TERMINAL STYLE - OPTIONAL.

NYLON BODY WITH NICKEL PLATED BRASS JACKET.

VOLTAGE BREAKDOWN —

1500 V. RMS
CAPACITY TO 1/8" PANEL-
3.8 PF (REF. ONLY.)
DESIGNED TO ACCEPT A TEST
PLUG .080 ± .001" IN DIA.



DRILLING PLAN

CONTACT-PHOSPHOR BRONZE OR BERYLLIUM COPPER, SILVER PLATED OR GOLD WASHED.

DIMENSIONS FOR REF. ONLY
REF: MIL-STD-242 (PART II SECT. 1406) & MS16108C
(Mates with TMC Type PL 163)

REQ.	ITEM	PART NO.	DESCRIPTION	SYMBOL
			THE TECHNICAL MATERIEL CORP. MAMARONECK, NEW YORK	
		STOCK SIZE	JACK, TIP	
		MATERIAL WEIGHT PER PC.	LOW VOLTAGE	
		TYPE & TEMPER	7-14-57 G.T.O.	
		HEAT TREAT. SPEC.	DRAWN EMB	ELEC. DES. APP. G.T.O.
		FINISH & SPEC. NO.	CHECKED	MECH. DES. APP.
TOLERANCES			SCALE S401-47 CODE: B	
ALL OTHERS			DRILL, PUNCH, COMMERCIAL STOCK SIZES AND MANUFACTURERS TOLERANCES ARE NOT INCLUDED.	
DEC. DIM. ±			FINAL APPROVAL	
FRAC. DIM. ± 1/32			JJ114	
ANGULAR DIM. ±			K	

IF IT IS FOUND DESIRABLE TO CHANGE ANY TOLERANCE OR OTHER DETAIL SPECIFIED ON THIS DRAWING NOTIFY THE PURCHASER PROMPTLY.

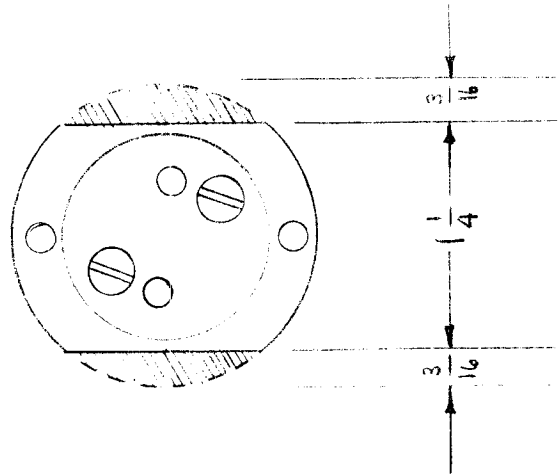
RELEASED

JJ-115

MAXIMUM ALLOWABLE TOLERANCES HAVE BEEN DETERMINED AND DEVIATIONS WILL BE CAUSE FOR REJECTION. REMOVE ALL BURRS AND SHARP EDGES

USED ON

MODEL	PROJECT NO.	ASS'Y. NO.	DATE
FFR	104	A-166	10-2-52
MSR 1			4-23-57



REMOVE SHADED AREAS AS SHOWN FROM JJ-100-A AND COAT CUT EDGES WITH 3/16"

REQ.	ITEM	PART NO.	DESCRIPTION	SYMBOL
			THE TECHNICAL MATERIEL CORP. MAMARONECK. NEW YORK	
		STOCK SIZE	RECEPTACLE, MODIFIED.	
		MATERIAL	WEIGHT PER PC.	
		TYPE & TEMPER		
		HEAT TREAT. SPEC.		
		FINISH & SPEC. NO.		
			CD.D 10-1-52	
			DRAWN	ELEC. DES. APP. MECH. DES. APP.
			Amf 10/2/52	
			CHECKED	FINAL APPROVAL
				JJ-115

ISSUE	ITEM	CHANGED FROM	DATE	CN. NO.	DRAFTS	CHECKER	ENG. APP.
TOLERANCES			SCALE FULL				
ALL OTHERS	DEC. DIM. ± FRAC. DIM. ± ANGULAR DIM. ±		DRILL, PUNCH, COMMERCIAL STOCK SIZES AND MANUFACTURERS TOLERANCES ARE NOT INCLUDED.				

IF IT IS FOUND DESIRABLE TO CHANGE ANY TOLERANCE OR OTHER DETAIL SPECIFIED ON THIS DRAWING NOTIFY THE PURCHASER PROMPTLY.

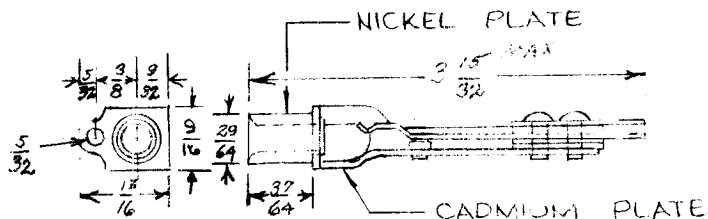
STANDARD DRAWING

JJ 116 C

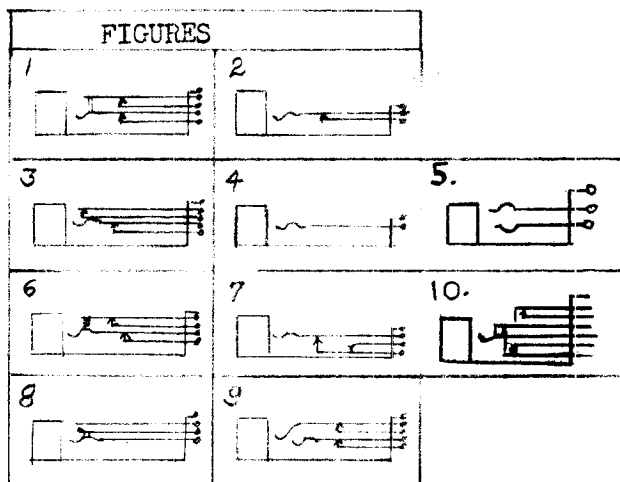
MAXIMUM ALLOWABLE TOLERANCES HAVE BEEN DETERMINED AND DEVIATIONS WILL BE CAUSE FOR REJECTION. REMOVE ALL BURRS AND SHARP EDGES

USED ON

MODEL PROJECT NO. ASS'Y. NO. DATE



TMC #	ADC #	FIGURE
JJ-116-1	PJ-116	1
JJ-116-2	PJ-318	2
JJ-116-3	PJ-125	3
JJ-116-4	PJ-123	4
JJ-116-5	PJ-238	5
JJ-116-6	PJ-117	6
JJ-116-7	PJ-203	7
JJ-116-8	PJ-115	8
JJ-116-9	PJ-638	9 Sleeve & Tip.
JJ-116-10	PJ-339	9 Sleeve, Tip & Ring.
JJ-116-11	PJ-338	10



Specifications:
 Frame; Steel,
 Springs; Nickel Silver.
 Contacts; Silver Alloy.
 Terminals; Tinned.

Dim. for Ref. Only
 Ref. Audio Development Co.

REQ.	ITEM	PART NO.	DESCRIPTION	SYMBOL
			THE TECHNICAL MATERIEL CORP. MAMARONECK. NEW YORK	
		STOCK SIZE		
			JACK-TELEPHONE, TYPE	
		MATERIAL	WEIGHT PER PC.	
		TYPE & TEMPER		
		HEAT TREAT. SPEC.		
		FINISH & SPEC. NO.		
			DRAWN	ELEC. DES. APP.
			CHECKED	FINAL APPROVAL
				JJ 116 C

ISSUE	ITEM	CHANGED FROM	DATE	CN. NO.	DRAFTS	CHECKER	ENG. APP.
C		JJ116-11 & FIG 10 ADD	7-9-75	21232	G.D.L.		
B		NICKEL & CADMIUM PL ADD	6.20.66	16431	WHD		
A	1	JJ116-5 & FIG. 5 Added	3-27-61	4493	MAF		

TOLERANCES	SCALE
ALL OTHERS DEC. DIM. ± FRAC. DIM. ± ANGULAR DIM. ±	DRILL, PUNCH, COMMERCIAL STOCK SIZES AND MANUFACTURERS TOLERANCES ARE NOT INCLUDED.

IF IT IS FOUND DESIRABLE TO CHANGE ANY TOLERANCE OR OTHER DETAIL SPECIFIED ON THIS DRAWING NOTIFY THE PURCHASER PROMPTLY.

STANDARD DRAWING

JJ-117 | A

MAXIMUM ALLOWABLE TOLERANCES HAVE BEEN DETERMINED AND DEVIATIONS WILL BE CAUSE FOR REJECTION. REMOVE ALL BURRS AND SHARP EDGES

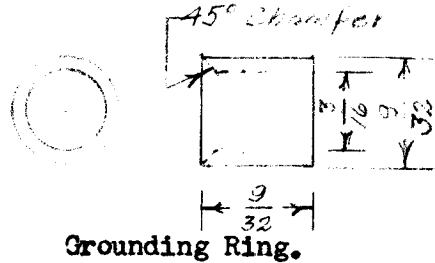
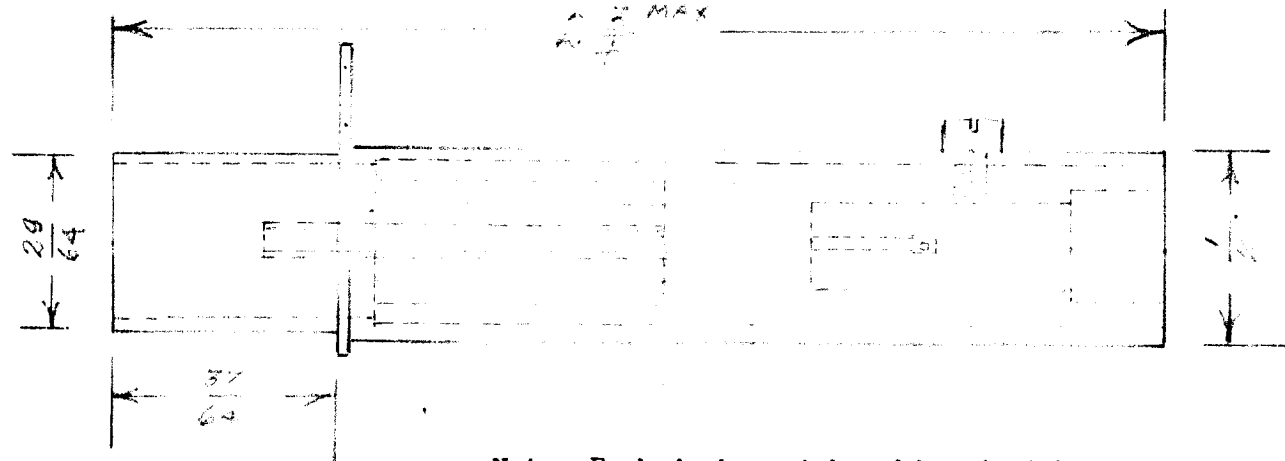
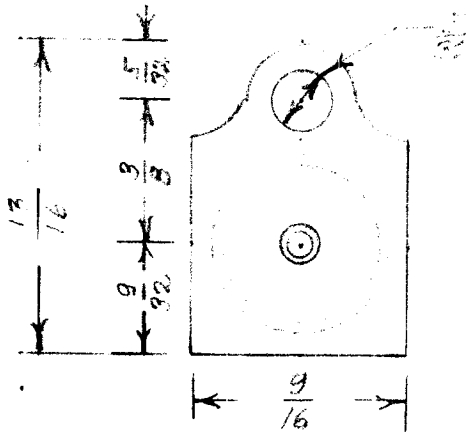
USED ON

MODEL

PROJECT NO.

ASS'Y. NO.

DATE



Note: Each jack must be shipped with its grounding ring.

Dem. for Ref. Only. (See A-479 Sub-Ass'y.)
Ref. National Electrical Machine Shops. Part No. 964

REQ.	ITEM	PART NO.	DESCRIPTION	SYMBOL
		//	THE TECHNICAL MATERIEL CORP. MAMARONECK, NEW YORK	
		STOCK SIZE		
		//	JACK-VIDEO, TYPE	
		MATERIAL	WEIGHT PER PC.	
		//		
		TYPE & TEMPER	10/28/52	
		//	DRAWN	ELEC. DES. APP. MECH. DES. APP.
			10-29-52 CDD	
		HEAT TREAT. SPEC.	CHECKED	FINAL APPROVAL
		SILVER PLATE		JJ-117 A
		FINISH & SPEC. NO.		

ISSUE	1 ST EM	CHANGED FROM	DATE	CN. NO.	DRAFTS	CHECKER	ENG. APP.
-------	--------------------	--------------	------	---------	--------	---------	-----------

TOLERANCES		SCALE	DRILL, PUNCH, COMMERCIAL STOCK SIZES AND MANUFACTURERS TOLERANCES ARE NOT INCLUDED.
ALL OTHERS	DEC. DIM. ± FRAC. DIM. ± ANGULAR DIM. ±	//	

IF IT IS FOUND DESIRABLE TO CHANGE ANY TOLERANCE OR OTHER DETAIL SPECIFIED ON THIS DRAWING NOTIFY THE PURCHASER PROMPTLY.

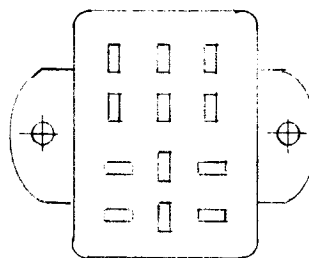
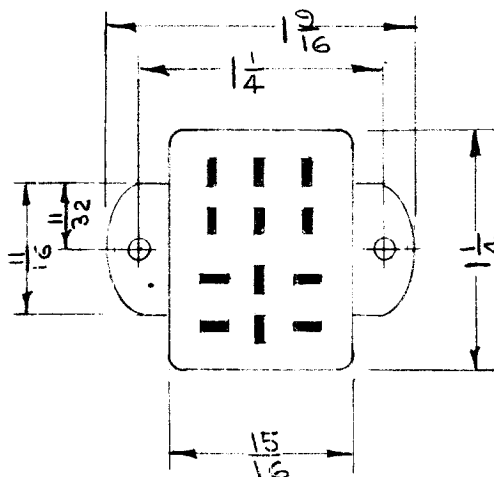
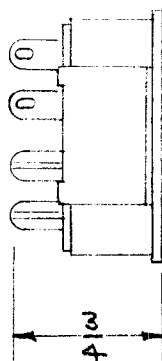
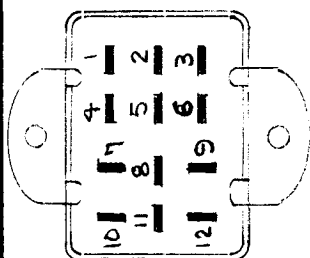
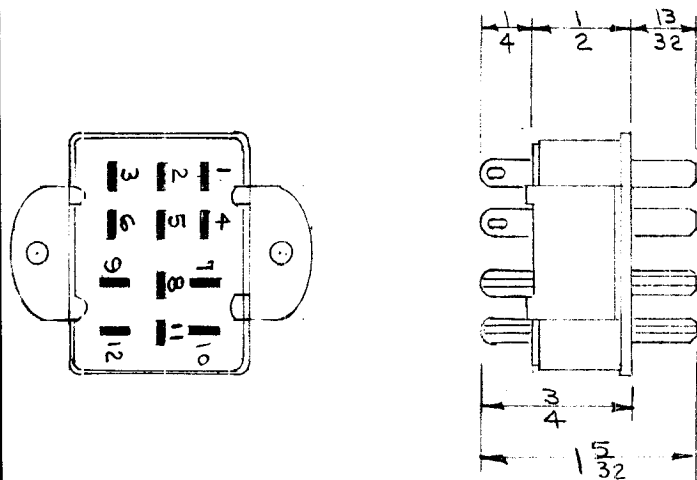
STANDARD DRAWING

JJ-118

MAXIMUM ALLOWABLE TOLERANCES HAVE BEEN DETERMINED AND DEVIATIONS WILL BE CAUSE FOR REJECTION. REMOVE ALL BURRS AND SHARP EDGES

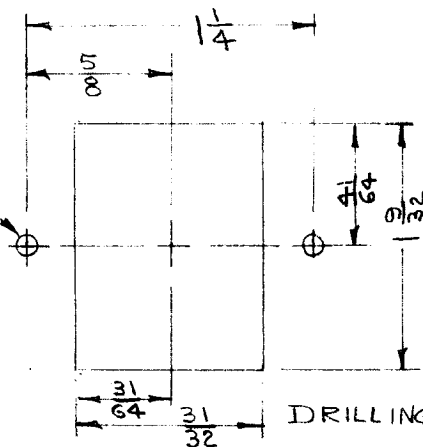
USED ON

MODEL	PROJECT NO.	ASS'Y. NO.	DATE
-------	-------------	------------	------



5/32 D (156)
2 HOLES

TMC NO	CINCH	TYPE
JJ-118-1	P-312-AB	MALE
JJ-118-2	S-312-AB	FEMALE



DRILLING PLAN

REF: CINCH MFG. CORP.

DIMENSIONS FOR REF. ONLY

REQ.	ITEM	PART NO.	DESCRIPTION	SYMBOL
			THE TECHNICAL MATERIEL CORP. MAMARONECK. NEW YORK	
		STOCK SIZE	RECEPTACLE	
		MATERIAL	12 PRONG	
		WEIGHT PER PC.		
		TYPE & TEMPER	11/10/52	G.T.O
			DRAWN	ELEC. DES. APP. MECH. DES. APP.
		HEAT TREAT. SPEC.	11/10	
		FINISH & SPEC. NO.	CHECKED	FINAL APPROVAL
				JJ-118

ISSUE	ITEM	CHANGED FROM	DATE	CN. NO.	DRAFTS	CHECKER	ENG. APP.
TOLERANCES			SCALE				
ALL OTHERS	DEC. DIM. ± FRAC. DIM. ± ANGULAR DIM. ±		DRILL, PUNCH, COMMERCIAL STOCK SIZES AND MANUFACTURERS TOLERANCES ARE NOT INCLUDED.				

IF IT IS FOUND DESIRABLE TO CHANGE ANY TOLERANCE OR OTHER DETAIL SPECIFIED ON THIS DRAWING NOTIFY THE PURCHASER PROMPTLY.

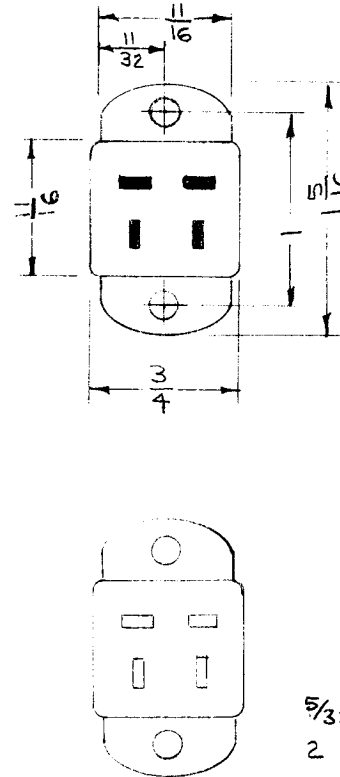
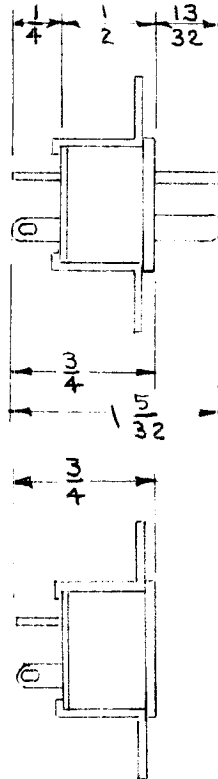
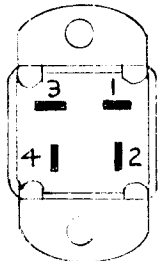
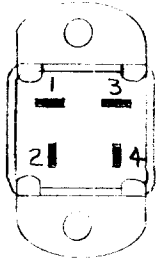
STANDARD DRAWING

JJ-120

MAXIMUM ALLOWABLE TOLERANCES HAVE BEEN DETERMINED AND DEVIATIONS WILL BE CAUSE FOR REJECTION.
REMOVE ALL BURRS AND SHARP EDGES

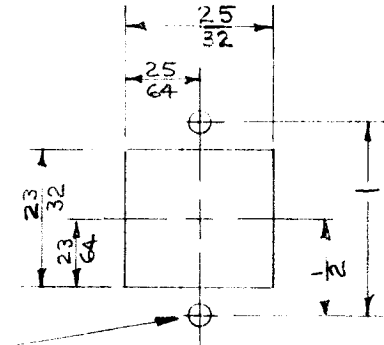
USED ON

MODEL	PROJECT NO.	ASS'Y. NO.	DATE
-------	-------------	------------	------



5/32D (-156)
2 HOLES

TMC-NO	CINCH	TYPE
JJ-120-1	P-304-AB	MALE
JJ-120-2	S-304-AB	FEMALE



DRILLING PLAN

DIMENSIONS FOR REF. ONLY

REF: CINCH MFG. CORP.

REQ.	ITEM	PART NO.	DESCRIPTION	SYMBOL
			THE TECHNICAL MATERIEL CORP. MAMARONECK. NEW YORK	
STOCK SIZE			RECEPTACLE	
MATERIAL			4 PRONG	
WEIGHT PER PC.				
TYPE & TEMPER				
DRAWN			ELEC. DES. APP.	MECH. DES. APP.
HEAT TREAT. SPEC.			CHECKED	FINAL APPROVAL
FINISH & SPEC. NO.			JJ-120	

ISSUE	ITEM	CHANGED FROM	DATE	CN. NO.	DRAFTS	CHECKER	ENG. APP.
TOLERANCES			SCALE				
ALL OTHERS			DRILL, PUNCH, COMMERCIAL STOCK SIZES AND MANUFACTURERS TOLERANCES ARE NOT INCLUDED.				

IF IT IS FOUND DESIRABLE TO CHANGE ANY TOLERANCE OR OTHER DETAIL SPECIFIED ON THIS DRAWING NOTIFY THE PURCHASER PROMPTLY.

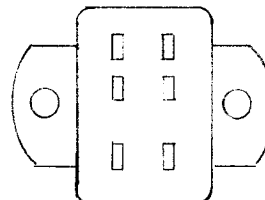
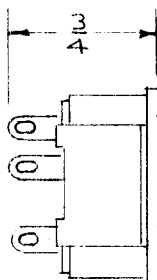
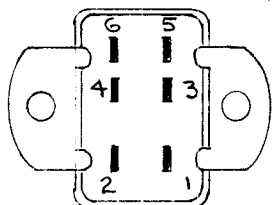
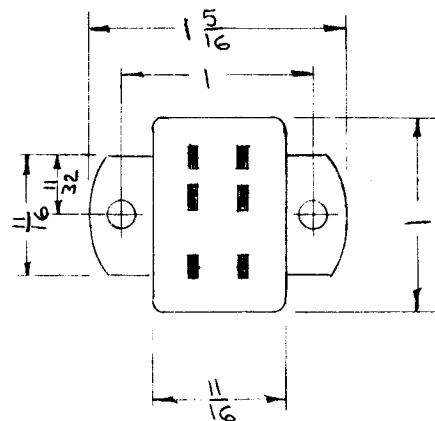
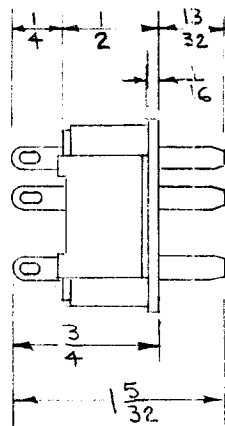
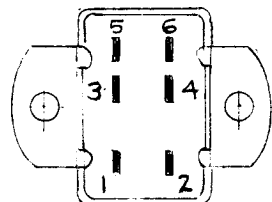
STANDARD DRAWING

JJ-121 | A

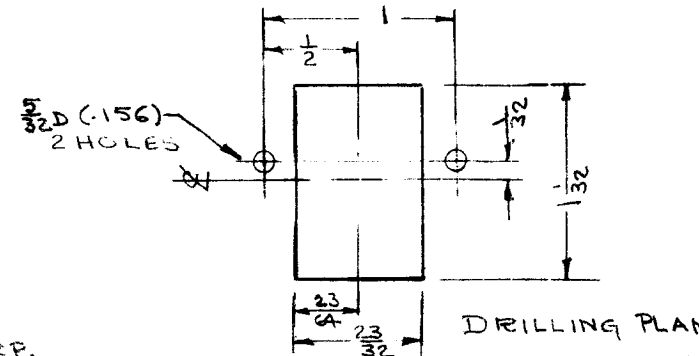
MAXIMUM ALLOWABLE TOLERANCES HAVE BEEN DETERMINED AND DEVIATIONS WILL BE CAUSE FOR REJECTION. REMOVE ALL BURRS AND SHARP EDGES

USED ON

MODEL	PROJECT NO.	ASS'Y. NO.	DATE
-------	-------------	------------	------



TMC NO	CINCH NO	TYPE
JJ-121-1	F-306-AB	MALE
JJ-121-2	S-306-AB	FEMALE



DIMENSIONS FOR REF. ONLY

REF: CINCH MFG. CORP.

REQ.	ITEM	PART NO.	DESCRIPTION	SYMBOL
			THE TECHNICAL MATERIEL CORP.	
			MAMARONECK, NEW YORK	
STOCK SIZE			RECEPTACLE	
MATERIAL			6 PRONG	
WEIGHT PER PC.				
TYPE & TEMPER			JAR 11/7/52	G.T.D. <i>[Signature]</i>
HEAT TREAT. SPEC.			WSP 11/10/52	<i>[Signature]</i>
FINISH & SPEC. NO.			CHECKED	FINAL APPROVAL
			JJ-121 A	

A	1	1/32 was d	7/27/53	1	JAR	<i>[Signature]</i>	
ISSUE	ITEM	CHANGED FROM	DATE	CN. NO.	DRAFTS	CHECKER	ENG. APP.
TOLERANCES			SCALE <i>[Signature]</i>				
ALL OTHERS			DEC. DIM. ± FRAC. DIM. ± ANGULAR DIM. ±				
			DRILL, PUNCH, COMMERCIAL STOCK SIZES AND MANUFACTURERS TOLERANCES ARE NOT INCLUDED.				

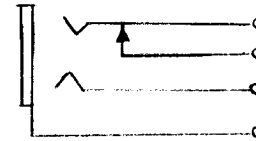
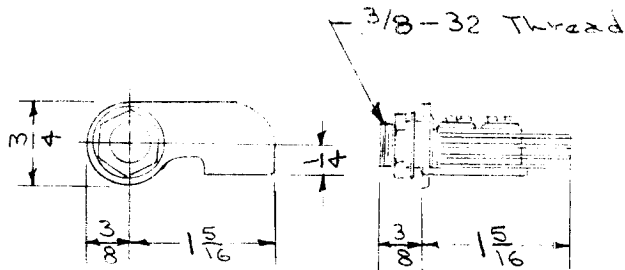
IF IT IS FOUND DESIRABLE TO CHANGE ANY TOLERANCE OR OTHER DETAIL SPECIFIED ON THIS DRAWING NOTIFY THE PURCHASER PROMPTLY.

JJ-125 \emptyset

MAXIMUM ALLOWABLE TOLERANCES HAVE BEEN DETERMINED AND DEVIATIONS WILL BE CAUSE FOR REJECTION. REMOVE ALL BURRS AND SHARP EDGES

USED ON

MODEL	PROJECT NO.	ASS'Y. NO.	DATE
SFO-2			



Ref: P. R. Mallory & Co. 703B

REQ.	ITEM	PART NO.	DESCRIPTION	SYMBOL
			THE TECHNICAL MATERIEL CORP.	
STOCK SIZE			MAMARONECK. NEW YORK	
MATERIAL			JACK, TELEPHONE	
WEIGHT PER PC.				
TYPE & TEMPER				
HEAT TREAT. SPEC.				
FINISH & SPEC. NO.				

ISSUE	ITEM	CHANGED FROM	DATE	CN. NO.	DRAFTS	CHECKER	ENG. APP.
\emptyset		ORIGINAL RELEASE					
TOLERANCES		SCALE					
ALL OTHERS	DEC. DIM. \pm FRAC. DIM. \pm ANGULAR DIM. \pm	DRILL, PUNCH, COMMERCIAL STOCK SIZES AND MANUFACTURERS TOLERANCES ARE NOT INCLUDED.					

JADe 5/28/53
 DRAWN
 ELEC. DES. APP.
 MECH. DES. APP.
 CHECKED
 FINAL APPROVAL
 JJ-125 \emptyset

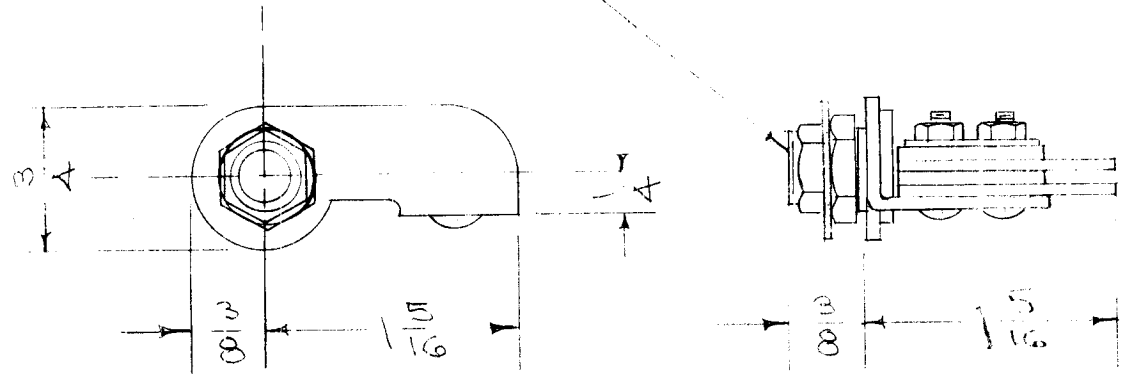
IF IT IS FOUND DESIRABLE TO CHANGE ANY TOLERANCE OR OTHER DETAIL SPECIFIED ON THIS DRAWING NOTIFY THE PURCHASER PROMPTLY.

JJ-126 A

MAXIMUM ALLOWABLE TOLERANCES HAVE BEEN DETERMINED AND DEVIATIONS WILL BE CAUSE FOR REJECTION. REMOVE ALL BURRS AND SHARP EDGES

REQ. PER UNIT	USED ON			
	MODEL	PROJECT NO.	ASS'Y. NO.	DATE
1	SF0-2			
1	322			7-18-55

3/8 X 3" T-READ



JUNIOR

REF: P. R. MALBRY & CO. CAT. No. 701

REQ.	ITEM	PART NO.	DESCRIPTION	SYMBOL
			THE TECHNICAL MATERIEL CORP.	
STOCK SIZE			MAMARONECK. NEW YORK	
			JACK, TELEPHONE	
MATERIAL		WEIGHT PER PC.		
			DD 7-18-55	
TYPE & TEMPER			DRAWN	MECH. DES. APP.
			CHECKED	FINAL APPROVAL
HEAT TREAT. SPEC.				
FINISH & SPEC. NO.				

ISSUE	ITEM	CHANGED FROM	DATE	CN. NO.	DRAFTS	CHECKER	ENG. APP.
A	1	COMPLETE REVISION	7/18/55		CAF	John Wick	

TOLERANCES		SCALE
ALL OTHERS	DEC. DIM. ± FRAC. DIM. ± ANGULAR DIM. ±	DRILL, PUNCH, COMMERCIAL STOCK SIZES AND MANUFACTURERS TOLERANCES ARE NOT INCLUDED.

JJ-126 A

IF IT IS FOUND DESIRABLE TO CHANGE ANY TOLERANCE OR OTHER DETAIL SPECIFIED ON THIS DRAWING NOTIFY THE PURCHASER PROMPTLY.

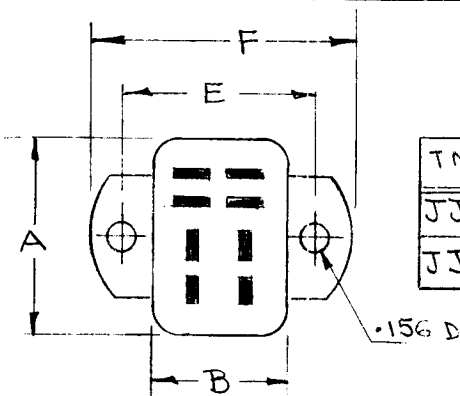
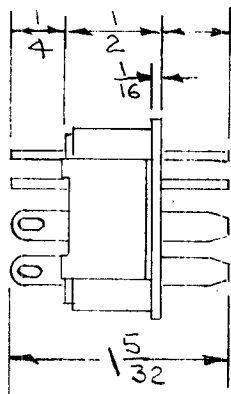
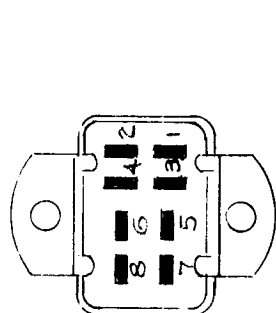
STANDARD DRAWING

JJ-127 | A

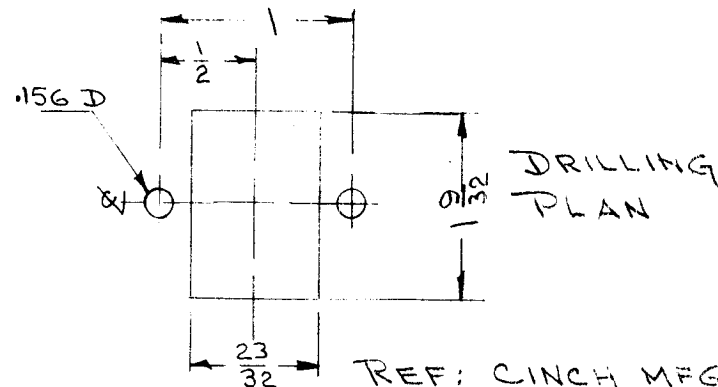
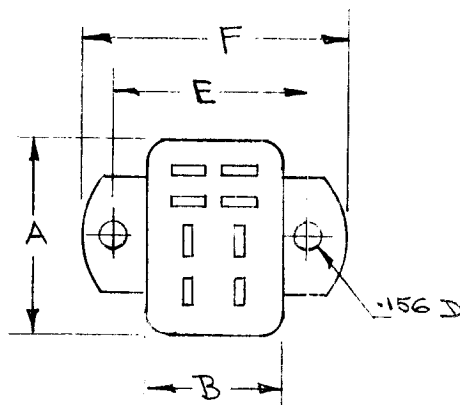
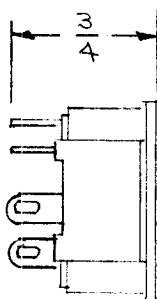
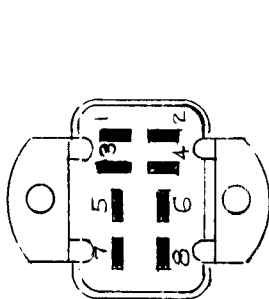
MAXIMUM ALLOWABLE TOLERANCES HAVE BEEN DETERMINED AND DEVIATIONS WILL BE CAUSE FOR REJECTION. REMOVE ALL BURRS AND SHARP EDGES

USED ON

MODEL	PROJECT NO.	ASS'Y. NO.	DATE
-------	-------------	------------	------



TMC NO	CINCH NO	TYPE	A	B	E	F
JJ-127-1	P-308AB	MALE	1/4	11/16	1	15/16
JJ-127-2	S-308AB	FEMALE	1/4	11/16	1	15/16



NOTE
Dimensions For REF ONLY
Mating Plug - PL-116

REQ.	ITEM	PART NO.	DESCRIPTION	SYMBOL
			THE TECHNICAL MATERIEL CORP.	
			MAMARONECK. NEW YORK	
			RECEPTACLE	
			8 PRONG	
			DRAWN 7-27-53	
			ELEC. DES. APP. MECH. DES. APP.	
			CHECKED FINAL APPROVAL	
			JJ-127 A	

ISSUE	ITEM	CHANGED FROM	DATE	CN. NO.	DRAFTS	CHECKER	ENG. APP.
A	1	POSITIONS CORRECTED	2-20-56	1			

TOLERANCES		SCALE
ALL OTHERS	DEC. DIM. ± FRAC. DIM. ± ANGULAR DIM. ±	DRILL, PUNCH, COMMERCIAL STOCK SIZES AND MANUFACTURERS TOLERANCES ARE NOT INCLUDED.

IF IT IS FOUND DESIRABLE TO CHANGE ANY TOLERANCE OR OTHER DETAIL SPECIFIED ON THIS DRAWING NOTIFY THE PURCHASER PROMPTLY.

JJ-128

MAXIMUM ALLOWABLE TOLERANCES HAVE BEEN DETERMINED AND DEVIATIONS WILL BE CAUSE FOR REJECTION. REMOVE ALL BURRS AND SHARP EDGES

USED ON

MODEL

PROJECT NO.

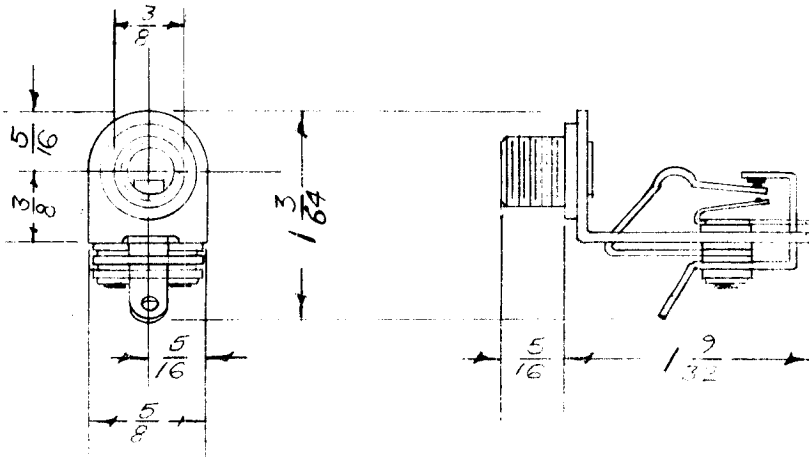
ASS'Y. NO.

DATE

RSC

170

9-21-53



DIMENSIONS FOR REF. ONLY

REF: P. R. MALLOY & CO., INC. - NO. A3A

REQ.	ITEM	PART NO.	DESCRIPTION	SYMBOL
		---	THE TECHNICAL MATERIEL CORP. MAMARONECK. NEW YORK	
		STOCK SIZE		
		---	JACK MIDGET	
		MATERIAL		
		WEIGHT PER PC.		

		TYPE & TEMPER	16 7-21-53	G.T.O. W.C.
		---	DRAWN	ELEC. DES. APP. MECH. DES. APP.
		HEAT TREAT. SPEC.	JAD	G.T.O.
		---	CHECKED	FINAL APPROVAL
		FINISH & SPEC. NO.		JJ-128

ISSUE ITEM CHANGED FROM DATE CN. NO. DRAFTS CHECKER ENG. APP.

TOLERANCES

SCALE

ALL OTHERS:

DEC. DIM. ±
FRAC. DIM. ±
ANGULAR DIM. ±

DRILL, PUNCH, COMMERCIAL STOCK SIZES AND MANUFACTURERS TOLERANCES ARE NOT INCLUDED.

IF IT IS FOUND DESIRABLE TO CHANGE ANY TOLERANCE OR OTHER DETAIL SPECIFIED ON THIS DRAWING NOTIFY THE PURCHASER PROMPTLY.

JJ-130

MAXIMUM ALLOWABLE TOLERANCES HAVE BEEN DETERMINED AND DEVIATIONS WILL BE CAUSE FOR REJECTION. REMOVE ALL BURRS AND SHARP EDGES

REQ. PER UNIT

USED ON

MODEL

PROJECT NO.

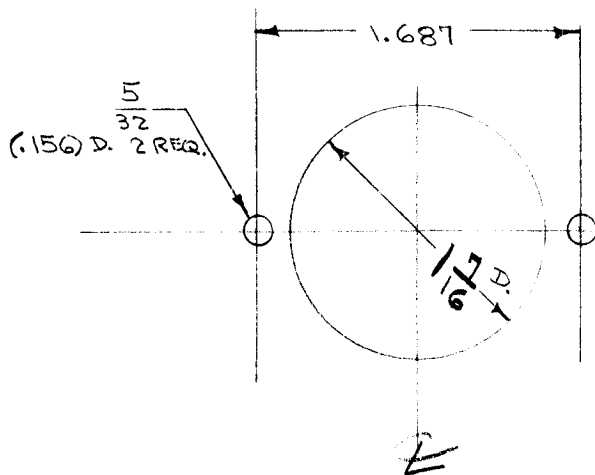
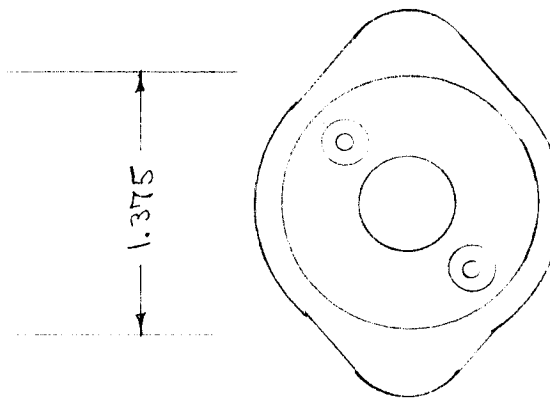
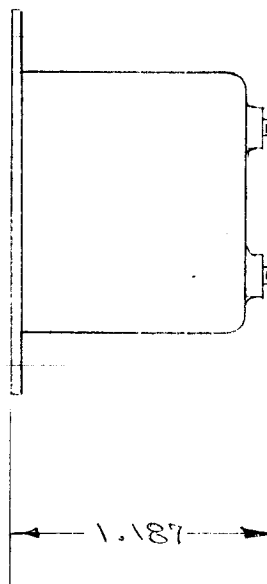
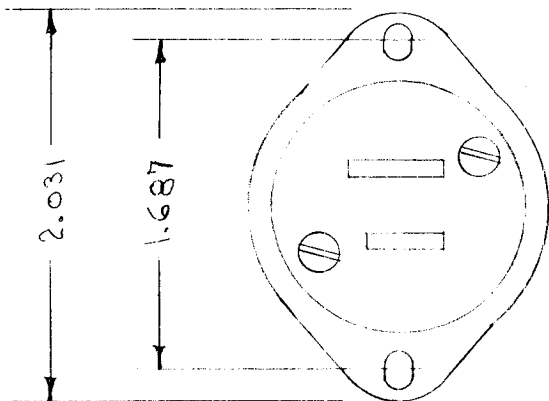
ASS'Y. NO.

DATE

1

DCP-1

3-4-54



REF. HARVEY HUBBELL, INC. NO. 9819

REQ.	ITEM	PART NO.	DESCRIPTION	SYMBOL
			THE TECHNICAL MATERIEL CORP. MAMARONECK. NEW YORK	
		STOCK SIZE	CONNECTOR, RECEPTACLE	
		MATERIAL	WEIGHT PER PC.	
		TYPE & TEMPER	C.D.D. 3-4-54	
		HEAT TREAT. SPEC.	DRAWN	ELEC. DES. APP. MECH. DES. APP.
		FINISH & SPEC. NO.	CHECKED	FINAL APPROVAL

ISSUE	ITEM	CHANGED FROM	DATE	CN. NO.	DRAFTS	CHECKER	ENG. APP.
-------	------	--------------	------	---------	--------	---------	-----------

TOLERANCES		SCALE
ALL OTHERS:	DEC. DIM. ± FRAC. DIM. ± ANGULAR DIM. ±	DRILL, PUNCH, COMMERCIAL STOCK SIZES AND MANUFACTURERS TOLERANCES ARE NOT INCLUDED.

JJ-130

IF IT IS FOUND DESIRABLE TO CHANGE ANY TOLERANCE OR OTHER DETAIL SPECIFIED ON THIS DRAWING NOTIFY THE PURCHASER PROMPTLY.

JJ-131

MAXIMUM ALLOWABLE TOLERANCES HAVE BEEN DETERMINED AND DEVIATIONS WILL BE CAUSE FOR REJECTION. REMOVE ALL BURRS AND SHARP EDGES

STANDARD DRAWING

REQ. PER UNIT

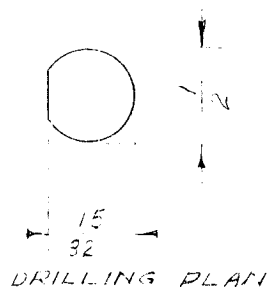
USED ON

MODEL

PROJECT NO.

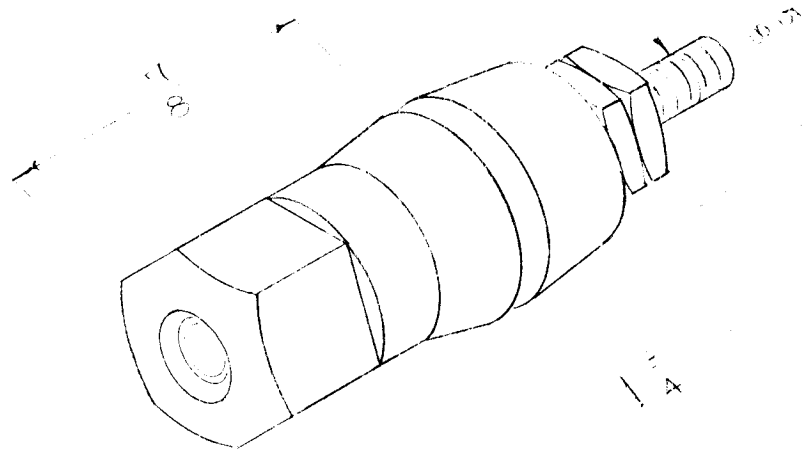
ASS'Y. NO.

DATE



10-32 STUD

DRILLING PLAN



COLOR

B - BLACK

R - RED

TYPE DESIGNATION TO BE IN FOLLOWING FORM

JJ 131 - B

STYLE NO. BLACK

DIMENSIONS FOR REF. ONLY.

REF. SUPERIOR ELECTRIC CO., BRISTOL CONN. (#DF30)

REQ.	ITEM	PART NO.	DESCRIPTION	SYMBOL
			THE TECHNICAL MATERIEL CORP. MAMARONECK, NEW YORK	
		STOCK SIZE	BINDING POST	
		MATERIAL	WEIGHT PER PC.	
		TYPE & TEMPER	K2	Wc
			DRAWN	ELEC. DES. APP. MECH. DES. APP.
			CHECKED	K2
		HEAT TREAT. SPEC.	CHECKED	FINAL APPROVAL
		FINISH & SPEC. NO.	JJ-131	

ISSUE	ITEM	CHANGED FROM	DATE	CN. NO.	DRAFTS	CHECKER	ENG. APP.

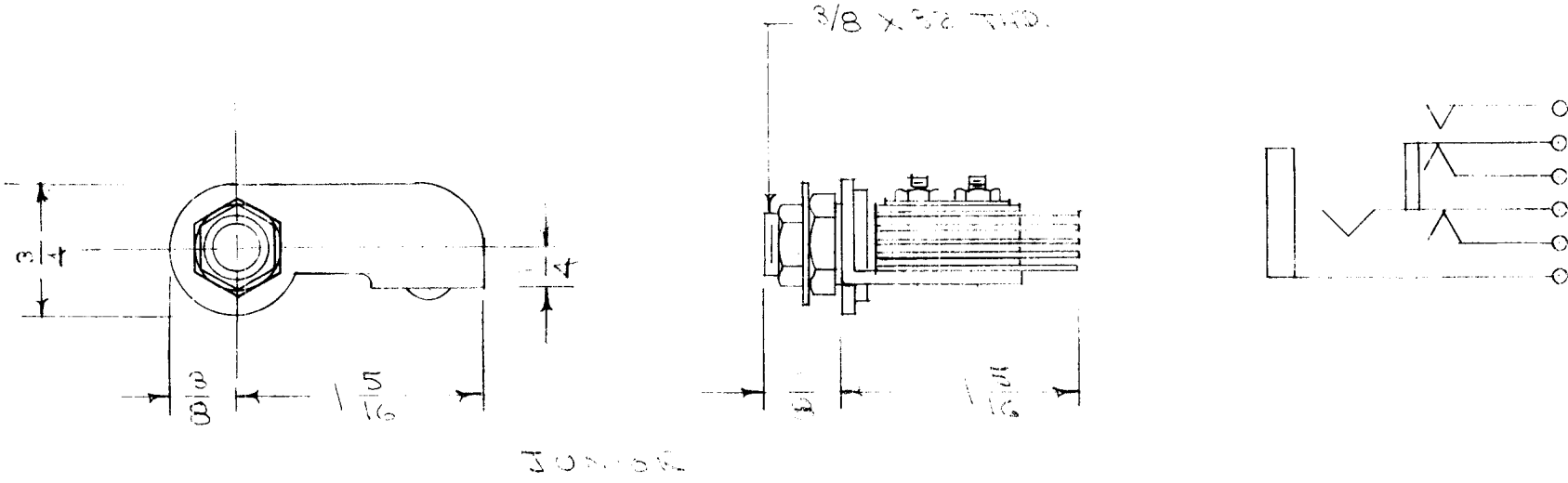
TOLERANCES			SCALE
ALL OTHERS:	DEC. DIM. ±	DRILL, PUNCH, COMMERCIAL STOCK SIZES AND MANUFACTURERS TOLERANCES ARE NOT INCLUDED.	
	FRAC. DIM. ±		
	ANGULAR DIM. ±		

IF IT IS FOUND DESIRABLE TO CHANGE ANY TOLERANCE OR OTHER DETAIL SPECIFIED ON THIS DRAWING NOTIFY THE PURCHASER PROMPTLY.

JJ-132

MAXIMUM ALLOWABLE TOLERANCES HAVE BEEN DETERMINED AND DEVIATIONS WILL BE CAUSE FOR REJECTION. REMOVE ALL BURRS AND SHARP EDGES

REQ. PER UNIT	USED ON		
	MODEL	PROJECT NO.	DATE
1	GPR		7-18-55



REF: P. R. MALLORY CAT. No. 705

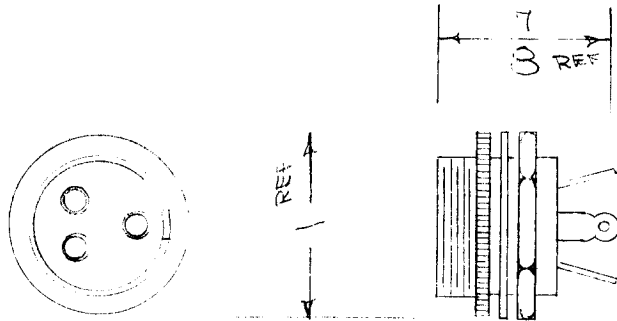
REQ.	ITEM	PART NO.	DESCRIPTION	SYMBOL
			THE TECHNICAL MATERIEL CORP. MAMARONECK. NEW YORK	
		STOCK SIZE	JACK, TELEPHONE	
		MATERIAL	WEIGHT PER PC.	
		TYPE & TEMPER	CDD. 7-18-55	WIC
		HEAT TREAT. SPEC.	DRAWN	ELEC. DES. APP. MECH. DES. APP.
		FINISH & SPEC. NO.	CHECKED	FINAL APPROVAL
				JJ-132

ISSUE	ITEM	CHANGED FROM	DATE	CN. NO.	DRAFTS	CHECKER	ENG. APP.
TOLERANCES				SCALE			
ALL OTHERS				DRILL, PUNCH, COMMERCIAL STOCK SIZES AND MANUFACTURERS TOLERANCES ARE NOT INCLUDED.			
DEC. DIM. ±		FRAC. DIM. ±		ANGULAR DIM. ±			

STANDARD DRAWING

REQ. PER UNIT	USED ON			JJ-133
	MODEL	ASS'Y. NO.	DATE	

TYPE DESIGNATION TO BE IN FOLLOWING FORM



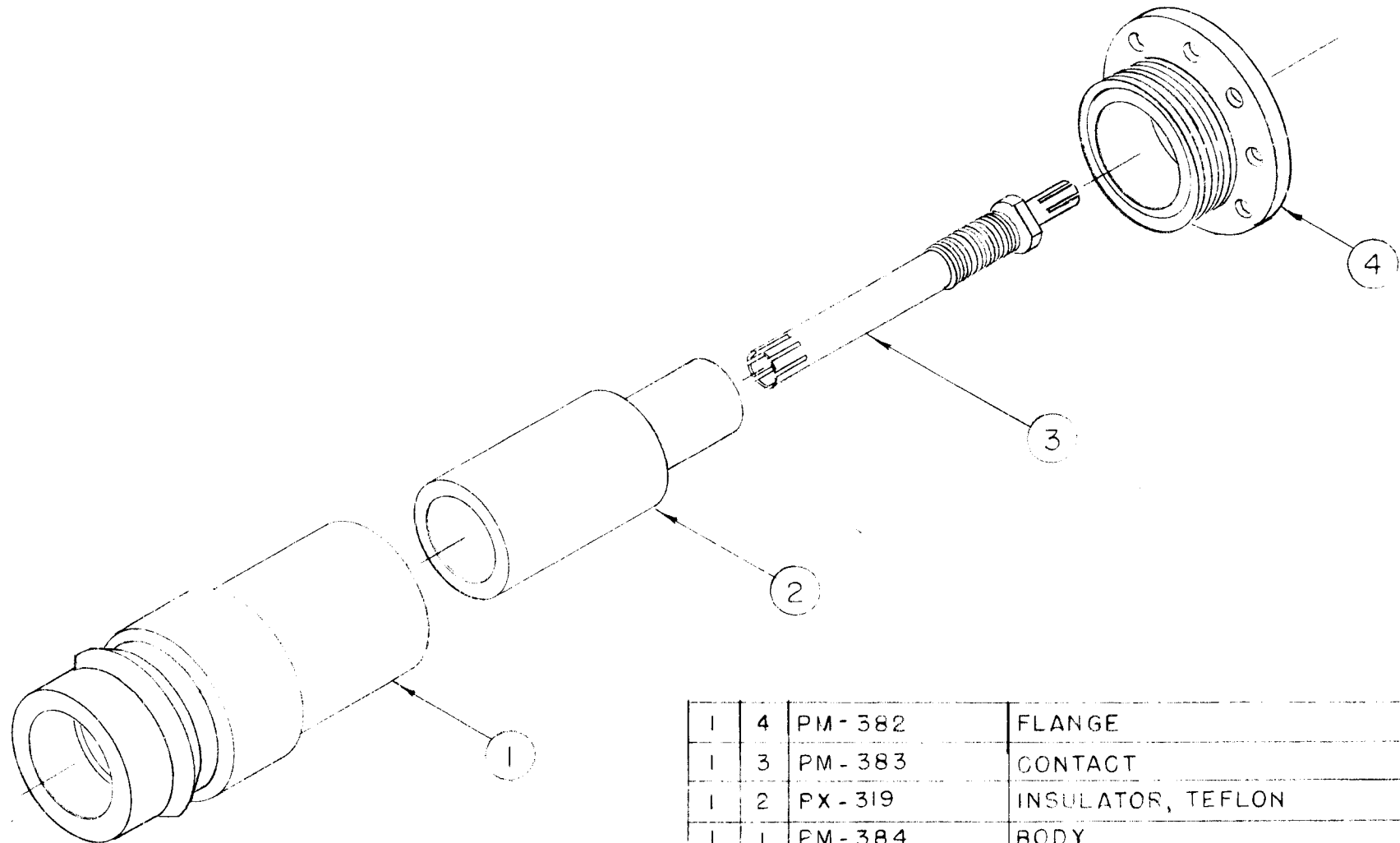
MTG. HOLE - $27/32$ "
 PANEL THICKNESS - $1/8$ "

REF. DWG. PL-132

REF: AMERICAN PHENOLIC CORPORATION
 3 CONTACT 91PC3F 4 CONTACT 91PC4F

REQ.	ITEM	PART NO.	DESCRIPTION				SYMBOL
			THE TECHNICAL MATERIEL CORP. MAMARONECK, NEW YORK				
			RECEPTACLE, FEMALE				
			CHASSIS TYPE				
ISSUE	ITEM	CHANGED FROM	DATE	CH. NO.	DRAFTS	CHECKER	ENG. APP.
TOLERANCES			SCALE:				
DEC. DIM. \pm			MAXIMUM ALLOWABLE TOLERANCES HAVE BEEN DETERMINED AND ANY DEVIATIONS WILL BE CAUSE FOR REJECTION. REMOVE ALL BURRS AND SHARP EDGES				
FRAC. DIM. \pm							
ANGULAR DIM. \pm							
TYPE & TEMPER		HEAT TREAT. SPEC.		DRAWN		CHECKED	
CHROME PLATE				ODD. $1/30$ IN [Signature]		[Signature]	
FINISH & SPEC. NO.		ELEC. DES. APP.		MECH. DES. APP.		JJ-133	

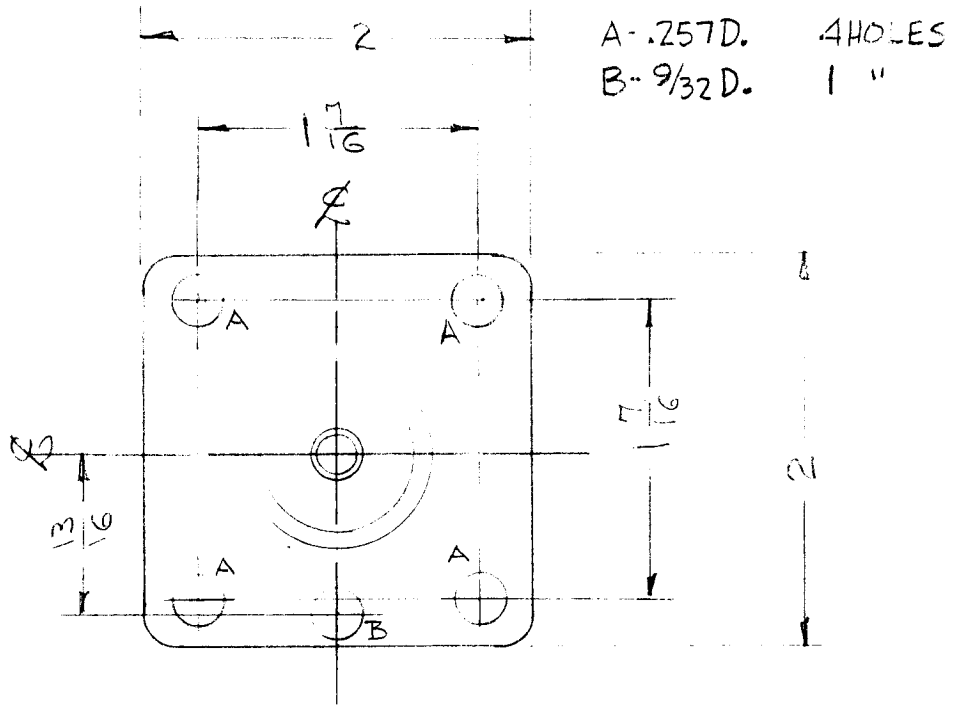
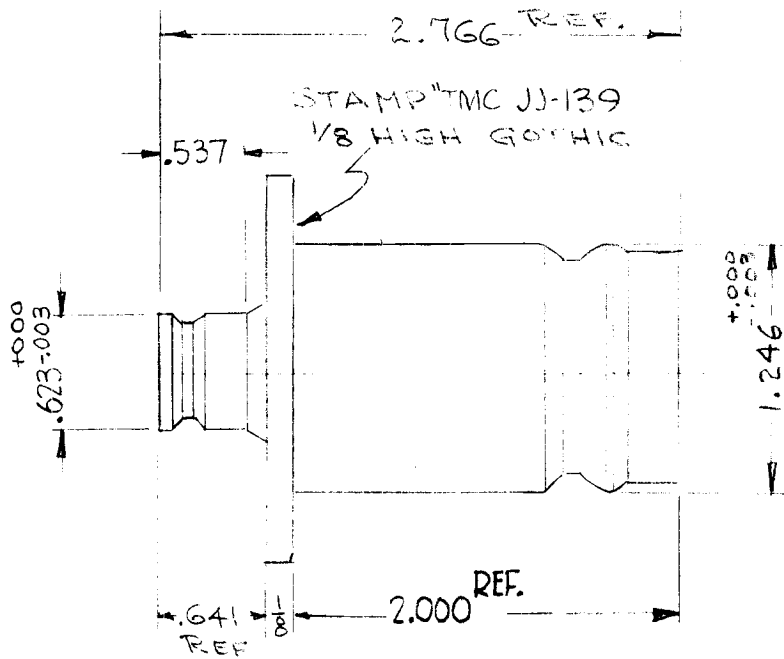
REQ. PER UNIT	USED ON			JJ-134	A
	MODEL	ASSY. NO.	DATE		
1	TCA85/QDL	A-1173			



1	4	PM-382	FLANGE
1	3	PM-383	CONTACT
1	2	PX-319	INSULATOR, TEFLON
1	1	PM-384	BODY

REQ.	ITEM	PART NO.	DESCRIPTION	SYMBOL
THE TECHNICAL MATERIEL CORP. MAMARONECK, NEW YORK				
CONNECTOR, RECEPTACLE				
STOCK SIZE				
MATERIAL				
TOLERANCES			SCALE: S-401-70-2204	
DEC. DIM. ±			MAXIMUM ALLOWABLE TOLERANCES HAVE BEEN DETERMINED AND ANY DEVIATIONS WILL BE CAUSE FOR REJECTION. REMOVE ALL BURRS AND SHARP EDGES	
FRAC. DIM. ±				
ANGULAR DIM. ±				
FINISH & SPEC. NO.			ELEC. DES. APP.	MECH. DES. APP.
ISSUE ITEM			DRAWN	
CHANGED FROM			CHECKED	
DATE			FINAL APPROVAL	
CH. NO.			JJ-134	
DRAFTS			A	
CHECKER				
ENG. APP.				
A 1 PM-386 DELETED			R 12-20-55	
10/10/57			WEC	

REQ. PER UNIT	USED ON			JJ-139 B
	MODEL	ASS'Y. NO.	DATE	



<u>SPECIFICATIONS</u> SERIES ~ QDL TO QDS NO OF CONTACTS ~ ONE(1) TYPE OF CONTACT ~ FEMALE DIELECTRIC ~ TEFLON	<u>ELECTRICAL DATA</u> MAX. PEAK VOLT. ~ 5KV NOM. IMPEDANCE ~ 50Ω	<u>MATERIAL</u> EXTERNAL PARTS - BRASS CONTACTS ~ BERYLLIUM COPPER	<u>FINISH</u> EXTERNAL PARTS ~ SILVER PLATE & RHODIUM FLASH CONTACTS ~ SILVER PLATE & GOLD FLASH.
--	---	--	---

REQ.	ITEM	PART NO.	DESCRIPTION	SYMBOL			
			THE TECHNICAL MATERIEL CORP. MAMARONECK, NEW YORK				
B	1		ADAPTER, CONNECTOR (QDL TO QDS)				
A	1						
ISSUE ITEM		CHANGED FROM	DATE	CH. NO.	DRAFTS	CHECKER	ENG. APP.
			5/9/61				
			9-6-60				
TOLERANCES		SCALE: S-401-70 (2172)					
DEC. DIM. ±		MAXIMUM ALLOWABLE TOLERANCES HAVE BEEN DETERMINED AND ANY DEVIATIONS WILL BE CAUSE FOR REJECTION. REMOVE ALL BURRS AND SHARP EDGES					
FRAC. DIM. ±							
ANGULAR DIM. ±							
		TYPE & TEMPER	HEAT TREAT. SPEC.	DRAWN	CHECKED	FINAL APPROVAL	
		SILVER PLATED				JJ-139 B	
		FINISH & SPEC. NO.		ELEC. DES. APP.	MECH. DES. APP.		

SPECIFICATIONS

SERIES ~ QDS TO QDS
 NO. OF CONTACTS ~ ONE (1) each end
 TYPE OF CONTACTS ~ FEMALE
 DIELECTRIC ~ TEFLON
ELECTRICAL DATA
 MAX. PEAK VOLTAGE ~ 5KV
 NOM. IMPEDANCE ~ 50Ω

MATERIAL

EXTERNAL PARTS ~ BRASS
 CONTACTS ~ BERYLLIUM
 COPPER

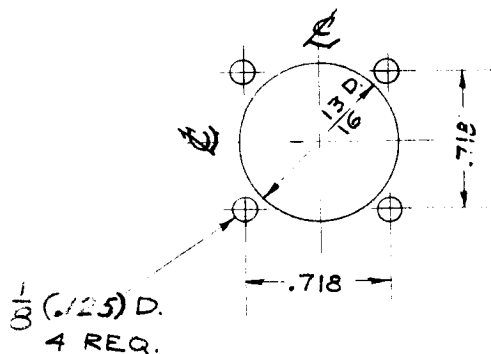
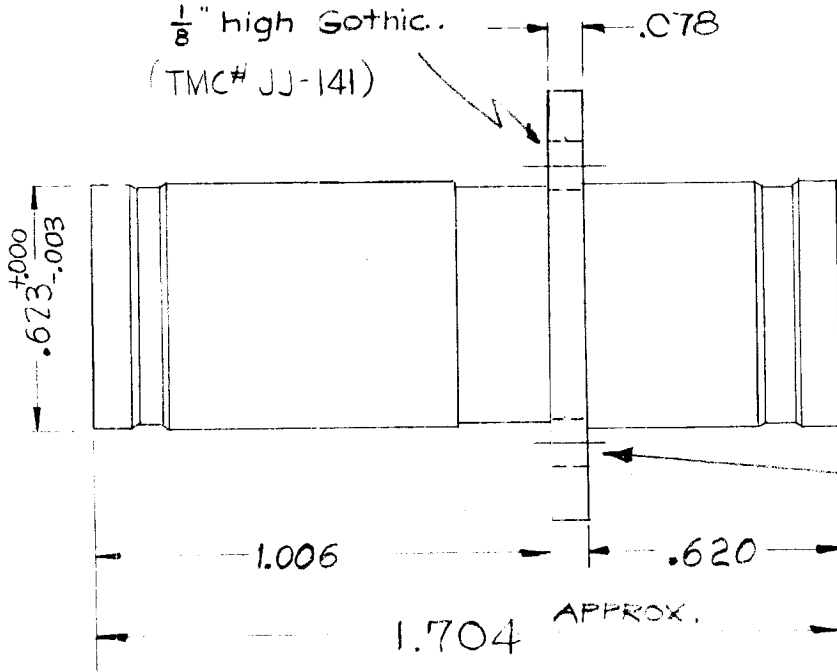
FINISH

EXTERNAL PARTS ~ SILVER
 PLATE & RHODIUM
 FLASH.
 CONTACTS ~ SILVER PLATE
 & GOLD FLASH.

REQ. PER UNIT	USED ON		JJ-141	G
	MODEL	ASS'Y. NO.		
			9-5-57	

Metal stamp to be

1/8" high Gothic.
 (TMC# JJ-141)



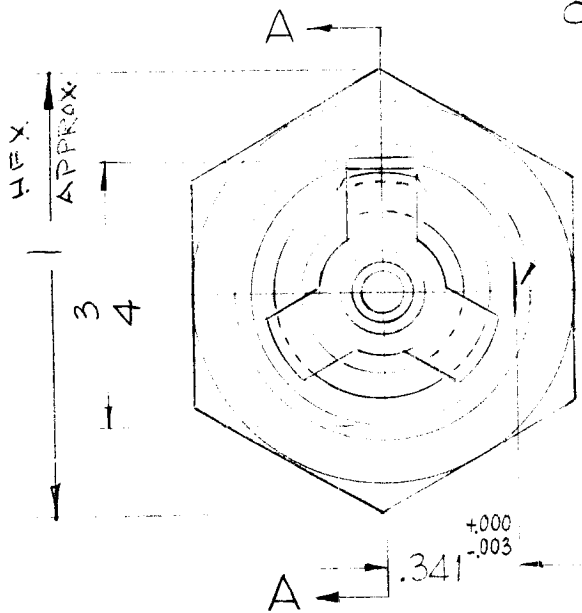
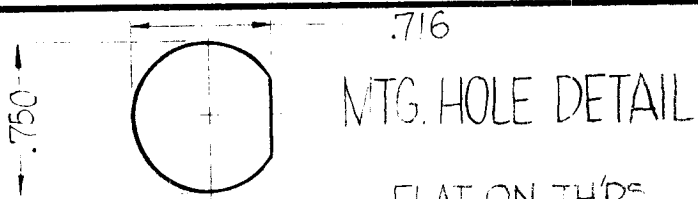
DRILLING PLAN

NOTE:
 MOUNTING PLATE 1" SQ. (4) 4-40
 TAPPED HOLES ON .718 Ø.

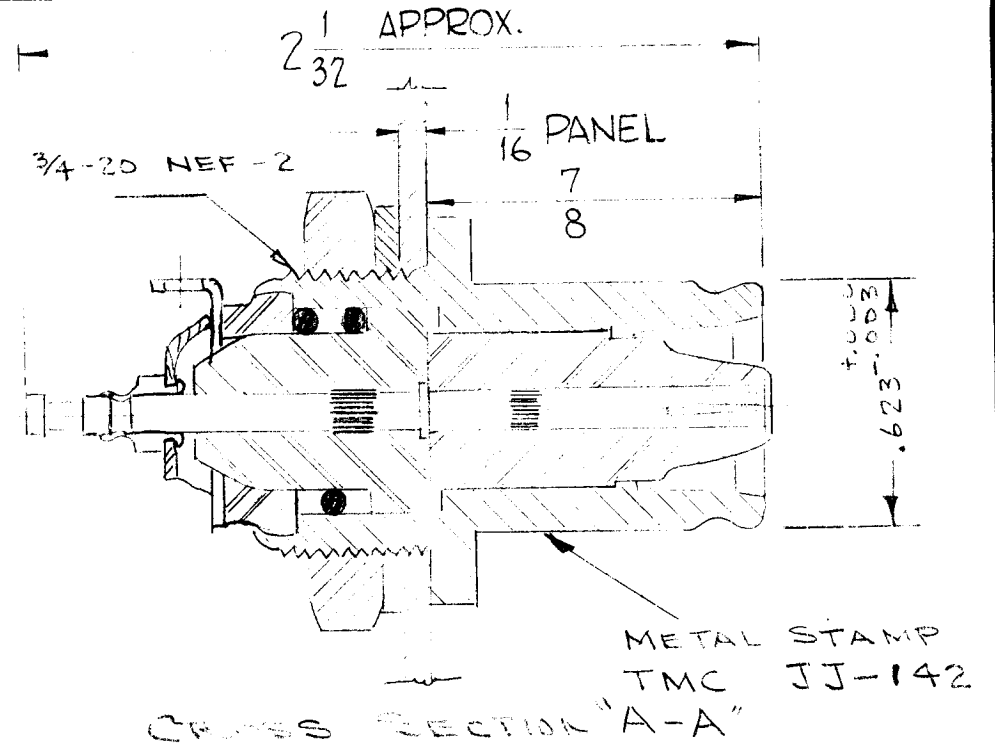
G		DRILLING PLAN ISOLATED 1.704 & .078 WERE 1.706 & .080	4-12-66	16085	W.W.	JCB	W.A.
F		1/8 (.125) WAS 1/16 (.125) 4-40 WAS 6-32	9/9/65	14764	H.V.	JCB	W.A.
E		1/16 (.0625) WAS 1/8 (.125) 6-32 WAS 4-40	8/27/65	14732	H.V.	JCB	W.A.
D	1	SPECIFICATIONS ADDED	5/8/61		J.M.	JCB	W.A.
C	1	MTG. NOTE ADDED	2-15-61	4186	G.A.F.	JCB	W.A.
B	2	1.006 WAS 1.086	8-18-60	2841	R.U.	JCB	W.A.
A	1	620 WAS 540					
		1.086 WAS 1.187, 1.706 WAS 2.004, .080, .540 DIM. APPROX.	11-10-58		J.C.B.	JCB	W.A.

ISSUE	ITEM	CHANGED FROM	DATE	CH. NO.	DRAFTS	CHECKER	ENG. APP.
TOLERANCES			SCALE: S401-70 (1034)				
DEC. DIM. ±			MAXIMUM ALLOWABLE TOLERANCES HAVE BEEN DETERMINED AND ANY DEVIATIONS WILL BE CAUSE FOR REJECTION.				
FRAC. DIM. ± 1/64			REMOVE ALL BURRS AND SHARP EDGES				
ANGULAR DIM. ±							

REQ.	ITEM	PART NO.	DESCRIPTION	SYMBOL
			THE TECHNICAL MATERIEL CORP. MAMARONECK, NEW YORK	
			ADAPTOR, CONNECTOR,	
			QDS TO QDS	
			9-5-57	
			TYPE & TEMPER	HEAT TREAT. SPEC.
			DRAWN	CHECKED
			FINISH & SPEC. NO.	ELEC. DES. APP. MECH. DES. APP.
			16	JJ-141
				G



REQ. PER UNIT	USED ON		JJ-142	D
	MODEL	ASS'Y. NO.		



PATENT NO. 2,767,267

SPECIFICATIONS
 SERIES QDS (SWITCH TYPE)
 NO. OF CONTACTS ~ ONE (1)
 TYPE OF CONTACTS ~ FEMALE
 DIELECTRIC ~ TEFLON

ELECTRICAL DATA
 MAX. PEAK VOLT. ~ 5KV
 NOM. IMPEDANCE ~ 50
MATERIAL
 EXTERNAL PARTS ~ BRASS
 CONTACTS ~ BERYLLIUM COPPER

FINISH
 EXTERNAL PARTS ~ SILVER PLATE
 CONTACTS ~ SILVER PLATE

NOTE - MOVEMENT OF INSULATOR ASS'Y FORWARD AT ENGAGEMENT 1/16 ±.0005

HARDWARE ---
 ① HEXAGON NUT, ① INTERNAL TOOTH LOCKWASHER. BOTH NUT AND LOCKWASHER ARE SILVER PLATED.

D	ADD PATENT NO.	12-1-66	17363	RME	RCB	R	
ISSUE	ITEM	CHANGED FROM	DATE	CH. NO.	DRAFTS	CHECKER	ENG. APP.
TOLERANCES		SCALE: DO NOT SCALE 5401-70 (862)					
DEC. DIM. ±		MAXIMUM ALLOWABLE TOLERANCES HAVE BEEN DETERMINED AND ANY DEVIATIONS WILL BE CAUSE FOR REJECTION. REMOVE ALL BURRS AND SHARP EDGES					
FRAC. DIM. ±							
ANGULAR DIM. ±							

STOCK SIZE			THE TECHNICAL MATERIEL CORP. MAMARONECK, NEW YORK		
MATERIAL			CONNECTOR, TRIP-TRIP		
TYPE & TEMPER	HEAT TREAT. SPEC.	DRAWN	CHECKED	FINAL APPROVAL	
FINISH & SPEC. NO.		ELEC. DES. APP.	MECH. DES. APP.	JJ-142 D	

IF IT IS FOUND DESIRABLE TO CHANGE ANY TOLERANCE OR OTHER DETAIL SPECIFIED ON THIS DRAWING NOTIFY THE PURCHASER PROMPTLY.

STANDARD DRAWING

JJ-144

MAXIMUM ALLOWABLE TOLERANCES HAVE BEEN DETERMINED AND DEVIATIONS WILL BE CAUSE FOR REJECTION. REMOVE ALL BURRS AND SHARP EDGES

REQ. PER UNIT

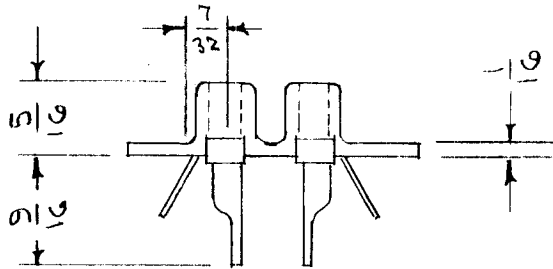
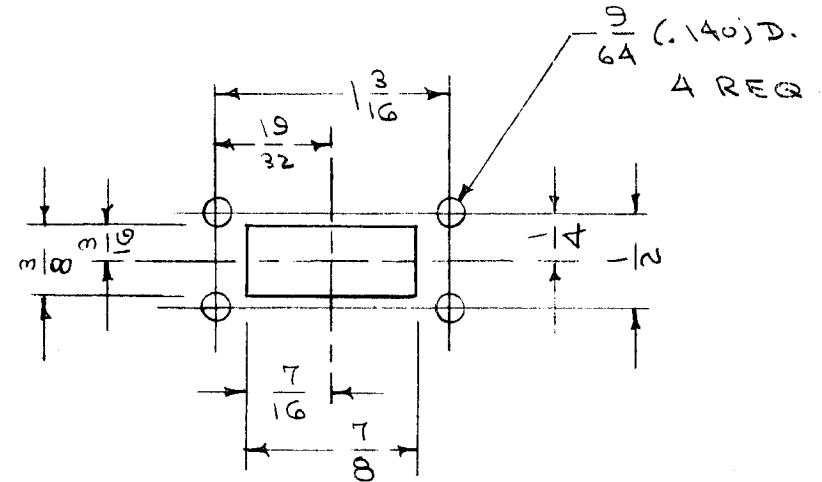
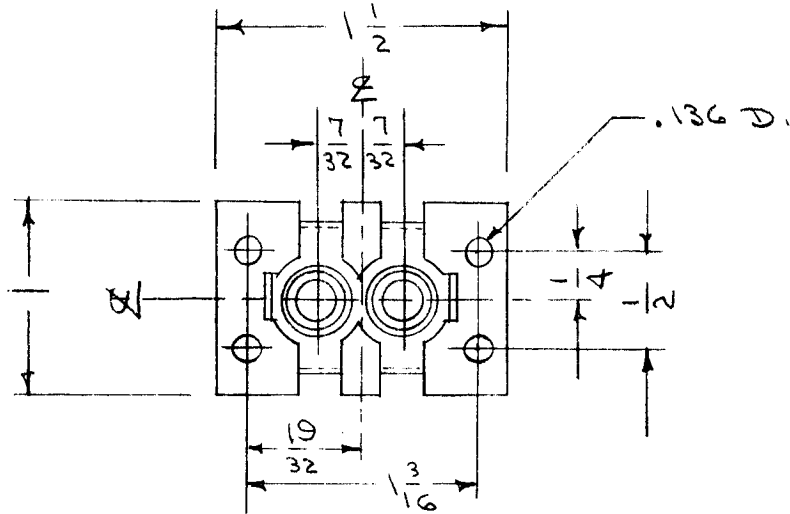
USED ON

MODEL

PROJECT NO.

ASS'Y. NO.

DATE



DIM. FOR REF. ONLY

NOTE: DRILLING PLAN

DWG. NO WAS PL-125

REF: CINCH MFG CO CAT # 8113

REQ.	ITEM	PART NO.	DESCRIPTION	SYMBOL
			THE TECHNICAL MATERIEL CORP.	
STOCK SIZE			MAMARONECK, NEW YORK	
			CONNECTOR, RECEPTACLE	
MATERIAL		WEIGHT PER PC.		
TYPE & TEMPER			CDD 4-11-55	
HEAT TREAT. SPEC.			DRAWN <i>JAC</i> ELEC. DES. APP. MECH. DES. APP. <i>W.C.</i>	
FINISH & SPEC. NO.			CHECKED <i>JAC</i> G.T.O. FINAL APPROVAL	
			JJ-144	

ISSUE	ITEM	CHANGED FROM	DATE	CN. NO.	DRAFTS	CHECKER	ENG. APP.
TOLERANCES			SCALE				
ALL OTHERS	DEC. DIM. ± FRAC. DIM. ± ANGULAR DIM. ±		DRILL, PUNCH, COMMERCIAL STOCK SIZES AND MANUFACTURERS TOLERANCES ARE NOT INCLUDED.				

IF IT IS FOUND DESIRABLE TO CHANGE ANY TOLERANCE OR OTHER DETAIL SPECIFIED ON THIS DRAWING NOTIFY THE PURCHASER PROMPTLY.

STANDARD DRAWING

JJ-145

MAXIMUM ALLOWABLE TOLERANCES HAVE BEEN DETERMINED AND DEVIATIONS WILL BE CAUSE FOR REJECTION. REMOVE ALL BURRS AND SHARP EDGES

REQ. PER UNIT

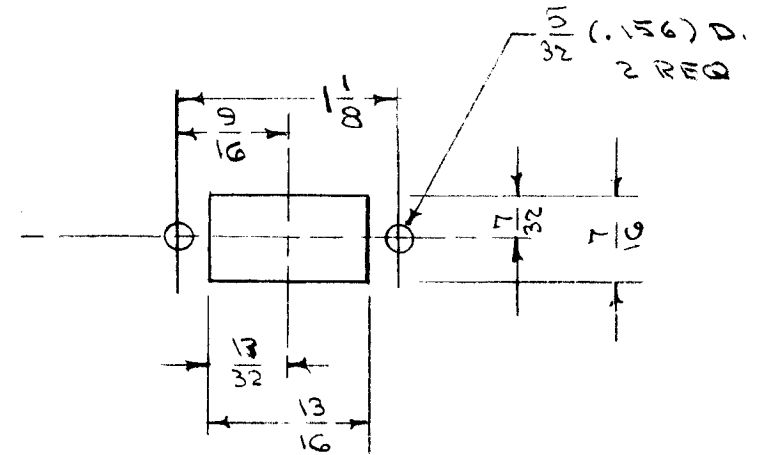
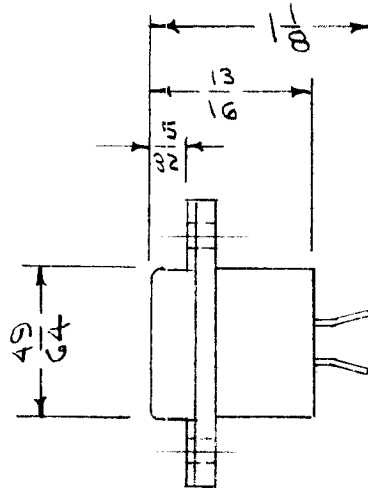
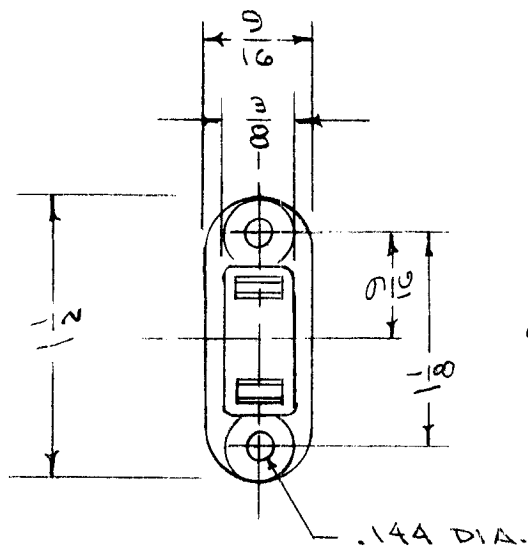
USED ON

MODEL

PROJECT NO.

ASS'Y. NO.

DATE



DRILLING PLAN

NOTE

DWG NO. WAS PL-121

DIM. FOR REF. ONLY

10 A. 250 V.

15 A. 125 V.

REF.: CINCH MFG. CO. CAT. NO. 12844

REQ.	ITEM	PART NO.	DESCRIPTION	SYMBOL
			THE TECHNICAL MATERIEL CORP.	
STOCK SIZE			MAMARONECK. NEW YORK	
			CONNECTOR, RECEPTACLE	
MATERIAL		WEIGHT PER PC.		
TYPE & TEMPER			CDD. 4-11-55	
DRAWN		ELEC. DES. APP.	MECH. DES. APP.	
HEAT TREAT. SPEC.		G.T.O		
FINISH & SPEC. NO.		JJ-145		

ISSUE	ITEM	CHANGED FROM	DATE	CN. NO.	DRAFTS	CHECKER	ENG. APP.
TOLERANCES			SCALE				
ALL OTHERS			DRILL, PUNCH, COMMERCIAL STOCK SIZES AND MANUFACTURERS TOLERANCES ARE NOT INCLUDED.				

IF IT IS FOUND DESIRABLE TO CHANGE ANY TOLERANCE OR OTHER DETAIL SPECIFIED ON THIS DRAWING NOTIFY THE PURCHASER PROMPTLY.

STANDARD DRAWING

JJ-146

MAXIMUM ALLOWABLE TOLERANCES HAVE BEEN DETERMINED AND DEVIATIONS WILL BE CAUSE FOR REJECTION. REMOVE ALL BURRS AND SHARP EDGES

REQ. PER UNIT

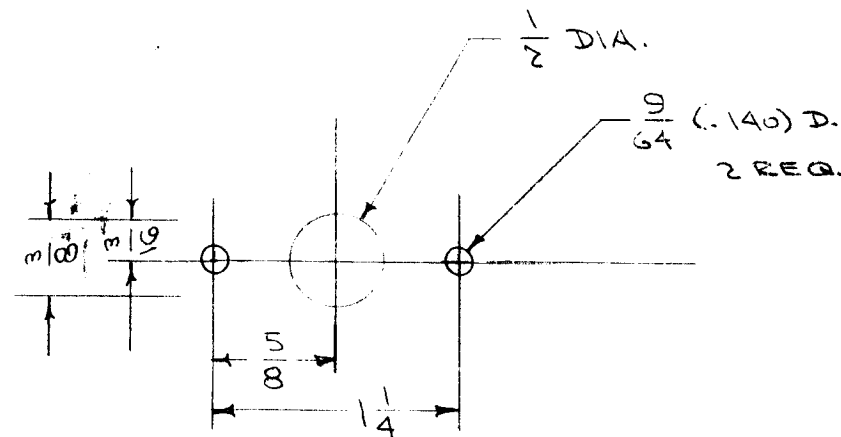
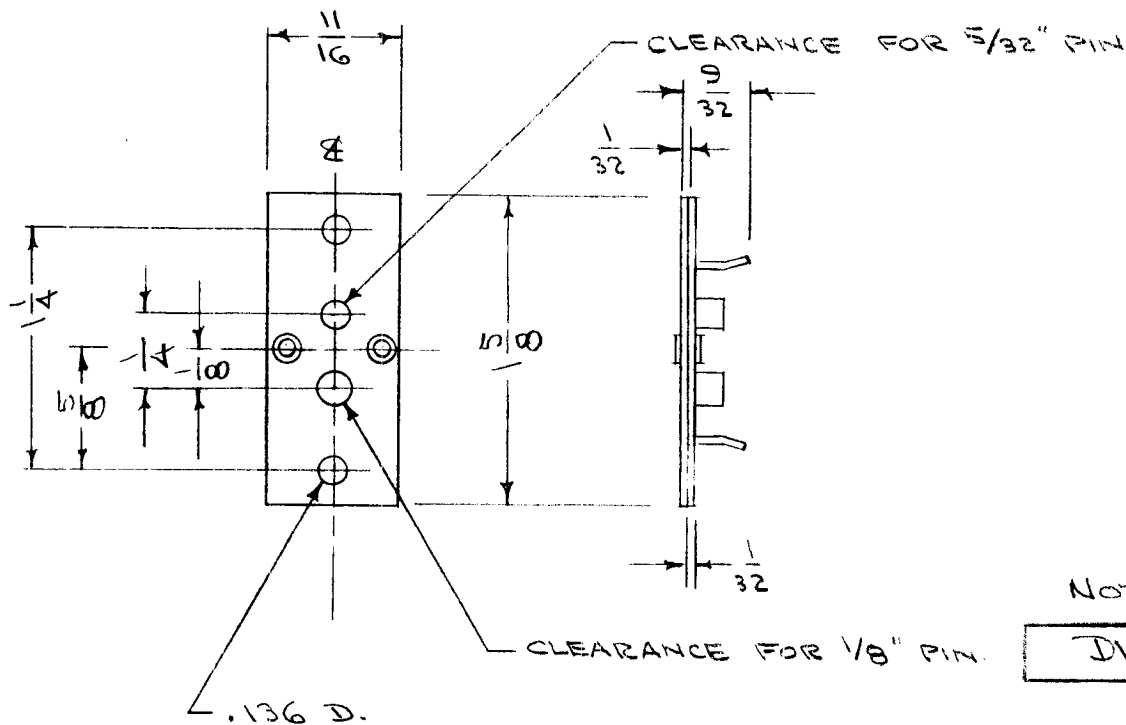
USED ON

MODEL

PROJECT NO.

ASS'Y. NO.

DATE



DRILLING PLAN

NOTE

DWG. NO WAS PL-122-A

DIM. FOR REF. ONLY.

NBS & ASA TYPE 1
RTMA " 101

REF: CINCH MFG. CO. CAT. NO. 1603A

REQ.	ITEM	PART NO.	DESCRIPTION	SYMBOL
			THE TECHNICAL MATERIEL CORP.	
STOCK SIZE			MAMARONECK. NEW YORK	
			CONNECTOR, RECEPTACLE	
MATERIAL		WEIGHT PER PC.		
TYPE & TEMPER			ORD. 4-11-55	W.C.
			DRAWN	ELEC. DES. APP. MECH. DES. APP.
HEAT TREAT. SPEC.			G.T.O.	
			CHECKED	FINAL APPROVAL
FINISH & SPEC. NO.			JJ-146	

ISSUE	ITEM	CHANGED FROM	DATE	CN. NO.	DRAFTS	CHECKER	ENG. APP.
TOLERANCES			SCALE				
ALL OTHERS	DEC. DIM. ± FRAC. DIM. ± ANGULAR DIM. ±		DRILL, PUNCH, COMMERCIAL STOCK SIZES AND MANUFACTURERS TOLERANCES ARE NOT INCLUDED.				

SPECIFICATIONS

SERIES ~ QDS to UHF
 NO. OF CONTACTS ~ ONE (1) EACH END
 TYPE OF CONTACT ~ FEMALE
 DIELECTRIC ~ TEFLON
ELECTRICAL DATA
 MAX. PEAK VOLT. ~ 5,000 VOLTS
 NOM. IMPEDANCE ~ 50 Ω

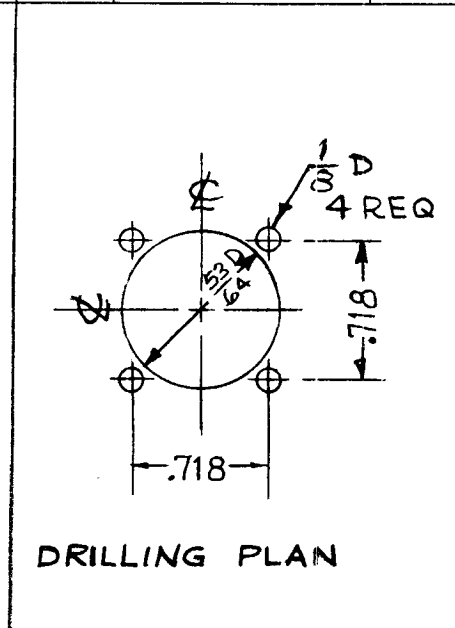
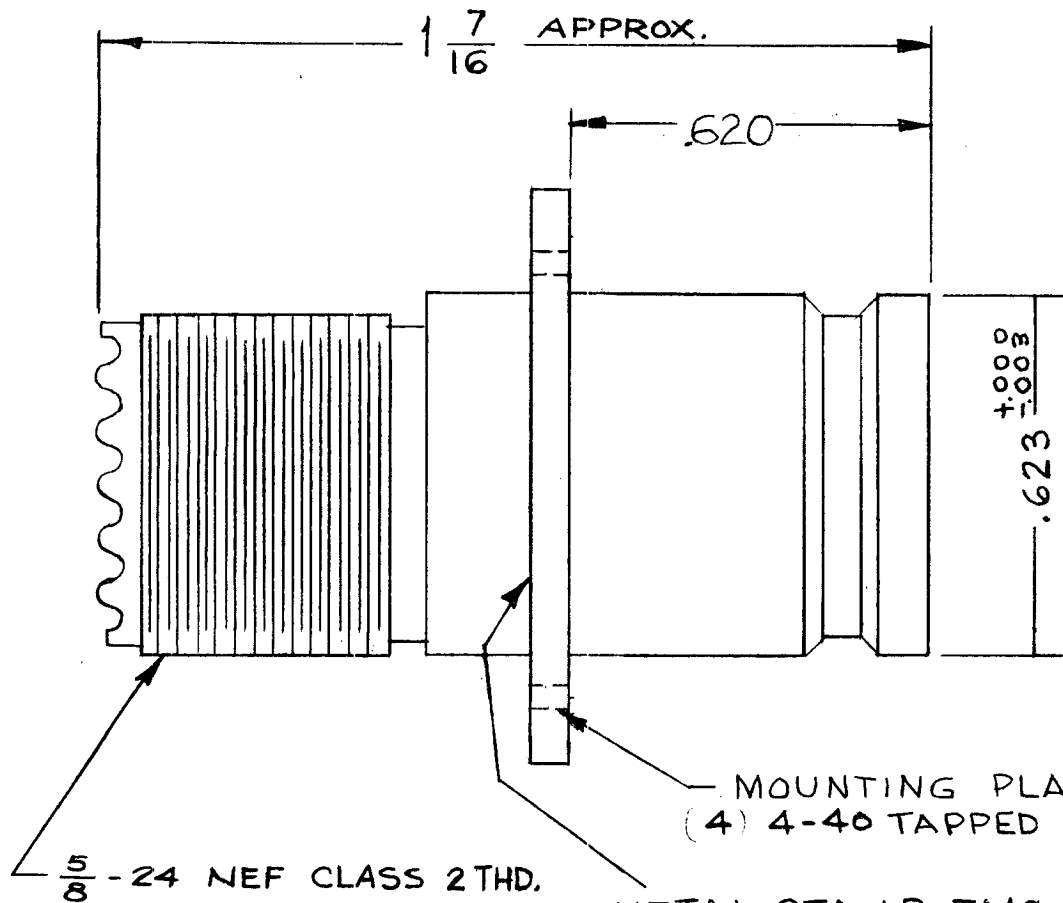
MATERIAL

EXTERNAL PARTS ~ BRASS
 CONTACTS ~ BERYLLIUM
 COPPER

FINISH

EXTERNAL PARTS ~ SILVER PLATE &
 RHODIUM FLASH
 CONTACTS ~ SILVER PLATE &
 GOLD FLASH

REQ. PER UNIT	USED ON		JJ-147 E
	MODEL	ASS'Y. NO.	



MOUNTING PLATE 1" SQ.
 (4) 4-40 TAPPED HOLES ON .718 C.
 METAL STAMP TMC PART TMC JJ-147
 1/8" HIGH GOTHIC.

E		DIM CLARIFIED DR. PLAN ISOLATED	4-12-66	16085	WJW	JCA	
D	1	SPECIFICATIONS ADDED	5/8/61		DRM	JCA	
C	3	TAPERED SHOULDER CLARIFIED	4-18-61	4704	WJW	JCA	DRM
	2	.712 DIM WAS 11/16 .165 DIM WAS 3/16					
B	2	3/16 DIM WAS 1/4	8-3-60	2695	CY	JCA	DRM
A	1	1/4 DRILLING 3/16 R. WAS 13/16 R.	6-25-58	400	WJW	JCA	DRM
ISSUE	ITEM	CHANGED FROM	DATE	CH. NO.	DRAFTS	CHECKER	ENG. APP.

REQ.	ITEM	PART NO.	DESCRIPTION	SYMBOL
			THE TECHNICAL MATERIEL CORP. MAMARONECK, NEW YORK	
		STOCK SIZE	ADAPTER, CONNECTOR	
		MATERIAL	QDS TO UHF	
			9-4-57	
		TYPE & TEMPER	DRAWN	CHECKED
		HEAT TREAT. SPEC.	16	DRM
		FINISH & SPEC. NO.	ELEC. DES. APP.	MECH. DES. APP.

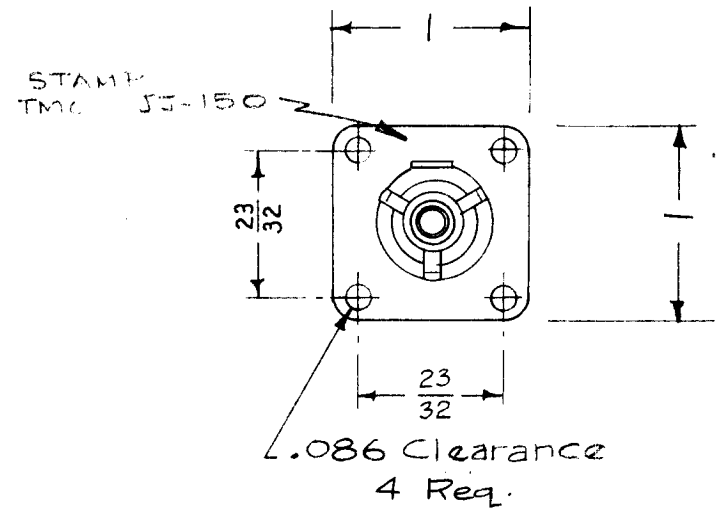
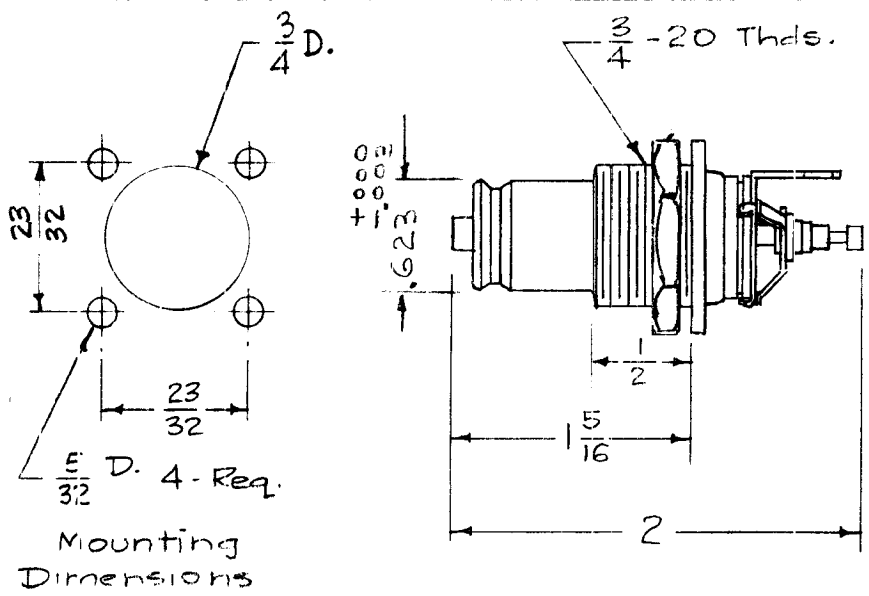
TOLERANCES
 DEC. DIM. ±
 FRAC. DIM. ± 1/64
 ANGULAR DIM. ±

SCALE: S401-70 (2082)

MAXIMUM ALLOWABLE TOLERANCES HAVE BEEN DETERMINED AND ANY DEVIATIONS WILL BE CAUSE FOR REJECTION.
 REMOVE ALL BURRS AND SHARP EDGES

JJ-147 E

SPECIFICATIONS SERIES~QDS(SWITCH TYPE) NO OF CONTACTS~ONE(1) TYPE OF CONTACT~FEMALE DIELECTRIC ~TEFLON	ELECTRICAL DATA MAX. PEAK VOLTAGE~5KV NOMINAL IMPEDANCE~50Ω MATING ACCOMODATIONS TYPE~	MATERIAL EXTERNAL PARTS~BRASS CONTACTS~BERYLLIUM COPPER FINISH EXTERNAL PARTS~SILVER PLATE & RHODIUM FLASH CONTACTS~SILVER PLATE & GOLD FLASH	USED ON		
			REQ. PER UNIT	MODEL	ASS'Y. NO.



NOTE~Hexagon Mounting Nut & Internal Lockwasher Supplied by Mfg.

Notes: All dimensions for reference only. (except Mounting Dim.) Dimension shown with switch closed (Normal)

REQ.	ITEM	PART NO.	DESCRIPTION				SYMBOL
			THE TECHNICAL MATERIEL CORP. MAMARONECK, NEW YORK				
			CONNECTOR, RECEPTACLE, SWITCH TYPE				
A	1	Specifications Added	5/8/61				
ISSUE	ITEM	CHANGED FROM	DATE	CH. NO.	DRAFTS	CHECKER	ENG. APP.
TOLERANCES			SCALE: S-401-70 (3103)				
DEC. DIM. ±			MAXIMUM ALLOWABLE TOLERANCES HAVE BEEN DETERMINED AND ANY DEVIATIONS WILL BE CAUSE FOR REJECTION. REMOVE ALL BURRS AND SHARP EDGES				
FRAC. DIM. ±							
ANGULAR DIM. ±							
TYPE & TEMPER		HEAT TREAT. SPEC.		DRAWN		CHECKED	
FINISH & SPEC. NO.		ELEC. DES. APP.		MECH. DES. APP.		JJ-150 A	

SPECIFICATIONS

SERIES ~ QDS
 NO. OF CONTACTS ~ ONE (1)
 TYPE OF CONTACT ~ FEMALE
 DIELECTRIC ~ TEFLON

ELECTRICAL DATA

MAX. PEAK VOLTAGE ~ 5000V
 NOM. IMPEDANCE ~ 50Ω
MATING ACCOMMODATIONS
 TYPE ~ TCA-85/QDS

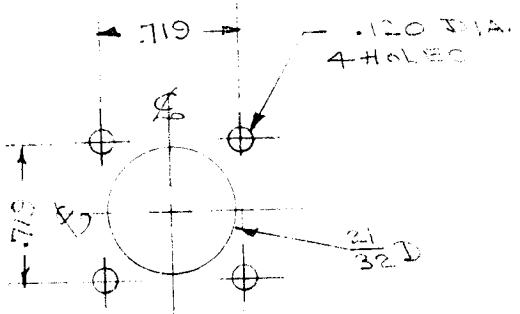
REQ. PER UNIT	USED ON			JJ-151	A
	MODEL	ASS'Y. NO.	DATE		
	TCA-85/QDS				

MATERIAL

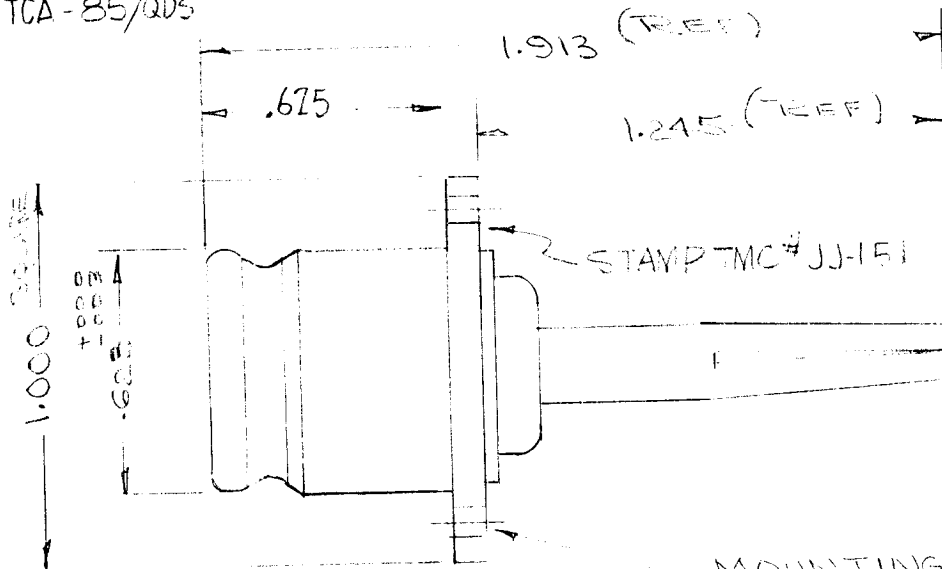
EXTERNAL PARTS ~ BRASS
 CONTACTS ~ BERYLLIUM COPPER

FINISH

EXT. PARTS ~ SILVER PLATE & RHODIUM FLASH.
 CONTACTS ~ SILVER PLATE & GOLD FLASH



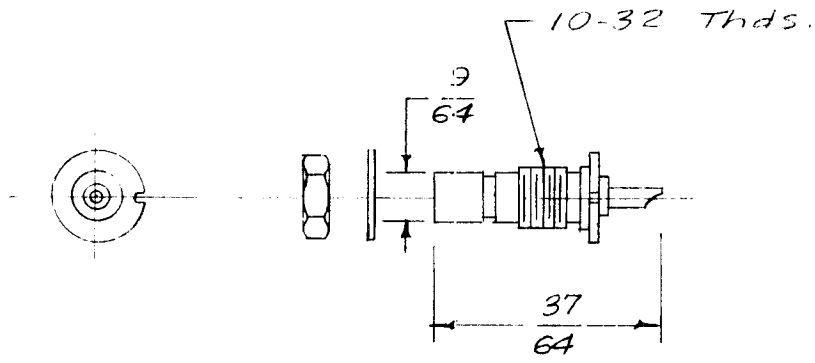
DRILLING DETAIL



- MOUNTING PLATE 1" SQUARE
 4 CLEARANCE HOLES .120 D.
 ON .719 CENTER.

ISSUE	ITEM	CHANGED FROM	DATE	CH. NO.	DRAFTS	CHECKER	ENG. APP.	REQ. ITEM	PART NO.	DESCRIPTION	SYMBOL	
A	1	SPECIFICATIONS ADDED	5/8/61							THE TECHNICAL MATERIEL CORP. MAMARONECK, NEW YORK		
								STOCK SIZE		CONNECTOR, RECEPTACLE		
								MATERIAL		QDS SERIES		
TOLERANCES			SCALE:	S-401-70 (3274)				DRAWN		CHECKED	FINAL APPROVAL	
DEC. DIM. ±			MAXIMUM ALLOWABLE TOLERANCES HAVE BEEN DETERMINED AND ANY DEVIATIONS WILL BE CAUSE FOR REJECTION.					TYPE & TEMPER		HEAT TREAT. SPEC.		JJ-151
FRAC. DIM. ±			REMOVE ALL BURRS AND SHARP EDGES					FINISH & SPEC. NO.		ELEC. DES. APP. MECH. DES. APP.		
ANGULAR DIM. ±												A

REQ. PER UNIT	USED ON			JJ-154
	MODEL	ASS'Y. NO.	DATE	



Hex Nut & Internal Lockwasher Supplied by Mfg.

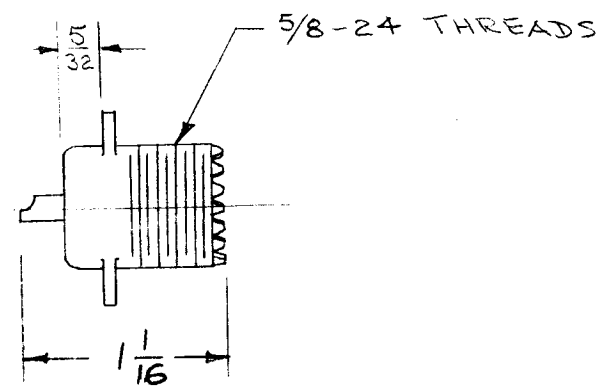
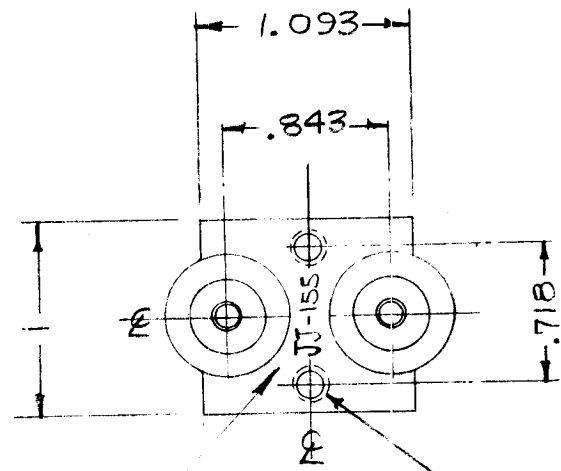
(Matches with PL-154, PL-155)

Ref. AMPHENOL # 27-3

REQ.	ITEM	PART NO.	DESCRIPTION				SYMBOL
			THE TECHNICAL MATERIEL CORP.				
			MAMARONECK, NEW YORK				
			CONNECTOR, RECEPTACLE, MALE				
			(50 Ω)				
			MATERIAL				
					16 7-31-57	<i>[Signature]</i>	<i>[Signature]</i>
			TYPE & TEMPER	HEAT TREAT. SPEC.	DRAWN	CHECKED	FINAL APPROVAL
					<i>[Signature]</i>	<i>[Signature]</i>	JJ-154
			FINISH & SPEC. NO.		ELEC. DES. APP.	MECH. DES. APP.	

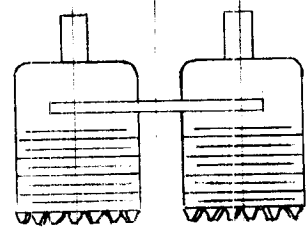
ISSUE	ITEM	CHANGED FROM	DATE	CH. NO.	DRAFTS	CHECKER	ENG. APP.
TOLERANCES			SCALE:				
DEC. DIM. ±			MAXIMUM ALLOWABLE TOLERANCES HAVE BEEN DETERMINED AND ANY DEVIATIONS WILL BE CAUSE FOR REJECTION. REMOVE ALL BURRS AND SHARP EDGES				
FRAC. DIM. ±							
ANGULAR DIM. ±							

REQ. PER UNIT	USED ON			JJ-155	C
	MODEL	ASS'Y. NO.	DATE		
1	SW-195	A-1433	10-21-57		



Drill & Tap for 6-32 - Class 2 thds. - 2 Req.

DIELECTRIC - TEFLON



METAL
STAMP TMC PART NO
JJ-155 AS SHOWN

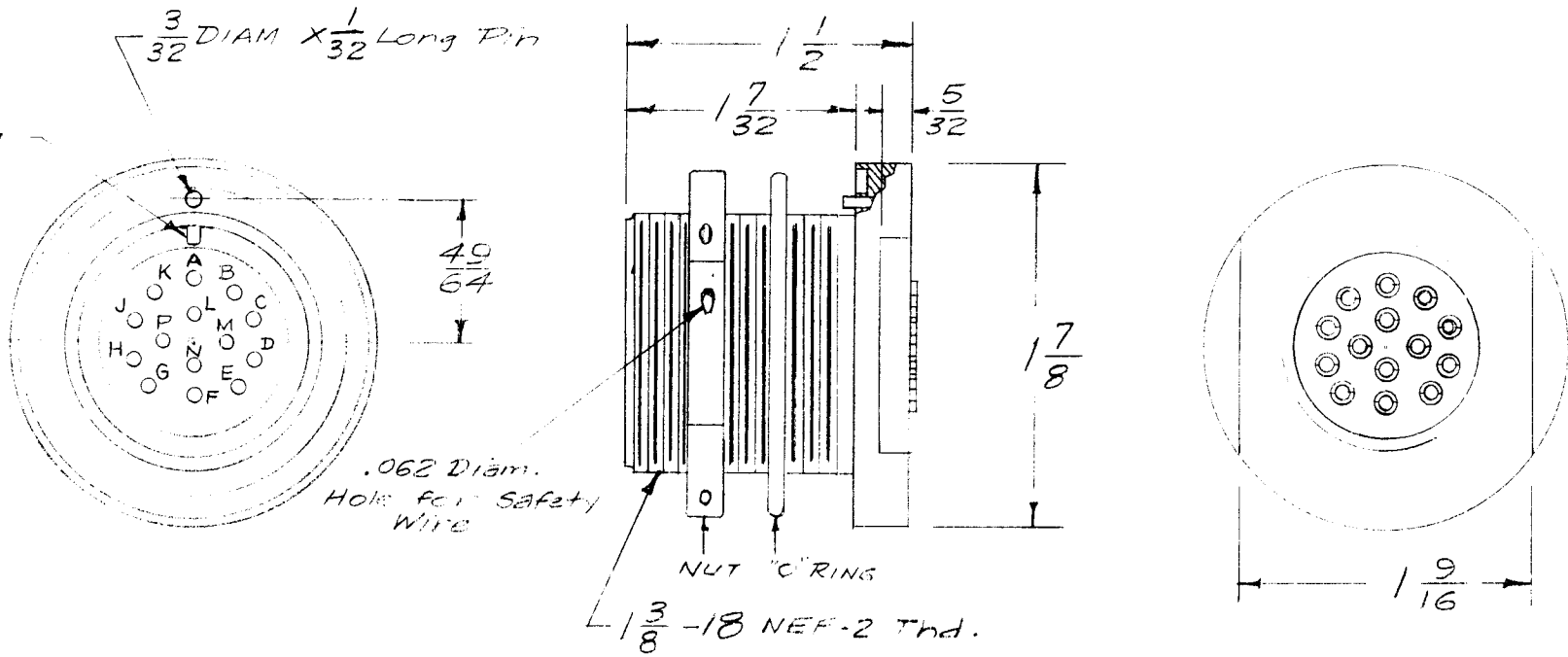
MATERIAL & FINISH SPECS.

- Body : Brass, Machined.
- Finish : Silver Plated & Rhodium Flash.
- Contacts : Beryllium.
- Finish : Silver Plated & Gold Flash.

NOTE:
CONNECTOR RECEPTACLES ARE EQUIVALENT TO SO-239, WITH THE EXCEPTION OF THE MOUNTING PLATE WHICH IS AS SHOWN.
FOR USE WITH CABLES RG-8, 9, 10, 11/U

ISSUE	ITEM	CHANGED FROM	DATE	CH. NO.	DRAFTS	CHECKER	ENG. APP.	REQ. ITEM	PART NO.	DESCRIPTION	SYMBOL			
C	1	Mat'l. & Finish Specs Added	6-20-61	5108	MAG	JCB	JFM			THE TECHNICAL MATERIEL CORP. MAMARONECK, NEW YORK CONNECTOR, RECEPTACLE, DUAL SO-239	C			
B	1	DIELECTRIC MAT'L WAS MICLA	3/27/61	4483	DOM	JCB	JFM		STOCK SIZE					
A	1	TMC PART NO ADDED	6/1/58	1	JCB	JFM			MATERIAL					
TOLERANCES								SCALE: S-401-70-1033		16 10/21/57	JFM	H.J.J.		
DEC. DIM. ± .015 FRAC. DIM. ± 1/64 ANGULAR DIM. ±								MAXIMUM ALLOWABLE TOLERANCES HAVE BEEN DETERMINED AND ANY DEVIATIONS WILL BE CAUSE FOR REJECTION. REMOVE ALL BURRS AND SHARP EDGES		TYPE & TEMPER	HEAT TREAT. SPEC.	DRAWN	CHECKED	FINAL APPROVAL
								FINISH & SPEC. NO.		ELEC. DES. APP.	MECH. DES. APP.	JJ-155	C	

REQ. PER UNIT	USED ON			JJ-157
	MODEL	ASS'Y. NO.	DATE	
1	ATS-70TU		2-5-58	



Polarizing - Boss

.062 Diam. Hole for Safety Wire

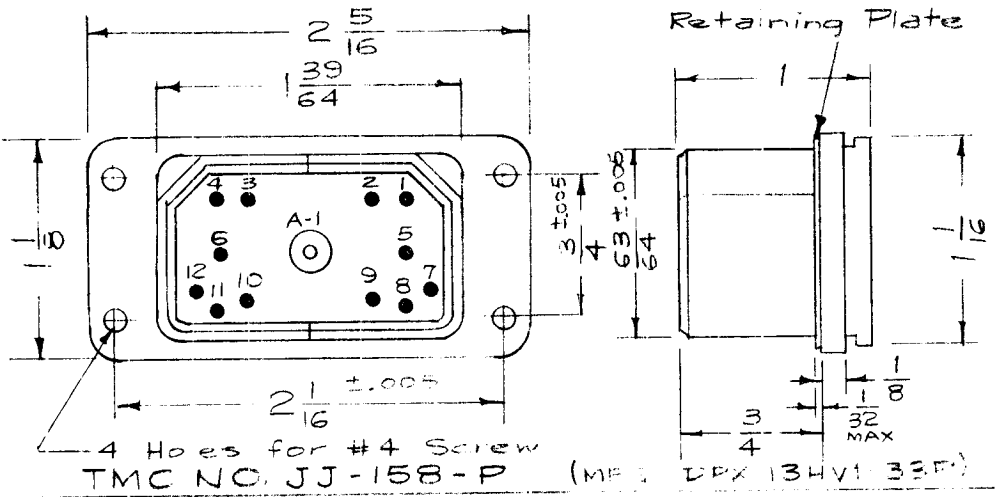
1/8 -18 NEF-2 Thd.

Note - Resilient Inserts
O Ring & Nut Supplied by Mfg.
(Nut is 3/16 THK. X 1-3/8 FLATS)

Note: This Connector Mates with Standard AN Inserts.

CANNON TYPE BFR-22-19P-1

REQ.	ITEM	PART NO.	DESCRIPTION				SYMBOL
			THE TECHNICAL MATERIEL CORP. MAMARONECK. NEW YORK				
			CONNECTOR, RECEPTACLE.				
			MALE				
			MATERIAL				
			STOCK SIZE				
			TYPE & TEMPER HEAT TREAT. SPEC.				
			FINISH & SPEC. NO.				
ISSUE	ITEM	CHANGED FROM	DATE	CH. NO.	DRAFTS	CHECKER	ENG. APP.
TOLERANCES			SCALE: FULL				
DEC. DIM. ±			MAXIMUM ALLOWABLE TOLERANCES HAVE BEEN DETERMINED AND ANY DEVIATIONS WILL BE CAUSE FOR REJECTION. REMOVE ALL BURRS AND SHARP EDGES				
FRAC. DIM. ±							
ANGULAR DIM. ±							
			16 ^{3/5/58}		Jude		JOR
			DRAWN		CHECKED		FINAL APPROVAL
			ELEC. DES. APP.		MECH. DES. APP.		JJ-157

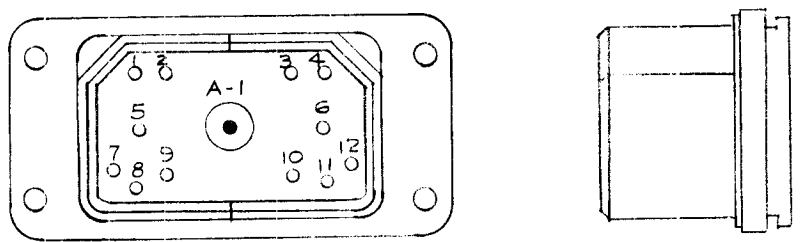


JJ-158-P

Shell Type Split
 Shell Material Aluminum Alloy Die Cast
 Shell Finish Cadmium Plate
 Contact Material Copper Alloy
 Contact Finish Gold Plate
 Insulation Melamine (XXXP)

Contact Code
 ● = Pin (Male)
 ○ = Socket (Female)

All Dimensions Same as Above



JJ-158-S

Contact Rating
 12 - 5amp (#1-12)
 1 - HV 5amp (#A-1)

Note:
 JJ-158-P mates with PL-160-S
 JJ-158-S mates with PL-160-P

TMC NO. JJ-158-S (MFG. DPX-13HV1-33S)

REF. CANNON ELECT. CO. TYPE DPX-13HV1-33

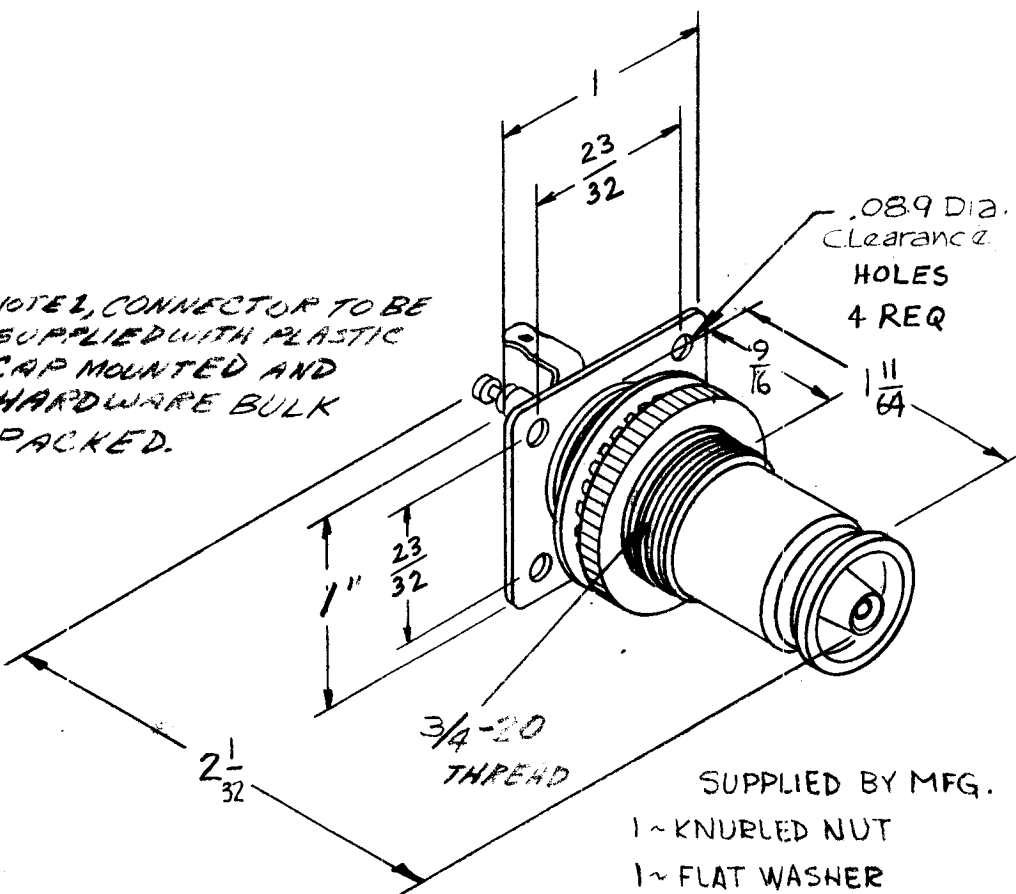
ISSUE	ITEM	CHANGED FROM	DATE	CH. NO.	DRAFTS	CHECKER	ENG. APP.
TOLERANCES		SCALE:					
DEC. DIM. ±		MAXIMUM ALLOWABLE TOLERANCES HAVE BEEN DETERMINED AND ANY DEVIATIONS WILL BE CAUSE FOR REJECTION.					
FRAC. DIM. ± 1/64		REMOVE ALL BURRS AND SHARP EDGES					
ANGULAR DIM. ±							

REQ. ITEM	PART NO.	DESCRIPTION	SYMBOL
		THE TECHNICAL MATERIEL CORP. MAMARONECK. NEW YORK	
STOCK SIZE		CONNECTOR, RECEPTACLE	
MATERIAL			
		165-1-58	
TYPE & TEMPER		HEAT TREAT. SPEC.	DRAWN
			CHECKED
FINISH & SPEC. NO.		ELEC. DES. APP.	MECH. DES. APP.
		JJ-158	

STANDARD DRAWING

REQ. PER UNIT	USED ON			JJ-162	D
	MODEL	ASS'Y. NO.	DATE		
			5/10/61		

NOTE 1, CONNECTOR TO BE SUPPLIED WITH PLASTIC CAP MOUNTED AND HARDWARE BULK PACKED.



SPECIFICATIONS

SERIES ~ QDS (SWITCH)
 NO. OF CONTACTS ~ ONE (1)
 TYPE OR CONTACT ~ FEMALE
 DIELECTRIC ~ TEFLON

ELECTRICAL DATA

MAX. PEAK VOLT. ~ 5000 V.
 FREQ. LIMIT. ~ 10,000 MCS
 NOM. IMPEDANCE ~ 50 Ω

MATERIAL

EXTERNAL PARTS ~ BRASS
 CONTACTS ~ BERYLLIUM COPPER

FINISH

EXTERNAL PARTS ~ SILVER PLATE & RHODIUM FLASH.
 CONTACTS ~ SILVER PLATE & GOLD FLASH.

MOVEMENT OF INSULATOR ASSEMBLY FORWARD AT ENGAGEMENT 1/16" MIN.

D	1	NOTE 1, 3/4-20 ADDED	12/29/65	15472	HVA	QPB	SC
C	1	MFR'S SUPPLIES ADDED	12-11-62	7840			
B	1	SPECIFICATIONS ADDED AND DIMS. REVISED	5/10/61		DOM		
A	1	COMPLETE REVISION	2-20-59	846	HJT		

ISSUE	ITEM	CHANGED FROM	DATE	CH. NO.	DRAFTS	CHECKER	ENG. APP.
TOLERANCES			SCALE: 3-401-70 (3225)				
DEC. DIM. ±			MAXIMUM ALLOWABLE TOLERANCES HAVE BEEN DETERMINED AND ANY DEVIATIONS WILL BE CAUSE FOR REJECTION: REMOVE ALL BURRS AND SHARP EDGES				
FRAC. DIM. ±							
ANGULAR DIM. ±							

REQ.	ITEM	PART NO.	DESCRIPTION		SYMBOL
			THE TECHNICAL MATERIEL CORP.		
			MAMARONECK, NEW YORK		
			CONNECTOR, RECEPTACLE		
			SWITCH TYPE		
			MATERIAL		
			MJT	2-20-59	HJT
			TYPE & TEMPER	HEAT TREAT. SPEC.	DRAWN
					CHECKED
					FINAL APPROVAL
			FINISH & SPEC. NO.	ELEC. DES. APP	MECH. DES. APP
					JJ-162 D

TO BE SUPPLIED BY MFR.
 1~KNURLED NUT, TMC # NT-125
 1~INTERNAL LOCKWASHER
 1~FLAT WASHER

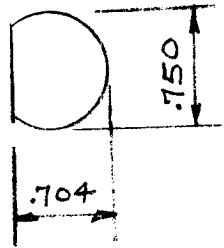
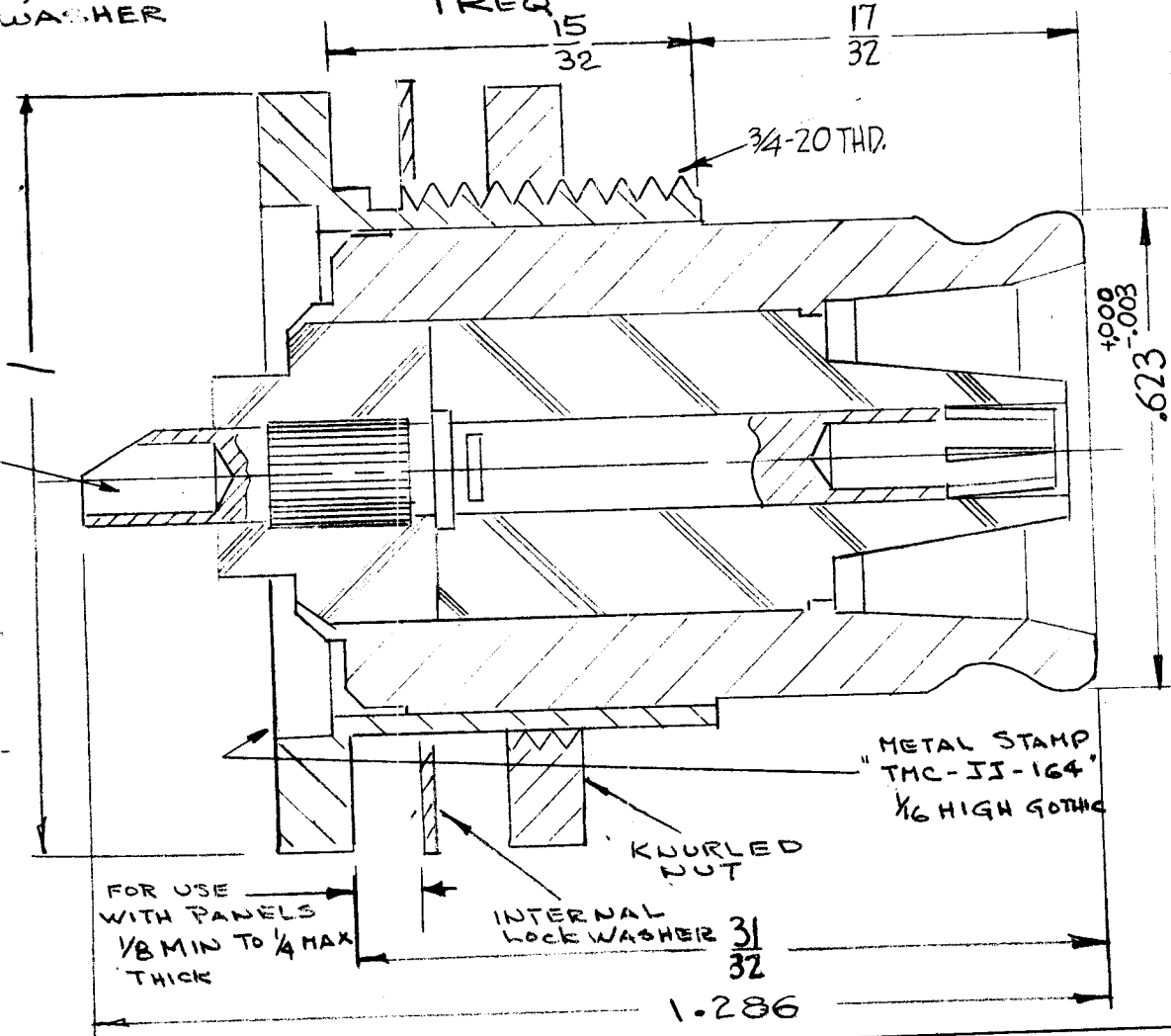
REQ. PER UNIT	USED ON		DATE
	MODEL	ASSY. NO.	

JJ-164 C

SPECIFICATIONS

SERIES ~ QDS
 NO. OF CONTACTS ~ ONE (1)
 TYPE OF CONTACT ~ FEMALE
 DIELECTRIC ~ TEFLON
 ELECTRICAL DATA
 MAX. PEAK VOLTAGE ~ 5000V
 NOM. IMPEDANCE ~ 50Ω
 MATING ACCOMODATIONS
 TYPE ~ SOLDER CUP
 MATERIAL
 EXTERNAL PARTS ~ BRASS
 CONTACTS ~ BERYLLIUM COPPER
 FINISH
 EXTERNAL PARTS ~ SILVER PLATE & RHODIUM FLASH.
 CONTACTS ~ SILVER PLATE & GOLD FLASH.

20 AWG. MAX. WIRE
 SIZE ACCOMODATED

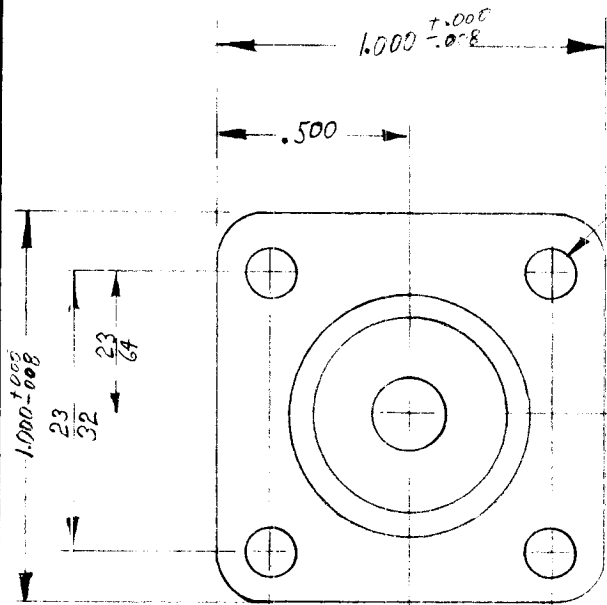


MOUNTING
 DETAIL

FOR USE
 WITH PANELS
 1/8 MIN TO 1/4 MAX
 THICK

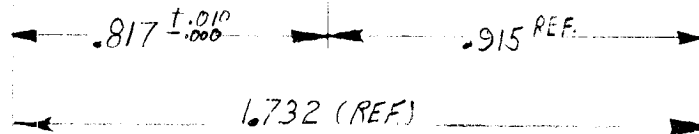
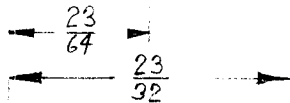
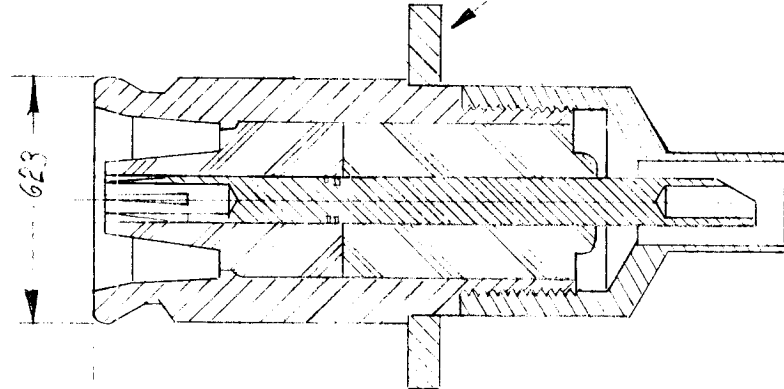
ISSUE	ITEM	CHANGED FROM	DATE	CH. NO.	DRAFTS	CHECKER	ENG. APP.	REQ. ITEM	PART NO.	DESCRIPTION	SYMBOL	
C	1	(1) FLAT WASHER ADDED	12-11-62	7841	<i>[Signature]</i>	<i>[Signature]</i>	<i>[Signature]</i>			THE TECHNICAL MATERIEL CORP. MAMARONECK. NEW YORK	CONNECTOR, RECEPTACLE QDS	
B	1	SPECIFICATIONS Added	5/8/61	—	<i>[Signature]</i>	<i>[Signature]</i>	<i>[Signature]</i>		STOCK SIZE			
A	2	DIMENSIONS ADDED	2/24/59	—	<i>[Signature]</i>	<i>[Signature]</i>	<i>[Signature]</i>		MATERIAL			
A	1	PLATING ADDED										
TOLERANCES			SCALE: 5-401-70 (3258)			TYPE & TEMPER			HEAT TREAT. SPEC.	DRAWN	CHECKED	FINAL APPROVAL
DEC. DIM. ± FRAC. DIM. ± ANGULAR DIM. ±			MAXIMUM ALLOWABLE TOLERANCES HAVE BEEN DETERMINED AND ANY DEVIATIONS WILL BE CAUSE FOR REJECTION. REMOVE ALL BURRS AND SHARP EDGES			FINISH & SPEC. NO.			ELEC. DES. APP.	MECH. DES. APP.	JJ-164 C	

REQ. PER UNIT	USED ON			JJ-167	A
	MODEL	ASSY. NO.	DATE		
			2-16-60		



1/8 DIA
4 HOLES

STAMP TMC PART NO. (JJ-167)
IN 1/6 HIGH GOTHIC.



SPECIFICATIONS

SERIES ~ QDS
NO OF CONTACTS ~ ONE (1)
TYPE OF CONTACT ~ FEMALE
DIELECTRIC ~ TEFLON

ELECTRICAL DATA

MAX. PEAK VOLT. ~ 5,000 V.
NOM. IMPEDANCE ~ 50Ω

CABLE ACCOMODATIONS

TYPE ~ HOOD RG-58/U, RG-59/U

MATERIAL

EXTERNAL PARTS - BRASS
CONTACTS - BERYLLIUM COPPER

FINISH

EXTERNAL PARTS ~ SILVER PLATE & RHODIUM
FLASH.
CONTACTS ~ SILVER PLATE & GOLD FLASH.

ISSUE	ITEM	CHANGED FROM	DATE	CH. NO.	DRAFTS	CHECKER	ENG. APP.	REQ.	ITEM	PART NO.	DESCRIPTION	SYMBOL	
											THE TECHNICAL MATERIEL CORP.		
											MAMARONECK, NEW YORK		
A	1	SPECIFICATION ADDED	5/6/61								CONNECTOR, RECEPTACLE		
											W/HOOD, QDS.		
TOLERANCES			SCALE: 2:1 S-401-70 (3245)										
DEC. DIM. ±			MAXIMUM ALLOWABLE TOLERANCES HAVE BEEN DETERMINED AND ANY DEVIATIONS WILL BE CAUSE FOR REJECTION. REMOVE ALL BURRS AND SHARP EDGES					TYPE & TEMPER	HEAT TREAT. SPEC.	DRAWN	CHECKED	FINAL APPROVAL	
FRAC. DIM. ±													
ANGULAR DIM. ±													
								FINISH & SPEC. NO.	ELEC. DES. APP	MECH. DES. APP	JJ-167	A	

SPECIFICATIONS	MATING ACCOMODATIONS	FINISH	USED ON			JJ-168	B	
			REQ. PER UNIT	MODEL	ASS'Y. NO.			DATE
								4-11-60

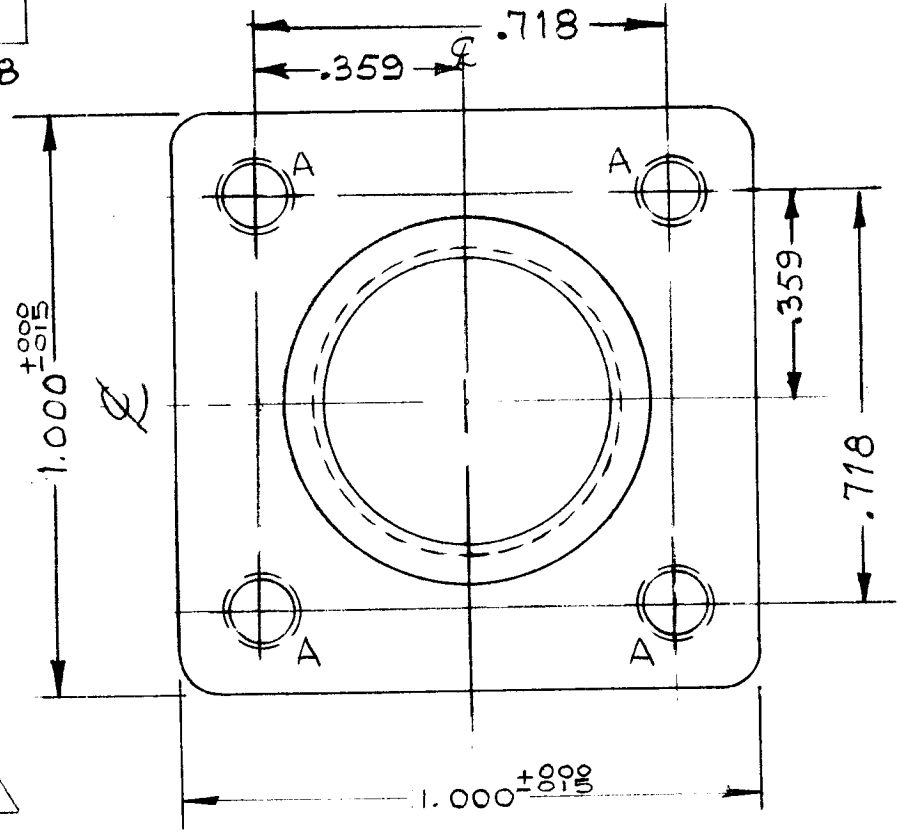
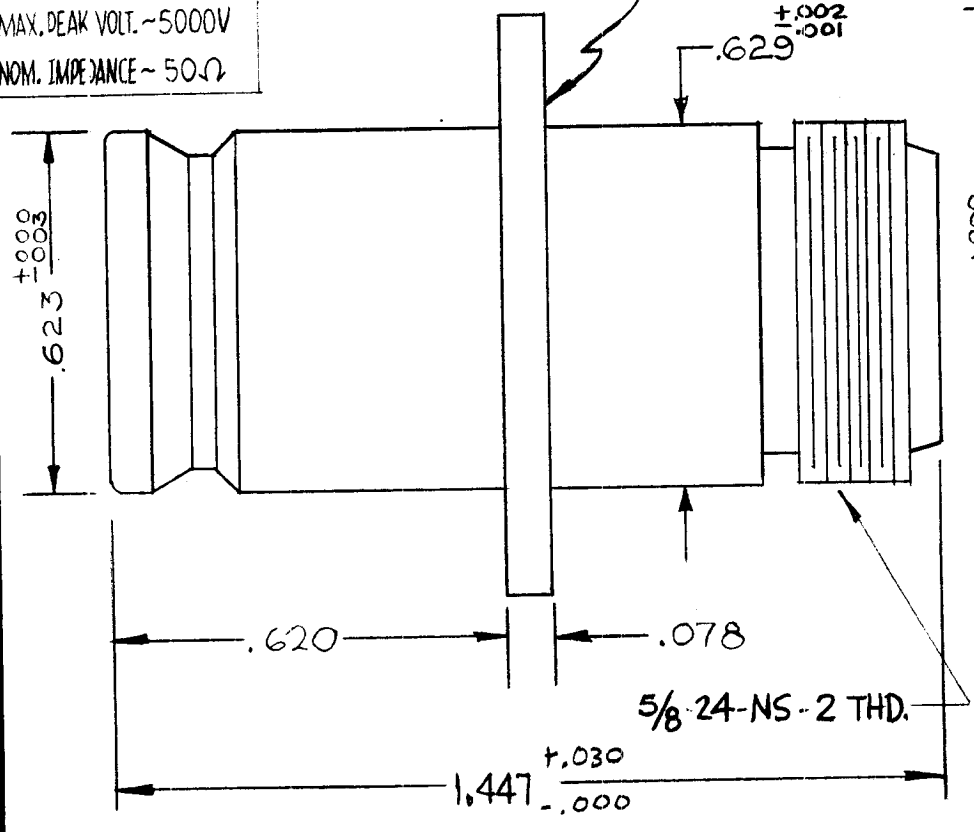
SERIES ~"N" TO "QDS"
 NO. OF CONTACTS ~ ONE (1)
 TYPE OF CONTACT ~ FEMALE
 DIELECTRIC ~ TEFLON
 ELECTRICAL DATA
 MAX. PEAK VOLT. ~ 5000V
 NOM. IMPEDANCE ~ 50Ω

TYPE ~ "N" FEMALE TO "QDS" FEMALE.
 MATERIAL
 EXTERNAL PARTS ~ BRASS
 CONTACTS ~ BERYLLIUM COPPER

EXT. PARTS ~ SILVER PLATE & RHODIUM FLASH
 CONTACTS ~ SILVER PLATE & GOLD FLASH

A ~ DR & TAP 4-40 (4 REQ.)

STAMP TMC JJ-168

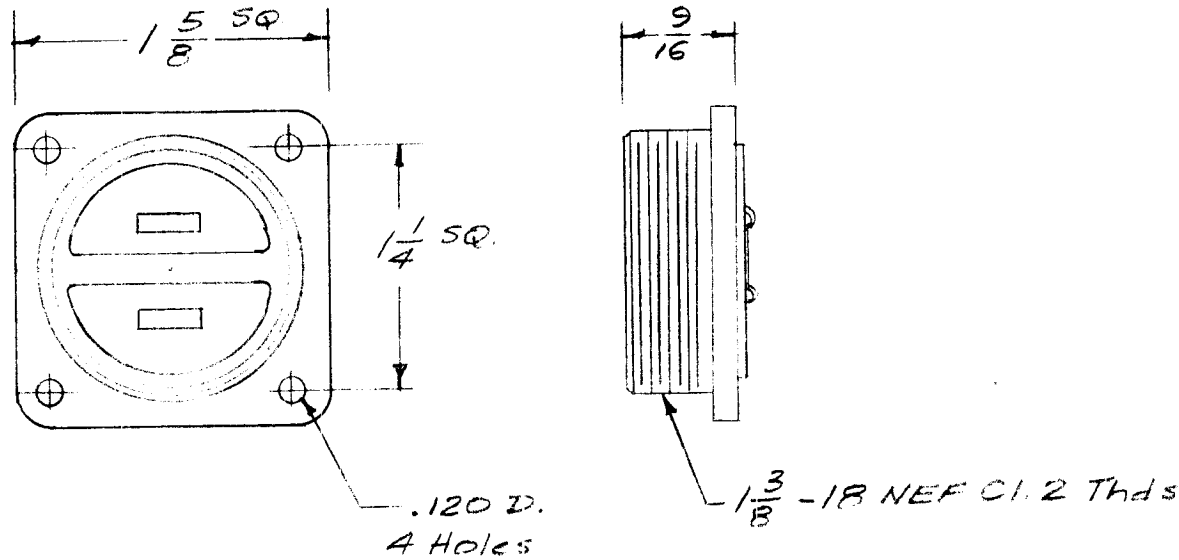


REQ.	ITEM	PART NO.	DESCRIPTION			SYMBOL	
			THE TECHNICAL MATERIEL CORP. MAMARONECK, NEW YORK				
			ADAPTOR, CONNECTOR.				
			"N" FEMALE TO QDS FEMALE				
B			STOCK SIZE				
A	1		MATERIAL				
ISSUE	ITEM	CHANGED FROM	DATE	CH. NO.	DRAFTS	CHECKER	ENG. APP.
			4-12-66	16085	WAW	RCB	MWH
			5/9/61				
TOLERANCES			SCALE: 5-401 TO (3254)				
DEC. DIM. ±			MAXIMUM ALLOWABLE TOLERANCES HAVE BEEN DETERMINED AND ANY DEVIATIONS WILL BE CAUSE FOR REJECTION.				
FRAC. DIM. ± 1/64			REMOVE ALL BURRS AND SHARP EDGES				
ANGULAR DIM. ±			TYPE & TEMPER	HEAT TREAT. SPEC.	DRAWN	CHECKED	FINAL APPROVAL
			FINISH & SPEC. NO.	ELEC. DES. APP.	MECH. DES. APP.	JJ-168	B

STANDARD DRAWING

REQ. PER UNIT 1	USED ON		
	MODEL RTP-2	ASS'Y. NO.	DATE 11-3-58

JJ-169

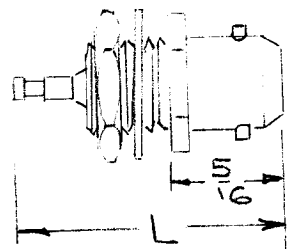


125 V. - 15 Amps.

Ref - AMPHENOL No. 97-4085

								REQ. ITEM	PART NO.	DESCRIPTION	SYMBOL		
										THE TECHNICAL MATERIEL CORP. MAMARONECK. NEW YORK CONNECTOR, RECEPTACLE, FEMALE, A.C.			
								STOCK SIZE					
								MATERIAL					
ISSUE	ITEM	CHANGED FROM	DATE	CH. NO.	DRAFTS	CHECKER	ENG. APP.			6" 11/3/58			
TOLERANCES			SCALE: FULL							DRAWN	CHECKED	FINAL APPROVAL	
DEC. DIM. ±			MAXIMUM ALLOWABLE TOLERANCES HAVE BEEN DETERMINED AND ANY DEVIATIONS WILL BE CAUSE FOR REJECTION. REMOVE ALL BURRS AND SHARP EDGES					TYPE & TEMPER		HEAT TREAT. SPEC.		JJ-169	
FRAC. DIM. ±								FINISH & SPEC. NO.		ELEC. DES. APP.			MECH. DES. APP.
ANGULAR DIM. ±													

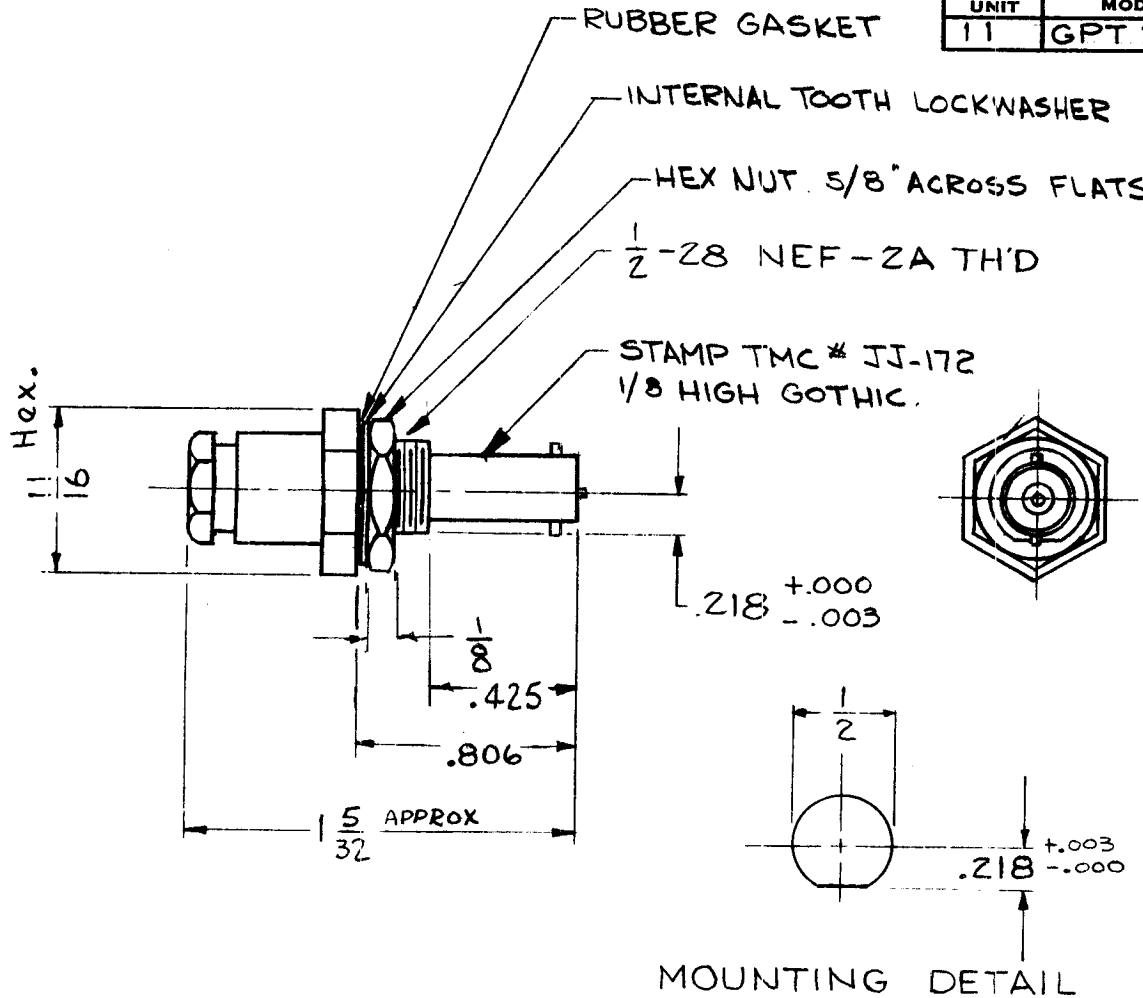
REQ. PER UNIT	USED ON			JJ-171
	MODEL	ASS'Y. NO.	DATE	



TMC PART NO	CAT. NO	INSULATOR	"L" DIM
JJ-171-1	46000	NYLON	11/16
JJ-171-2	46025	KEL-F	11/16

ISSUE	ITEM	CHANGED FROM	DATE	CH. NO.	DRAFTS	CHECKER	ENG. APP.	REQ.	ITEM	PART NO.	DESCRIPTION	SYMBOL
											THE TECHNICAL MATERIEL CORP. MAMARONECK, NEW YORK	
										STOCK SIZE	RECEPTACLE	
										MATERIAL	SINGLE HOLE MOUNT	
											APR 21 1959	
											CHECKED	FINAL APPROVAL
											EG	JJ-171
											ELEC. DES. APP	MECH. DES. APP
										FINISH & SPEC. NO.		

REQ. PER. UNIT 11	USED ON		JJ-172 E
	MODEL GPT 10K	ASS'Y. NO.	



SPECIFICATIONS

SERIES ~ BNC
 NO. OF CONTACTS ~ ONE (1)
 TYPE OF CONTACTS ~ FEMALE
 DIELECTRIC ~ TEFLON
ELECTRICAL DATA
 MAX. PEAK OPR. VOLT. ~ 500
 NOMINAL IMPEDANCE ~ 50 Ω
 FREQ. LIMITS ~ DC TO 106c.

CABLE ACCOMODATIONS

TYPE ~ RG-174/U #22 SHIELD

MATERIAL

EXTERNAL PARTS ~ BRASS
 CONTACT ~ BERYLLIUM COPPER

FINISH

EXTERNAL PARTS ~ SILVER PLATE & RHODIUM FLASH
 CONTACTS ~ GOLD PLATE

STANDARD DRAWING

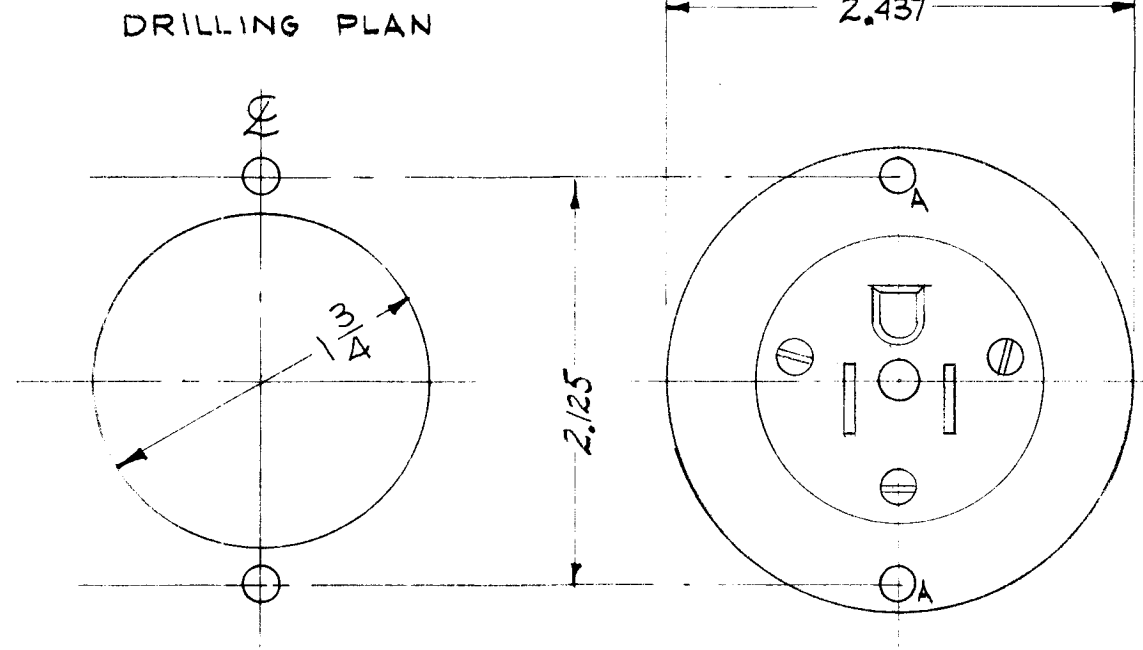
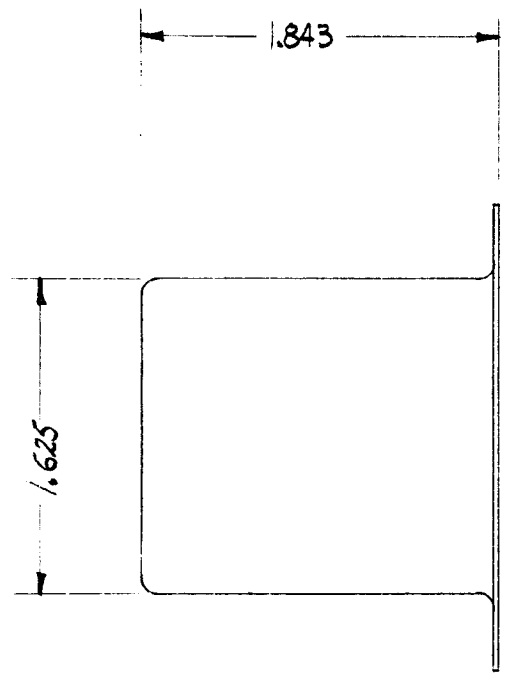
MOUNTING DETAIL

E	2	HARDWARE ADDED	7-21-64	11919	<i>[Signature]</i>	<i>[Signature]</i>	<i>[Signature]</i>
	1	ELEC. DATA ADDED					
D	1	CONTACT FINISH WAS SILVER PLATE RHODIUM FLASH	9-16-63	9941	<i>[Signature]</i>	<i>[Signature]</i>	<i>[Signature]</i>
C	1	DIMS CLARIFIED	9-20-62	1355	<i>[Signature]</i>	<i>[Signature]</i>	<i>[Signature]</i>
B	1	SPECS ADDED	5/15/61	#	<i>[Signature]</i>	<i>[Signature]</i>	<i>[Signature]</i>
A	1	Revised & Redrawn	6/8/59		J.C.B.	<i>[Signature]</i>	<i>[Signature]</i>
ISSUE	ITEM	CHANGED FROM	DATE	CH. NO.	DRAFTS	CHECKER	ENG. APP.

TOLERANCES		SCALE:
DEC. DIM. ±	FRAC. DIM. ±	ANGULAR DIM. ±
MAXIMUM ALLOWABLE TOLERANCES HAVE BEEN DETERMINED AND ANY DEVIATIONS WILL BE CAUSE FOR REJECTION. REMOVE ALL BURRS AND SHARP EDGES		

REQ. ITEM	PART NO.	DESCRIPTION	SYMBOL
		THE TECHNICAL MATERIEL CORP. MAMARONECK, NEW YORK	
STOCK SIZE		CONNECTOR, RECEPTACLE,	
MATERIAL		BNC SERIES	
TYPE & TEMPER	HEATTREAT. SPEC.	J.C. Biele	<i>[Signature]</i>
FINISH & SPEC. NO.		DRAWN	CHECKED
		<i>[Signature]</i>	<i>[Signature]</i>
		FINAL APPROVAL	
		JJ-172 E	

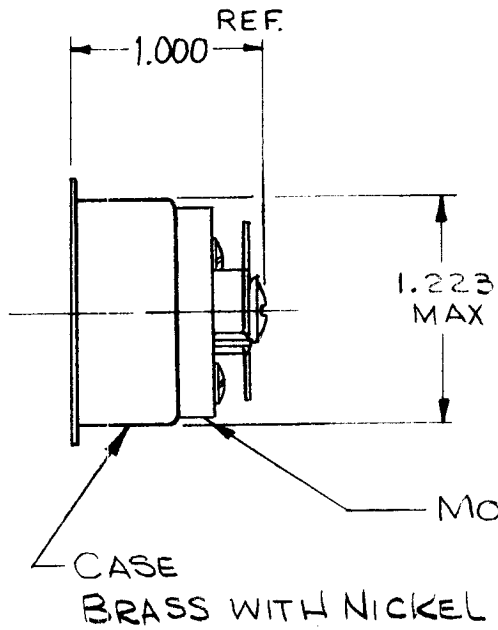
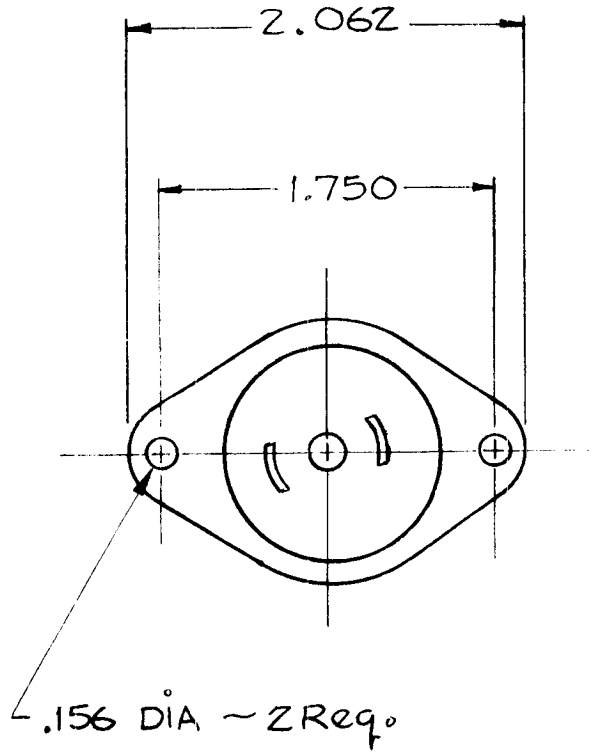
REQ. PER. UNIT	USED ON			JJ-173	A
	MODEL	ASS'Y. NO.	DATE		
4	GPT 101K	UTILITY OUTLET			



REV 2 HYPACK # 5279

REQ.	ITEM	PART NO.	DESCRIPTION		SYMBOL		
			THE TECHNICAL MATERIEL CORP.				
			MAMARONECK, NEW YORK				
			PLUG, RECEPTACLE				
			U-SHAPE GROUNDING TYPE				
A	ADDED DRILLING PLAN	8-3-59					
ISSUE	ITEM	CHANGED FROM	DATE	CH. NO.	DRAFTS	CHECKER	ENG. APP.
TOLERANCES		SCALE:					
DEC. DIM. ±		MAXIMUM ALLOWABLE TOLERANCES HAVE BEEN DETERMINED AND ANY DEVIATIONS WILL BE CAUSE FOR REJECTION.					
FRAC. DIM. ±		REMOVE ALL BURRS AND SHARP EDGES					
ANGULAR DIM. ±							
TYPE & TEMPER		HEATTREAT. SPEC.		DRAWN	CHECKED	FINAL APPROVAL	
FINISH & SPEC. NO.		ELEC. DES. APP		MECH. DES. APP		JJ-173 A	

REQ. PER. UNIT	USED ON			JJ-175	B
	MODEL	ASS'Y. NO.	DATE		
			5-13-59		



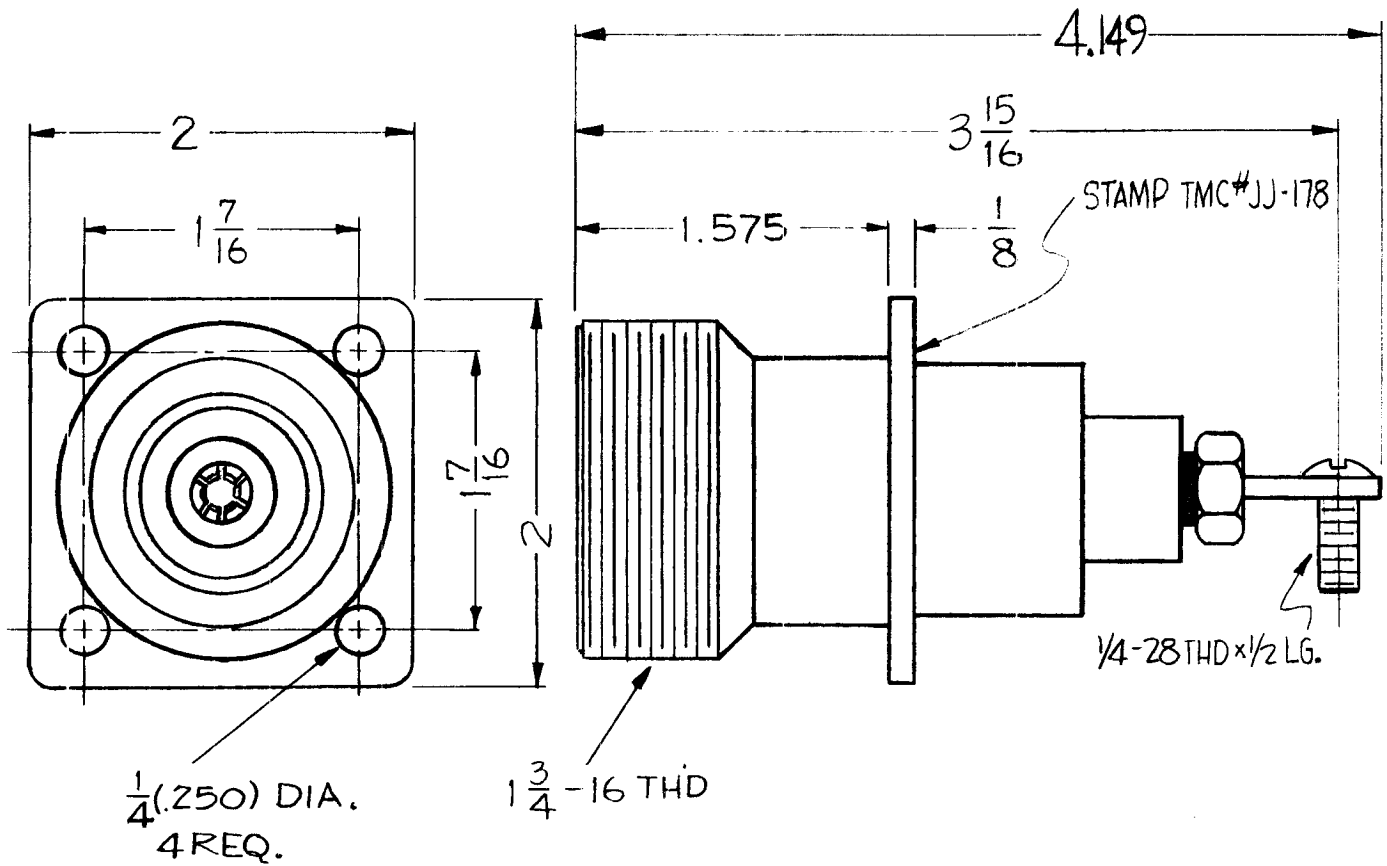
SPECIFICATIONS:

MIDGET SIZE
 POLARIZED
 10 AMPS, 250 VOLTS
 15 AMPS, 125 VOLTS

DIM. REF. UNLESS OTHERWISE SPECIFIED

ISSUE	ITEM	CHANGED FROM	DATE	CH. NO.	DRAFTS	CHECKER	ENG. APP.	REQ.	ITEM	PART NO.	DESCRIPTION	SYMBOL
											THE TECHNICAL MATERIEL CORP. MAMARONECK, NEW YORK	
E		1.223 MAX DIM. WAS 1.218; ADDED REF TO 1.000 & DIM. REF. NOTE	6/15/66	16412	JL	OCB	QC				STOCK SIZE	
A		UPDATED PICTORIAL	4/4/66	16053	HCA	OCB	QC				MATERIAL	
											J.C. BIELE	
											DRAWN	
											CHECKED	
												FINAL APPROVAL
												JJ-175
												B

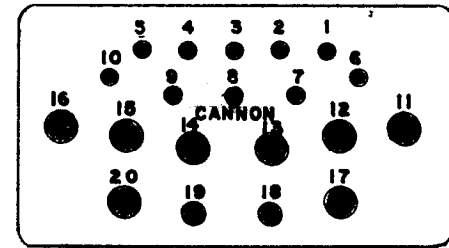
REQ. PER UNIT	USED ON			JJ-178	A
	MODEL	ASS'Y. NO.	DATE		
			9-17-59		



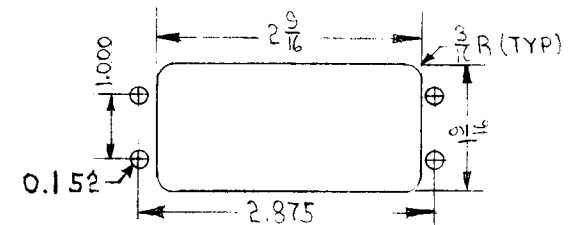
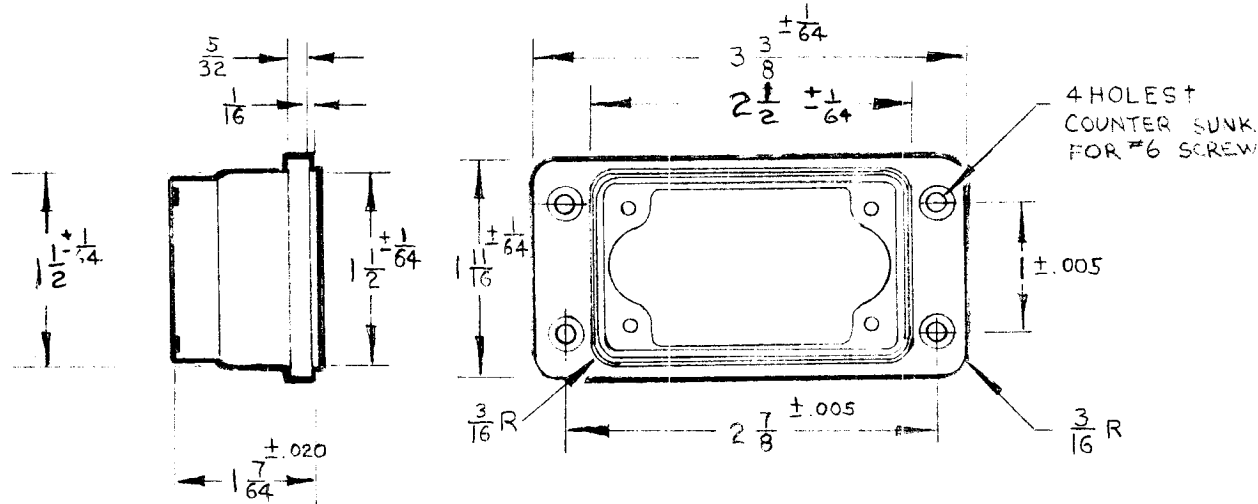
SPECIFICATIONS
 SERIES ~ LC
 NO. OF CONTACTS ~ ONE (1)
 TYPE OF CONTACT ~ FEMALE
 DIELECTRIC ~ TEFLON
ELECTRICAL DATA
 MAX. PEAK OPER. VOLT. ~ 10KV
 NOM. IMPEDANCE ~ 50 Ω
CABLE ACCOMODATIONS
 TYPE ~ TERMINAL END
 MATES^w/UG-156 A/U
MATERIAL
 EXTERNAL PARTS ~ BRASS
 CONTACTS ~ BERYLLIUM COPPER
FINISH
 EXTERNAL PARTS ~ SILVER
 PLATE & RHODIUM FLASH.
 CONTACTS ~ SILVER PLATE
 & GOLD FLASH.

REQ.	ITEM	PART NO.	DESCRIPTION			SYMBOL
			THE TECHNICAL MATERIEL CORP.			
			MAMARONECK, NEW YORK			
			CONNECTOR, RECEPTACLE			
			(FEED THRU)			
			MATERIAL			
			J.C. Biele	J. De	APB	
			DRAWN	CHECKED	FINAL APPROVAL	
					JJ-178 A	
			FINISH & SPEC. NO.			
			ELEC. DES. APP	MECH. DES. APP		

REQ. PER UNIT 1	USED ON			JJ-180	A
	MODEL	ASS'Y. NO.	DATE		
		GPT-40K	1-21-60		



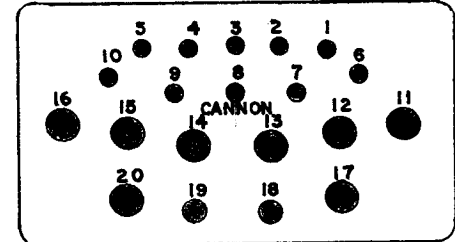
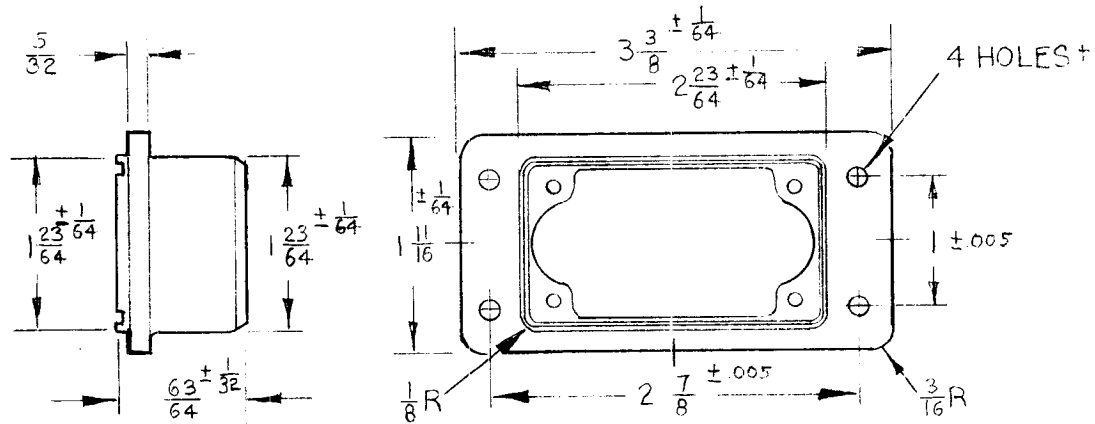
INSERT ARRANGEMENTS



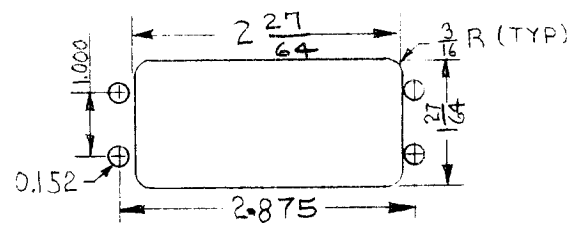
MOUNTING DETAIL

REQ.	ITEM	PART NO.	DESCRIPTION				SYMBOL
			THE TECHNICAL MATERIEL CORP.				
			MAMARONECK, NEW YORK				
			CONNECTOR RECEPTACLE,				
A	TO 4 HOLES ADD COUNTER SUNK FOR #6 SCREW.	8-9-66 16738 RME	ELECTRICAL (MALE)				
ISSUE	ITEM	CHANGED FROM	DATE	CH. NO.	DRAFTS	CHECKER	ENG. APP.
TOLERANCES			SCALE: S-401-91 (DPD-G20-34P-16)				
DEC. DIM. ±			MAXIMUM ALLOWABLE TOLERANCES HAVE BEEN DETERMINED AND ANY DEVIATIONS WILL BE CAUSE FOR REJECTION. REMOVE ALL BURRS AND SHARP EDGES				
FRAC. DIM. ±							
ANGULAR DIM. ±							
TYPE & TEMPER		HEAT TREAT. SPEC.	DRAWN	CHECKED	FINAL APPROVAL		
					JJ-180		
FINISH & SPEC. NO.		ELEC. DES. APP	MECH. DES. APP		A		

REQ. PER UNIT	USED ON			JJ-181	A
	MODEL	ASS'Y. NO.	DATE		
1		GPT 40K	1-21-60		



INSERT ARRANGEMENTS



MOUNTING DETAIL

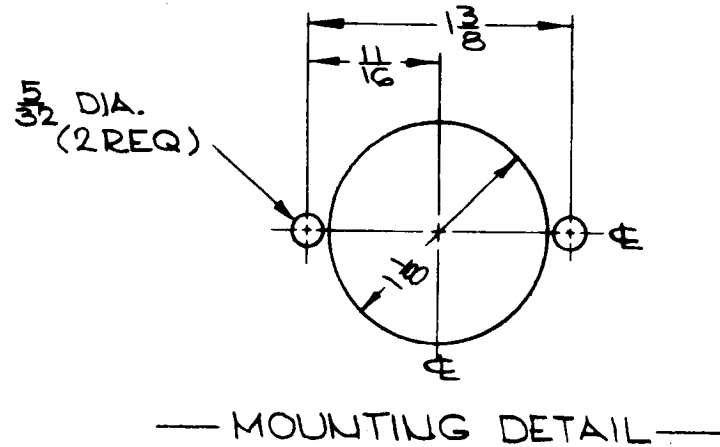
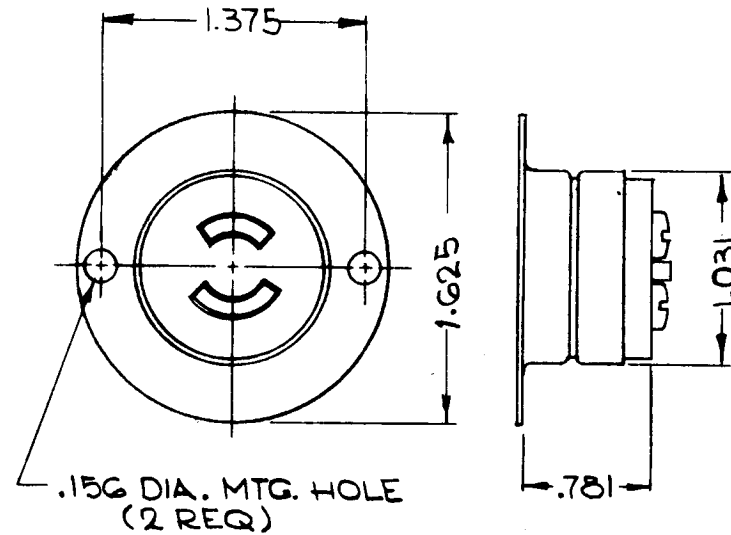
ISSUE	ITEM	CHANGED FROM	DATE	CH. NO.	DRAFTS	CHECKER	ENG. APP.	REQ.	ITEM	PART NO.	DESCRIPTION	SYMBOL	
											THE TECHNICAL MATERIEL CORP. MAMARONECK, NEW YORK CONNECTOR PLUG ELECTRICAL (FEMALE)		
										STOCK SIZE			
A		MTG DET. CLARIFIED	3/25/60	+	CK	1/10	QB			MATERIAL			
		TOLERANCES	SCALE: S-401-91 (DPD-G20-33S-1G)										
		DEC. DIM. ± FRAC. DIM. ± ANGULAR DIM. ±	MAXIMUM ALLOWABLE TOLERANCES HAVE BEEN DETERMINED AND ANY DEVIATIONS WILL BE CAUSE FOR REJECTION. REMOVE ALL BURRS AND SHARP EDGES										
										FINISH & SPEC. NO.	ELEC. DES. APP	MECH. DES. APP	
											JJ-181	A	

STANDARD DRAWING

SPECIFICATIONS

1. QUANTITY OF CONTACTS: 2
2. QUANTITY OF CONNECTOR MATING ENDS:
3. CONTACT DATA
 - A. QUANTITY OF IDENTICAL CONTACTS: 2
 - B. TYPE: FEMALE
 - C. STYLE: BLADE
 - D. CURRENT RATING: 10A @ 250V, 15A @ 125V
 - E. ACWV: 125V, 250V
 - F. CONNECTED TO SHELL: NO
 - G. WIRED FOR EXT. GRD.: NO
 - H. MATERIAL: BRASS
4. DIELECTRIC: BROWN BAKELITE
5. SHELL DATA
 - A. ENCLOSING: PARTIALLY ENCLOSED
 - B. MATERIAL: BRASS
 - C. FINISH: NICKEL PLATE
 - D. CORROSION RESISTANT: YES
6. POLARIZATION: CONTACT SHAPE
7. LOCKING DATA
 - A. TYPE: TWIST LOCK
8. CABLE DATA
 - A. WIRE ACCOMMODATED: #14 MAXIMUM
 - B. CABLE CLAMP: NONE
9. MATES WITH: PL171

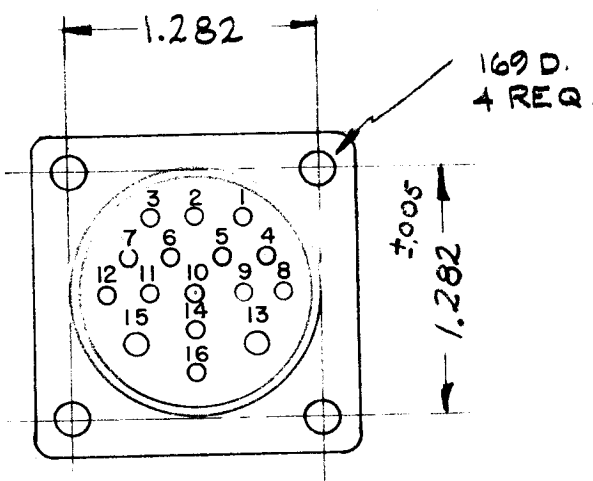
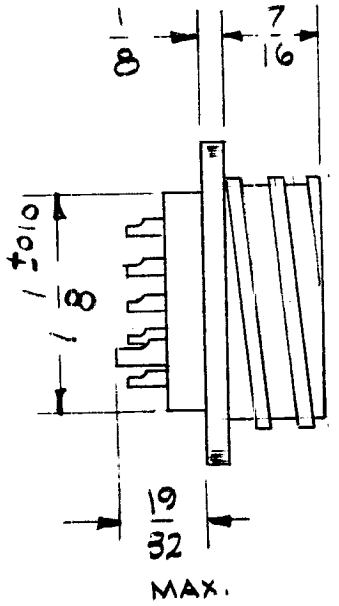
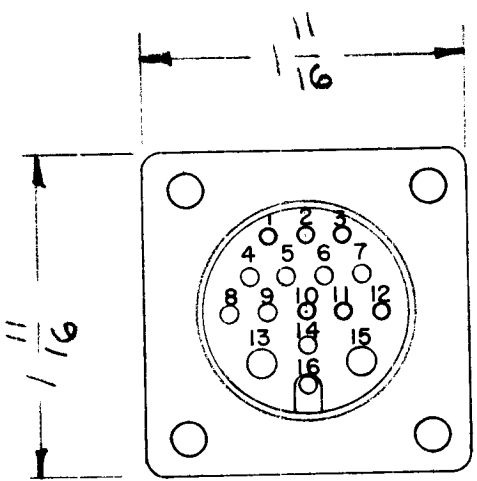
REQ. PER UNIT	USED ON			JJ-182	A
	MODEL	ASS'Y. NO.	DATE		
	GPT-10K				



SYM	DESCRIPTION	DATE	CH. NO.	DRAFTS	CHECKER	ENG. APP.	REQ. ITEM	PART NO.	POSE	DESCRIPTION	SYMBOL					
A	REVISED & UPDATED	12/18/63	10601	AD	Jide	JFB				THE TECHNICAL MATERIEL CORP. MAMARONECK. NEW YORK						
										CONNECTOR, RECEPTACLE, ELECTRICAL						
										TWIST LOCK TYPE (FEMALE)						
UNLESS OTHERWISE SPECIFIED DIMENSIONS ARE IN INCHES AND INCLUDE CHEMICALLY APPLIED OR PLATED FINISHES							SCALE	DO NOT SCALE								
DECIMALS .X ± .05 .XX ± .01 .XXX ± .005							FRACTIONS ± 1/64 ANGLES ± 0° 30'	CODE	S401-43 (7466)			TYPE & TEMPER	HEAT TREAT. SPEC.	DRAWN	CHECKED	FINAL APPROVAL
												JC 11/18/63	MDY 11-9-63	JFB		
															JJ-182	
															A	

REQ. PER UNIT	USED ON		
	MODEL	ASS'Y. NO.	DATE
1	CLL-1		
1	CHL-1		
1	CMO-1		

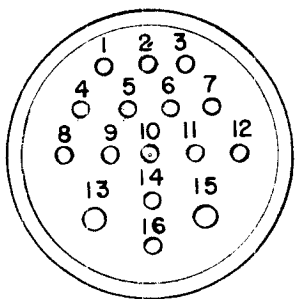
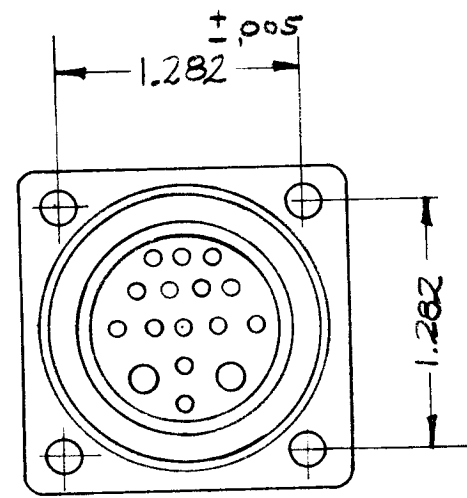
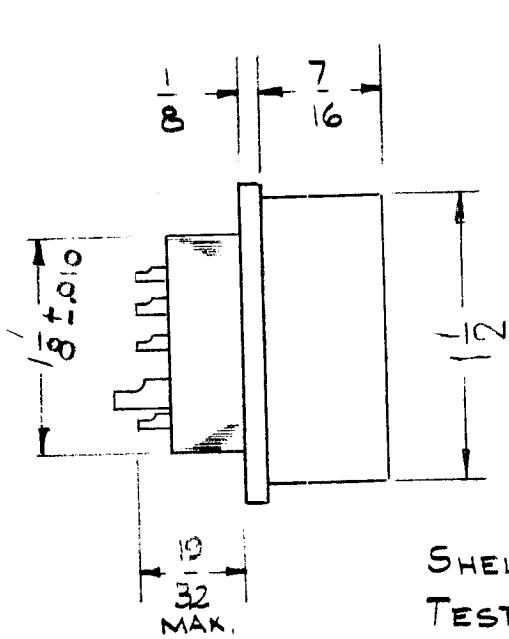
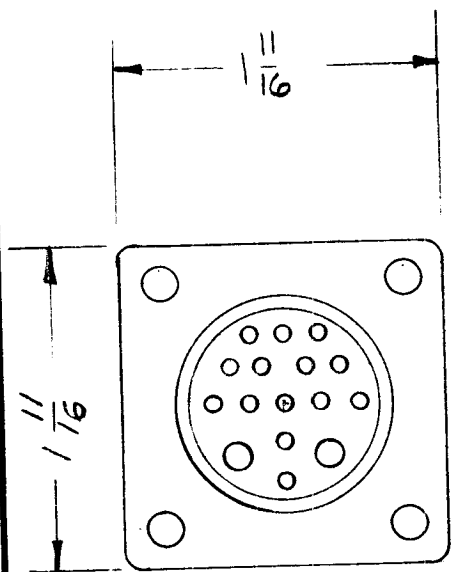
JJ-183



SHELL - ALUMINUM ALLOY CADMIUM PLATE
 TEST VOLT - 1300 VRMS 60 CPS
 CONTACTS ~ 14 #16 WIRES; 1-12 INCL + 14 & 16
 2 - #10 WIRES, 13 & 15
 CONTACT CURRENT RATING #10-30AMPS
 #16-10AMPS
 CONTACTS - BRASS, SILVER PLATE
 MATES w/ PL-186

REQ.	ITEM	PART NO.	DESCRIPTION	SYMBOL					
			THE TECHNICAL MATERIEL CORP. MAMARONECK, NEW YORK						
		STOCK SIZE	CONNECTOR, RECEPTACLE, MALE, 16 CONTACTS						
		MATERIAL							
ISSUE	ITEM	CHANGED FROM	DATE	CH. NO.	DRAFTS	CHECKER	ENG. APP.		
TOLERANCES			SCALE: 5401-91 (SK-C16-32SL)						
DEC. DIM. ± FRAC. DIM. ± ANGULAR DIM. ±			MAXIMUM ALLOWABLE TOLERANCES HAVE BEEN DETERMINED AND ANY DEVIATIONS WILL BE CAUSE FOR REJECTION. REMOVE ALL BURRS AND SHARP EDGES						
TYPE & TEMPER		HEAT TREAT. SPEC.		DRAWN		CHECKED		FINAL APPROVAL	
FINISH & SPEC. NO.		ELEC. DES. APP		MECH. DES. APP		JJ-183			

REQ. PER UNIT 3	USED ON			JJ-184	A
	MODEL CPP-2	ASS'Y. NO.	DATE		



SHELL - ALUMINUM ALLOY - CADMIUM PLATE
 TEST VOLT 1300 VRMS 60 CPS
 CONTACTS - 14 - #16 WIRES, 1-12 INCL. + 14 + 16
 2 - #10 WIRES, 13 & 15
 CONTACT CURRENT RATING #10-30 AMPS
 #16-10 AMPS
 CONTACTS - BRASS, SILVER PLATED
 MATES: W/PL-187

REQ.	ITEM	PART NO.	DESCRIPTION			SYMBOL
			THE TECHNICAL MATERIEL CORP.			
			MAMARONECK, NEW YORK			
			CONNECTOR RECEPTACLE,			
			FEMALE, 16 CONTACTS			
			MATERIAL			
			DRAWN			
			CHECKED			
			FINAL APPROVAL			
			ELEC. DES. APP			JJ-184
			MECH. DES. APP			A

ISSUE	ITEM	CHANGED FROM	DATE	CH. NO.	DRAFTS	CHECKER	ENG. APP.
A	1	DIM. 1/2 ADDED	11-16-60	3468	2	WJZ	WJZ

TOLERANCES: SCALE: S-401-91 (RSK C12-315L)

DEC. DIM. ±
 FRAC. DIM. ±
 ANGULAR DIM. ±

MAXIMUM ALLOWABLE TOLERANCES HAVE BEEN DETERMINED AND ANY DEVIATIONS WILL BE CAUSE FOR REJECTION:
 REMOVE ALL BURRS AND SHARP EDGES

SPECIFICATIONS

SERIES ~ GDS
 NO. OF CONTACTS ~ ONE (1)
 TYPE OF CONTACTS ~ FEMALE
 DIELECTRIC ~ TEFLON

ELECTRICAL DATA

MAX. PEAK CPR. VOLT. ~
 NOM. IMPEDANCE ~

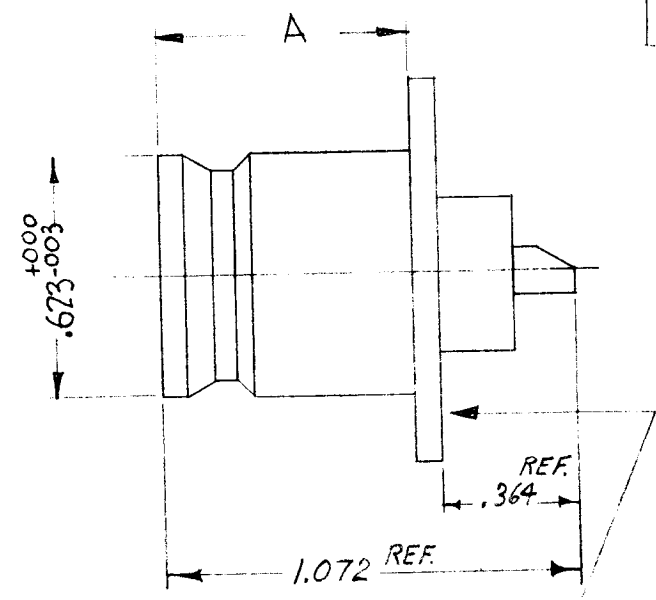
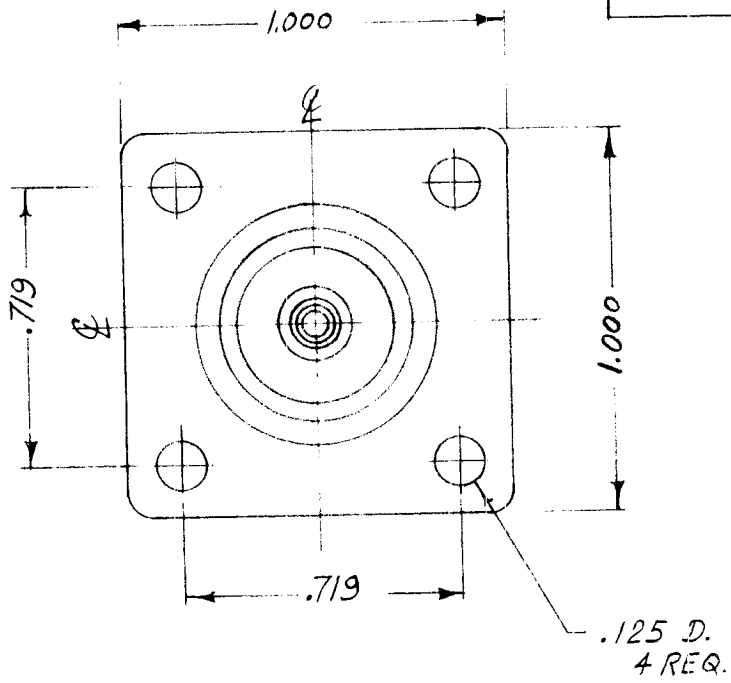
REQ. PER UNIT	USED ON		
	MODEL	ASSY. NO.	DATE
			6-21-60

JJ-187 B

CABLE ACCOMODATIONS
 TYPE ~ SOLDER ENDS

MATERIAL
 EXTERNAL PARTS ~ BRASS
 CONTACTS ~ BERYLLIUM COPPER

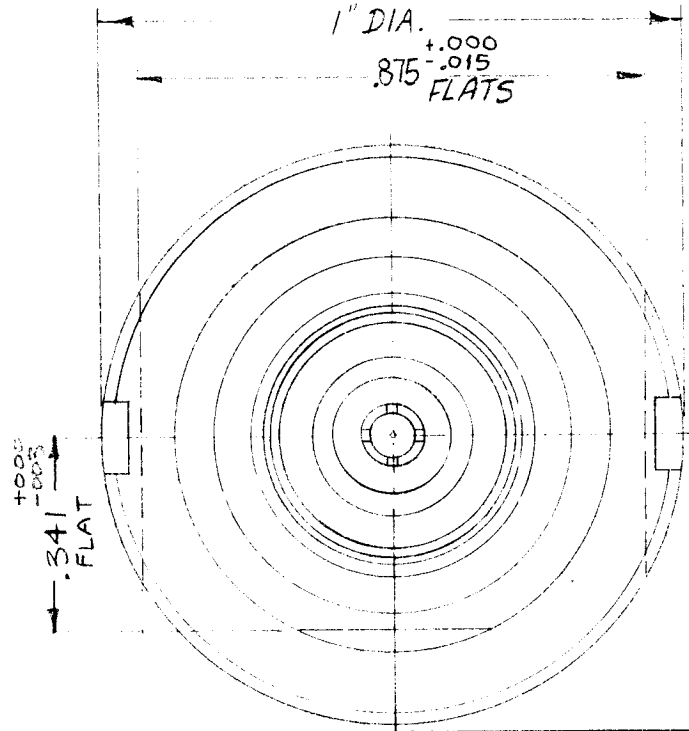
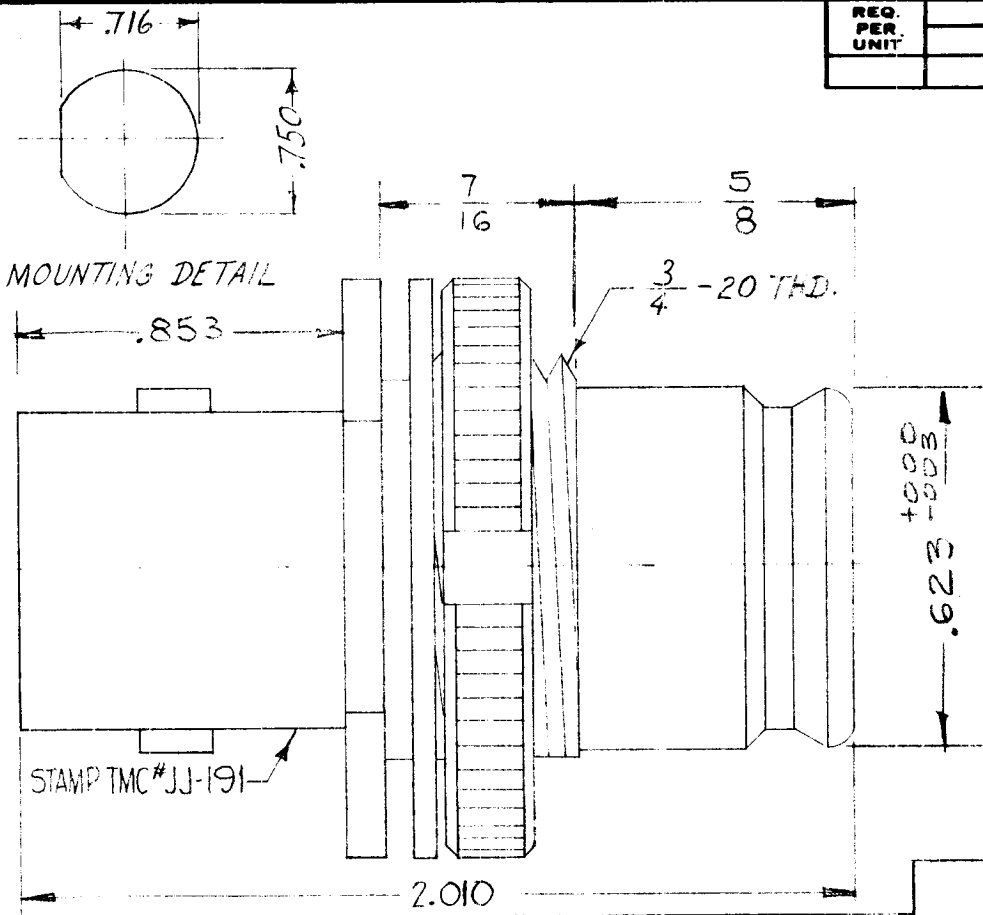
FINISH
 EXT. PARTS ~ SILVER PLATE
 & RHODIUM FLASH
 CONTACTS ~ SILVER PLATE
 & GOLD FLASH.



TMC P/N	DIM "A"
JJ187	.630
JJ187-2	.817

ISSUE	ITEM	CHANGED FROM	DATE	CH. NO.	DRAFTS	CHECKER	ENG. APP.	REQ.	ITEM	PART NO.	DESCRIPTION	SYMBOL	
B		"A" DIM ON PICT WAS .630, STAMP NOTE REV	11.18.66	17258	WHO	<i>[Signature]</i>	<i>[Signature]</i>				THE TECHNICAL MATERIEL CORP. MAMARONECK, NEW YORK CONNECTOR, RECEPTACLE SERIES GDS.	B	
A	1	SPECIFICATIONS added	5/8/61		<i>[Signature]</i>	<i>[Signature]</i>	<i>[Signature]</i>						
TOLERANCES			SCALE: S-401-70 (9192)										
DEC. DIM. ± FRAC. DIM. ± ANGULAR DIM. ±			MAXIMUM ALLOWABLE TOLERANCES HAVE BEEN DETERMINED AND ANY DEVIATIONS WILL BE CAUSE FOR REJECTION; REMOVE ALL BURRS AND SHARP EDGES										
								TYPE & TEMPER	HEAT TREAT. SPEC.	DRAWN	CHECKED	FINAL APPROVAL	
								FINISH & SPEC. NO.		ELEC. DES. APP	MECH. DES. APP		

REQ. PER UNIT	USED ON			JJ-191	B
	MODEL	ASSY. NO.	DATE		
			9-8-60		



SPECIFICATIONS

SERIES ~ "QDS" To "C"

NO OF CONTACTS ~ ONE (1)

TYPE OF CONTACTS ~ FEMALE

DIELECTRIC ~ TEFLON

ELECTRICAL DATA

MAX. PEAK OPER. VOLT. ~

NOMINAL IMPEDANCE ~

MATING ACCOMMODATIONS

TYPE ~ "N" SERIES

MATERIAL

EXTERNAL PARTS ~ BRASS

CONTACTS - BERYLLIUM COPPER

FINISH

EXTERNAL PARTS ~ SILVER PLATE

+ RHODIUM FLASH

CONTACTS ~ SILVER PLATE + GOLD FLASH.

REQ.	ITEM	PART NO.	DESCRIPTION	SYMBOL
<p align="center">THE TECHNICAL MATERIEL CORP. MAMARONECK, NEW YORK</p>				
<p align="center">CONNECTOR, ADAPTER QDS TO C, FEMALE</p>				
STOCK SIZE				
MATERIAL				
TYPE & TEMPER		HEATTREAT. SPEC.	DRAWN	CHECKED
FINISH & SPEC. NO.		ELEC. DES. APP		MECH. DES. APP
TOLERANCES		SCALE: 50:1 (9138)		
DEC. DIM. ± .005		MAXIMUM ALLOWABLE TOLERANCES HAVE BEEN DETERMINED AND ANY DEVIATIONS WILL BE CAUSE FOR REJECTION.		
FRAC. DIM. ± 1/64		REMOVE ALL BURRS AND SHARP EDGES		
ANGULAR DIM. ±				
ISSUE	ITEM	CHANGED FROM	DATE	CH. NO.
E	1	Specs Revised	5-22-60	+
A	2	DIM 7/16 E5/8 Added	12-9-60	3537
	1	DIM 2.010 was 1.708		
CHECKER		ENG. APP.		
DRAWN		CHECKED		
FINAL APPROVAL		JJ-191		

CONTACTS	MFG. #
4 PIN	126-214
4 SOCKET	Unavail.
5 PIN	126-216
5 SOCKET	126-218
7 PIN	126-197
7 SOCKET	126-198
9 PIN	126-219
9 SOCKET	126-221

REQ. PER UNIT	USED ON		
	MODEL	ASS'Y. NO.	DATE
2	CHG		10-7-60

JJ-193

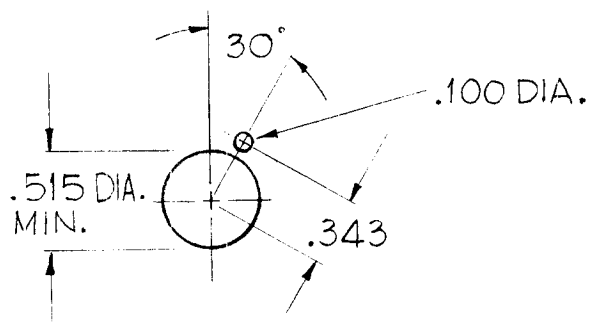
ELECTRICAL SPEC.

VOLTAGE BREAKDOWN:
2,000V RMS 60 CPS
AT SEA LEVEL.

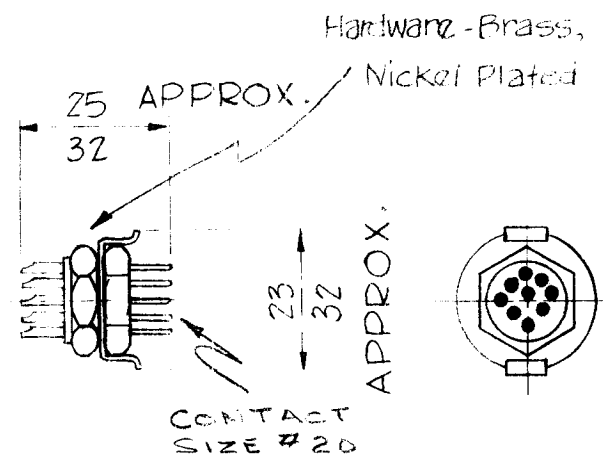
700V RMS 60 CPS AT
50,000 FT. ALTITUDE

CURRENT RATING:
7.5 AMPS.

CONTACTS-SILVER BASE
PLATED, GOLD FINISH



MOUNTING DETAIL



TMC PARTNUMBER TO BE IN THE FOLLOWING FORM :

JJ-193 - 9 - P

Basic TMC
Part #

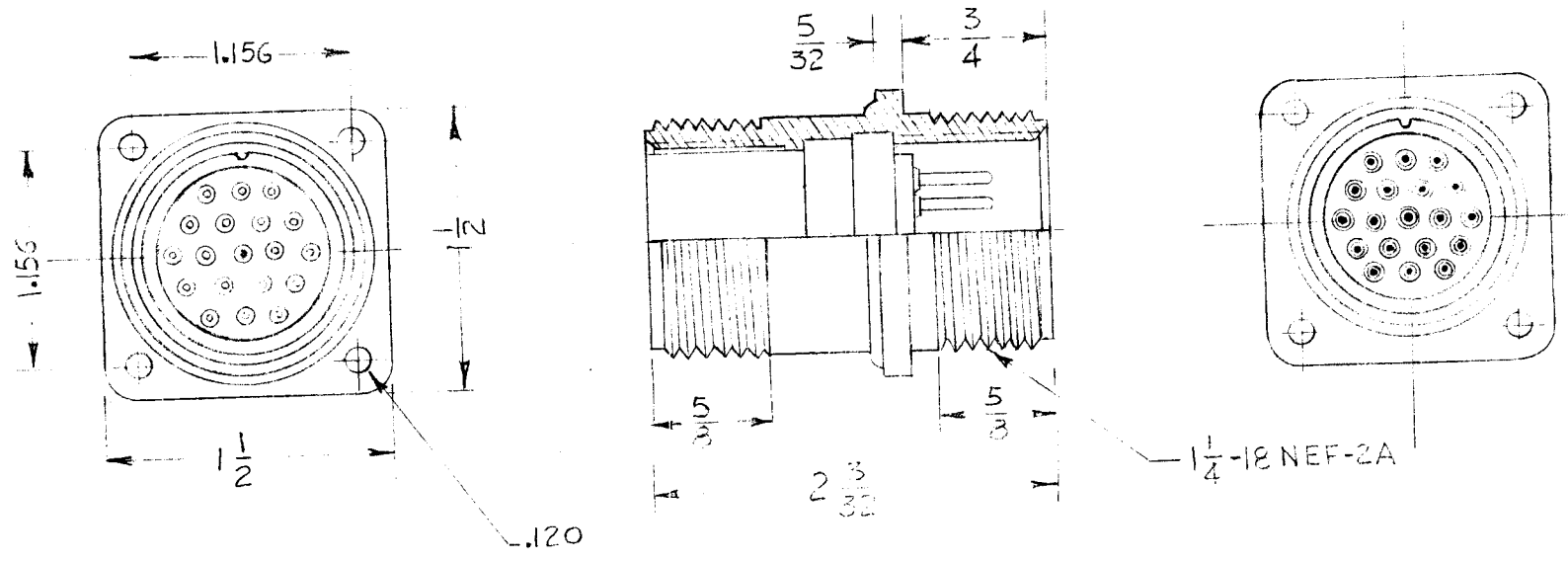
NO of CONTACTS
AVAILABLE
IN 4, 5, 7, & 9

POLARITY
P= MALE (PIN)
S= FEMALE (SOCKET)

NOTE ~ MATES WITH TMC NO. PL-189

REQ.	ITEM	PART NO.	DESCRIPTION	SYMBOL						
			THE TECHNICAL MATERIEL CORP. MAMARONECK, NEW YORK CONNECTOR, RECEPTACLE - MINATURE HEXAGON							
		STOCK SIZE								
		MATERIAL								
ISSUE	ITEM	CHANGED FROM	DATE	CH. NO.	DRAFTS	CHECKER	ENG. APP.	J.C. Biele	WJ	
TOLERANCES			SCALE:							
DEC. DIM. ± FRAC. DIM. ± ANGULAR DIM. ±			MAXIMUM ALLOWABLE TOLERANCES HAVE BEEN DETERMINED AND ANY DEVIATIONS WILL BE CAUSE FOR REJECTION. REMOVE ALL BURRS AND SHARP EDGES							
		TYPE & TEMPER	HEATTREAT. SPEC.	DRAWN		CHECKED		FINAL APPROVAL		
		FINISH & SPEC. NO.		ELEC. DES. APP		MECH. DES. APP		JJ-193		

REQ. PER UNIT	USED ON		
	MODEL	ASSY. NO.	DATE
1	KIT-101		JJ-196



							REQ.	ITEM	PART NO.	DESCRIPTION	SYMBOL			
										THE TECHNICAL MATERIEL CORP.				
									STOCK SIZE	MAMARONECK, NEW YORK				
									MATERIAL	ADAPTER, CONNECTOR,				
										BULK HEAD				
ISSUE	ITEM	CHANGED FROM	DATE	CH. NO.	DRAFTS	CHECKER	ENG. APP.			J. Dol	ve	SFM		
TOLERANCES			SCALE: 5/16								CHECKED	FINAL APPROVAL		
DEC. DIM. ±			MAXIMUM ALLOWABLE TOLERANCES HAVE BEEN DETERMINED AND ANY DEVIATIONS WILL BE CAUSE FOR REJECTION. REMOVE ALL BURRS AND SHARP EDGES				TYPE & TEMPER	HEAT TREAT. SPEC.				JJ-196		
FRAC. DIM. ±														
ANGULAR DIM. ±														
							FINISH & SPEC. NO.		ELEC. DES. APP	MECH. DES. APP				