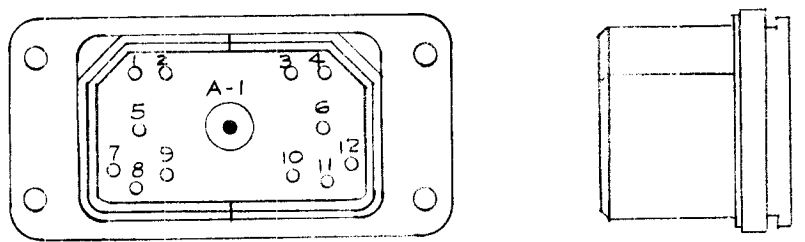


JJ-158-P

Shell Type Split
 Shell Material Aluminum Alloy Die Cast
 Shell Finish Cadmium Plate
 Contact Material Copper Alloy
 Contact Finish Gold Plate
 Insulation Melamine (XXXP)

Contact Code
 ● = Pin (Male)
 ○ = Socket (Female)

All Dimensions Same as Above



JJ-158-S

Contact Rating
 12 - 5amp (#1-12)
 1 - HV 5amp (#A-1)

Note:
 JJ-158-P mates with PL-160-S
 JJ-158-S mates with PL-160-P

TMC NO. JJ-158-S (MFG. DPX-13HV1-33S)

REF. CANNON ELECT. CO. TYPE DPX-13HV1-33

ISSUE	ITEM	CHANGED FROM	DATE	CH. NO.	DRAFTS	CHECKER	ENG. APP.
TOLERANCES			SCALE:				
DEC. DIM. ±			MAXIMUM ALLOWABLE TOLERANCES HAVE BEEN DETERMINED AND ANY DEVIATIONS WILL BE CAUSE FOR REJECTION.				
FRAC. DIM. ± 1/64			REMOVE ALL BURRS AND SHARP EDGES				
ANGULAR DIM. ±							

REQ. ITEM	PART NO.	DESCRIPTION	SYMBOL
		THE TECHNICAL MATERIEL CORP. MAMARONECK. NEW YORK	
	STOCK SIZE	CONNECTOR, RECEPTACLE	
	MATERIAL		
		165-1-58	
	TYPE & TEMPER	HEAT TREAT. SPEC.	DRAWN
			CHECKED
	FINISH & SPEC. NO.	ELEC. DES. APP.	MECH. DES. APP.
			FINAL APPROVAL
			JJ-158