

SPECIFICATIONS

SERIES ~ QDS TO QDS  
 NO. OF CONTACTS ~ ONE (1) each end  
 TYPE OF CONTACTS ~ FEMALE  
 DIELECTRIC ~ TEFLON  
ELECTRICAL DATA  
 MAX. PEAK VOLTAGE ~ 5KV  
 NOM. IMPEDANCE ~ 50Ω

MATERIAL

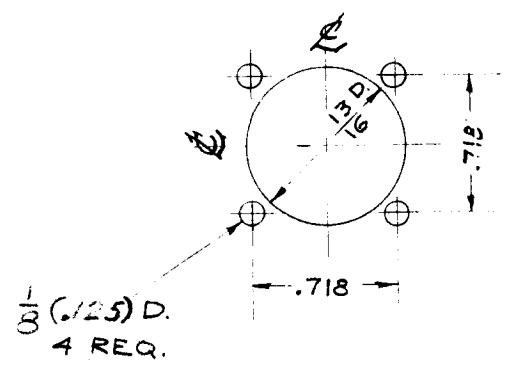
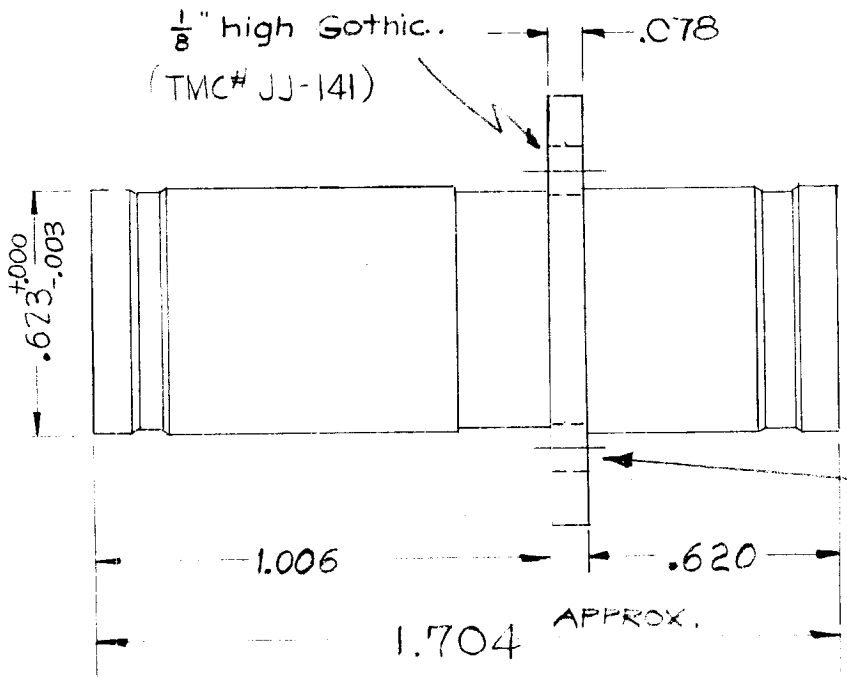
EXTERNAL PARTS ~ BRASS  
 CONTACTS ~ BERYLLIUM  
 COPPER

FINISH

EXTERNAL PARTS ~ SILVER  
 PLATE & RHODIUM  
 FLASH.  
 CONTACTS ~ SILVER PLATE  
 & GOLD FLASH.

REQ. PER UNIT	USED ON		JJ-141	G
	MODEL	ASS'Y. NO.		
			9-5-57	

Metal stamp to be  
 $\frac{1}{8}$ " high Gothic.  
 (TMC# JJ-141)



NOTE:  
 MOUNTING PLATE 1" SQ. (4) 4-40  
 TAPPED HOLES ON .718 Ø.

G		DRILLING PLAN ISOLATED 1.704 & .078 WERE 1.706 & .080	4-12-66	16085	W.W.	JCB	W.A.
F		1/8 (.125) WAS 1/16 (.125) 4-40 WAS 6-32	9/9/65	14764	H.V.	JCB	W.A.
E		1/16 (.0625) WAS 1/8 (.125) 6-32 WAS 4-40	8/27/65	14732	H.V.	JCB	W.A.
D	1	SPECIFICATIONS ADDED	5/8/61		J.M.	JCB	W.A.
C	1	MTG. NOTE ADDED	2-15-61	4186	G.A.F.	JCB	W.A.
B	2	1.006 WAS 1.086 620 WAS 540	8-18-60	2841	R.U.	JCB	W.A.
A		1.086 WAS 1.187, 1.706 WAS 2.004, .080, .540 DIM. APPROX.	11-10-58		J.C.B.	JCB	W.A.

ISSUE	ITEM	CHANGED FROM	DATE	CH. NO.	DRAFTS	CHECKER	ENG. APP.
TOLERANCES			SCALE: S401-70 (1034)				
DEC. DIM. ±			MAXIMUM ALLOWABLE TOLERANCES HAVE BEEN DETERMINED AND ANY DEVIATIONS WILL BE CAUSE FOR REJECTION.				
FRAC. DIM. ± 1/64			REMOVE ALL BURRS AND SHARP EDGES				
ANGULAR DIM. ±							

REQ.	ITEM	PART NO.	DESCRIPTION	SYMBOL
			THE TECHNICAL MATERIEL CORP. MAMARONECK, NEW YORK	
			ADAPTOR, CONNECTOR,	
			QDS TO QDS	
			9-5-57	
			TYPE & TEMPER	HEAT TREAT. SPEC.
			FINISH & SPEC. NO.	
			DRAWN	CHECKED
			ELEC. DES. APP.	MECH. DES. APP.
			JJ-141	G