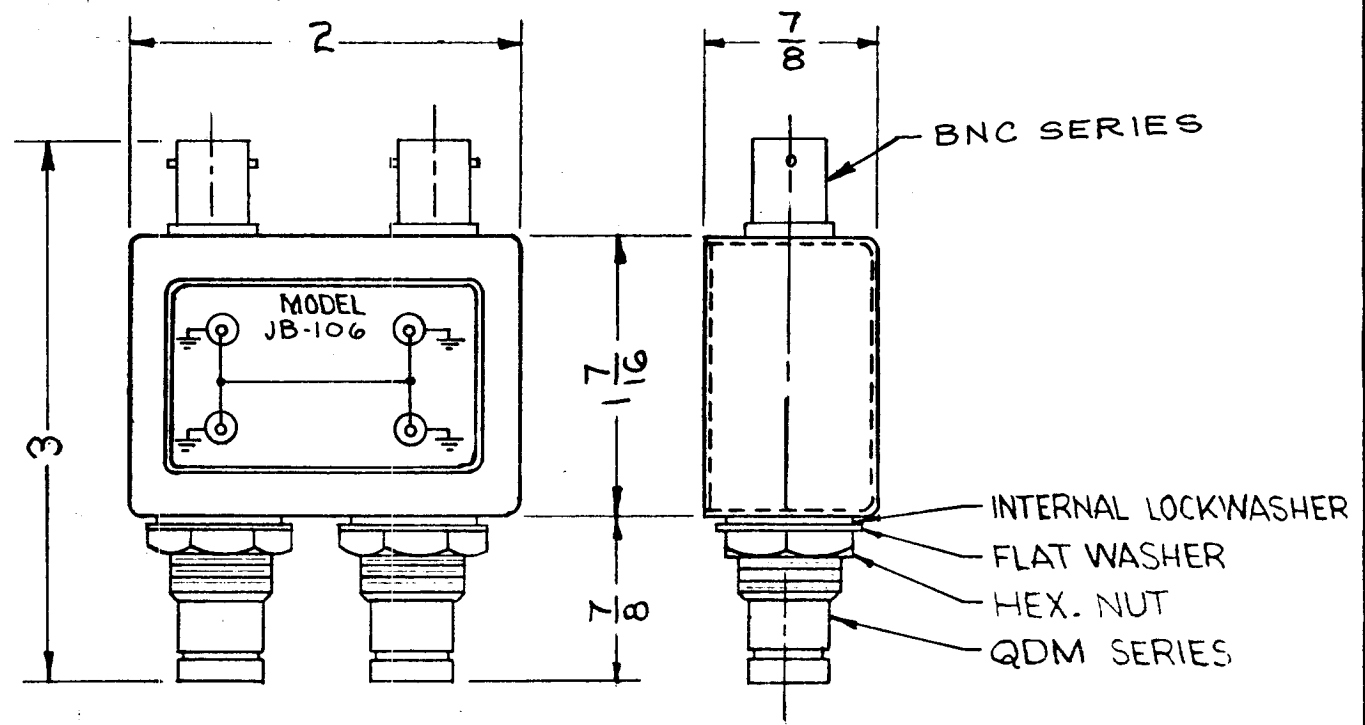


THE CONTENTS OF THIS DRAWING ARE THE EXCLUSIVE PROPERTY OF THE TECHNICAL MATERIEL CORP. ITS UNAUTHORIZED USE OR REPRODUCTION IN WHOLE OR IN PART IS STRICTLY FORBIDDEN.

REQ. PER UNIT	USED ON	
	MODEL	ASS'Y. NO.
16	BJP-40416	DATE
		10-23-62

JB-106

0



NOTES:
CASE - MATERIAL-BRASS
FINISH-S115 TMC SMOOTH
GREY ENAMEL
CONNECTORS - FINISH
BODIES-RHODIUM FLASH
CONTACTS-GOLD FLASH

REQ.	ITEM	PART NO.	DESCRIPTION	SYMBOL								
			THE TECHNICAL MATERIEL CORP. MAMARONECK, NEW YORK									
			JACK ASSEMBLY									
			DUAL BNC TO DUAL QDM									
0	ORIGINAL RELEASE FOR PRODUCTION	A/28/64										
SYM	DESCRIPTION	DATE	CH. NO.	DRAFTS	CHECKER	ENG. APP.	MATERIAL					
UNLESS OTHERWISE SPECIFIED:		2A-3687		M.TANTILLO		DRAWN		CHECKED		FINAL APPROVAL		
DIMENSIONS ARE IN INCHES		MAXIMUM ALLOWABLE TOLERANCES HAVE BEEN DETERMINED AND ANY DEVIATIONS WILL BE CAUSE FOR REJECTION.		TYPE & TEMPER		HEATTREAT.SPEC.		DRAWN		CHECKED		
TOLERANCES ON		REMOVE ALL BURRS AND SHARP EDGES		SEE NOTES		FINISH & SPEC. NO.		ELEC. DES. APP.		MECH. DES. APP.		
FRAC. ± 1/64 DEC. ± .005 ANGLES ± 1/2°										JB-106		0