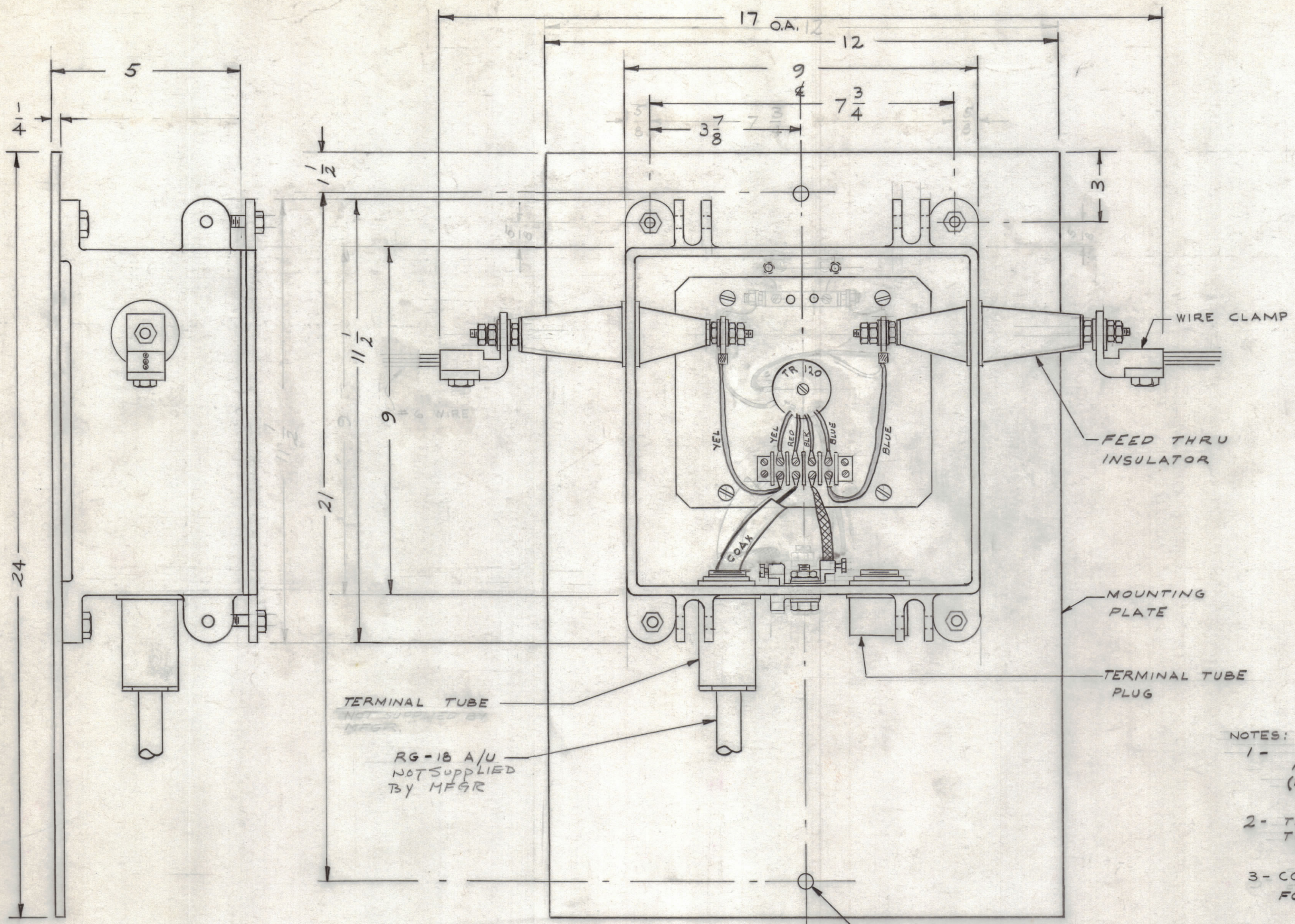


NOTICE TO PERSONS RECEIVING THIS DRAWING
 THE TECHNICAL MATERIEL CORPORATION claims proprietary right in the material disclosed herein. This drawing is issued in confidence for engineering information only and may not be reproduced or used to manufacture anything shown hereon without permission from THE TECHNICAL MATERIEL CORPORATION to the user. This drawing is loaned for mutual assistance and is subject to recall at any time.
 Property of:
 THE TECHNICAL MATERIEL CORPORATION
 MAMARONECK, NEW YORK



- NOTES:**
- 1 - PROVIDE LOOP FOR EXPANSION AND CONTRACTION IN ALL WIRES. (MINIMUM 1/2" SLACK)
 - 2 - TERMINAL TUBE AND TERMINAL TUBE PLUG ARE INTERCHANGEABLE
 - 3 - COVER REMOVED IN PLAN VIEW FOR CLARITY.

TERMINAL TUBE
 NOT SUPPLIED BY MFR.
 RG-18 A/U
 NOT SUPPLIED BY MFR.

SYMBOL	ZONE	DESCRIPTION	DATE	CH. NO.	DRAFTS	CHECKER	ENG. APP.
A	4/E	ADDED TERMINAL STRIP AND REWIRED (ATA-3) ANTENNA TERMINATING ASSEMBLY	2/28/61	4305	P		#05
UNLESS OTHERWISE SPECIFIED:			SCALE 4-IN-1147				
DIMENSIONS ARE IN INCHES			MAXIMUM ALLOWABLE TOLERANCES HAVE BEEN DETERMINED AND ANY DEVIATIONS WILL BE CAUSE FOR REJECTION. REMOVE ALL BURRS & SHARP EDGES				
TOLERANCES ON FRACTIONS ± 1/64			DECIMALS ± .005		ANGLES ± 1/2°		

REQ. PER UNIT	MODEL	PROJECT NUMBER	ASSY. NO.	DATE
	ATA-3	SYM-1072		
USED ON				

REQ. ITEM	PART NO.	DESCRIPTION	SYMBOL
		THE TECHNICAL MATERIEL CORP. MAMARONECK, NEW YORK	
STOCK SIZE		ATA-3	
MATERIAL		ANTENNA TERMINATING ASSEMBLY	
TYPE & TEMPER		HEAT TREAT. SPEC.	
FINISH & SPEC. NO.		ELEC. DES. APP.	MECH. DES. APP.
		C.G.	IN-1144
		SHEET OF	