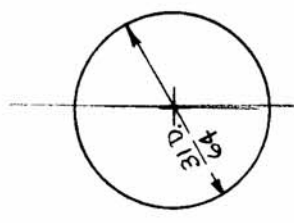
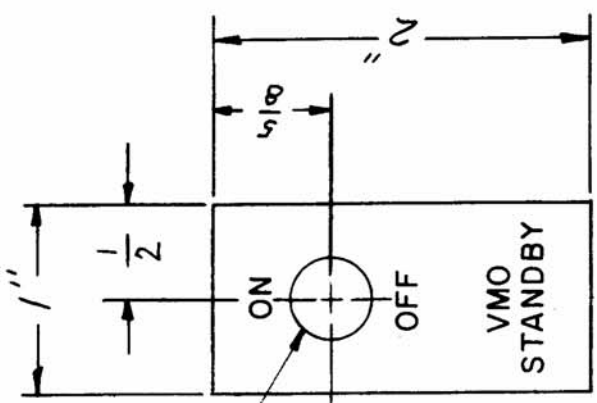


REQ. PER. UNIT	M DEL	USED ON
1	GPT-750( )-1	ASSY. N .
		DATE
		3-5-63

IN-1090 C



SEE DETAIL

NOTE:

STAMPING 1/8" HIGH BLOCK  
 LETTERING - WHITE  
 S-404 YELLOW IRIDITE  
 BACKGROUND GREY ENAMEL  
 S-115

REQ. ITEM	PART NO.	DESCRIPTION	SYMBOL
C	.080	THE TECHNICAL MATERIEL CORP. MAMARONECK, NEW YORK	
B	ALUMINUM	MODIFICATION OF GPT-750( )-1,	
A	MATERIAL	VMO STANDBY SWITCH PLATE	
ISSUE ITEM	5052	MJT 6-24-59	
	H32		
	TYPE & TEMPER	DRAWN	CHECKED
	HEAT TREAT. SPEC.		
	SEE NOTE		
	FINISH & SPEC. NO.	ELEC. DES. APP	MECH. DES. APP

REMOVED KEY  
 CHGD. ENGRAVING  
 7-20-66 RME  
 HEAT TREAT, DETAIL ADDED  
 3-5-63  
 MAT'L, TYPE & TEMP. ADDED  
 7/8/56  
 CHANGED HOLE DIM.  
 FROM 7/16 TO 3/16  
 DATE CH. NO. DRAFTS CHECKER ENG. APP.  
 7/8/56  
 MUT  
 RME  
 RME  
 MUT

TOLERANCES  
 DEC. DIM. ±  
 FRAC. DIM. ±  
 ANGULAR DIM. ±

SCALE:  
 MAXIMUM ALLOWABLE TOLERANCES HAVE  
 BEEN DETERMINED AND ANY DEVIATIONS  
 WILL BE CAUSE FOR REJECTION.  
 REMOVE ALL BURRS AND SHARP EDGES

IN-1090 C