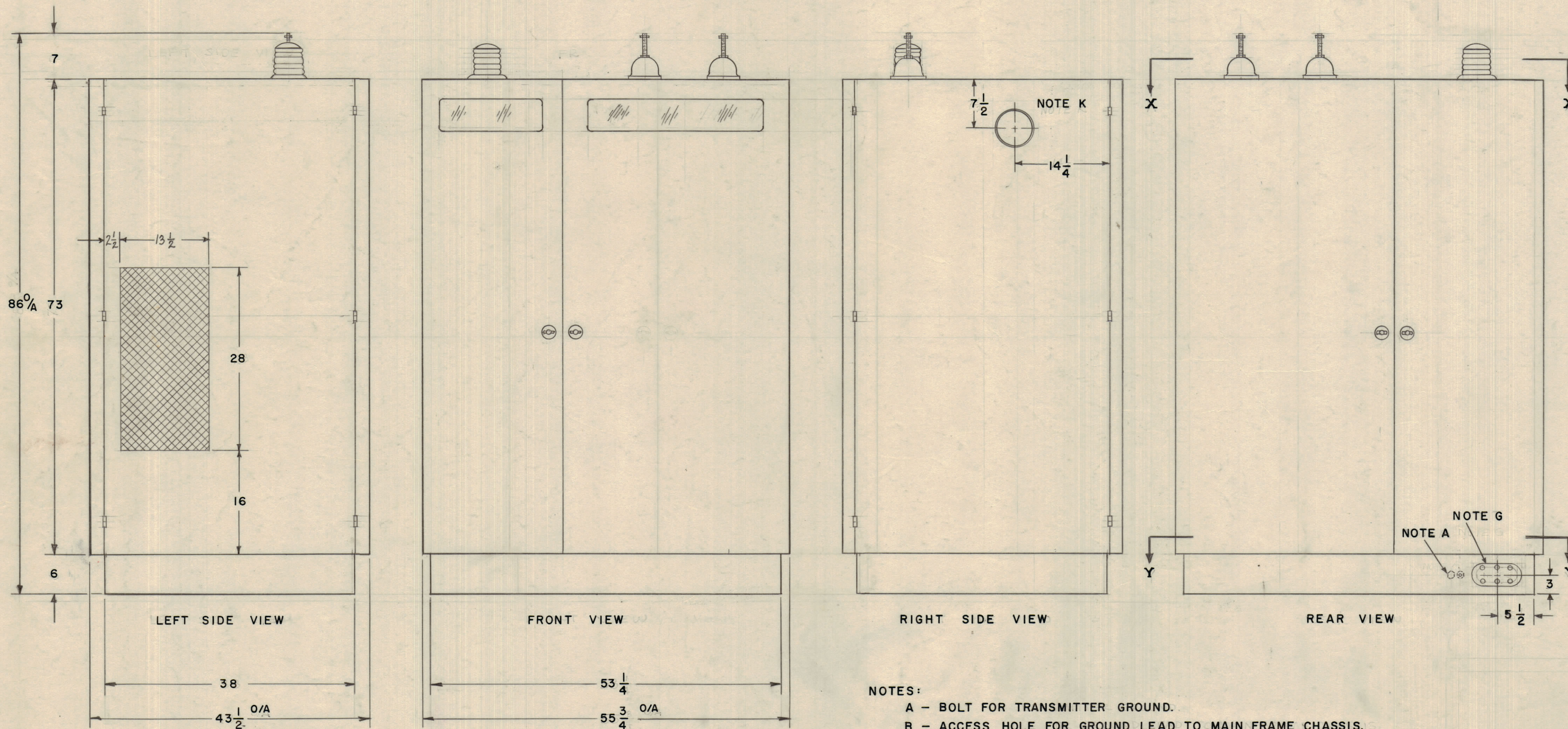


NOTICE TO PERSONS RECEIVING THIS DRAWING

THE TECHNICAL MATERIEL CORPORATION claims proprietary right in the material disclosed herein. This drawing is issued in confidence for engineering information only and may not be reproduced or used to manufacture anything shown hereon without permission from THE TECHNICAL MATERIEL CORPORATION to the user. This drawing is loaned for mutual assistance and is subject to recall at any time.

Property of:
THE TECHNICAL MATERIEL CORPORATION
MAMARONECK, NEW YORK



NOTE:
FOR ASSEMBLY INSTRUCTIONS SEE FIGURE 2-1
(TMC DWG NO. IN-1098)

NOTES:

- A - BOLT FOR TRANSMITTER GROUND.
- B - ACCESS HOLE FOR GROUND LEAD TO MAIN FRAME CHASSIS.
- C - ACCESS HOLE FOR GROUND LEAD TO AUXILIARY FRAME CHASSIS.
- D - ACCESS HOLE FOR 220V 3-PHASE 60 CYCLE POWER INPUT TO MAIN FRAME.
- E - ACCESS HOLE FOR SIGNAL CONDUCTORS INTERCONNECTING TEST EQUIPMENT ON AUXILIARY FRAME TO CIRCUITS EXTERNAL TO TRANSMITTER.
- F - ACCESS HOLES FOR INSULATORS FOR BALANCED ANTENNA.
- G - ACCESS HOLE AUXILIARY TO D AND E.
- H - CLEARANCE HOLES TO PERMIT FRAMES TO BE BOLTED TO BASE.
- I - CLEARANCE HOLES FOR SHOCK MOUNTS TO BE BOLTED TO FRAME.
- J - CLEARANCE HOLES TO PERMIT TRANSFORMER TO BE BOLTED TO FRAME.
- K - ACCESS HOLE FOR CONNECTIONS BETWEEN UNBALANCED OUTPUT CONNECTOR (OR OUTPUT CIRCUIT OF TRANSMITTER) TO 70-OHM ANTENNA.
- L - FRONT AND REAR DOOR SWINGS ARE IDENTICAL.
- M - FOR APPROXIMATE LOCATION ON THIS DRAWING USE $3/32 = 1$ INCH.

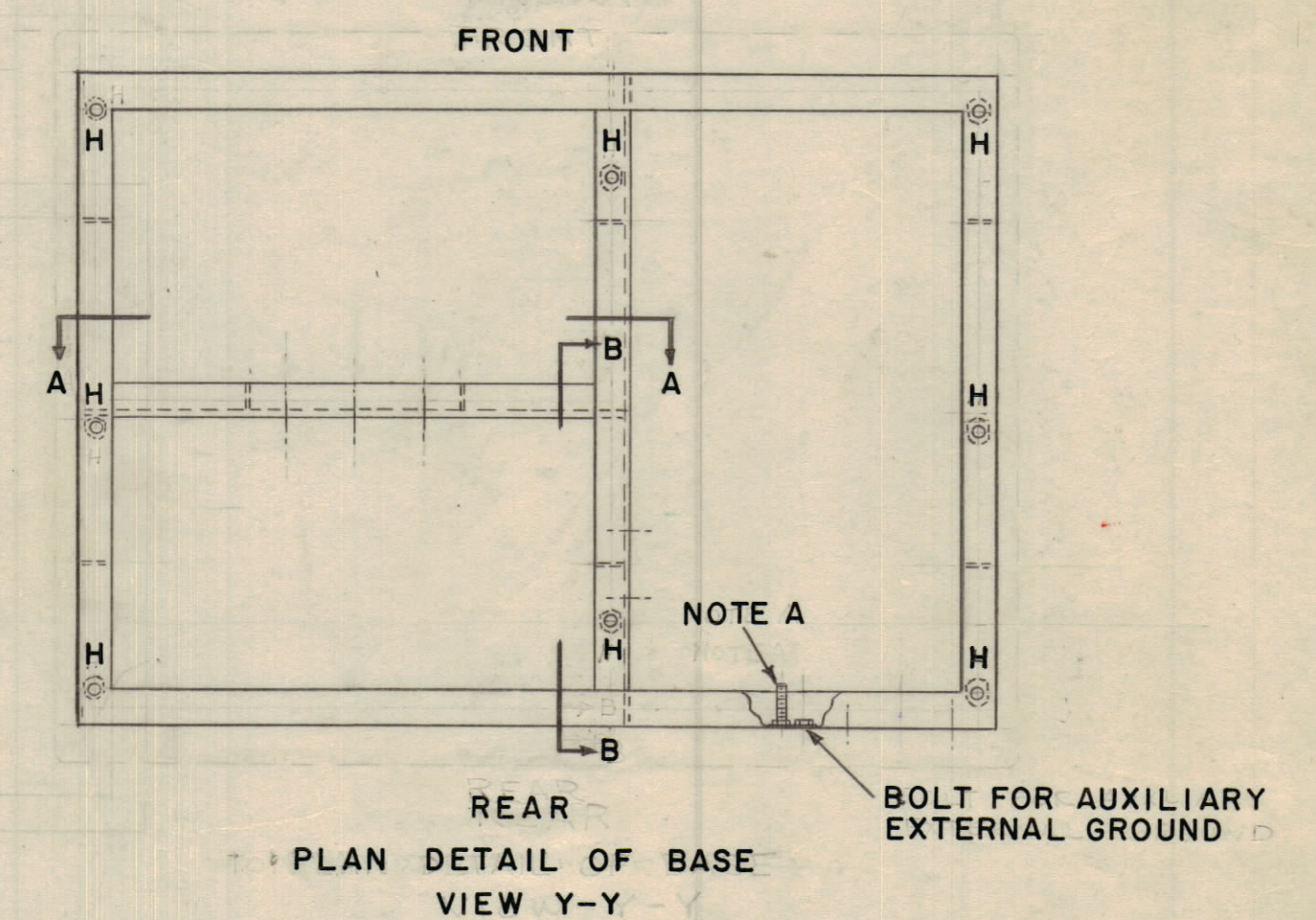
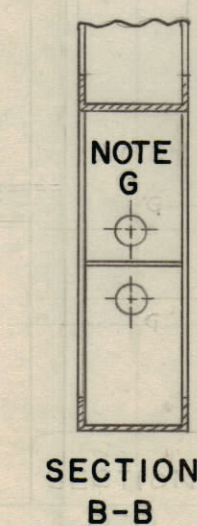
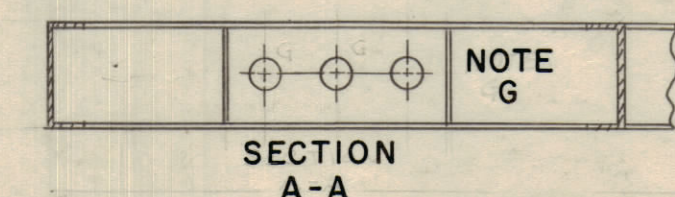
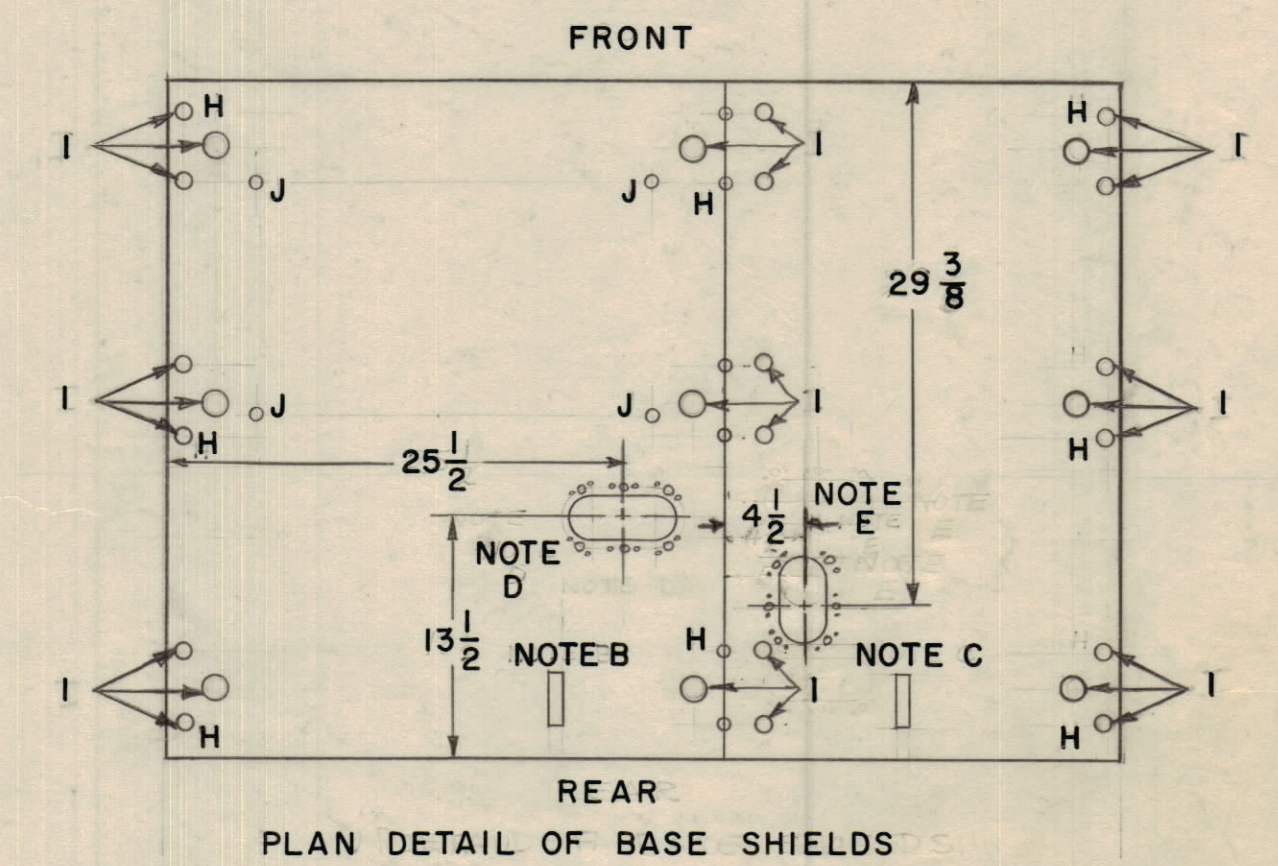
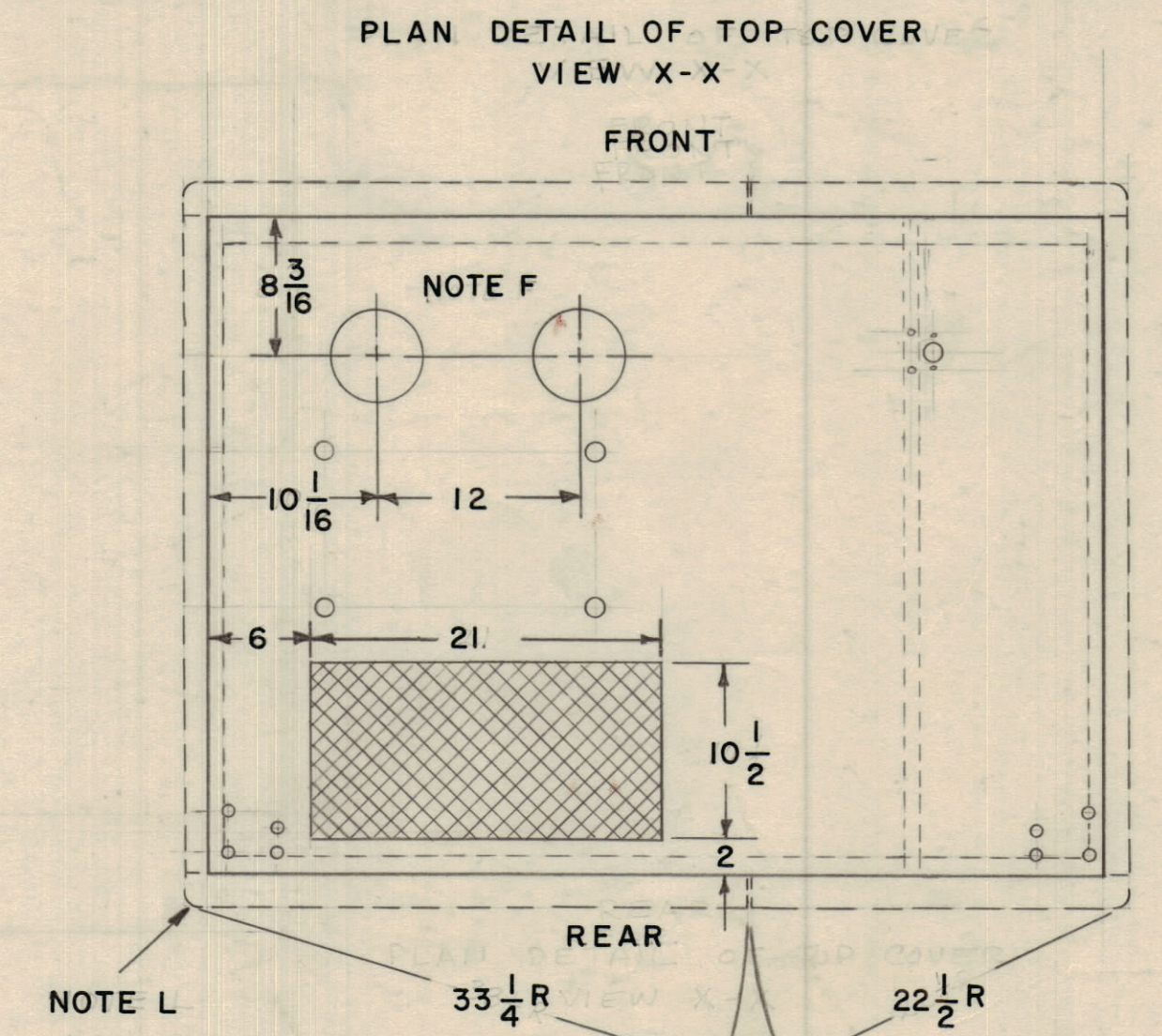


FIGURE 2-2
INSTALLATION DETAILS - RADIO TRANSMITTER MODEL GPT-10K-2
(RADIO TRANSMITTING SET AN/FRT-39)

REVISIONS							
ZONE	LTR	DESCRIPTION	DATE	E.M.N.O.	DRAFT	CHKD	APPD
		ORIGINAL RELEASE FOR PRODUCTION	6/29/68				

INSTALLATION DETAIL - GPT-10K-2			
THE TECHNICAL MATERIEL CORPORATION MAMARONECK, NEW YORK			
DATE 8-17-59	CHKD. J. De	APPD.	4/29/68
DRAWN MJT			
SHEET 02	NO. IN-1097		

Reduce to 47%

IN-1097