

IF IT IS FOUND DESIRABLE TO CHANGE ANY TOLERANCE OR OTHER DETAIL SPECIFIED ON THIS DRAWING NOTIFY THE PURCHASER PROMPTLY.
 MAXIMUM ALLOWABLE TOLERANCES HAVE BEEN DETERMINED AND DEVIATIONS WILL BE CAUSE FOR REJECTION. REMOVE ALL BURRS AND SHARP EDGES.

QDP-3

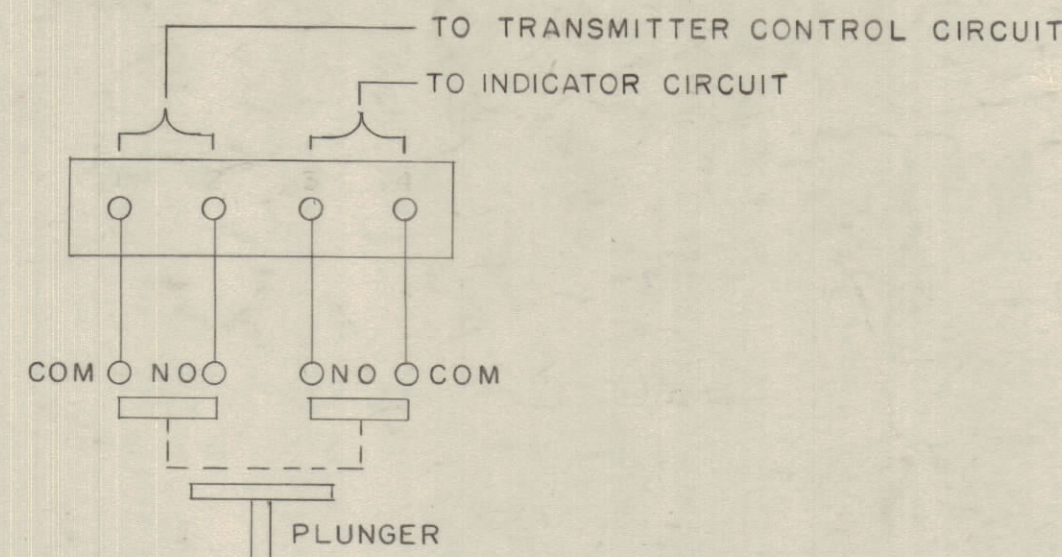
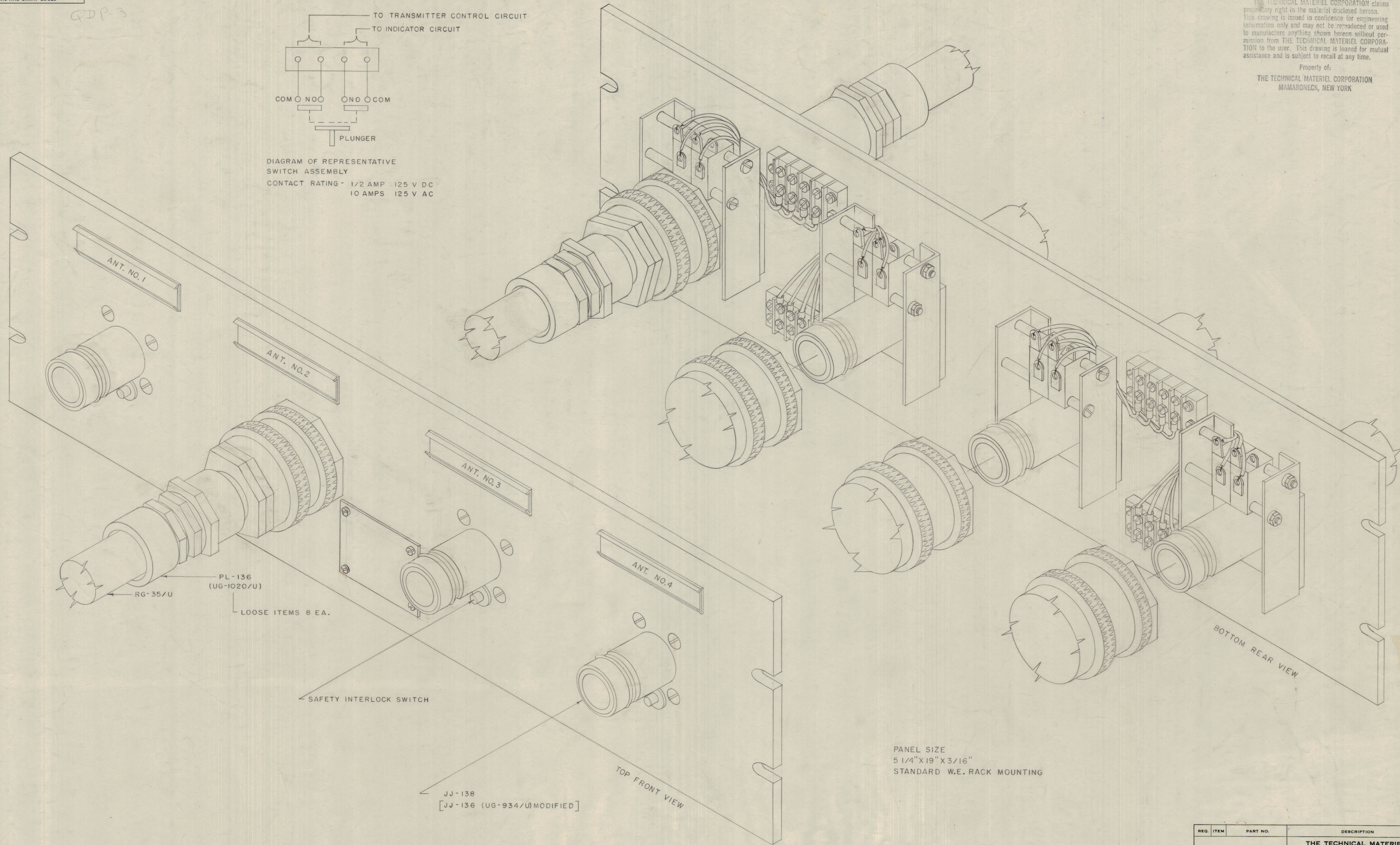


DIAGRAM OF REPRESENTATIVE SWITCH ASSEMBLY
 CONTACT RATING - 1/2 AMP 125 V DC
 10 AMPS 125 V AC



PANEL SIZE
 5 1/4" x 19" x 3/16"
 STANDARD W.E. RACK MOUNTING

NOTICE TO PERSONS RECEIVING THIS DRAWING
 THE TECHNICAL MATERIEL CORPORATION claims proprietary right in the material disclosed hereon. This drawing is issued in confidence for engineering information only and may not be reproduced or used to manufacture anything shown herein without permission from THE TECHNICAL MATERIEL CORPORATION to the user. This drawing is loaned for mutual assistance and is subject to recall at any time.
 Property of:
 THE TECHNICAL MATERIEL CORPORATION
 MAMARONECK, NEW YORK

IN-117

ISSUE	ITEM	CHANGED FROM	DATE	CN. NO.	DRAFTS	CHECKER	ENG. APP.
TOLERANCES <td colspan="6">SCALE: 8A-1350</td>		SCALE: 8A-1350					
ALL OTHERS	DEC. DIM. ± FRAC. DIM. ± ANGULAR DIM. ±	DRILL, PUNCH, COMMERCIAL STOCK SIZES AND MANUFACTURERS TOLERANCES ARE NOT INCLUDED.					

QDP	585		7-27-56
REQ PER UNIT	MODEL	PROJECT NO.	ASSY. NO.
USED ON			

REQ. ITEM	PART NO.	DESCRIPTION	SYMBOL
THE TECHNICAL MATERIEL CORP. MAMARONECK, NEW YORK			
RF PATCHING ASSEMBLY			
MODEL QDP			
CDD		MECH. DES. APP.	
DRAWN		ELEC. DES. APP.	
HEAT TREAT. SPEC.		FINAL APPROVAL	
CHECKED		A.T.J.	
FINISH & SPEC. NO.		IN-117	