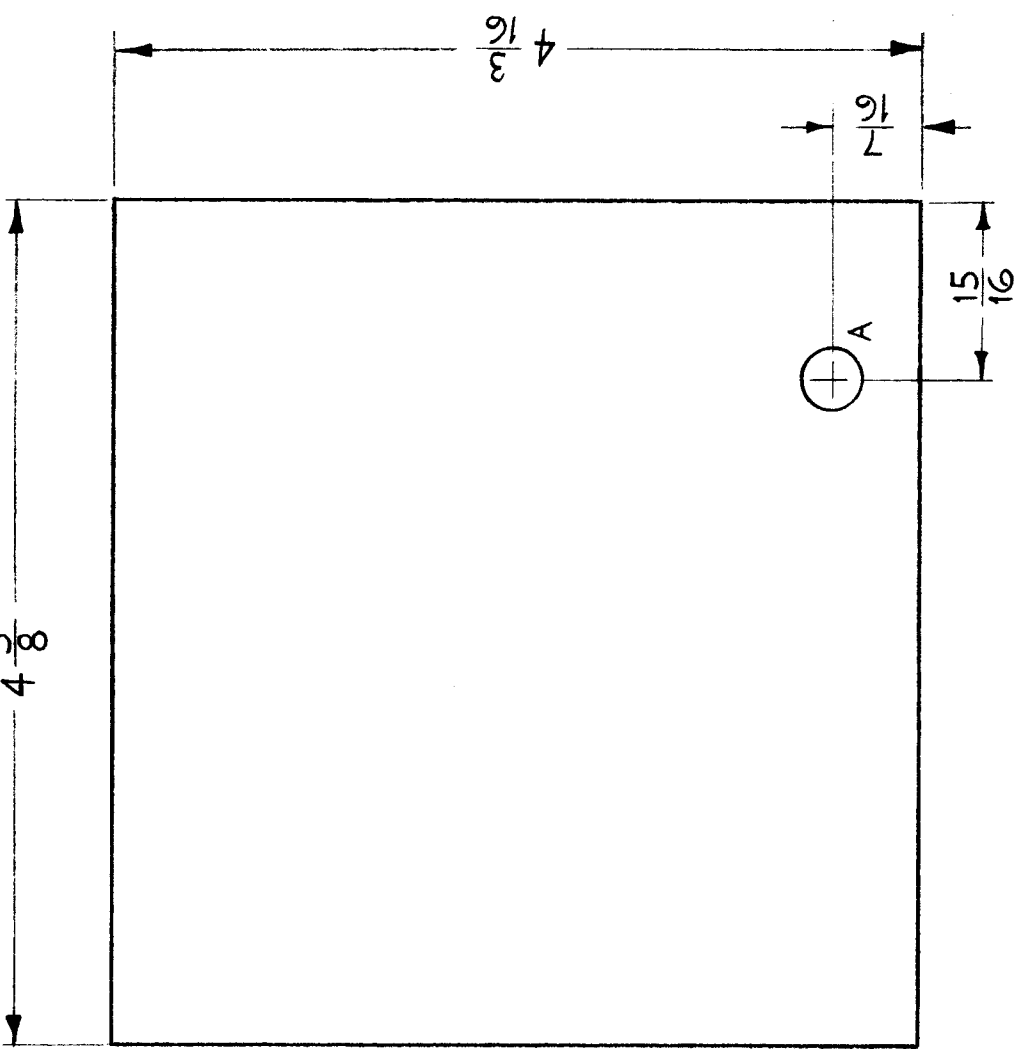


REQ. PER UNIT	1	USED ON	IM-199
MODEL	CHG-2	ASS'Y. NO.	OVEN
DATE	5-18-61		

4 $\frac{3}{8}$

A \sim $\frac{5}{16}$ DIA. 1 REQ.



REQ. ITEM	1/2	PART NO.		DESCRIPTION	THE TECHNICAL MATERIEL CORP. MAMARONECK, NEW YORK	SYMBOL	
STOCK SIZE	CELOTEX				INSULATION, TOP		
MATERIAL							
TYPE & TEMPER							
HEAT TREAT. SPEC.							
FINISH & SPEC. NO.							
TOLERANCES		SCALE: FULL (DO NOT SCALE).		CHECKER		ELEC. DES. APPR.	
DEC. DIM. \pm	\pm 1/64	DATE	CH. NO.	DRAFTS	MAXIMUM ALLOWABLE TOLERANCES HAVE BEEN DETERMINED AND ANY DEVIATIONS WILL BE CAUSE FOR REJECTION. REMOVE ALL BURRS AND SHARP EDGES	APPROVAL	
FRAC. DIM. \pm						IM-199	
ANGULAR DIM. \pm						IM-199	