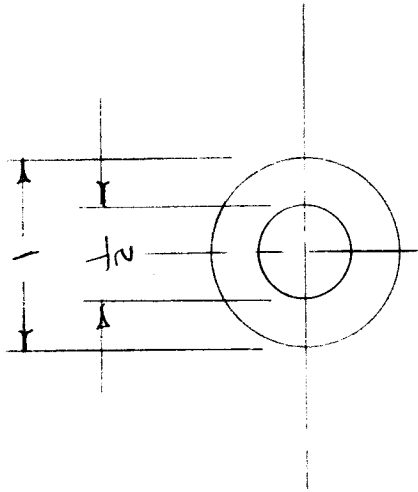


IF IT IS FOUND DESIRABLE TO CHANGE ANY TOLERANCE OR OTHER DETAIL SPECIFIED ON THIS DRAWING NOTIFY THE PURCHASER PROMPTLY.

MAXIMUM ALLOWABLE TOLERANCES HAVE BEEN DETERMINED AND DEVIATIONS WILL BE CAUSE FOR REJECTION. REMOVE ALL BURRS AND SHARP EDGES



IM-155 A

USED ON	
REQ. PER UNIT	PROJECT NO.
2	TR-021
MODEL	DATE
TR-021	1-2-57

ISSUE ITEM	CHANGED FROM	DATE	CN. NO.	DRAFTS CHECKER	ENG. APP.
A	IM-155-2,3 DELETED	7/11/57	1	<i>[Signature]</i>	<i>[Signature]</i>

TOLERANCES  
 DEC. DIM. ±  
 FRAC. DIM. ±  
 OTHERS ANGULAR DIM. ±

SCALE  
 DRILL, PUNCH, COMMERCIAL STOCK SIZES AND MANUFACTURERS TOLERANCES ARE NOT INCLUDED.

REQ. ITEM	PART NO.	DESCRIPTION	SYMBOL
.015		THE TECHNICAL MATERIEL CORP.	
FISH PAPER		MAMARONECK. NEW YORK	
MATERIAL	WEIGHT PER PC.	INSULATOR, TOROIDAL	
		COILS	
TYPE & TEMPER		CDD 7-28-55	<i>[Signature]</i>
HEAT TREAT. SPEC.		DRAWN	ELEC. DES. APP. MECH. DES. APP.
FINISH & SPEC. NO.		CHECKED	
		<i>[Signature]</i>	FINAL APPROVAL
			IM-155 A