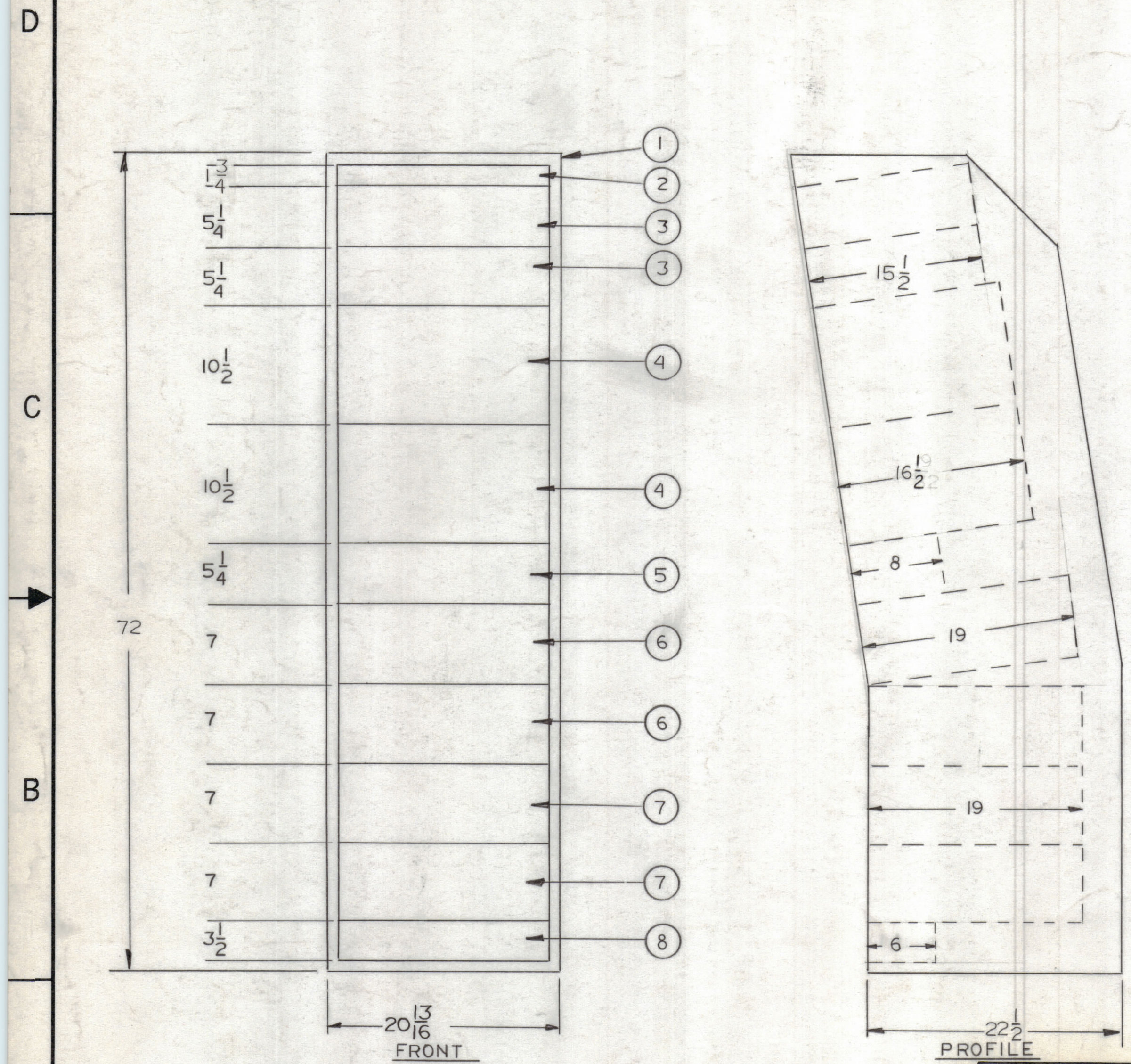


REVISIONS							
ZONE	LTR	DESCRIPTION	DATE	E.M.N.O.	DRAFT	CHKD	APPD
	A	REVISED WEIGHT	1/20/69	WRH	WRH		

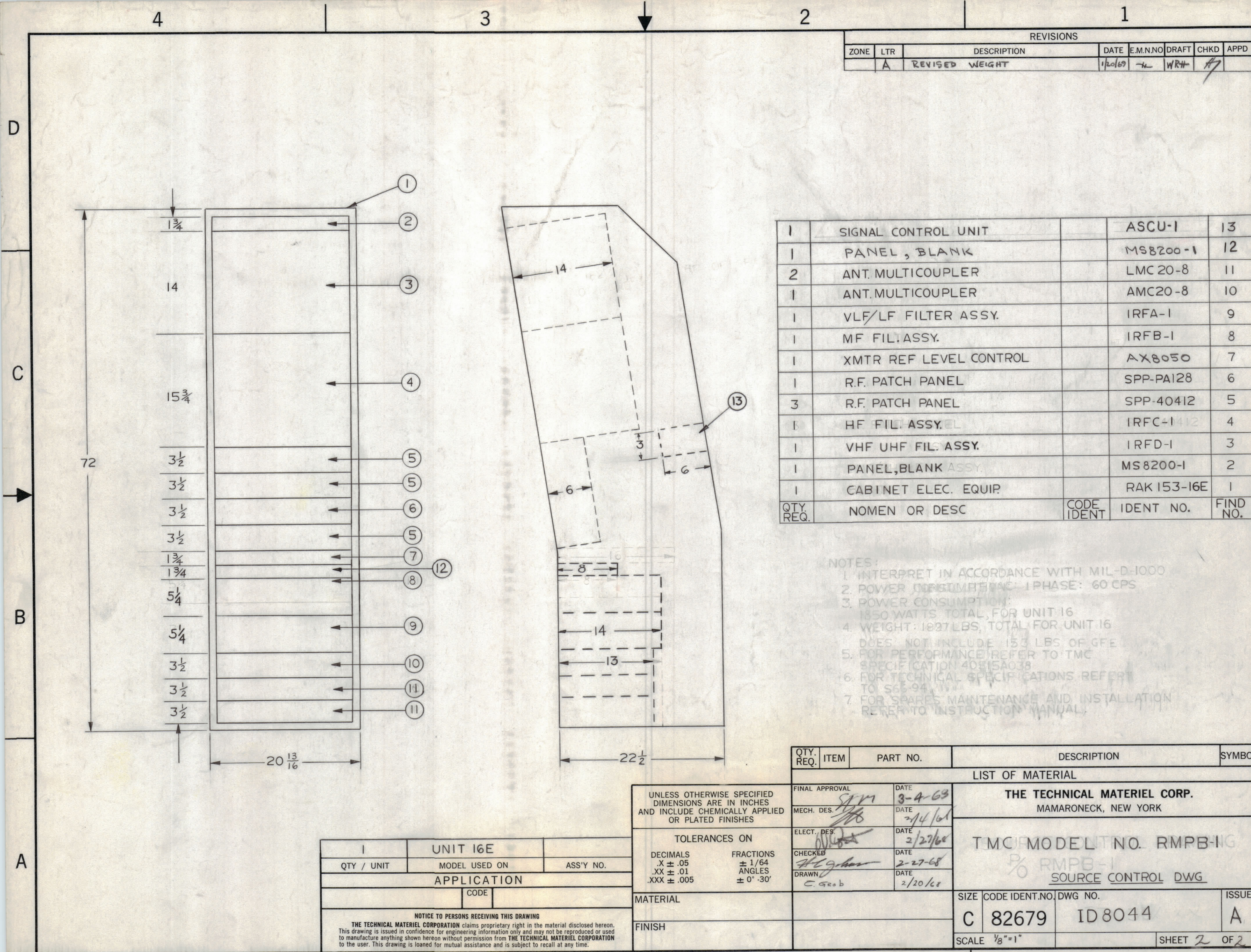
- NOTES:
1. INTERPRET IN ACCORDANCE WITH MIL-D-1000
 2. INPUT POWER: 115V AC; 1PHASE; 60CPS.
 3. POWER CONSUMPTION 1850 WATTS, TOTAL UNIT 16
 4. WEIGHT: 788 LBS. TOTAL
DOES NOT INCLUDE 153 LBS OF GFE
 5. FOR PERFORMANCE, REFER TO TMC SPECIFICATION 40SI6A063
 6. FOR TECHNICAL SPECIFICATIONS, REFER TO S66-94
 7. FOR SPARES, MAINTENANCE AND INSTALLATION REFER TO INSTRUCTION MANUAL.



QTY REQD	NOMEN OR DESC	CODE IDENT	IDENT. NO.	FIND NO.
				9
1	AC AUX. PNL.		APP-16	8
2	VLF RCVR.		VLRC-1	7
2	MF RCVR.		VLRB-1	6
1	WING TIP REM. CONT.		AX8048	5
2	HF RCVR.	G.F.E.	R390A/URR	4
2	UHF RCVR.	14632	RS III-IB	3
1	PANEL, BLANK		MS8200-1	2
1	CABINET, ELECT. EQUIP		RAK153-16D	1

QTY. REQ.	ITEM	PART NO.	DESCRIPTION	SYMBOL
LIST OF MATERIAL				
THE TECHNICAL MATERIEL CORP. MAMARONECK, NEW YORK TMC MODEL NO. RMPB-ING P/O RMPB-1 SOURCE CONTROL DWG				
FINAL APPROVAL		DATE	3-7-68	
MECH. DES.		DATE	2/14/68	
ELECT. DES.		DATE	2-27-68	
CHECKED		DATE	2-27-68	
DRAWN		DATE	2-26-68	
MATERIAL			SIZE	ISSUE
FINISH			C 82679	A
			CODE IDENT. NO.	DWG NO.
			82679	ID8044
			SCALE 1/8" = 1"	SHEET 1 OF 2

QTY / UNIT	MODEL USED ON	ASS'Y NO.
1	UNIT 16D	
APPLICATION		
CODE		
NOTICE TO PERSONS RECEIVING THIS DRAWING THE TECHNICAL MATERIEL CORPORATION claims proprietary right in the material disclosed hereon. This drawing is issued in confidence for engineering information only and may not be reproduced or used to manufacture anything shown hereon without permission from THE TECHNICAL MATERIEL CORPORATION to the user. This drawing is loaned for mutual assistance and is subject to recall at any time.		



REVISIONS							
ZONE	LTR	DESCRIPTION	DATE	E.M.N. NO.	DRAFT	CHKD	APPD
A		REVISED WEIGHT	12/69	WRH			

QTY. REQ.	NOMEN OR DESC	CODE IDENT	IDENT NO.	FIND NO.
1	SIGNAL CONTROL UNIT		ASCU-1	13
1	PANEL, BLANK		MS8200-1	12
2	ANT. MULTICOUPLER		LMC 20-8	11
1	ANT. MULTICOUPLER		AMC20-8	10
1	VLF/LF FILTER ASSY.		IRFA-1	9
1	MF FIL. ASSY.		IRFB-1	8
1	XMTR REF LEVEL CONTROL		AX8050	7
1	R.F. PATCH PANEL		SPP-PA128	6
3	R.F. PATCH PANEL		SPP-40412	5
1	HF FIL. ASSY.		IRFC-1112	4
1	VHF UHF FIL. ASSY.		IRFD-1	3
1	PANEL, BLANK ASSY.		MS8200-1	2
1	CABINET ELEC. EQUIP.		RAK 153-16E	1

NOTES:
 1. INTERPRET IN ACCORDANCE WITH MIL-D-1000
 2. POWER INPUT: 1PHASE: 60 CPS
 3. POWER CONSUMPTION:
 1850 WATTS TOTAL, FOR UNIT 16
 4. WEIGHT: 1827 LBS, TOTAL FOR UNIT 16
 DOES NOT INCLUDE 153 LBS OF GFE
 5. FOR PERFORMANCE REFER TO TMC SPECIFICATION 40815A038
 6. FOR TECHNICAL SPECIFICATIONS REFER TO S65-94
 7. FOR SPARES MAINTENANCE AND INSTALLATION REFER TO INSTRUCTION MANUAL

1	UNIT 16E	
QTY / UNIT	MODEL USED ON	ASS'Y NO.
APPLICATION		
CODE		
NOTICE TO PERSONS RECEIVING THIS DRAWING THE TECHNICAL MATERIEL CORPORATION claims proprietary right in the material disclosed hereon. This drawing is issued in confidence for engineering information only and may not be reproduced or used to manufacture anything shown hereon without permission from THE TECHNICAL MATERIEL CORPORATION to the user. This drawing is loaned for mutual assistance and is subject to recall at any time.		

UNLESS OTHERWISE SPECIFIED DIMENSIONS ARE IN INCHES AND INCLUDE CHEMICALLY APPLIED OR PLATED FINISHES	
TOLERANCES ON	
DECIMALS	FRACTIONS
.X ± .05	± 1/64
.XX ± .01	ANGLES
.XXX ± .005	± 0° -30'
FINAL APPROVAL	DATE 3-4-69
MECH. DES.	DATE 2-14-68
ELECT. DES.	DATE 2/27/68
CHECKED	DATE 2-27-68
DRAWN	DATE 2/20/68

QTY. REQ.	ITEM	PART NO.	DESCRIPTION	SYMBOL
LIST OF MATERIAL				
THE TECHNICAL MATERIEL CORP. MAMARONECK, NEW YORK				
TMC MODEL NO. RMPB-11G RMPB-1 SOURCE CONTROL DWG				
SIZE	CODE IDENT. NO.	DWG NO.	ISSUE	
C	82679	ID8044	A	
SCALE 1/8"=1"			SHEET 2 OF 2	