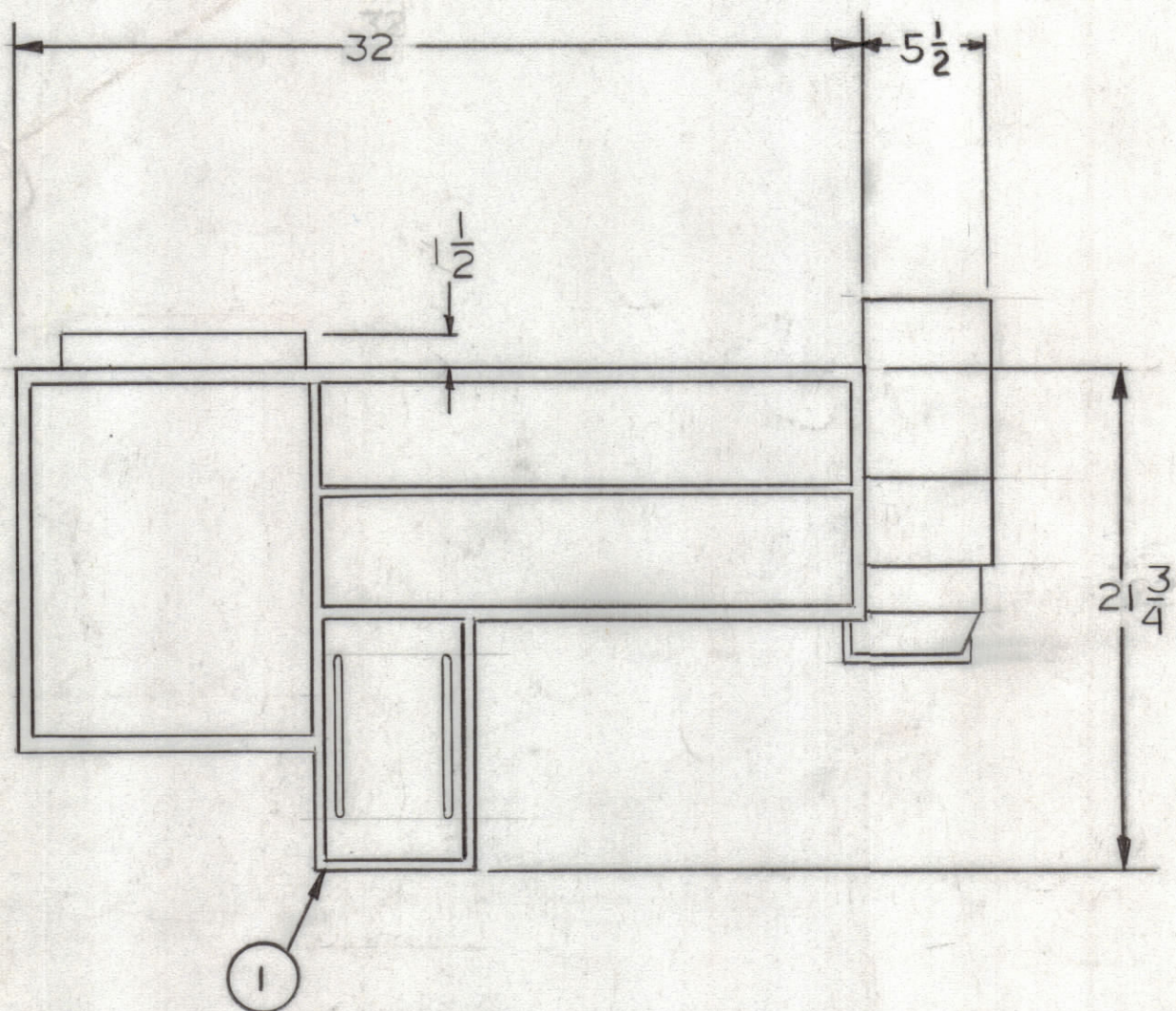


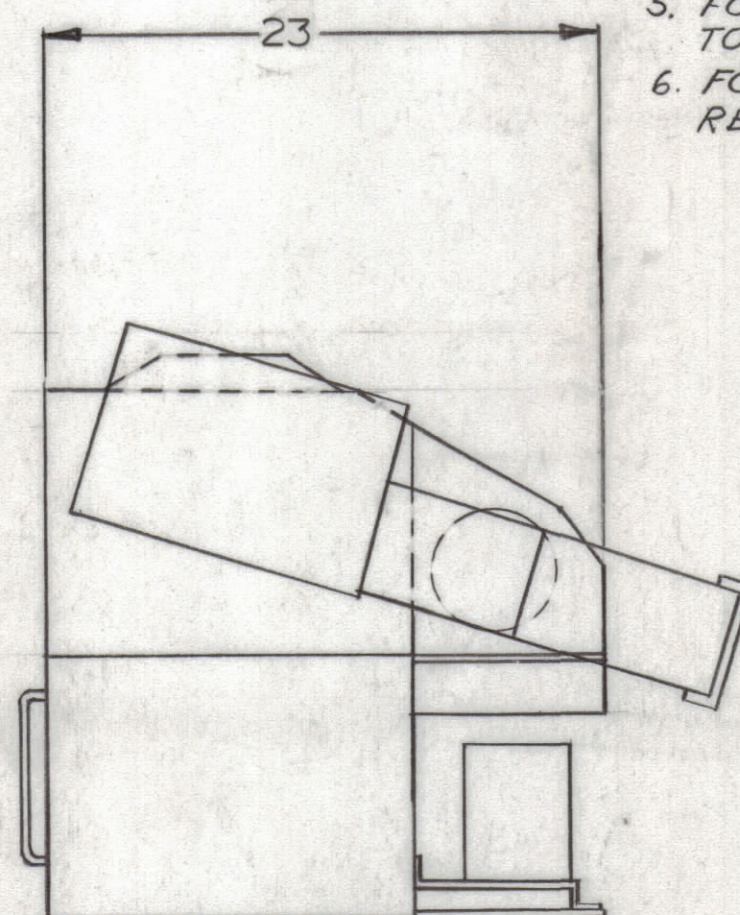
REVISIONS						
ZONE	LTR	DESCRIPTION	DATE	E.M.N.NO	DRAFT	CHKD APPD

NOTES:

1. INTERPRET IN ACCORDANCE WITH MIL-D-1000
2. POWER INPUT 115V AC, 1 PHASE, 60 CPS.
3. WEIGHT 141 LBS EA.
4. FOR PERFORMANCE, REFER TO TMC SPECIFICATION 4059 A062
5. FOR TECHNICAL SPECIFICATIONS, REFER TO 566-94
6. FOR SPARES, MAINTENANCE AND INSTALLATION REFER TO INSTRUCTION MANUAL



FRONT



PROFILE

2	ANT. TUNING SYSTEM		ATS-4A	I
QTY. REQ.	NOMEN. OR DESC.	CODE IDENT	IDENT NO.	FIND NO.

QTY. REQ.	ITEM	PART NO.	DESCRIPTION	SYMBOL
LIST OF MATERIAL				
FINAL APPROVAL		DATE	THE TECHNICAL MATERIEL CORP. MAMARONECK, NEW YORK STMC MODEL NO. ATS-4A SOURCE CONTROL DWG.	
MECH. DES.		DATE		
ELECT. DES.		DATE		
CHECKED		DATE		
DRAWN		DATE	SIZE CODE IDENT. NO. DWG NO. ISSUE C 82679 ID 8042 /	
			SCALE 1/8" = 1"	SHEET 1 OF 3

1 / 9	ATS-4A, B	
QTY / UNIT	MODEL USED ON	ASS'Y NO.
APPLICATION		
CODE		

NOTICE TO PERSONS RECEIVING THIS DRAWING
 THE TECHNICAL MATERIEL CORPORATION claims proprietary right in the material disclosed hereon. This drawing is issued in confidence for engineering information only and may not be reproduced or used to manufacture anything shown hereon without permission from THE TECHNICAL MATERIEL CORPORATION to the user. This drawing is loaned for mutual assistance and is subject to recall at any time.

UNLESS OTHERWISE SPECIFIED DIMENSIONS ARE IN INCHES AND INCLUDE CHEMICALLY APPLIED OR PLATED FINISHES

TOLERANCES ON	
DECIMALS	FRACTIONS
.X ± .05	± 1/64
.XX ± .01	ANGLES
.XXX ± .005	± 0° -30'

MATERIAL	
FINISH	

4

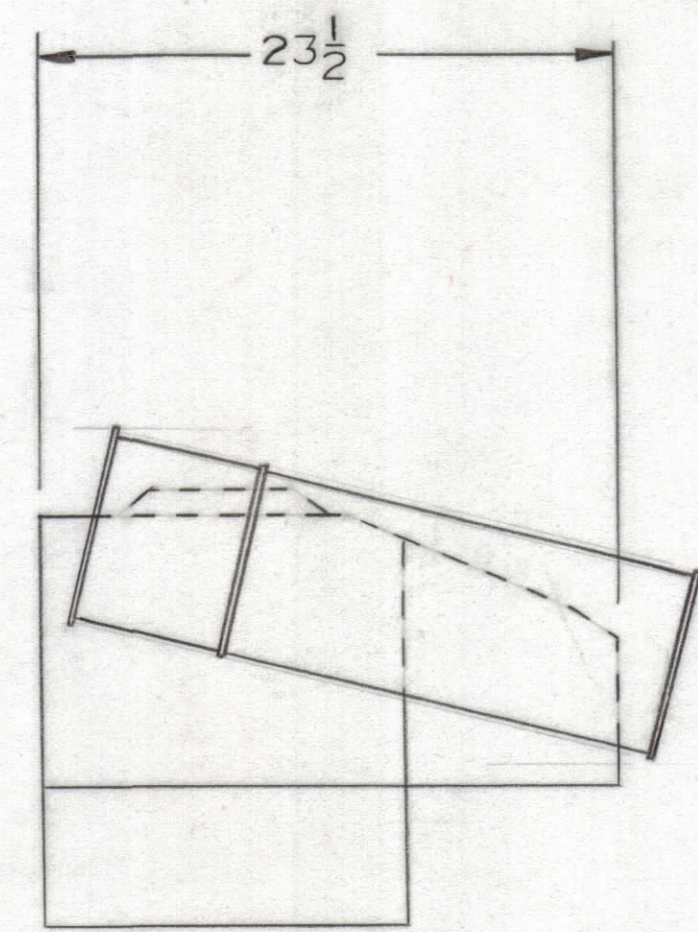
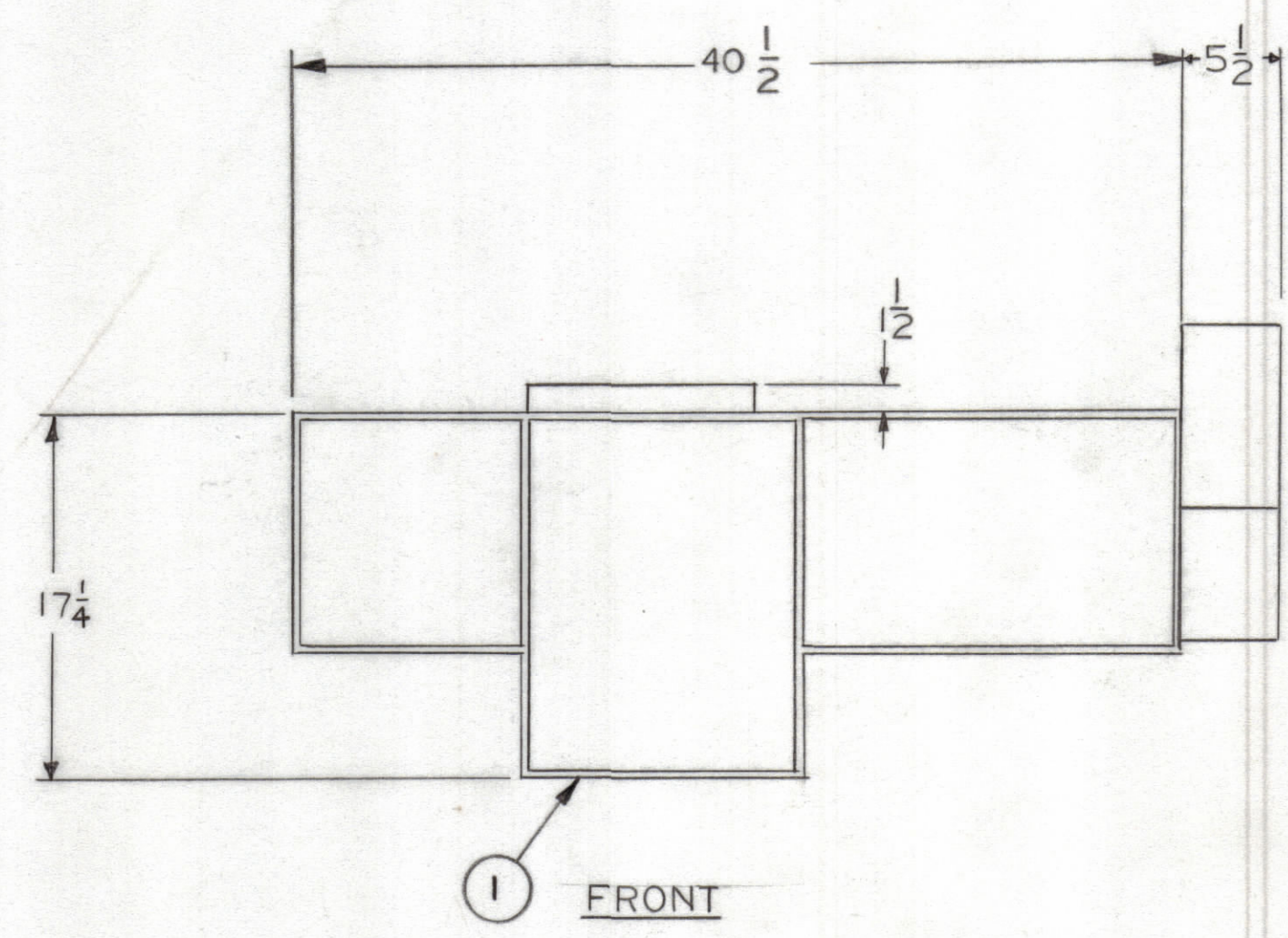
3

2

1

REVISIONS						
ZONE	LTR	DESCRIPTION	DATE	E.M.N.NO	DRAFT	CHKD APPD

NOTES:
 1. INTERPRET IN ACCORDANCE WITH MIL-D-1000
 2. UNLESS OTHERWISE SPECIFIED, ALL DIMENSIONS ARE IN INCHES
 3. UNLESS OTHERWISE SPECIFIED, ALL DIMENSIONS ARE TO CENTER UNLESS OTHERWISE SPECIFIED



2	ANT. TUNING SYSTEM		ATS-4 D,B	I
QTY REQD	NOMEN OR DESC.	CODE IDENT.	IDENT NO.	FIND NO.

QTY. REQ.	ITEM	PART NO.	DESCRIPTION	SYMBOL
LIST OF MATERIAL				
THE TECHNICAL MATERIEL CORP. MAMARONECK, NEW YORK				
STMC MODEL NO. ATS-4/ING ATS-4 DEB SOURCE CONTROL DWG				
SIZE	CODE	IDENT. NO.	DWG NO.	ISSUE
C		82679	ID 8042	∅
SCALE 1/8"=1"			SHEET 2 OF 3	

UNLESS OTHERWISE SPECIFIED DIMENSIONS ARE IN INCHES AND INCLUDE CHEMICALLY APPLIED OR PLATED FINISHES

TOLERANCES ON
 DECIMALS .X ± .05
 .XX ± .01
 .XXX ± .005
 FRACTIONS ± 1/64
 ANGLES ± 0° -30'

2 / 9	ATS-4-DEB	
QTY / UNIT	MODEL USED ON	ASS'Y NO.
APPLICATION		
	CODE	

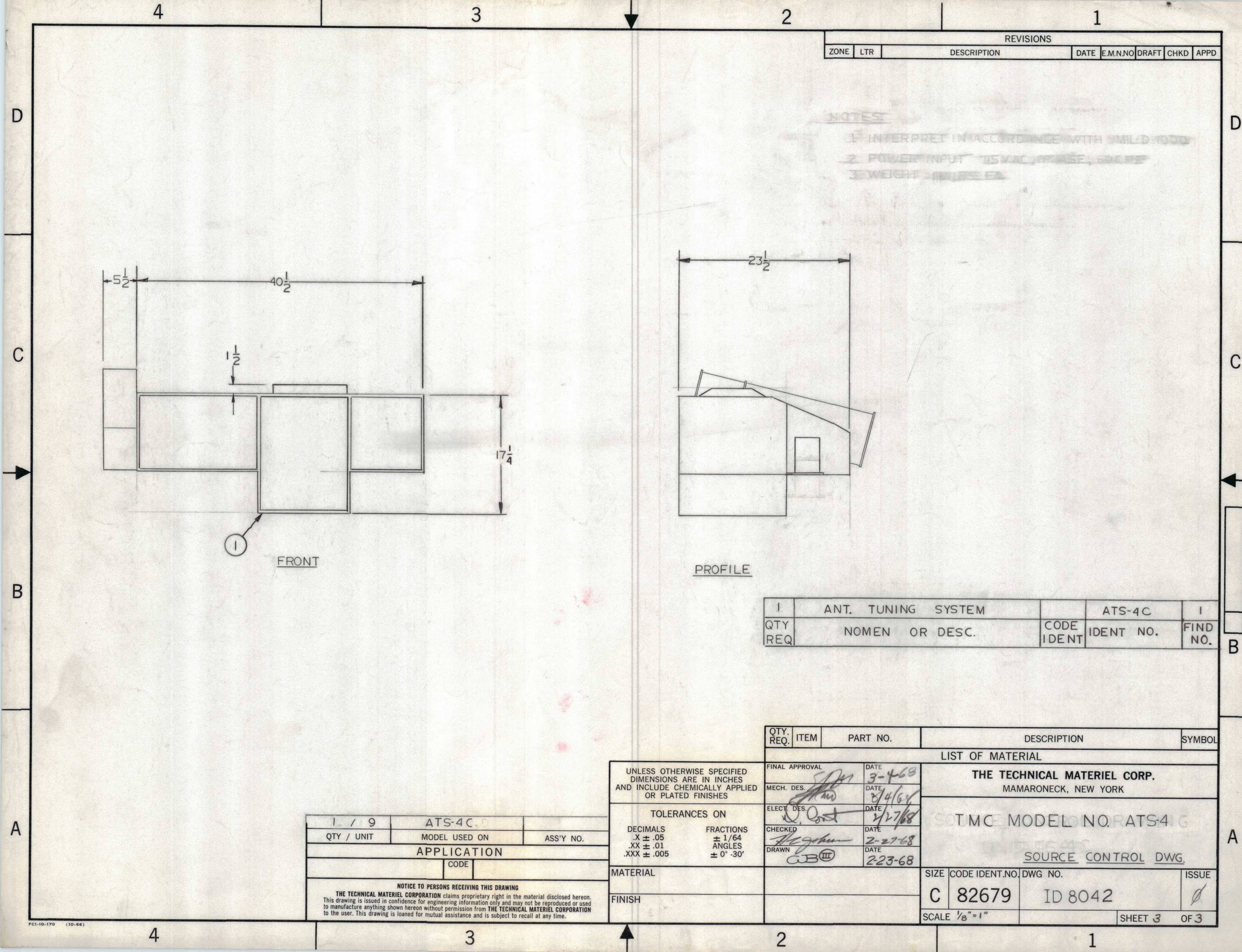
NOTICE TO PERSONS RECEIVING THIS DRAWING
 THE TECHNICAL MATERIEL CORPORATION claims proprietary right in the material disclosed hereon. This drawing is issued in confidence for engineering information only and may not be reproduced or used to manufacture anything shown hereon without permission from THE TECHNICAL MATERIEL CORPORATION to the user. This drawing is loaned for mutual assistance and is subject to recall at any time.

4

3

2

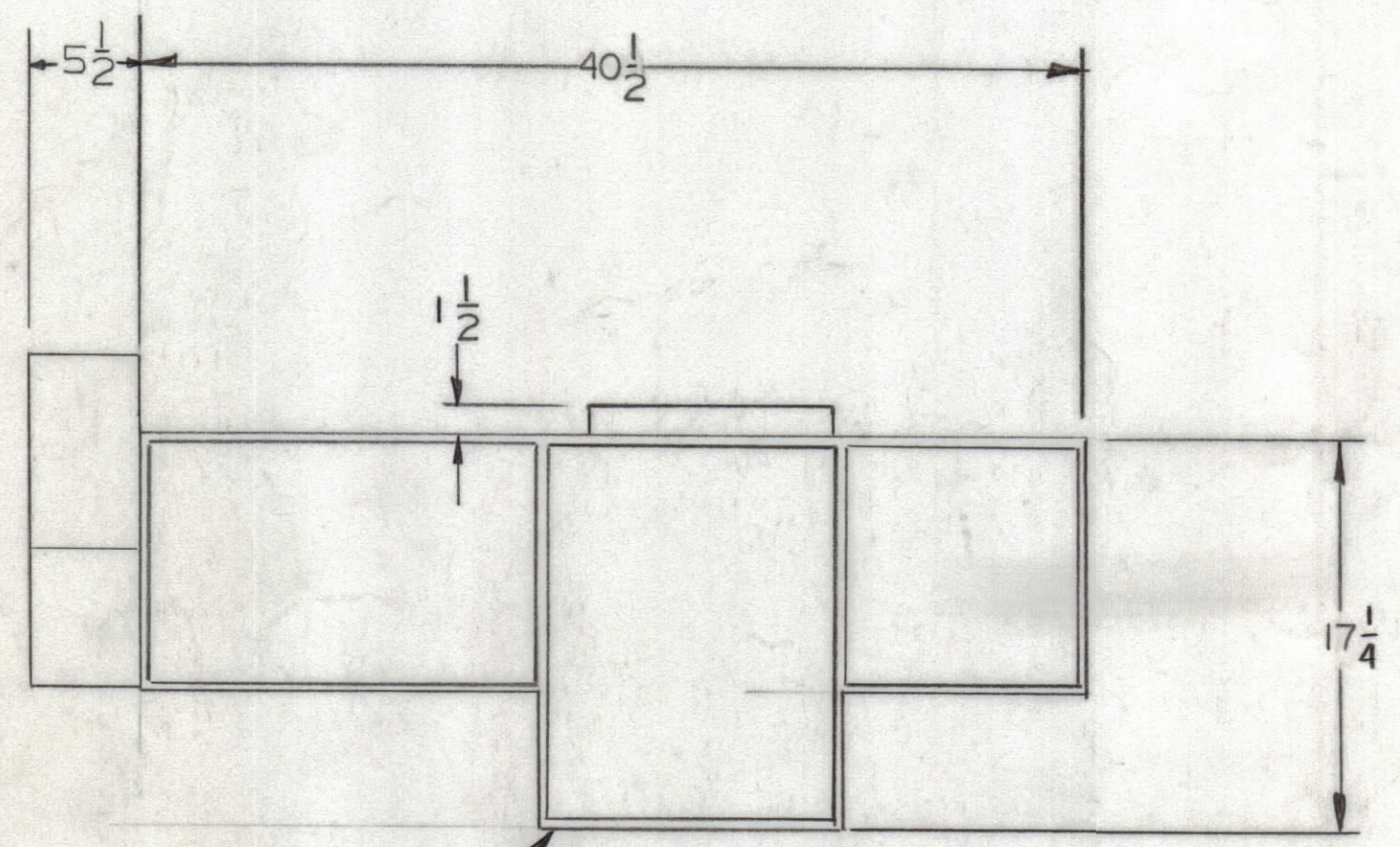
1



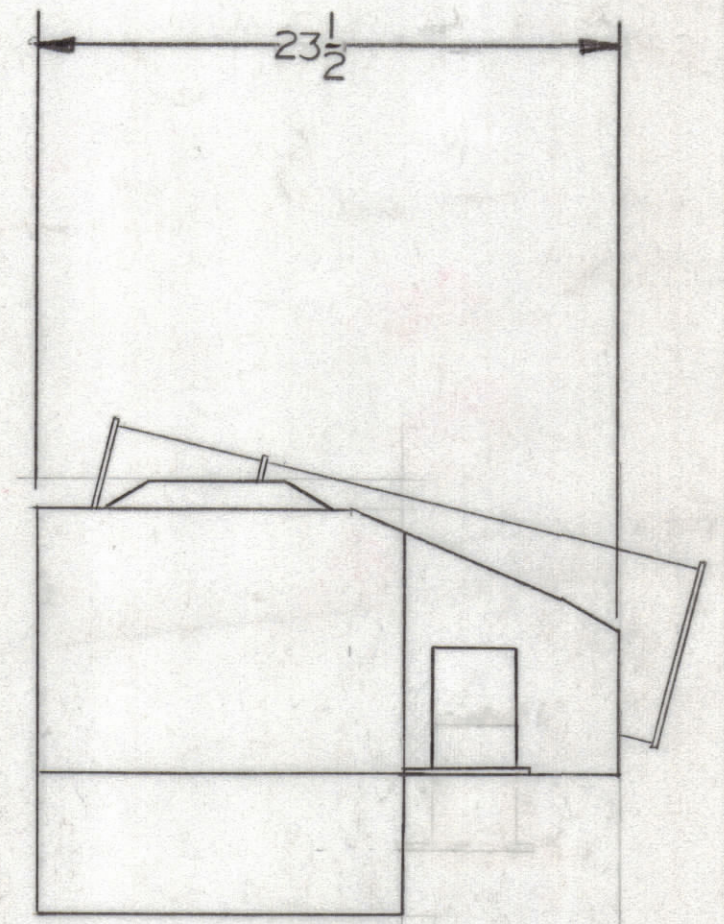
REVISIONS						
ZONE	LTR	DESCRIPTION	DATE	E.M.N.NO	DRAFT	CHKD APPD

NOTES

1. INTERPRET IN ACCORDANCE WITH MIL-D-1000
2. POWER INPUT 15VAC PHASE, 60HZ
3. WEIGHT 3.15 LBS EA.



FRONT



PROFILE

1	ANT. TUNING SYSTEM		ATS-4C	1
QTY REQ	NOMEN OR DESC.	CODE IDENT	IDENT NO.	FIND NO.

QTY. REQ.	ITEM	PART NO.	DESCRIPTION	SYMBOL
LIST OF MATERIAL				
THE TECHNICAL MATERIEL CORP. MAMARONECK, NEW YORK				
SOTMCE MODEL NO. RATS-4 G				
SOURCE CONTROL DWG.				
SIZE	CODE IDENT. NO.	DWG NO.	ISSUE	
C	82679	ID 8042	/	
SCALE 1/8" = 1"			SHEET 3	OF 3

UNLESS OTHERWISE SPECIFIED DIMENSIONS ARE IN INCHES AND INCLUDE CHEMICALLY APPLIED OR PLATED FINISHES		FINAL APPROVAL	DATE
TOLERANCES ON		<i>[Signature]</i>	3-4-68
DECIMALS	FRACTIONS	MECH. DES.	DATE
.X ± .05	± 1/64	<i>[Signature]</i>	3/4/68
.XX ± .01	ANGLES	ELECT. DES.	DATE
.XXX ± .005	± 0° - 30'	<i>[Signature]</i>	2/27/68
MATERIAL		CHECKED	DATE
FINISH		<i>[Signature]</i>	2-27-68
		DRAWN	DATE
		<i>[Signature]</i>	2-23-68

1 / 9	ATS-4C	
QTY / UNIT	MODEL USED ON	ASS'Y NO.
APPLICATION		
CODE		

NOTICE TO PERSONS RECEIVING THIS DRAWING
 THE TECHNICAL MATERIEL CORPORATION claims proprietary right in the material disclosed hereon. This drawing is issued in confidence for engineering information only and may not be reproduced or used to manufacture anything shown hereon without permission from THE TECHNICAL MATERIEL CORPORATION to the user. This drawing is loaned for mutual assistance and is subject to recall at any time.