

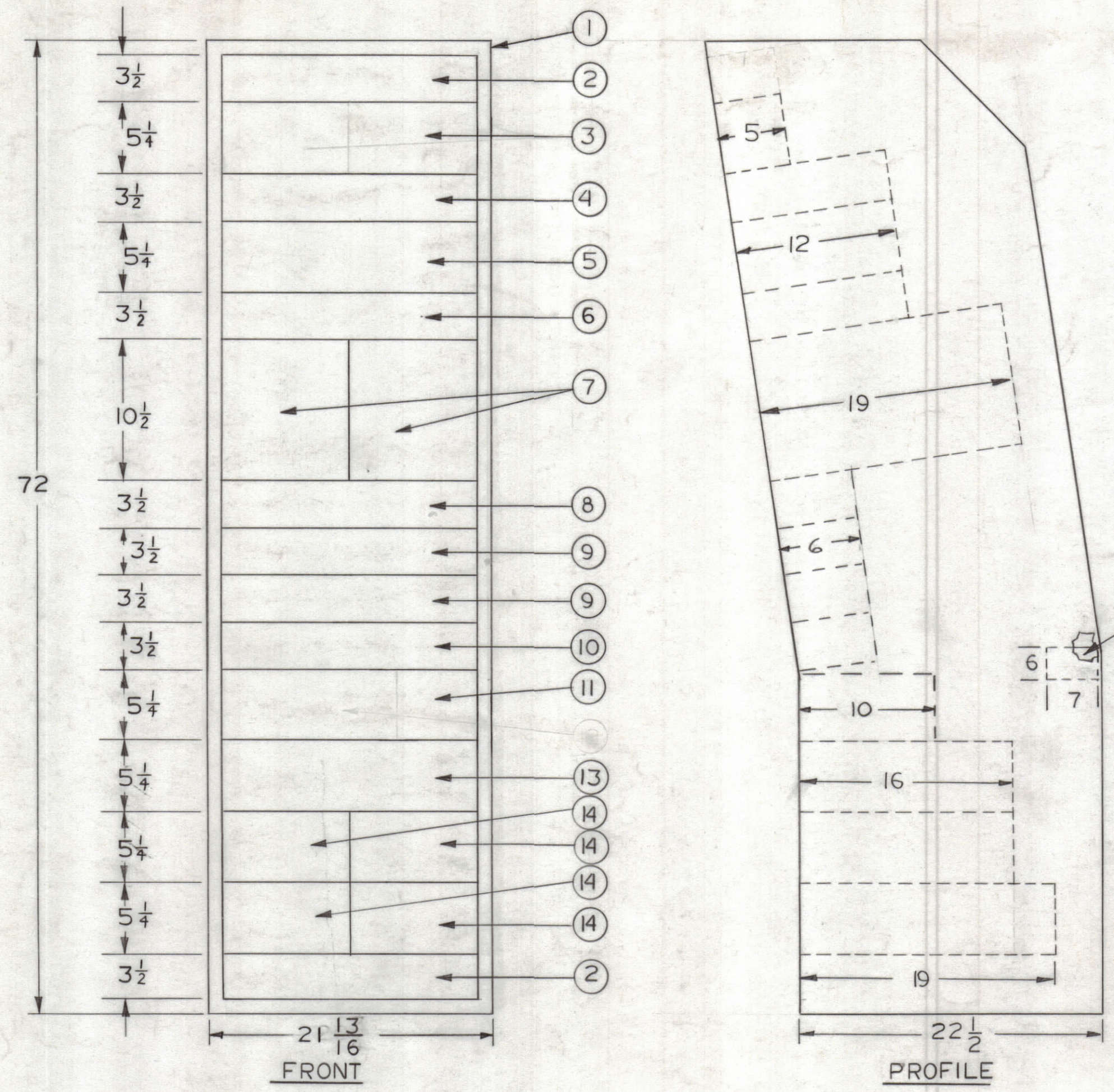
4

3

2

1

| REVISIONS | | | | | | |
|-----------|-----|-------------|------|----------|-------|-----------|
| ZONE | LTR | DESCRIPTION | DATE | E.M.N.NO | DRAFT | CHKD APPD |
| | | | | | | |



- NOTES:
1. INTERPRET IN ACCORDANCE WITH MIL-D-1000
 2. POWER INPUT: 115VAC, 1PHASE, 50/60CPS.
 3. POWER CONSUMPTION: 1250 WATTS TOTAL FOR UNIT 19
 4. WEIGHT: 977 LBS. TOTAL FOR UNIT 19
 5. FOR PERFORMANCE, REFER TO TMC SPECIFICATION 40S19A059
 6. FOR TECHNICAL SPECIFICATIONS, REFER TO S66-94
 7. FOR SPARES, MAINTENANCE AND INSTALLATION REFER TO INSTRUCTION MANUAL

| QTY REQ | NOMEN. OR DESC. | CODE IDENT | IDENT. NO. | FIND NO |
|---------|------------------------|------------|------------|---------|
| | | | | 20 |
| | | | | 19 |
| | | | | 18 |
| | | | | 17 |
| | | | | 16 |
| 1 | PROJ. IMP. MATCHING | | AX8046 | 15 |
| 4 | CAMERA PROCESSING AMPS | 49675 | P/O TK22 | 14 |
| 1 | PULSE DIST. AMP. | 49675 | TA34 | 13 |
| | | | | 12 |
| 1 | STUD. REM. CONT. | | AX8005 | 11 |
| 1 | SLIDE PROJ. R.C. | | P/O AV1072 | 10 |
| 2 | FILM PROJ. R.C. | | P/O AV1071 | 9 |
| 1 | TR4 R.C. | | P/O AV1051 | 8 |
| 2 | MONITOR | 49675 | CUE-8 | 7 |
| 1 | SPG. STD. SEL. SW. | | AX8044 | 6 |
| 1 | SYNC GEN. | K0690 | WG-81/R | 5 |
| 1 | | 96079 | 3519A | 4 |
| 1 | DUAL SPKR. | | LSP-6 | 3 |
| 2 | PANEL, BLANK | | MS8200-2 | 2 |
| 1 | CABINET, ELECT. EQUIP. | | RAK153-19A | 1 |

| | | |
|-------------|---------------|-----------|
| 1 | UNIT 19A | |
| QTY / UNIT | MODEL USED ON | ASS'Y NO. |
| APPLICATION | | |
| | CODE | |

NOTICE TO PERSONS RECEIVING THIS DRAWING
 THE TECHNICAL MATERIEL CORPORATION claims proprietary right in the material disclosed hereon. This drawing is issued in confidence for engineering information only and may not be reproduced or used to manufacture anything shown hereon without permission from THE TECHNICAL MATERIEL CORPORATION to the user. This drawing is loaned for mutual assistance and is subject to recall at any time.

UNLESS OTHERWISE SPECIFIED DIMENSIONS ARE IN INCHES AND INCLUDE CHEMICALLY APPLIED OR PLATED FINISHES

TOLERANCES ON
 DECIMALS .X ± .05
 .XX ± .01
 .XXX ± .005
 FRACTIONS ± 1/64
 ANGLES ± 0° -30'

| QTY. REQ. | ITEM | PART NO. | DESCRIPTION | SYMBOL |
|---|-----------------|----------|--------------|--------|
| LIST OF MATERIAL | | | | |
| FINAL APPROVAL <i>[Signature]</i> DATE 3-6-68 | | | | |
| MECH. DES. <i>[Signature]</i> DATE 2/2/68 | | | | |
| ELECT. DES. <i>[Signature]</i> DATE 3/1/68 | | | | |
| CHECKED <i>[Signature]</i> DATE 3-1-68 | | | | |
| DRAWN <i>[Signature]</i> DATE 2/28/68 | | | | |
| THE TECHNICAL MATERIEL CORP. MAMARONECK, NEW YORK | | | | |
| SOTMCE MODEL NO. AVMC-21G P/O AVMC-2 SOURCE CONTROL DWG | | | | |
| SIZE | CODE IDENT. NO. | DWG NO. | ISSUE | |
| C | 82679 | ID8034 | Ø | |
| SCALE 1/8" = 1" | | | SHEET 1 OF 3 | |

4

3

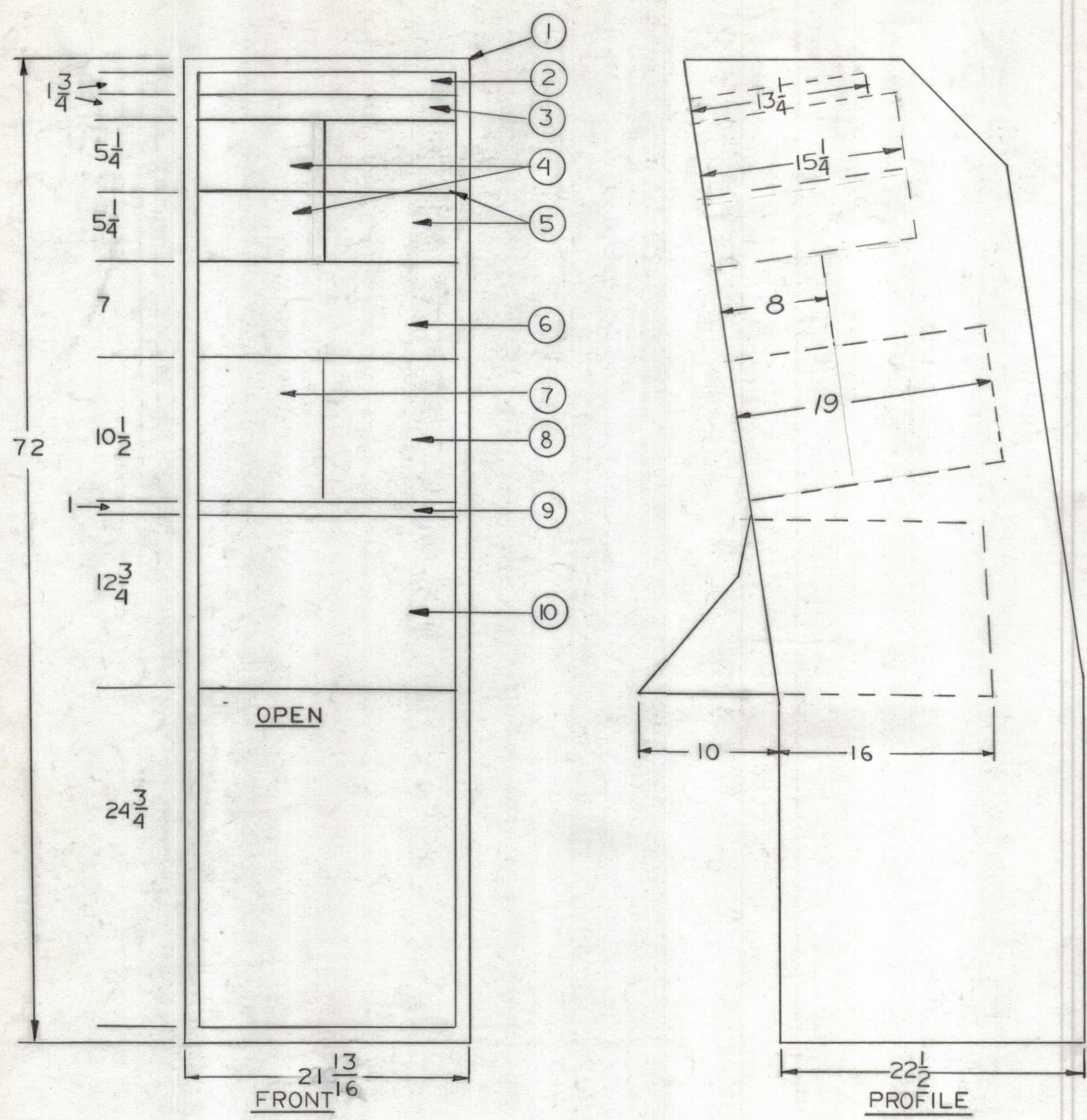
2

1

| REVISIONS | | | | | | |
|-----------|-----|-------------|------|----------|-------|-----------|
| ZONE | LTR | DESCRIPTION | DATE | E.M.N.NO | DRAFT | CHKD APPD |

NOTES:
 1. INTERPRET IN ACCORDANCE WITH MIL-D-1000
 2. POWER INPUT 15VAC, 1PHASE, 50/60 CPS
 3. POWER CONSUMPTION 1250 WATTS TOTAL FOR UNIT 19
 4. WEIGHT 977 LBS. TOTAL FOR UNIT 19

| QTY REQD | NOMEN OR DESC. | CODE IDENT | IDENT NO. | FIND NO. |
|----------|-----------------------|------------|---------------|----------|
| 1 | CONTROL CONSOLE | | AV-1017 | 10 |
| 1 | PANEL, BLANK | | | 9 |
| 1 | MONITOR | 49675 | CUE-8 | 8 |
| 1 | WAVE FORM MONITOR | 49675 | TO 4 | 7 |
| 1 | PAN-TILT-ZOOM R.C. | 49675 | PTI500-TV16CU | 6 |
| 2 | PANEL, BLANK | | | 5 |
| 2 | PROC. AMP | 36123 | 2080C93A | 4 |
| 1 | JACK PANEL | | AJP-6 | 3 |
| 1 | PANEL, BLANK | | MS 8200-2 | 2 |
| 1 | CABINET, ELECT EQUIP. | | RAK153-19B | 1 |



| QTY / UNIT | 19B | ASS'Y NO. |
|-------------|---------------|-----------|
| | MODEL USED ON | |
| APPLICATION | | |
| | CODE | |

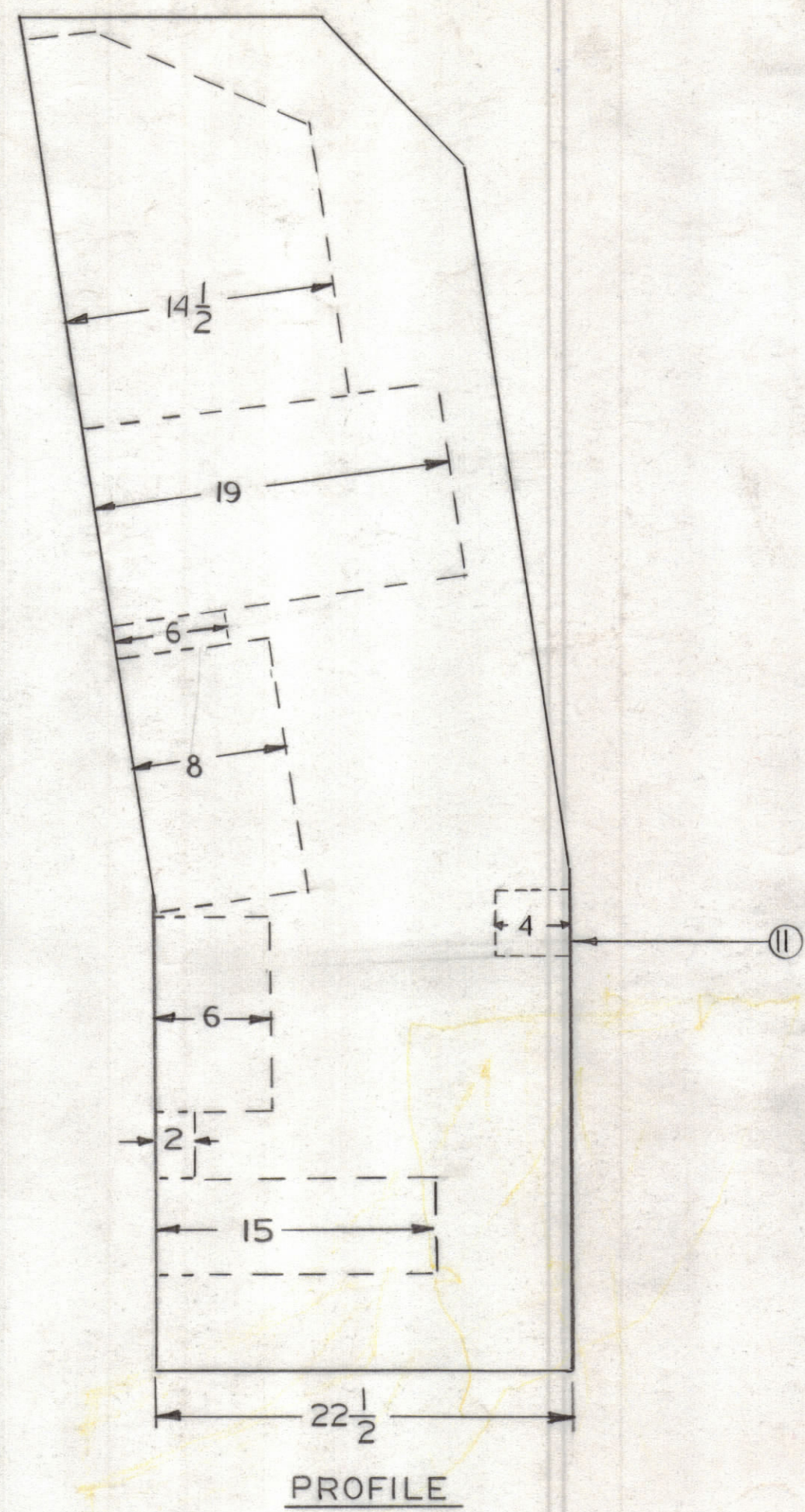
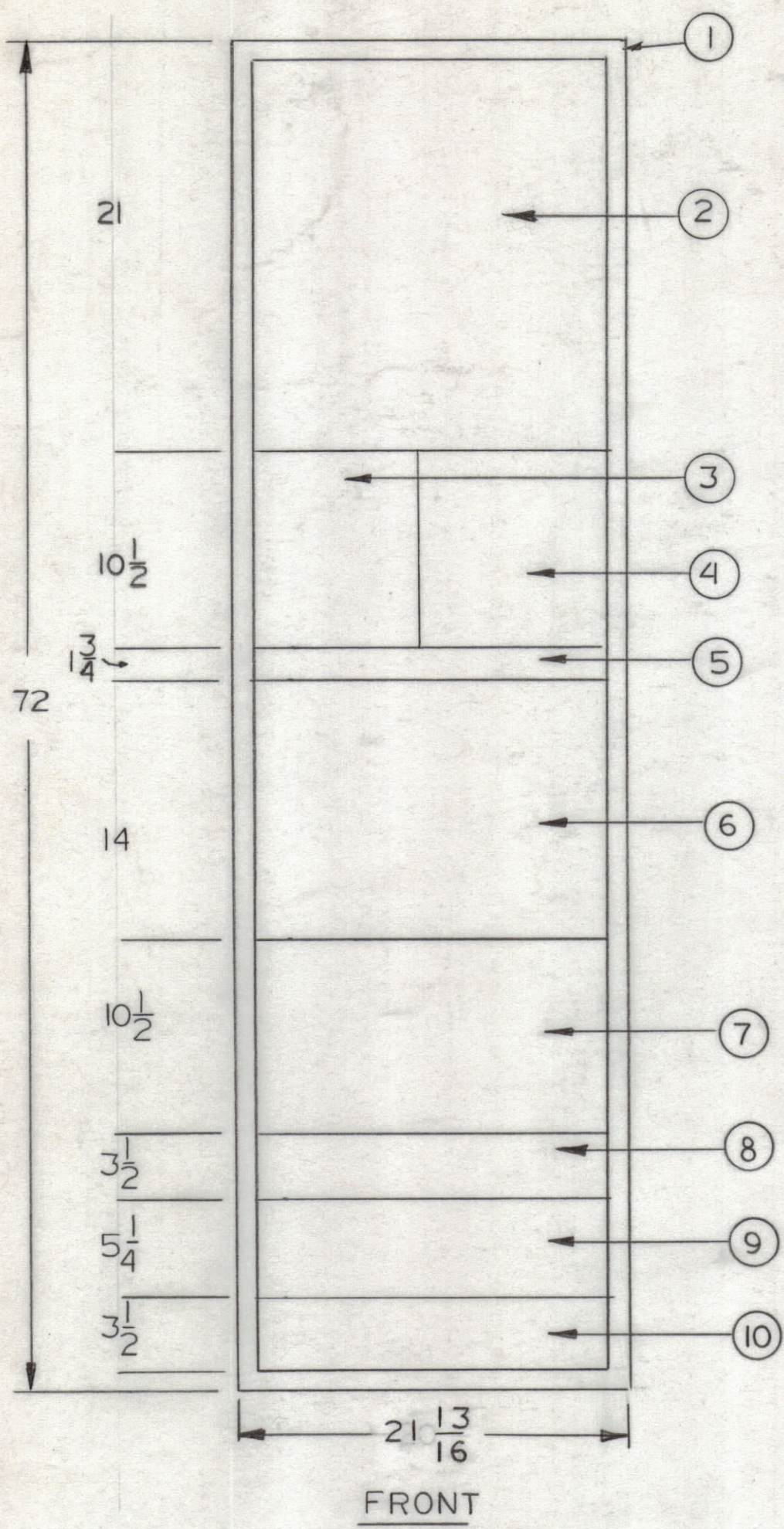
NOTICE TO PERSONS RECEIVING THIS DRAWING
 THE TECHNICAL MATERIEL CORPORATION claims proprietary right in the material disclosed hereon. This drawing is issued in confidence for engineering information only and may not be reproduced or used to manufacture anything shown hereon without permission from THE TECHNICAL MATERIEL CORPORATION to the user. This drawing is loaned for mutual assistance and is subject to recall at any time.

UNLESS OTHERWISE SPECIFIED DIMENSIONS ARE IN INCHES AND INCLUDE CHEMICALLY APPLIED OR PLATED FINISHES

TOLERANCES ON
 DECIMALS .X ± .05
 .XX ± .01
 .XXX ± .005
 FRACTIONS ± 1/64
 ANGLES ± 0° -30'

| QTY. REQ. | ITEM | PART NO. | DESCRIPTION | SYMBOL |
|------------------|------|----------|------------------------------|--------------|
| LIST OF MATERIAL | | | | |
| FINAL APPROVAL | | DATE | THE TECHNICAL MATERIEL CORP. | |
| MECH. DES. | | DATE | MAMARONECK, NEW YORK | |
| ELECT. DES. | | DATE | S.T.M.C. MODEL NO. DAVMC-2 | |
| CHECKED | | DATE | P/O AVMC-2 | |
| DRAWN | | DATE | SOURCE CONTROL DWG. | |
| MATERIAL | | | SIZE | ISSUE |
| FINISH | | | CODE IDENT. NO. | DWG NO. |
| | | | C 82679 | ID8034 |
| | | | SCALE 1/8" = 1" | SHEET 2 OF 3 |

| REVISIONS | | | | | | |
|-----------|-----|-------------|------|----------|-------|-----------|
| ZONE | LTR | DESCRIPTION | DATE | E.M.N.NO | DRAFT | CHKD APPD |



| QTY REQD | NOMEN OR DESC. | CODE IDENT | IDENT NO. | FIND NO. |
|----------|------------------------|------------|----------------|----------|
| 1 | JACK PNL | | JPP 4B4X32 | 11 |
| 1 | PANEL, BLANK | | MS8200-2 | 10 |
| 1 | VIDEO DIST. AMPS. | 49675 | TA-33 | 9 |
| 1 | JACK PNL. | | JPP404-16 | 8 |
| 1 | REMOTE CONT UNIT TK22 | 49675 | P/O TK-22 | 7 |
| 1* | AUDIO-VIDEO SWITCHER | 49675 | TS2B(4 FOR 1)* | 6 |
| 1 | SWITCHER | | AX8010 | 5 |
| 1 | MONITOR | 49675 | CUE-8 | 4 |
| 1 | WAVE FORM MONITOR | 49675 | TO4 | 3 |
| 1 | SHIPS T.V. | | AV-1090 | 2 |
| 1 | CABINET, ELECT. EQUIP. | | RAK153-19C | 1 |

| QTY REQ. | ITEM | PART NO. | DESCRIPTION | SYMBOL |
|------------------|------|----------|--|--------------|
| LIST OF MATERIAL | | | | |
| FINAL APPROVAL | | DATE | THE TECHNICAL MATERIEL CORP. MAMARONECK, NEW YORK ST MC MODEL NO. DAVMC-2 P/O AVMC-2 SOURCE CONTROL DWG | |
| MECH. DES. | | DATE | | |
| ELECT. DES. | | DATE | | |
| CHECKED | | DATE | | |
| DRAWN | | DATE | SIZE CODE IDENT. NO. DWG NO. ISSUE C 82679 ID8034 | |
| | | | SCALE 1/8"=1" | SHEET 3 OF 3 |

UNLESS OTHERWISE SPECIFIED DIMENSIONS ARE IN INCHES AND INCLUDE CHEMICALLY APPLIED OR PLATED FINISHES

TOLERANCES ON

| | |
|-------------|-----------|
| DECIMALS | FRACTIONS |
| .X ± .05 | ± 1/64 |
| .XX ± .01 | ANGLES |
| .XXX ± .005 | ± 0° -30' |

| 1 | 19C | |
|---|---------------|-----------|
| QTY / UNIT | MODEL USED ON | ASS'Y NO. |
| APPLICATION | | |
| CODE | | |
| NOTICE TO PERSONS RECEIVING THIS DRAWING THE TECHNICAL MATERIEL CORPORATION claims proprietary right in the material disclosed hereon. This drawing is issued in confidence for engineering information only and may not be reproduced or used to manufacture anything shown hereon without permission from THE TECHNICAL MATERIEL CORPORATION to the user. This drawing is loaned for mutual assistance and is subject to recall at any time. | | |
| MATERIAL | | |
| FINISH | | |