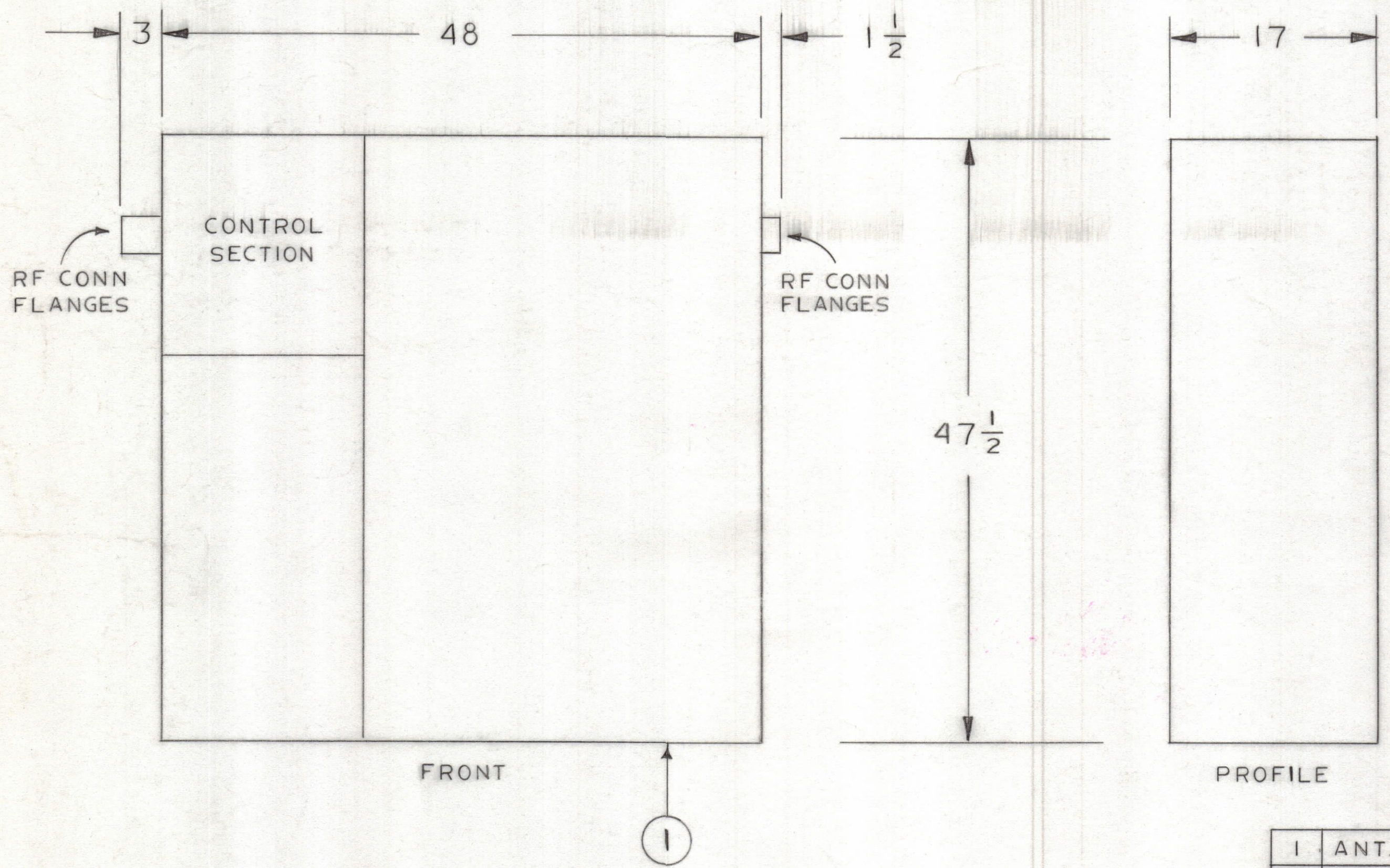


REVISIONS						
ZONE	LTR	DESCRIPTION	DATE	E.M.N.NO	DRAFT	CHKD APPD

D  
C  
B  
A



- NOTES:
1. INTERPRET IN ACCORDANCE WITH MIL-D-1000
  2. POWER INPUT: 115 VAC; 1 PHASE; 60 CPS
  3. POWER CONSUMPTION: 200 WATTS WHEN OPERATING
  4. WEIGHT: 257 LBS
  5. FOR PERFORMANCE, REFER TO TMC SPECIFICATION 40S18A039
  6. FOR TECHNICAL SPECIFICATIONS, REFER TO 566-94
  7. FOR SPARES, MAINTENANCE AND INSTALLATION REFER TO INSTRUCTION MANUAL

QTY. REQ	ANT. T-MATCH COMBINER	CODE IDENT	ACU-3 IDENT NO.	FIND NO.
	NOMEN OR DESC			

QTY. REQ.	ITEM	PART NO.	DESCRIPTION	SYMBOL
LIST OF MATERIAL				
<b>THE TECHNICAL MATERIEL CORP.</b> MAMARONECK, NEW YORK STMCC MODEL NO. ACU-3/ING ACU-3 SOURCE CONTROL DWG				

FINAL APPROVAL	DATE
<i>[Signature]</i>	4-1-68
MECH. DES.	DATE
<i>[Signature]</i>	4/7/68
ELECT. DES.	DATE
<i>[Signature]</i>	2-27-68
CHECKED	DATE
<i>[Signature]</i>	2-27-68
DRAWN	DATE
C.D. DEAN	2-23-68

1	UNIT 18	ASS'Y NO.
QTY / UNIT	MODEL USED ON	
APPLICATION		
	CODE	

**NOTICE TO PERSONS RECEIVING THIS DRAWING**  
 THE TECHNICAL MATERIEL CORPORATION claims proprietary right in the material disclosed hereon. This drawing is issued in confidence for engineering information only and may not be reproduced or used to manufacture anything shown hereon without permission from THE TECHNICAL MATERIEL CORPORATION to the user. This drawing is loaned for mutual assistance and is subject to recall at any time.

ID 8033

B

A