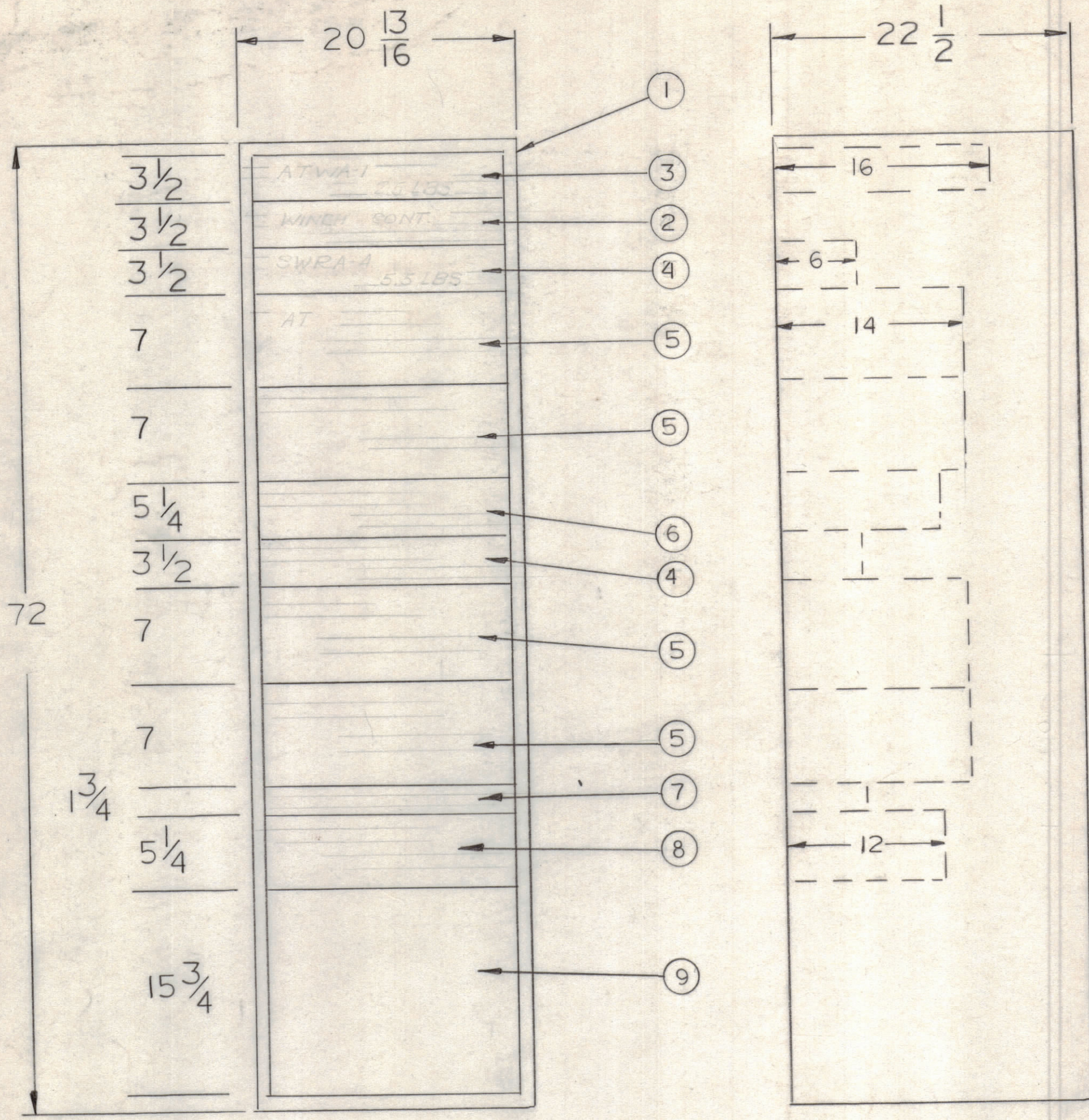


REVISIONS						
ZONE	LTR	DESCRIPTION	DATE	E.M.N.NO	DRAFT	CHKD APPD
	X1	REDRAW - EQUIP REARR	4-29-68		GB	
	B	SEE SHEET 2				



- NOTES:
1. INTERPRET IN ACCORDANCE WITH MIL-D-1000
 2. POWER INPUT 115 VAC; 1 PHASE; 60 CPS
 3. POWER CONSUMPTION; 500 WATTS
 4. WEIGHT: 402 LBS TOTAL UNIT 7
 5. FOR PERFORMANCE, REFER TO QA 5034 (34057A065)
 6. FOR TECHNICAL SPECIFICATIONS REFER TO S66-94

QTY REQ	NOMEN. OR DESC.	CODE IDENT	IDENT NO	FIND NO.
1	PANEL, BLANK		MS8200-1	9
1	ATMC-1 REMOTE READBACK PNL.		ATMCA-1	8
1	XMTR LEVEL CONTROL		ATPC-1	7
1	ACU-3 REMOTE READBACK PNL.		ACUA-3	6
4	ATS-4 REMOTE CONTROL PNL.		ATSA-4	5
2	INDICATOR SWR		SWRA-4	4
1	ATW-1 REMOTE READBACK PNL.		ATWA-1	3
1	WINCH CONTROL		AX 8049	2
1	CABINET, ELECT EQUIP.		RAK151-7B	1

FRONT PROFILE

QTY. REQ.	ITEM	PART NO.	DESCRIPTION	SYMBOL
LIST OF MATERIAL				
THE TECHNICAL MATERIEL CORP. MAMARONECK, NEW YORK SOURCE CONTROL DRAWING P/O ASMA-14				
FINAL APPROVAL		DATE	THE TECHNICAL MATERIEL CORP. MAMARONECK, NEW YORK SOURCE CONTROL DRAWING P/O ASMA-14	
MECH. DES.		DATE		
ELECT. DES.		DATE		
CHECKED		DATE		
DRAWN		DATE	SIZE CODE IDENT.NO. DWG NO. ISSUE C 82679 ID 8014 B₂	
MATERIAL		SCALE		
FINISH		SHEET 1 OF 2		

UNIT 7B

QTY / UNIT	MODEL USED ON	ASS'Y NO.
APPLICATION		
CODE		

NOTICE TO PERSONS RECEIVING THIS DRAWING
THE TECHNICAL MATERIEL CORPORATION claims proprietary right in the material disclosed hereon. This drawing is issued in confidence for engineering information only and may not be reproduced or used to manufacture anything shown hereon without permission from **THE TECHNICAL MATERIEL CORPORATION** to the user. This drawing is loaned for mutual assistance and is subject to recall at any time.

4

3

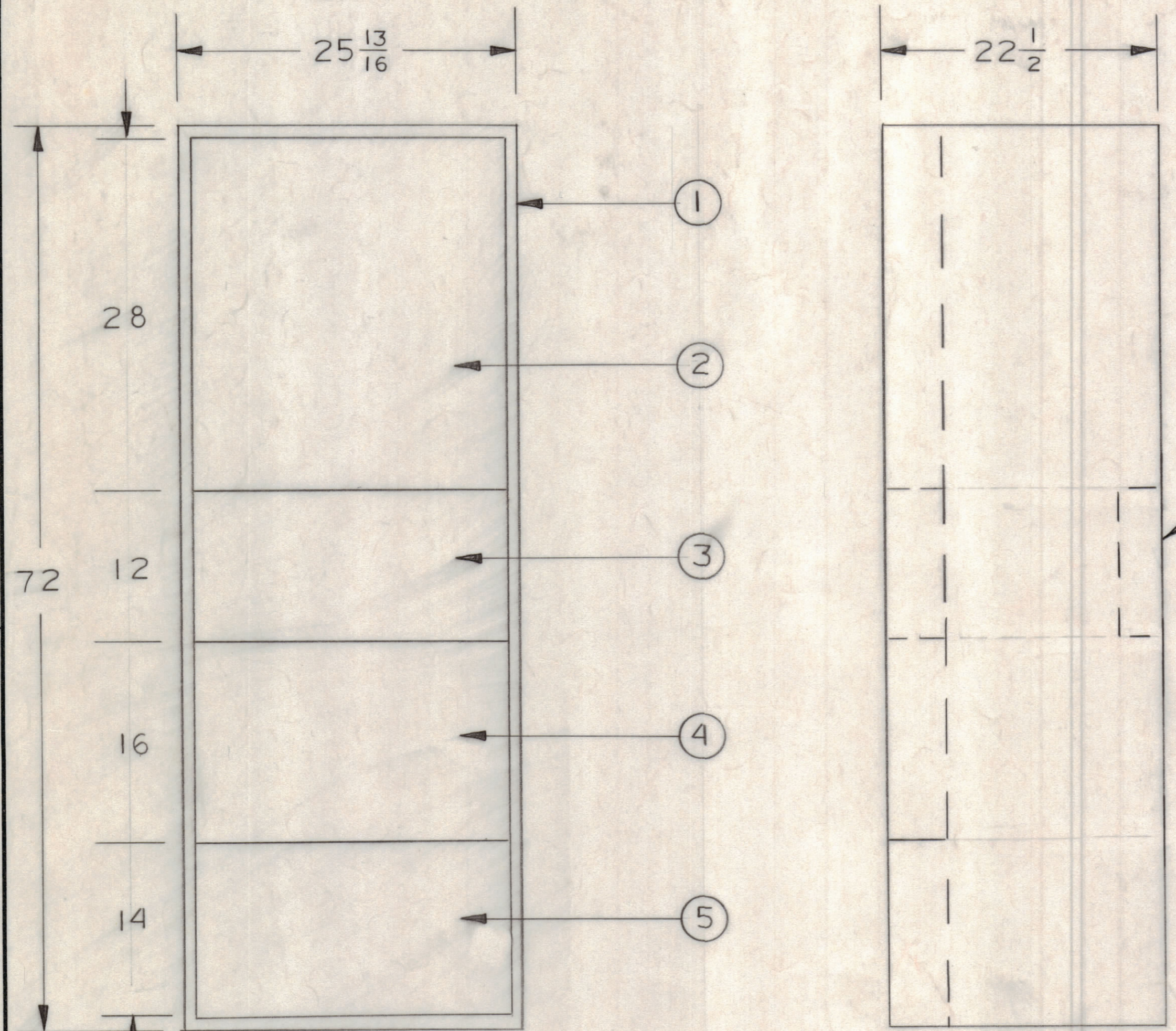
2

1

REVISIONS						
ZONE	LTR	DESCRIPTION	DATE	E.M.N.NO	DRAFT	CHKD APPD
	A	ADDED INDENT. NO TO 2	5/21/68		C. GRUB	
	B	ADDED ©	6/30/68		CB III	

D

D



NOTES:
 1. INTERPRET IN ACCORDANCE WITH MIL-D-1000.
 2. SEE SPECIFICATIONS FOR TOTAL WEIGHT OF UNIT 7.

part to 6075

QTY REQ	NOMEN OR DESC	CODE IDENT	IDENT NO.	FIND NO.
1	INTERFACE PNL		AX8077	6
1	DEHYDRATOR SECTION			5
1	PRESSURE SECTION			4
1	JACK PNL SECTION		AX 8056	3
1	R.F. PATCH FIELD		AX 8066	2
1	CAB., ELEC EQUIP		RAK150-7A	1

C

C

B

B

A

A

FRONT

PROFILE

QTY / UNIT	MODEL USED ON	ASS'Y NO.
1	UNIT 7A	
APPLICATION		
	CODE	

NOTICE TO PERSONS RECEIVING THIS DRAWING
 THE TECHNICAL MATERIEL CORPORATION claims proprietary right in the material disclosed hereon. This drawing is issued in confidence for engineering information only and may not be reproduced or used to manufacture anything shown hereon without permission from THE TECHNICAL MATERIEL CORPORATION to the user. This drawing is loaned for mutual assistance and is subject to recall at any time.

UNLESS OTHERWISE SPECIFIED DIMENSIONS ARE IN INCHES AND INCLUDE CHEMICALLY APPLIED OR PLATED FINISHES

TOLERANCES ON	
DECIMALS	FRACTIONS
.X ± .05	± 1/64
.XX ± .01	ANGLES
.XXX ± .005	± 0° -30'

MATERIAL
 FINISH

FINAL APPROVAL	DATE
<i>[Signature]</i>	2-15-68
MECH. DES.	DATE
<i>[Signature]</i>	2/15/68
ELECT. DES.	DATE
<i>[Signature]</i>	2/12/68
CHECKED	DATE
<i>[Signature]</i>	2-12-68
DRAWN	DATE
C.D. DEAN	2-8-68

LIST OF MATERIAL
THE TECHNICAL MATERIEL CORP.
 MAMARONECK, NEW YORK
 TMC MODEL NO. ASMA-1
 SOURCE CONTROL DWG.

SIZE	CODE IDENT.NO.	DWG NO.	ISSUE
C	82679	ID8014	B
SCALE 1/8" = 1"			SHEET 2 OF 2

4

3

2

1

ID8014