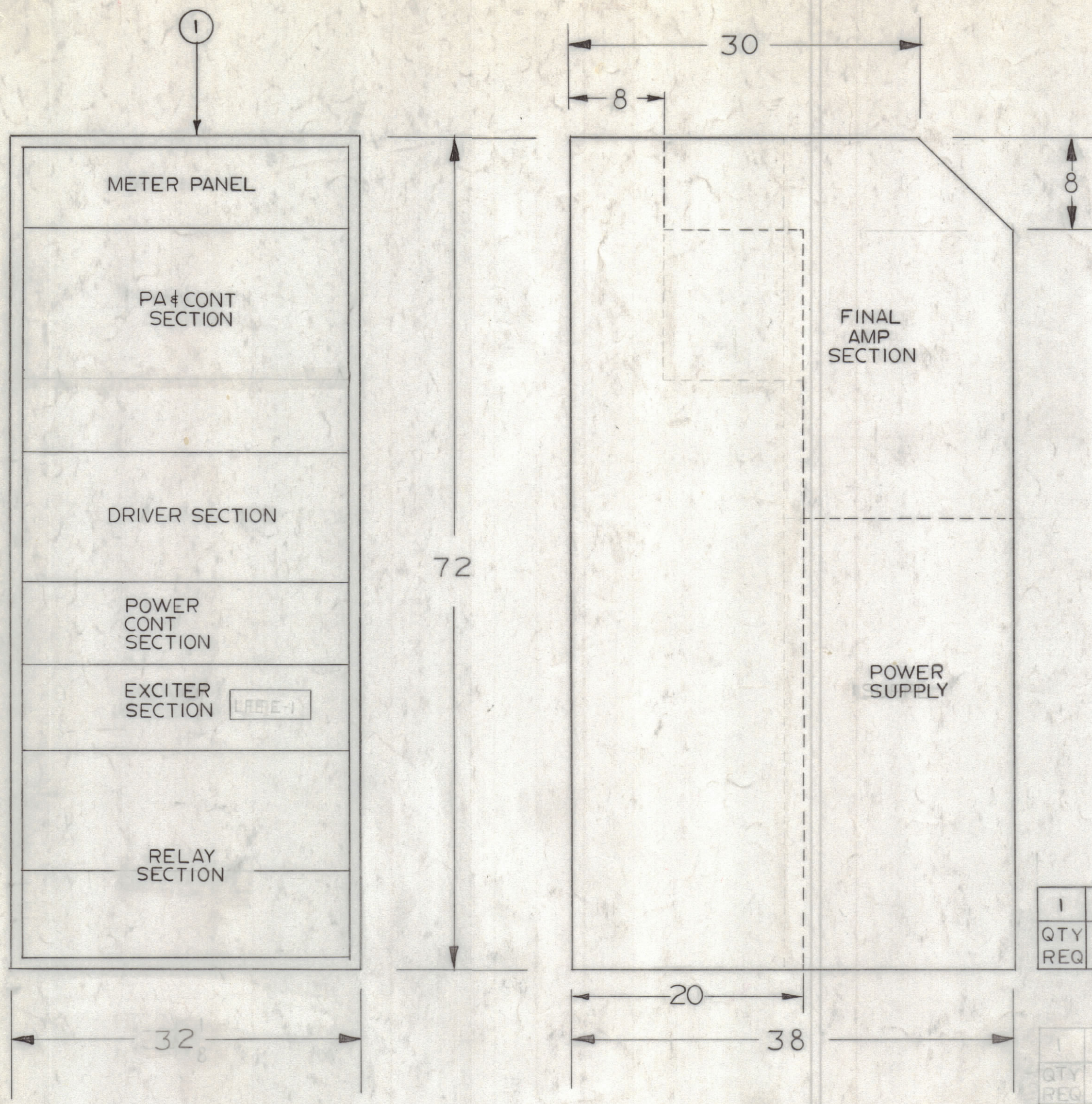


REVISIONS						
ZONE	LTR	DESCRIPTION	DATE	E.M.N.NO	DRAFT	CHKD APPD



- NOTES:
1. INTERPRET IN ACCORDANCE WITH MIL-D-1000
 2. POWER INPUT: 208 VAC, 3 PHASE, 60 CPS
 3. POWER CONSUMPTION: 18,000 WATTS
 4. WEIGHT: 1571 LBS
 5. FOR PERFORMANCE, REFER TO TMC SPECIFICATION 40STAO42
 6. FOR TECHNICAL SPECIFICATIONS, REFER TO S66-94
 7. FOR SPARES, MAINTENANCE AND INSTALLATION REFER TO INSTRUCTION MANUAL

QTY REQ	ITEM	DESCRIPTION	CODE IDENT	GPT IOK LFE IDENT NO.	SYMBOL
1	TRANSMITTING SET, RADIO				1

QTY REQ	ITEM	DESCRIPTION	CODE IDENT	GPT IOK LFE IDENT NO.	SYMBOL
1	TRANSMITTING SET, RADIO				1

QTY REQ	ITEM	PART NO.	DESCRIPTION	SYMBOL

LIST OF MATERIAL

FINAL APPROVAL	DATE	THE TECHNICAL MATERIEL CORP. MAMARONECK, NEW YORK TMC MODEL NO GPT IOK LFE GPT IOK LFE SOURCE CONTROL DWG
MECH. DES.	DATE	
ELECT. DES.	DATE	
CHECKED	DATE	
DRAWN	DATE	

SIZE	CODE IDENT NO.	DWG NO.	ISSUE
C	82679	ID8010	1

SCALE 1/8" = 1"

SHEET 1 OF 1

UNIT I	ASS'Y NO.

APPLICATION	CODE

NOTICE TO PERSONS RECEIVING THIS DRAWING
 THE TECHNICAL MATERIEL CORPORATION claims proprietary right in the material disclosed hereon. This drawing is issued in confidence for engineering information only and may not be reproduced or used to manufacture anything shown hereon without permission from THE TECHNICAL MATERIEL CORPORATION to the user. This drawing is loaned for mutual assistance and is subject to recall at any time.