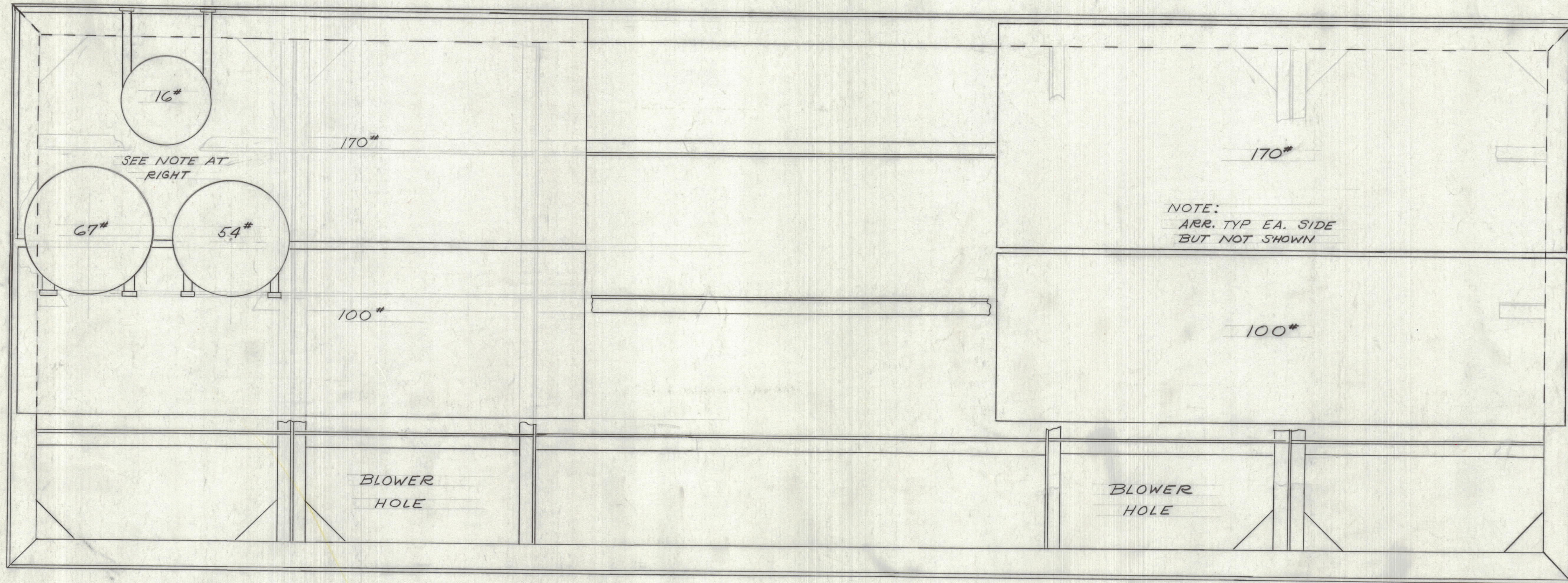


REVISIONS						
ZONE	LTR	DESCRIPTION	DATE	E.M.N.NO	DRAFT	CHKD APPD



# = POUNDS

REF:  
MS8045 "TOP & REAR"  
MS8043 "BASE" (SHT 3)

QTY / UNIT	MODEL USED ON	ASS'Y NO.

NOTICE TO PERSONS RECEIVING THIS DRAWING  
THE TECHNICAL MATERIEL CORPORATION claims proprietary right in the material disclosed herein. This drawing is issued in confidence for engineering information only and may not be reproduced or used to manufacture anything shown herein without permission from THE TECHNICAL MATERIEL CORPORATION to the user. This drawing is loaned for mutual assistance and is subject to recall at any time.

UNLESS OTHERWISE SPECIFIED DIMENSIONS ARE IN INCHES AND INCLUDE CHEMICALLY APPLIED OR PLATED FINISHES

TOLERANCES ON

DECIMALS	FRACTIONS
X ± .05	± 1/64
.XX ± .01	ANGLES
.XXX ± .005	± 0° -30'

QTY. REQ.	ITEM	PART NO.	DESCRIPTION	SYMBOL
LIST OF MATERIAL				
THE TECHNICAL MATERIEL CORP. MAMARONECK, NEW YORK				
BASE UNIT 12				
MATERIAL			SIZE	CODE IDENT. NO. DWG NO.
FINISH			D	82679 ID8006
			SCALE	SHEET OF

FINAL APPROVAL: *[Signature]* DATE: 2-5-68  
 MECH. DES: *[Signature]* DATE: 12-10-68  
 ELECT. DES: *[Signature]* DATE: 12-10-68  
 CHECKED: *[Signature]* DATE: 1-10-68  
 DRAWN: *[Signature]* DATE: 1-10-68

ID8006