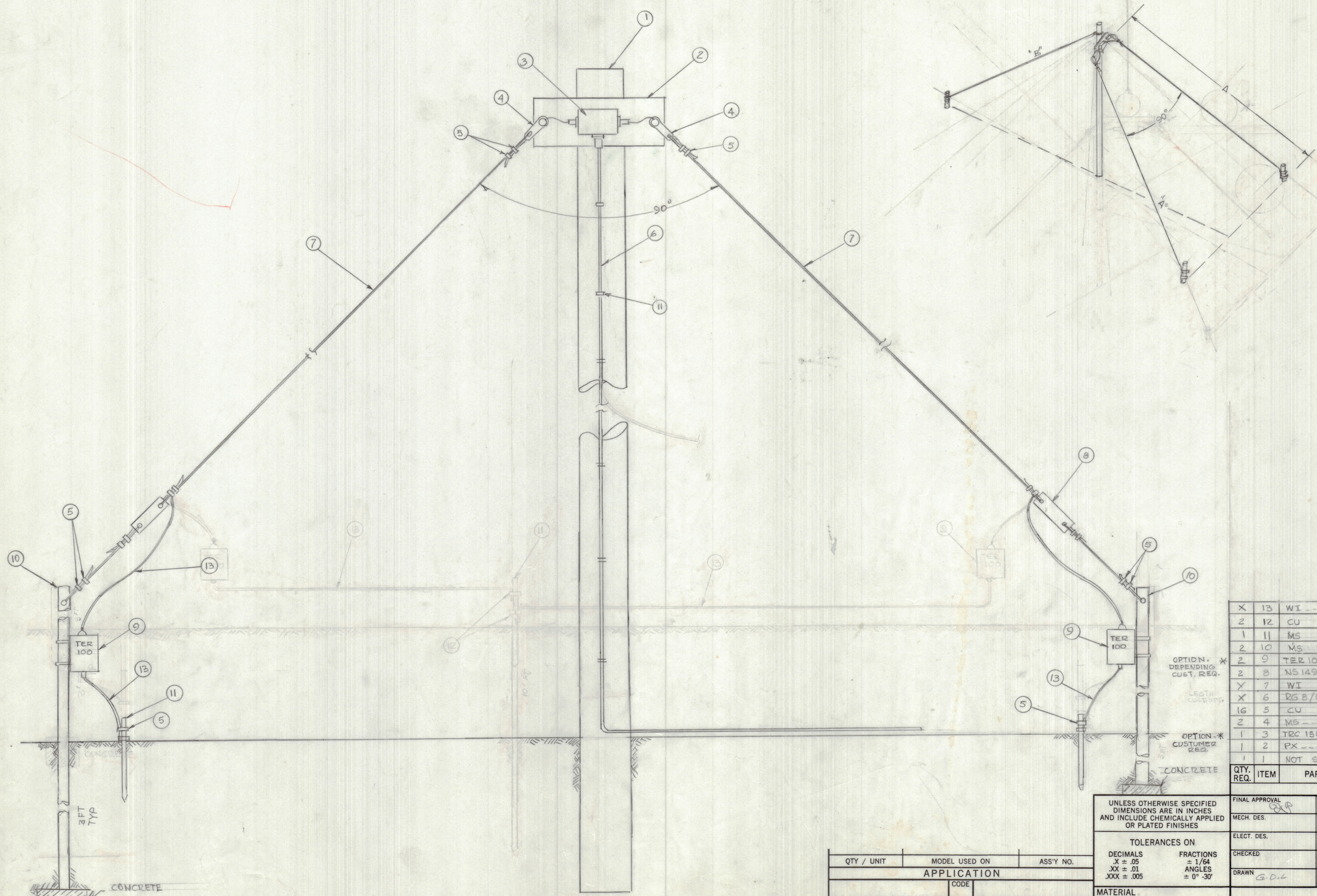


REVISIONS				DATE	APPROVED
E.M.N.O	DRAFT	CHKD	ZONE	LTR	DESCRIPTION



DIMENSIONS	
"A"	WILL BE DETERMINATE BY CUSTOMER
"B"	WILL BE DETERMINATE BY CUSTOMER
ANGLE	WILL BE 90°

QTY. REQ.	ITEM	PART NO.	DESCRIPTION	SYMBOL
X 13	WI		#6 COPPER WIRE	
2	12	CU	CLAMP GROUND	
1	11	MS	3/4 DIA COPPER WELD END 8 FT	
2	10	MS	2" DIA GAL. PIPE	
2	9	TER 100/600	100 WATT TERMINATION LOAD	
2	8	NS 149-1	12" INSULATED GIO MAT.	
X 7	WI		150 FT COPPER WELD POLYURETHANE COATED	
X 6	RG 8/U		COAX CABLE	
16	5	CU	CLAMP, WIRE	
2	4	MS	TOP WIRE SUPPORT	
1	3	TRC 150/600	BALUN	
1	2	PX	PLATE MTG GIO 3/4THK	
1	1	NOT SUPPLIED	POLE 40 FT 16 DIA	

FINAL APPROVAL		DATE	LIST OF MATERIAL		
MECH. DES.	DATE	5/2/82	THE TECHNICAL MATERIEL CORP. MAMARONECK, NEW YORK DIPOLE INVERTED		
ELECT. DES.	DATE				
CHECKED	DATE				
DRAWN	DATE	3-2-82			
MATERIAL		SIZE	CODE IDENT NO.	DWG NO.	ISSUE
FINISH		D	82679	ID 482	1
		SCALE		SHEET	OF

QTY / UNIT	MODEL USED ON	ASS'Y NO.
APPLICATION		
CODE		

NOTICE TO PERSONS RECEIVING THIS DRAWING
THE TECHNICAL MATERIEL CORPORATION claims proprietary right in the material disclosed hereon. This drawing is issued in confidence for engineering information only and may not be reproduced or used to manufacture anything shown hereon without permission from THE TECHNICAL MATERIEL CORPORATION to the user. This drawing is loaned for mutual assistance and is subject to recall at any time.

UNLESS OTHERWISE SPECIFIED DIMENSIONS ARE IN INCHES AND INCLUDE CHEMICALLY APPLIED OR PLATED FINISHES

TOLERANCES ON

DECIMALS	FRACTIONS
.X ± .05	± 1/64
.XX ± .01	ANGLES
.XXX ± .005	± 0° - 30'