

ANTENNA & TOWER DATA

ANGLE θ	LEG LENGTH	L	$\frac{L}{2}$	W	$\frac{W}{2}$
70°	500'	949.69'	474.84'	352.02'	176.01'
(SEE NOTE) *					

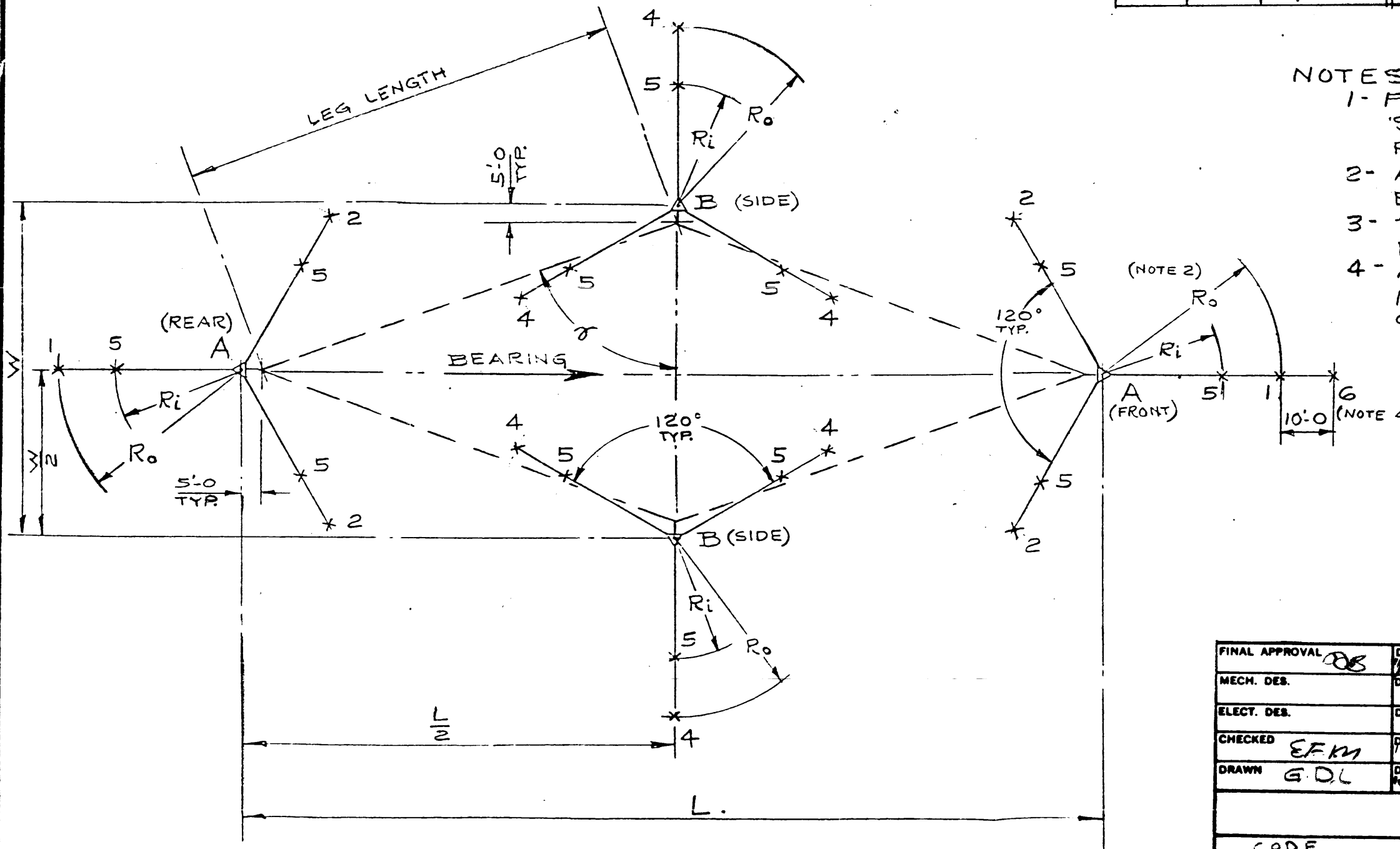
NOTE: *

THE 70° ANGLE SHOWN ON THIS DRAWING IS FOR REFERENCE ONLY.

CUSTOMER'S RADIATION CHARACTERISTICS REQD. ARE TO DETERMINE THIS ANGLE BETWEEN THE PRINCIPLE AXIS & SIDE; IN DEGREES.

ANCHOR DATA

ANCHOR DWG. B-1018-21		OVALEYE ANCHOR ROD SIZE	CROSS CHANNEL ANCHOR
LOCATION	ANG. NO.		
1	21-3	1" x 10'-0	1087-3
2	21-5	5/8" x 7'-0	1087-1
3	21-7	3/4" x 9'-0	1087-2
4	21-7	3/4" x 9'-0	1087-2
5	21-5	5/8" x 7'-0	1087-1
6	21-7	3/4" x 9'-0	1087-2



NOTES -

- FOR ERECTION DIAGRAM OF TOWERS SEE ELEVATION DRAWINGS FOR PARTICULAR JOB
- ANCHOR RADIUS 'R_o' SAME AS TOP GUY ELEV. - SEE ERECTION DIAGRAM
- TOWER ERECTION DETAILS & TOWER FOUNDATION - SEE DWG. ID 466
- ANCHOR 6 IS USED IF ANTENNA IS RAISED WITH SHEAVE MOUNTING (DWG. ID 466) ON FRONT END TOWER. OMIT ANCHOR INSTALLATION IF ANTENNA IS RAISED OTHERWISE.

FINAL APPROVAL <i>[Signature]</i>	DATE <i>[Date]</i>	THE TECHNICAL MATERIEL CORP. MAMARONECK, NEW YORK			
MECH. DES.	DATE				
ELECT. DES.	DATE	BASE & ANCHOR PLAN RHOMBIC ANTENNA - DOUBLE ANCHOR RAD.			
CHECKED <i>EFM</i>	DATE <i>11/12/81</i>				
DRAWN <i>GDL</i>	DATE <i>10/81</i>				
CODE B-32-1000-4	SCALE	SIZE B	CODE IDENT. NO. 82679	DWG NO. ID 472	ISSUE
		SHEET		OF	