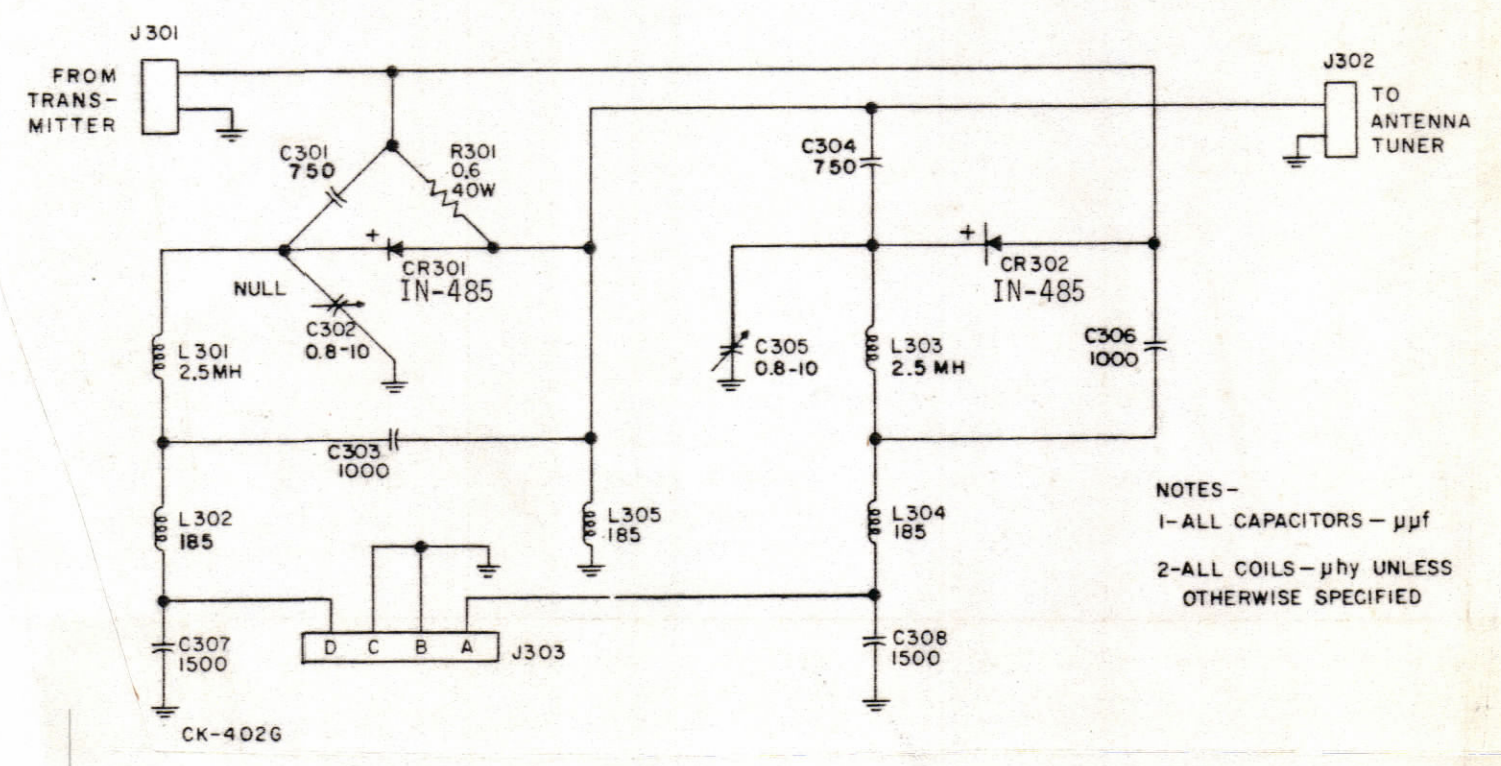
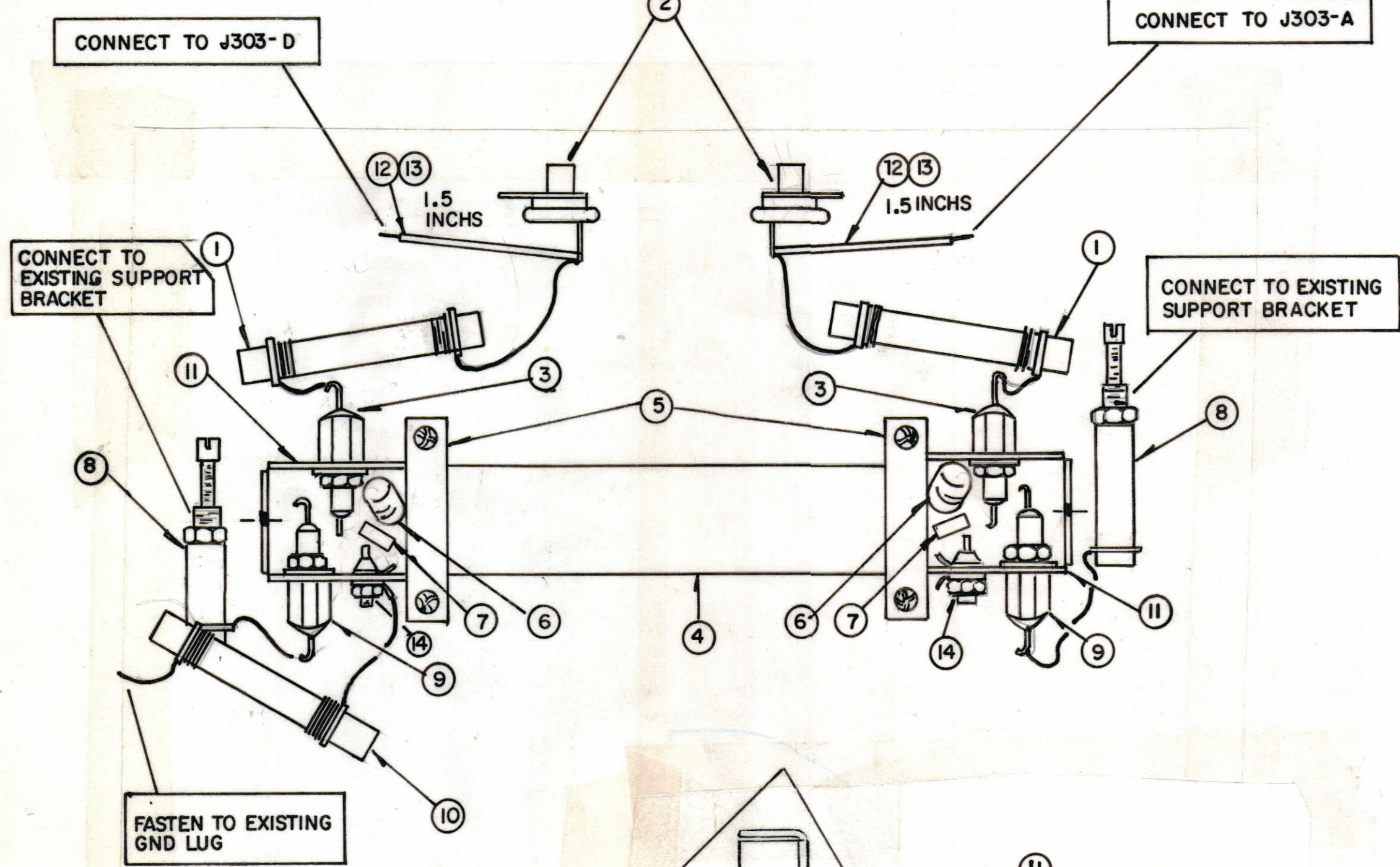


REVISIONS						
ZONE	LTR	DESCRIPTION	DATE	E.M.N.NO	DRAFT	CHKD APPD
		ORIGINAL RELEASE	7-9-80		du	

REMOVE EXISTING HARDWARE AND FASTEN ITEM 2 IN APPROPRIATE HOLES



NOTES -
1- ALL CAPACITORS - μ mf
2- ALL COILS - μ hy UNLESS OTHERWISE SPECIFIED

QTY. REQ.	ITEM	PART NO.	DESCRIPTION	SYMBOL
2	14	TE115-1	TERM, TURRET	
X	13	PX370	INSUL, SLEEVING TEFLON	
X	12	WL100-7	WIRE, BUSS	
2	11	MS6960	COUPLER, COMP MTG	
1	10	CL178	COIL RF	L305
2	9	CK70AW751M	CAP, FIXED CERAMIC	C301, C304
2	8	CV102	CAP, VAR	C302, C305
2	7	IN485	DIODE	CR301, CR302
2	6	CL140-1	CHOKE, RF	L301, L303
2	5	CUI77	CLAMP, RESISTOR	USE ON R301
1	4	RR122-0.6	RESISTOR, FIXED FILM	R301
2	3	CK70AW102M	CAP, FIXED CERAMIC	C303, C306
2	2	CB21PX152K	CAP, FIXED MICA	C307, C308
2	1	CL254	COIL, RF FIXED	L302, L304

LIST OF MATERIAL

THE TECHNICAL MATERIEL CORP.
MAMARONECK, NEW YORK

KIT-451, INSTALLATION

REPLACEMENT OF DIODE SENSORS AND RESISTANCE ELEMENTS IN THE DIRECTIONAL COUPLER CU-2, CU-2B

UNLESS OTHERWISE SPECIFIED DIMENSIONS ARE IN INCHES AND INCLUDE CHEMICALLY APPLIED OR PLATED FINISHES

TOLERANCES ON

DECIMALS	FRACTIONS
.X \pm .05	\pm 1/64
.XX \pm .01	ANGLES
.XXX \pm .005	\pm 0°-30'

FINAL APPROVAL: *[Signature]* DATE: 9/3/80
MECH. DES. DATE: 8-29-80
ELECT. DES. DATE:
CHECKED DATE:
DRAWN: R UZZO DATE: 8-29-80

QTY / UNIT	MODEL USED ON	ASS'Y NO.
APPLICATION		
CODE		
MATERIAL		
FINISH		

NOTICE TO PERSONS RECEIVING THIS DRAWING
THE TECHNICAL MATERIEL CORPORATION claims proprietary right in the material disclosed herein. This drawing is issued in confidence for engineering information only and may not be reproduced or used to manufacture anything shown herein without permission from THE TECHNICAL MATERIEL CORPORATION to the user. This drawing is loaned for mutual assistance and is subject to recall at any time.

SIZE	CODE IDENT. NO.	DWG NO.	ISSUE
C	82679	ID445	\emptyset
SCALE	SHEET		OF