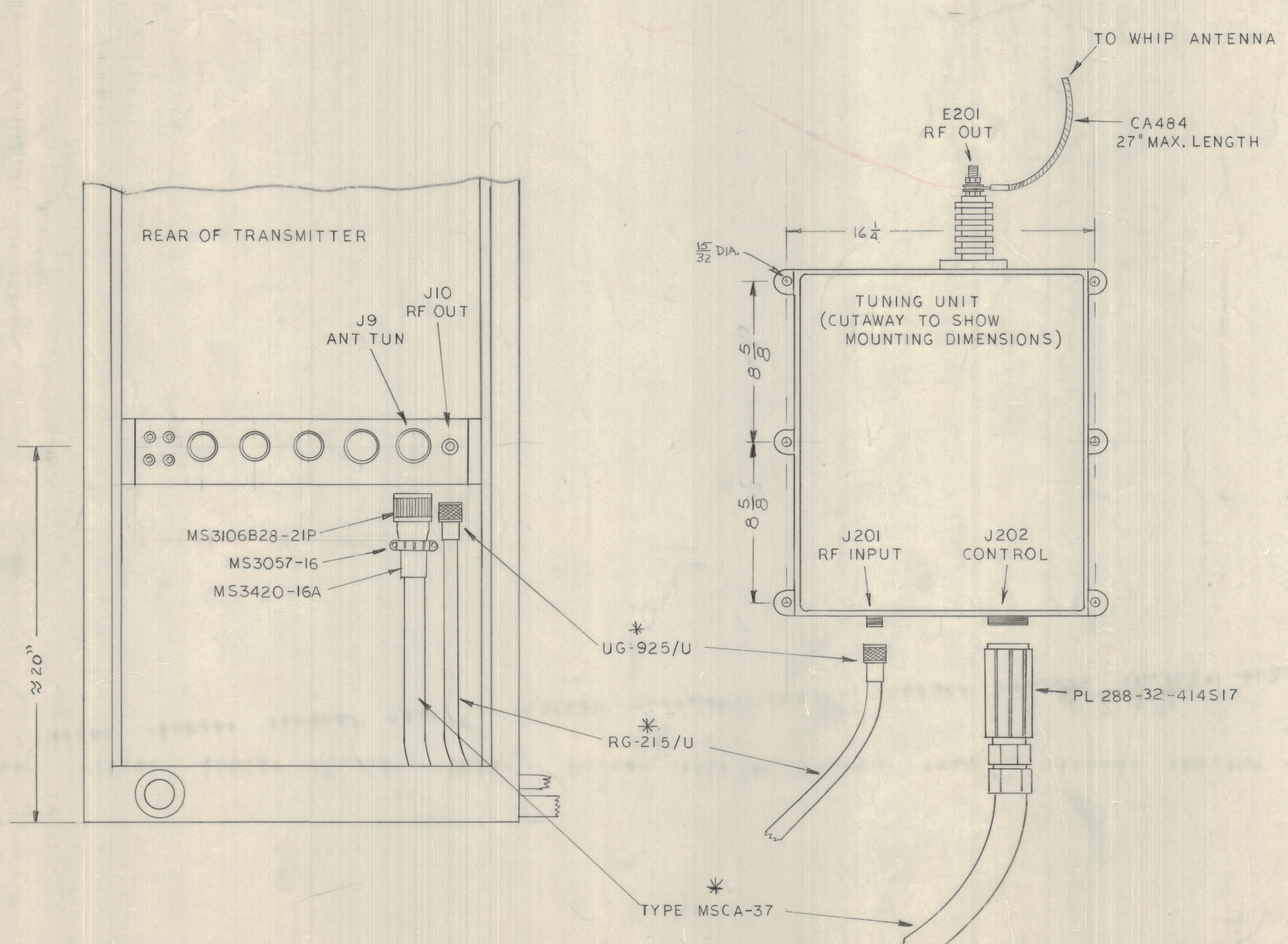


E.M.N.O		DRAFT		CHKD	ZONE	LTR	REVISIONS		DATE	APPROVED
							Ø ORIGINAL RELEASE		1-10-77	*



CONTROL CABLE INTERCONNECTION	
FROM J9 PIN NO.	TO J202 PIN NO.
A	A
B	B
C	C
D	D
E	E
F	F
G	G
H	H
J	J
K	K
L	L
M	M
N	N
P	P
R	R
S	S
T	T
U	U
V	V
W	W
X	X
Y	Y
Z	Z
a	a
b	b
c	c
d	d
e	e
f	f
g	g
h	h
j	j
k	k
L	L
m	m
n	n
p	p
r	r
s	s

NOTES:
 * FOR SHIP BOARD INSTALLATION USE MSCA-37 (ARMORED SHIELD) AND RG215/U
 FOR OTHER INSTALLATIONS USE MSC-37 AND RG 8/U (CA480-179) RF CABLE -
 UNLESS OTHERWISE SPECIFIED BY CUSTOMER.

QTY / UNIT	MODEL USED ON	ASSY NO.
	ATSA-3	
APPLICATION		
CODE		
<small>NOTICE TO PERSONS RECEIVING THIS DRAWING</small> <small>THE TECHNICAL MATERIEL CORPORATION claims proprietary right in the material disclosed hereon. This drawing is issued in confidence for engineering information only and may not be reproduced or used to manufacture anything shown hereon without permission from THE TECHNICAL MATERIEL CORPORATION to the user. This drawing is loaned for mutual assistance and is subject to recall at any time.</small>		

QTY. REQ.	ITEM	PART NO.	DESCRIPTION	SYMBOL
LIST OF MATERIAL				
FINAL APPROVAL		DATE	THE TECHNICAL MATERIEL CORP.	
MECH. DES.		DATE	MAMARONECK, NEW YORK	
ELECT. DES.		DATE	INSTALLATION DRAWING	
CHECKED		DATE	TUNING UNIT TO TRANSMITTER	
DRAWN		DATE	INTERCONNECTION	
MATERIAL		DATE	SIZE	CODE
FINISH		DATE	IDENT NO.	DWG NO.
		DATE	D 82679	ID 431
		DATE	SCALE	SHEET OF
		DATE		1