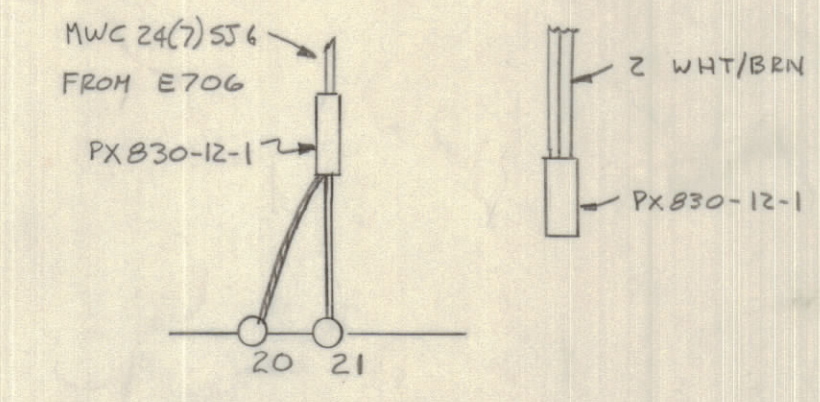
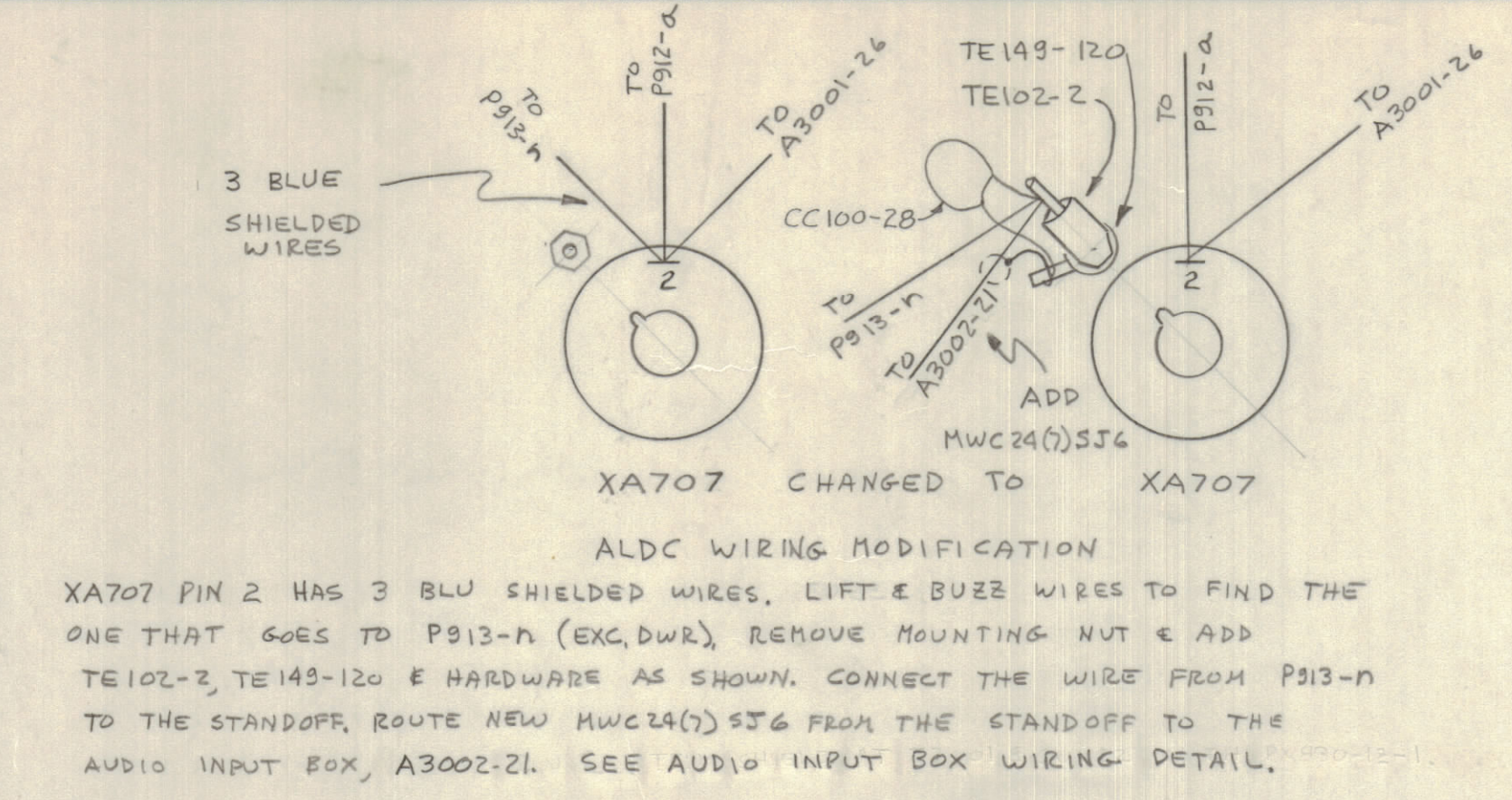
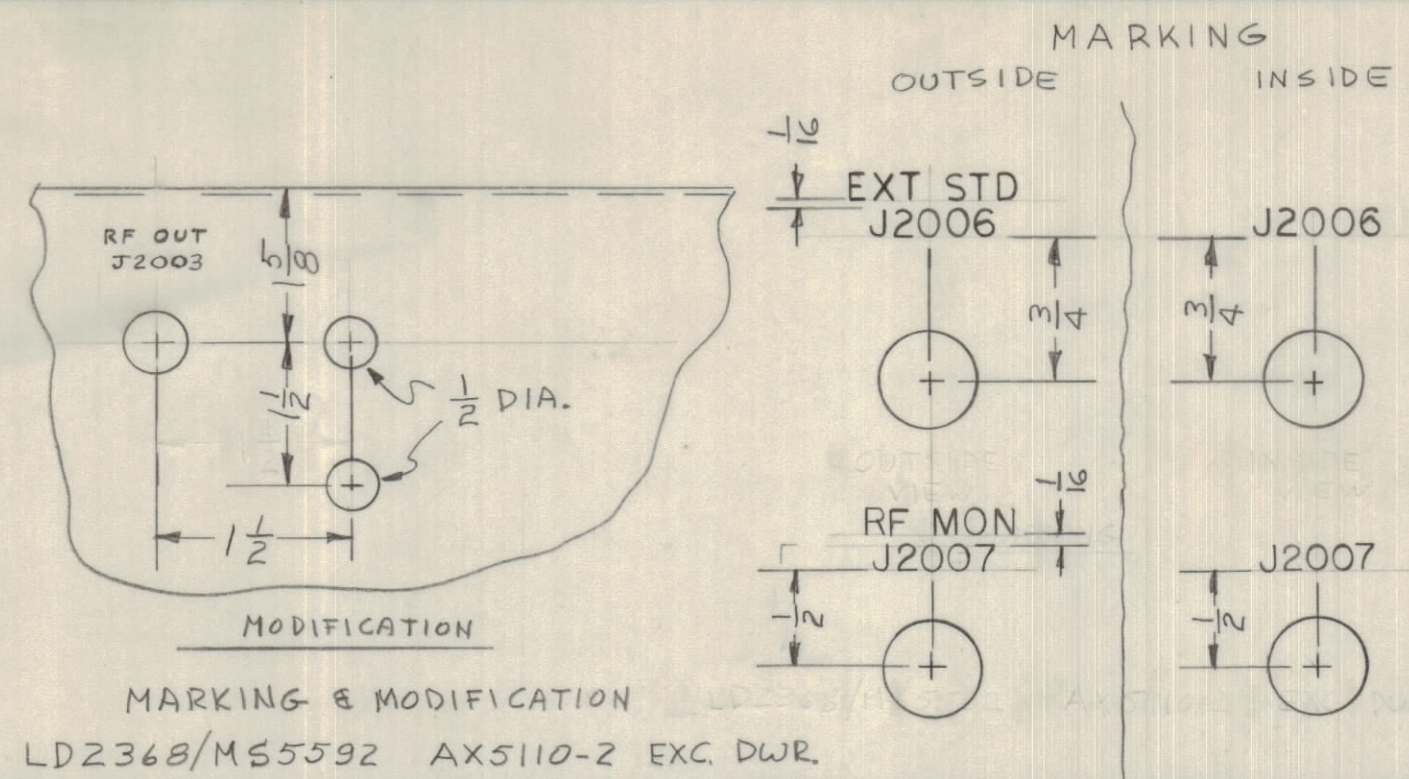
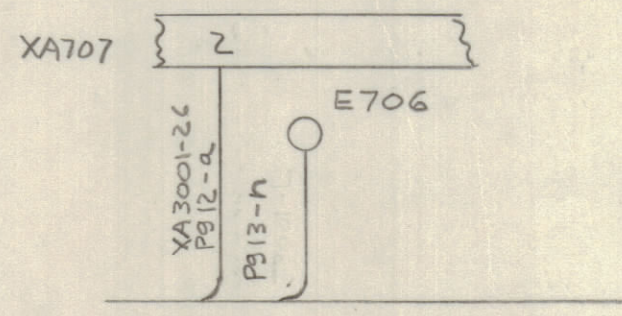
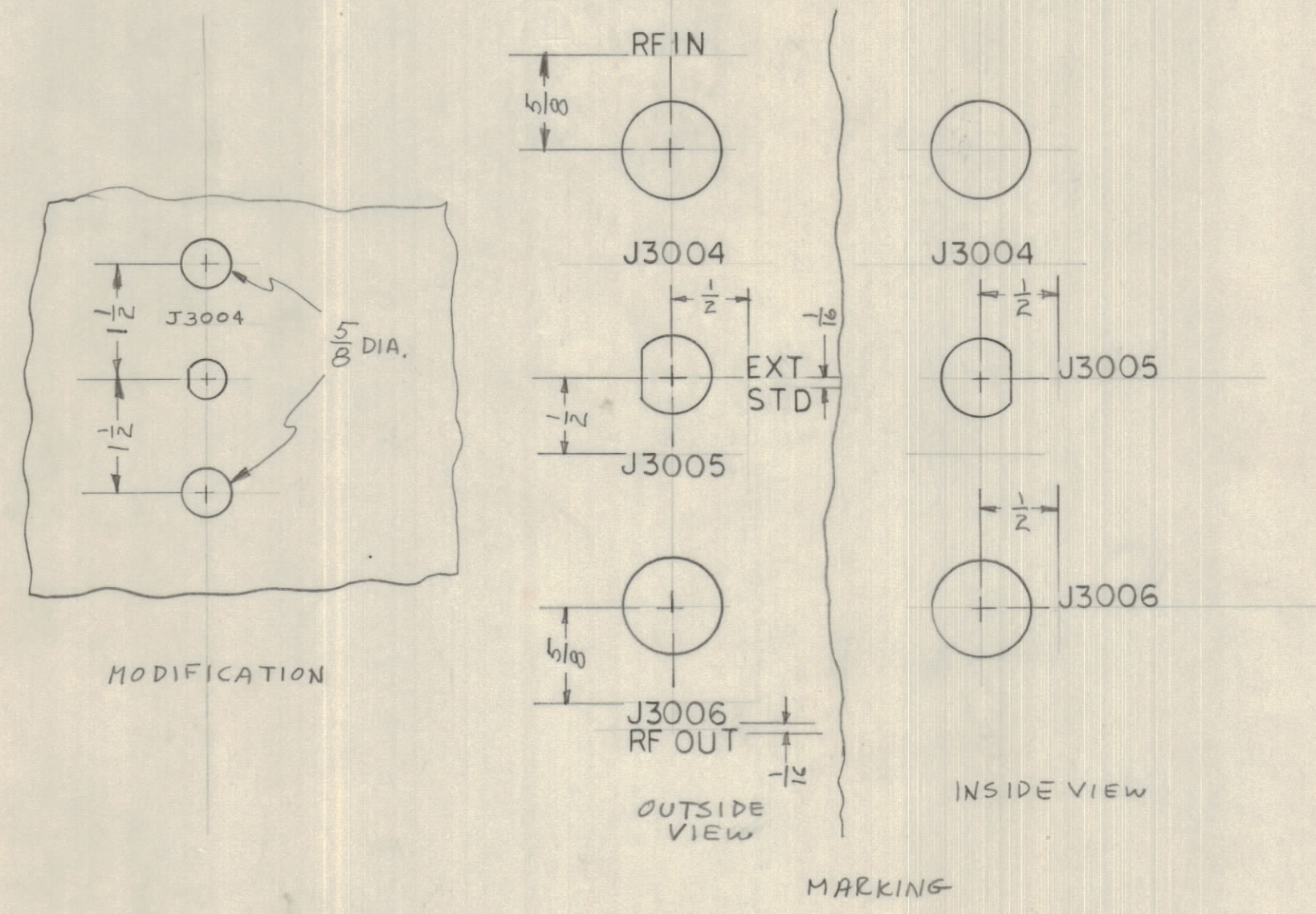


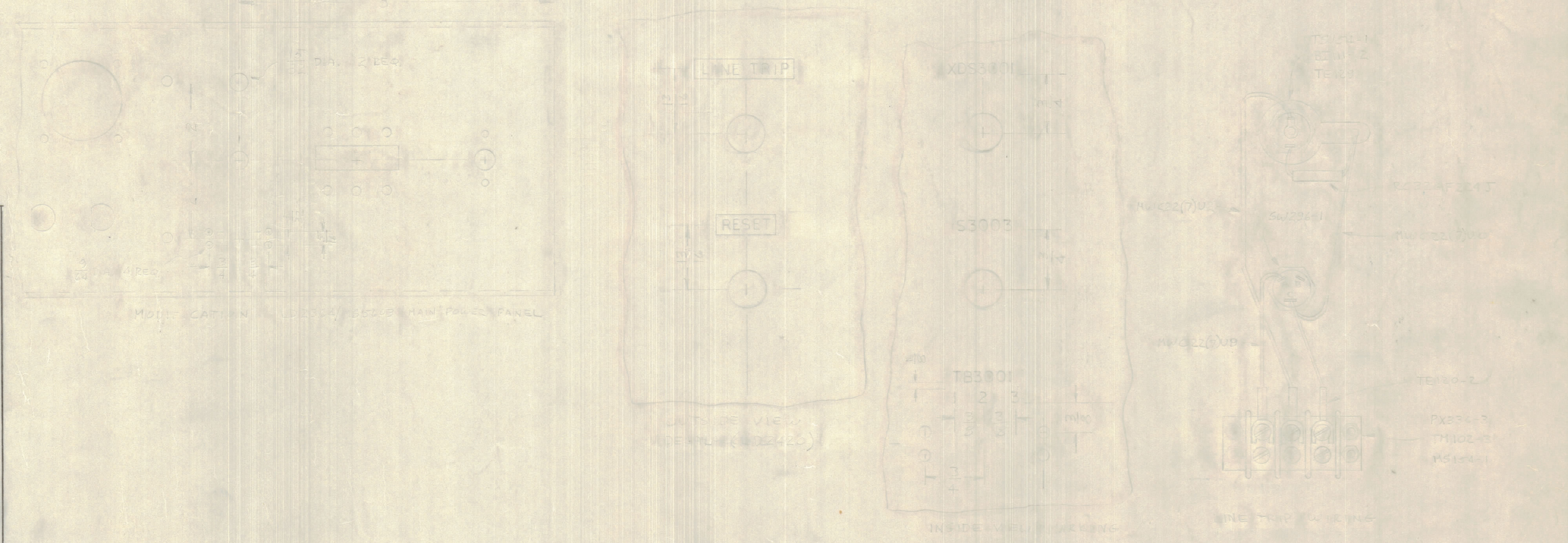
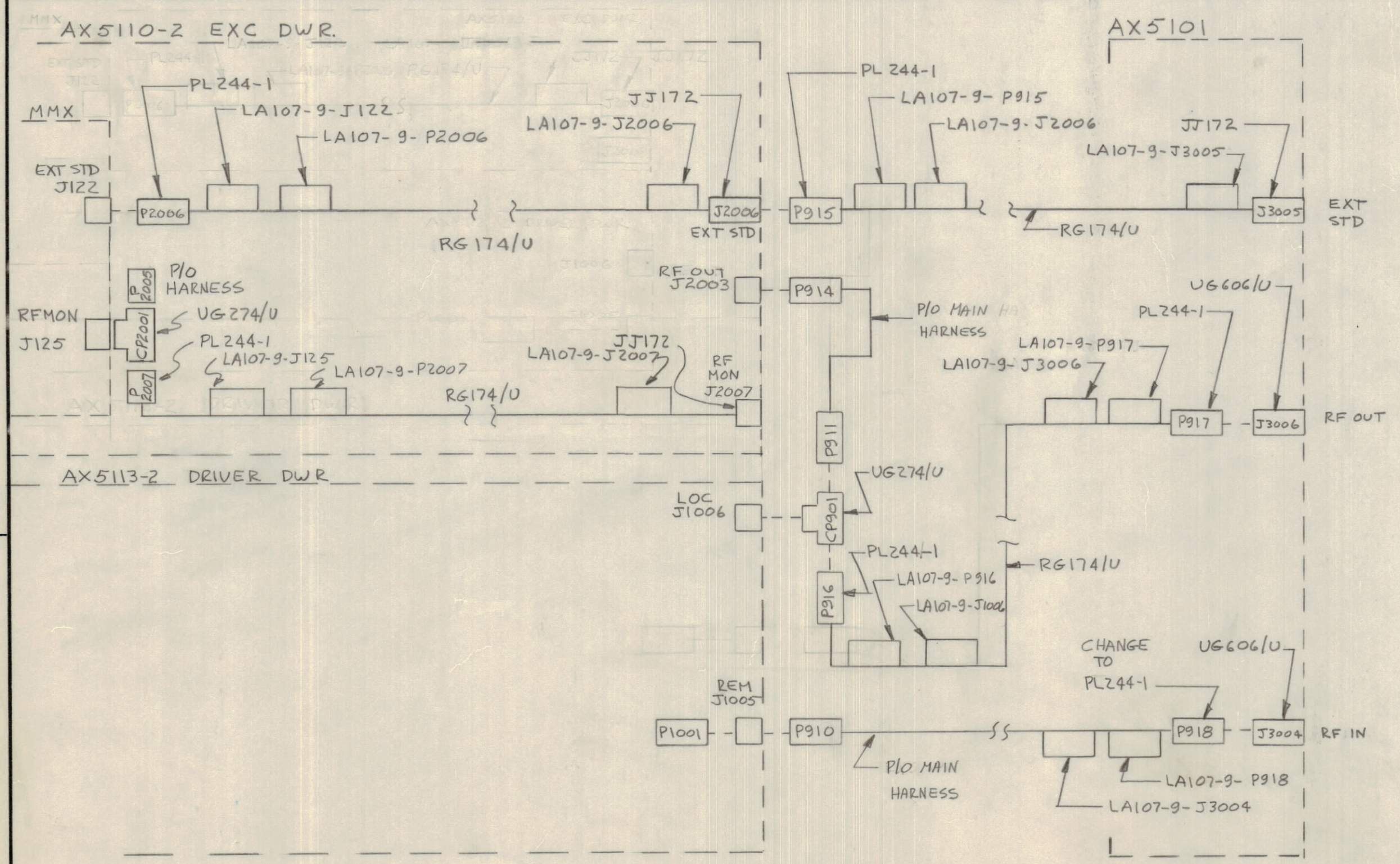
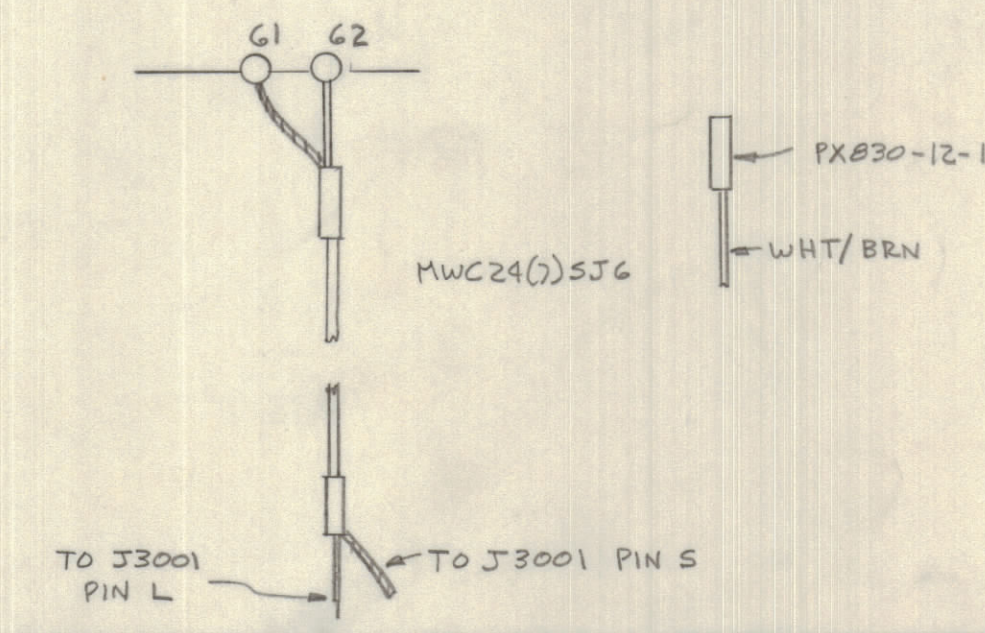
REVISIONS							
E.M.N.O.	DRAFT	CHKD	ZONE	LTR	DESCRIPTION	DATE	APPROVED
				X1	DELE LINE TRIP MOD	29 SEP 70	JPM
					ORIGINAL RELEASE FOR PRODUCTION	12/2/70	P.E.G.



1. REMOVE 2 WHT/BRN WIRES FROM A3002-E21. CONNECT TOGETHER, COVER WITH SINK TUBING & TIE BACK IN CABLE.
2. REMOVE 1 WHT/BRN WIRE FROM A3002-E60, INSULATE & TIE BACK IN CABLE.
3. CONNECT THE BLU WIRE TO A3002-21, CONNECT THE SHIELD TO A3002-20.
4. ADD MWC24(7)SJ6 WIRE FROM A3002-62 TO J3001-L. CONNECT THE SHIELD FROM A3002-61 TO J3001-S.



ALDC WIRING MODIFICATION



1	SYM 1200 (HFTM-10KJ)	BHA 453
QTY / UNIT	MODEL USED ON	ASS'Y NO.
APPLICATION		
CODE		
MATERIAL		
FINISH		

QTY. REQ.	ITEM	PART NO.	DESCRIPTION	SYMBOL
BUDGET				
LIST OF MATERIAL				
FINAL APPROVAL		DATE	THE TECHNICAL MATERIEL CORP.	
MECH. DES.		9 NOV 70	MAMARONECK, NEW YORK	
ELECT. DES.		DATE	INSTALLATION DRAWING	
CHECKED		9 NOV 70	CUSTOMER SPECIFICATION MODIFICATION PKG	
DRAWN		DATE	BHA 453	
MATERIAL		DATE	SIZE	CODE IDENT NO. DWG NO.
FINISH		14 SEP 70	D	82679 ID 390
SCALE			SHEET	OF