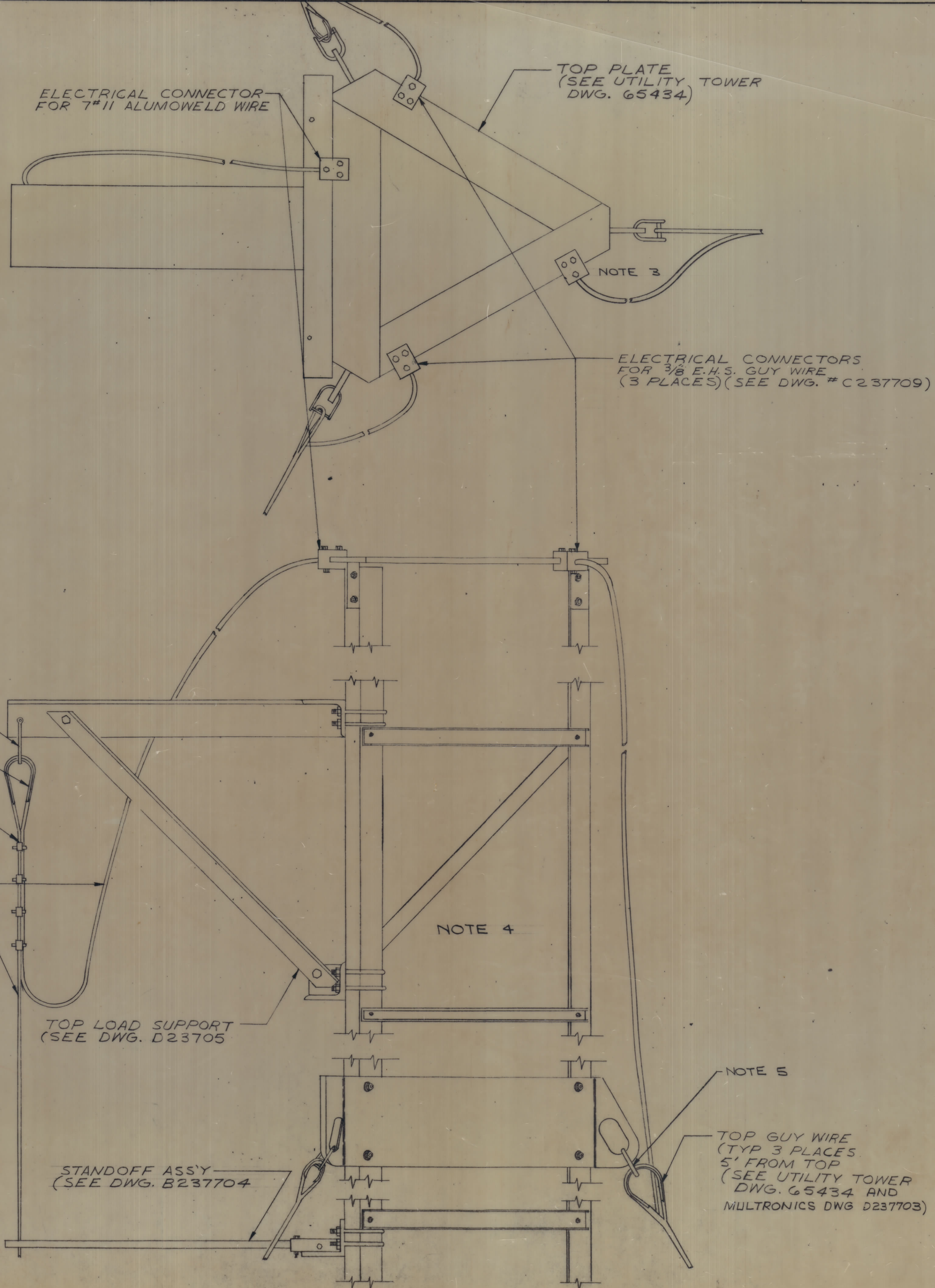


REVISIONS				
ZONE	SYM.	DESCRIPTION	DATE	APPROVAL
B	A	REF. DWG. NO. D237703 & B237704 WAS D237700	10-18-66	<i>[Signature]</i>
B		RELOCATED TOWER BRACKETS. ADDED: NOTES 3, 4, 5.	10-27-66	<i>[Signature]</i>



- NOTES**
1. ELECTRICAL CONNECTORS MUST BE FASTENED TO TOP PLATE OR TOWER LEGS TO INSURE PROPER ELECTRICAL CONTINUITY.
  2. REMOVE ALL PAINT ON AREAS WHERE ELECTRICAL CONNECTORS ARE TO BE FASTENED TO INSURE PROPER ELECTRICAL CONTINUITY.
  3. CONNECTOR MOUNTING POSITION MAY BE VARIED TO ACCOMMODATE BEACON MOUNTING IF NECESSARY.
  4. TOWER DETAIL NOT SHOWN TO SCALE.
  5. IF TOWER MFR SUPPLIES SHACKLE, ASSEMBLE AS SHOWN. IF NO SHACKLE SUPPLIED, ASSEMBLE THIMBLE AND PREFORM DIRECTLY TO GUY BRACKET.

REQD.	PART NO.	ITEM	DESCRIPTION	MATL. OR MFR.	MATL. SPEC. OR CAT. NO.	CKT. SYM.	UNIT WT.	ZONE
LIST OF MATERIAL								
UNLESS OTHERWISE SPECIFIED			SIGNATURE	DATE				
DIMENSIONS ARE IN INCHES			DR. C.B.	9-13-66				
TOLERANCES ON:			CHK. R. WELLER	9-15-66				
DEC. FRACT. ANG. RMS. FIN.			ENGR. R.V.G.	9-15-66				
MATERIAL:								
FINISH:								
D237700								
USED ON NEXT ASSY.								
PROJ. APPD.								
SCALE: NONE			JOB # 237-7			SHEET 3 OF 4		

**TOP DETAIL**

T.M.C. KIT #312  
FOR UTILITY TOWER  
TYPE "170 K.D."

THE TECHNICAL MATERIE, CORP.  
700 FENIMORE ROAD  
MAMARONECK, N. Y.

**ID 379**

D237702 REV. B