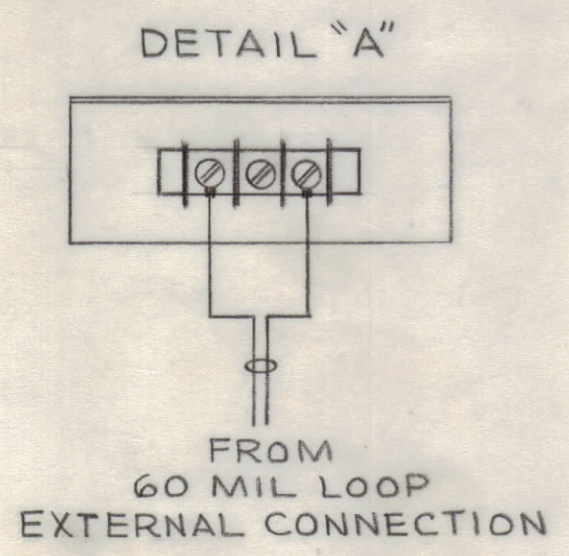
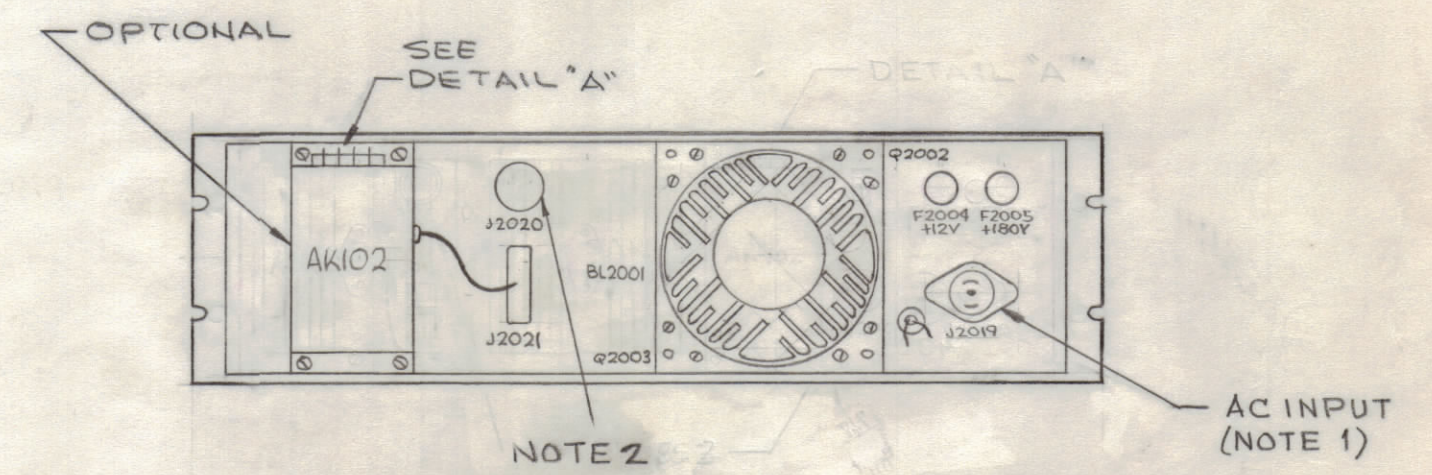
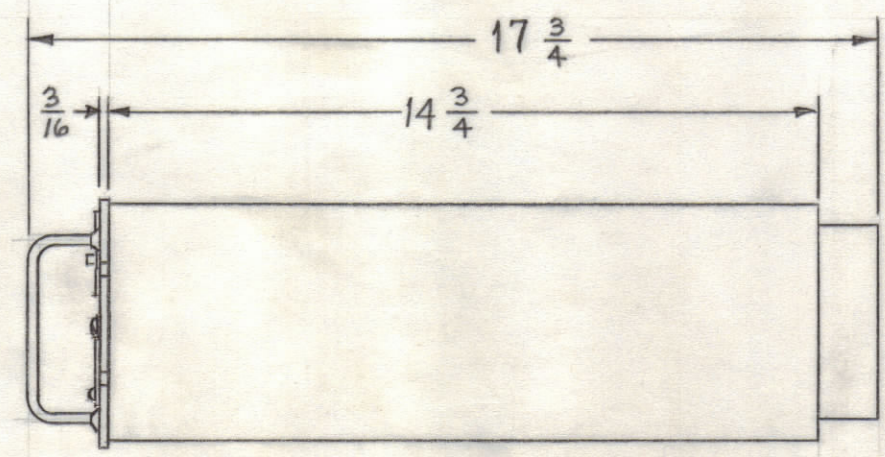
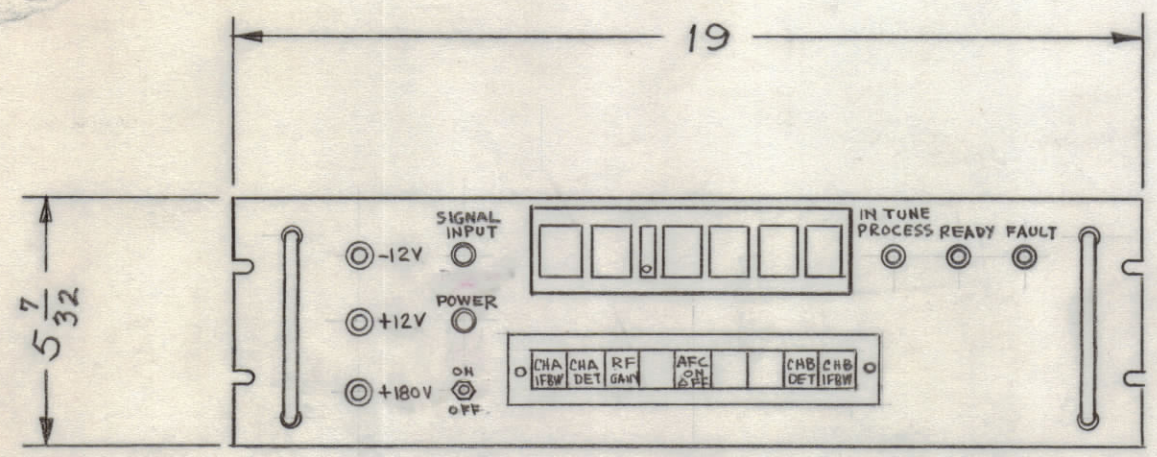


| REVISIONS | | | | | | |
|-----------|------|--------------------------------|----------|-----------|-------|-----------|
| SYM | ZONE | DESCRIPTION | DATE | E.M.N.NO. | DRAFT | CHKD APPD |
| Ø | | ORIGINAL RELEASE | 2/15/66 | | | |
| A | | REAR VIEW REVISED; NOTE 3 DELE | 12.20.66 | 17544 | WTD | JTB |

TECHNICAL DATA

POWER INPUT - 100 WATTS
 VOLTAGE - 115/230 VAC
 PHASE - 1 Ø
 FREQUENCY - 50/60 CPS
 HEAT DISSIPATION - 100 WATTS 340 BTU/HR
 AMBIENT TEMP RANGE - 0° TO 50° C
 RELATIVE HUMIDITY - 0 TO 90%
 WEIGHT - 50 lbs.



- NOTE:
- 1- ACCABLE SUPPLIED AS LOOSE ITEM.
 - 2- TO AUXILIARY PANEL THAT PROVIDES VISUAL INDICATION OF UP TO 16 EQUIPMENTS WHEN ONE INDICATOR IS USED TO MONITOR MULTIPLE REMOTE TUNED EQUIPMENT.(THIS FEATURE IS OPTIONAL)
 - 3- P2020 MATING PLUG SUPPLIED AS LOOSE ITEM.

MAXIMUM ALLOWABLE TOLERANCES HAVE BEEN DETERMINED AND ANY DEVIATIONS WILL BE CAUSE FOR REJECTION.

| QTY REQ | ITEM | PART NO. | DESCRIPTION | SYMBOL | | | |
|---|------|---|--|---------------|-----------|-------------------|------------|
| BILL OF MATERIAL | | | | | | | |
| UNLESS OTHERWISE SPECIFIED DIMENSIONS ARE IN INCHES TOLERANCES ON FRACTIONS DECIMALS ANGLES ±1/64 ±.005 ±1/2° | | FINAL APPROVAL <i>M. Tantillo</i> DATE 2/15/66 | THE TECHNICAL MATERIEL CORP. MAMARONECK, NEW YORK INDICATOR, FREQUENCY TMC MODEL RTIH-1 | | | | |
| MATERIAL | | MECH. DES. <i>J.C. Santos</i> DATE 2/15/66 | | | | | |
| FINISH | | ELECT. DES. <i>J.C. Santos</i> DATE 2-11-66 | | | | | |
| | | CHECKED M TANTILLO DATE 2-11-66 | | | | | |
| | | DRAWN M TANTILLO DATE 2-11-66 | APPROVED FOR BUSHIPS | CODE 82679 | SIZE C | DWG. NO. ID354 | ISSUE A |
| | | CONTRACT NO. | SCALE NONE | SHEET OF | | | |