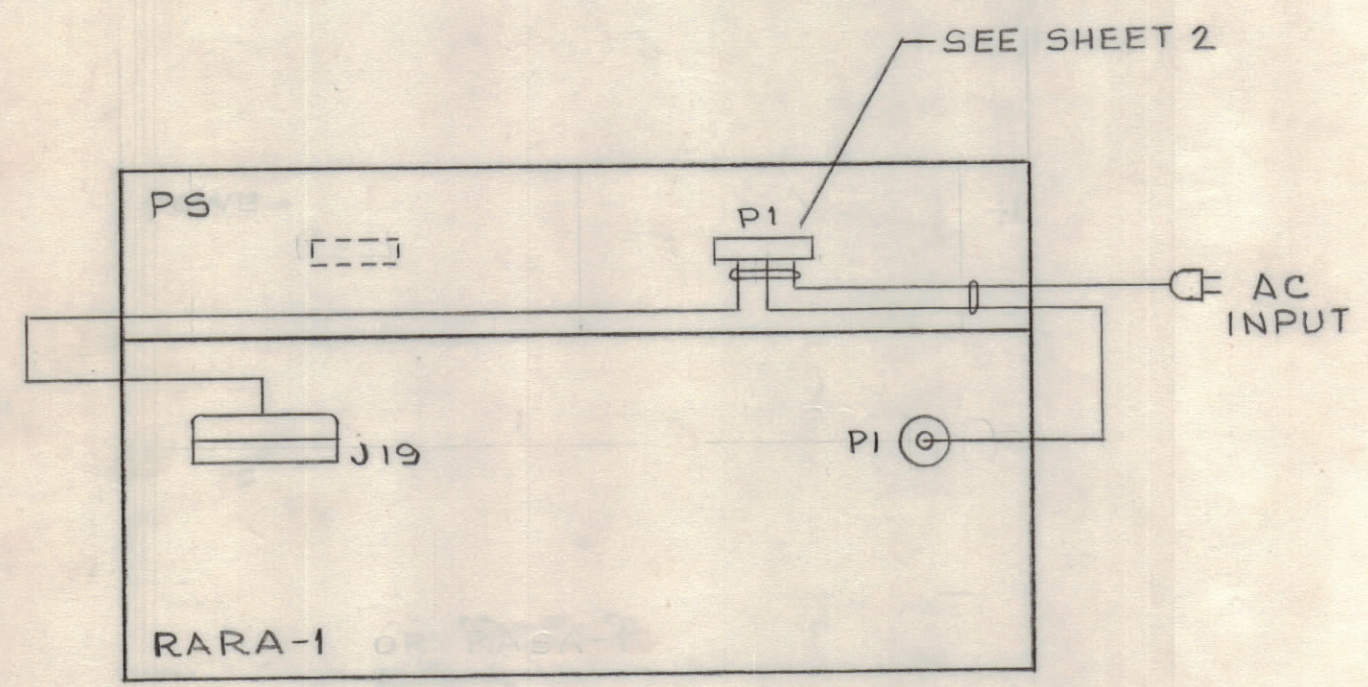


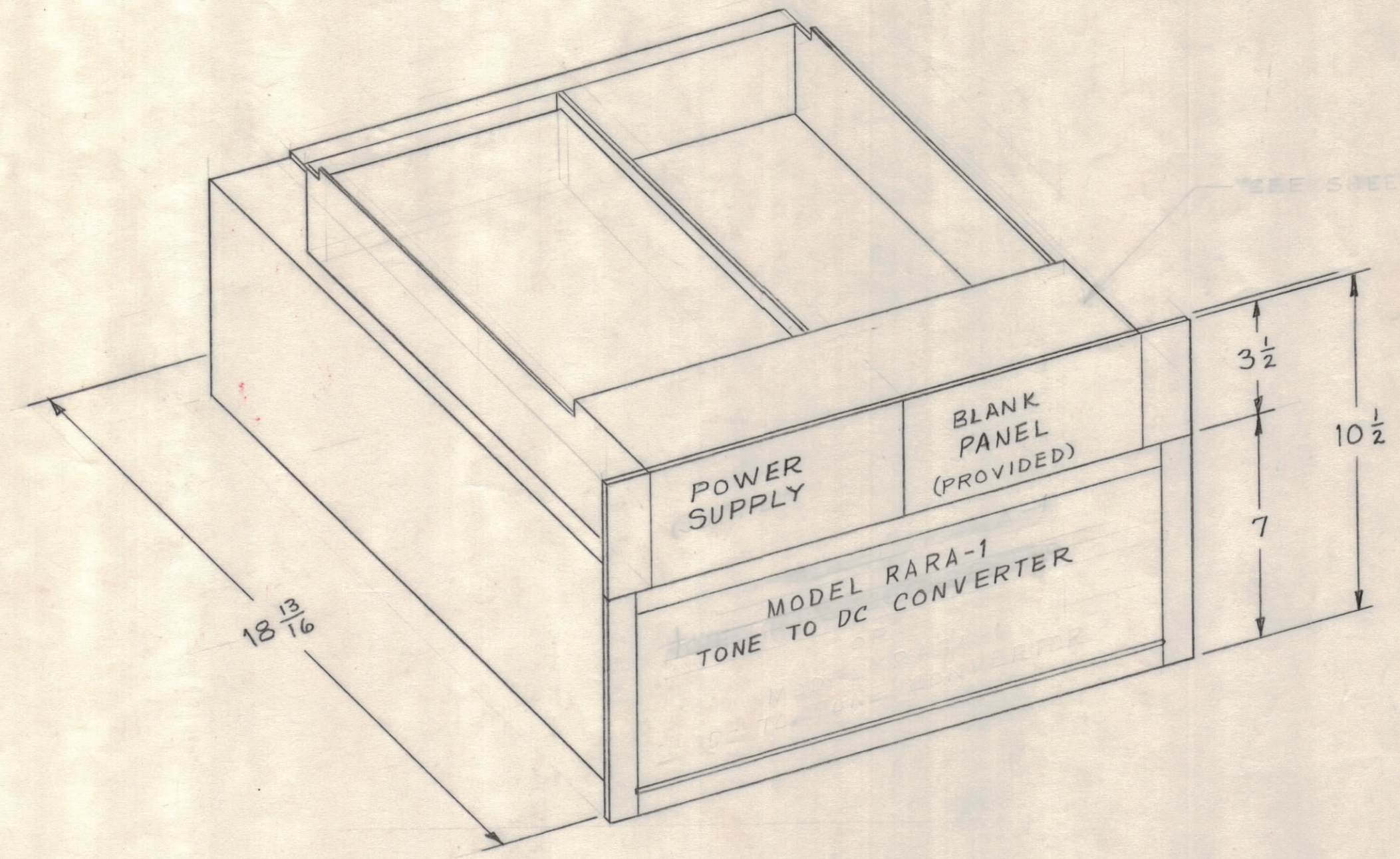
REVISIONS						
SYM	ZONE	DESCRIPTION	DATE	E.M.N.O.	DRAFT	CHKD APPD
A		REVISED	9/27/65		MJT	
B		DELETED NOTE 1. SEE SH3	6/1/66	16315	C.H.	<i>Q/B</i> <i>JLL</i>

TECHNICAL DATA

POWER INPUT - 70 WATTS
 VOLTAGE - 115 / 230 VAC (230V OPERATION SEE NOTE 1)
 PHASE - SINGLE
 FREQUENCY - 50 / 60 CPS
 HEAT DISSIPATION - 70 WATTS, BTU 24/HR
 AMBIENT TEMP. RANGE - 0° TO 50°C
 RELATIVE HUMIDITY - 0 TO 90 %
 WEIGHT - 36 lbs.



INTERCONNECTION DIAGRAM

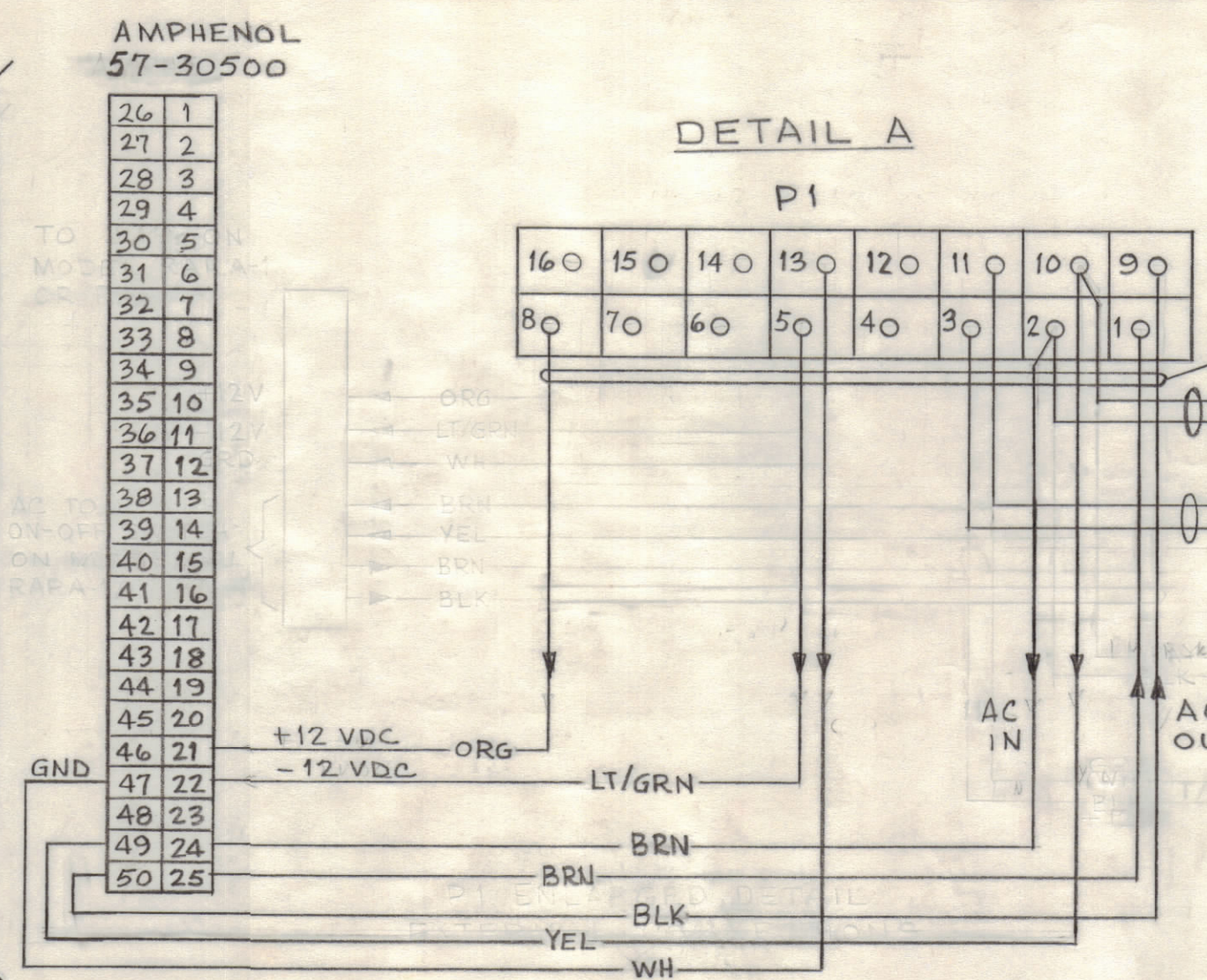


NOTE:
 1- FOR 230V OPERATION REMOVE JUMPERS ON TERMINALS 1, 2, 4 AND 3 & 4, CONNECT JUMPER TO TERMINALS 2 AND 3

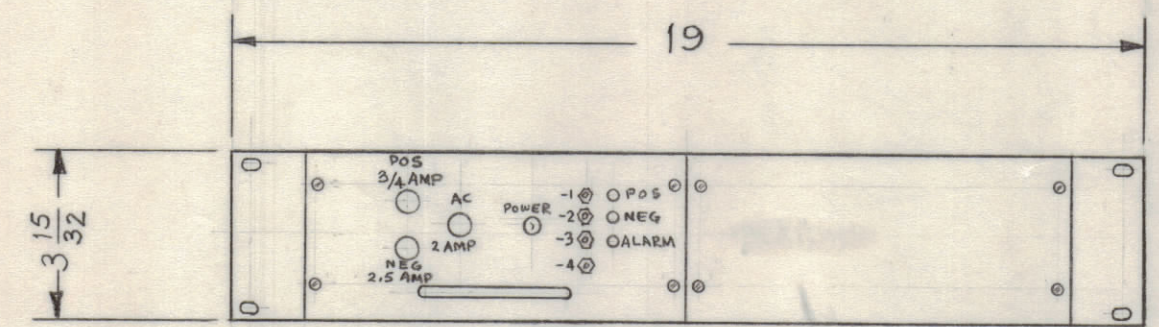
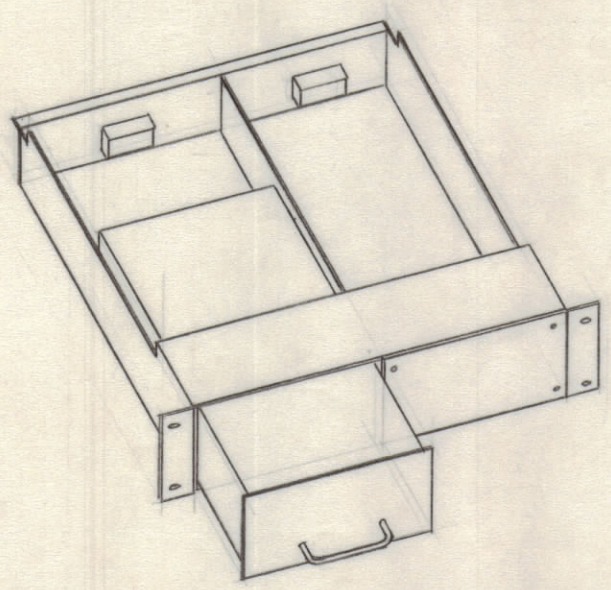
MAXIMUM ALLOWABLE TOLERANCES HAVE BEEN DETERMINED AND ANY DEVIATIONS WILL BE CAUSE FOR REJECTION.

QTY REQ	ITEM	PART NO.	DESCRIPTION	SYMBOL
BILL OF MATERIAL				
THE TECHNICAL MATERIEL CORP. MAMARONECK, NEW YORK				
CONVERTER-POWER SUPPLY GROUP, RECEIVE				
SUGGESTED EQUIPMENT LAYOUT AND RECOMMENDATIONS FOR EQUIPMENT SUPPLY				
FINAL APPROVAL <i>B. R. Ray</i> DATE 5/25/65 MECH. DES. <i>R. M. Ray</i> DATE 5/25/65 ELECT. DES. <i>R. E. Dawsey</i> DATE 5-25-65 CHECKED <i>H. Johnson</i> DATE 5-19-65 DRAWN M. TANTILLO DATE 5-14-65			CODE	ISSUE
MATERIAL FINISH			82679 C	B
APPROVED FOR BUSHIPS CONTRACT NO. N600(63133-11-126)63002			SIZE	SCALE
			DWG. NO.	SHEET 1 OF 5
			ID-331	
			NONE	

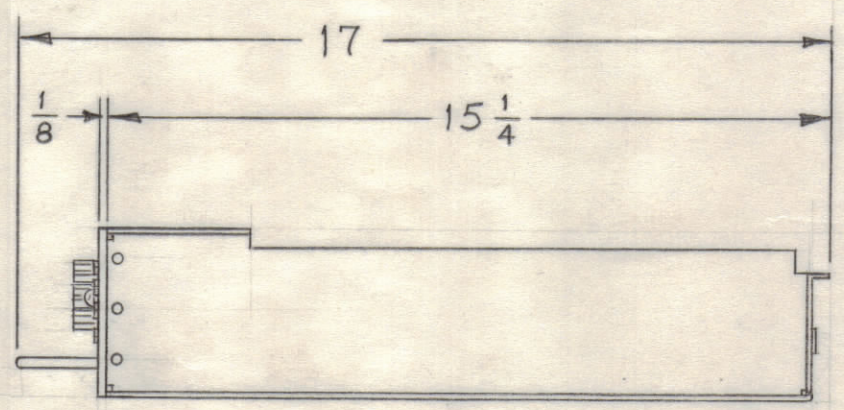
REVISIONS						
SYM	ZONE	DESCRIPTION	DATE	E.M.N.NO	DRAFT	CHKD APPD
A		REVISED	9/27/65		MJT	
B		SEE SHTS 1 & 3.	6/1/66	16315	C.H.	<i>[Signature]</i>



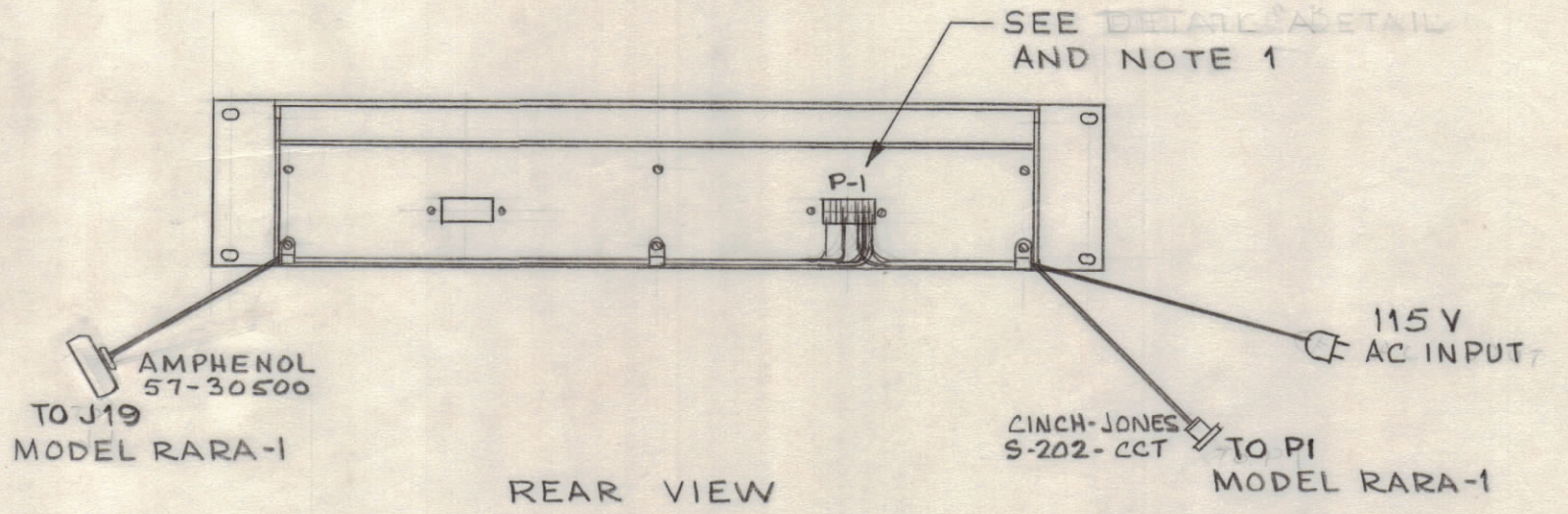
MATES WITH AMPHENOL 57-40500 SEE SHEET 3 DETAIL B



FRONT VIEW



RIGHT SIDE VIEW



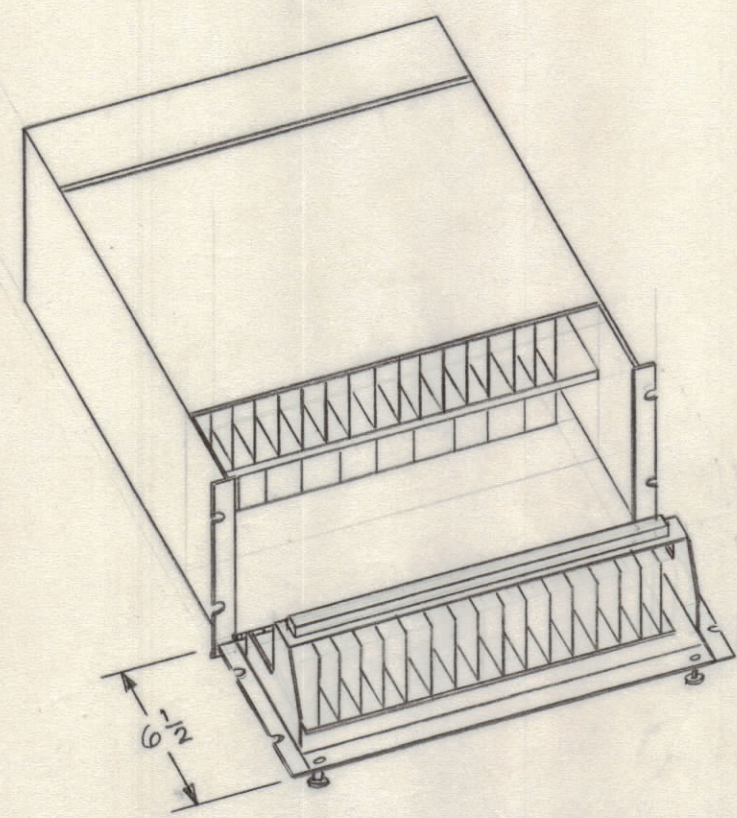
REAR VIEW

NOTE:
1- CABLE HARNESS PART OF SHELF ATTACHED TO P1, DETAIL "A"(THIS SHEET) SHOWS CABLING PROVIDED AS PART OF THE EQUIPMENT.
2-

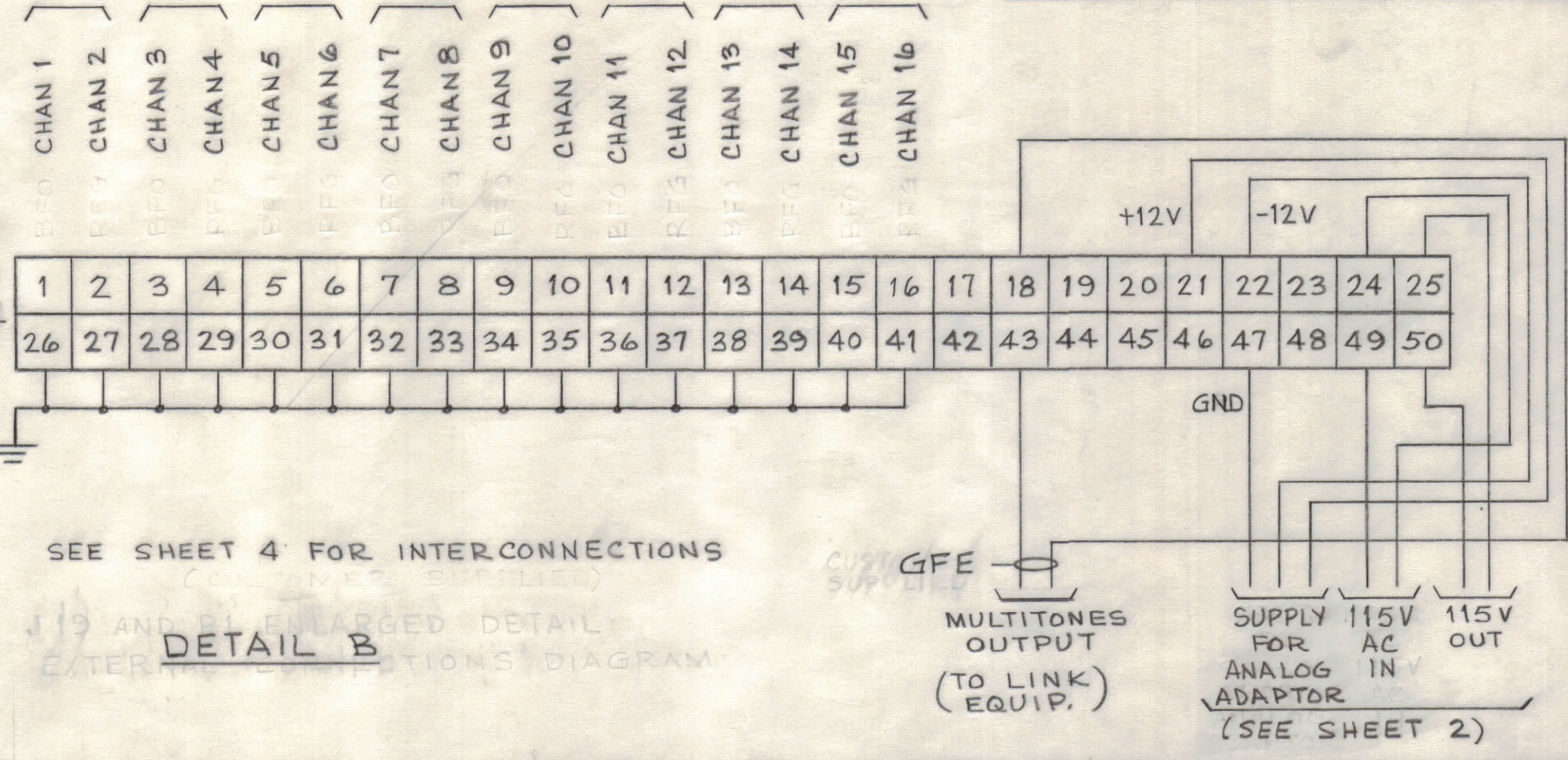
MAXIMUM ALLOWABLE TOLERANCES HAVE BEEN DETERMINED AND ANY DEVIATIONS WILL BE CAUSE FOR REJECTION.

QTY REQ	ITEM	PART NO.	DESCRIPTION	SYMBOL
BILL OF MATERIAL				
THE TECHNICAL MATERIEL CORP. MAMARONECK, NEW YORK				
CONVERTOR-POWER SUPPLY GROUP-RECEIVE POWER SUPPLY				
OUTLINE DIMENSION AND PART CABLING DETAIL FOR DETAIL				
UNLESS OTHERWISE SPECIFIED DIMENSIONS ARE IN INCHES TOLERANCES ON FRACTIONS DECIMALS ANGLES $\pm 1/64$ $\pm .005$ $\pm 1/2^\circ$			FINAL APPROVAL <i>[Signature]</i> DATE 5/25/65 MECH. DES. <i>[Signature]</i> DATE 5/25/65 ELECT. DES. <i>[Signature]</i> DATE 5-25-65 CHECKED <i>[Signature]</i> DATE 5-19-65 DRAWN M. TANTILLO DATE 5-17-65	CODE 82679 SIZE C DWG. NO. ID-331 ISSUE B
APPROVED FOR BUSHIPS CONTRACT NO. N600(63133-11-126)63002			SCALE NONE WGT. 11 LBS SHEET 2 OF 5	

REVISIONS							
SYM	ZONE	DESCRIPTION	DATE	E.M.N.O.	DRAFT	CHKD	APPD
A		REVISED	9/27/65		MJT		
B		6 31/32 DIM. WAS 7. SEE SH1	6/1/66	16315	C.H.		



J19
AMPHENOL
57-40500
(MATES WITH
AMPHENOL
57-30500
SEE SHEET 2)



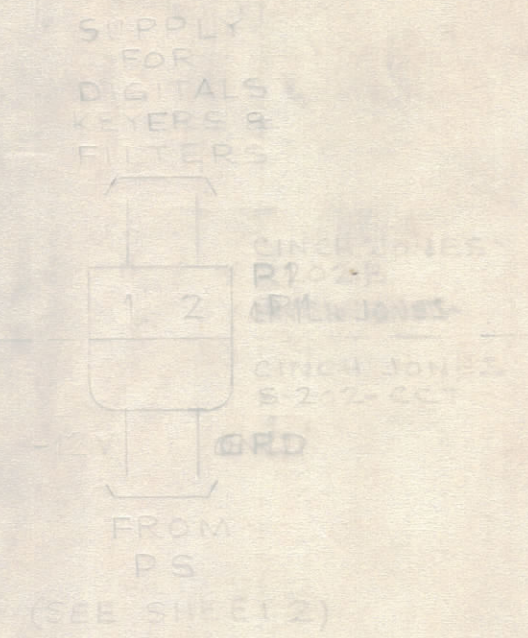
SEE SHEET 4 FOR INTERCONNECTIONS

J19 AND BY ENLARGED DETAIL
EXTERNAL CONNECTIONS DIAGRAM

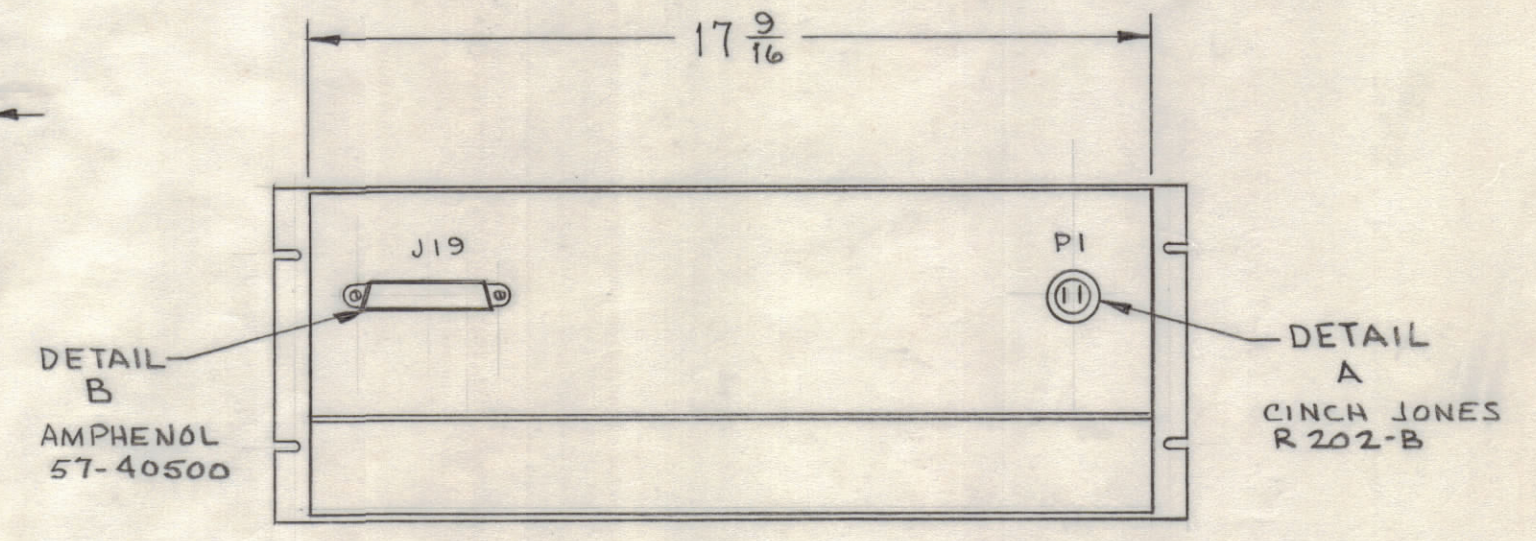
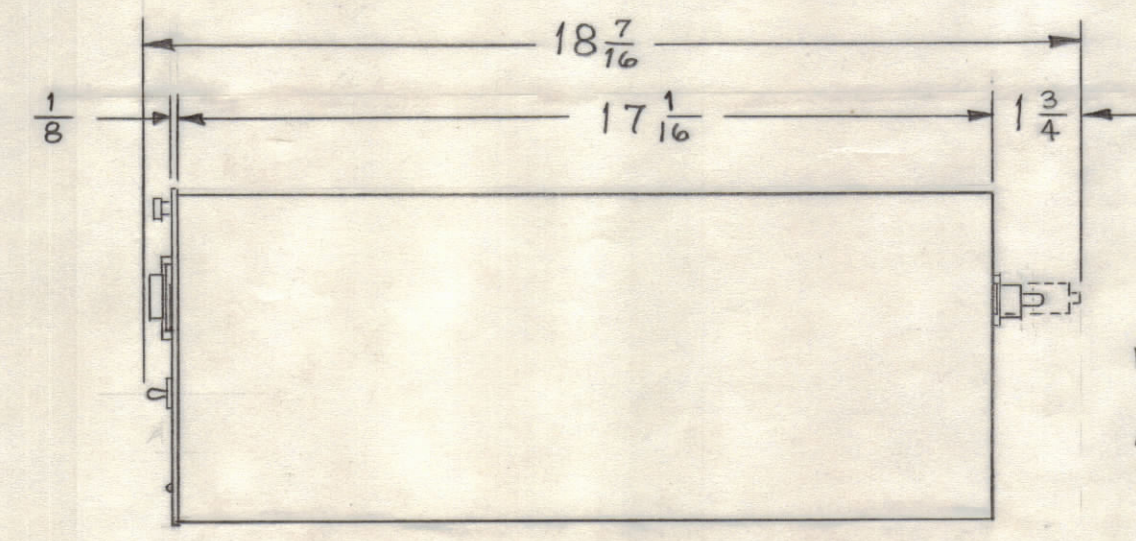
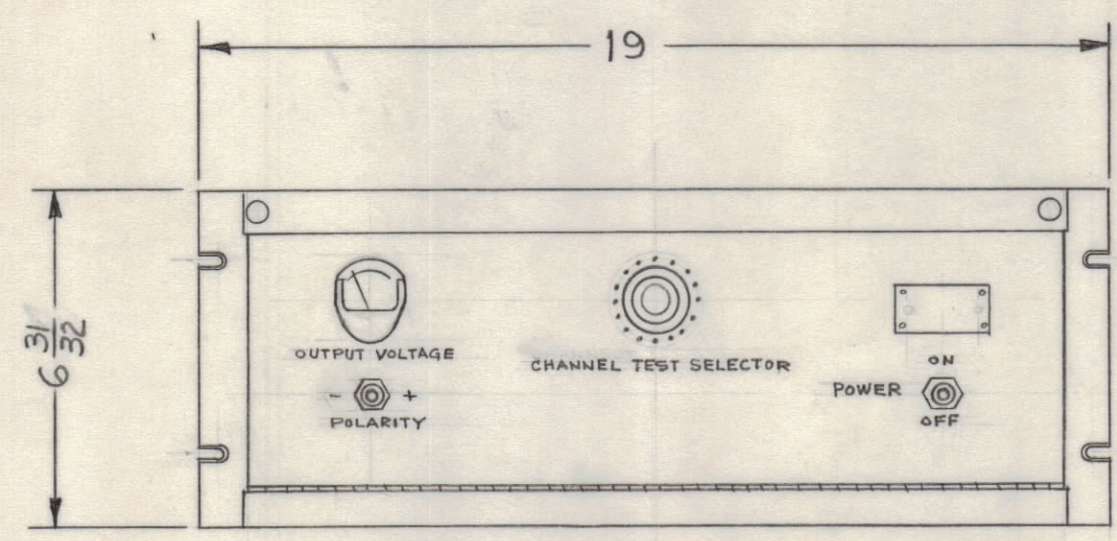
DETAIL B

GFE
MULTITONES
OUTPUT
(TO LINK
EQUIP.)

SUPPLY 115V
FOR AC
ADAPTOR
(SEE SHEET 2)



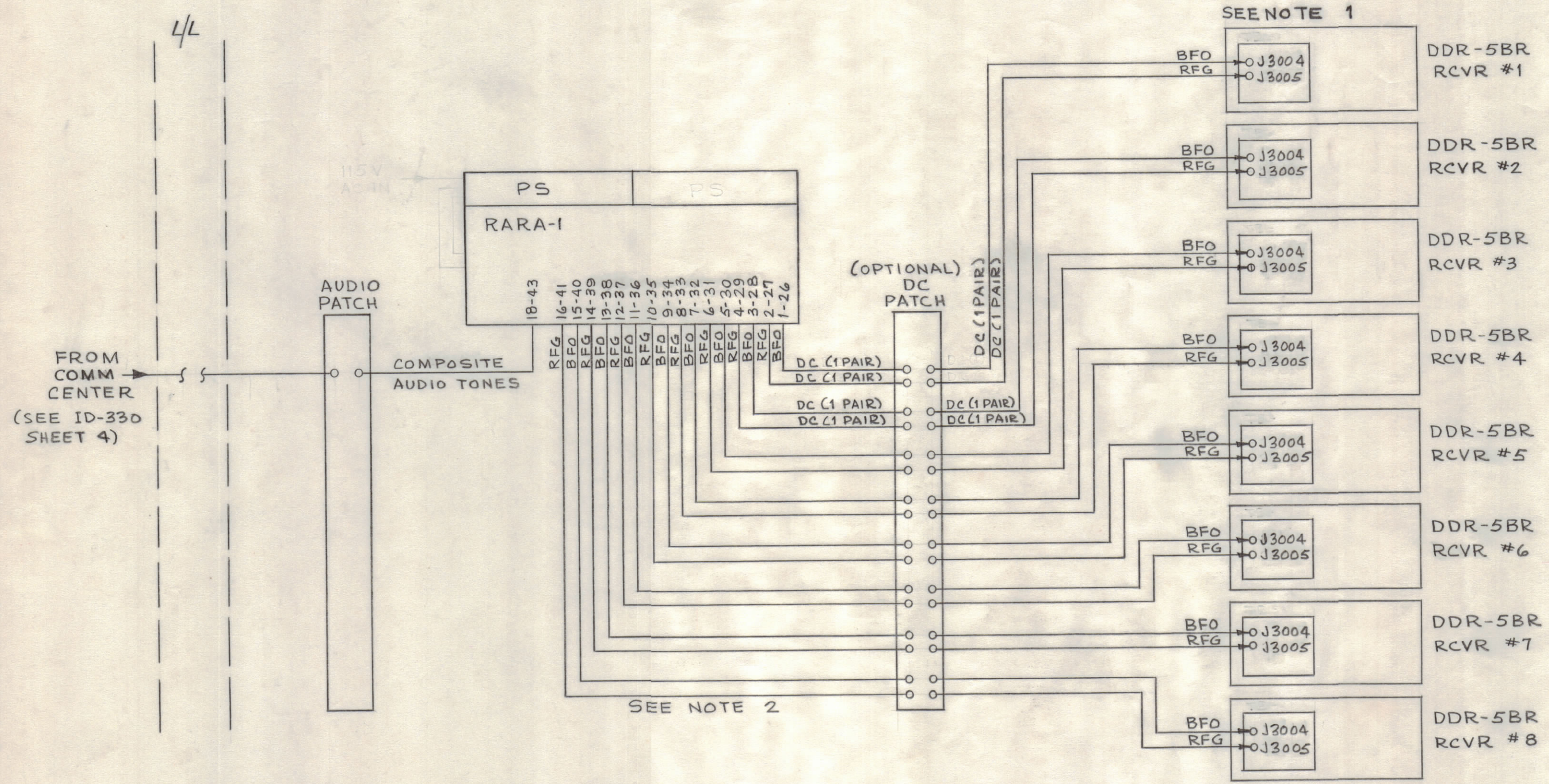
DETAIL A



QTY REQ	ITEM	PART NO.	DESCRIPTION	SYMBOL
BILL OF MATERIAL				
THE TECHNICAL MATERIEL CORP. MAMARONECK, NEW YORK				
UNLESS OTHERWISE SPECIFIED DIMENSIONS ARE IN INCHES TOLERANCES ON FRACTIONS DECIMALS ANGLES ±1/64 ±.005 ±1/2°			CONVERTOR-POWER SUPPLY GROUP, RECEIVE	
MATERIAL			CONVERTOR, MODEL RARA-1	
FINISH			OUTLINE DIMENSION AND CABLES DETAIL	
APPROVED FOR BUSHIPS			CODE	SIZE
CONTRACT NO.			82679	C
N600(63133-11-126)63002			SCALE	NONE
			WGT.	25 LBS
			SHEET	3 OF 5
			DWG. NO.	ID-331
			ISSUE	B

MAXIMUM
ALLOWABLE TOLERANCES HAVE BEEN
DETERMINED AND ANY DEVIATIONS
WILL BE CAUSE FOR REJECTION.

REVISIONS							
SYM	ZONE	DESCRIPTION	DATE	E.M.N.NO.	DRAFT	CHKD	APPD
A		REVISED	9/27/65		MJT		
B	E4 A7	ADDED (OPTIONAL) TO DC PATCH NOTE 2 EXPANDED	1/6/66		MJT		JL



NOTE:

- SEE ID-329 SHEET 4 FOR DDR-5BR INTERCONNECT.
- ALL CABLING AND PATCH FACILITIES ARE GFE. SHIELDED CABLING OR COAXIAL CABLING, SUCH AS RG-174, RG-58, ETC., IS RECOMMENDED IN ORDER TO PREVENT EXTRANEIOUS SIGNAL PICK-UP.

MAXIMUM ALLOWABLE TOLERANCES HAVE BEEN DETERMINED AND ANY DEVIATIONS WILL BE CAUSE FOR REJECTION.

QTY REQ	ITEM	PART NO.	DESCRIPTION	SYMBOL
BILL OF MATERIAL				
UNLESS OTHERWISE SPECIFIED DIMENSIONS ARE IN INCHES TOLERANCES ON FRACTIONS DECIMALS ANGLES ±1/64 ±.005 ±1/2°			THE TECHNICAL MATERIEL CORP. MAMARONECK, NEW YORK	
MATERIAL			CONVERTER-POWER SUPPLY GROUP, RECEIVE	
FINISH			SIMPLIFIED SYSTEM DIAGRAM	
APPROVED FOR BUSHIPS			CODE	SIZE
CONTRACT NO. N600 (63133-11-126) 63002			82679	C
			DWG. NO.	ISSUE
			ID-331	B
			SCALE NONE	SHEET 4 OF 5

REVISIONS							
SYM	ZONE	DESCRIPTION	DATE	E.M.N.NO.	DRAFT	CHKD	APPD
B		SEE SHTS 1 & 3.	6/1/66	16315	C.H.	J.B.	J.P.

INSTALLATION MATERIAL LIST

PC NO	QTY	DESCRIPTION	NAVY OR COML DESIG	FURNISHED BY (GFE OR CFM)
1	1	CONVERTER - POWER SUPPLY GROUP CONSISTS OF:		CFM
2	1	CONVERTER, TONE TO DC	AX-284	CFM
3	1	POWER SUPPLY DRAWER	AX-283	CFM
4	1	POWER SUPPLY	AP-127	CFM
5	8	SCREW, MACHINE	SCBP1032BN8	CFM
6	8	WASHER, FIBER, FLAT	WA-101-5	CFM
7	AS REQD	TWISTED-SHIELDED PAIR, RADIO FLEXIBLE CABLE	TTRS	GFE

QTY REQ	ITEM	PART NO.	DESCRIPTION	SYMBOL
BILL OF MATERIAL				
UNLESS OTHERWISE SPECIFIED DIMENSIONS ARE IN INCHES TOLERANCES ON FRACTIONS DECIMALS ANGLES $\pm 1/64$ $\pm .005$ $\pm 1/2^\circ$			FINAL APPROVAL <i>[Signature]</i> DATE 3/4/66 MECH. DES. <i>[Signature]</i> DATE ELECT. DES. DATE CHECKED DATE DRAWN M TANTILLO 9-22-65 APPROVED FOR BUSHIPS CONTRACT NO.	
MATERIAL			THE TECHNICAL MATERIEL CORP. MAMARONECK, NEW YORK CONVERTER - POWER SUPPLY GROUP, RECEIVE	
FINISH			CODE 82679 SIZE C DWG. NO. ID-331	ISSUE B
			SCALE NONE	SHEET 5 OF 5

MAXIMUM ALLOWABLE TOLERANCES HAVE BEEN DETERMINED AND ANY DEVIATIONS WILL BE CAUSE FOR REJECTION.