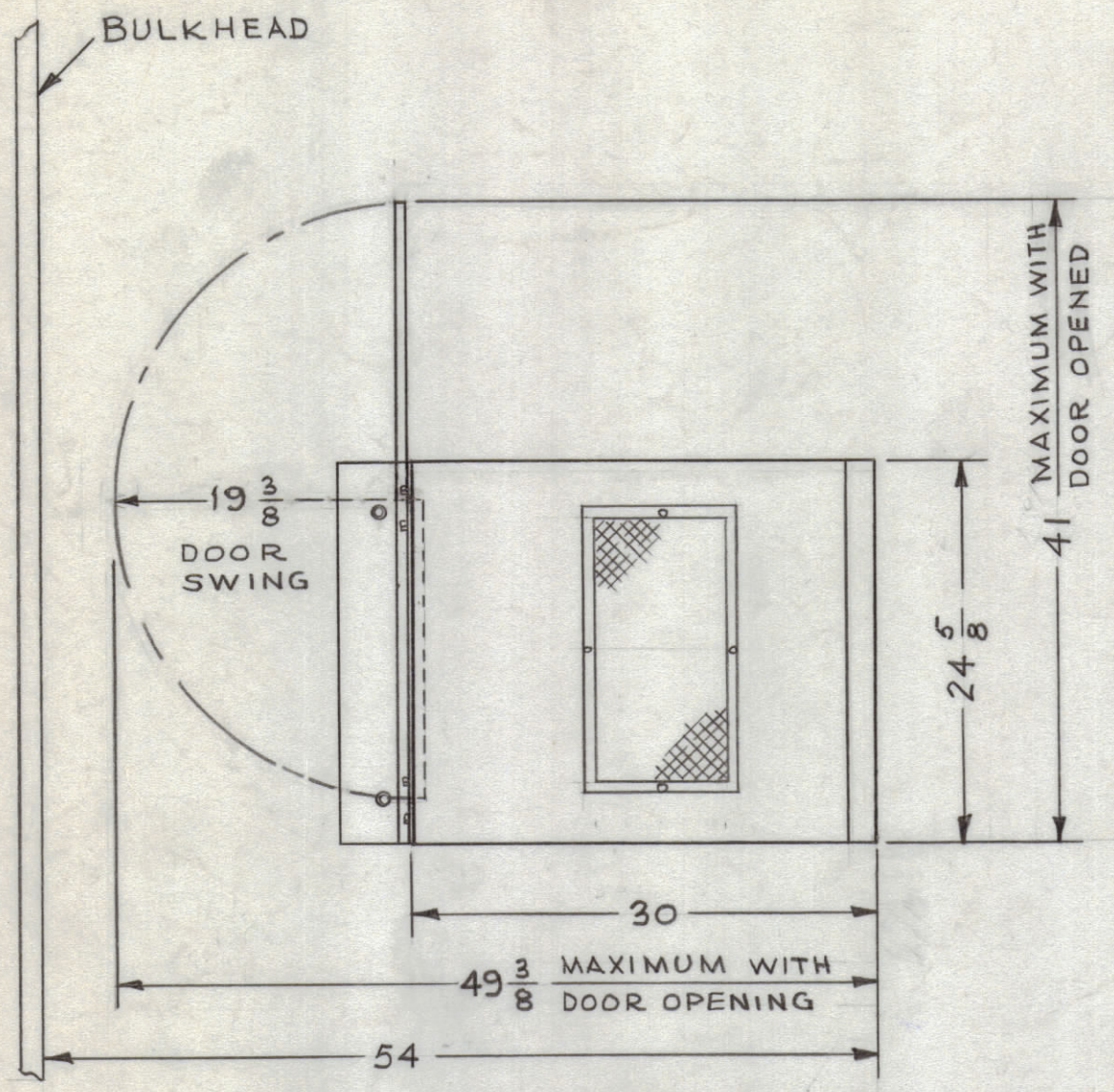
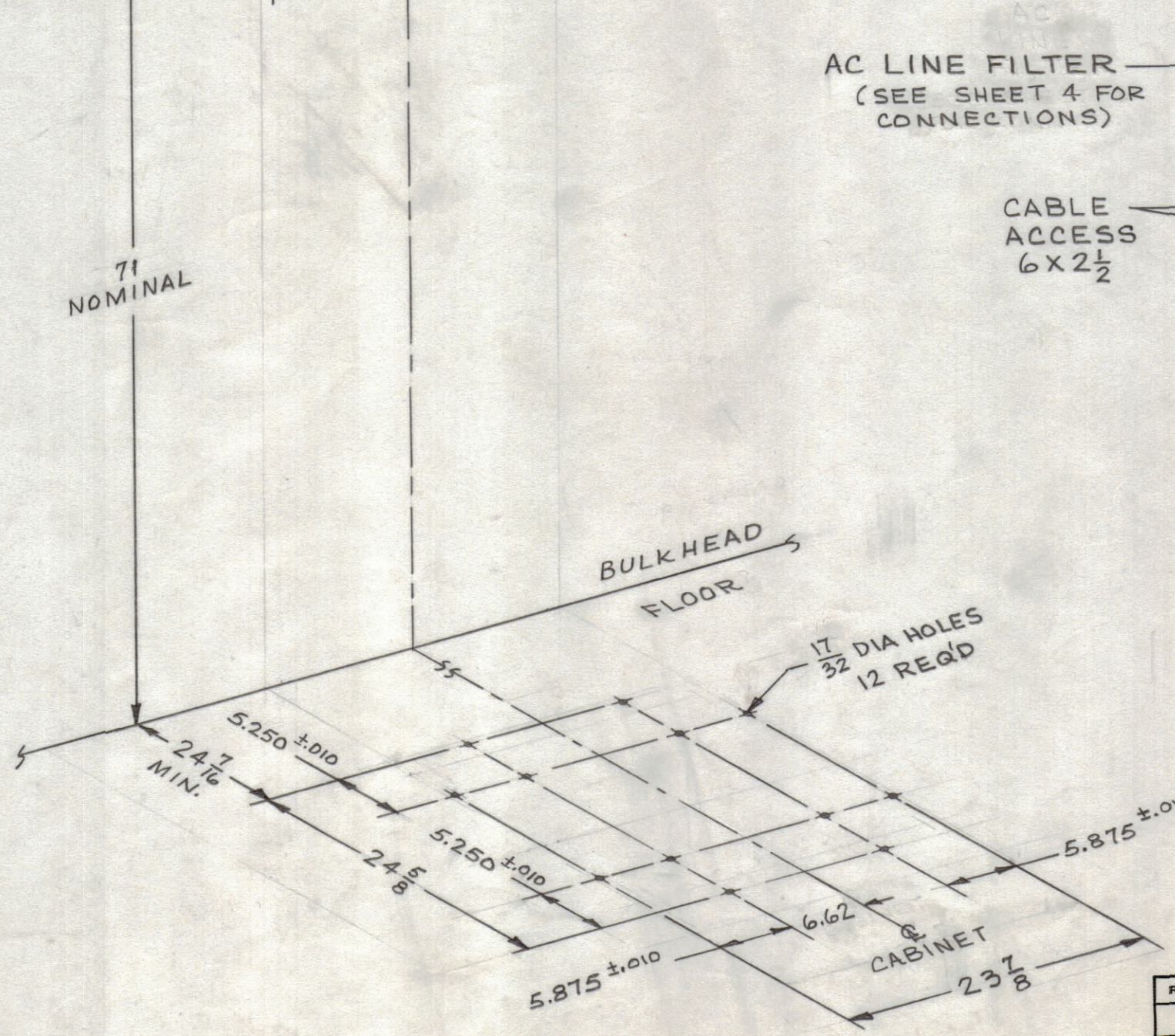
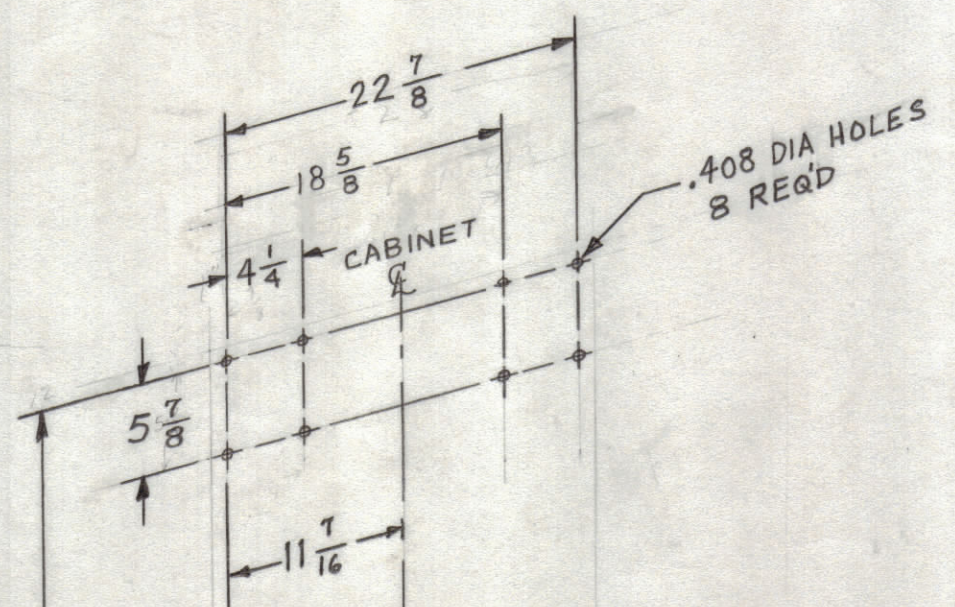


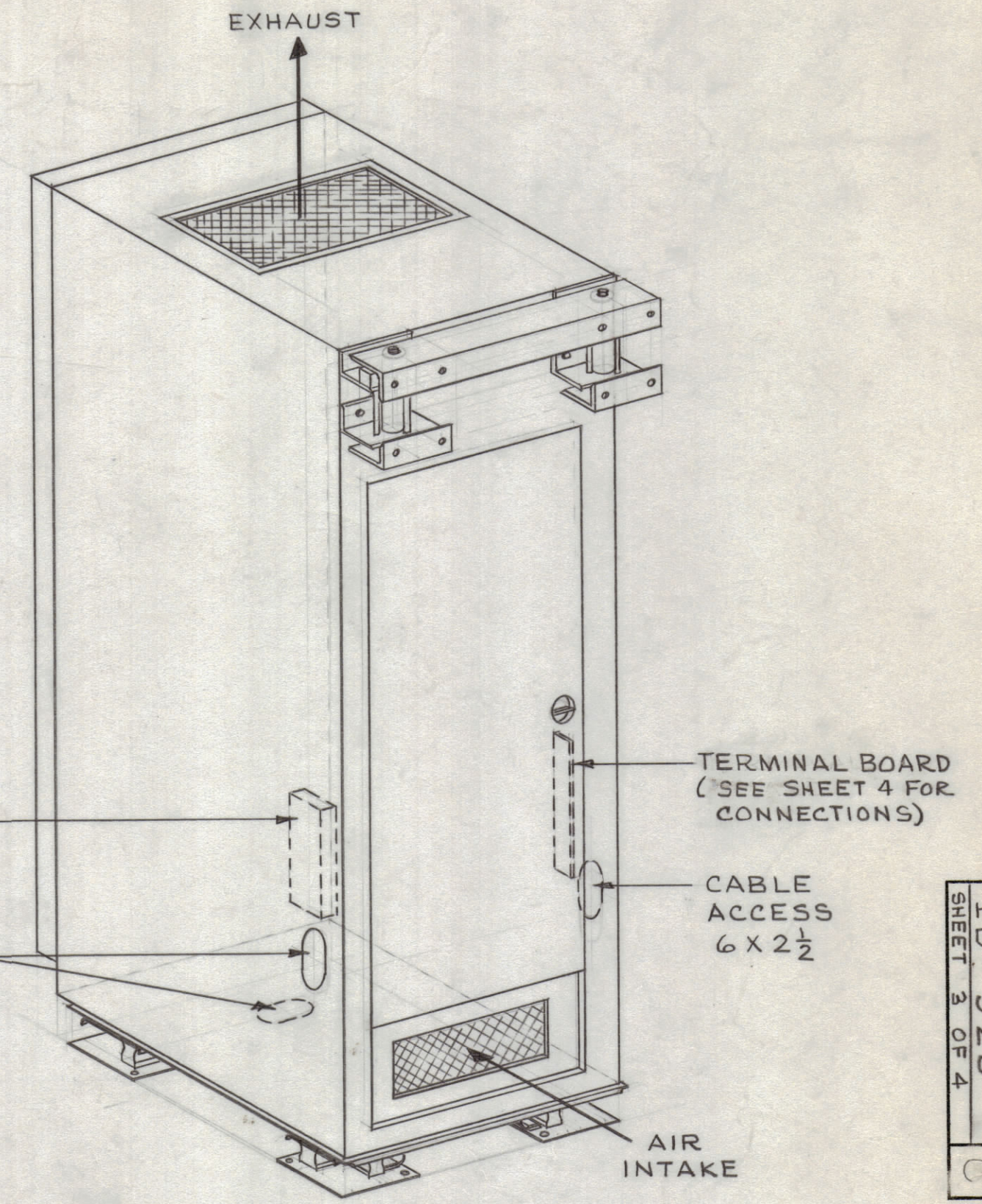
REVISIONS							
ZONE	SYM	DESCRIPTION	DATE	E.M.N. NO.	DRAFT	CHKD	APPD
	Ø	ORIGINAL RELEASED FOR PRODUCTION	4-15-65			MJT	
	A	ADDED .406 DIA., 17/32 DIA., .406, 6.62 DIM TO INSTALL. PLAN	4/20/65	13901		MJT	
	B	SEE SHEET NO 1	4-27-65	14476		DVU	
	C	SEE SHEET 4 OF 4	5/24/65	14633		HVV	



DOOR CLEARANCE REQUIREMENTS
TOP VIEW



SHOCK MOUNTING
INSTALLATION PLAN



ID-323
SHEET 3 OF 4

REQ'D.	ITEM	PART NUMBER	DESCRIPTION	SYMBOL
LIST OF MATERIAL				
MATERIAL		THE TECHNICAL MATERIEL CORP. MAMARONECK, NEW YORK		
FINISH		TITLE INSTALLATION DRAWING - MODEL DDR-5K OUTLINE & DIMENSIONAL DATA		
UNLESS OTHERWISE SPECIFIED DIMENSIONS ARE IN INCHES AND INCLUDE CHEMICALLY APPLIED OR PLATED FINISHES		DRAWN M. J. TANTILLO	DATE 4-13-65	FINAL APPROVAL
DECIMALS .X ± .05 .XX ± .01 .XXX ± .005		CHECKED	DATE	DATE
FRACTIONS ± 1/64 ANGLES ± 0° 30'		ELECT. DES.	DATE	DATE
TOLERANCES		MECH. DES.	DATE	DATE
ID-323				C
SHEET 3 OF 4				REV. LTR.

Q'TY./UNIT	MODEL USED ON	ASS'Y. NO.
SCALE	CODE	

THE CONTENTS OF THIS DRAWING ARE THE EXCLUSIVE PROPERTY OF THE TECHNICAL MATERIEL CORP. ITS UNAUTHORIZED USE OR REPRODUCTION IN WHOLE OR IN PART IS STRICTLY FORBIDDEN.

NOTES