

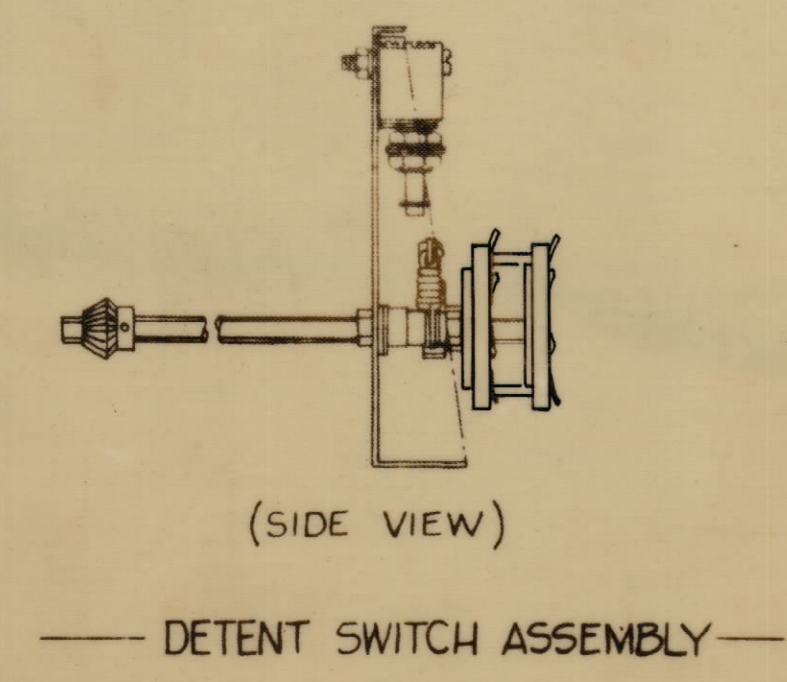
WS-131 WIRING DETAIL (S908 A & B)  
AS VIEWED FROM FRONT OF TRANSMITTER

CONNECTION LEGEND

TUBING AND/OR WIRE BUSS	DESCRIPTION
(1) CA-412-3-13.00	- S903(EMERG) to J905
(1) CA-412-23-6.00	- S903(WIPER) to DC900
(1) CA-412-6-5.50	- S903(TUNE) to R911, 12, 13
(1) CA-412-17-5.00	- DC900 to C949

STRAPS	DESCRIPTION
(1) MS-202-24-7.25	- S903(OPER) to C916 (OUTBAL)
(2) MS-202-5-5.62	- R911 to 12, 912 to 13
(1) MS-202-36-4.62	- C949 to C928 (PA LOAD)
(1) MS-2535	- S903 (OPER) to F.T.
(1) MS-202-27-2.50	- L907 to S903 (EMERG.)



C	STRAP MS 202-36-4.62 WAS MS202-36-8.62	1-20-67	17829		
B	ON PICT. JJ177 WAS JJ137, WD MODEL GPT-10K(M DELE.	11-20-64	12958	RF	
A	ON PICT. GEAR ASSY DETAIL ENLARGED	9.4.64	12240	ASB	
O	ORIGINAL RELEASE FOR PRODUCTION	6-1-64		A.M.	
X1	CA-412-6-5.50 WAS CA-412-15-9.50 (CL-2336 WAS CL-2336) WIRING DETAIL CHANGED, CA-412-17-5.00 WAS CA-412-17-5.00 C949 WAS C911, PICTORIAL CLARIFIED LEGEND WAS MS-202-36-9.62 WAS MS-202-8-7.62	5-13-64		SRG	

UNLESS OTHERWISE SPECIFIED:  
DIMENSIONS ARE IN INCHES  
TOLERANCES ARE  
FRACTIONS ± 1/64  
DECIMALS ± .005  
ANGLES ± 1/2°

SCALE  
MAXIMUM ALLOWABLE TOLERANCES HAVE BEEN DETERMINED AND ANY DEVIATIONS WILL BE CAUSE FOR REJECTION. REMOVE ALL BURRS & SHARP EDGES

RECEIVING THIS DRAWING  
THE TECHNICAL MATERIEL CORPORATION  
MAMARONECK, NEW YORK

REQ. UNIT	MODEL	SECTION	ASSY. NO.	DATE
	GPT-10K(17)			

FIGURE 4

REQ. ITEM	PART NO.	DESCRIPTION	SYMBOL
	FRUDETTI	THE TECHNICAL MATERIEL CORP. MAMARONECK, NEW YORK	
		10K MODIFICATION FOR DRIVER	
	SRG	DRAWN	
		CHECKED	
		FINAL APPROVAL	
		DATE	
		FINISH & SPEC. NO.	
		ELEC. DES. APP.	
		MECH. DES. APP.	
		SH. ET	
		OF	

DEFIANCE NO. 1000