

WALL OPENING FOR DUCT SYSTEM
(ELEVATION VIEW)
SEE SHEET 3 FOR FLOOR LAYOUT

ID-288
SH. 2 OF 3

3	24	PO 301 (NOT SHOWN)	FLANGE, ADAPTOR, RF XMSN LINE
1	23	PO 282	LINE SECT, RF XMSN, STRAIGHT-6 1/8, 50 OHM
1	22	CA 763 (IN REAR)	CABLE, ASSY 10K-40K-200K INTERCONNECT
*	21	CA-823-XX	CABLE, ASSY
1	20	MS-3509	DUCT, STRAIGHT
1	19	MS-3508	DUCT, OUTLET
1	18	MS-3505	DUCT, OUTLET
1	17	MS-3513	DUCT, OUTLET
2	16	MS-3511	DUCT, STRAIGHT
1	15	MS-3507	DUCT, OFFSET (INTAKE)
1	14	MS-3503	DUCT, OFFSET (EXHAUST)
1	13	MS-3506	DUCT, ELBOW (INTAKE)
1	12	MS-3502	DUCT, ELBOW (EXHAUST)
1	11	MS-3510	DUCT, ELBOW
1	10	PO-266-50-40000	LINE, RF XMSN, FLANGED-3 1/8, 50 OHM
2	9	PO-248-50	LINE SECTION, RF XMSN, ELBOW-3 1/8, 50 OHM
1	8	PO-280	ADAPTOR, TEE TO LINE-6 1/8, 50 OHM
3	7	PO-294	COUPLING, RF XMSN LINE-6 1/8, 50 OHM
2	6	PO-279	ADAPTOR, SWITCH TO LINE-6 1/8, 50 OHM
2	5	RL-149	RELAY, SWITCH, XMSN LINE-6 1/8
1	4	PO-278	LINE SECTION, RF XMSN, TEE-6 1/8, 50 OHM
2	3	PO-263-50	LINE SECTION, RF XMSN, ELBOW-6 1/8, 50 OHM
1	2	TER-100K	DISSIPATOR, RF POWER
1	1	GPT-200K	TRANSMITTER, GENERAL PURPOSE

CA645-1, CA783-XXX, CA823-XX.
* UNLESS SPECIFICALLY REQUESTED WITH DEFINITE LENGTHS, ONLY THE CONNECTORS WILL BE SUPPLIED FOR THESE ITEMS.

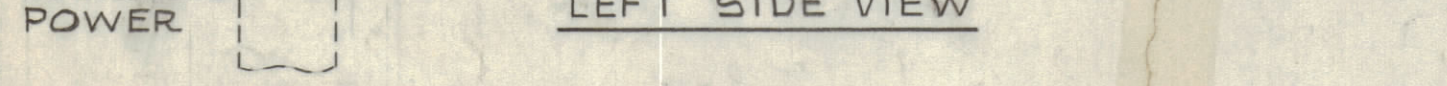
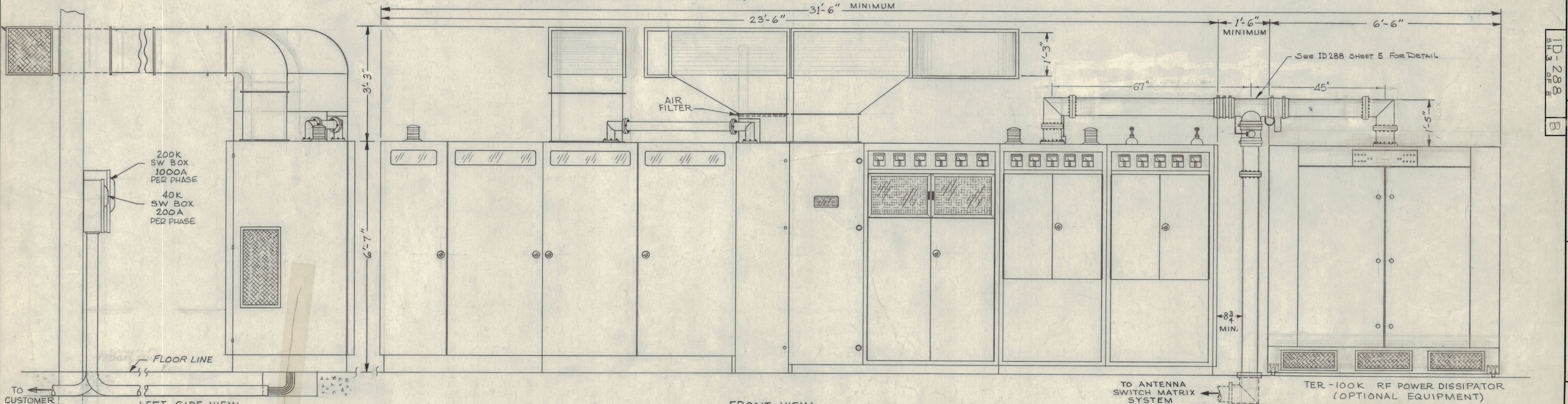
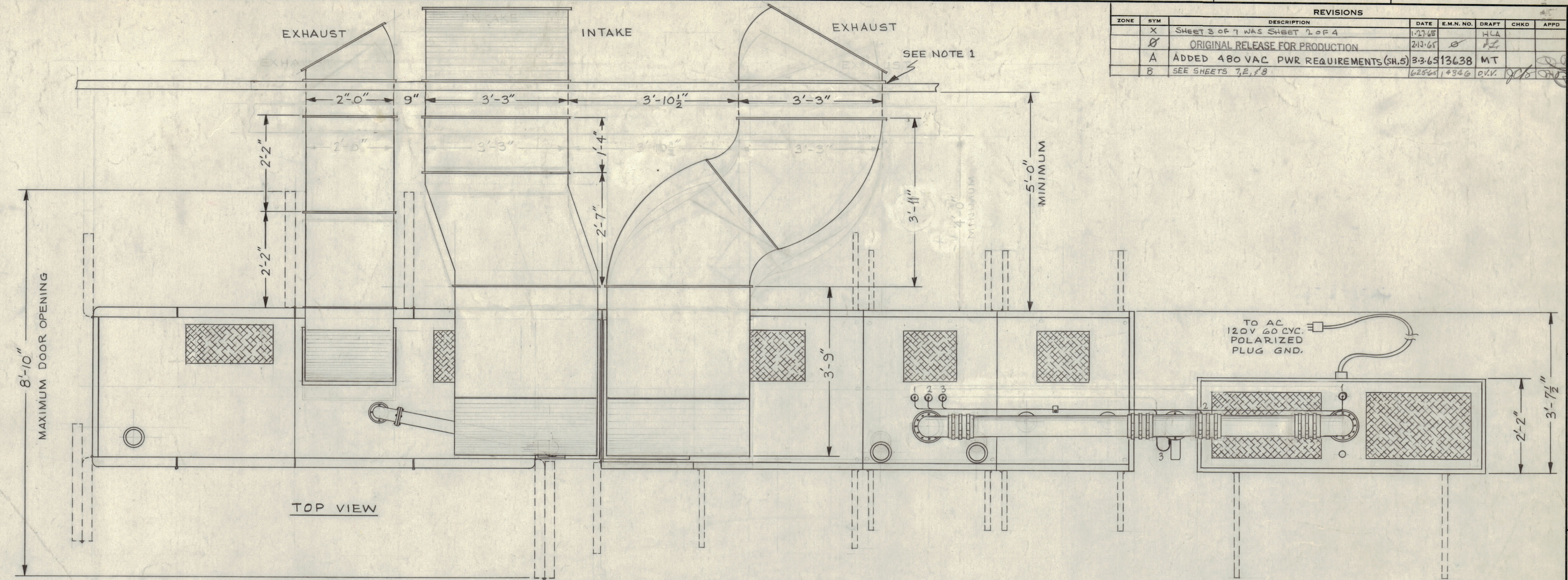
TMC INFO: ITEMS 1 & 2 FOR REF.
ITEMS 3-10, 21-24, P/O AX419.
ITEMS 11-20, P/O AX445.

B	IT. 10 WAS 37,000 (SEE SHEETS 7, C, E)	6/25/65	14346	DIV	10
A	ADDED 480 VAC POWER REQUIREMENTS (SH. 5)	3-3-65	13638	MT	
X	ORIGINAL RELEASE FOR PRODUCTION	2-13-65		HLA	
X	APP. IT. 13; CHG. IT. 3, 4, 5, 7, 9, 10	1-27-65		HLA	
SYM	ZONE	DESCRIPTION	DATE	CH. NO.	DRAFTS CHECKER ENG. APP.
UNLESS OTHERWISE SPECIFIED:			SCALE		
DIMENSIONS ARE IN INCHES			MAXIMUM ALLOWABLE TOLERANCES HAVE BEEN DETERMINED AND ANY DEVIATIONS WILL BE CAUSE FOR REJECTION. REMOVE ALL BURRS & SHARP EDGES		
TOLERANCES ON FRACTIONS ± 1/64			DECIMALS ± .005		
ANGLES ± 1/2°					

1	GPT-200K			4-23-63			
REQ. PER UNIT	MODEL	SECTION	ASSY. NO.	DATE	TYPE & TEMPER.	HEAT TREAT. SPEC.	
USED ON					FINISH & SPEC. NO.		
					ELEC. DES. APP.	MECH. DES. APP.	SHEET 2 OF 3

THE TECHNICAL MATERIEL CORP.
MAMARONECK, NEW YORK
ASSEMBLY, INSTALLATION
GPT-200K (AN/FRT-62)
M.J. TANTILLO 6/1/65
1D-288

REVISIONS		DATE	E.M.N. NO.	DRAFT	CHKD	APPD
X	SHEET 3 OF 7 WAS SHEET 1 OF 4	1-27-65		HCA		
0	ORIGINAL RELEASE FOR PRODUCTION	2-13-65		HZ		
A	ADDED 480 VAC PWR REQUIREMENTS (SH.5)	3-26-65	13638	MT		
B	SEE SHEETS 7, 8, 8B	6-25-65	1-346	C.V.V.		



NOTE 1 - SEE SHEET 1 FOR WALLEAD OPENING OF DUCTS.

NOTES

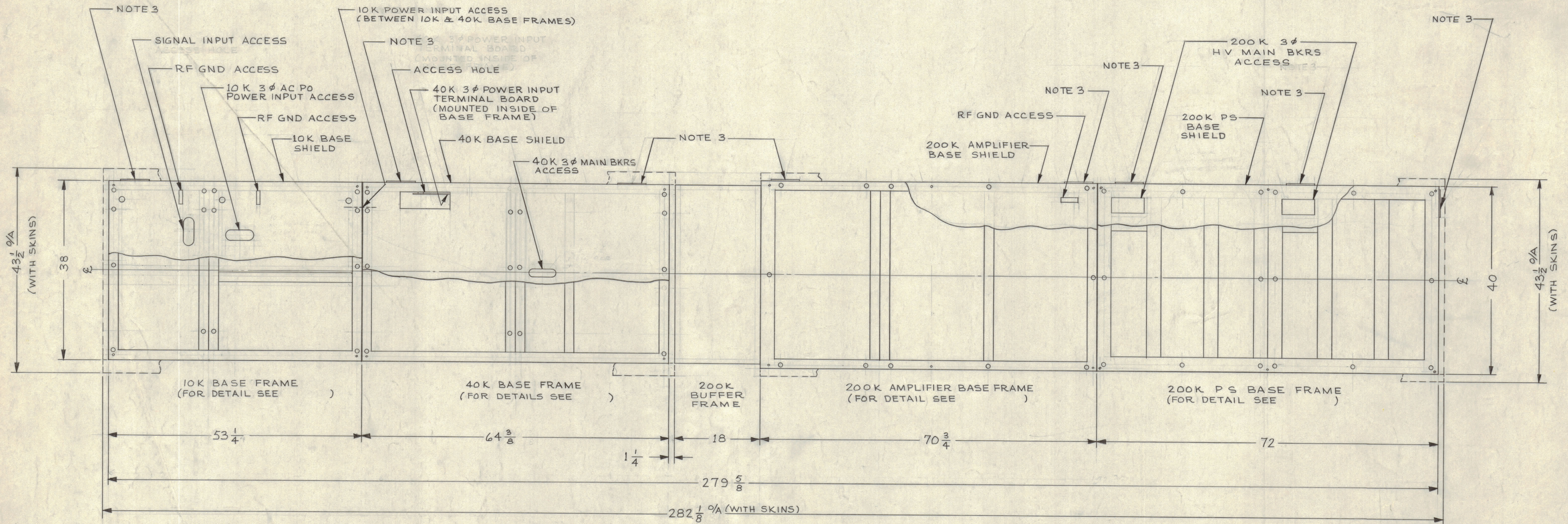
QTY/UNIT	MODEL USED ON	ASSY. NO.
SCALE 3/4" = 1 FT.	CODE	

DECIMALS	FRACTIONS	ANGLES
X ± .05	± 1/64	± 30'
XX ± .01		
XXX ± .005		

REQ'D.	ITEM	PART NUMBER	DESCRIPTION	SYMBOL
LIST OF MATERIAL				
MATERIAL		THE TECHNICAL MATERIEL CORP. MAMARONECK, NEW YORK		
FINISH		TITLE DIMENSIONAL OUTLINE GPT-200K (AN/FRT-62)		
UNLESS OTHERWISE SPECIFIED DIMENSIONS ARE IN INCHES AND INCLUDE CHEMICALLY APPLIED OR PLATED FINISHES		DRAWN M. J. TANTILLO DATE 4-1-63		
ELECT. DES.		DATE 1-23-65		
MECH. DES.		DATE 3-17-65		
TOLERANCES		ID-288		
		SHEET 3 OF 8		

ID-288
SH. 3 OF 8

REVISIONS							
ZONE	SYM	DESCRIPTION	DATE	E.M.N. NO.	DRAFT	CHKD	APPD
X		ON TITLE BLOCK SHEET 1 OF 7 WAS 3 OF 4	12/2/65		HCA		
		ORIGINAL RELEASE FOR PRODUCTION	2/11/67				
A		ADDED 480 VAC PWR. REQUIREMENTS (SH.5)	3/3/65	13628	MT		
B		SEE SHEETS 7, 2, 5	6/25/65	14346	DVV		



TOP VIEW - BASE PLAN

NOTES:

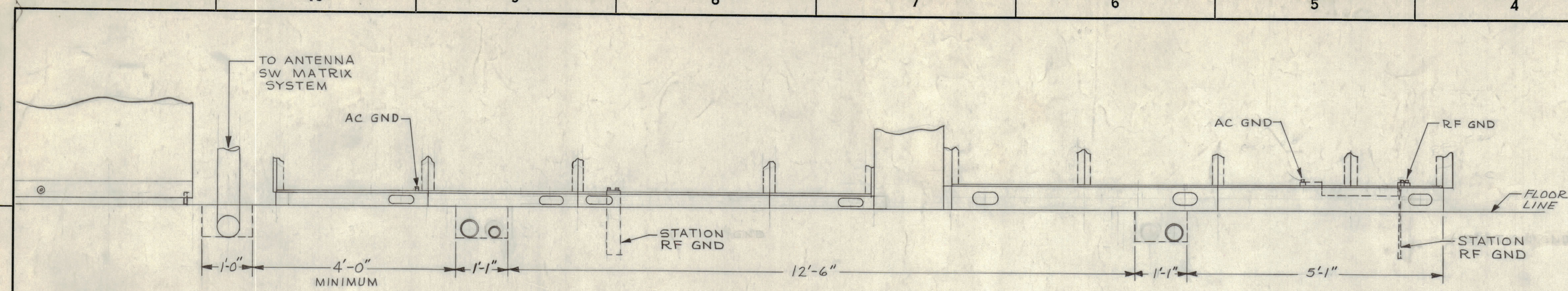
- 1 - THIS DRAWING IS INTENDED TO PROVIDE OUTLINE DETAIL FOR TRANSMITTER SITE SELECTION. PROPER ALIGNMENT OF TRANSMITTER IS BEST OBTAINED BY DRILLING BASE MOUNTING HOLES UPON RECEIPT OF BASE FRAMES.
- 2 - USE \mathcal{E} FOR INSTALLATION OF 10K, 40K, 200K BASE FRAMES AND BUFFER FRAME.
 - (a) 10K, 40K BASE FRAMES AND BUFFER FRAME 38 INCHES WIDE.
 - (b) 200K BASE FRAMES 40 INCHES WIDE.
- 3 - REMOVABLE ACCESS HOLE PLATES FOR INCOMING AC POWER AND SIGNAL WIRING.

NOTES

QTY./UNIT	MODEL USED ON	ABB'Y. NO.
SCALE	CODE	

REQ'D.	ITEM	PART NUMBER	DESCRIPTION	SYMBOL
LIST OF MATERIAL				
MATERIAL				
FINISH				
THE TECHNICAL MATERIEL CORP. MAMARONECK, NEW YORK				
TITLE BASE INSTALLATION GPT-200K (AN/FRT-62)				
DRAWN M. J. TANTILLO		DATE 5-16-63		FINAL APPROVAL
CHECKED 16		DATE 7-29-65		
ELECT. DES.		DATE 5/16/66		
MECH. DES.		DATE		
DIGITALS X ± .05 XX ± .01 XXX ± .005		TOLERANCES ± 1/64 ANGLES ± 0° 30'		DATE ID-288
THE CONTENTS OF THIS DRAWING ARE THE EXCLUSIVE PROPERTY OF THE TECHNICAL MATERIEL CORP. ITS UNAUTHORIZED USE OR REPRODUCTION IN WHOLE OR IN PART IS STRICTLY FORBIDDEN.		DATE		REV. LTR.

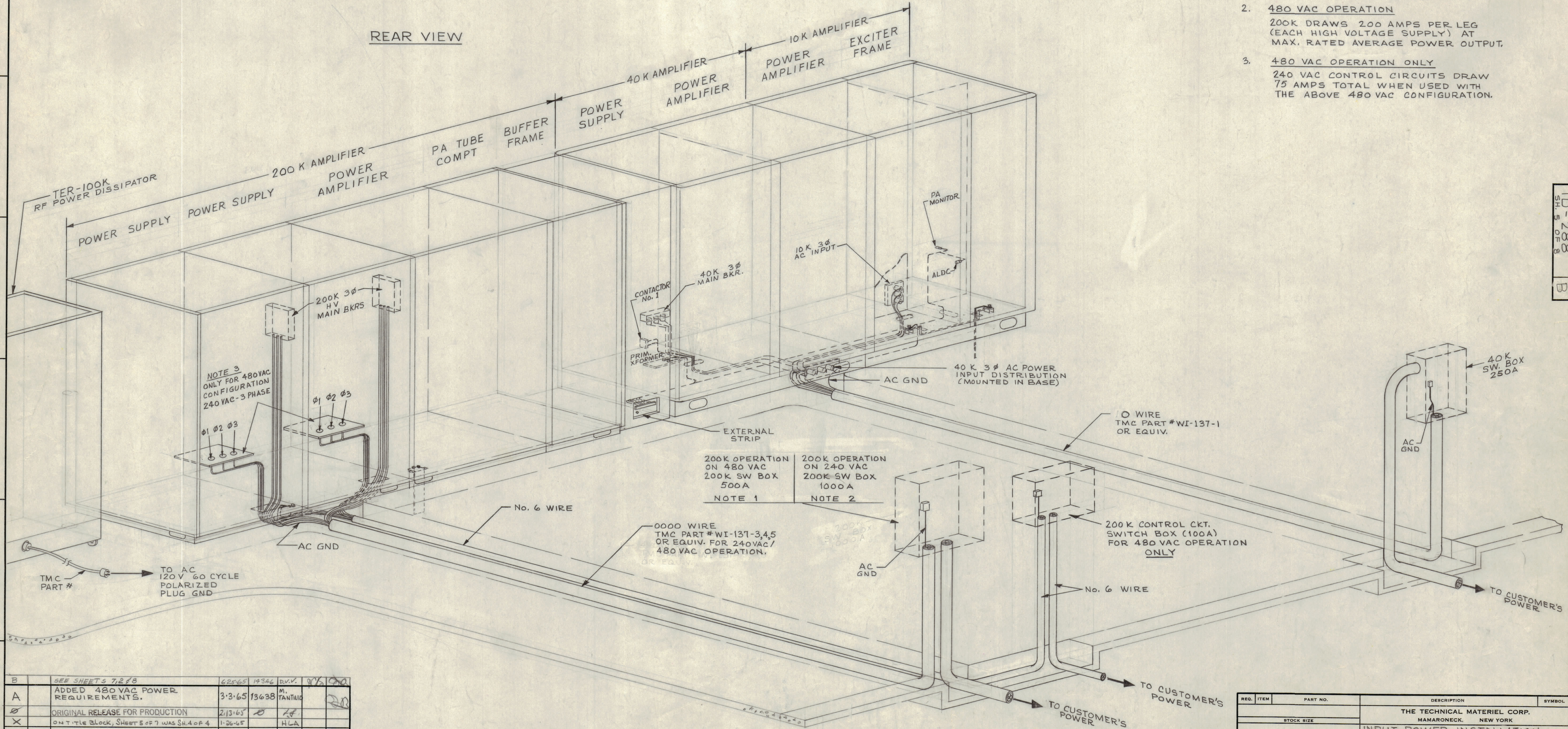
ID-288
SHEET 4 OF 8



REAR VIEW

INPUT POWER REQUIREMENTS
 240V 3 ϕ 60 CYCLES 190 A Per ϕ (40K AMPLIFIER)
 240V 3 ϕ 60 CYCLES 800A Per ϕ (200K AMPLIFIER)
 120V 1 ϕ 60 CYCLES 15A (TER-100K)
 AC GROUND \emptyset WIRE

- NOTES:**
- 240 VAC OPERATION**
200K DRAWS 390 AMPS PER LEG (EACH HIGH VOLTAGE SUPPLY) AT MAX. RATED AVERAGE POWER OUTPUT.
 - 480 VAC OPERATION**
200K DRAWS 200 AMPS PER LEG (EACH HIGH VOLTAGE SUPPLY) AT MAX. RATED AVERAGE POWER OUTPUT.
 - 480 VAC OPERATION ONLY**
240 VAC CONTROL CIRCUITS DRAW 75 AMPS TOTAL WHEN USED WITH THE ABOVE 480 VAC CONFIGURATION.



B	SEE SHEETS 7,2 & 8	62565	19346	D.V.V.	0/1	0/0
A	ADDED 480 VAC POWER REQUIREMENTS.	3-3-65	13638	M. TANTILIO		
	ORIGINAL RELEASE FOR PRODUCTION	2/13/65		L.F.		
X	ON TITLE BLOCK, SHEET 5 OF 7 WAS SH.4 OF 4	1-26-65		H.L.A.		
SYM	ZONE	DESCRIPTION	DATE	CH. NO.	DRAFTS	CHECKER
UNLESS OTHERWISE SPECIFIED:			SCALE			
DIMENSIONS ARE IN INCHES			MAXIMUM ALLOWABLE TOLERANCES HAVE BEEN DETERMINED AND ANY DEVIATIONS WILL BE CAUSE FOR REJECTION. REMOVE ALL BURRS & SHARP EDGES			
TOLERANCES ON FRACTIONS $\pm 1/64$			DECIMALS $\pm .005$		ANGLES $\pm 1/2^\circ$	

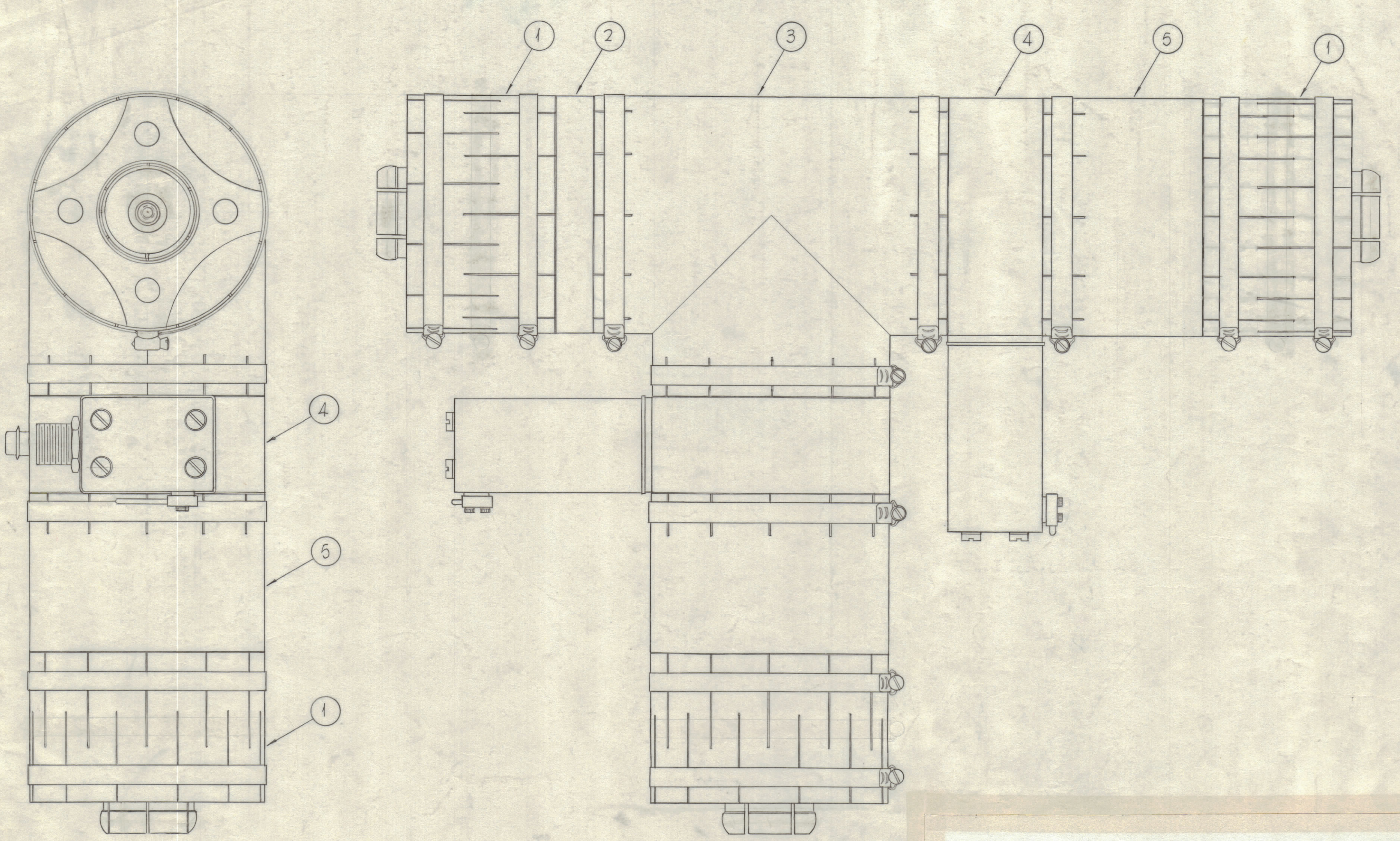
REQ. PER UNIT	MODEL	SECTION	ASS'Y. NO.	DATE
	GPT-200K			4-17-63
USED ON				

REQ. ITEM	PART NO.	DESCRIPTION	SYMBOL
THE TECHNICAL MATERIEL CORP. MAMARONECK, NEW YORK			
INPUT POWER INSTALLATION, GPT-200K (AN/FRT-62)			
M.J.TANTILIO 4/17/63 RAC			
DRAWN	CHECKED	FINAL APPROVAL	
		ID-288	
FINISH & SPEC. NO.		ELEC. DES. APP.	MECH. DES. APP.
		SHEET 5 OF 8	

ID-288
SHEET 5 OF 8

REV	SYM	DESCRIPTION	DATE	BY	CHKD	APPD
1						

REVISIONS							
ZONE	SYM	DESCRIPTION	DATE	E.M.N. NO.	DRAFT	CHKD	APPD
X		DWG. SUPERSEDES A3198-A - LIST OF MAT'L. UPDATED	1-17-65		HLA		
		ORIGINAL RELEASE FOR PRODUCTION	2-13-65		RL		
A		ADDED 480 VAC PWR REQUIREMENTS (SH. 5)	3-3-65	13638	MT		
B		SEE SHEETS 7, 2, F 8	6-25-65	14346	D.V.V.		



ID 288
SHEET 6 OF 8
B

2	5	PO-279	ADAPTOR, SWITCH TO LINE-G 1/8, 50 OHM
2	4	RL-149	RELAY SWITCH-XMSN LINE-G 1/8
1	3	PO-278	LINE SECT, RF XMSN, TEE-G 1/8, 50 OHM
1	2	PO-280	ADAPTOR, TEE TO LINE-G 1/8, 50 OHM
3	1	PO-294	COUPLING, RF XMSN LINE-G 1/8, 50 OHM

LIST OF MATERIAL				
REQ'D.	ITEM	PART NUMBER	DESCRIPTION	SYMBOL
MATERIAL				
FINISH				
UNLESS OTHERWISE SPECIFIED DIMENSIONS ARE IN INCHES AND INCLUDE CHEMICALLY APPLIED OR PLATED FINISHES				
DECIMALS	J ± .08	K ± .01	XXX ± .005	
FRACTIONS	± 1/64	ANGLE	± 0° 30'	
DRAWN	DATE	FINAL APPROVAL	DATE	
CHECKED	DATE			
ELECT. DES.	DATE			
MECH. DES.	DATE			

GPT-200K		
QTY./UNIT	MODEL USED ON	ASS'Y. NO.
SCALE	CODE	
1/2 = 1		

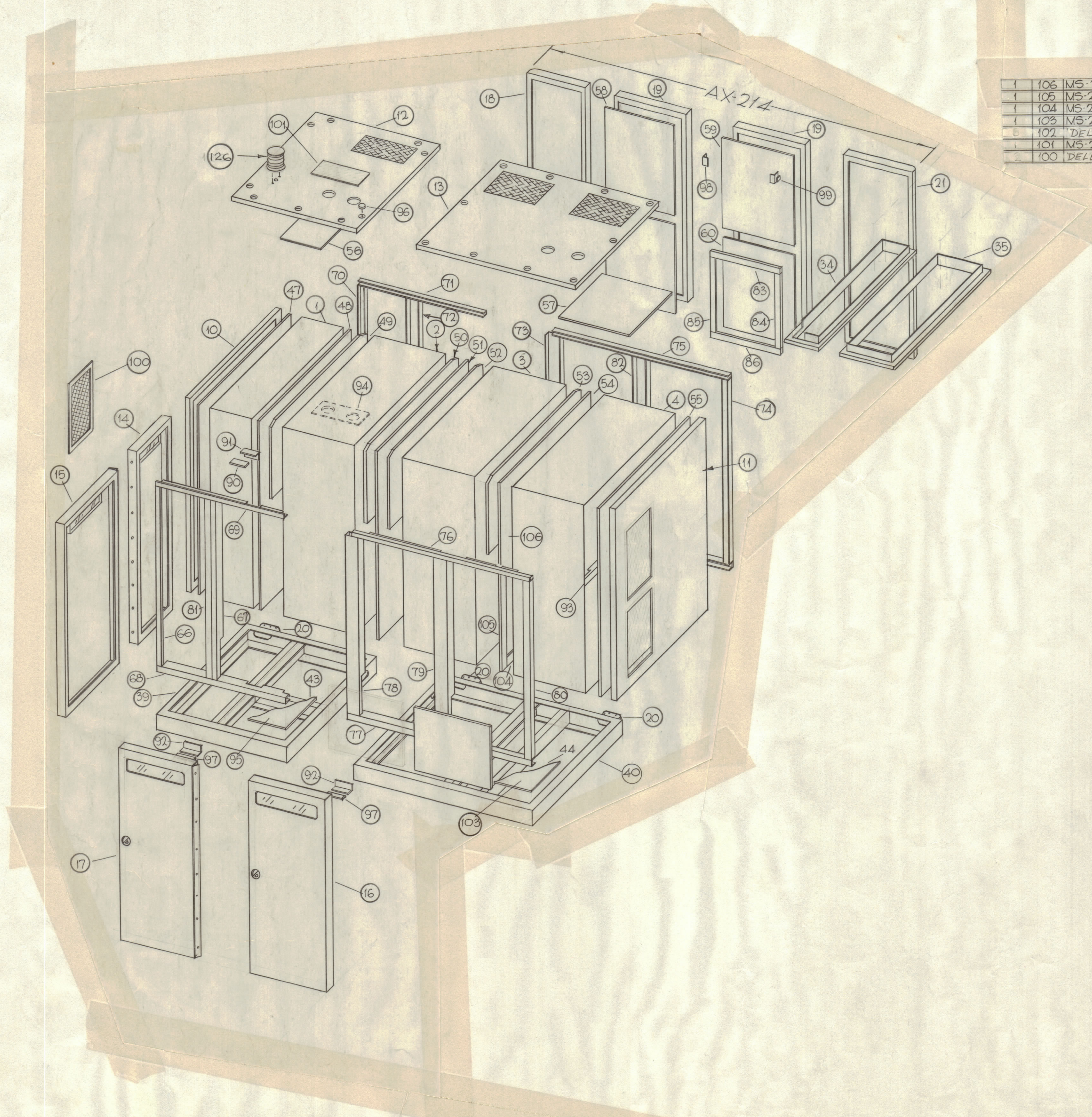
NOTES

THE CONTENTS OF THIS DRAWING ARE THE EXCLUSIVE PROPERTY OF THE TECHNICAL MATERIEL CORP. ITS UNAUTHORIZED USE OR REPRODUCTION IN WHOLE OR IN PART IS STRICTLY FORBIDDEN.

THE TECHNICAL MATERIEL CORP.
MAMARONECK, NEW YORK

TITLE
COAXIAL SWITCH ASS'Y,
G 1/8

DATE 1-17-65
DATE 1-23-65
DATE 1-17-65
DATE
SHEET 6 OF 8
REV. LTR. B



1	106	MS-2299-2	SPACER, BOTTOM, RIGHT SIDE REAR
1	105	MS-2299-1	SPACER, BOTTOM, RIGHT SIDE FRONT
1	104	MS-2303	SPACER, BOTTOM, RIGHT SIDE
1	103	MS-2336	COVER, AC ACCESS ON ITEM 34
1	102	DELETED	COVER, AC ACCESS ON ITEM 34
1	101	MS-2442	COVER, BOWL OPENING
1	100	DELETED	COVER, BOWL OPENING

3	99	MS-2042	BRACKET, DOOR MTG. RIGHT SIDE
2	98	MS-2041	BRACKET, DOOR MTG. LEFT SIDE
2	97	MS-2122	PLATE, LATCH BOTTOM
46	96	HP-101-G-B	PLUG, BOTTOM
2	95	MS-1850-A	DOOR, ACCESS
1	94	MS-2338	PLATE, BLANK, CONVERSION ITEM 2
1	93	PV-603	BAR, SUPPORT, P.S. FRAME
2	92	MS-2123	BRACKET, MTG. DOOR LATCH
1	91	MS-1661	BRACKET
1	90	MS-1660	PLATE, TOP
89	DELETED		TRIM, FRONT, BOTTOM, PA FRAME
88	DELETED		TRIM, FRONT, BOTTOM, PA FRAME
87	DELETED		TRIM, FRONT, BOTTOM, PA FRAME
1	86	MS-2226	STRIP, BOTTOM, REAR, P.A. FRAME
1	85	MS-2227	STRIP, LEFT SIDE, REAR, P.A. FRAME
1	84	MS-2302	STRIP, RIGHT SIDE, P.A. FRAME
1	83	MS-2301	STRIP, TOP, REAR, P.A. FRAME
1	82	MS-2051	TRIM, RIGHT SIDE, REAR, P.A. FRAME
1	81	MS-1637	TRIM, HINGED, RIGHT SIDE, EXCITER FR.
1	80	MS-2025	TRIM, RIGHT SIDE, P.S. FRAME
1	79	MS-2027	TRIM, P.S. & P.A. FRAME FRONT
1	78	MS-2026	TRIM, FRONT, LEFT SIDE, P.A./MAIN FRAME
1	77	MS-3645	TRIM, FRONT, BOTTOM
1	76	MS-2028	TRIM, FRONT, TOP
1	75	MS-2053	TRIM, TOP & BOTTOM, REAR
1	74	MS-1671	TRIM, REAR, P.S. FRAME
1	73	MS-2052	TRIM, REAR, LEFT SIDE, P.A. FRAME
1	72	MS-1669	TRIM, REAR, MAIN EXCITER FRAME
2	71	MS-1672	TRIM, REAR, TOP & BOTTOM
1	70	MS-1670	TRIM, REAR, EXCITER FRAME
1	69	MS-1635	TRIM, FRONT, TOP
1	68	MS-3646	TRIM, BOTTOM, TOP
1	67	MS-1634	TRIM, LEFT SIDE, HINGED, MAIN FRAME
1	66	MS-1920	TRIM, HINGED, EXCITER FRAME
1	65	DELETED	TRIM, HINGED, EXCITER FRAME
1	64	MS-1920	TRIM, HINGED, EXCITER FRAME
1	63	MS-1920	TRIM, HINGED, EXCITER FRAME
1	62	MS-1920	TRIM, HINGED, EXCITER FRAME
1	61	MS-1920	TRIM, HINGED, EXCITER FRAME
1	60	MS-2185	SHIELD, BOTTOM, REAR, POWER AMPL. FRAME
1	59	MS-1993	SHIELD, REAR, POWER AMPLIFIED FRAME
1	58	MS-1594	SHIELD, REAR, MAIN FRAME
1	57	MS-2035	SHIELD, TOP, REAR, POWER SUPPLY FRAME
1	56	MS-1604	SHIELD, TOP, EXCITER FRAME
1	55	MS-2018	SHIELD, RIGHT SIDE, POWER SUPPLY FRAME
1	54	MS-2200	SHIELD, RIGHT SIDE, EXT. POWER AMPL. FRAME
1	53	MS-1991	SHIELD, RIGHT SIDE, POWER AMPL. FRAME
1	52	MS-1990	SHIELD, LEFT SIDE, POWER AMPL. FRAME
1	51	MS-1830	SHIELD, RIGHT SIDE, MAIN FRAME
1	50	MS-1692	SHIELD, RIGHT SIDE, MAIN FRAME
1	49	MS-1693	SHIELD, LEFT SIDE, MAIN FRAME
1	48	MS-1829	SHIELD, LEFT SIDE, MAIN FRAME
1	47	MS-1831	SHIELD, LEFT SIDE, EXCITER FRAME
1	46	DELETED	SHIELD, LEFT SIDE, EXCITER FRAME
1	45	DELETED	SHIELD, LEFT SIDE, EXCITER FRAME
1	44	MS-1999	SHIELD, BASE
1	43	MS-2176	SHIELD, BASE
1	42	MS-3166	BASE, POWER SUPPLY FRAME'S
1	41	MS-3155	BASE, AMPLIFIER FRAME'S
1	40	MS-1996	BASE
1	39	MS-1458	BASE
1	38	DELETED	BASE
1	37	MS-3162	COVER, TOP, P.S.-A
1	36	MS-3161	COVER, TOP, FINAL AMPL. FRAME
1	35	MS-3186	FRAME, DUCT, TOP
1	34	MS-3185	FRAME, AIR INTAKE
1	33	DELETED	FRAME, AIR INTAKE
1	32	DELETED	FRAME, AIR INTAKE
1	31	MS-1647	DOOR, REAR, MAIN P.S. FRAME
3	20	MS-1850	DOOR, ACCESS
2	19	MS-2037	DOOR, REAR, MAIN & P.A. FRAMES
1	18	MS-1648	DOOR, REAR, EXCITER FRAME
1	17	DELETED	DOOR, FRONT, P.S. FRAME
1	16	MS-2118	DOOR, FRONT, P.S. FRAME
1	15	MS-2120-1	DOOR, FRONT, MAIN FRAME
1	14	MS-2119	DOOR, FRONT, EXCITER FRAME
1	13	MS-1997	COVER, TOP
1	12	MS-1699	COVER, TOP
1	11	MS-2116	COVER, RIGHT SIDE
1	10	MS-2117	COVER, LEFT SIDE
1	9	DELETED	POWER SUPPLY A FRAME
1	8	DELETED	POWER SUPPLY A FRAME
1	7	DELETED	POWER SUPPLY A FRAME
1	6	DELETED	POWER SUPPLY A FRAME
1	5	DELETED	POWER SUPPLY A FRAME
1	4	MS-1995	POWER SUPPLY FRAME
1	3	MS-1994	POWER AMPL. FRAME
1	2	MS-1456	MAIN FRAME
1	1	MS-1455	EXCITER FRAME

ZONE	SYM	DESCRIPTION	DATE	E.M.N. NO.	DRAFT	CHKD	APPD
B		ITS 56, 78, 9, 17, 22, 30, 33, 38, 42, 41, 45, 46, 61, 70, 65 82, 88, 89, 100, 102 DELETED ADDED TO ID 288	1/25/63	14	D.V.		

NOTES

QTY./UNIT	MODEL USED ON	ASSY. NO.
SCALE	CODE	

UNLESS OTHERWISE SPECIFIED DIMENSIONS ARE IN INCHES AND INCLUDE CHEMICALLY APPLIED OR PLATED FINISHES

DRAWN	DATE	FINAL APPROVAL	DATE
M. J. ANTILLO	5-7-63		
CHECKED	DATE		
ELECT. DES.	DATE	ID 288	B
MECH. DES.	DATE	SHEET 8 OF 8	REV. LTR.

THE CONTENTS OF THIS DRAWING ARE THE EXCLUSIVE PROPERTY OF THE TECHNICAL MATERIEL CORP. ITS UNAUTHORIZED USE OR REPRODUCTION IN WHOLE OR IN PART IS STRICTLY FORBIDDEN.

DECIMALS ±.08 FRACTIONS ±1/64 ANGLES ±0° 30'