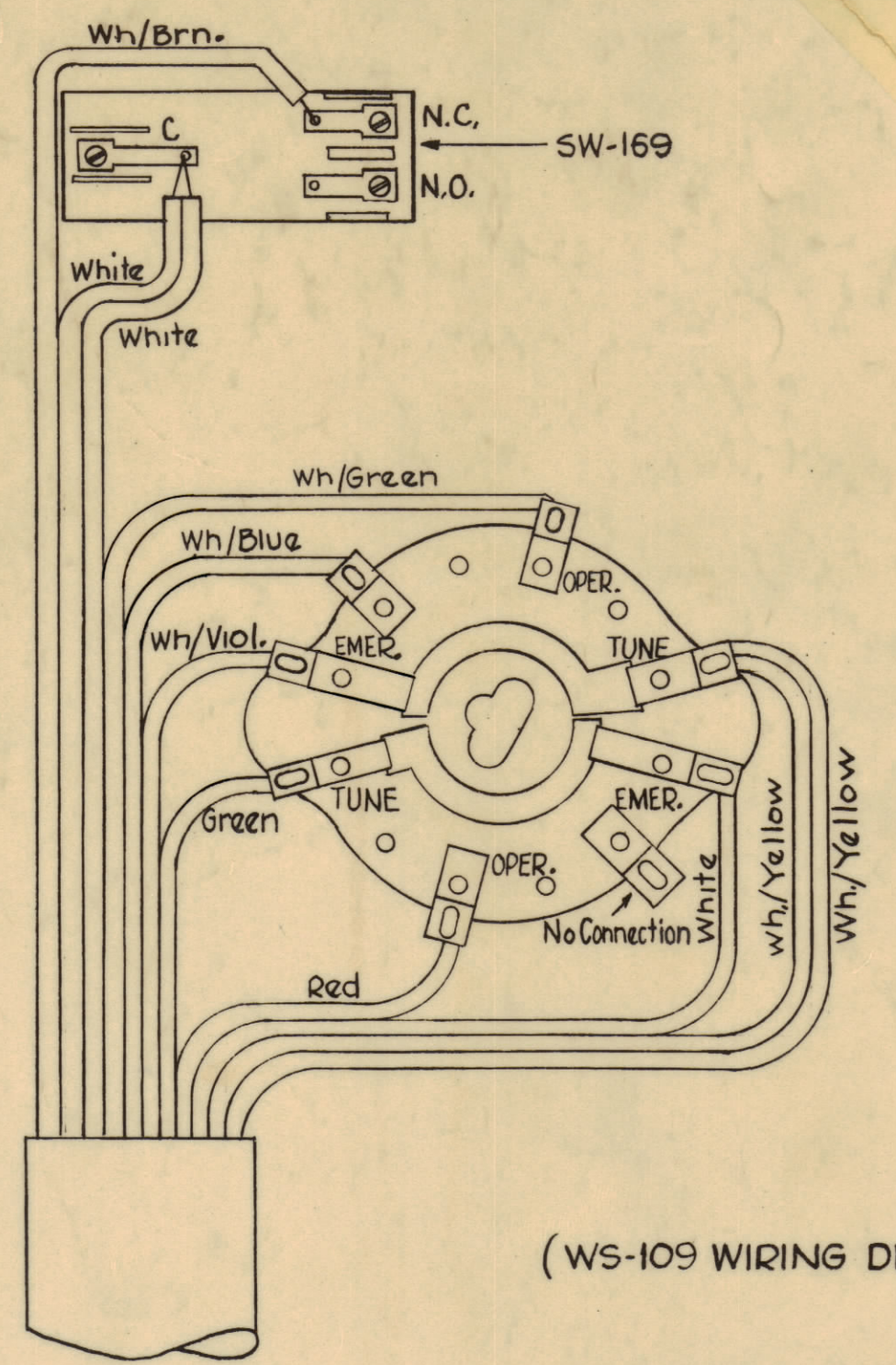
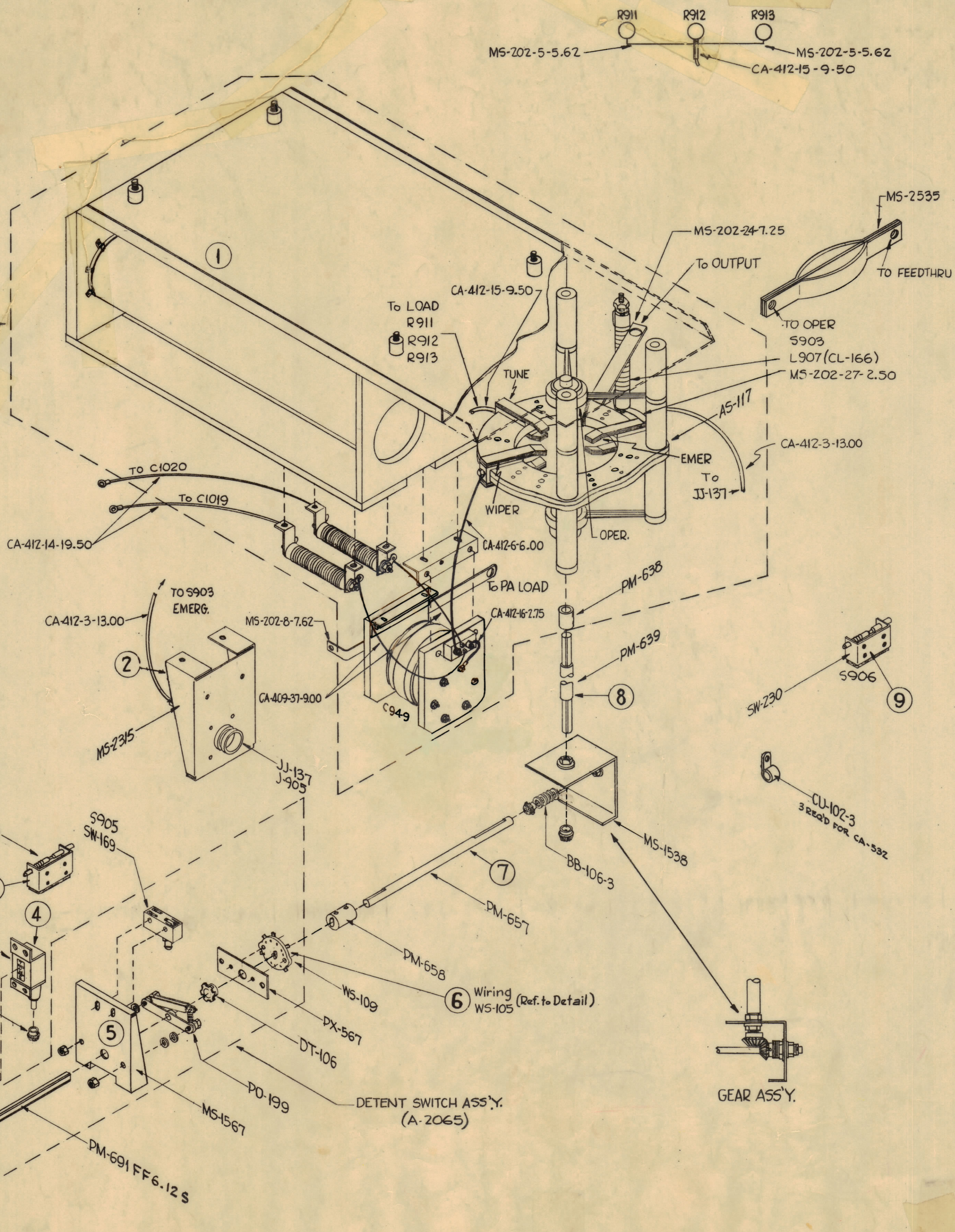
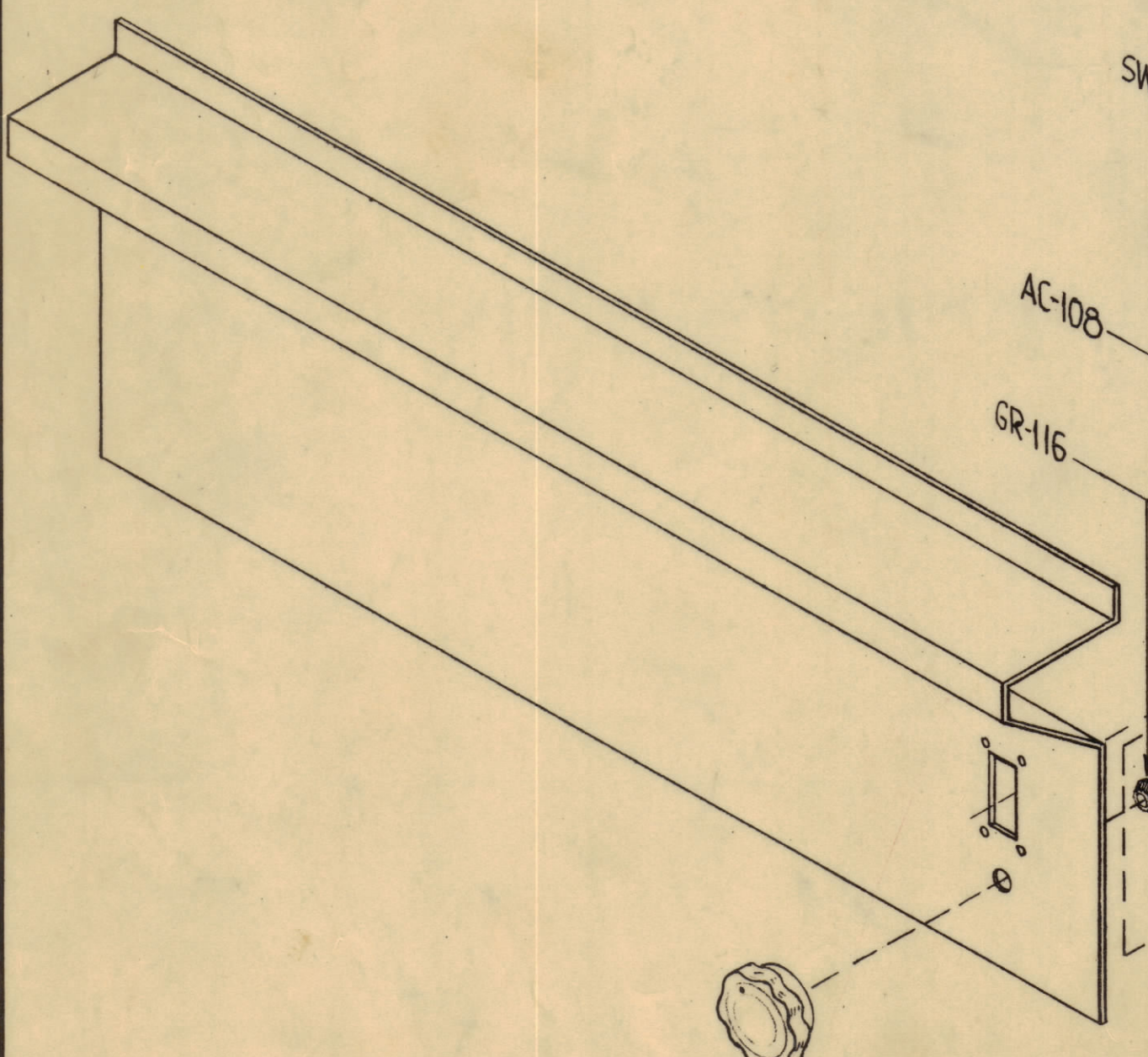
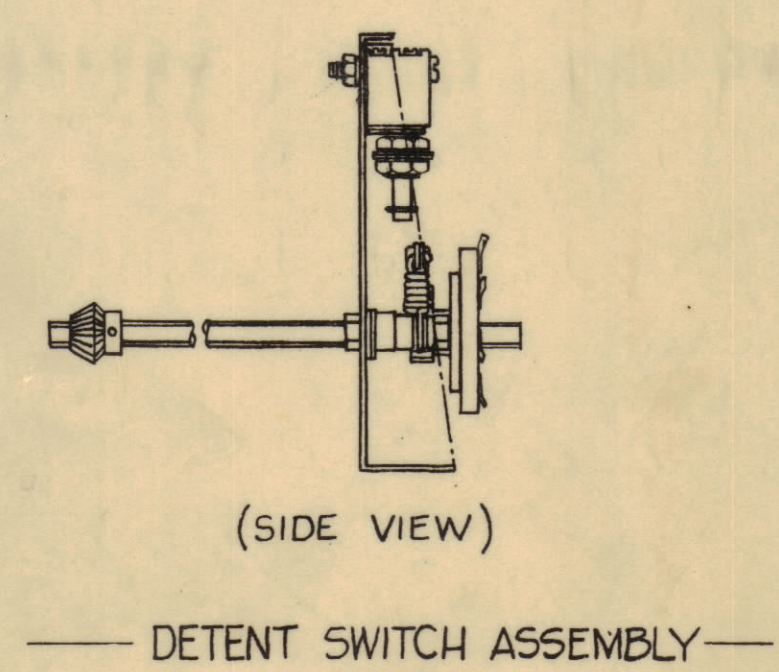


OBSOLETE
 USE ID 293 FOR NEW UNITS & KITS WITH SWR. USE ID 299 FOR NEW KITS WITHOUT SWR.



(WS-109 WIRING DETAIL)

- CONNECTION LEGEND**
- TUBING AND/OR WIRE BUSS
- (2) CA-409-37-9.00 - TC900 to L916, 917
 - (1) CA-412-3-13.00 - S903(EMERG) to J905
 - (1) CA-412-6-6.00 - S903(WIPER) to TC900
 - (2) CA-412-14-19.50 - L916 to C1019, L917 to C1020
 - (1) CA-412-15-9.50 - S903(TUNE) to R911, 12, 13
 - (1) CA-412-16-2.75 - TC900 to C911
- STRAPS
- (1) M5-202-24-7.25 - S903(OPER) to C916 (OUTBAL)
 - (2) M5-202-5-5.62 - R911 to 12, 912 to 13
 - (1) M5-202-8-7.62 - C911 to C928 (PA LOAD)
 - (1) M5-2535 - S903(OPER) to F.T.
 - (1) M5-202-27-2.50 - L907 to S903(EMERG.)



NOTICE TO PERSONS RECEIVING THIS DRAWING

THE TECHNICAL MATERIEL CORPORATION claims proprietary right in the material disclosed herein. This drawing is issued in confidence for engineering information only and may not be reproduced or used to manufacture anything shown herein without permission from THE TECHNICAL MATERIEL CORPORATION to the user. This drawing is loaned for mutual assistance and is subject to recall at any time.

Property of:
 THE TECHNICAL MATERIEL CORPORATION
 MAMARONECK, NEW YORK

C	E10	OBSOLETE NOTE ADDED	10-26-64	12771	DB		
B	D-2	DELETED (1) M5-202-5-1.75 & C911 FROM LEGEND	11-7-61	5859	DB		
A	FB	M5-202-27-2.50 & CL-166 Added to Pictorial	7-31-61	4971	RL		
SYM	ZONE	DESCRIPTION	DATE	CH. NO.	DRAFTS	CHECKER	ENG. APP.

UNLESS OTHERWISE SPECIFIED:
 DIMENSIONS ARE IN INCHES
 TOLERANCES ON FRACTIONS ± 1/64 DECIMALS ± .005 ANGLES ± 1/2°

MAXIMUM ALLOWABLE TOLERANCES HAVE BEEN DETERMINED AND ANY DEVIATIONS WILL BE CAUSE FOR REJECTION. REMOVE ALL BURRS & SHARP EDGES

REQ. ITEM	PART NO.	F. BUDETTI	DESCRIPTION	SYMBOL
STOCK SIZE		THE TECHNICAL MATERIEL CORP. MAMARONECK, NEW YORK		
MATERIAL		10K MODIFICATION FOR 40K DRIVER		
TYPE & TEMPER		DRAWN: [Signature] CHECKED: [Signature] FINAL APPROVAL: [Signature]		
HEAT TREAT. SPEC.		ID-247		
FINISH & SPEC. NO.		ELEC. DES. APP. MECH. DES. APP. SHEET OF		

REQ. PER UNIT	MODEL	SECTION	ASSY. NO.	DATE
	GPT-40K			3/6/61
USED ON				

ID-247 C

FIGURE 4