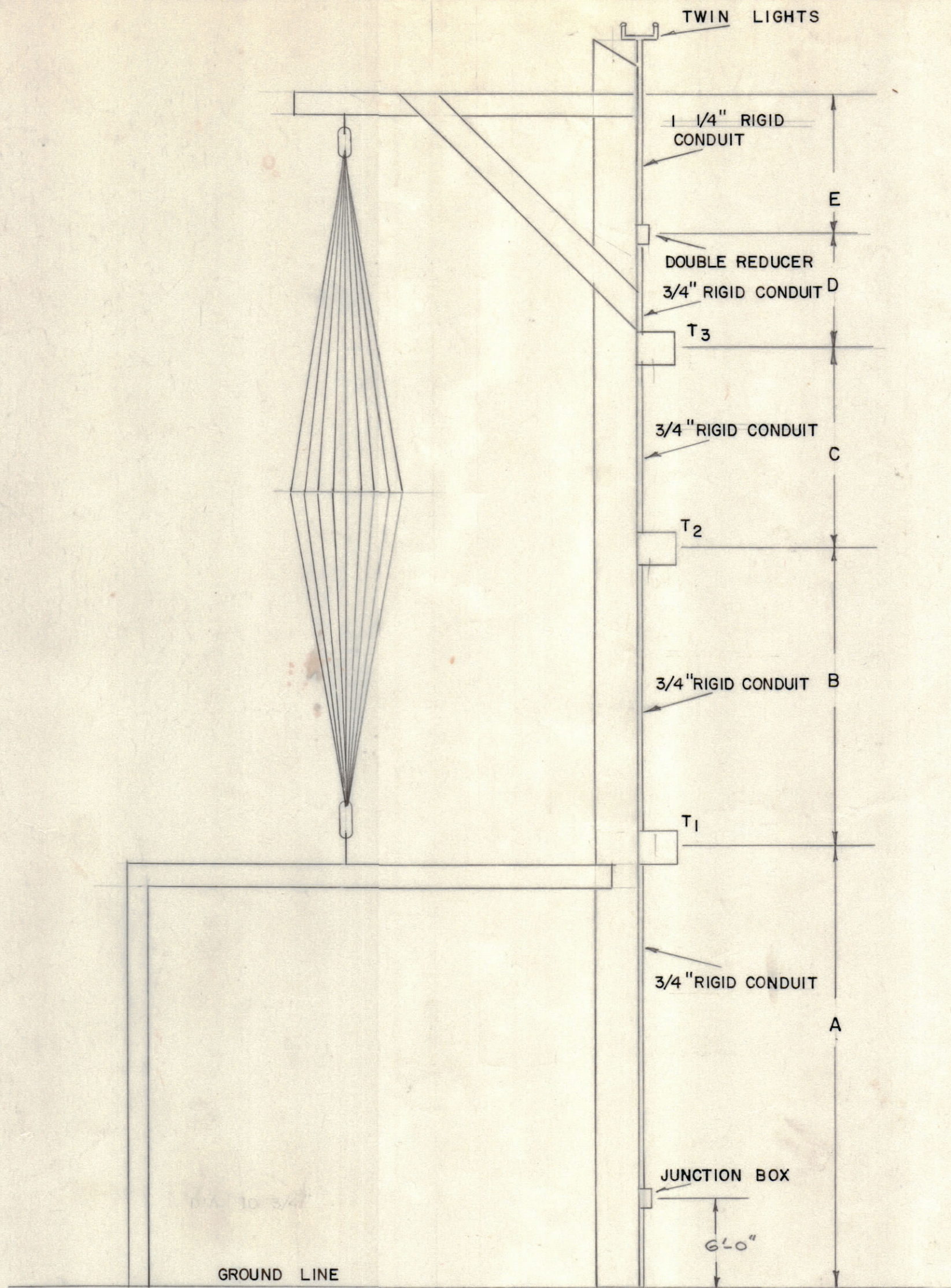


IF IT IS FOUND DESIRABLE TO CHANGE ANY TOLERANCE OR OTHER DETAIL SPECIFIED ON THIS DRAWING NOTIFY THE PURCHASER PROMPTLY.
 MAXIMUM ALLOWABLE TOLERANCES HAVE BEEN DETERMINED AND DEVIATIONS WILL BE CAUSE FOR REJECTION. REMOVE ALL BURRS AND SHARP EDGES

NOTICE TO PERSONS RECEIVING THIS DRAWING

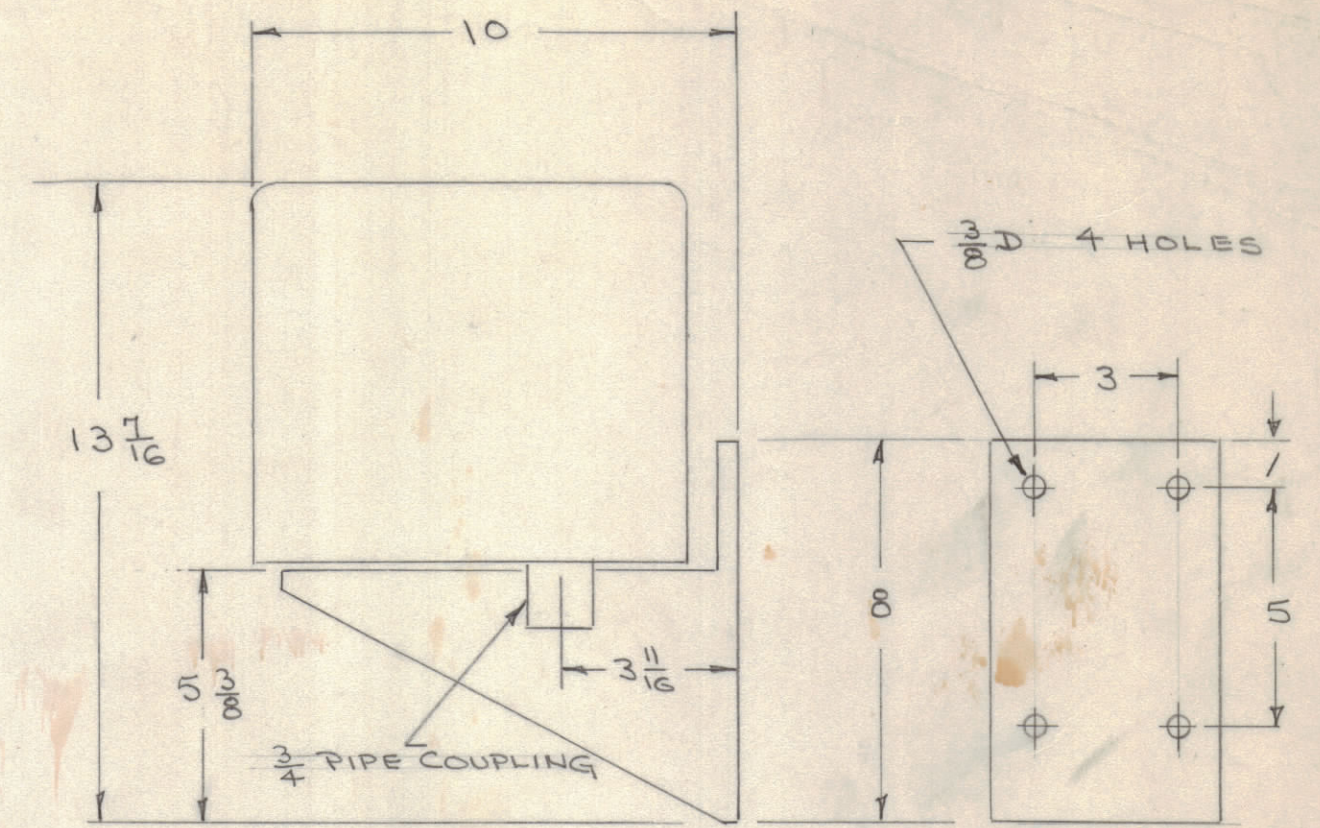
THE TECHNICAL MATERIEL CORPORATION claims proprietary right in the material disclosed hereon. This drawing is issued in confidence for engineering information only and may not be reproduced or used to manufacture anything shown hereon without permission from THE TECHNICAL MATERIEL CORPORATION to the user. This drawing is loaned for mutual assistance and is subject to recall at any time.

Property of:
 THE TECHNICAL MATERIEL CORPORATION
 MAMARONECK, NEW YORK



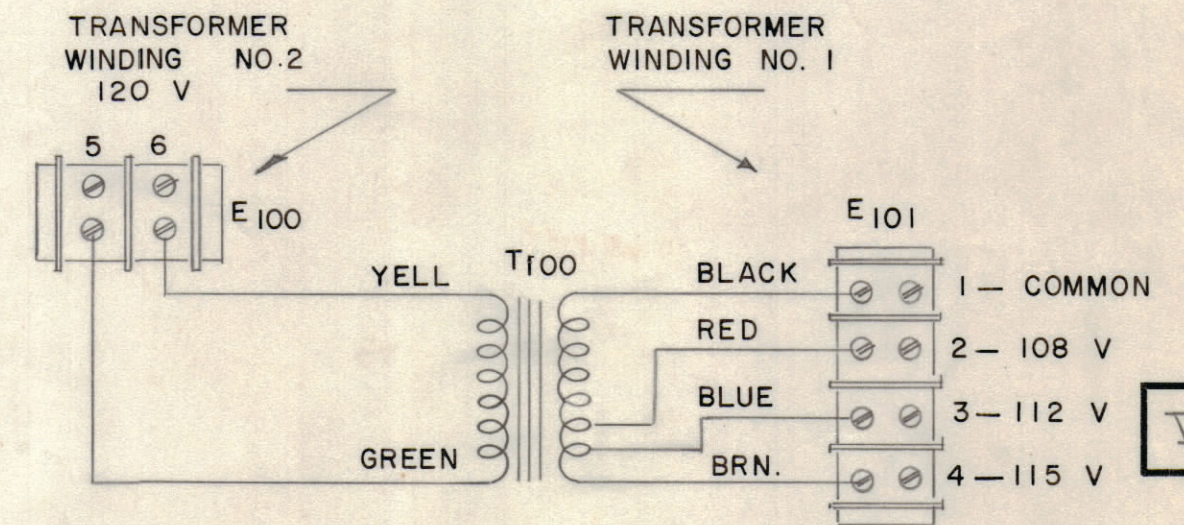
NOTE: ISOLATION TRANSFORMERS NOT APPLICABLE ABOVE 9 MCS.
 APPROXIMATE DIMENSIONS SHOWN IN CHART.

FREQ. RANGE	3-9	2.5-7.5	2-6
POLE HT. ABOVE GND	78'-4"	94'-0"	117'-6"
A	29'-6"	35'-5"	44'-4"
B	16'-3"	19'-5"	24'-4"
C	16'-3"	19'-5"	24'-4"
D	8'-3"	10'-0"	12'-5"
E	7'-9"	9'-5"	11'-9"

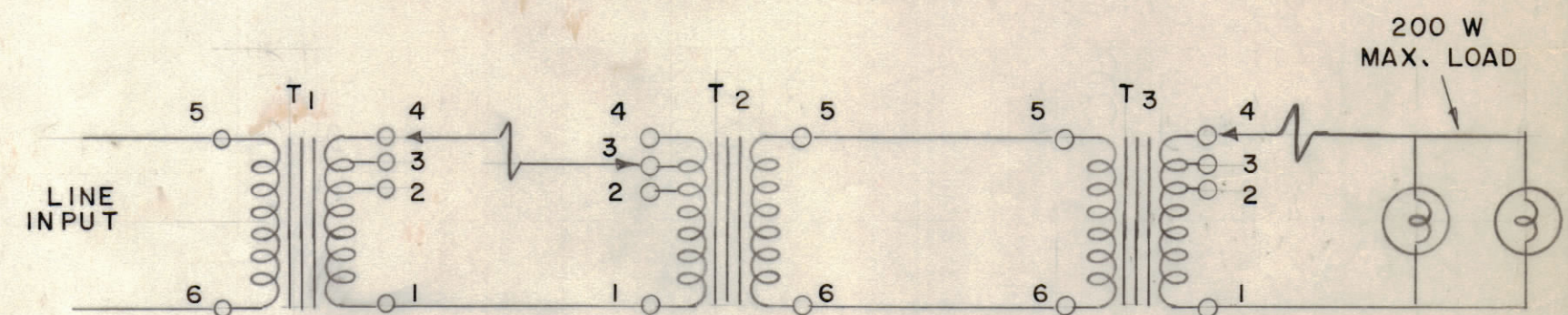


MOUNTING DIMENSIONS

SCHEMATIC DIAGRAM, MODEL TLI-1
 60 CYCLES 200 WATTS



ID-209



UNDER FULL LOAD CONDITIONS:

1. FOR OUTPUT VOLTAGE TO APPROXIMATE INPUT VOLTAGE, CONNECT AS SHOWN ABOVE.
2. FOR AN OUTPUT VOLTAGE WHICH IS LESS THAN THE INPUT VOLTAGE, ADJUST TAPS ON T₁ AND USE TAPS 1 AND 4 ON T₂ AND T₃.
3. FOR AN OUTPUT VOLTAGE WHICH IS GREATER THAN THE INPUT VOLTAGE, ADJUST TAPS ON T₂ AND USE TAPS 1 AND 4 ON T₃ AND T₁.
4. FOR EXTREMELY LOW OUTPUT VOLTAGE, ADJUST TAPS ON BOTH T₁ AND T₃ AND USE TAPS 1 AND 4 ON T₂.

ISSUE	ITEM	CHANGED FROM	DATE	CN. NO.	DRAFTS	CHECKER	ENG. APP.
TOLERANCES		SCALE:					
ALL OTHERS	DEC. DIM. ± FRAC. DIM. ± ANGULAR DIM. ±	DRILL, PUNCH, COMMERCIAL STOCK SIZES AND MANUFACTURERS TOLERANCES ARE NOT INCLUDED.					

REQ PER UNIT	MODEL	PROJECT NO.	ASS'Y. NO.	DATE

REQ. ITEM	PART NO.	DESCRIPTION	SYMBOL
THE TECHNICAL MATERIEL CORP. MAMARONECK, NEW YORK			
STOCK SIZE			
MATERIAL WEIGHT PER PC.			
TYPE & TEMPER			
DRAWN		ELEC. DES. APP.	MECH. DES. APP.
HEAT TREAT. SPEC.		CHECKED	FINAL APPROVAL
FINISH & SPEC. NO.			

ID-209