

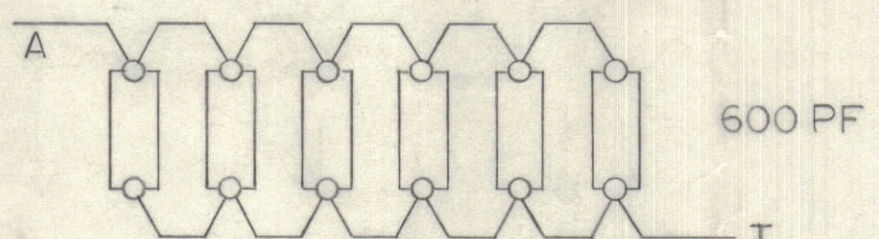
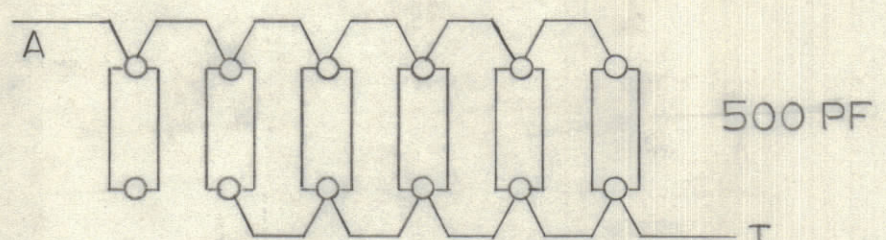
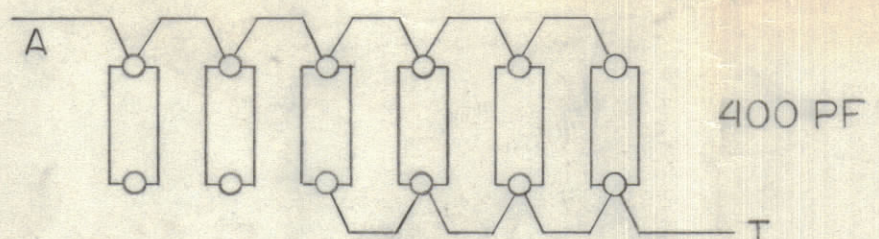
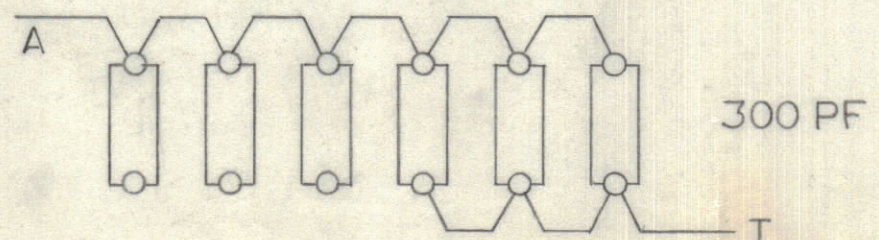
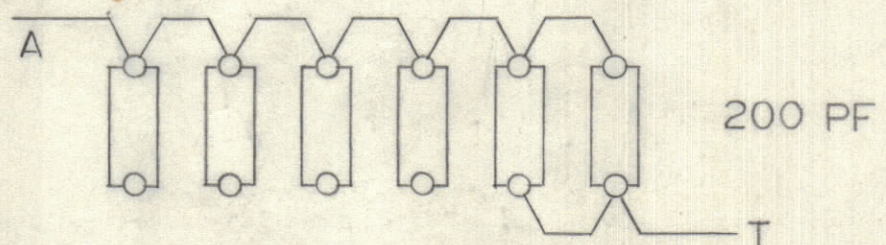
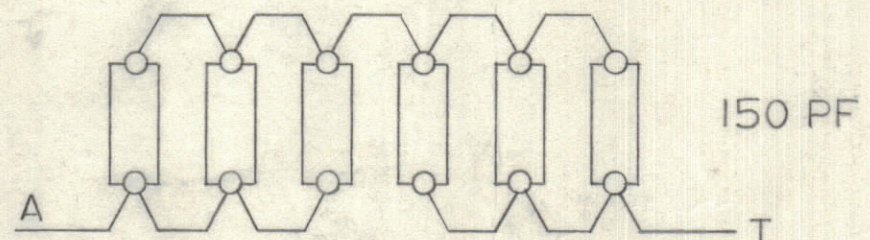
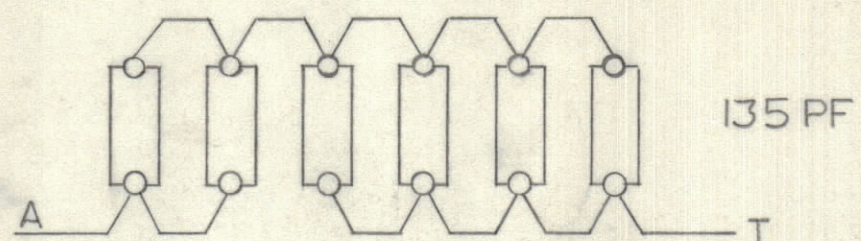
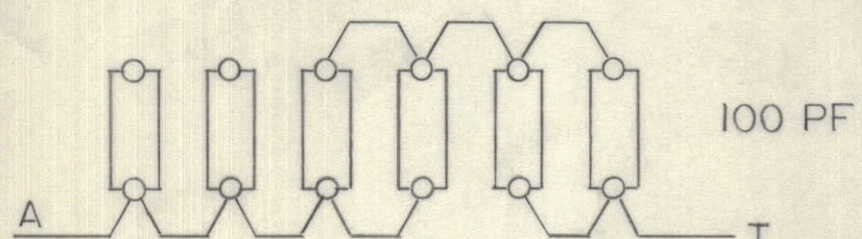
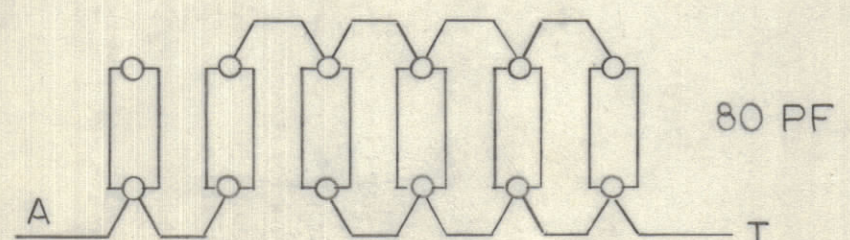
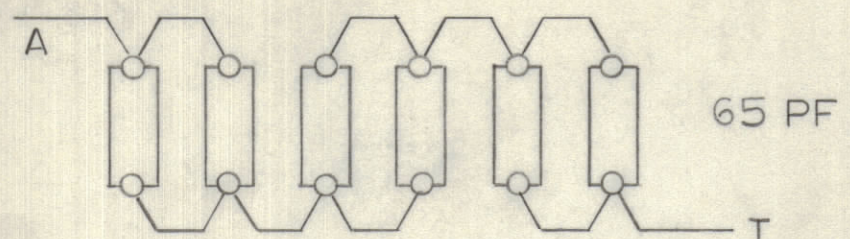
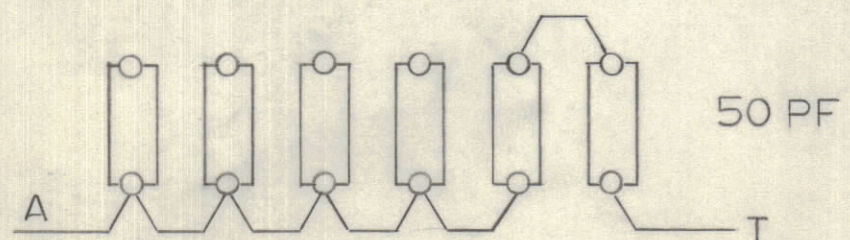
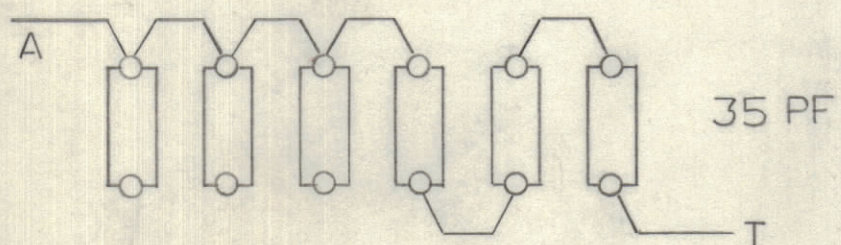
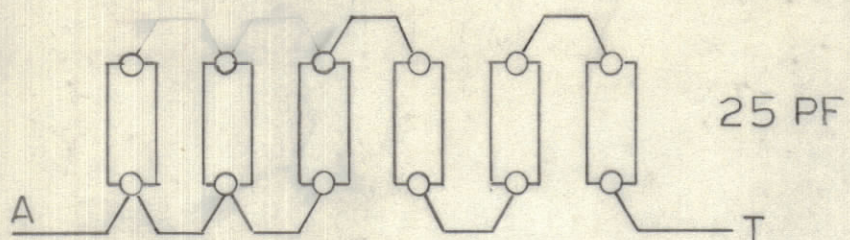
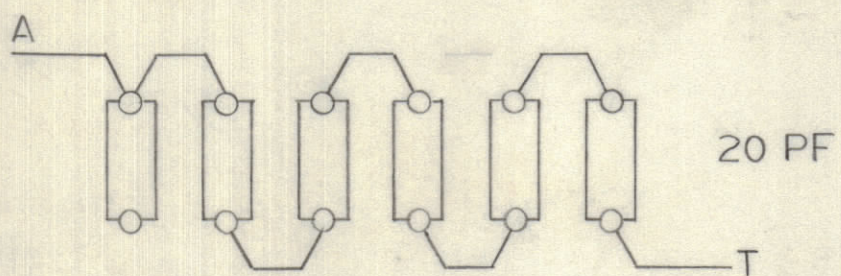
IF IT IS FOUND DESIRABLE TO CHANGE ANY TOLERANCE OR OTHER DETAIL SPECIFIED ON THIS DRAWING NOTIFY THE PURCHASER PROMPTLY.

DIMENSIONS IN INCHES UNLESS OTHERWISE SPECIFIED

MAXIMUM ALLOWABLE TOLERANCES HAVE BEEN DETERMINED AND DEVIATIONS WILL BE CAUSE FOR REJECTION. REMOVE ALL BURRS AND SHARP EDGES.

ISSUE	ITEM	CHANGED FROM	DATE	CH. NO.	DRAFTS	CHECKER	ENG. APP.

REQ.	ITEM	PART NO.	DESCRIPTION	SYMBOL



ID 10589  $\phi$

REF: A-10621

A - TO ANTENNA  
T - TO TRANSMITTER

TOLERANCES		SCALE:
ALL OTHERS	DEC. DIM. $\pm$ FRAC. DIM. $\pm$ ANGULAR DIM. $\pm$	DRILL, PUNCH, COMMERCIAL STOCK SIZES AND MANUFACTURERS TOLERANCES ARE NOT INCLUDED.

MODEL	C 10756	PROJECT NO.	ASS'Y. NO.	DATE	6 APR 67
USED ON					

STOCK SIZE		<b>TMC (Canada) LIMITED</b> OTTAWA ONTARIO <b>STRAPPING OPTIONS</b>			
MATERIAL	WEIGHT PER PC.				
TYPE & TEMPER		LANGER	MECH. DES. APP.		
HEAT TREAT. SPEC.		CHECKED	FINAL APPROVAL		
FINISH & SPEC. NO.		ID 10589 $\phi$			