

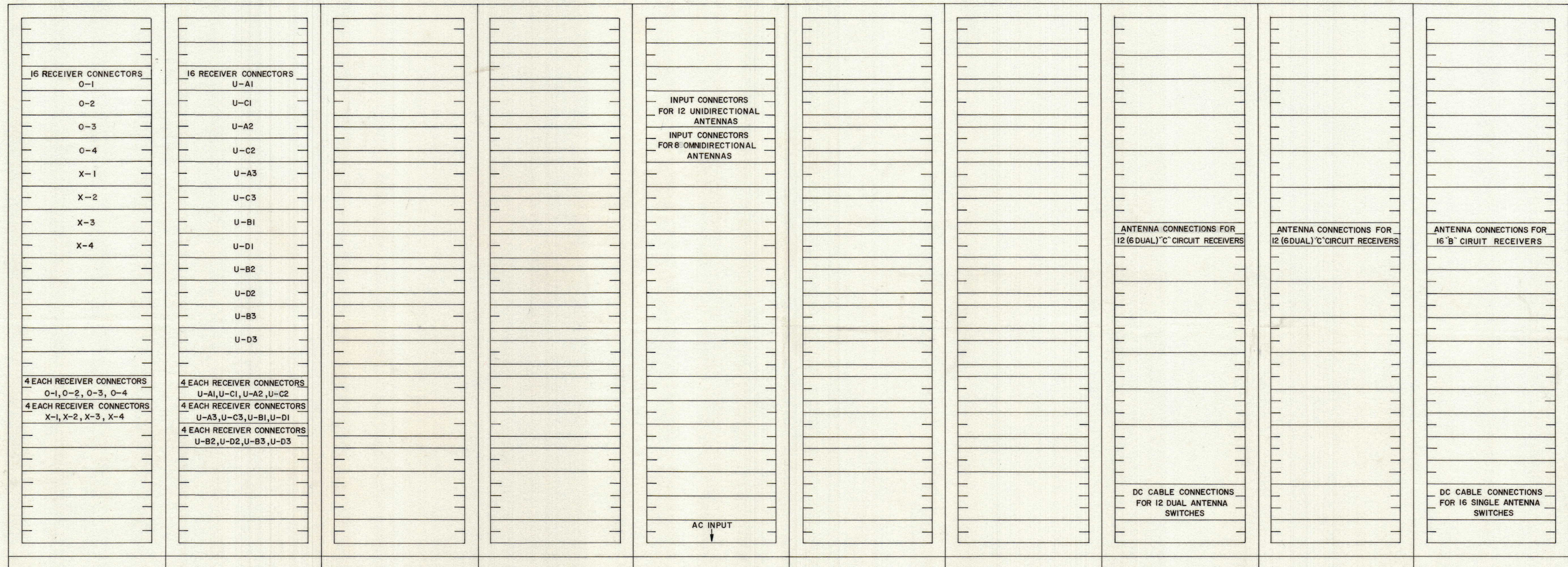
IF IT IS FOUND DESIRABLE TO CHANGE ANY TOLERANCE OR OTHER DETAIL SPECIFIED ON THIS DRAWING NOTIFY THE PURCHASER PROMPTLY.

MAXIMUM ALLOWABLE TOLERANCES HAVE BEEN DETERMINED AND DEVIATIONS WILL BE CAUSE FOR REJECTION. REMOVE ALL BURRS AND SHARP EDGES.

DIMENSIONS IN INCHES UNLESS OTHERWISE SPECIFIED

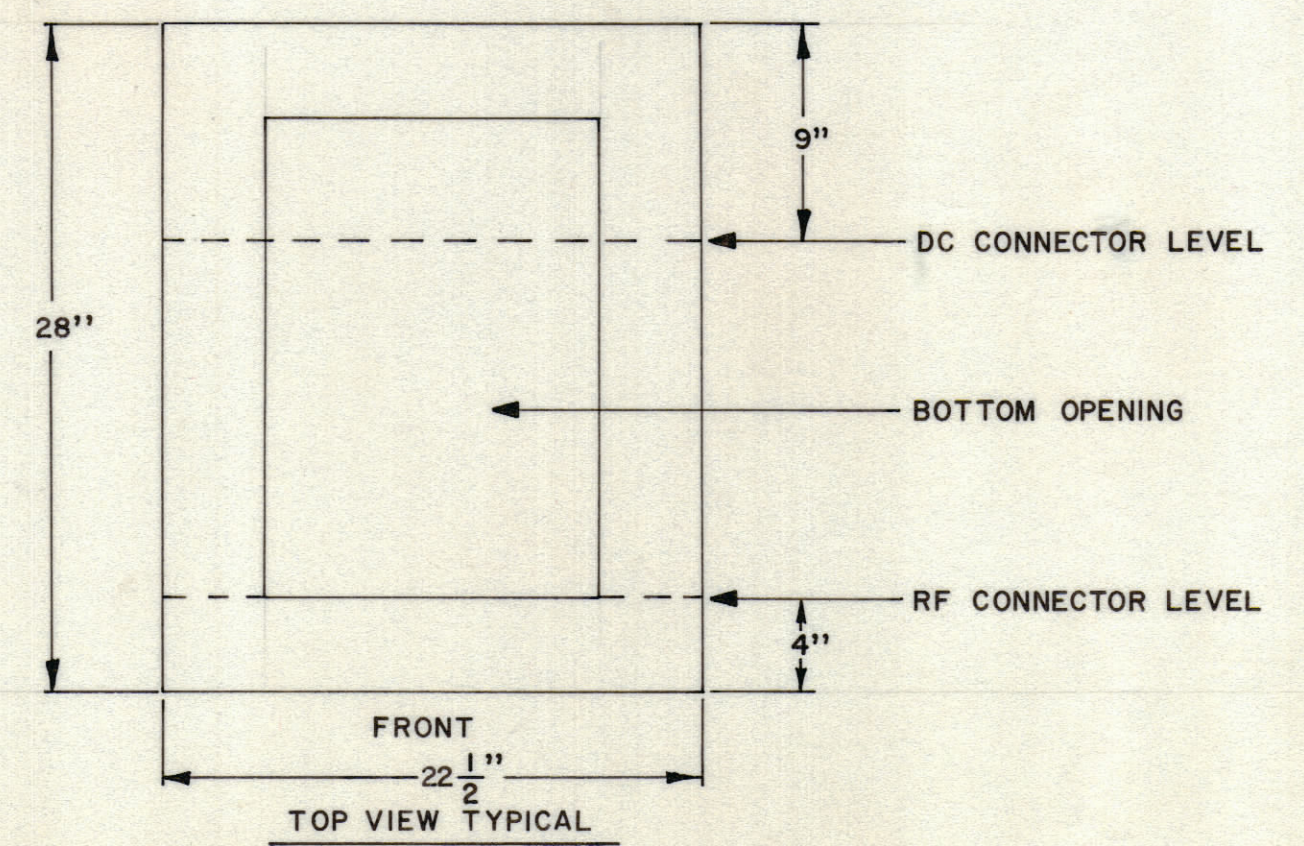
REQ. ITEM PART NO. DESCRIPTION SYMBOL

ISSUE	ITEM	CHANGED FROM	DATE	CN. NO.	DRAFTS	CHECKER	ENG. APP.
0		RELEASED FOR PROD.	15-8-64		RPL		



REAR ELEVATION EQUIPMENT LAYOUT

NOTE: VERTICAL HEIGHTS ARE SHOWN IN INCREMENTS OF 1 3/4"



TOLERANCES		SCALE: 1:2
ALL	DEC. DIM. ±	DRILL, PUNCH, COMMERCIAL STOCK SIZES AND MANUFACTURERS TOLERANCES ARE NOT INCLUDED
OTHERS	FRAC. DIM. ±	
	ANGULAR DIM. ±	

ACG 10001	050/66	12 - AUG. - 66
MODEL	PROJECT NO.	DATE
	ASSY. NO.	

**TMC (Canada) LIMITED**  
OTTAWA ONTARIO

EXTERNAL CONNECTING POINTS  
FOR ANTENNA CONTROL GROUP

RPL

CHECKED: LANGER  
FINAL APPROVAL: [Signature]

ID 10548