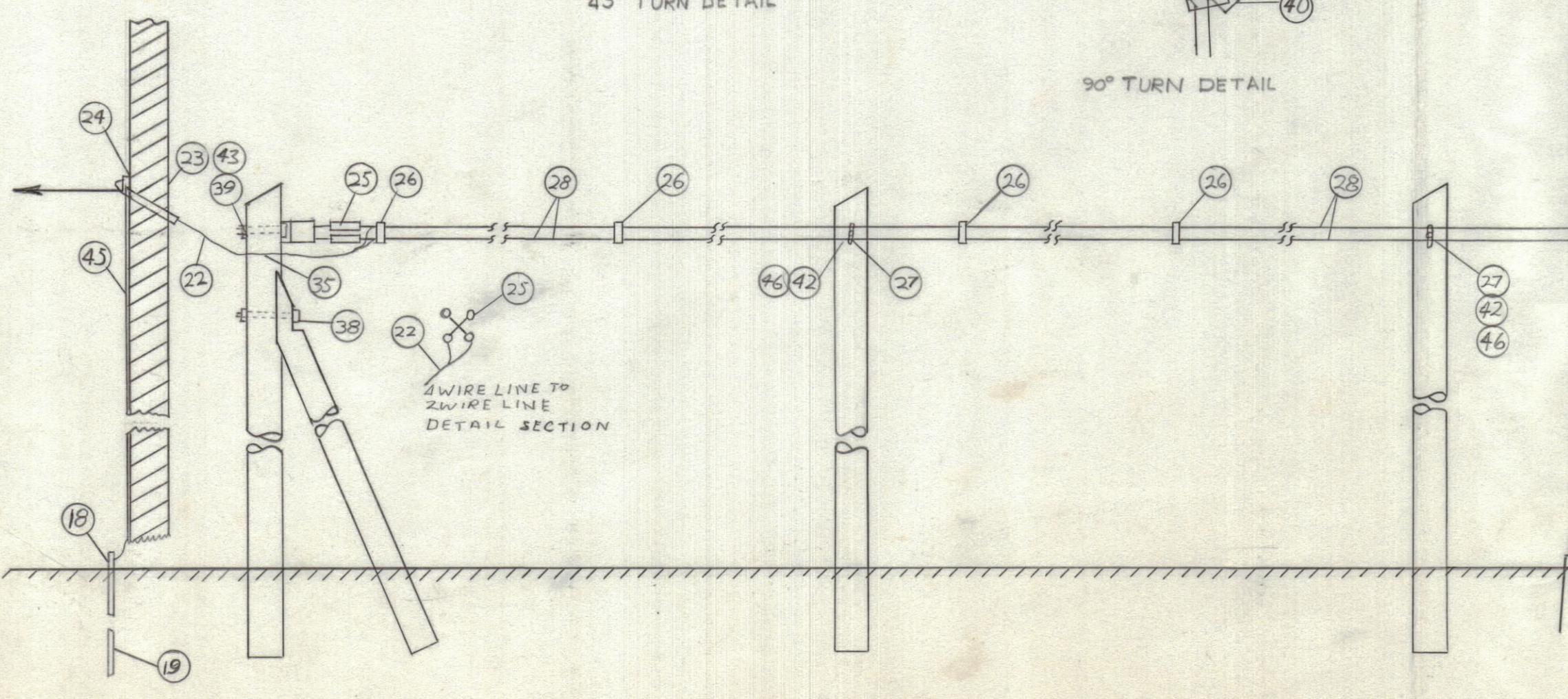
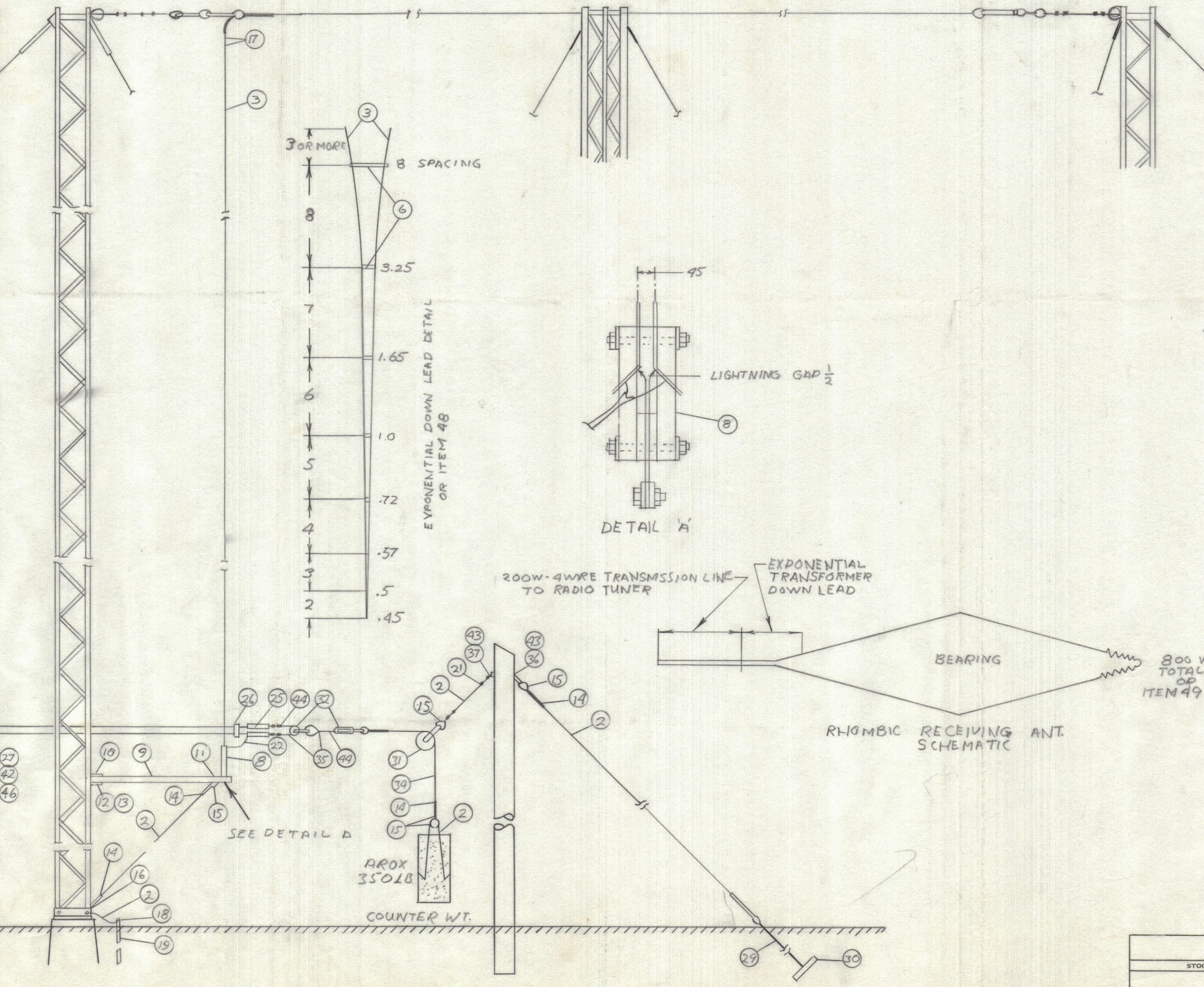
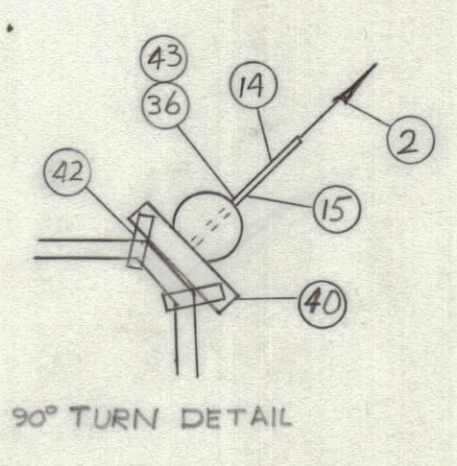
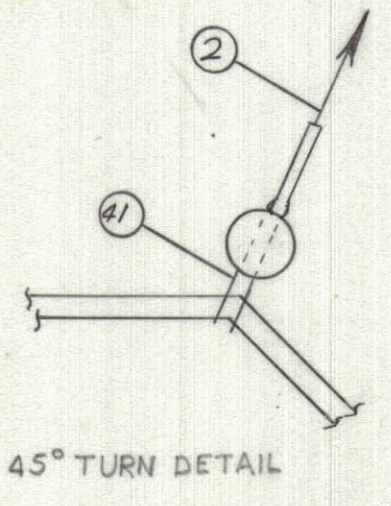
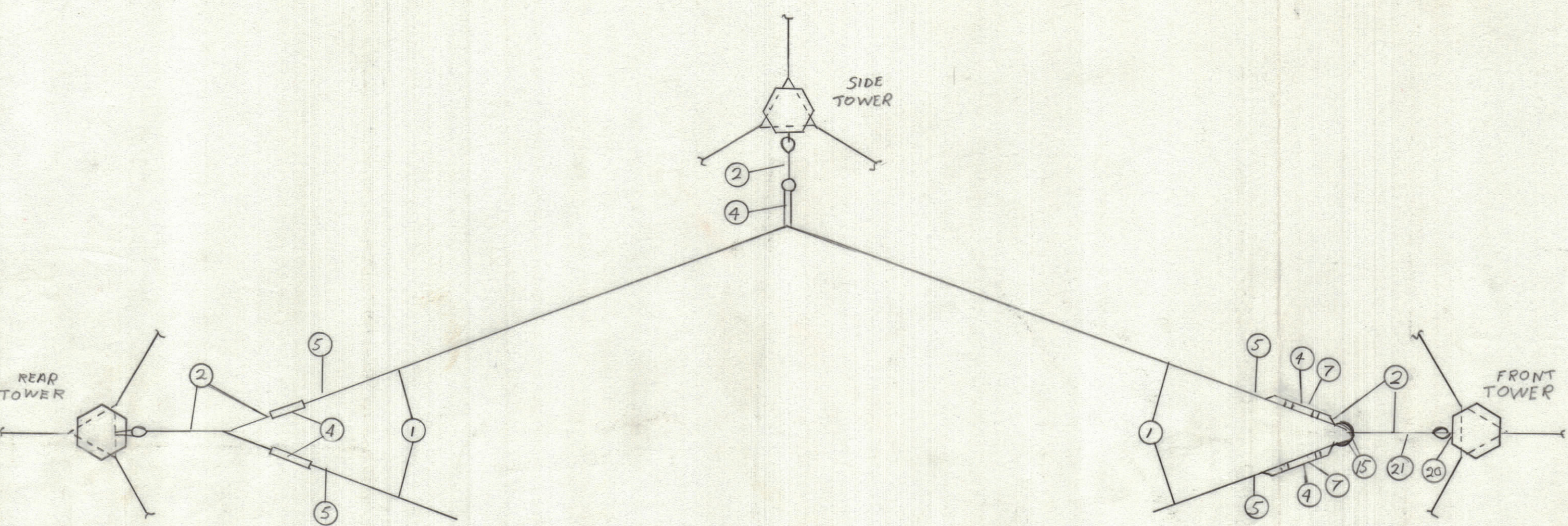
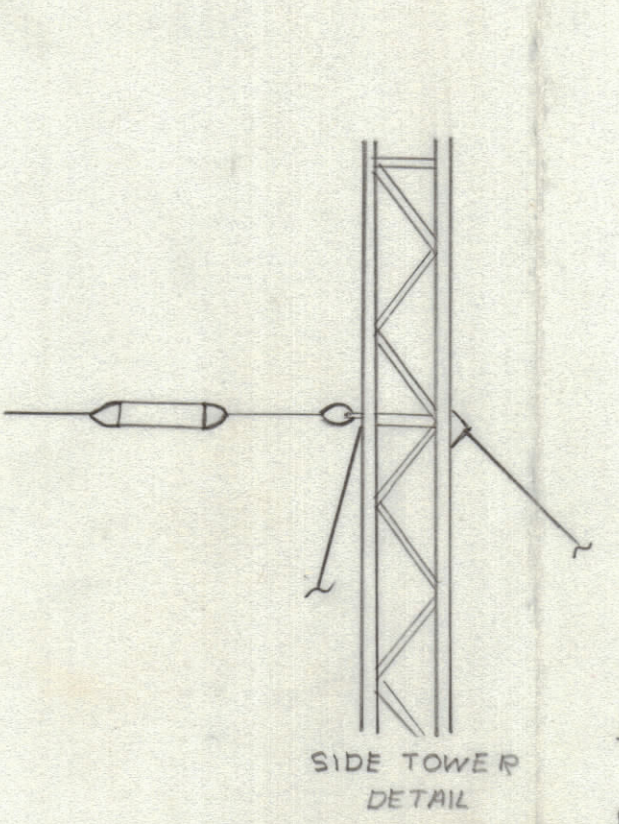
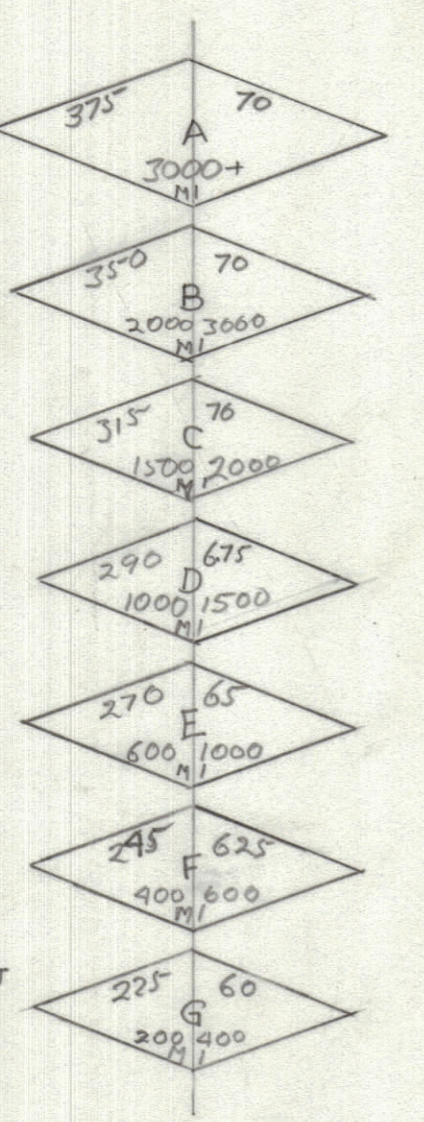
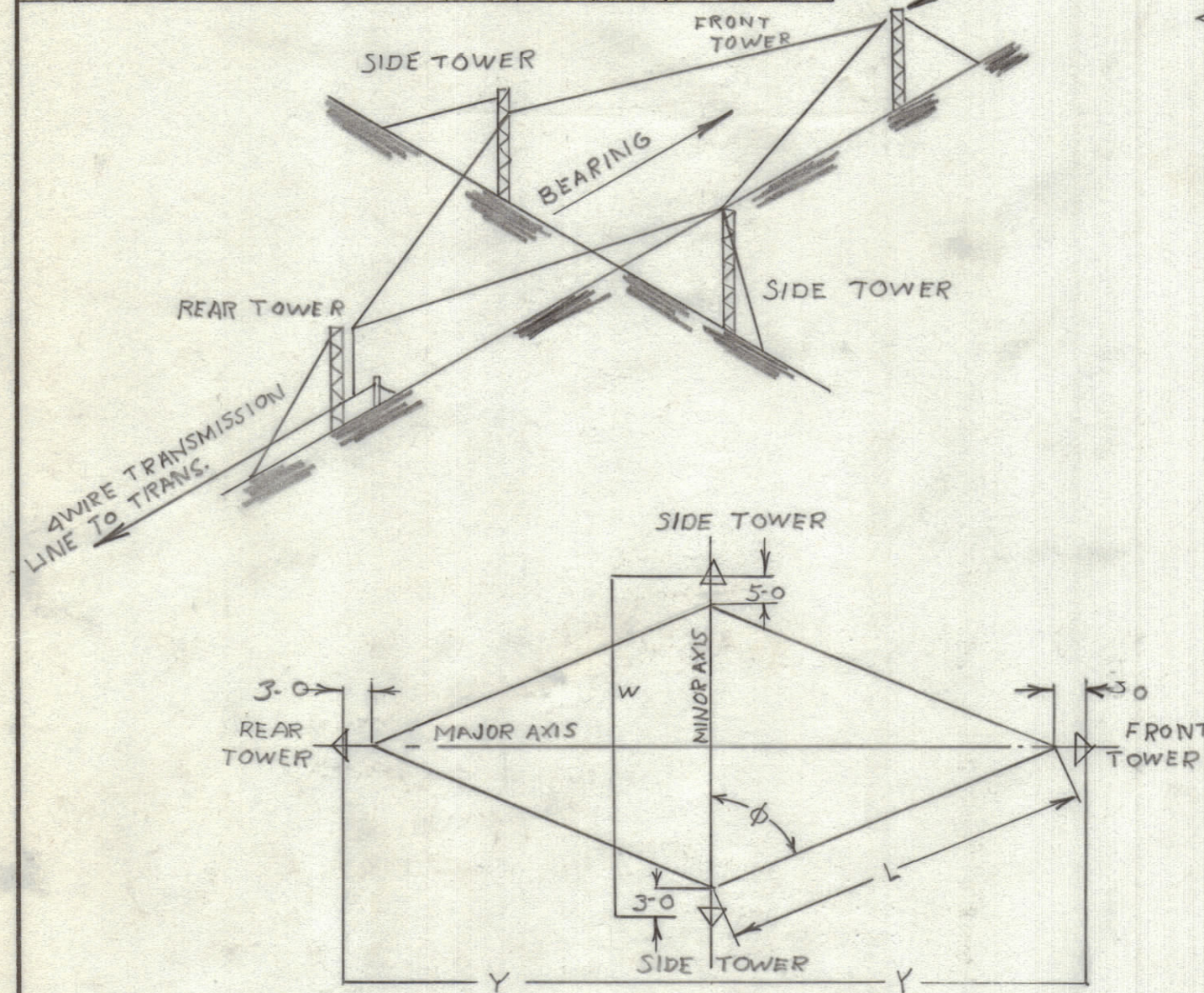


IF IT IS FOUND DESIRABLE TO CHANGE ANY TOLERANCE OR OTHER DETAIL SPECIFIED ON THIS DRAWING NOTIFY THE PURCHASER PROMPTLY.

MAXIMUM ALLOWABLE TOLERANCES HAVE BEEN DETERMINED AND DEVIATIONS WILL BE CAUSE FOR REJECTION. REMOVE ALL BURRS AND SHARP EDGES.

ISSUE ITEM CHANGED FROM DATE CN. NO. DRAFTS CHECKER ENG. APP.

DIMENSIONS IN INCHES UNLESS OTHERWISE SPECIFIED



REQ.	ITEM	PART NO.	DESCRIPTION	SYMBOL	Qty.
1			ANTENNA KIT		
1			Copperweld Wire 3#12 40% cond. H. S.		1600'
2			Guy Wire 1/4 - 1x7 GR. 180 Galv.		40'
3			Copper Insulator C. P. C. 22078		140'
4			Strain Insulator C. P. C. #12		4
5			Copperweld Guy Grip 3 #12		4
6	10494/7		Spreader Insulator Assembly		1 set
7			Resistor, 300 ohm, 10 W		2
8	10495		Connector Assembly		1
9	10496		Cross Arm Brace		2
10	12038		Special Tower Horizontal		1
11			Bolt 3/8 x 3" w/Nut		1
12			Bolt 1/2" x 1 1/4" w/Nut		2
13			Lockwasher 1/2"		2
14			Guy Grip 1/4 L.H.		2
15			Thimble 1/4"		12
16			Burdy Connector KC 20		1
17			Burdy Connector KS 20		4
18			Ground Rod Connector		1
19			Ground Rod 1/2" x 6'		1
20			Anchor Shackle 5/16"		6
21			1/4" Wire Rope Clip		32
			TRANSMISSION LINE KIT		
2			Guy Wire 1/4-1x7 Gr. 180 Galv.		50'
14			Guy Grip 1/4 L.H.		6
15			Thimble 1/4"		11
18			Ground Rod Connector		1
19			Ground Rod 1/2" x 6'		1
21			1/4" Wire Rope Clip		8
22			Tx Line, 2 Wire, 200 ohm		50'
23			Porcelain Tube 1" I. D. x 10" Lg.		1
24			Lightning Arrestor		1
25			Strain Insulator C. R. C. # 22325		8
26			Spacer Insulator C. P. C. # 23746		7
27			Spacer Insulator C. P. C. # 23065		8
28			Copperweld Wire #14 AWG		2200'
29			Anchor Rod 1/2" x 6'		2
30			Anchor Channel		2
31			"U" Cage Pulley (Wilkinson & Kompas#45)		1
32			Awning Pulley (Wilkinson & Kompas#17)		3
33			3/16" flexible Wire - Sash Cord		12'
34			1/4" Flexible Wire - Sash Cord		1
35			Screw Eye Insulator (Slater 2220)		5
36			Oval Eye Bolt w/Nut 5/8" x 12/16"		1
37			Oval Eye Nut (Slater 7502)		1
38			Bolt - 5/8" x 16" lg. (Slater 9816)		1
39			Bolt - 5/8" x 12" lg. (Slater 9812)		1
40	10498		Cross Arm		1
41	10497		Turnblock Line Support		3
42			Lag Screw 3/8" x 6" lg.		4
43			Curved Washer 5/8" (Slater Type K)		10
44			3/16" Wire Rope Clip		12
45			Staple 1 1/4 x 1/4 Spread Slater 8511		18
46			Lead Washer 7/16" x 1 x 5/64		4
47			#16 AWG Copper Wire soft drn.		10'
48	RAC-1		Rhombic Antenna Coupler		1
49	RTB-1		Rhombic Terminating Unit		1

TOLERANCES: ALL DEC. DIM. ± .005, ALL OTHERS ± .010, ANGULAR DIM. ± .010

SCALE: DRILL, PUNCH, COMMERCIAL STOCK SIZES AND MANUFACTURERS TOLERANCES ARE NOT INCLUDED

MODEL: PROJECT NO.: ASSY. NO.: DATE: SEPT. 67

TMC (Canada) LIMITED
 OTTAWA ONTARIO
 RHOMBIC RECEIVING ANT
 SINGLE WIRE
 R BARE
 DRAWN: ELEC. DES. APP.: MECH. DES. APP.:
 HEAT TREAT. SPEC.: CHECKED: FINAL APPROVAL: 1010328