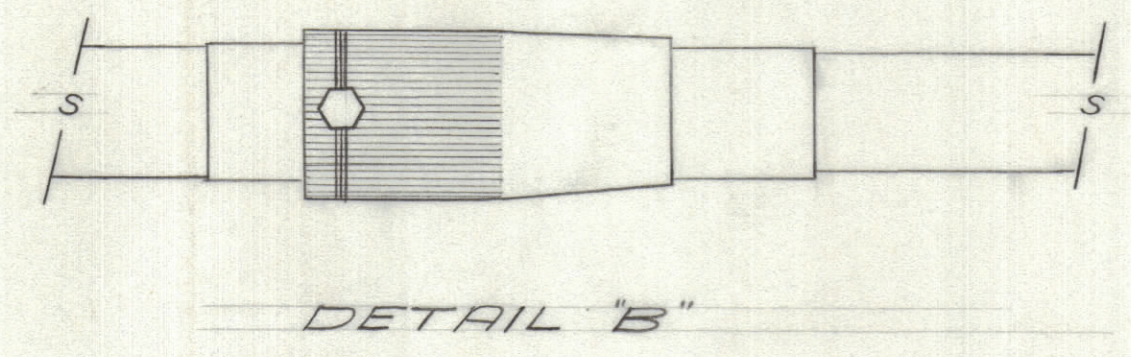
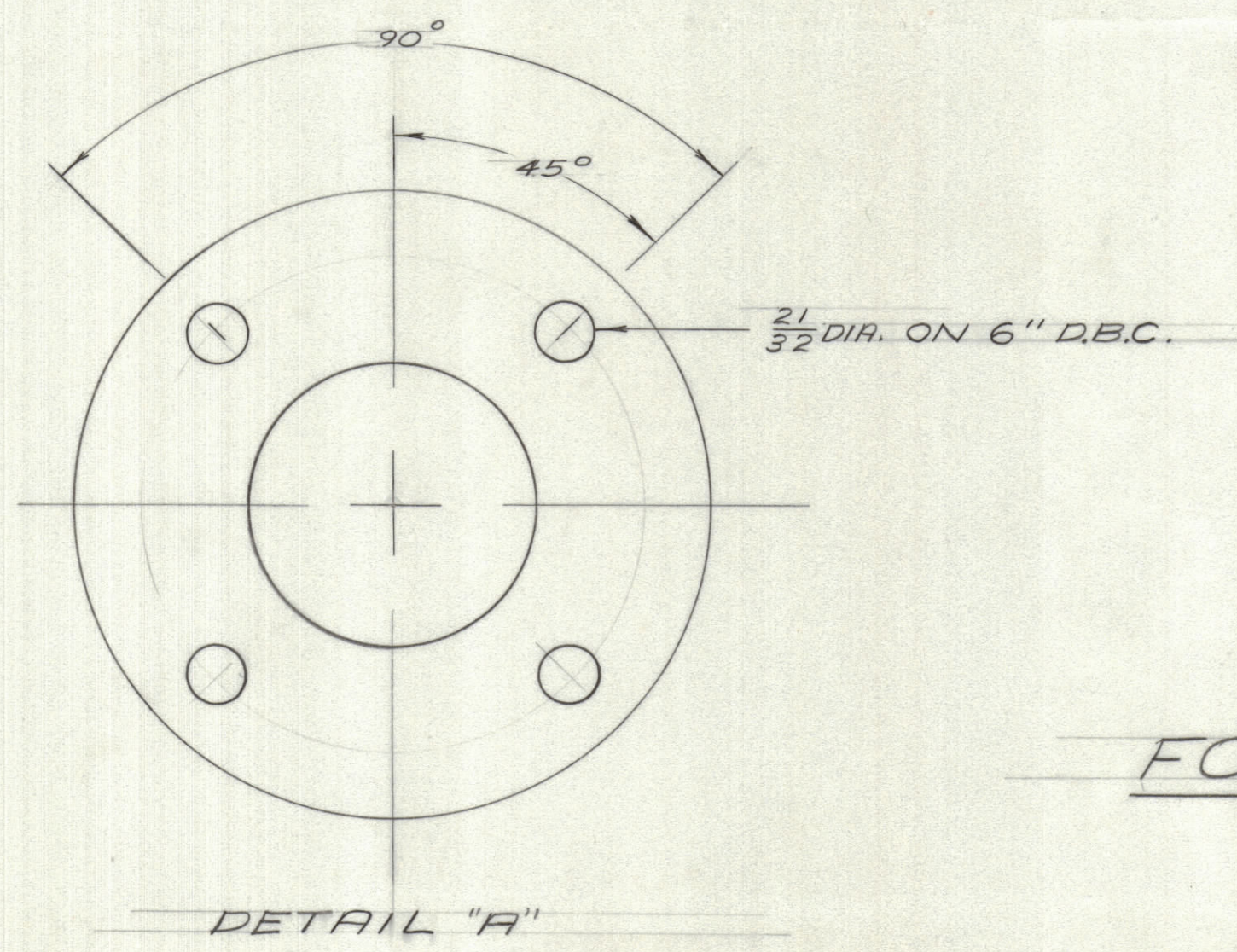
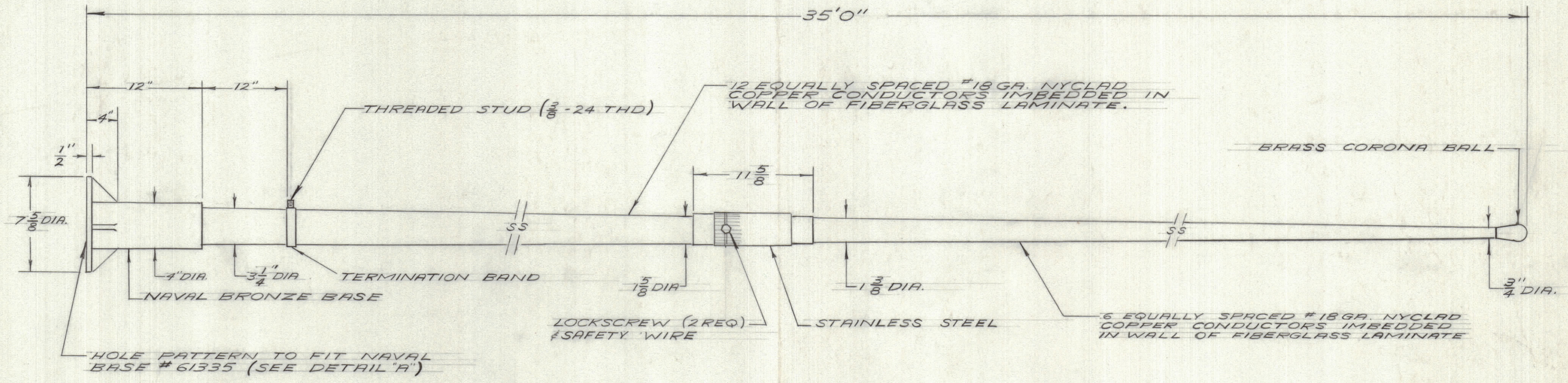


IF IT IS FOUND DESIRABLE TO CHANGE ANY TOLERANCE OR OTHER DETAIL SPECIFIED ON THIS DRAWING NOTIFY THE PURCHASER PROMPTLY.		DIMENSIONS IN INCHES UNLESS OTHERWISE SPECIFIED					
MAXIMUM ALLOWABLE TOLERANCES HAVE BEEN DETERMINED AND DEVIATIONS WILL BE CAUSE FOR REJECTION. REMOVE ALL BURRS AND SHARP EDGES.							
ISSUE	ITEM	CHANGED FROM	DATE	CN. NO.	DRAFTS	CHECKER	ENG. APP.

REQ.	ITEM	PART NO.	DESCRIPTION	SYMBOL
------	------	----------	-------------	--------



ID10327 Φ

FOR SALES DEPT. USE ONLY

COLUMBIA MANUFACTURER'S STYLE "222"

S10045-41

TOLERANCES		SCALE: <i>N.T.S.</i>
ALL OTHERS	DEC. DIM. \pm FRAC. DIM. \pm ANGULAR DIM. \pm	DRILL, PUNCH, COMMERCIAL STOCK SIZES AND MANUFACTURERS TOLERANCES ARE NOT INCLUDED.

MODEL	PROJECT NO.	ASS'Y. NO.	DATE
			3-9-64

STOCK SIZE		TMC (Canada) LIMITED OTTAWA ONTARIO	
MATERIAL		35' FIBERGLASS WHIP ANTENNA	
WEIGHT PER PC.		R.D. <i>J.M.</i>	
TYPE & TEMPER		ELEC. DES. APP. <i>J.M.</i>	
HEAT TREAT. SPEC.		MECH. DES. APP.	
FINISH & SPEC. NO.		CHECKED <i>TAC</i>	
		FINAL APPROVAL	
		ID10327 Φ	