

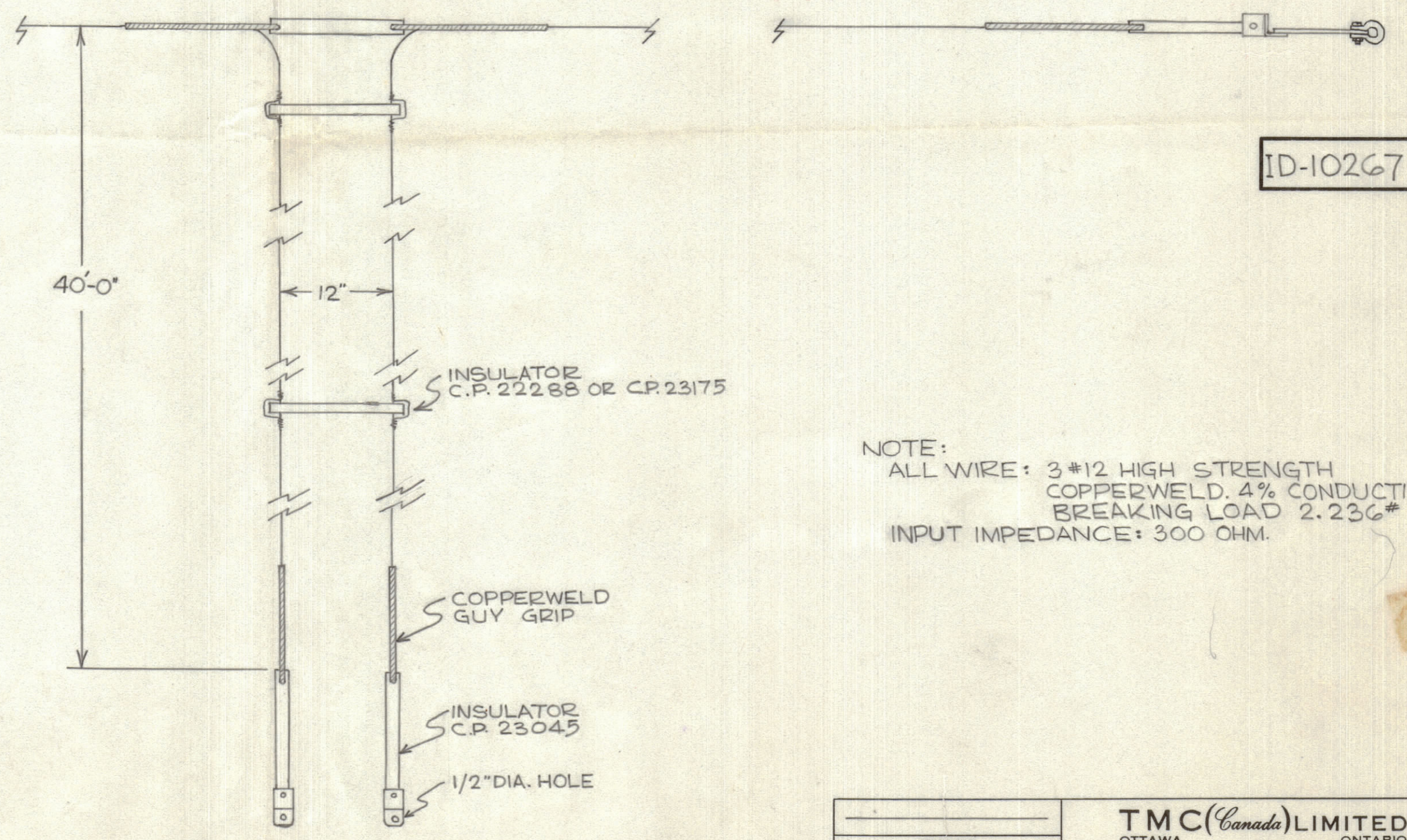
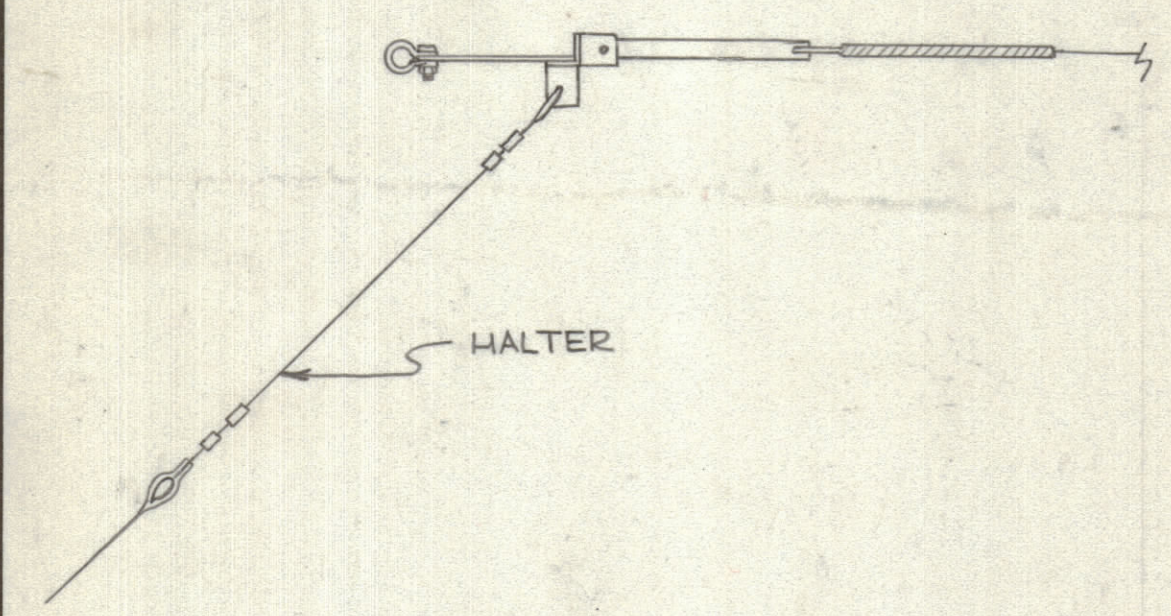
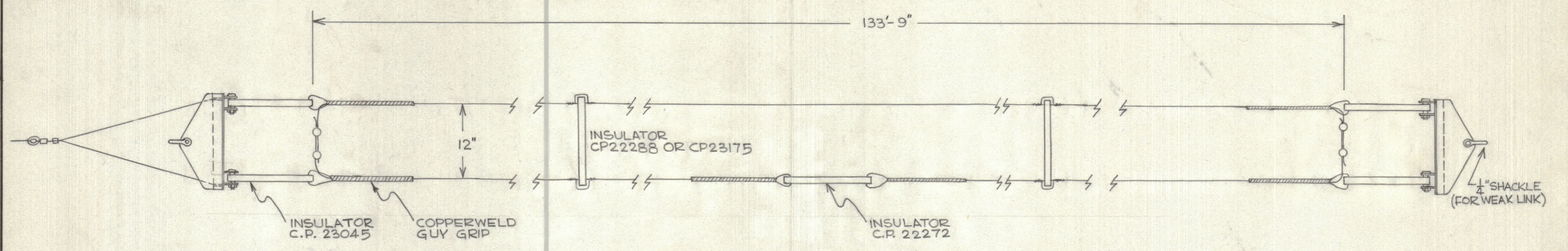
IF IT IS FOUND DESIRABLE TO CHANGE ANY TOLERANCE OR OTHER DETAIL SPECIFIED ON THIS DRAWING NOTIFY THE PURCHASER PROMPTLY.

DIMENSIONS IN INCHES UNLESS OTHERWISE SPECIFIED

MAXIMUM ALLOWABLE TOLERANCES HAVE BEEN DETERMINED AND DEVIATIONS WILL BE CAUSE FOR REJECTION. REMOVE ALL BURRS AND SHARP EDGES.

ISSUE	ITEM	CHANGED FROM	DATE	CN. NO.	DRAFTS	CHECKER	ENG. APP.

REQ.	ITEM	PART NO.	DESCRIPTION	SYMBOL



ID-10267

NOTE:
 ALL WIRE: 3 #12 HIGH STRENGTH COPPERWELD. 4% CONDUCTIVITY
 BREAKING LOAD 2.236#
 INPUT IMPEDANCE: 300 OHM.

TOLERANCES		SCALE:
ALL OTHERS	DEC. DIM. ± _____	DRILL, PUNCH, COMMERCIAL STOCK SIZES AND MANUFACTURERS TOLERANCES ARE NOT INCLUDED.
	FRAC. DIM. ± _____	
	ANGULAR DIM. ± _____	

MODEL	PROJECT NO.	ASS'Y. NO.	DATE
			13 Sept. 62

TMC (Canada) LIMITED OTTAWA ONTARIO			
2 WIRE DIPOLE ANTENNA			
STOCK SIZE			
MATERIAL	WEIGHT PER PC.		
TYPE & TEMPER		JPC	
HEAT TREAT. SPEC.		DRAWN	ELEC. DES. APP. <i>[Signature]</i>
FINISH & SPEC. NO.		CHECKED	MECH. DES. APP. <i>[Signature]</i>
			FINAL APPROVAL <i>[Signature]</i>
			ID-10267 <i>[Signature]</i>