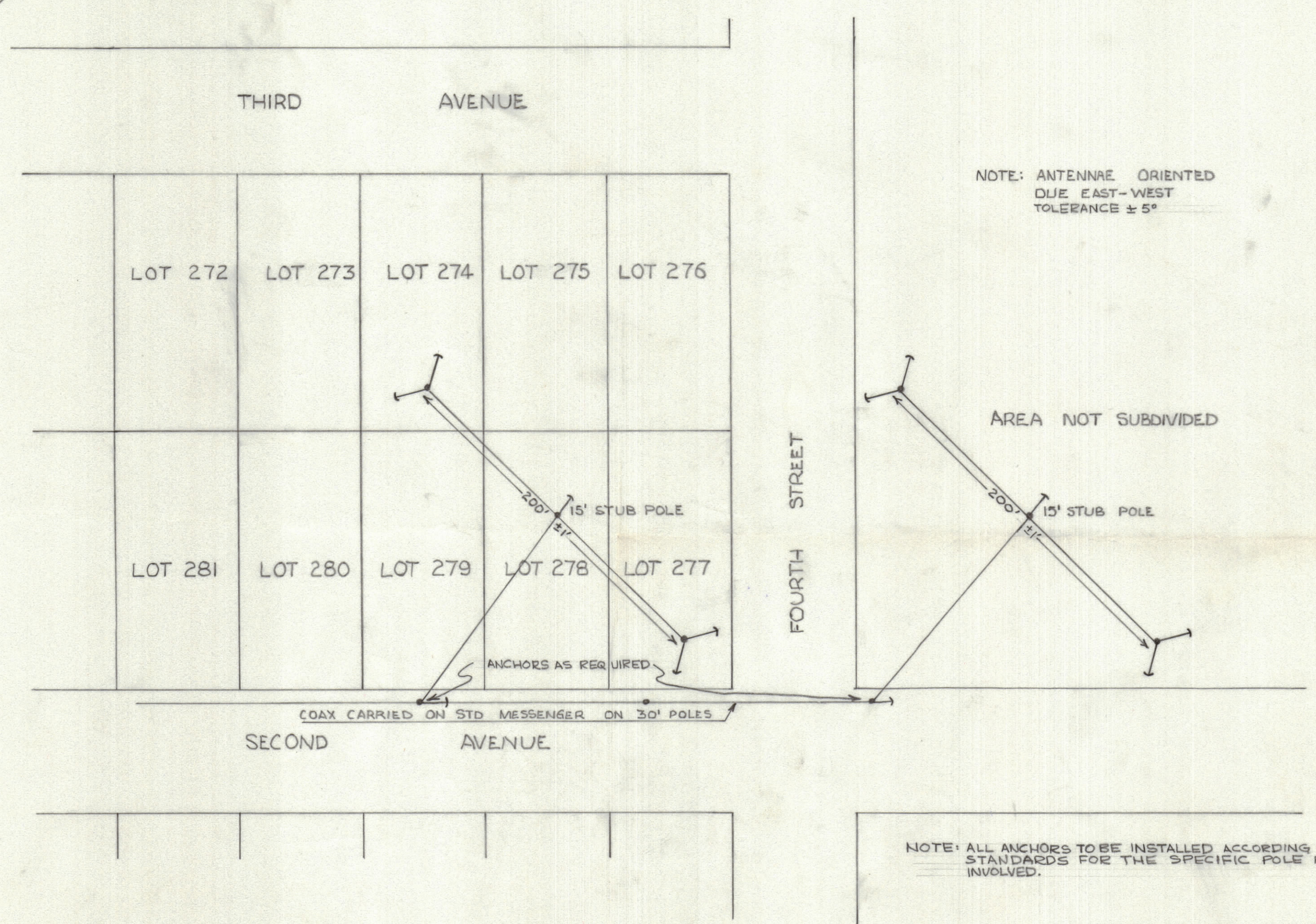
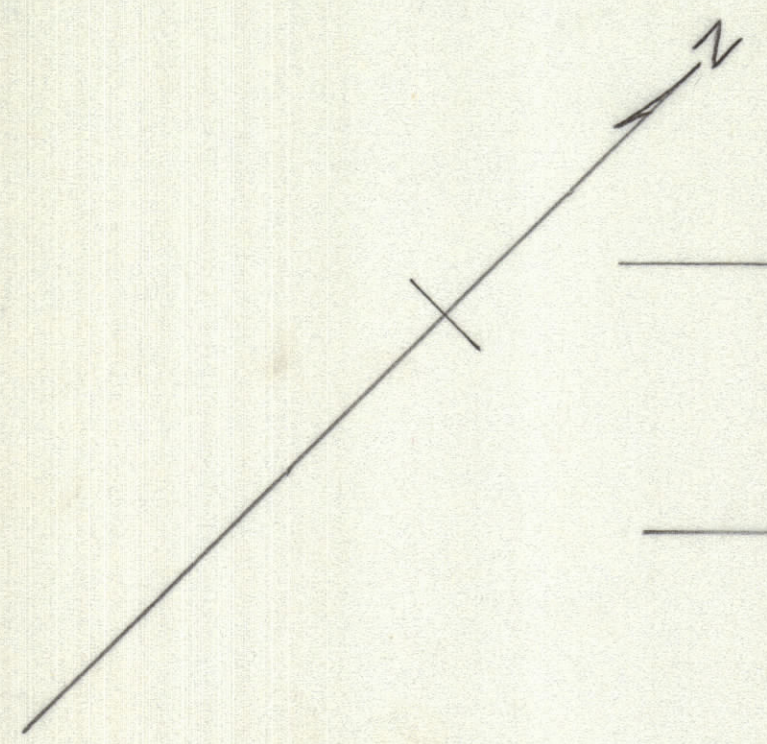


IF IT IS FOUND DESIRABLE TO CHANGE ANY TOLERANCE OR OTHER DETAIL SPECIFIED ON THIS DRAWING NOTIFY THE PURCHASER PROMPTLY.		DIMENSIONS IN INCHES UNLESS OTHERWISE SPECIFIED					
MAXIMUM ALLOWABLE TOLERANCES HAVE BEEN DETERMINED AND DEVIATIONS WILL BE CAUSE FOR REJECTION. REMOVE ALL BURRS AND SHARP EDGES.							
ISSUE	ITEM	CHANGED FROM	DATE	CN. NO.	DRAFTS	CHECKER	ENG. APP.

REQ.	ITEM	PART NO.	DESCRIPTION	SYMBOL
------	------	----------	-------------	--------



NOTE: ANTENNAE ORIENTED DUE EAST-WEST TOLERANCE  $\pm 5^\circ$

AREA NOT SUBDIVIDED

1D102630

NOTE: ALL ANCHORS TO BE INSTALLED ACCORDING TO CSA STANDARDS FOR THE SPECIFIC POLE HEIGHTS INVOLVED.

TOLERANCES		SCALE:
ALL OTHERS	DEC. DIM. $\pm$ FRAC. DIM. $\pm$ ANGULAR DIM. $\pm$	DRILL, PUNCH, COMMERCIAL STOCK SIZES AND MANUFACTURERS TOLERANCES ARE NOT INCLUDED.

MODEL	PROJECT NO.	ASS'Y. NO.	DATE
			14-6-62
USED ON			

STOCK SIZE		TMC (Canada) LIMITED OTTAWA ONTARIO	
MATERIAL		CHOICE FOR TWO POSSIBLE TX	
WEIGHT PER PC.		ANTENNA LOCATIONS - MOOSONEE	
SCALE 1"=50'		DRAWN: <i>[Signature]</i>	
TYPE & TEMPER		ELEC. DES. APP.:	MECH. DES. APP.:
HEAT TREAT. SPEC.		CHECKED: <i>[Signature]</i>	FINAL APPROVAL: <i>[Signature]</i>
FINISH & SPEC. NO.		1D102630	