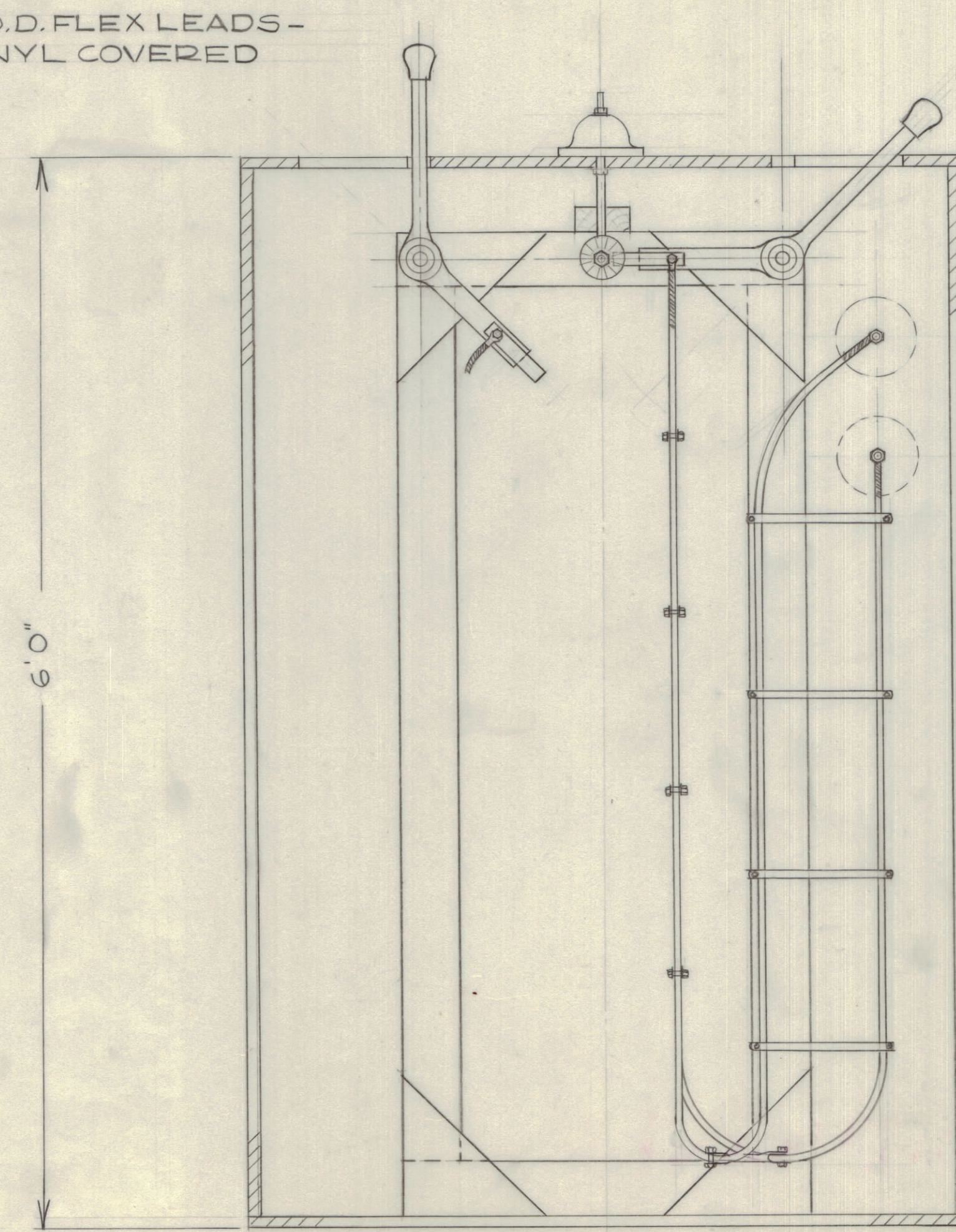


SIDE VIEW - SIDE REMOVED



NOTE:
ENCLOSURE MADE OF FIBREGLASS
MATERIAL SIMILAR TO THAT
USED ON TOC-1 CASE.

PROPOSED XMTR/ANTENNA SWITCH
1/8 SCALE DCM OCT 30/59

MA
Temporary Draw. *202*

NOTICE TO PERSONS RECEIVING THIS DRAWING
THE TECHNICAL MATERIEL CORPORATION claims
proprietary right in the material disclosed hereon.
This drawing is issued in confidence for engineering
information only and may not be reproduced or used
to manufacture anything shown hereon without per-
mission from THE TECHNICAL MATERIEL CORPORA-
TION to the user. This drawing is loaned for mutual
assistance and is subject to recall at any time.

Property of:
THE TECHNICAL MATERIEL CORPORATION
MANHATTAN, NEW YORK

1D10247