

IF IT IS FOUND DESIRABLE TO CHANGE ANY TOLERANCE OR OTHER DETAIL SPECIFIED ON THIS DRAWING NOTIFY THE PURCHASER PROMPTLY.

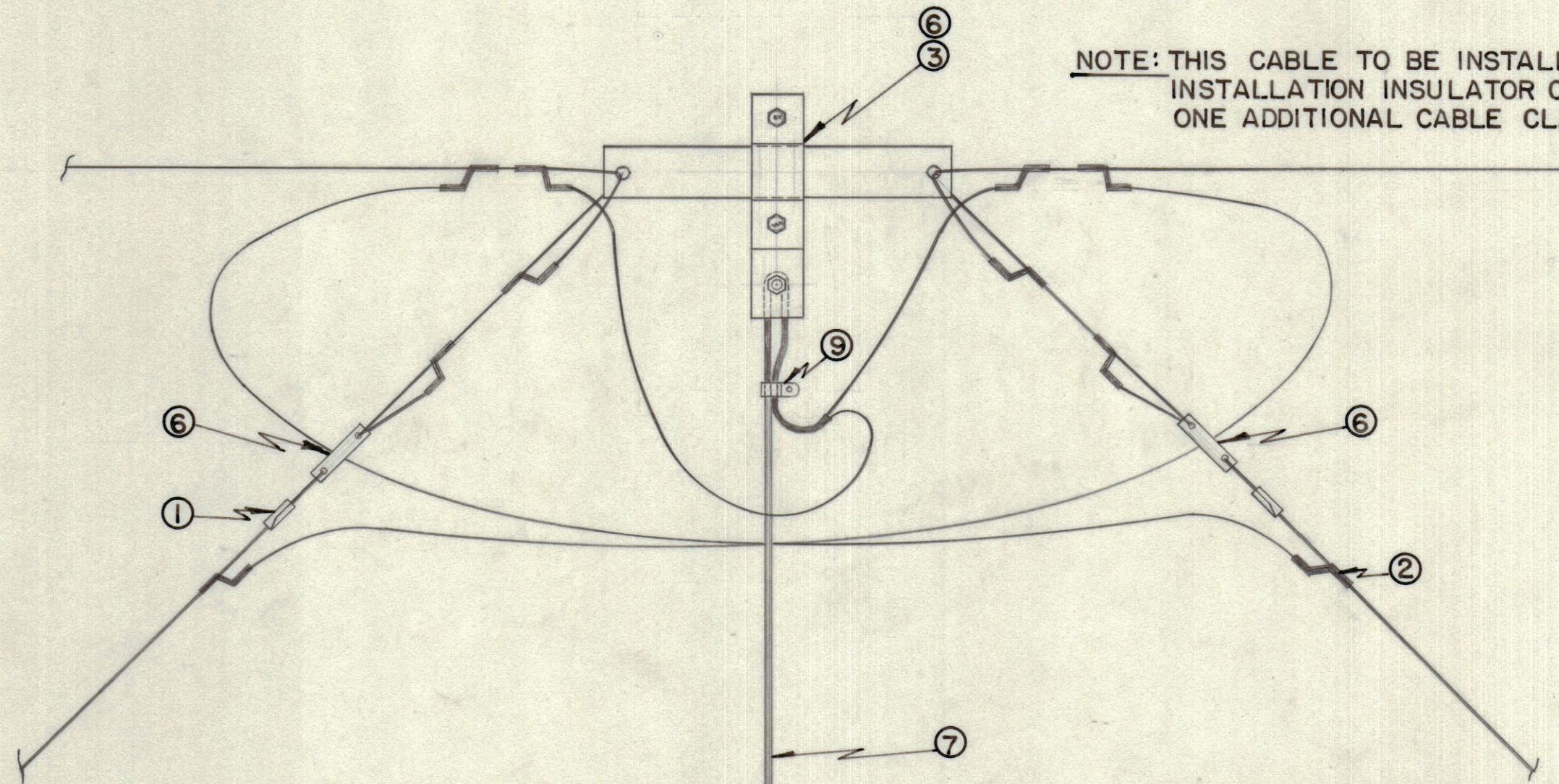
MAXIMUM ALLOWABLE TOLERANCES HAVE BEEN DETERMINED AND DEVIATIONS WILL BE CAUSE FOR REJECTION. REMOVE ALL BURRS AND SHARP EDGES

NOTICE TO PERSONS RECEIVING THIS DRAWING

THE TECHNICAL MATERIEL CORPORATION claims proprietary right in the material disclosed hereon. This drawing is issued in confidence for engineering information only and may not be reproduced or used to manufacture anything shown hereon without permission from THE TECHNICAL MATERIEL CORPORATION to the user. This drawing is loaned for mutual assistance and is subject to recall at any time.

Property of:
THE TECHNICAL MATERIEL CORPORATION
MAMARONECK, NEW YORK

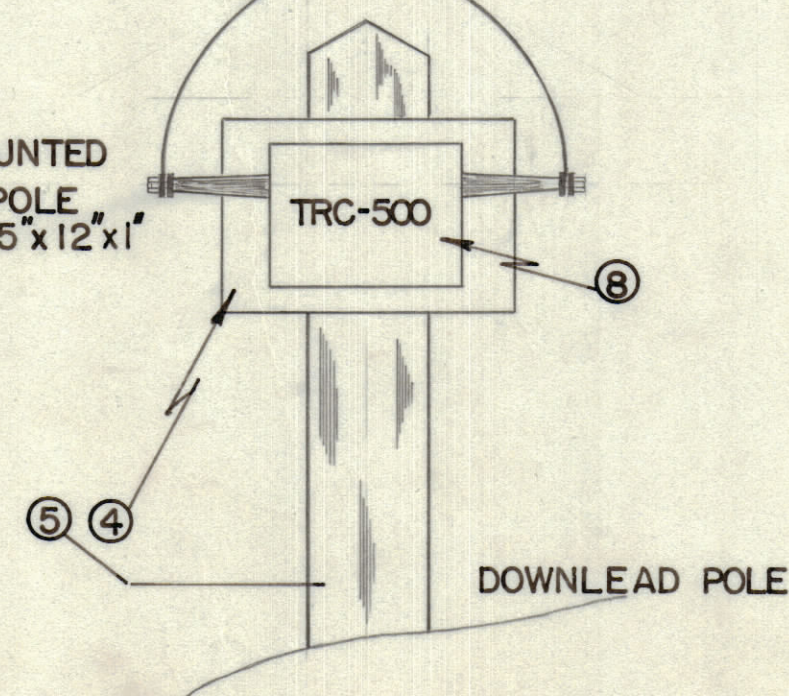
NOTE: THIS CABLE TO BE INSTALLED WITH INSTALLATION INSULATOR CLAMPS & ONE ADDITIONAL CABLE CLAMP.



NOTE: FOR COMPLETE INSTALLATION OF DOUBLE DOUBLET ANTENNA SEE DRNG. NO ID-10109A MOUNTING OF TRC-500 TO DOWNLEAD POLE IS CUSTOMER'S OWN RESPONSIBILITY.

SPLIT AMPHENOL TWIN LEAD FOR A LENGTH OF APPROX. 2 FEET

NOTE TRC-500 IS MOUNTED TO DOWNLEAD POLE ON A PIECE OF 15"x12"x1" WOOD PLATE.



REQ.	ITEM	PART NO.	DESCRIPTION	SYMBOL
1	9		CABLE CLAMP	
1	8		TRC-500	
	7	NO-14-076	AMPHENOL TWIN LEAD	
3	6	NS 10 002	INSULATOR	
1	5		DOWNLEAD POLE	
1	4		WOOD PLATE 15"x12"x1"	
1	3	MS-10 163	BRACKET	
10	2	SLATER74 52	SERVISLEEVE	
2	1	SLATER9H62P	NICOPRESS SLEEVE	

TMC (Canada) LIMITED OTTAWA ONTARIO	
DOUBLE DOUBLET ANTENNA ACCESSORY TRC-500	
STOCK SIZE	
MATERIAL	WEIGHT PER PC.
TYPE & TEMPER	
HEAT TREAT. SPEC.	
FINISH & SPEC. NO.	
DRAWN: <i>M. Roeder</i>	ELEC. DES. APP. / MECH. DES. APP.
CHECKED: <i>MS</i>	FINAL APPROVAL: <i>[Signature]</i>
ID-10190	

ISSUE	ITEM	CHANGED FROM	DATE	CN. NO.	DRAFTS	CHECKER	ENG. APP.
TOLERANCES							
SCALE: NON				DRILL, PUNCH, COMMERCIAL STOCK SIZES AND MANUFACTURERS TOLERANCES ARE NOT INCLUDED.			
ALL OTHERS	DEC. DIM. ±	FRAC. DIM. ±	ANGULAR DIM. ±				

MODEL	PROJECT NO.	ASS'Y. NO.	DATE
			04/21/58
USED ON			

ID-10190