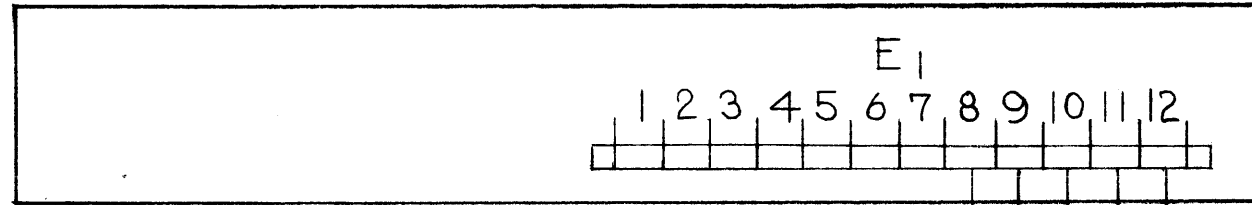


IF IT IS FOUND DESIRABLE TO CHANGE ANY TOLERANCE OR OTHER DETAIL SPECIFIED ON THIS DRAWING NOTIFY THE PURCHASER PROMPTLY.

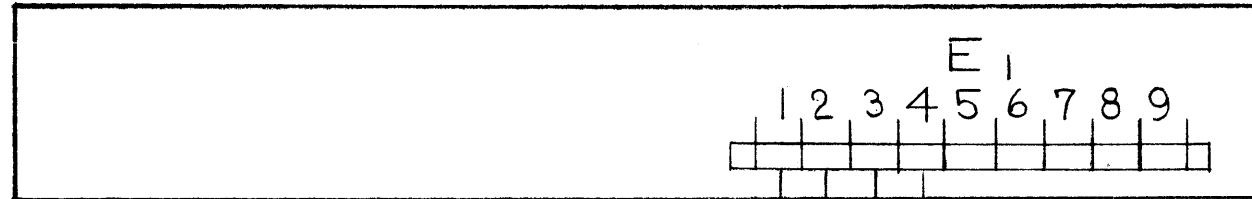
MAXIMUM ALLOWABLE TOLERANCES HAVE BEEN DETERMINED AND DEVIATIONS WILL BE CAUSE FOR REJECTION. REMOVE ALL BURRS AND SHARP EDGES

ID-103



LPP

YELLOW
BROWN
BLUE
VIOLET
ORANGE



CFA

WHITE
GREY
GREEN
BLACK



BFP-1

ORANGE
VIOLET
GREY
WHITE
YELLOW
BLUE
BROWN
BLACK
GREEN

CA-112

NOTE: NONE OF THE WIRING OF THE DDR-2 RACK IS DISTURBED BY THE ADDITION OF THE BFP-1. THE UNIT AND CABLE ARE ADDED TO THE PRESENT EQUIPMENT AS PER THIS INSTALLATION DIAGRAM.

REQ.	ITEM	PART NO.	DESCRIPTION	SYMBOL
		#	THE TECHNICAL MATERIEL CORP.	
		STOCK SIZE	MAMARONECK. NEW YORK	
		#	INSTALLATION DIAGRAM	
		MATERIAL		
		WEIGHT PER PC.		
		#		
		TYPE & TEMPER	C.D.O. 8-21-52	A. J. J. <i>8/12/69</i>
		#	DRAWN	ELEC. DES. APP. MECH. DES.
		HEAT TREAT. SPEC.	AD 8-21-52	<i>8/12/69</i>
		#	CHECKED	FINAL APPROVAL
		FINISH & SPEC. NO.		

ISSUE	ITEM	ORIGINAL RELEASE	DATE	CN. NO.	DRAFTS	CHECKER	ENG. APP.
		CHANGED FROM					
TOLERANCES		SCALE:					
ALL OTHERS	DEC. DIM. ± FRAC. DIM. ± ANGULAR DIM. ±	DRILL, PUNCH, COMMERCIAL STOCK SIZES AND MANUFACTURERS TOLERANCES ARE NOT INCLUDED.					

BFP-1	121		8-21-52
MODEL	PROJECT NO.	ASS'Y. NO.	DATE

USED ON

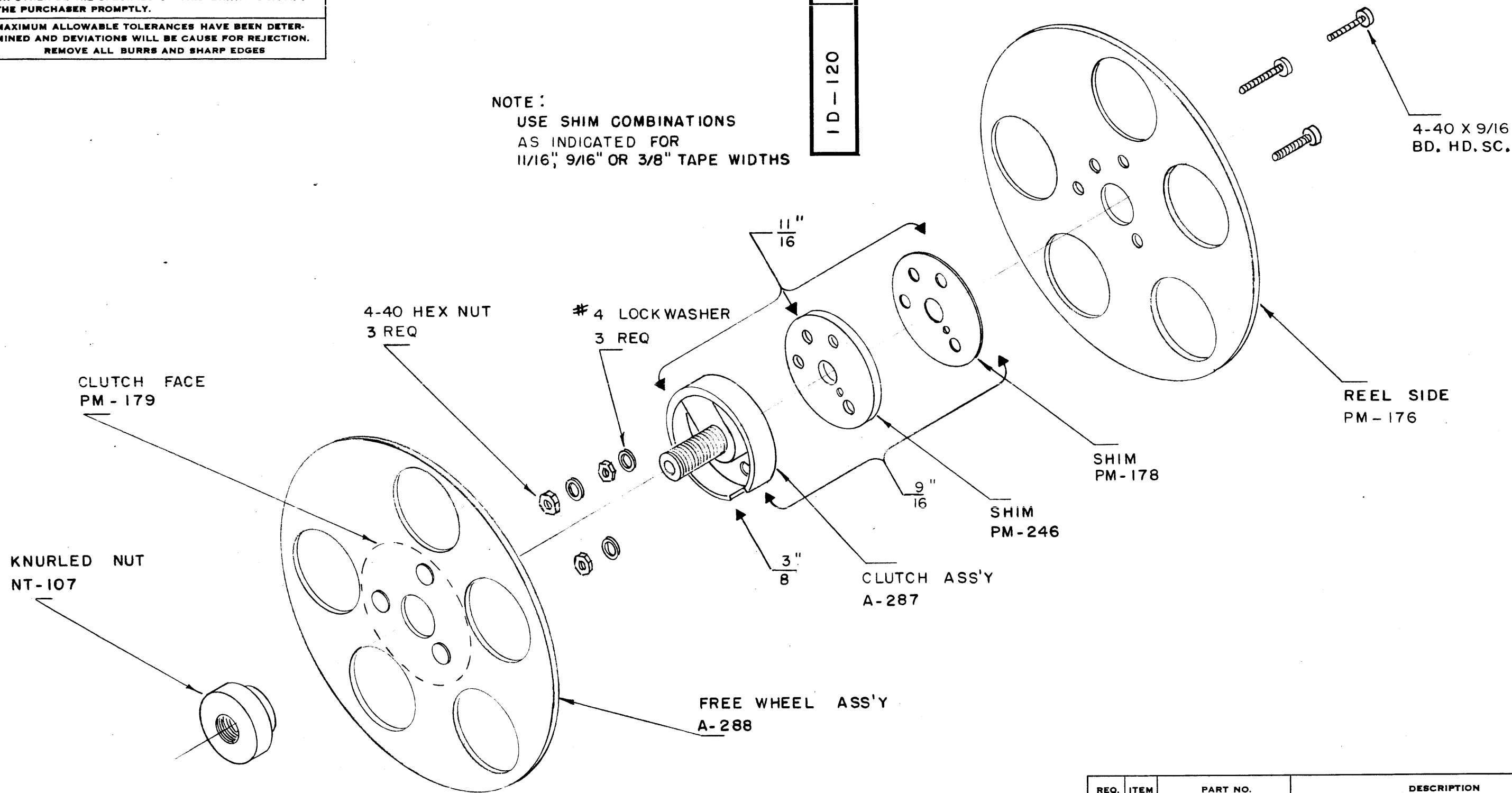
ID-103

IF IT IS FOUND DESIRABLE TO CHANGE ANY TOLERANCE OR OTHER DETAIL SPECIFIED ON THIS DRAWING NOTIFY THE PURCHASER PROMPTLY.

MAXIMUM ALLOWABLE TOLERANCES HAVE BEEN DETERMINED AND DEVIATIONS WILL BE CAUSE FOR REJECTION. REMOVE ALL BURRS AND SHARP EDGES

B
ID-120

NOTE:
USE SHIM COMBINATIONS AS INDICATED FOR 11/16", 9/16" OR 3/8" TAPE WIDTHS



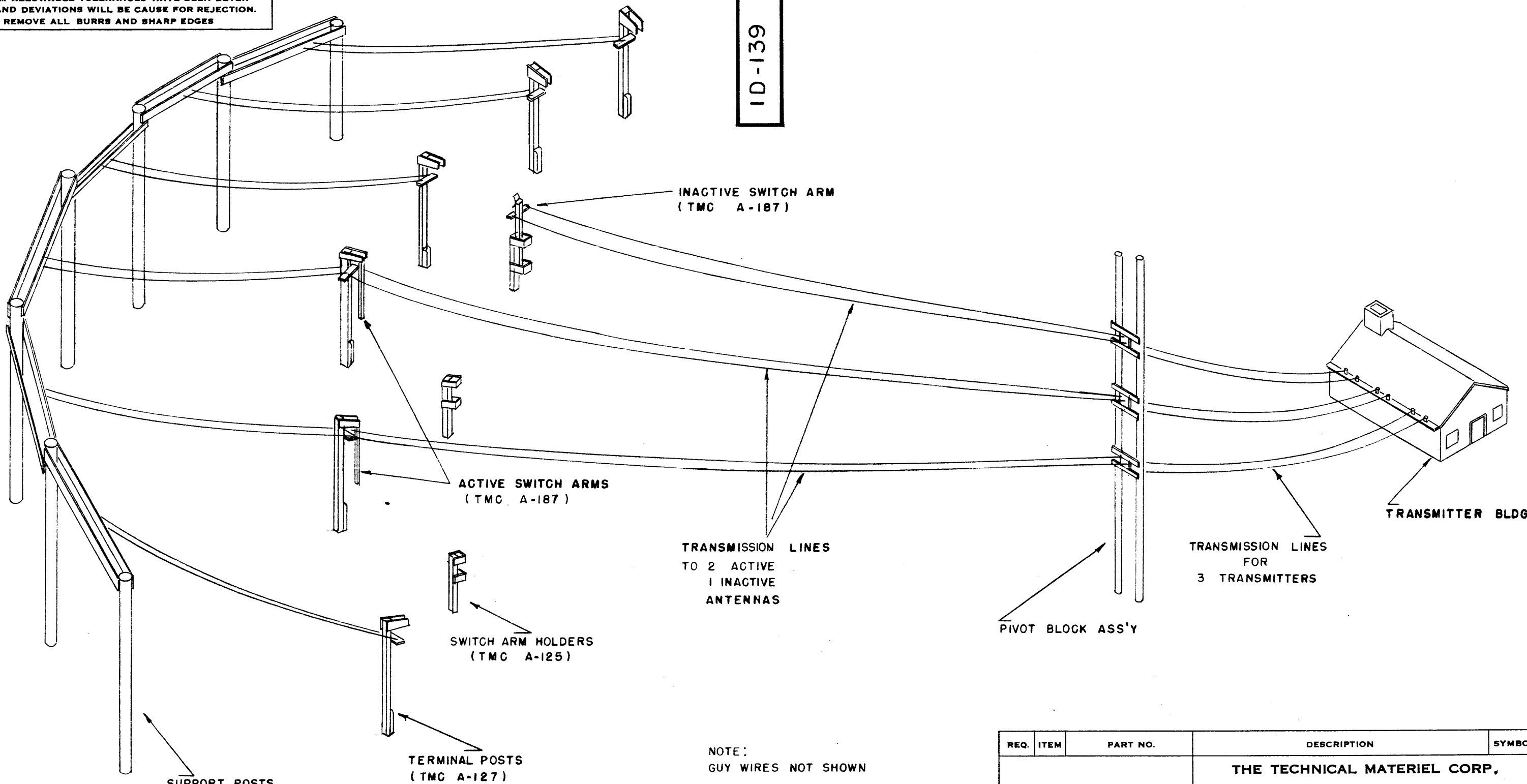
REQ.	ITEM	PART NO.	DESCRIPTION	SYMBOL
			THE TECHNICAL MATERIEL CORP. MAMARONECK. NEW YORK	
		STOCK SIZE	INSTALLATION OF SHIMS	
		MATERIAL	FOR USE WITH 11/16", 9/16" OR 3/8" TAPE WIDTHS	
		WEIGHT PER PC.		
		TYPE & TEMPER	DRAWN <i>JAD</i> 7-28-53	
		HEAT TREAT. SPEC.	ELEC. DES. APP. <i>[Signature]</i> MECH. DES. APP. <i>[Signature]</i>	
		FINISH & SPEC. NO.	CHECKED <i>[Signature]</i> FINAL APPROVAL <i>[Signature]</i>	
			ID-120 B	

B	1	SHIM NOTE ADDED	10/5/56	2	JAD	CSB	A.J.J.
A	1	4-40 WAS 6-32	7-29-53	1	JAD	CSB	A.J.J.
ISSUE	ITEM	CHANGED FROM	DATE	CN. NO.	DRAFTS	CHECKER	ENG. APP.
TOLERANCES		SCALE: $\frac{1}{2}$ " = 1"					
ALL OTHERS	DEC. DIM. \pm FRAC. DIM. \pm ANGULAR DIM. \pm	DRILL, PUNCH, COMMERCIAL STOCK SIZES AND MANUFACTURERS TOLERANCES ARE NOT INCLUDED.					
CK-2	MODEL	PROJECT NO.	ASS'Y. NO.	DATE	7-28-53		
USED ON							

IF IT IS FOUND DESIRABLE TO CHANGE ANY TOLERANCE OR OTHER DETAIL SPECIFIED ON THIS DRAWING NOTIFY THE PURCHASER PROMPTLY.

MAXIMUM ALLOWABLE TOLERANCES HAVE BEEN DETERMINED AND DEVIATIONS WILL BE CAUSE FOR REJECTION. REMOVE ALL BURRS AND SHARP EDGES

ID-139

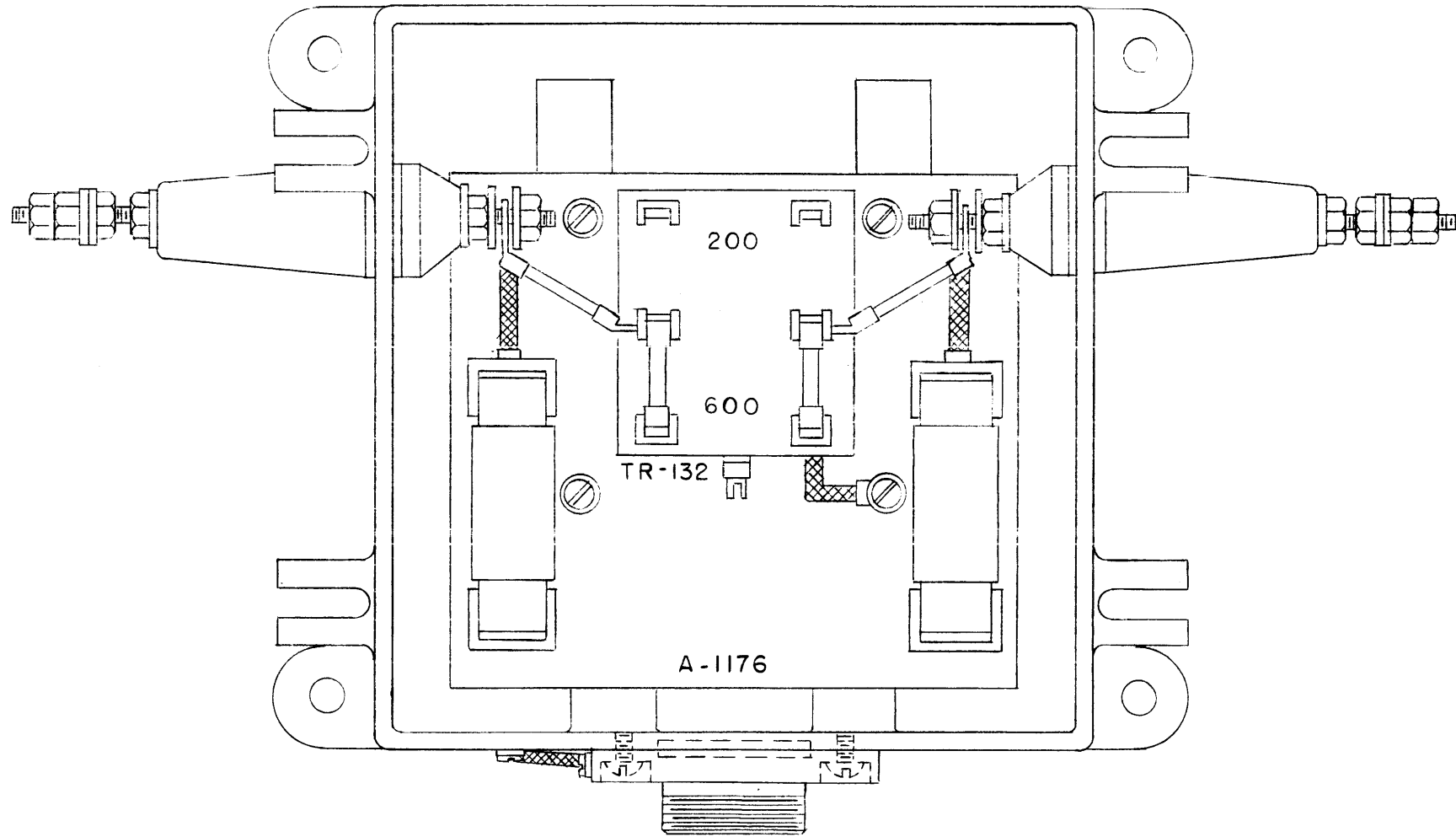


NOTE:
GUY WIRES NOT SHOWN

REQ.	ITEM	PART NO.	DESCRIPTION	SYMBOL
			THE TECHNICAL MATERIEL CORP, MAMARONECK. NEW YORK	
STOCK SIZE			A TYPICAL SWITCHING STATION INSTALLATION	
MATERIAL			OF 3 TRANSMITTERS USING 6 ANTENNAS	
WEIGHT PER PC.				
TYPE & TEMPER			<i>JAG</i> 12-27-54 DRAWN ELEC. DES. APP.	
HEAT TREAT. SPEC.			MECH. DES. APP. <i>WOC</i> A.J.J. FINAL APPROVAL	
FINISH & SPEC. NO.			ID-139	

ISSUE	ITEM	CHAN ED FROM	DATE	CN. NO.	DRAFTS	CHECKER	ENG. APP.
TOLERANCES							
SCALE:				DRILL, PUNCH, COMMERCIAL STOCK SIZES AND MANUFACTURERS TOLERANCES ARE NOT INCLUDED.			
ALL OTHERS		DEC. DIM. ±		FRAC. DIM. ±		ANGULAR DIM. ±	

REQ. PER UNIT	MODEL	PROJECT NO.	ASS'Y. NO.	DATE
USED ON				



STEP I Remove present transformer assembly, by removing the $\frac{1}{4}$ -20 nuts on the antenna feed-thru studs, and the four screws holding the assembly mounting plate to the case. When assembly has been removed, scrape area in case around mounting holes free of paint.

STEP II Install A-1176 in the case, securing with the same screws removed previously. The case of transformer TR-132 is grounded to the main case by means of a ground strap to one of the mounting screws as shown on the drawing. The lightning arrestor leads and transformer leads are then slipped on the antenna studs, as shown, and secured with lock washer and $\frac{1}{4}$ -20 nuts. Shorting bars or fuses select the 600 or 200 ohm antenna impedance.

NOTICE TO PERSONS RECEIVING THIS DRAWING

THE TECHNICAL MATERIEL CORPORATION claims proprietary right in the material disclosed herein. This drawing is issued in confidence for engineering information only and may not be reproduced or used to manufacture anything shown hereon without permission from THE TECHNICAL MATERIEL CORPORATION to the user. This drawing is loaned for mutual assistance and is subject to recall at any time.

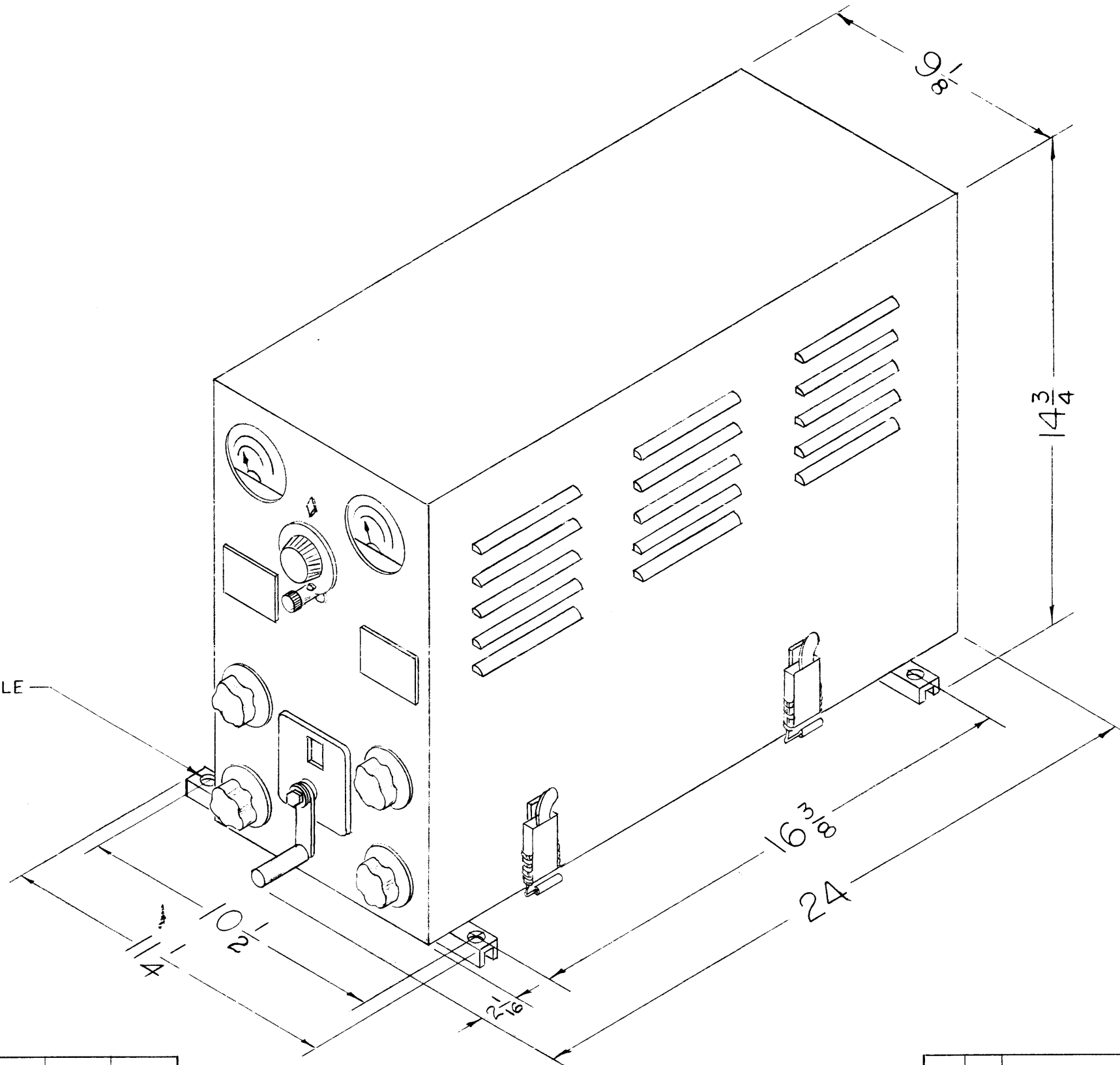
Property of:
THE TECHNICAL MATERIEL CORPORATION
MAMARONECK, NEW YORK

ISSUE	ITEM	CHANGED FROM	DATE	CH. NO.	DRAFTS	CHECKER	ENG. APP.
TOLERANCES			SCALE:				
DEC. DIM. \pm			MAXIMUM ALLOWABLE TOLERANCES HAVE BEEN DETERMINED AND ANY DEVIATIONS WILL BE CAUSE FOR REJECTION.				
FRAC. DIM. \pm			REMOVE ALL BURRS AND SHARP EDGES				
ANGULAR DIM. \pm							

1	RAC-30A			
REQ. PER UNIT	MODEL	PROJECT NO.	ASS'Y. NO.	DATE
USED ON				

REQ. ITEM	PART NO.	DESCRIPTION	SYMBOL
THE TECHNICAL MATERIEL CORP. MAMARONECK, NEW YORK			
STOCK SIZE		INSTALLATION	A-1176
MATERIAL			
		13 2-7-56	JAD
			A. J. J
TYPE & TEMPER	HEAT TREAT. SPEC.	DRAWN	CHECKED
		ARB	WJ
FINISH & SPEC. NO.	ELEC. DES. APP.	MECH. DES. APP.	ID-168

$\frac{5}{16}$ (3/12) D. MOUNTING HOLE
4 REQ.



THE TECHNICAL MATERIEL CORPORATION
MAMARONECK, NEW YORK

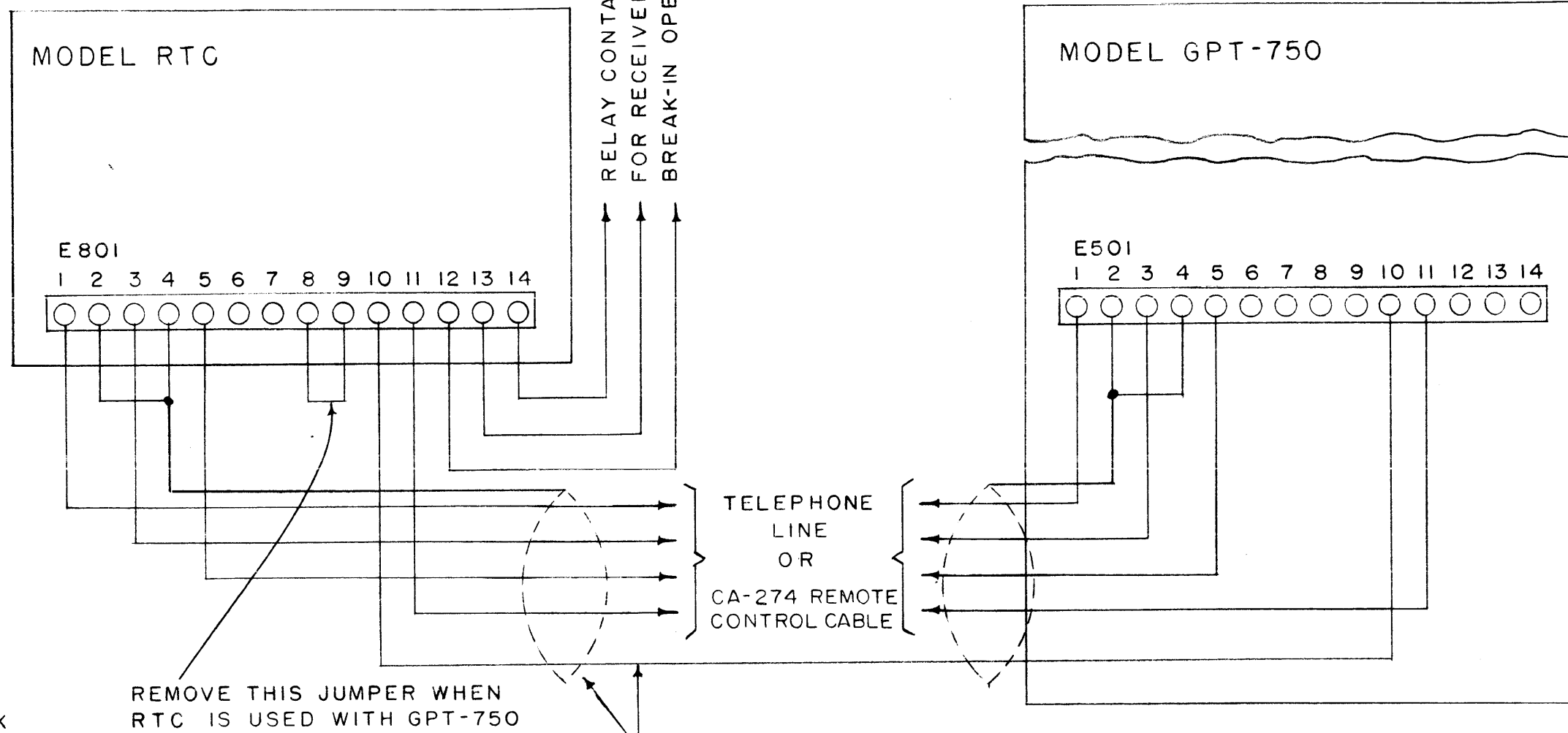
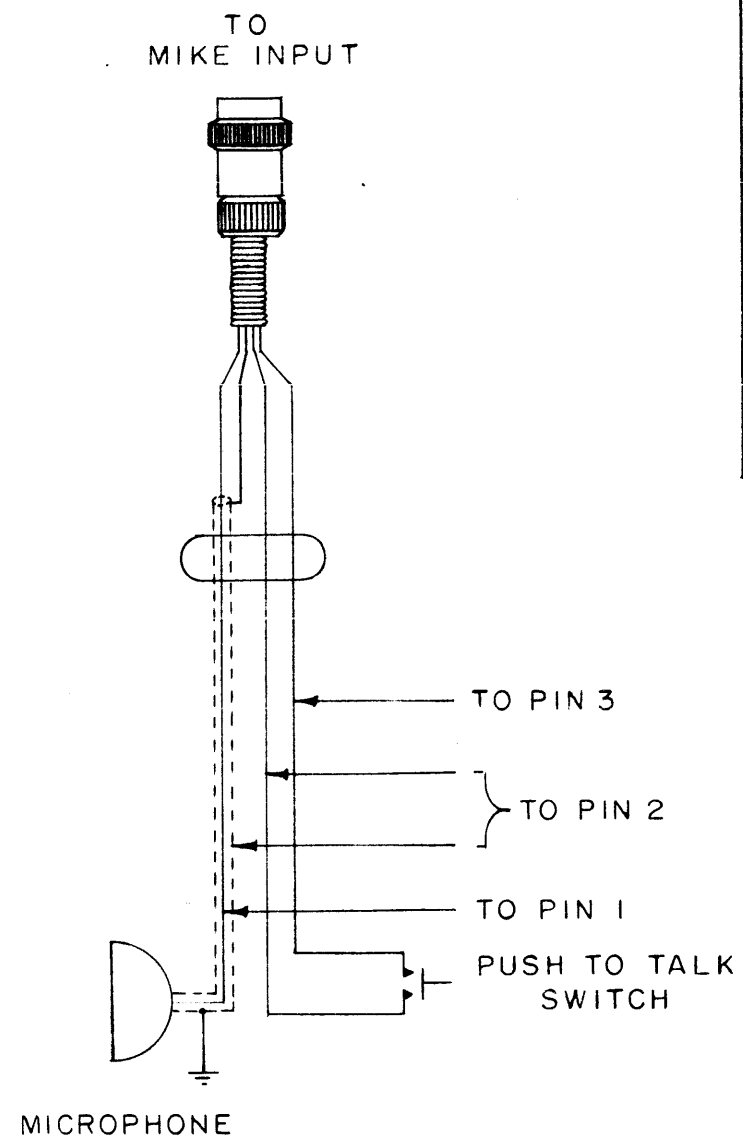
Property of

THE TECHNICAL MATERIEL CORPORATION
MAMARONECK, NEW YORK

ISSUE	ITEM	CHANGED FROM	DATE	CH. NO.	DRAFTS	CHECKER	ENG. APP.
TOLERANCES							
SCALE:							
MAXIMUM ALLOWABLE TOLERANCES HAVE BEEN DETERMINED AND ANY DEVIATIONS WILL BE CAUSE FOR REJECTION. REMOVE ALL BURRS AND SHARP EDGES							

REQ. PER UNIT	MODEL	PROJECT NO.	ASS'Y. NO.	DATE
USED ON				

REQ. ITEM	PART NO.	DESCRIPTION	SYMBOL
THE TECHNICAL MATERIEL CORP. MAMARONECK. NEW YORK			
STOCK SIZE			
OUTLINE & MOUNTING DIM.			
MATERIAL			
TAC-1			
TYPE & TEMPER	HEAT TREAT. SPEC.	DRAWN	CHECKED
		ME 2-27-56	JKQ
FINISH & SPEC. NO.		ELEC. DES. APP.	MECH. DES. APP.
		A.J.J.	
		ID-169	



NOTICE TO PERSONS RECEIVING THIS DRAWING

THE TECHNICAL MATERIEL CORPORATION claims proprietary right in the material disclosed hereon. This drawing is issued in confidence for engineering information only and may not be reproduced or used to manufacture anything shown hereon without permission from THE TECHNICAL MATERIEL CORPORATION to the user. This drawing is loaned for mutual assistance and is subject to recall at any time.

Property of:
THE TECHNICAL MATERIEL CORPORATION
MAMARONECK, NEW YORK

A	2	CABLE NO. ADDED	9/13/56	1	ees	rip	ATJ
	1	SHIELD ADDED					
ISSUE	ITEM	CHANGED FROM	DATE	CH. NO.	DRAFTS	CHECKER	ENG. APP.
TOLERANCES			SCALE:				
DEC. DIM. ±			MAXIMUM ALLOWABLE TOLERANCES HAVE BEEN DETERMINED AND ANY DEVIATIONS WILL BE CAUSE FOR REJECTION.				
FRAC. DIM. ±			REMOVE ALL BURRS AND SHARP EDGES				
ANGULAR DIM. ±							

REQ. PER UNIT	MODEL	PROJECT NO.	ASS'Y. NO.	DATE
USED ON				

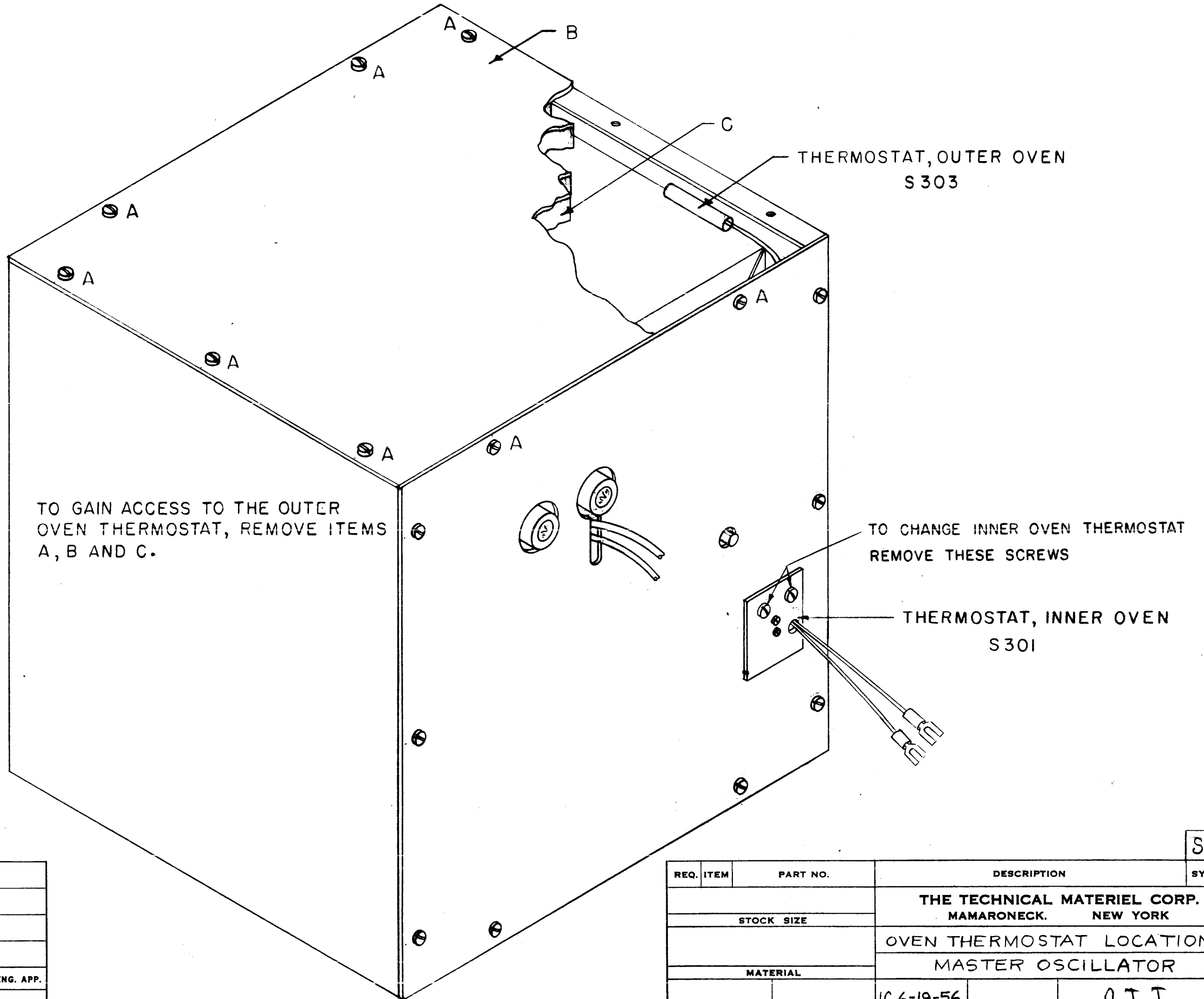
REQ. ITEM	PART NO.	DESCRIPTION	SYMBOL
STOCK SIZE		THE TECHNICAL MATERIEL CORP. MAMARONECK, NEW YORK	
MATERIAL		INTERCONNECT DIAGRAM MODEL RTC TO MODEL GPT-750	
		164-11-56	A. J. J.
TYPE & TEMPER	HEAT TREAT. SPEC.	DRAWN	CHECKED
		O.V.P.	
FINISH & SPEC. NO.		ELEC. DES. APP.	MECH. DES. APP.
			ID-172 A

ISSUED TO PERSONS RECEIVING THIS DRAWING

THE TECHNICAL MATERIEL CORPORATION claims proprietary right in the material disclosed herein. This drawing is issued in confidence for engineering information only and may not be reproduced or used to manufacture any thing shown herein without permission from THE TECHNICAL MATERIEL CORPORATION to the user. This drawing is loaned for mutual assistance and is subject to recall at any time.

Property of:

THE TECHNICAL MATERIEL CORPORATION
MAMARONECK, NEW YORK



A	1	Thermostat leads added	2-12-57	1	SC.	JAL	
ISSUE	ITEM	CHANGED FROM	DATE	CH. NO.	DRAFTS	CHECKER	ENG. APP.
TOLERANCES			SCALE:				
DEC. DIM. ±			MAXIMUM ALLOWABLE TOLERANCES HAVE BEEN DETERMINED AND ANY DEVIATIONS WILL BE CAUSE FOR REJECTION. REMOVE ALL BURRS AND SHARP EDGES				
FRAC. DIM. ±							
ANGULAR DIM. ±							

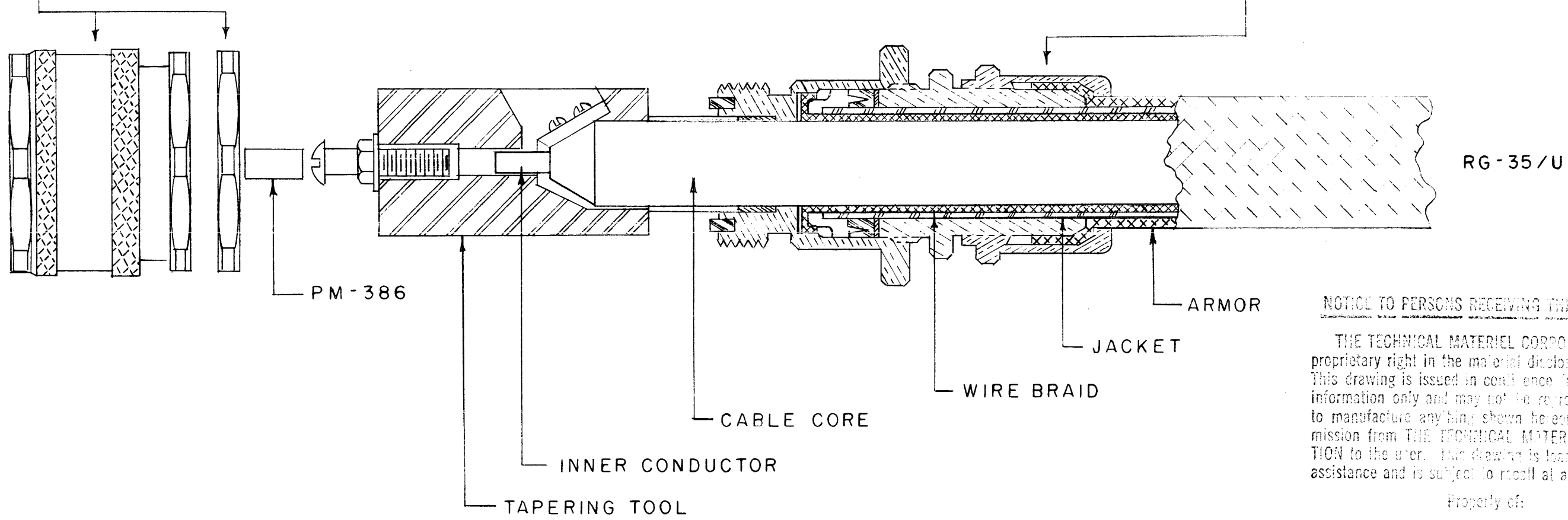
REQ. PER UNIT	MODEL	PROJECT NO.	ASS'Y. NO.	DATE
USED ON				

REQ. ITEM	PART NO.	DESCRIPTION	SYMBOL
THE TECHNICAL MATERIEL CORP. MAMARONECK, NEW YORK			
OVEN THERMOSTAT LOCATION, MASTER OSCILLATOR			
MATERIAL		6-19-56	A.J.J.
TYPE & TEMPER		DRAWN	CHECKED
HEAT TREAT. SPEC.		FINAL APPROVAL	
FINISH & SPEC. NO.		ELEC. DES. APP.	MECH. DES. APP.
ID-177			A

SA

ID-178

- 1- UNSCREW QUICK DISCONNECT PORTION (GLAND) OF PLUG FROM ASSEMBLY.
- 2- UNSCREW REAR SECTION OF ARMOR CLAMP FROM REAR OF ASSEMBLY. (SLIP IT OVER CABLE)
- 3- CUT OFF ARMOR 4-3/16" FROM END OF CABLE.
- 4- CUT OFF JACKET 2-1/2" FROM END OF CABLE. DO NOT DAMAGE WIRE BRAID.
- 5- CUT OFF WIRE BRAID 2-1/8" FROM END OF CABLE.
- 6- ASSEMBLE AS BELOW BEFORE TAPERING.
- 7- SOLDER CONNECT TUBE (PM-386) TO INNER CONDUCTOR.
- 8- REPLACE QUICK DISCONNECT PORTION.



NOTICE TO PERSONS RECEIVING THIS DRAWING

THE TECHNICAL MATERIEL CORPORATION claims proprietary right in the material disclosed hereon. This drawing is issued in confidence for engineering information only and may not be reproduced or used to manufacture anything shown hereon without permission from THE TECHNICAL MATERIEL CORPORATION to the user. This drawing is loaned for mutual assistance and is subject to recall at any time.

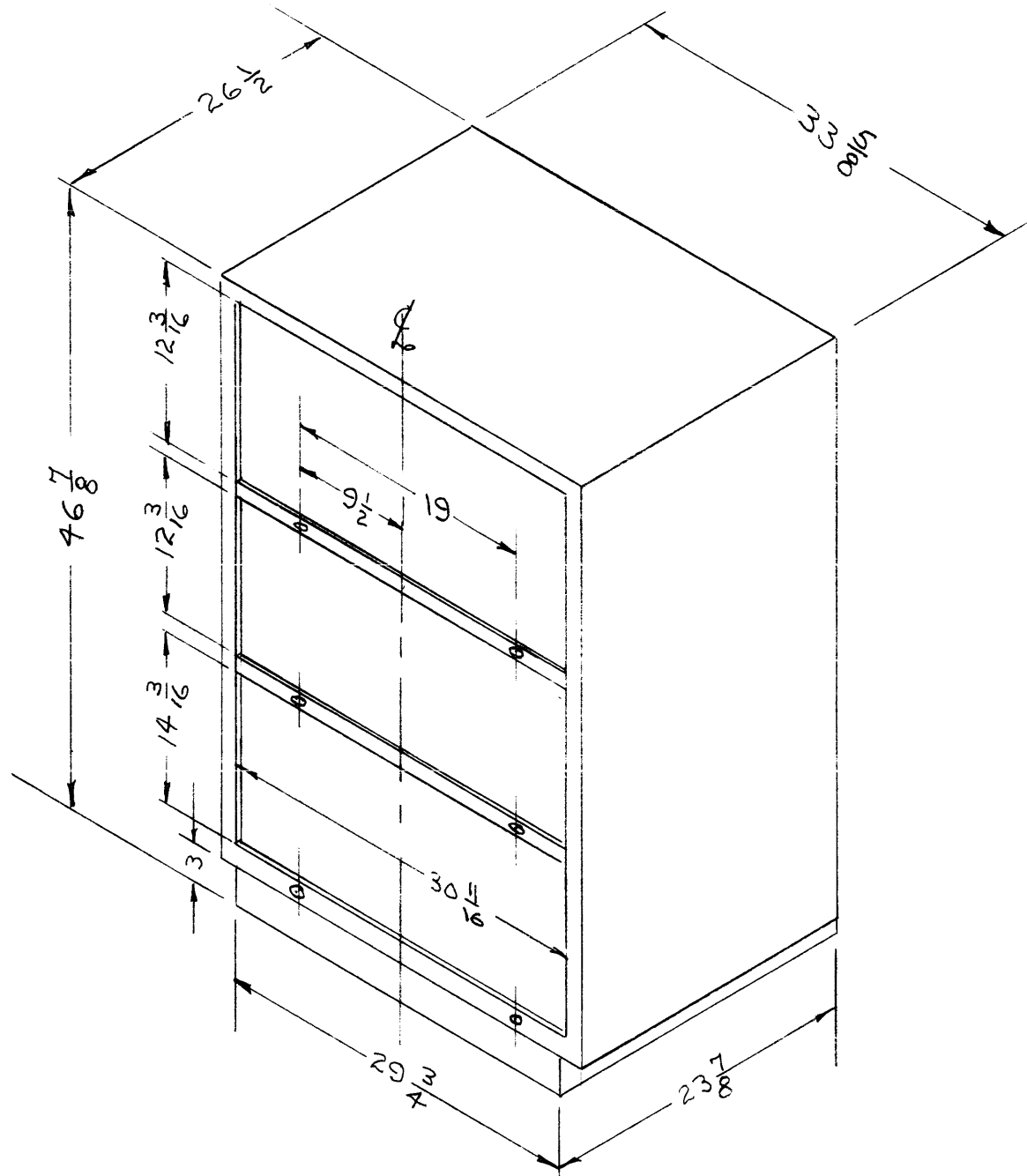
Property of:
 THE TECHNICAL MATERIEL CORPORATION
 MAMARONECK, NEW YORK

ISSUE	ITEM	CHANGED FROM	DATE	CH. NO.	DRAFTS	CHECKER	ENG. APP.
TOLERANCES			SCALE:				
DEC. DIM. ±			MAXIMUM ALLOWABLE TOLERANCES HAVE BEEN DETERMINED AND ANY DEVIATIONS WILL BE CAUSE FOR REJECTION.				
FRAC. DIM. ±			REMOVE ALL BURRS AND SHARP EDGES				
ANGULAR DIM. ±							

REQ. PER UNIT	MODEL	PROJECT NO.	ASS'Y. NO.	DATE
USED ON				

REQ. ITEM	PART NO.	DESCRIPTION	SYMBOL
THE TECHNICAL MATERIEL CORP. MAMARONECK, NEW YORK			
STOCK SIZE			
CABLE CONNECTION PL-136			
MATERIAL			
			SA
TYPE & TEMPER	HEAT TREAT. SPEC.	DRAWN	CHECKED
FINISH & SPEC. NO.		ELEC. DES. APP.	MECH. DES. APP.
ID-178			

ID-195



NOTE TO PERSONS RECEIVING THIS DRAWING

THE TECHNICAL MATERIEL CORPORATION claims proprietary right in the material disclosed hereon. This drawing is issued in confidence for engineering information only and may not be reproduced or used to manufacture anything shown hereon without permission from THE TECHNICAL MATERIEL CORPORATION to the user. This drawing is loaned for mutual assistance and is subject to recall at any time.

Property of:
THE TECHNICAL MATERIEL CORPORATION
MAMARONECK, NEW YORK

A-958

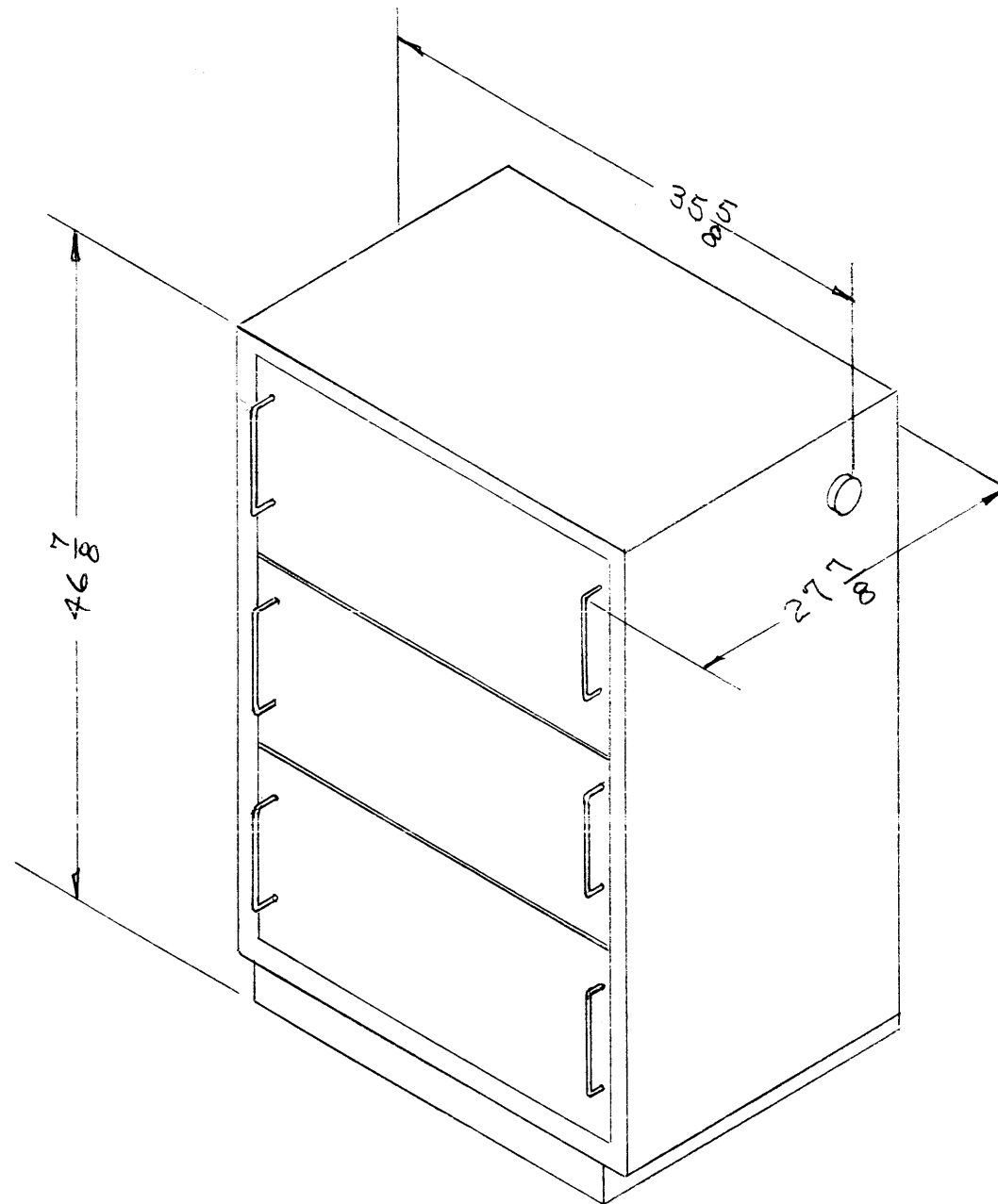
ISSUE	ITEM	CHANGED FROM	DATE	CH. NO.	DRAFTS	CHECKER	ENG. APP.
TOLERANCES			SCALE:				
DEC. DIM. ±			MAXIMUM ALLOWABLE TOLERANCES HAVE BEEN DETERMINED AND ANY DEVIATIONS WILL BE CAUSE FOR REJECTION.				
FRAC. DIM. ±			REMOVE ALL BURRS AND SHARP EDGES				
ANGULAR DIM. ±							

REQ. PER UNIT	MODEL	PROJECT NO.	ASS'Y. NO.	DATE

REQ. ITEM	PART NO.	DESCRIPTION	SYMBOL
		THE TECHNICAL MATERIEL CORP. MAMARONECK, NEW YORK	
		STOCK SIZE	
		DIMENSIONAL OUTLINE DRAWING CABINET FRAME & BASE (A-958)	
		MATERIAL	
		TYPE & TEMPER	
		HEAT TREAT. SPEC.	
		DRAWN	CHECKED
		FINISH & SPEC. NO.	
		ELEC. DES. APP.	MECH. DES. APP.

A. J. J.
ID-195

ID-196



NO. 10 PERSONS MUST BE KEPT FROM THIS DRAWING

THE TECHNICAL MATERIEL CORPORATION claims proprietary right in the material disclosed hereon. This drawing is issued in confidence for engineering information only and may not be reproduced or used to manufacture anything shown hereon without permission from THE TECHNICAL MATERIEL CORPORATION to the user. This drawing is loaned for mutual assistance and is subject to recall at any time.

Property of:
 THE TECHNICAL MATERIEL CORPORATION
 MAMARONECK, NEW YORK

65-196

ISSUE	ITEM	CHANGED FROM	DATE	CH. NO.	DRAFTS	CHECKER	ENG. APP.
TOLERANCES			SCALE:				
DEC. DIM. ±			MAXIMUM ALLOWABLE TOLERANCES HAVE BEEN DETERMINED AND ANY DEVIATIONS WILL BE CAUSE FOR REJECTION.				
FRAC. DIM. ±			REMOVE ALL BURRS AND SHARP EDGES				
ANGULAR DIM. ±							

REQ. PER UNIT	MODEL	PROJECT NO.	ASS'Y. NO.	DATE

REQ.	ITEM	PART NO.	DESCRIPTION	SYMBOL
			THE TECHNICAL MATERIEL CORP. MAMARONECK, NEW YORK	
STOCK SIZE			DIMENSIONAL OUTLINE DRAWING	
MATERIAL			MODEL GPT-750	
TYPE & TEMPER		HEAT TREAT. SPEC.	DRAWN	CHECKED
			<i>AKK</i> 3/11/57	<i>H. J. J.</i>
FINISH & SPEC. NO.			ELEC. DES. APP.	MECH. DES. APP.
				ID-196